



Trends Related to New Commitments to Prison with a Drug Primary Offense

Office of Economic and Demographic Research, December 8, 2010

New Commitments



Offenders sentenced by the court to

- **Prison**

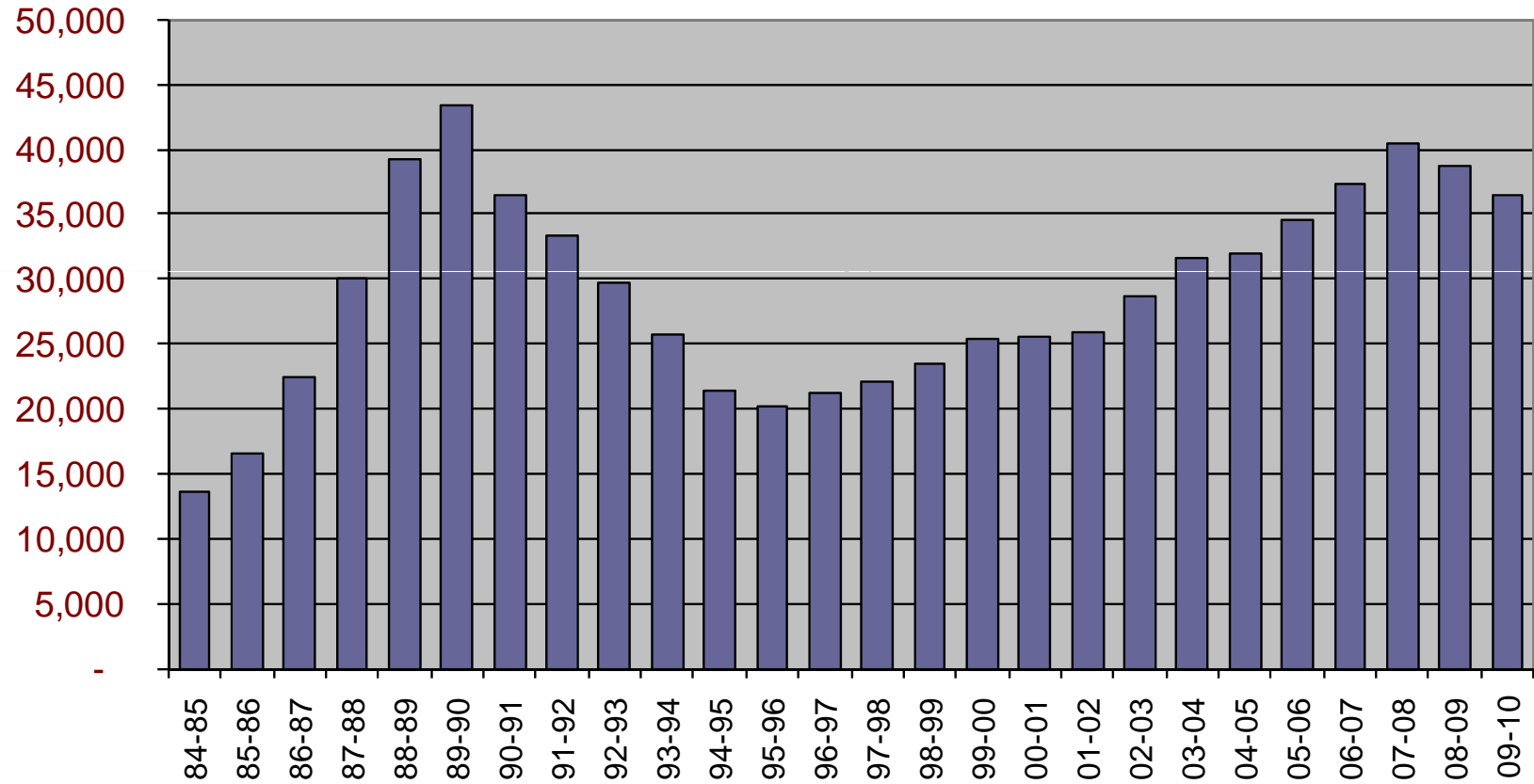
For—

- **Felony offense(s)**

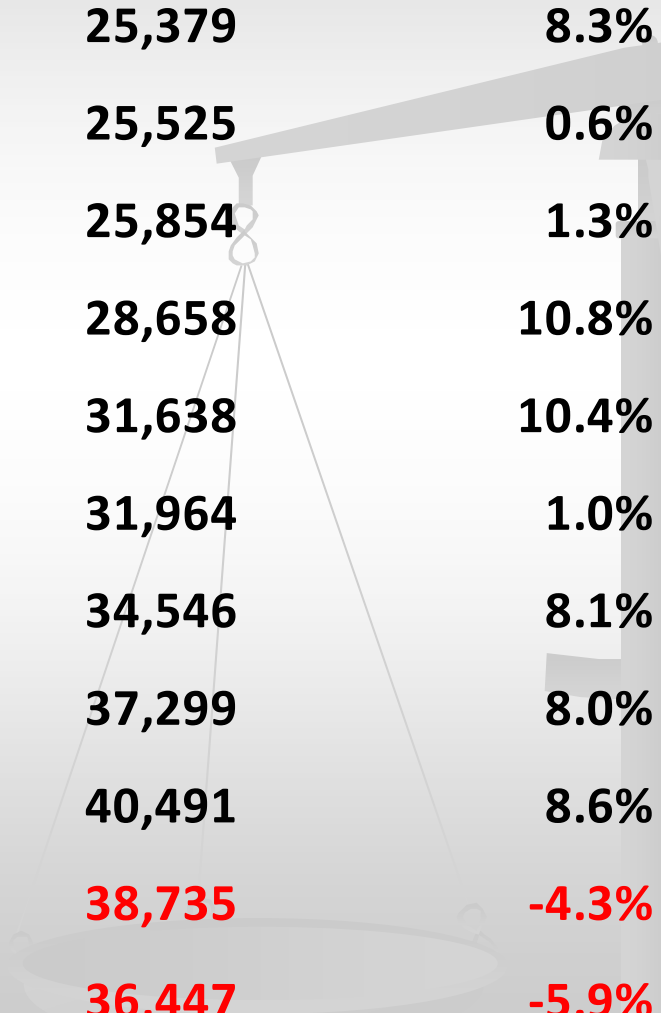
- **366 days or more**

**Prison “admissions” include some offenders
in addition to new commitments**

New Commitments

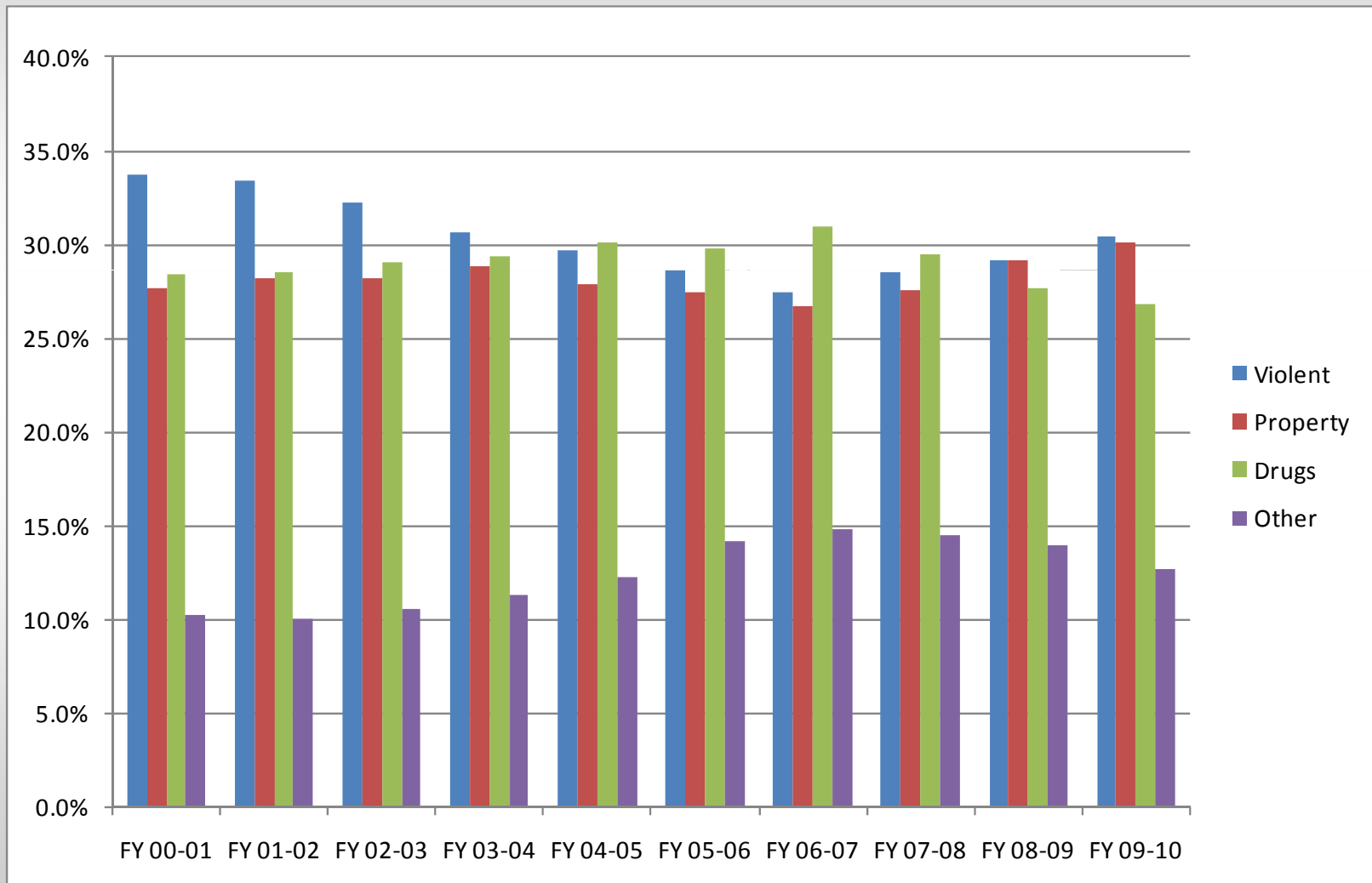


Recent new commitment trends

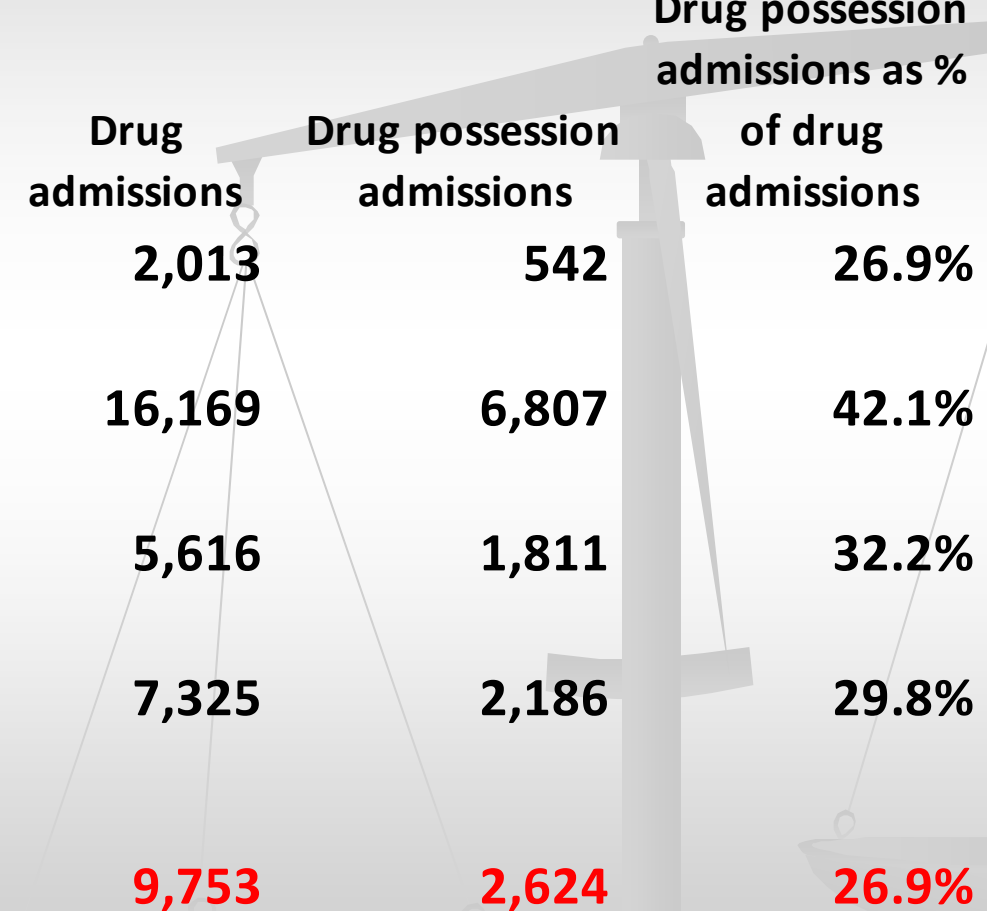


	Number	Percent
FY 99-00	25,379	8.3%
FY 00-01	25,525	0.6%
FY 01-02	25,854	1.3%
FY 02-03	28,658	10.8%
FY 03-04	31,638	10.4%
FY 04-05	31,964	1.0%
FY 05-06	34,546	8.1%
FY 06-07	37,299	8.0%
FY 07-08	40,491	8.6%
FY 08-09	38,735	-4.3%
FY 09-10	36,447	-5.9%

New Commitments to Prison by Primary Offense Type

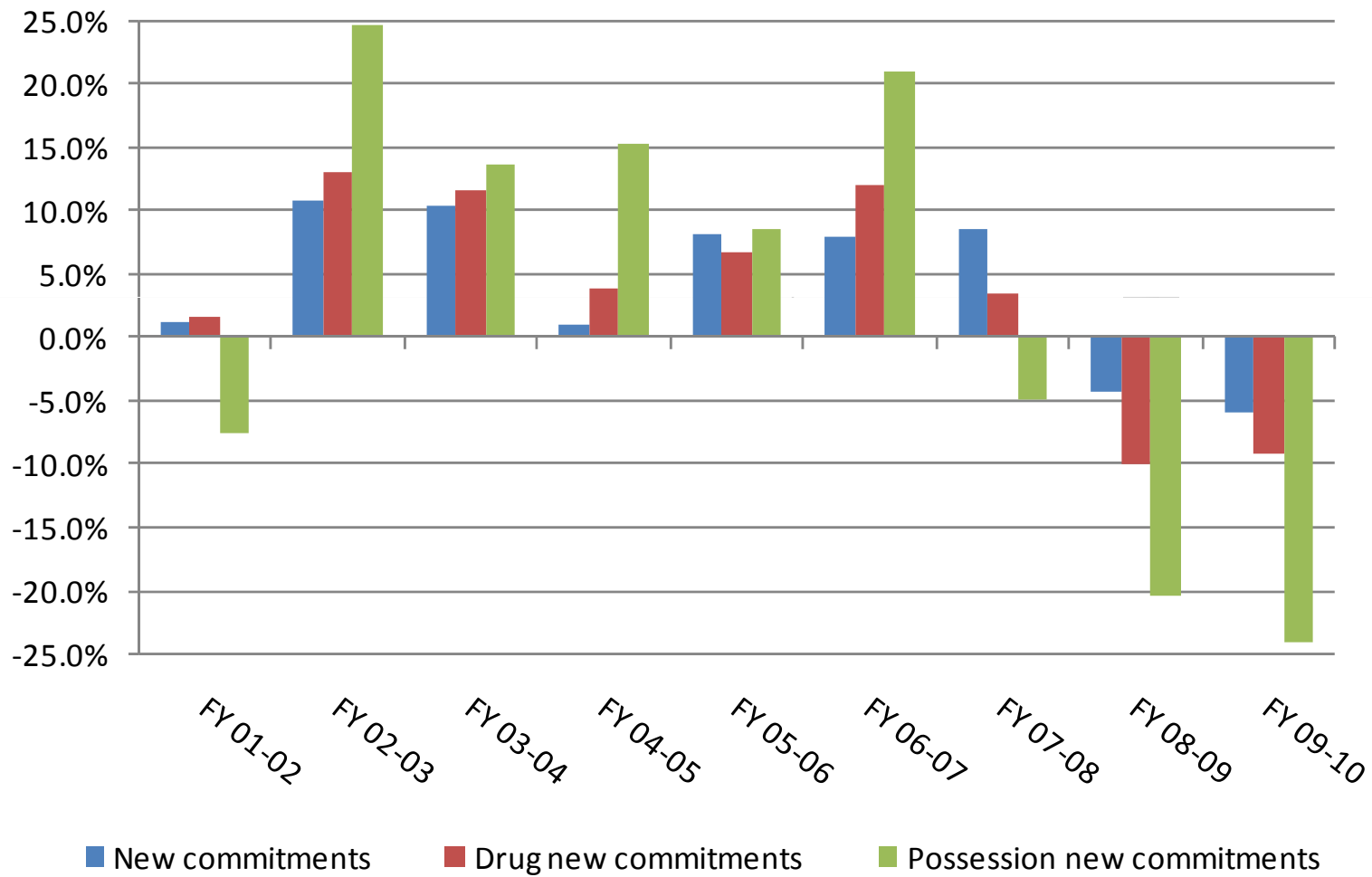


Prison Admissions

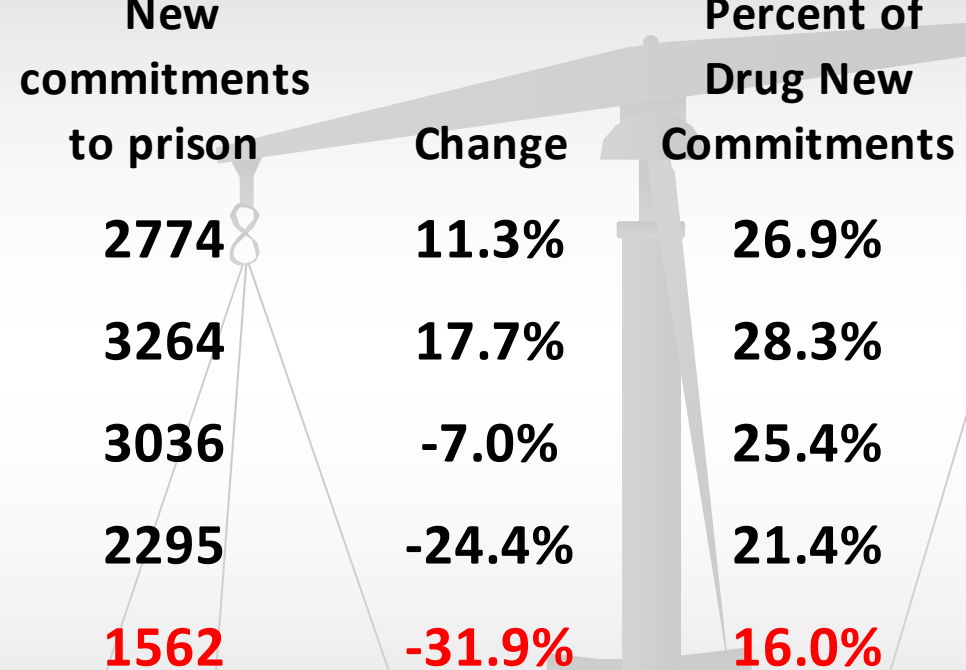


	Total admissions	Drug admissions	Drug possession admissions	Drug possession admissions as % of drug admissions
FY 84-85	14,393	2,013	542	26.9%
FY 89-90	44,701	16,169	6,807	42.1%
FY 94-95	22,247	5,616	1,811	32.2%
FY 99-00	25,743	7,325	2,186	29.8%
FY 09-10	36,444	9,753	2,624	26.9%

Change in Total and Drug New Commitments



Cocaine Possession



	Statewide Rank	New commitments to prison	Change	Percent of Drug New Commitments
FY 2005-06	2	2774	11.3%	26.9%
FY 2006-07	1	3264	17.7%	28.3%
FY 2007-08	2	3036	-7.0%	25.4%
FY 2008-09	3	2295	-24.4%	21.4%
FY 2009-10	4	1562	-31.9%	16.0%

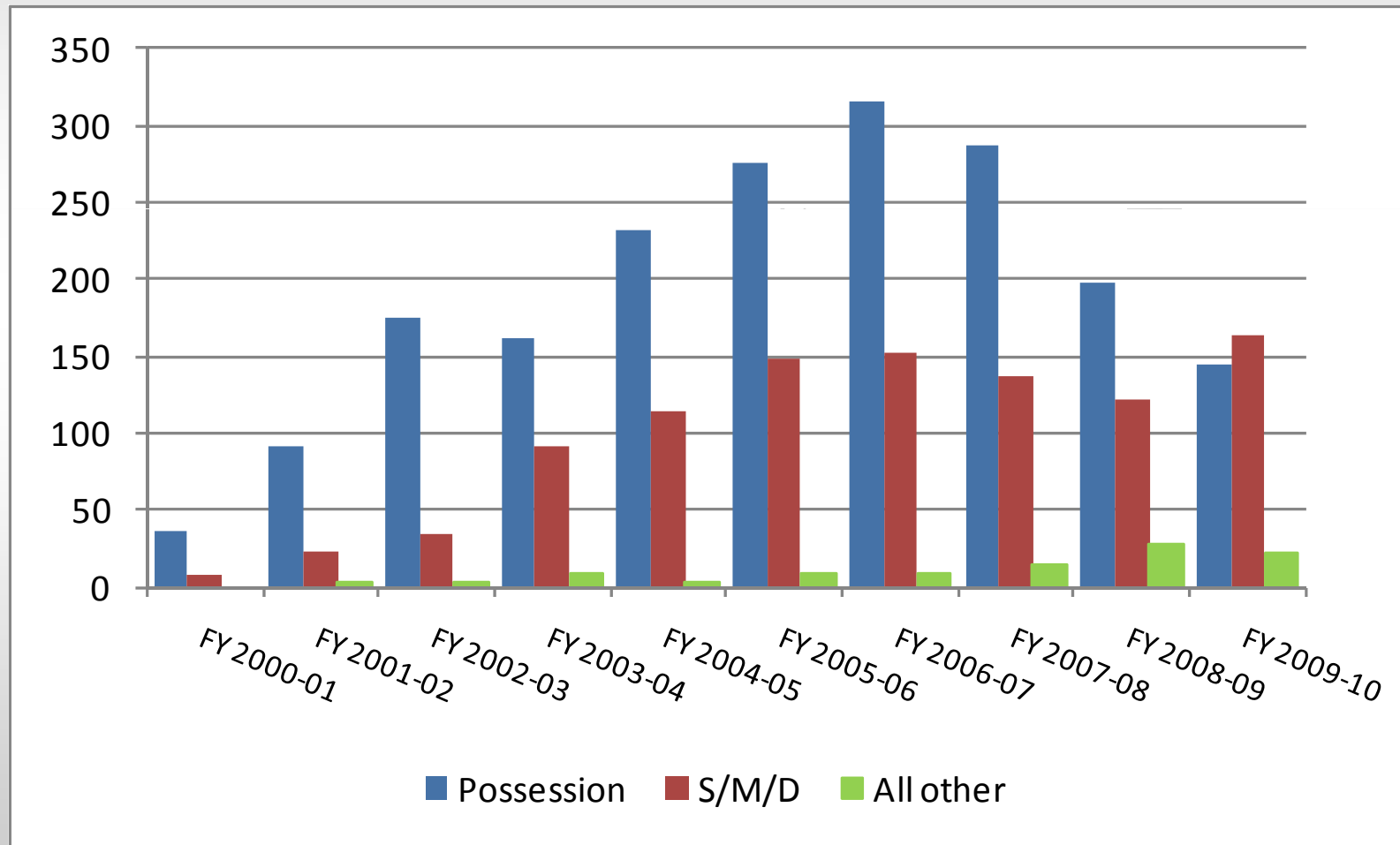
Cocaine Possession



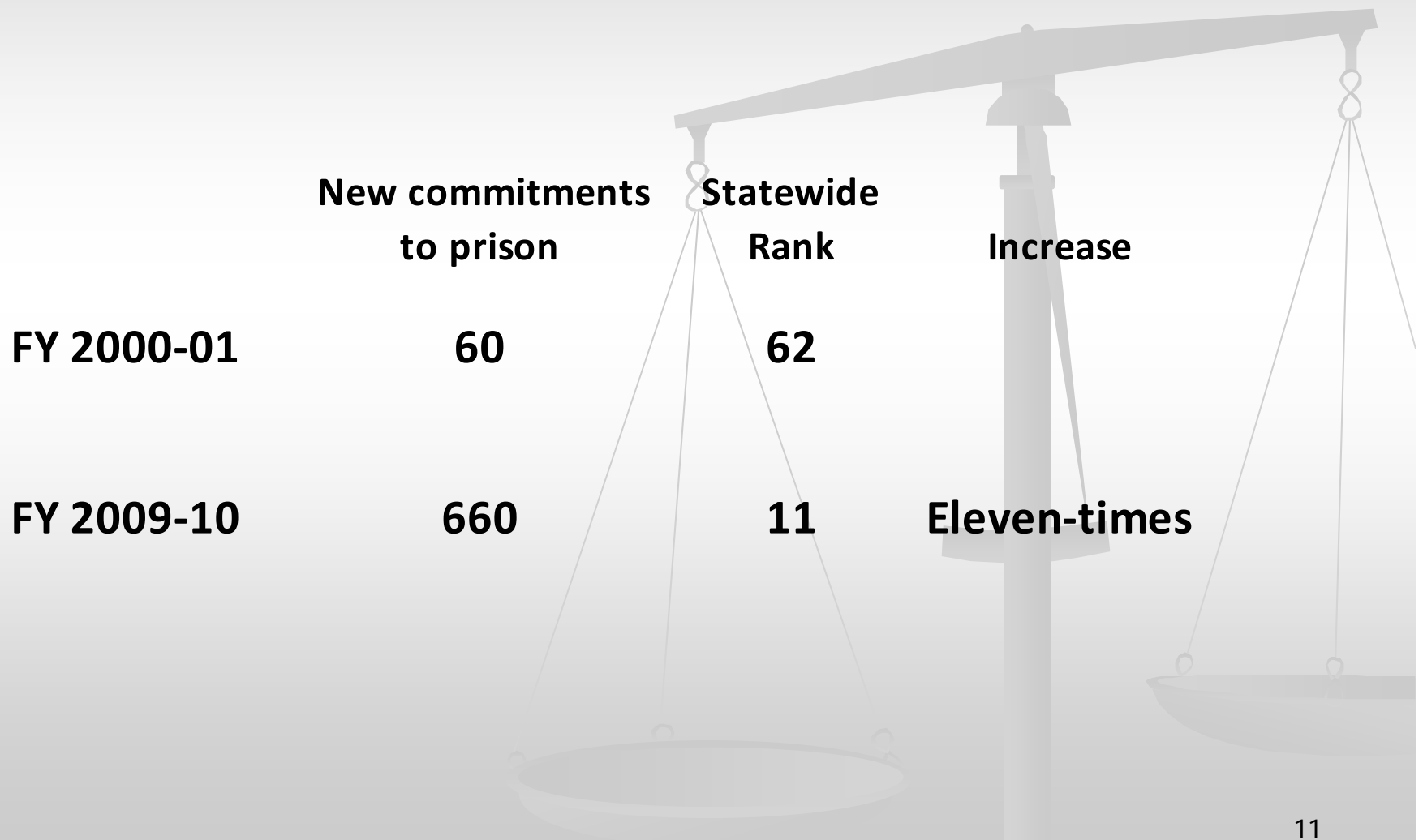
In FY 2009-10

- **12%** of all cocaine possession offenders were sentenced to prison
- **20%** of new commitments were sentenced for a year-and-a-day
- Mean sentence length: **22.6** months
- **51%** of new commitments were probation violators (technical and new offense violations)

Methamphetamine New Commitments



Trafficking in Heroin, Oxycodone, Hydrocodone, etc.— At least 4 grams but less than 14 grams



Characteristics

Cocaine Possession

- 33% white
- 17% female
- 37% on first DOC commitment

Trafficking in heroin, oxycodone, hydrocodone, etc. (at least 4 but LT 14 grams)

- 78% white
- 23% female
- 68% on first DOC commitment

For additional information

Florida Legislature, Office of Economic and Demographic
Research

edr.state.fl.us