

# CRIMINAL JUSTICE TRENDS



**Presented at the  
Criminal Justice Estimating Conference**

**Held February 21, 2025**

**Note: Data presented for FY 2019-20, FY 2020-21, FY 21-22, and FY 22-23 has been impacted by the effects of Coronavirus. Trends incorporating these fiscal years should be interpreted with caution.**

(Web Site: <http://edr.state.fl.us>)



## Table of Contents

<b>Criminal Justice Trends</b> .....	i
<b>Accuracy of the July 31, 2024 Forecast</b>	
Monitoring Admissions and Population from July 31, 2024 CJEC.....	1
Components of Admission Errors .....	2
<b>Crime</b>	
Reported Crime .....	3
Reported Crime --Violent and Non-Violent Offenses.....	4
Uniform Crime Report -- Recent Trends.....	5
Crime Rate .....	6
Total Arrests .....	7
Arrests by Offense.....	8
<b>Judicial System</b>	
Felony Filings .....	9
Felony Filings by Type.....	10
Guilty Dispositions .....	12
Guilty Dispositions by Type of Offense.....	13
Recent Trends in Filings and Guilty Dispositions.....	15
Percent of Guilty Dispositions Imprisoned .....	16
<b>Criminal Justice System Measures</b> .....	17
<b>Prison Admissions</b>	
Admissions to Prison by Calendar Year.....	23
New Commitments to Prison by Fiscal Year .....	24
New Commitments to Prison by Calendar Year .....	25
Conditional and Control Release Violators without New Sentences.....	26
Average Sentence Length of New Commitments .....	27
Recent Sentence Length Trends .....	29
Sentence Length Distribution of New Commitments.....	30
Year-and-a-Day New Commitments .....	31
Year-and-a-Day New Commitments as Percent of Total.....	32
Year-and-a-Day New Commitments by County .....	33
Short sentences: Hillsborough and Pinellas Counties.....	34
New Commitment Detail by County .....	35
Population, New Commitments, and Year-and-a-Day Sentences .....	37
New Commitments by Primary Offense .....	39

Primary Offense of Year-and-a-Day Commitments .....	43
Third Degree Felons as Percent of New Commitments.....	45
Offenders Sentenced to Prison under 10-20-Life .....	46

#### **Other Trends**

County Jail Average Daily Population .....	48
Sentenced Felons in County Jails as Percent of Total Jail Population .....	50
Offenders on Active Supervision.....	51
Offenders with Life and Death Sentences in Prison on June 30.....	52
Prison Admissions and Population by Fiscal Year .....	54
Age Distribution of Prison Admissions by Fiscal Year.....	57
Fiscal Year 23-24 Prison Admissions: Top Five Offenses by Age Group.....	58
Age Distribution of the Prison Population on June 30.....	59



# CRIMINAL JUSTICE TRENDS

## ➤ Accuracy of July 2024 forecast

- **Admissions** since the December conference totaled 15,751—579 less than projected for an error of -3.5 percent. (Page 1)
- The **end-of-month population** on June 30<sup>th</sup> was 87,978. This was -540 under the projected 88,518 (-0.6% error). (Page 1)
- Over 95.6 percent of July through January admissions were new commitments, and the percentage error was higher for this group than for all admissions. There were 15,057 new commitments, -606 less than projected (-3.9% error). The number of conditional and control release violators returned to prison with technical violations was 27 more than projected in July (4.0% error). (Page 2)

## ➤ Crime

- The number of index offenses decreased in 2021 by 38,524 (-8.3%) from the 2020 level of 466,048. The 427,524 index crimes reported in 2021 was lower than reported in any year since 1973. This is the thirteenth year in a row in which index offenses declined. (Page 3)
- The number of **reported violent offenses** decreased by -3.0 percent in 2021. Violent offenses, which include murder, forcible sexual offenses, robbery, and aggravated assault, were 18.9 percent of all index offenses in 2021, up from 17.9 percent in 2020. Non-violent index offenses include burglary, larceny, and motor vehicle theft. These decreased by -9.4 percent in 2021. Note that drug related offenses are not included in index offenses. (Page 4)
- The crime rate fell from 2,158.0 in 2020 to 1,952.3 in 2021 (-9.5%). This decline is smaller than observed in 2020 when the crime rate fell by -15.5 percent. (Page 6)
- 2021 **arrests** increased by 6.8 percent, from 508,490 in 2020 to 543,138 in 2021. Arrests for index offenses declined by -9.8 percent in 2021 while arrests for non-index crimes increased by 10.9 percent. The largest percentage decrease in index offense arrests was in robbery (down -16.6%). The largest percentage increase in index offense arrests was in murder (up 3.1%). (Pages 5, 7-8)

## ➤ Filings and Guilty Dispositions

- After three years of increases, the number of **felony filings** decreased by -6.7% in 2024. (Pages 9 and 15)
- **Violent** offense filings decreased by -4.8 percent in 2024 and **nonviolent** offense filings decreased by -7.0 percent. During the same period, **drug** filings decreased by -7.7 percent. (Pages 10 and 11)
- The share of **violent** filings increased to 24.2 percent in 2024. The share of filings that are **nonviolent** decreased from 44.6 percent in 2023 to 44.4 percent in 2024, while the share of **drug** filings decreased from 31.7 percent to 31.4 percent. (Pages 10 and 11)
- After three years of increases, the number of **guilty dispositions** decreased by -3.3% in 2024. (Pages 12 and 15)

- **Violent** offense guilty dispositions decreased by -5.4 percent and **nonviolent** offense guilty dispositions decreased by -4.5 percent in 2024 over 2023. During the same period, drug guilty dispositions decreased by -0.1 percent. (Pages 13 and 14)
- The share of guilty dispositions for **violent** offenses decreased from 21.4 to 21.0 percent between 2023 and 2024. The share for **nonviolent** offenses decreased and the share for **drug** offenses increased. (Pages 13 and 14)
- The percent of **guilty dispositions which are imprisoned** as new commitments has trended upward from less than 16 percent in the late nineties to 23.3 percent in 2009. The percentage fell for three years but then increased through 2014. Following four years of declines, the percentage increased slightly in 2019, then decreased to 14.7 percent in 2020. The percentage increased to 19.1 percent in 2021, increased to 22.5 percent in 2022, then decreased to 21.4% in 2023. It increased to 22.2% in 2024. (Page 16)

## ➤ **Prison Admissions**

- There were 27,838 **admissions to prison** in CY 2024, up 0.2 percent from CY 2023. This is the first calendar year of admissions remaining relatively flat after one year of decreasing admissions. (Page 23)
- **New commitments**, which are nearly 96.0 percent of all admissions, totaled 26,677 in FY 23-24. This represented a -0.3 percent decrease from the prior fiscal year, remaining relatively flat after new commitments increased the prior two fiscal years. (Page 24)
- In looking at new commitments by calendar year, new commitments in 2024 remained flat since the previous calendar year. (Page 25)
- **Conditional and control release violators without new sentences** comprise the remaining 4.0 percent of total admissions. These admissions increased by 2.9 percent in FY 23-24, the second straight fiscal year increase. (Page 26)
- The average **sentence length** of new commitments decreased to 69.9 months in CY 2024, down from 70.5 months in CY 2023. (Pages 27 and 28)
- In January 2025 the average **sentence length** of new commitments was 70.4 months (5.9 years). In January 2024 the average sentence length was 65.4 months (5.5 years). (Pages 28 and 29)
- While large numbers of new commitments are sentenced to prison with short sentences, there are often shifts in the **sentence length distribution**. Total new commitments remained relatively flat, decreasing by -70 (-0.3%) between FY 22-23 and FY 23-24, with the largest decreases being in sentences between 28 and 33 months and sentences between 58 and 78 months. In the first seven months of FY 24-25, new commitments decreased by -40 (-0.3%), with this decrease impacted by multiple different sentence length categories. (Page 30)
- The **number of year-and-a-day new commitments** decreased by -2.1 percent in FY 23-24. This was the first decrease after two fiscal years with increasing year-and-a-day new commitments. By calendar year, year-and-a-day new commitments increased by 4.9% in 2024. (Page 31)
- The **percentage of year-and-a-day sentences** decreased after increasing the prior two fiscal years. In FY 23-24, 7.2 percent of new commitments had year-and-a-day sentences, down from 7.4 percent in FY 22-23. However, in CY 2024, this percentage increased to 7.5%, up from 7.1% in CY 2023. (Page 32)

- The calendar year increase in **year-and-a-day new commitments** continues in the first seven months of FY 24-25, increasing by 63 (5.9%). The largest level increase was in Brevard County where these sentences increased by 360.3% percent. Sarasota (251.5%) and Miami-Dade (11.9%) also experienced large increases. Hillsborough County decreased by -18.6 percent. (Page 33)
- There was a detectable increase in **year-and-a-month** sentences in **Hillsborough County** beginning November 2007. These increases were in conjunction with a large decline in **year-and-a-day sentences**. Hillsborough's percentage of total new commitments that are either year-and-a-day or year-and-a-month in length declined after October 2006, remained stable for a couple of years and trended upward before stabilizing once again. Data for the first seven months of FY 24-25 suggest that year-and-a-day sentences represent the largest share of these short sentences and are still remaining relatively stable. Data also suggest that Pinellas County started using the year-and-a-month sentence as an alternative to year-and-a-day sentences beginning in 2010. More recent data for Pinellas County indicate a stabilization in both sentencing types interspersed with months seeing increases in both sentencing types. (Page 34)
- **Growth in new commitments** is not uniform across the state. Comparing July through January of FY 23-24 and FY 24-25, 41 counties experienced negative growth in the number of new commitments and 26 counties showed positive growth. (Pages 35 and 36)
- Duval County had the largest **number of new commitments** in the first seven months of FY 24-25 (1,176, 7.8% of total). New commitments from Pinellas accounted for 5.1 percent of the state total, up from 4.5% in the first seven months of FY 23-24. Miami-Dade's new commitments accounted for 5.1 percent of the total (down from 5.4%). (Page 35)
- In the first seven months of FY 24-25, Leon County led the state in the number of **decreases in new commitments**, decreasing by -65 (-20.2%) when compared to the same time period in FY 23-24. Bay decreased by -62 new commitments (-12.0%), while Miami-Dade decreased by -52 (-6.4%). Meanwhile, Marion increased by 155 (31.6%) and Pinellas increased by 90 (13.1%). (Page 36)
- Florida's three **largest counties**, Miami-Dade, Broward, and Hillsborough, accounted for 27.4 percent of the state population in 2024, but only 14.7 percent of the state's new commitments to prison in FY 23-24 and 27.5 percent of the year-and-a-day sentences. On the other hand, Bay County accounts for 0.9 percent of the state's total population, but accounts for 3.2 percent of new commitments. (Pages 37 and 38)
- Similarly, Hillsborough County accounts for 6.8 percent of the state's total population, but accounts for 9.4 percent of the year-and-a-day sentences, and though Volusia only represents 2.6 percent of the state population, it accounts for 14.3 percent of year-and-a-day sentences. Perhaps even more remarkable, of the 19 counties that have double-digit shares of their new commitments with year-and-a-day sentences, more than half of them have population shares of less than three-quarters of one percent. (Pages 37 and 38)
- The -0.3 percent decrease in new commitments in the first seven months of FY 24-25 was not evenly distributed across **offense groups**, with percent change ranging from -7.0% ("**Weapons**") to 3.7% ("**Drugs**"). The increases in average sentence length appear to be slowing, resulting in all new commitments increasing from an average sentence length of 70.2 months to 70.6 months. (Page 39)
- Decreases in new commitments in the "**Weapons**" category were mainly concentrated in "**Possession of a firearm by a convicted felon**," which declined by -89 (-7.2%) in the first seven months of FY 24-25. (Page 40)
- Decreases in new commitments in the "**Burglary**" category were distributed across many offenses, with the largest decrease being in "**Burglary of an occupied dwelling**," which decreased by -35 (-5.3%) in

the same time period between FY 23-24 and FY 24-25. **“Burglary, armed with explosive or weapon”** decreased by -33 (-17.5%) and **“Burglary assault any person”** decreased by -30 (-16.6%). (Page 41)

- Increases in new commitments in the **“Drugs”** category were also distributed across many offenses, with the largest increases being in **“Sell cocaine etc. within 1000 ft of school or other restricted place,”** which increased by 57 (43.2%). Other large increases include **“S/M/D Other Sch I and II”** (50, 26.5%) and **“Possess controlled substance (other)”** (50, 12.5%). **“Trafficking offenses”** also increased by 34 (2.7%) in the same time period between FY 23-24 and FY 24-25. Meanwhile, **“Methamphetamine offenses”** decreased by -52 (-5.9%). (Page 42)
- While trending in the opposite direction of new commitments as a whole, the increase in **year-and-a-day sentences** in the first seven months of FY 24-25 was not evenly distributed across **offense groups**. The largest increase was **“Drugs,”** with 60 more commitments (21.1%), followed by **“Property Theft/Fraud/Damage”** with 33 more commitments (19.0%), whereas **“Violent, Other”** saw -25 fewer commitments (-13.4%) and **“Weapons”** had -21 fewer commitments (-22.8%). (Page 43)
- New commitments with **year-and-a-day sentences** have a wide variety of offenses. In the first seven months of FY 24-25, **“Possess methamphetamine”** and **“Burglary of an unoccupied structure”** were the most common primary offenses. These two offenses accounted for 13.8 percent of the total year-and-a-day new commitments (down from 14.7% in the first seven months of FY 23-24). (Page 44)
- The **percentage of new commitments sentenced for third degree felonies** increased from 42.1 percent in CY 2023 to 43.1 percent in CY 2024. (Page 45)
- The number of offenders sentenced to prison under **10-20-Life** remained relatively flat in FY 23-24 with 1,578 offenders sentenced under these provisions receiving mandatory prison terms. Of these offenders, 14.9 percent received a sentence of at least 25 years in length, up from 13.7 percent in FY 22-23. (Pages 46 and 47)
- The total affected prison population under 10-20-Life has increased for the last three fiscal years after decreasing over the prior two years. On June 30, 2024, there were 12,803 offenders who had received a mandatory prison term under this statute in Florida’s prisons. This represented 14.7 percent of Florida’s prison population on that date. (Pages 46 and 47)

## ➤ COUNTY JAILS

- **Average daily population** in county jails declined with the end of zero tolerance policies. The adjusted June 2024 average daily population (ADP) of 56,076 was 4.0 percent higher than the adjusted June 30, 2023 ADP of 53,894. However, at the peak of zero tolerance, the ADP exceeded 66,000 (July 2007). (Page 48)
- The **adjusted average daily population** has been below 60,000 since December 2009. (Page 49)
- In FY 18-19, an average of 17.6 percent of the **offenders in county jail sentenced for a felony**. In FY 19-20, the percentage decreased to an average of 15.7 percent of the **offenders in county jail sentenced for a felony**. In FY 20-21, the percentage continued to decrease to an average of 12.4 percent of the **offenders in county jail sentenced for a felony**. In FY 21-22, the percentage increased to an average of 13.7 percent of the **offenders in county jail sentenced for a felony**. In FY 22-23, the percentage decreased to an average of 12.2 percent of the **offenders in county jail sentenced for a felony**. In FY 23-24, the percentage then increased slightly to an average of 12.4 percent of the **offenders in county jail sentenced for a felony**. In the first seven months of FY 24-25, the percentage decreased slightly to an average of 12.3 percent of the **offenders in county jail sentenced for a felony**. (Page 50)

## ➤ OTHER TRENDS

- After increasing from 112,547 in December 2005 to 121,594 in December 2008, the number of offenders on active supervision fell over the next three years to 114,492 in December 2011. The number on active supervision grew in 2012, but then declined for another eight years and was 85,541 on December 31, 2020 (down -15.0% from the prior year). The population then increased by 1.1% to 86,484 on December 31, 2021 and decreased by -0.3% to 86,260 on December 31, 2022. It then decreased by -3.6% to 83,112 on December 31, 2023 before increasing by 4.4% to 86,731 on December 31, 2024. (Page 51)
- The number of offenders with either a life or a death sentence grew for thirty-one years increasing from 4,549 in 1990 to 13,951 in 2020. This population saw its first decline in 2021, decreasing to 13,819. In 2022, it increased to 13,889, and increased to 14,174 in 2023. It then increased to 14,459 in 2024. In 1990, 10.6 percent of inmates were serving a life or death sentence on June 30. In 2024, this percentage had increased to 16.6 percent. (Page 52)
- The percent of offenders with sentences for life, death, or within the purview of 10-20-Life, has risen over the years. As of June 30, 2024, 28.4 percent of the prison population was made up of offenders with one of these sentences. (Page 53)
- The prison population on June 30, 2024 was 87,303, an increase of 2.5 percent from June 30, 2023. (Pages 54 and 56)
- The number of **prison inmates per 100,000 Florida population** rose in FY 23-24 to 379.3. This is the third year in which the incarceration rate increased after eleven years of declining numbers. In the prior 30 years, the incarceration rate had grown from 202.3 (in FY 79-80) to 543.7 (in FY 09-10). This rate had remained relatively flat between FY 94-95 and FY 01-02, but had risen each year between FY 02-03 and FY 09-10. (Pages 54 and 55)
- The **age distribution of prison admissions** has changed significantly since FY 99-00. While the percentage of 18 to 24 year olds has declined, the percentage of those older than 50 has grown steadily. However, there have been shifts for both in recent years. After a year where percentage of prison admissions remained flat for 18 to 24 year olds and declined for 50-59 year olds, both have returned to prior historical trends in FY 21-22, FY 22-23, and FY 23-24, with the percentage of 18 to 24 year olds decreasing, and the percentage of 50-59 year olds increasing. Additionally, the percentage of 35 to 49 year olds continues to surpass the percentage of 25 to 34 year olds. (Page 57)
- The **top five offenses by age group** varied considerably across admissions in FY 23-24, with several top crimes for older age groups connected to prior criminal history. (Page 58)
- The **age distribution of the prison population** has also changed significantly since June 30, 2000. While the percentage of 18 to 24 year olds has declined, the percentage of those older than 50 has grown steadily, with inmates aged 50 to 59 and inmates aged 60+ now making up a greater share of the prison population than 18 to 24 year olds. Furthermore, after staying relatively flat for a decade, the percentage of those 25 to 34 has now experienced a steady decline over several years. (Page 59)

**MONITORING PRISON ADMISSIONS TO THE DEPARTMENT OF CORRECTIONS  
SINCE THE CRIMINAL JUSTICE ESTIMATING CONFERENCE HELD 7/31/2024**

<b>MONTH</b>	<b>ADMISSIONS ESTIMATE</b>	<b>ACTUAL</b>	<b>MONTHLY OVER/ (UNDER)</b>	<b>CUMULATIVE OVER/ (UNDER)</b>
July 2024	2,380	2,486	106	106
August 2024	2,421	2,319	-102	4
September 2024	2,374	1,892	-482	-478
October 2024	2,347	2,647	300	-178
November 2024	2,294	2,052	-242	-420
December 2024	2,429	2,062	-367	-787
January 2025*	2,085	2,293	208	-579
<b>Total</b>	<b>16,330</b>	<b>15,751</b>	<b>% Error:</b>	<b>-3.5%</b>

\* Preliminary actual

**MONITORING PRISON POPULATION IN THE DEPARTMENT OF CORRECTIONS  
SINCE THE CRIMINAL JUSTICE ESTIMATING CONFERENCE HELD 7/31/2024**

<b>MONTH</b>	<b>POPULATION ESTIMATE</b>	<b>ACTUAL</b>	<b>CUMULATIVE OVER/ (UNDER)</b>
July 2024	87,688	87,684	-4
August 2024	87,968	87,742	-226
September 2024	88,191	87,562	-629
October 2024	88,315	87,974	-341
November 2024	88,484	87,973	-511
December 2024	88,649	87,908	-741
January 2025	88,518	87,978	-540
	<b>-0.6%</b>	<b>Error</b>	

## COMPONENTS OF ADMISSION ERRORS SINCE JULY 31, 2024 CJEC

### ALL ADMISSIONS

	July 2024 CJEC	Actual	Diff	Cumulative difference
July 2024	2,380	2,486	106	106
August 2024	2,421	2,319	(102)	4
September 2024	2,374	1,892	(482)	(478)
October 2024	2,347	2,647	300	(178)
November 2024	2,294	2,052	(242)	(420)
December 2024	2,429	2,062	(367)	(787)
January 2025	2,085	2,293	208	(579)
<b>Total</b>	16,330	15,751	(579)	

-3.5% error

### NEW COMMITMENTS

	July 2024 CJEC	Actual	Diff	Cumulative difference
July 2024	2,278	2,368	90	90
August 2024	2,320	2,211	(109)	(19)
September 2024	2,281	1,824	(457)	(476)
October 2024	2,241	2,520	279	(197)
November 2024	2,200	1,957	(243)	(440)
December 2024	2,352	1,973	(379)	(819)
January 2025	1,991	2,204	213	(606)
<b>Total</b>	15,663	15,057	(606)	

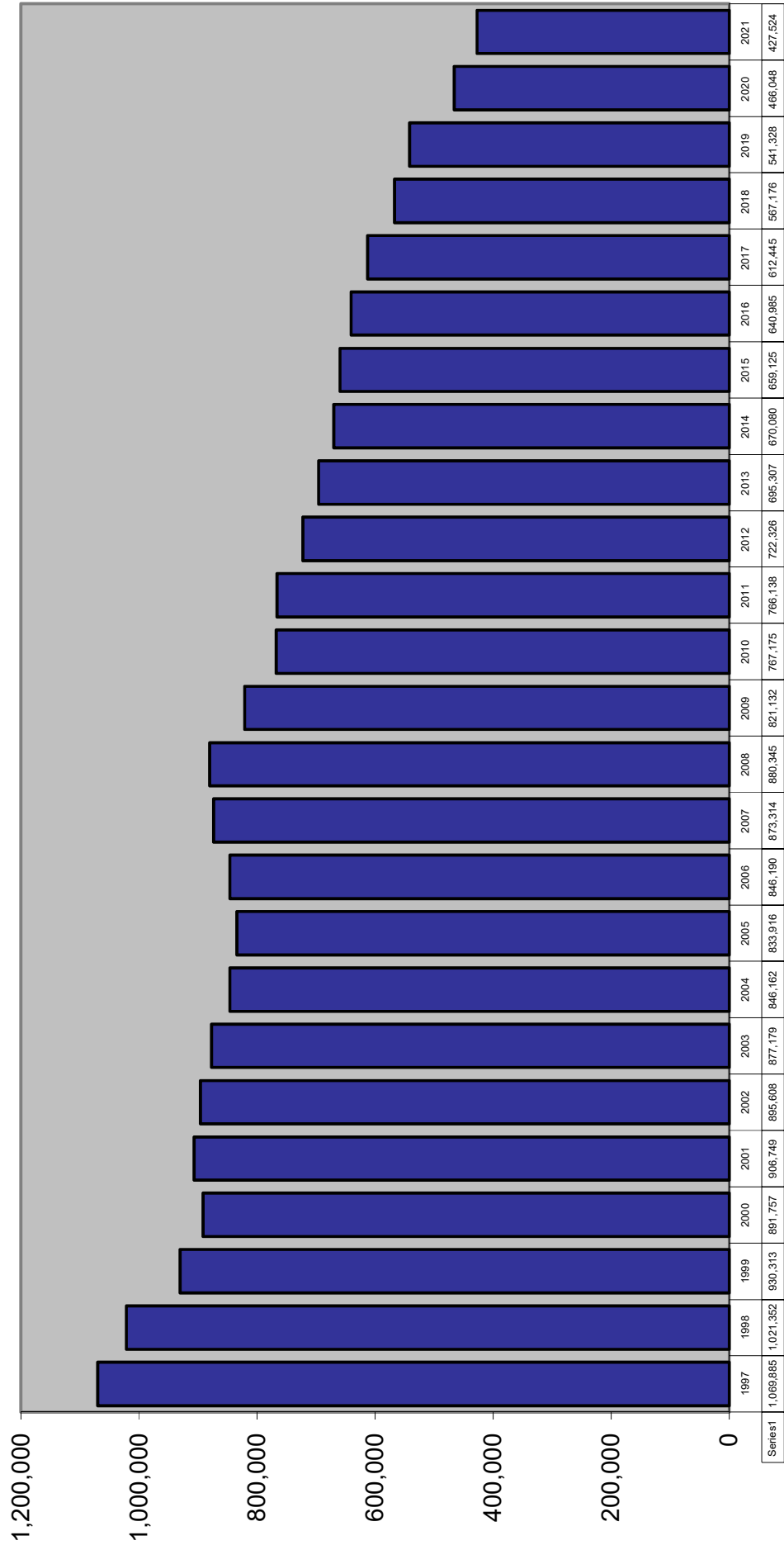
-3.9% error

### CONDITIONAL AND CONTROL RELEASE OFFENDERS RETURNED WITH TECHNICAL VIOLATIONS

	July 2024 CJEC	Actual	Diff	Cumulative difference
July 2024	102	118	16	16
August 2024	101	108	7	23
September 2024	93	68	(25)	(2)
October 2024	106	127	21	19
November 2024	94	95	1	20
December 2024	77	89	12	32
January 2025	94	89	(5)	27
<b>Total</b>	667	694	27	

4.0% error

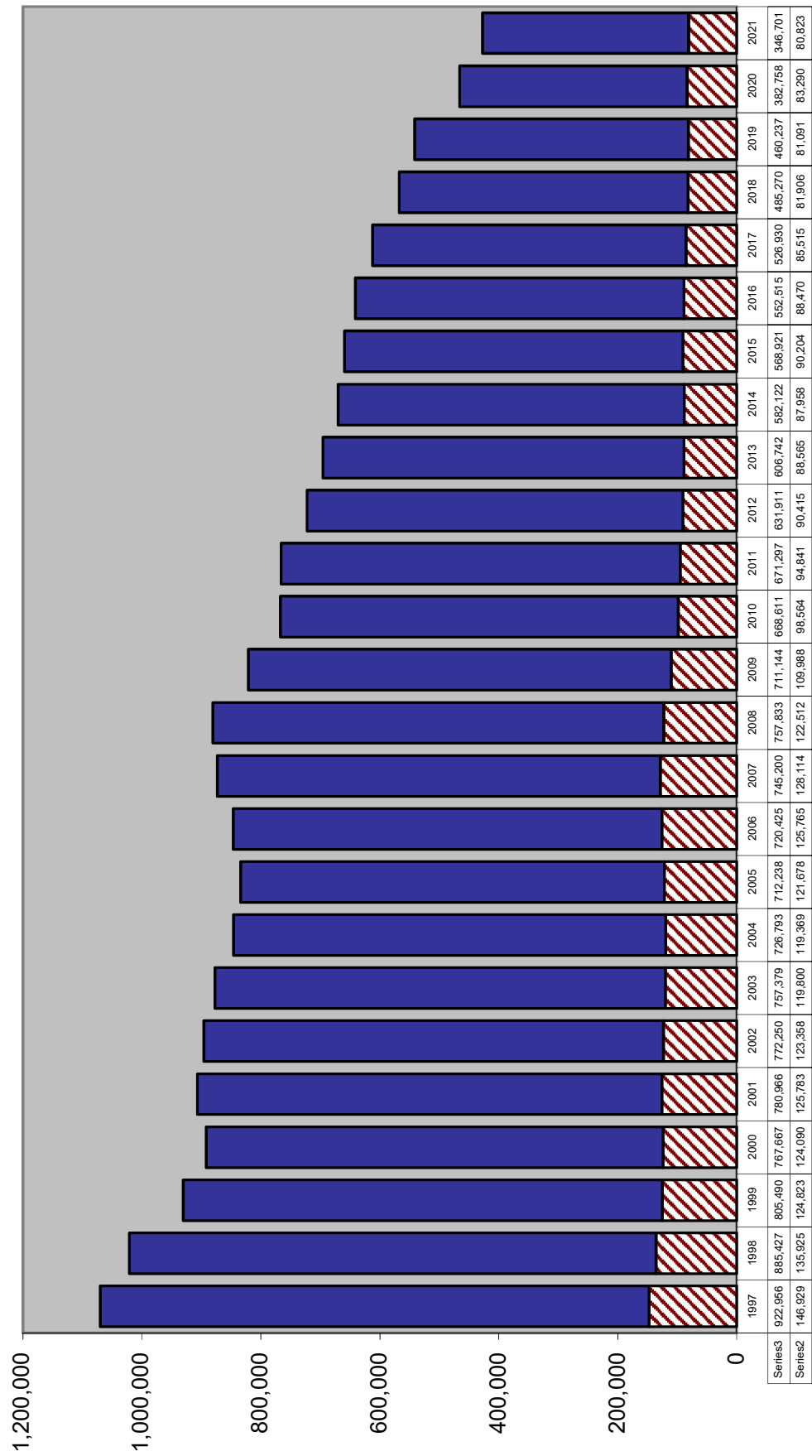
## REPORTED CRIME (All Index Offenses)





# REPORTED CRIME

## Violent and Nonviolent Index Offenses



## Uniform Crime Report

### TOTAL INDEX CRIMES

		Change from prior year
2012	722,326	-5.7%
2013	695,307	-3.7%
2014	670,080	-3.6%
2015	659,125	-1.6%
2016	640,985	-2.8%
2017	612,445	-4.5%
2018	567,176	-7.4%
2019	541,328	-4.6%
2020	466,048	-13.9%
2021	427,524	-8.3%

## Uniform Crime Report

### VIOLENT INDEX CRIMES

		Change from prior year
2012	90,415	-4.7%
2013	88,565	-2.0%
2014	87,958	-0.7%
2015	90,204	2.6%
2016	88,470	-1.9%
2017	85,515	-3.3%
2018	81,906	-4.2%
2019	81,091	-1.0%
2020	83,290	2.7%
2021	80,823	-3.0%

### NON-VIOLENT INDEX CRIMES

		Change from prior year
2012	631,911	-5.9%
2013	606,742	-4.0%
2014	582,122	-4.1%
2015	568,921	-2.3%
2016	552,515	-2.9%
2017	526,930	-4.6%
2018	485,270	-7.9%
2019	460,237	-5.2%
2020	382,758	-16.8%
2021	346,701	-9.4%

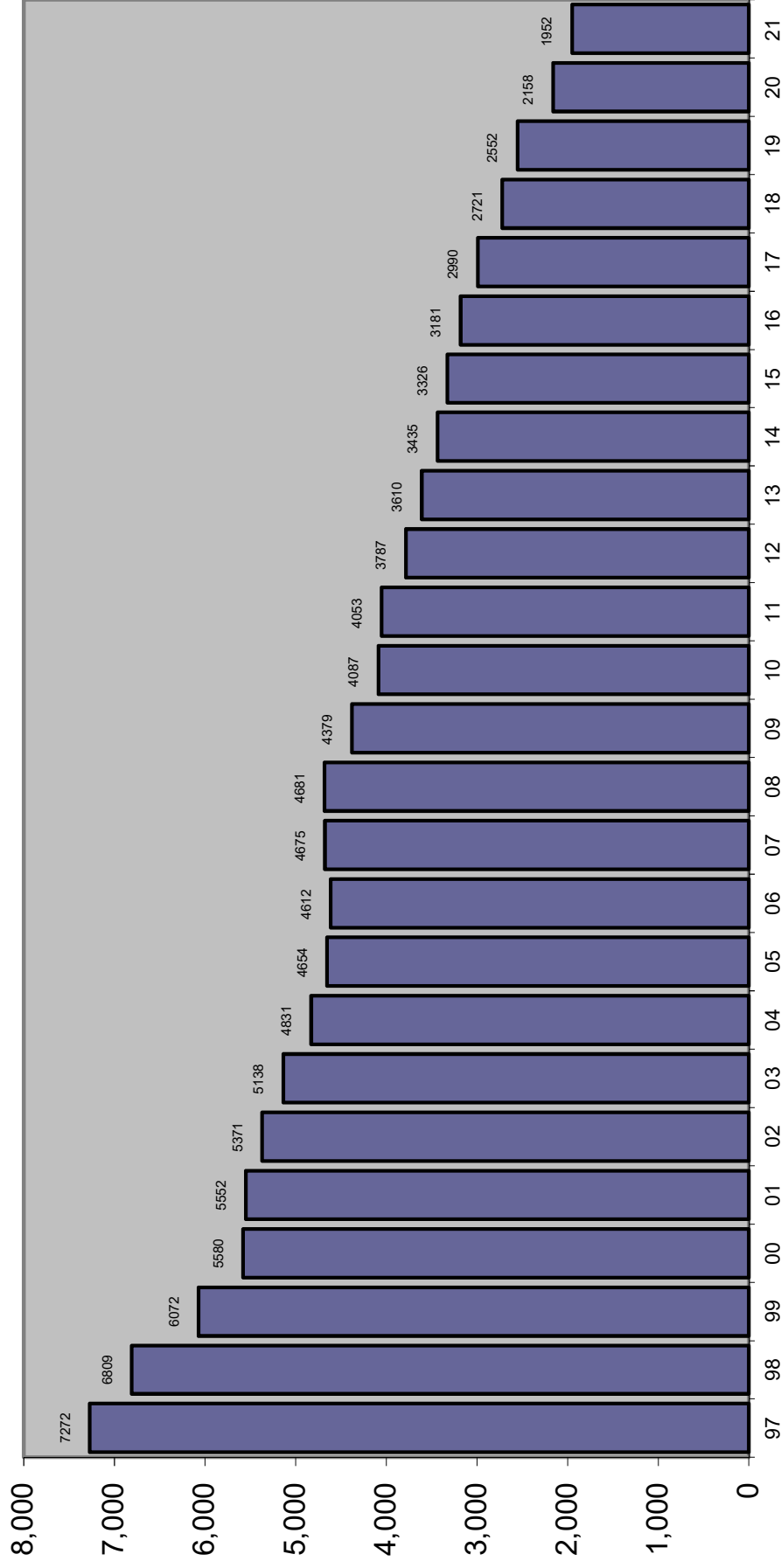
## ARRESTS

		Change from prior year
2012	960,446	0.8%
2013	912,552	-5.0%
2014	867,084	-5.0%
2015	773,174	-10.8%
2016	726,491	-6.0%
2017	711,831	-2.0%
2018	718,754	1.0%
2019	679,221	-5.5%
2020	508,490	-25.1%
2021	543,138	6.8%

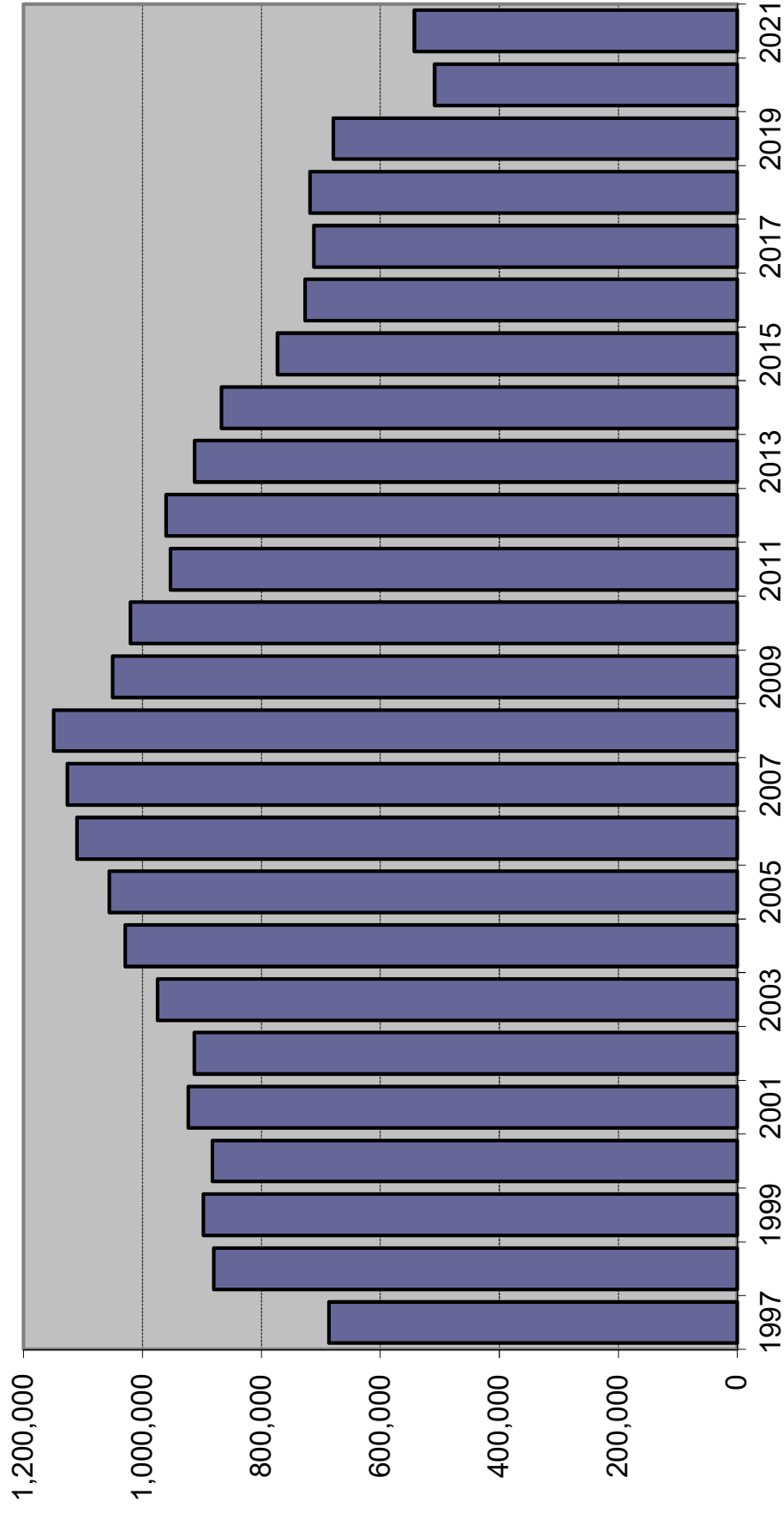
Source: Florida Department of Law Enforcement, "Crime in Florida", various years.

# CRIME RATE

## Index Crimes per 100,000 Population



# TOTAL ARRESTS



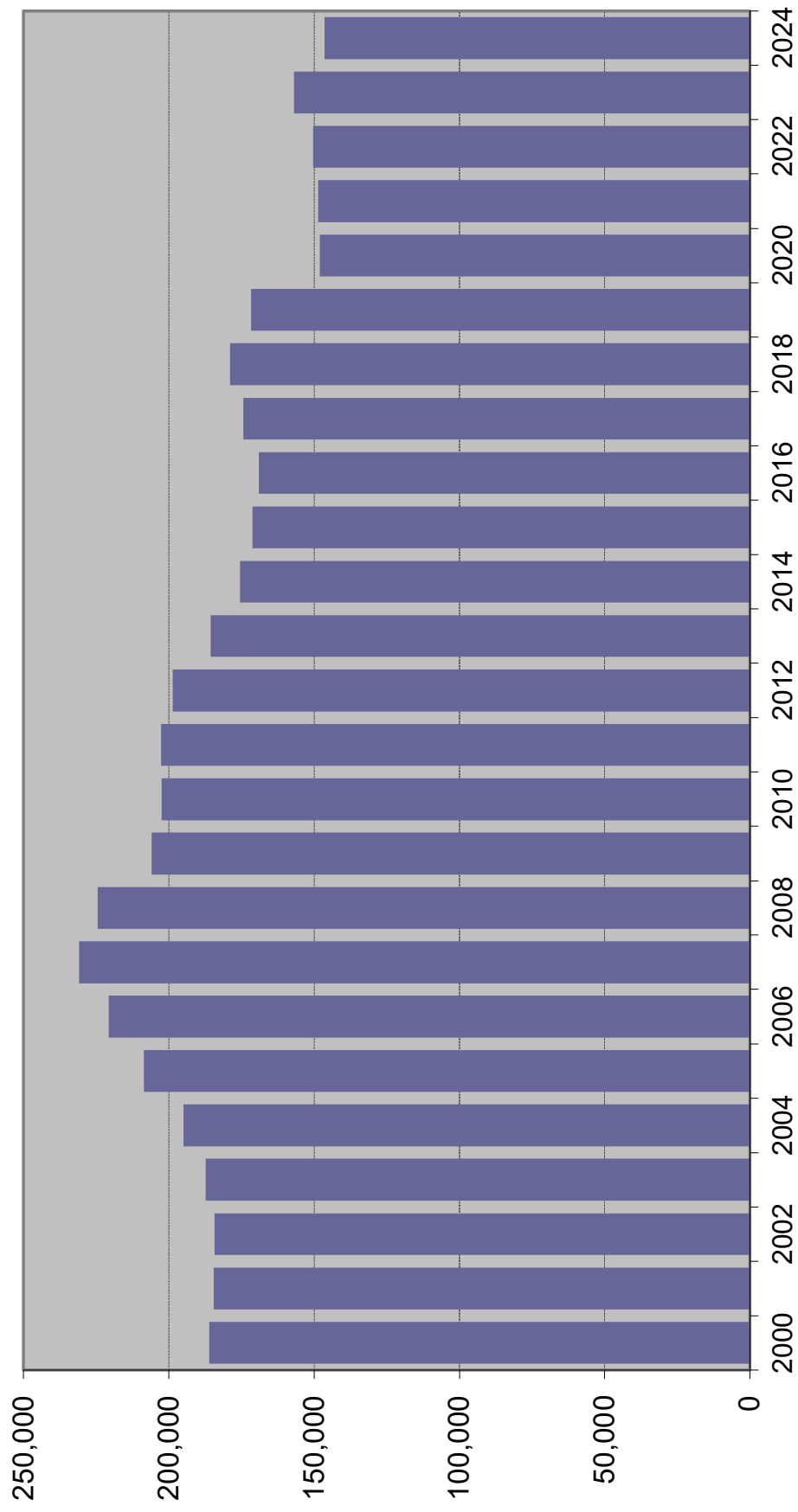
Source of data changed in 1996 to fingerprint cards and in 1998 to aggregate reports from Law Enforcement Agencies.

# ARRESTS

Index Offenses	2019	% Change	2020	% Change	2021	% Change
Murder	787	10.8%	844	7.2%	870	3.1%
Forcible Sex Offenses	1,765	-9.0%	1,817	2.9%	1,777	-2.2%
Robbery	6,006	3.7%	5,485	-8.7%	4,572	-16.6%
Aggravated Assault	24,607	-4.6%	25,508	3.7%	25,848	1.3%
Burglary	13,560	-8.6%	12,584	-7.2%	11,125	-11.6%
Larceny	64,088	-3.8%	46,565	-27.3%	39,021	-16.2%
Motor Vehicle Theft	7,779	-6.7%	7,177	-7.7%	6,986	-2.7%
<b>Total Index Offenses</b>	<b>118,592</b>	<b>-4.4%</b>	<b>99,980</b>	<b>-15.7%</b>	<b>90,199</b>	<b>-9.8%</b>
<b>Part II</b>						
Manslaughter	121	28.7%	142	17.4%	113	-20.4%
Kidnap/Abduction	696	-10.7%	642	-7.8%	691	7.6%
Arson	252	1.2%	257	2.0%	303	17.9%
Simple Assault	77,981	-0.5%	73,358	-5.9%	76,711	4.6%
Drug Arrests	110,152	-18.2%	68,661	-37.7%	78,437	14.2%
Bribery	45	55.2%	49	8.9%	39	-20.4%
Embezzlement	1,047	-3.6%	650	-37.9%	662	1.8%
Fraud	11,227	-0.6%	8,256	-26.5%	8,222	-0.4%
Counterfeit/Forgery	1,808	-10.6%	1,211	-33.0%	1,091	-9.9%
Extortion/Blackmail	91	7.1%	71	-22.0%	79	11.3%
Intimidation	2,809	10.9%	2,185	-22.2%	2,577	17.9%
Prostitution/commercialized sex	2,049	6.2%	940	-54.1%	1,077	14.6%
Non-Forcible Sex Offenses	3,209	11.8%	2,924	-8.9%	3,273	11.9%
Stolen Property	1,512	-9.5%	1,318	-12.8%	1,354	2.7%
Driving Under Influence	33,873	5.2%	29,115	-14.0%	33,750	15.9%
Destruction/Vandalism	5,956	-3.4%	5,818	-2.3%	6,015	3.4%
Gambling	107	-13.0%	110	2.8%	49	-55.5%
Weapons Violations	6,552	-1.3%	7,533	15.0%	9,893	31.3%
Liquor Law Violations	10,774	1.7%	5,996	-44.3%	8,056	34.4%
Miscellaneous	290,368	-3.6%	199,274	-31.4%	220,547	10.7%
<b>Total Part II</b>	<b>560,629</b>	<b>-5.7%</b>	<b>408,510</b>	<b>-27.1%</b>	<b>452,939</b>	<b>10.9%</b>
<b>ALL OFFENSES</b>	<b>679,221</b>	<b>-5.5%</b>	<b>508,490</b>	<b>-25.1%</b>	<b>543,138</b>	<b>6.8%</b>

Source: Florida Department of Law Enforcement, Uniform Crime Reports, various years

# FELONY FILINGS



## FELONY FILINGS BY OFFENSE TYPE

Year	Violent <sup>1</sup>		Nonviolent <sup>2</sup>		Drug <sup>3</sup>		Total
2000	44,589	24.0%	84,970	45.7%	56,527	30.4%	186,086
2001	42,611	23.1%	85,689	46.4%	56,271	30.5%	184,571
2002	41,353	22.4%	87,134	47.3%	55,808	30.3%	184,295
2003	39,041	20.8%	90,094	48.1%	58,244	31.1%	187,379
2004	38,409	19.7%	92,730	47.6%	63,724	32.7%	194,863
2005	38,337	18.4%	100,457	48.2%	69,746	33.4%	208,540
2006	39,499	17.9%	107,295	48.6%	73,963	33.5%	220,757
2007	41,514	18.0%	115,620	50.1%	73,688	31.9%	230,822
2008	40,978	18.3%	113,932	50.8%	69,568	31.0%	224,478
2009	40,347	19.6%	102,577	49.8%	62,910	30.6%	205,834
2010	39,160	19.3%	102,443	50.6%	60,866	30.1%	202,469
2011	38,875	19.2%	107,430	53.0%	56,340	27.8%	202,645
2012	39,122	19.7%	107,677	54.2%	51,795	26.1%	198,594
2013	35,311	19.0%	100,483	54.1%	49,860	26.9%	185,654
2014	34,361	19.6%	94,060	53.6%	47,057	26.8%	175,478
2015	34,553	20.2%	90,437	52.8%	46,166	27.0%	171,156
2016	33,674	19.9%	88,039	52.1%	47,336	28.0%	169,049
2017	34,562	19.8%	87,275	50.1%	52,517	30.1%	174,354
2018	35,263	19.7%	84,525	47.2%	59,137	33.1%	178,925
2019	35,705	20.8%	80,663	47.0%	55,299	32.2%	171,667
2020	35,879	24.2%	67,452	45.6%	44,675	30.2%	148,006
2021	35,747	24.1%	64,394	43.3%	48,449	32.6%	148,590
2022	36,051	24.0%	67,434	44.8%	46,870	31.2%	150,355
2023	37,223	23.7%	69,935	44.6%	49,794	31.7%	156,952
2024	35,443	24.2%	65,053	44.4%	45,970	31.4%	146,466

Note: Filings for minimum-mandatory offenses prior to 1992 are excluded. The minimum-mandatory classification for filings was discontinued 7/1/91.

<sup>1</sup> Summary Reporting System categories of capital murder, non-capital murder, sexual offenses, robbery, and other crimes against persons.

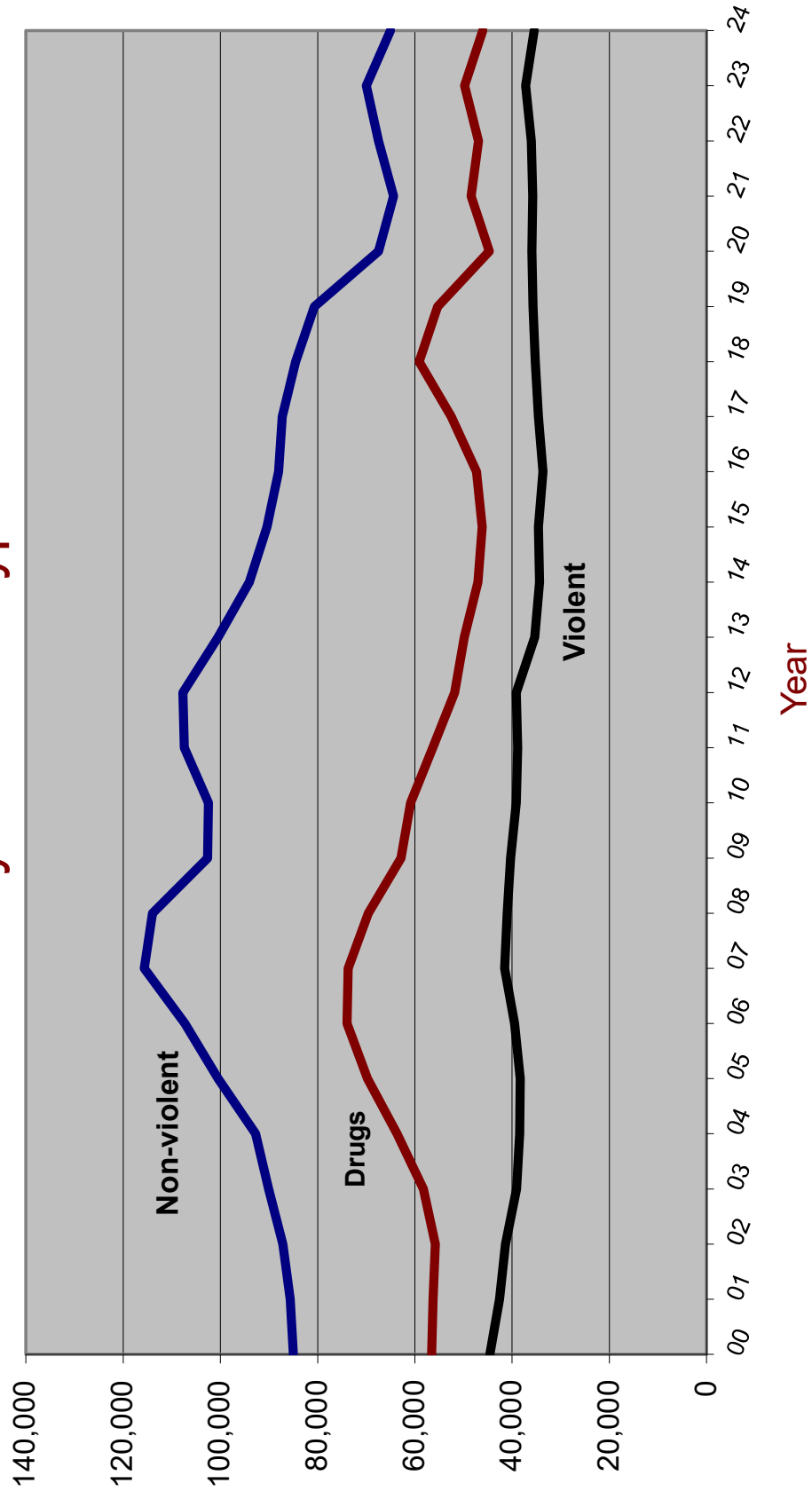
<sup>2</sup> Summary Reporting System categories of burglary, theft, forgery and fraud, worthless checks, other crimes against property and all other felonies.

<sup>3</sup> Summary Reporting System drug category.

Data Source: Office of State Courts Administrator, Summary Reporting System, Update run date: 2/25.

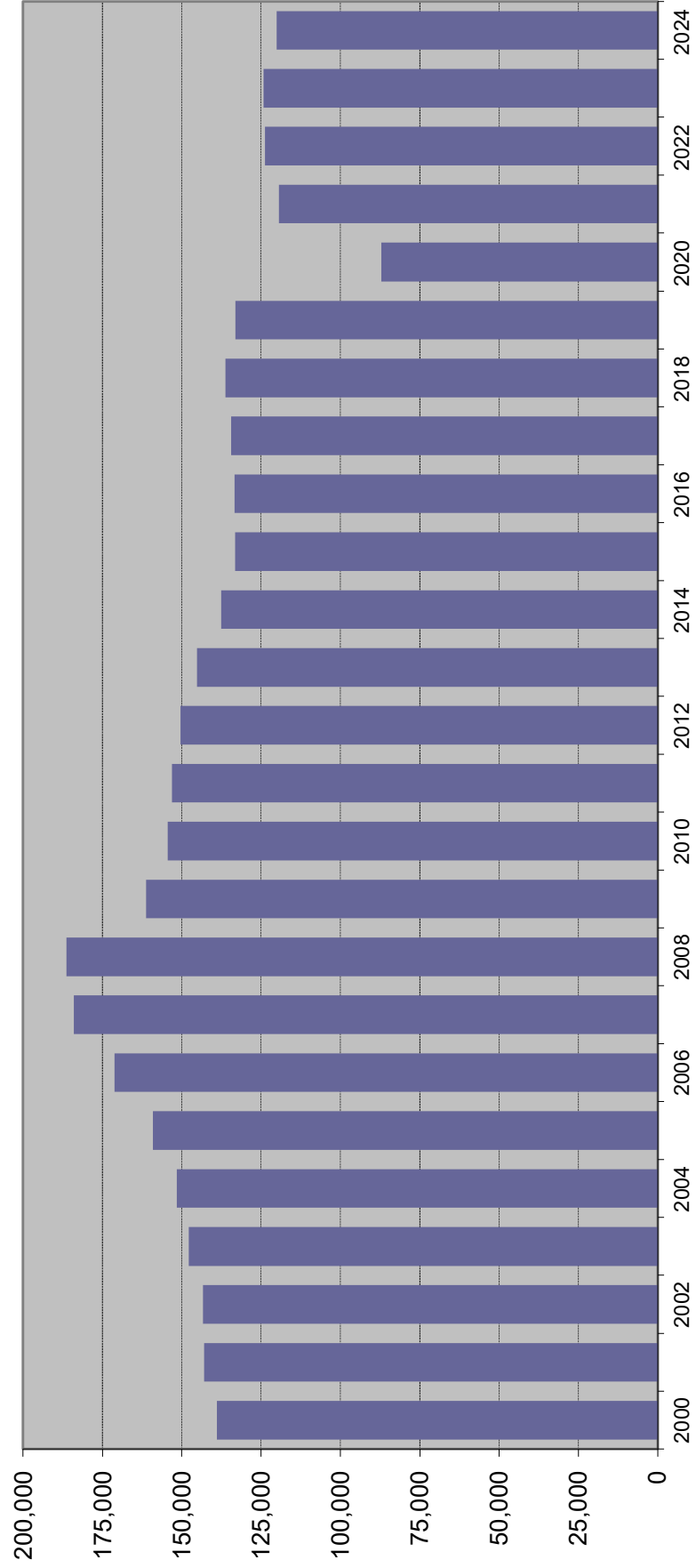
# FELONY FILINGS

## By Offense Type





# GUILTY DISPOSITIONS



## GUILTY DISPOSITIONS BY OFFENSE TYPE

Year	Violent <sup>1</sup>		Nonviolent <sup>2</sup>		Drug <sup>3</sup>		Total
2000	31,259	22.5%	63,235	45.5%	44,390	32.0%	138,884
2001	30,393	21.3%	67,502	47.2%	45,012	31.5%	142,907
2002	29,891	20.9%	68,907	48.1%	44,455	31.0%	143,253
2003	28,256	19.1%	73,039	49.4%	46,412	31.4%	147,707
2004	26,718	17.6%	74,606	49.2%	50,220	33.1%	151,544
2005	26,201	16.5%	78,734	49.5%	54,073	34.0%	159,008
2006	26,856	15.7%	85,704	50.1%	58,524	34.2%	171,084
2007	28,481	15.5%	94,797	51.5%	60,715	33.0%	183,993
2008	29,805	16.0%	98,355	52.8%	58,105	31.2%	186,265
2009	28,165	17.5%	84,483	52.4%	48,498	30.1%	161,146
2010	26,729	17.3%	82,453	53.4%	45,220	29.3%	154,402
2011	26,266	17.2%	84,928	55.5%	41,873	27.4%	153,067
2012	26,202	17.4%	84,198	56.0%	40,012	26.6%	150,412
2013	25,625	17.7%	81,828	56.4%	37,690	26.0%	145,143
2014	24,199	17.6%	77,025	56.0%	36,402	26.4%	137,626
2015	23,683	17.8%	74,001	55.6%	35,520	26.7%	133,204
2016	24,099	18.1%	72,671	54.5%	36,552	27.4%	133,322
2017	23,658	17.6%	71,432	53.1%	39,332	29.3%	134,422
2018	23,686	17.4%	69,108	50.7%	43,463	31.9%	136,257
2019	23,565	17.7%	66,237	49.8%	43,292	32.5%	133,094
2020	16,292	18.7%	42,984	49.3%	27,876	32.0%	87,152
2021	24,148	20.2%	56,884	47.6%	38,373	32.1%	119,405
2022	26,288	21.2%	59,201	47.9%	38,229	30.9%	123,718
2023	26,617	21.4%	58,951	47.4%	38,692	31.1%	124,260
2024	25,177	21.0%	56,272	46.9%	38,650	32.2%	120,099

Note: Filings for minimum-mandatory offenses prior to 1992 are excluded. The minimum-mandatory classification for filings was discontinued 7/1/91.

<sup>1</sup> Summary Reporting System categories of capital murder, non-capital murder, sexual offenses, robbery, and other crimes against persons.

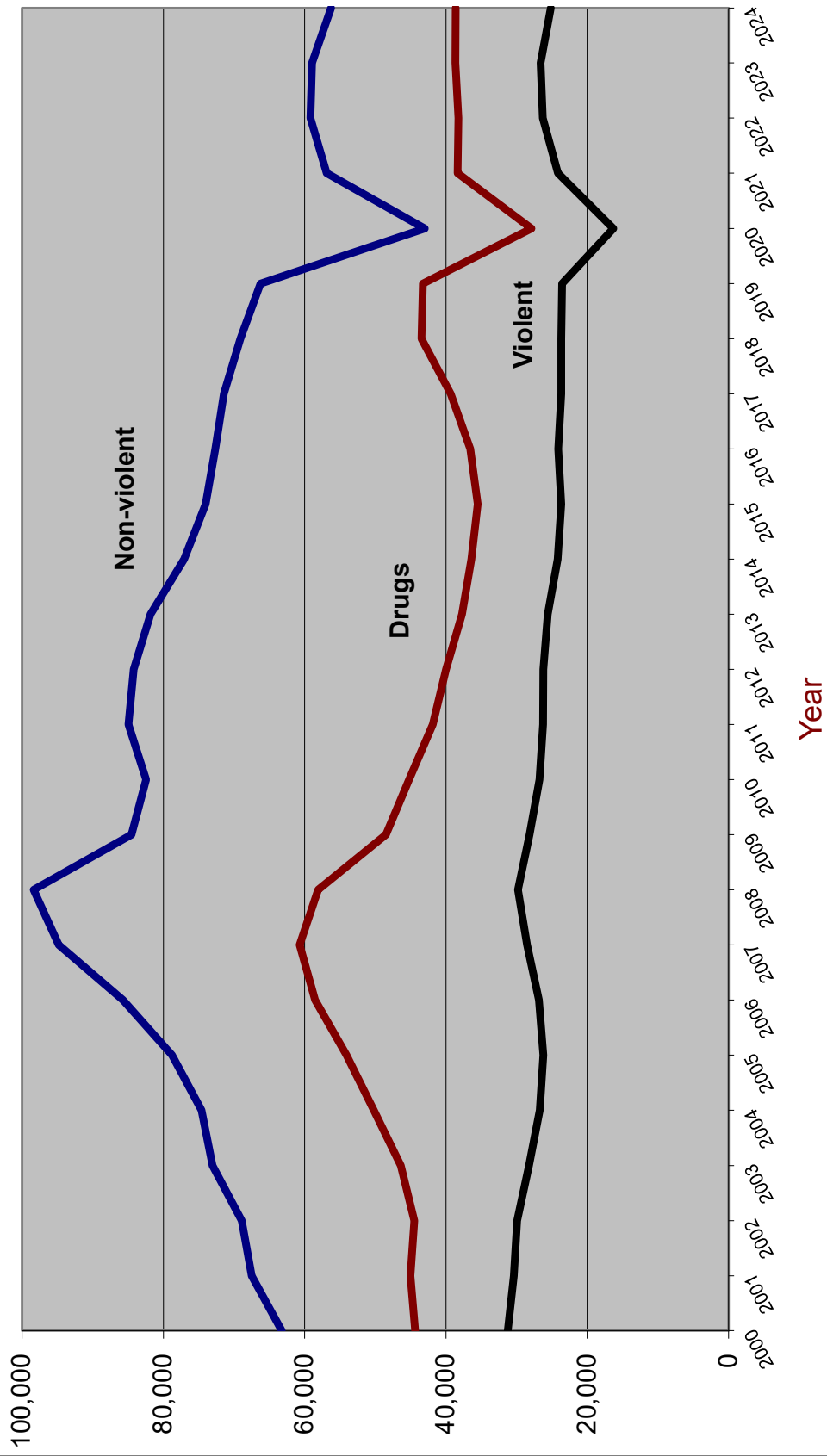
<sup>2</sup> Summary Reporting System categories of burglary, theft, forgery and fraud, worthless checks, other crimes against property and all other felonies.

<sup>3</sup> Summary Reporting System drug category.

Data Source: Office of State Courts Administrator, Summary Reporting System, Update run date: 2/25

# GUILTY DISPOSITIONS

## By Offense Type

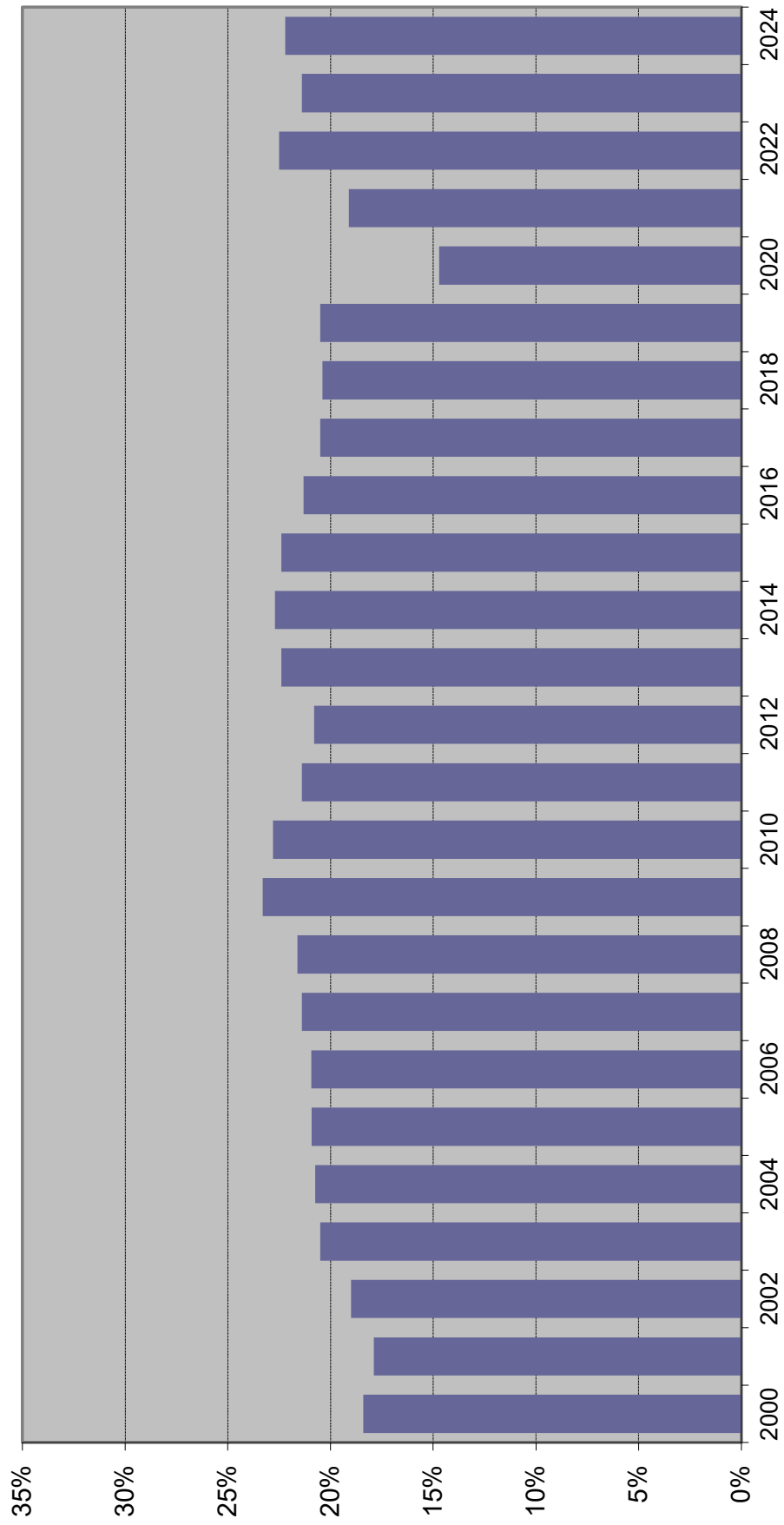


## RECENT TRENDS IN FELONY FILINGS AND GUILTY DISPOSITIONS

Felony Filings			Guilty Dispositions	
	Number	Percent Change	Number	Percent Change
2000	186,086	-2.1%	138,884	-5.4%
2001	184,571	-0.8%	142,907	2.9%
2002	184,295	-0.1%	143,253	0.2%
2003	187,379	1.7%	147,707	3.1%
2004	194,863	4.0%	151,544	2.6%
2005	208,540	7.0%	159,008	4.9%
2006	220,757	5.9%	171,084	7.6%
2007	230,822	4.6%	183,993	7.5%
2008	224,478	-2.7%	186,265	1.2%
2009	205,834	-8.3%	161,146	-13.5%
2010	202,469	-1.6%	154,402	-4.2%
2011	202,645	0.1%	153,067	-0.9%
2012	198,594	-2.0%	150,412	-1.7%
2013	185,654	-6.5%	145,143	-3.5%
2014	175,478	-5.5%	137,626	-5.2%
2015	171,156	-2.5%	133,204	-3.2%
2016	169,049	-1.2%	133,322	0.1%
2017	174,354	3.1%	134,422	0.8%
2018	178,925	2.6%	136,257	1.4%
2019	171,667	-4.1%	133,094	-2.3%
2020	148,006	-13.8%	87,152	-34.5%
2021	148,590	0.4%	119,405	37.0%
2022	150,355	1.2%	123,718	3.6%
2023	156,952	4.4%	124,260	0.4%
2024	146,466	-6.7%	120,099	-3.3%

Source: State Court Administrator, Summary Reporting System, (last updated with run done February 2025).

## Percent of Guilty Dispositions Imprisoned



## CRIMINAL JUSTICE SYSTEM MEASURES

	<u>1996</u>	<u>%</u> <u>Change</u>	<u>1997</u>	<u>%</u> <u>Change</u>	<u>1998</u>	<u>%</u> <u>Change</u>	<u>1999</u>	<u>%</u> <u>Change</u>	<u>2000</u>	<u>%</u> <u>Change</u>
<b>REPORTED CRIMES</b> (Part I, Index offenses)	1,075,698	-0.3%	1,069,885	-0.5%	1,021,352	-4.5%	930,313	-8.9%	891,757	-4.1%
Total Violent Offenses	147,425	-1.9%	146,929	-0.3%	135,925	-7.5%	124,823	-8.2%	124,090	-0.6%
<b>CRIME RATE<sup>2</sup></b> (per 100,000 Pop)	7,464.1	-2.1%	7,271.7	-2.6%	6,808.8	-6.4%	6,071.7	-10.8%	5,579.6	-8.1%
<b>ARRESTS</b>										
Part I	NA	NA	NA	NA	198,948	NA	184,606	-7.2%	174,235	-5.6%
Part II	NA	NA	NA	NA	681,243	NA	713,073	4.7%	708,624	-0.6%
TOTAL	685,992	-5.5%	686,565	0.1%	880,191	28.2%	897,679	2.0%	882,859	-1.7%
<b>FELONY</b> <b>FILINGS</b>	177,687	8.2%	184,163	3.6%	192,942	4.8%	190,051	-1.5%	186,086	-2.1%
<b>GUILTY</b> <b>DISPOSITIONS</b>	132,665	3.5%	141,736	6.8%	143,761	1.4%	146,882	2.2%	138,884	-5.4%
<b>GUILTIES AS PERCENT</b> <b>OF FILINGS</b>	74.7%		77.0%		74.5%		77.3%		74.6%	
<b>NEW COMMITMENTS</b> <b>TO PRISON</b>	20,792	2.5%	21,829	5.0%	22,645	3.7%	24,273	7.2%	25,541	5.2%
<b>% OF GUILTY</b> <b>DISPOSITIONS</b> <b>IMPRISONED</b>	15.7%		15.4%		15.8%		16.5%		18.4%	
<b>PRISON POPULATION</b> <b>ON JUNE 30</b>	64,333	3.8%	64,713	0.6%	66,280	2.4%	68,599	3.5%	71,233	3.8%

## CRIMINAL JUSTICE SYSTEM MEASURES

	<u>2001</u>	<u>%</u> <u>Change</u>	<u>2002</u>	<u>%</u> <u>Change</u>	<u>2003</u>	<u>%</u> <u>Change</u>	<u>2004</u>	<u>%</u> <u>Change</u>	<u>2005</u>	<u>%</u> <u>Change</u>
<b>REPORTED CRIMES</b> (Part I, Index offenses)										
Total Violent Offenses	906,749	1.7%	895,608	-1.2%	877,179	-2.1%	846,162	-3.5%	833,916	-1.4%
	125,783	1.4%	123,358	-1.9%	119,800	-2.9%	119,369	-0.4%	121,678	1.9%
<b>CRIME RATE<sup>2</sup></b> (per 100,000 Pop)	5,552.1	-0.5%	5,371.1	-3.3%	5,138.3	-4.3%	4,830.6	-6.0%	4,654.0	-3.7%
<b>ARRESTS</b>										
Part I	184,967	6.2%	179,649	-2.9%	180,392	0.4%	174,641	-3.2%	170,929	-2.1%
Part II	738,165	4.2%	733,438	-0.6%	794,531	8.3%	854,359	7.5%	885,192	3.6%
<b>TOTAL</b>	923,132	4.6%	913,087	-1.1%	974,923	6.8%	1,029,000	5.5%	1,056,121	2.6%
<b>FELONY FILINGS</b>	184,571	-0.8%	184,295	-0.1%	187,379	1.7%	194,863	4.0%	208,540	7.0%
<b>GUILTY DISPOSITIONS</b>	142,907	2.9%	143,253	0.2%	147,707	3.1%	151,544	2.6%	159,008	4.9%
<b>GUILTIES AS PERCENT OF FILINGS</b>	77.4%		77.7%		78.8%		77.8%		76.2%	
<b>NEW COMMITMENTS TO PRISON</b>	25,571	0.1%	27,176	6.3%	30,340	11.6%	31,445	3.6%	33,249	5.7%
<b>% OF GUILTY DISPOSITIONS IMPRISONED</b>	17.9%		19.0%		20.5%		20.7%		20.9%	
<b>PRISON POPULATION ON JUNE 30</b>	72,007	1.1%	73,553	2.1%	77,316	5.1%	81,974	6.0%	84,901	3.6%

## CRIMINAL JUSTICE SYSTEM MEASURES

	<u>2006</u>	<u>%</u> <u>Change</u>	<u>2007</u>	<u>%</u> <u>Change</u>	<u>2008</u>	<u>%</u> <u>Change</u>	<u>2009</u>	<u>%</u> <u>Change</u>	<u>2010</u>	<u>%</u> <u>Change</u>
<b>REPORTED CRIMES</b> (Part I, Index offenses)										
Total Violent Offenses	846,190	1.5%	873,314	3.2%	880,345	0.8%	821,132	-6.7%	767,175	-6.6%
	125,765	3.4%	128,114	1.9%	122,512	-4.4%	109,988	-10.2%	98,564	-10.4%
<b>CRIME RATE<sup>2</sup></b> (per 100,000 Pop)	4,611.6	-0.9%	4,675.0	1.4%	4,680.9	0.1%	4,379.3	-6.4%	4,086.9	-6.7%
<b>ARRESTS</b>										
Part I	169,399	-0.9%	184,478	8.9%	200,532	8.7%	192,630	-3.9%	174,177	-9.6%
Part II	941,277	6.3%	942,046	0.1%	949,401	0.8%	857,299	-9.7%	846,320	-1.3%
<b>TOTAL</b>	1,110,676	5.2%	1,126,524	1.4%	1,149,933	2.1%	1,049,929	-8.7%	1,020,497	-2.8%
<b>FELONY</b> <b>FILINGS</b>	220,757	5.9%	230,822	4.6%	224,478	-2.7%	205,834	-8.3%	202,469	-1.6%
<b>GUILTY</b> <b>DISPOSITIONS</b>	171,084	7.6%	183,993	7.5%	186,265	1.2%	161,146	-13.5%	154,402	-4.2%
<b>GUILTIES AS PERCENT</b> <b>OF FILINGS</b>	77.5%		79.7%		83.0%		78.3%		76.3%	
<b>NEW COMMITMENTS</b> <b>TO PRISON</b>	35,724	7.4%	39,376	10.2%	40,274	2.3%	37,480	-6.9%	35,181	-6.1%
<b>% OF GUILTY</b> <b>DISPOSITIONS</b> <b>IMPRISONED</b>	20.9%		21.4%		21.6%		23.3%		22.8%	
<b>PRISON POPULATION</b> <b>ON JUNE 30</b>	88,576	4.3%	92,844	4.8%	98,192	5.8%	100,894	2.8%	102,232	1.3%



## CRIMINAL JUSTICE SYSTEM MEASURES

	<u>2011</u>	<u>%</u> <u>Change</u>	<u>2012</u>	<u>%</u> <u>Change</u>	<u>2013</u>	<u>%</u> <u>Change</u>	<u>2014</u>	<u>%</u> <u>Change</u>	<u>2015</u>	<u>%</u> <u>Change</u>
<b>REPORTED CRIMES</b> (Part I, Index offenses)	766,138	-0.1%	722,326	-5.7%	695,307	-3.7%	670,080	-3.6%	659,125	-1.6%
Total Violent Offenses	94,841	-3.8%	90,415	-4.7%	88,565	-2.0%	87,958	-0.7%	90,204	2.6%
<b>CRIME RATE</b> (per 100,000 Pop)	4,052.6	-0.8%	3,786.9	-6.6%	3,610.2	-4.7%	3,435.0	-4.9%	3,326.4	-3.2%
<b>ARRESTS</b>										
Part I	169,863	-2.5%	165,210	-2.7%	162,015	-1.9%	157,326	-2.9%	152,054	-3.4%
Part II	782,811	-7.5%	795,236	1.6%	750,537	-5.6%	709,758	-5.4%	621,120	-12.5%
TOTAL	952,674	-6.6%	960,446	0.8%	912,552	-5.0%	867,084	-5.0%	773,174	-10.8%
<b>FELONY</b> <b>FILINGS</b>	202,645	0.1%	198,594	-2.0%	185,654	-6.5%	175,478	-5.5%	171,156	-2.5%
<b>GUILTY</b> <b>DISPOSITIONS</b>	153,067	-0.9%	150,412	-1.7%	145,143	-3.5%	137,626	-5.2%	133,204	-3.2%
<b>GUILTIES AS PERCENT</b> <b>OF FILINGS</b>	75.5%		75.7%		78.2%		78.4%		77.8%	
<b>NEW COMMITMENTS</b> <b>TO PRISON</b>	32,726	-7.0%	31,324	-4.3%	32,578	4.0%	31,194	-4.2%	29,849	-4.3%
<b>% OF GUILTY</b> <b>DISPOSITIONS</b> <b>IMPRISONED</b>	21.4%		20.8%		22.4%		22.7%		22.4%	
<b>PRISON POPULATION</b> <b>ON JUNE 30</b>	102,319	0.1%	100,527	-1.8%	100,884	0.4%	100,942	0.1%	100,050	-0.9%

## CRIMINAL JUSTICE SYSTEM MEASURES

	<u>2016</u>	<u>%</u> <u>Change</u>	<u>2017</u>	<u>%</u> <u>Change</u>	<u>2018</u>	<u>%</u> <u>Change</u>	<u>2019</u>	<u>%</u> <u>Change</u>	<u>2020</u>	<u>%</u> <u>Change</u>
<b>REPORTED CRIMES</b> (Part I, Index offenses)										
Total Violent Offenses	640,985	-2.8%	612,445	-4.5%	567,176	-7.4%	541,328	-4.6%	466,048	-13.9%
	88,470	-1.9%	85,515	-3.3%	81,906	-4.2%	81,091	-1.0%	83,290	2.7%
<b>CRIME RATE</b> (per 100,000 Pop)										
	3,181.3	-4.4%	2,989.8	-6.0%	2,721.4	-9.0%	2,552.4	-6.2%	2,158.0	-15.5%
<b>ARRESTS</b>										
Part I	137,435	-9.6%	126,195	-8.2%	124,019	-1.7%	118,592	-4.4%	99,980	-15.7%
Part II	589,056	-5.2%	585,636	-0.6%	594,735	1.6%	560,629	-5.7%	408,510	-27.1%
TOTAL	726,491	-6.0%	711,831	-2.0%	718,754	1.0%	679,221	-5.5%	508,490	-25.1%
<b>FELONY</b> <b>FILINGS</b>										
	169,049	-1.2%	174,354	3.1%	178,925	2.6%	171,667	-4.1%	148,006	-13.8%
<b>GUILTY</b> <b>DISPOSITIONS</b>										
	133,322	0.1%	134,422	0.8%	136,257	1.4%	133,094	-2.3%	87,152	-34.5%
<b>GUILTIES AS PERCENT</b> <b>OF FILINGS</b>										
	78.9%		77.1%		76.2%		77.5%		58.9%	
<b>NEW COMMITMENTS</b> <b>TO PRISON</b>										
	28,404	-4.8%	27,579	-2.9%	27,808	0.8%	27,242	-2.0%	12,834	-52.9%
<b>% OF GUILTY</b> <b>DISPOSITIONS</b> <b>IMPRISONED</b>										
	21.3%		20.5%		20.4%		20.5%		14.7%	
<b>PRISON POPULATION</b> <b>ON JUNE 30</b>										
	99,119	-0.9%	97,794	-1.3%	96,253	-1.6%	95,626	-0.7%	87,736	-8.3%

## CRIMINAL JUSTICE SYSTEM MEASURES

	<u>2021</u>	<u>%</u> <u>Change</u>	<u>2022</u>	<u>%</u> <u>Change</u>	<u>2023</u>	<u>%</u> <u>Change</u>	<u>2024</u>	<u>%</u> <u>Change</u>
<b>REPORTED CRIMES</b> (Part I, Index offenses)	427,524	-8.3%						
Total Violent Offenses	80,823	-3.0%						
<b>CRIME RATE</b> (per 100,000 Pop)	1,952.3	-9.5%						
<b>ARRESTS</b>								
Part I	90,199	-9.8%						
Part II	452,939	10.9%						
TOTAL	543,138	6.8%						
<b>FELONY</b> <b>FILINGS</b>	148,590	0.4%	150,355	1.2%	156,952	4.4%	146,466	-6.7%
<b>GUILTY</b> <b>DISPOSITIONS</b>	119,405	37.0%	123,718	3.6%	124,260	0.4%	120,099	-3.3%
<b>GUILTIES AS PERCENT</b> <b>OF FILINGS</b>	80.4%		82.3%		79.2%		82.0%	
<b>NEW COMMITMENTS</b> <b>TO PRISON</b>	22,769	77.4%	27,792	22.1%	26,644	-4.1%	26,645	0.0%
<b>% OF GUILTY</b> <b>DISPOSITIONS</b> <b>IMPRISONED</b>	19.1%		22.5%		21.4%		22.2%	
<b>PRISON POPULATION</b> <b>ON JUNE 30</b>	80,495	-8.3%	82,124	2.0%	85,174	3.7%	87,303	2.5%

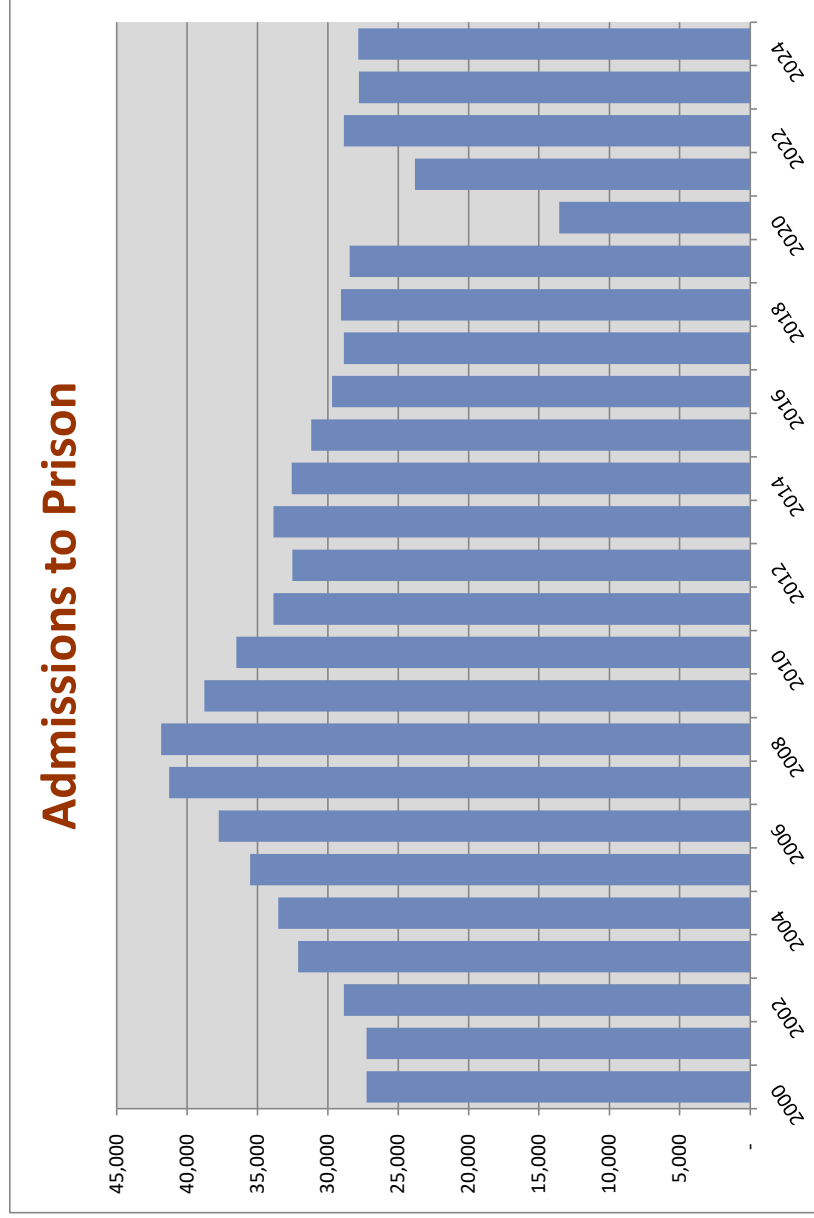
Data Sources:

Reported Crimes, Total Violent Crimes, Crime Rate, Arrests: Florida Dept. of Law Enforcement, Uniform Crime Reports.  
 Felony Filings and Guilty Dispositions: State Court Administrator, Summary Reporting System, last updated with run from February 2025.  
 Prison Admissions and Prison Population: Florida Department of Corrections, Research and Data Analysis.

## ADMISSIONS TO PRISON BY CALENDAR YEAR

% Change  
from prior  
year

2000	27,248	5.0%
2001	27,248	0.0%
2002	28,869	5.9%
2003	32,109	11.2%
2004	33,524	4.4%
2005	35,525	6.0%
2006	37,752	6.3%
2007	41,268	9.3%
2008	41,844	1.4%
2009	38,773	-7.3%
2010	36,501	-5.9%
2011	33,864	-7.2%
2012	32,512	-4.0%
2013	33,866	4.2%
2014	32,568	-3.8%
2015	31,169	-4.3%
2016	29,702	-4.7%
2017	28,873	-2.8%
2018	29,047	0.6%
2019	28,453	-2.0%
2020	13,543	-52.4%
2021	23,822	75.9%
2022	28,866	21.2%
2023	27,776	-3.8%
2024	27,838	0.2%



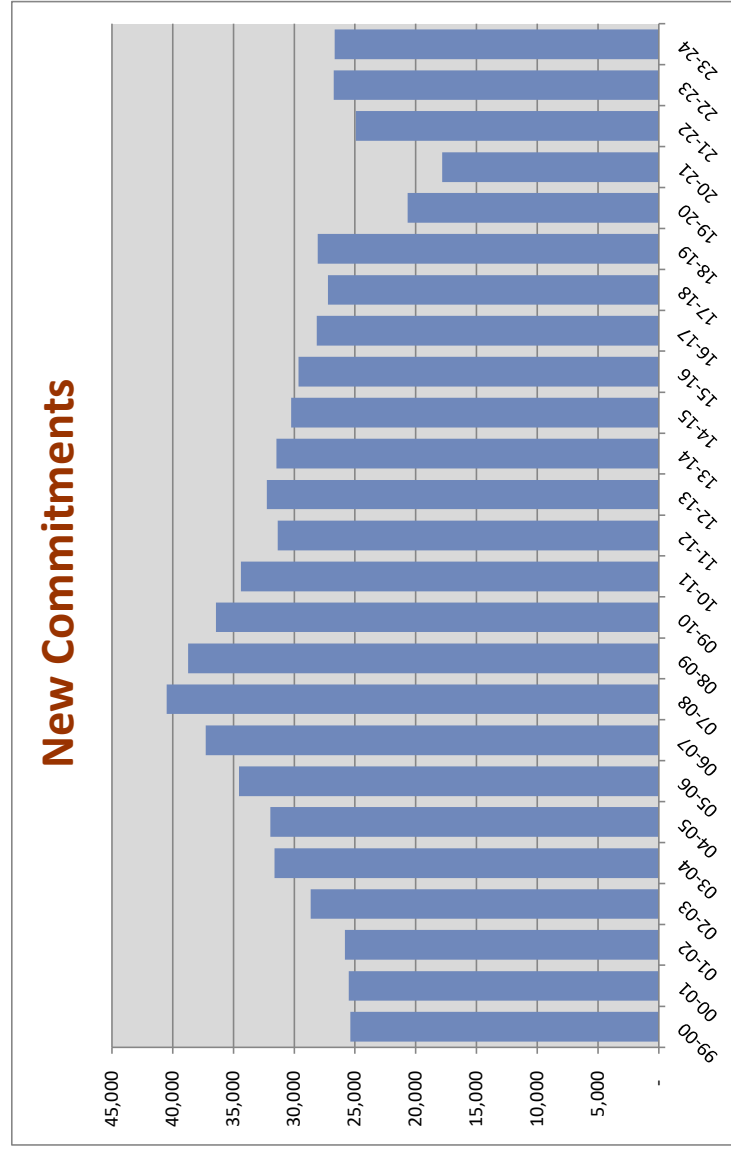
Includes conditional release and control release violators **with** and **without** new sentences.

## NEW COMMITMENTS BY FISCAL YEAR

% Change from  
prior year

FY 99-00	25,379	8.3%
FY 00-01	25,525	0.6%
FY 01-02	25,854	1.3%
FY 02-03	28,658	10.8%
FY 03-04	31,638	10.4%
FY 04-05	31,964	1.0%
FY 05-06	34,546	8.1%
FY 06-07	37,299	8.0%
FY 07-08	40,491	8.6%
FY 08-09	38,735	-4.3%
FY 09-10	36,450	-5.9%
FY 10-11	34,394	-5.6%
FY 11-12	31,376	-8.8%
FY 12-13	32,279	2.9%
FY 13-14	31,472	-2.5%
FY 14-15	30,278	-3.8%
FY 15-16	29,652	-2.1%
FY 16-17	28,154	-5.1%
FY 17-18	27,235	-3.3%
FY 18-19	28,064	3.0%
FY 19-20	20,664	-26.4%
FY 20-21	17,830	-13.7%
FY 21-22	24,931	39.8%
FY 22-23	26,747	7.3%
FY 23-24	26,677	-0.3%

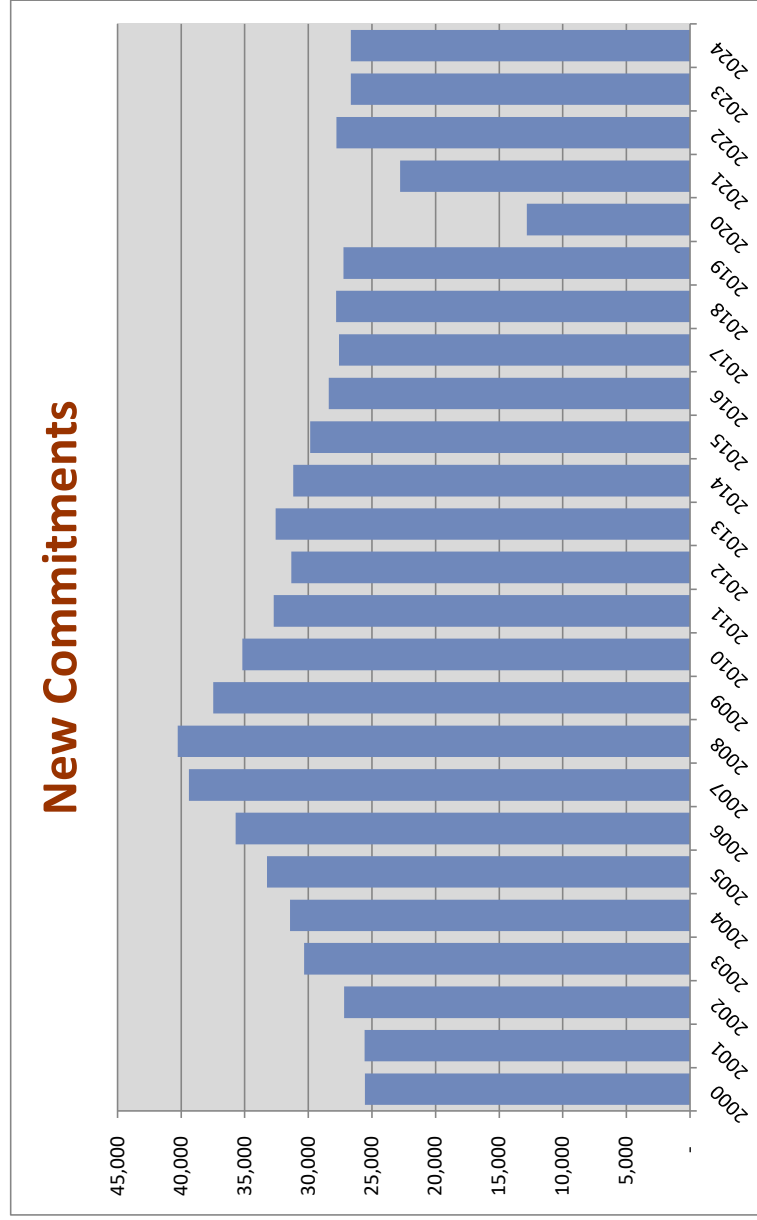
Includes conditional release and control release violators with new sentences.



## NEW COMMITMENTS BY CALENDAR YEAR

% Change  
from prior  
year

2000	25,541	5.2%
2001	25,571	0.1%
2002	27,176	6.3%
2003	30,340	11.6%
2004	31,445	3.6%
2005	33,249	5.7%
2006	35,724	7.4%
2007	39,376	10.2%
2008	40,274	2.3%
2009	37,480	-6.9%
2010	35,181	-6.1%
2011	32,726	-7.0%
2012	31,324	-4.3%
2013	32,578	4.0%
2014	31,194	-4.2%
2015	29,849	-4.3%
2016	28,404	-4.8%
2017	27,579	-2.9%
2018	27,808	0.8%
2019	27,242	-2.0%
2020	12,834	-52.9%
2021	22,769	77.4%
2022	27,792	22.1%
2023	26,644	-4.1%
2024	26,645	0.0%



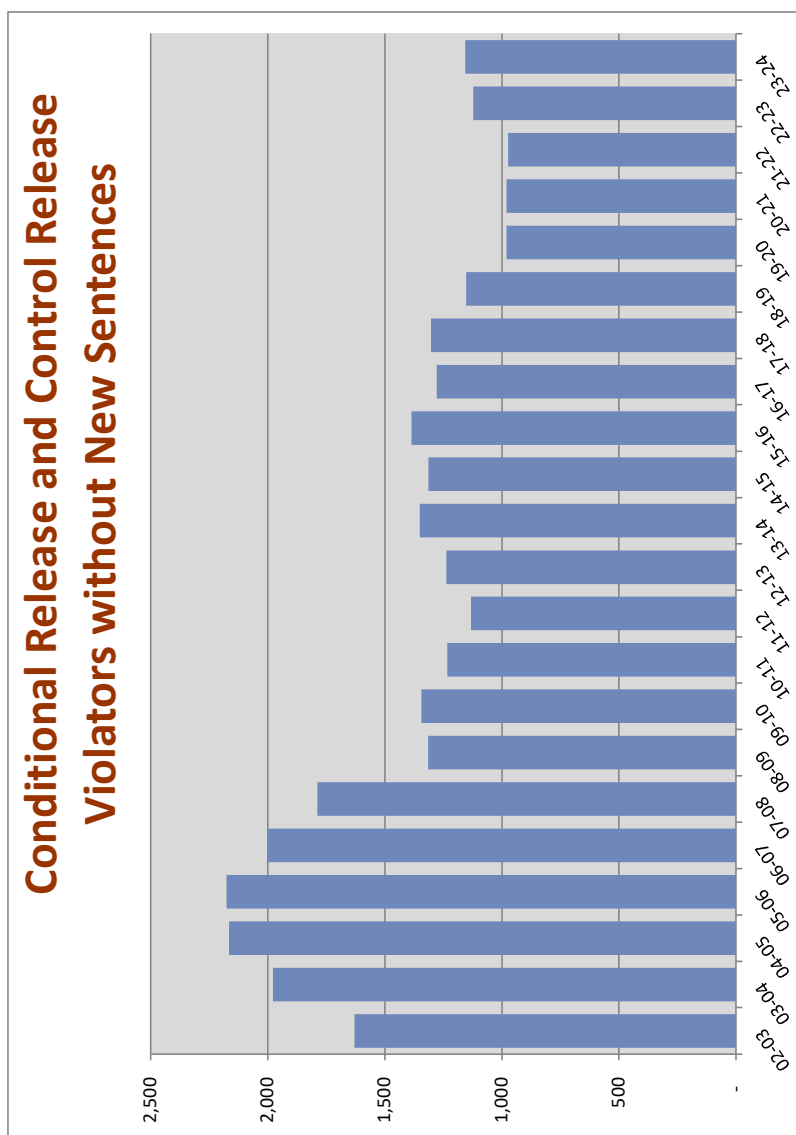
Includes conditional release and control release violators with new sentences.

## Conditional Release and Control Release Violators without New Sentences

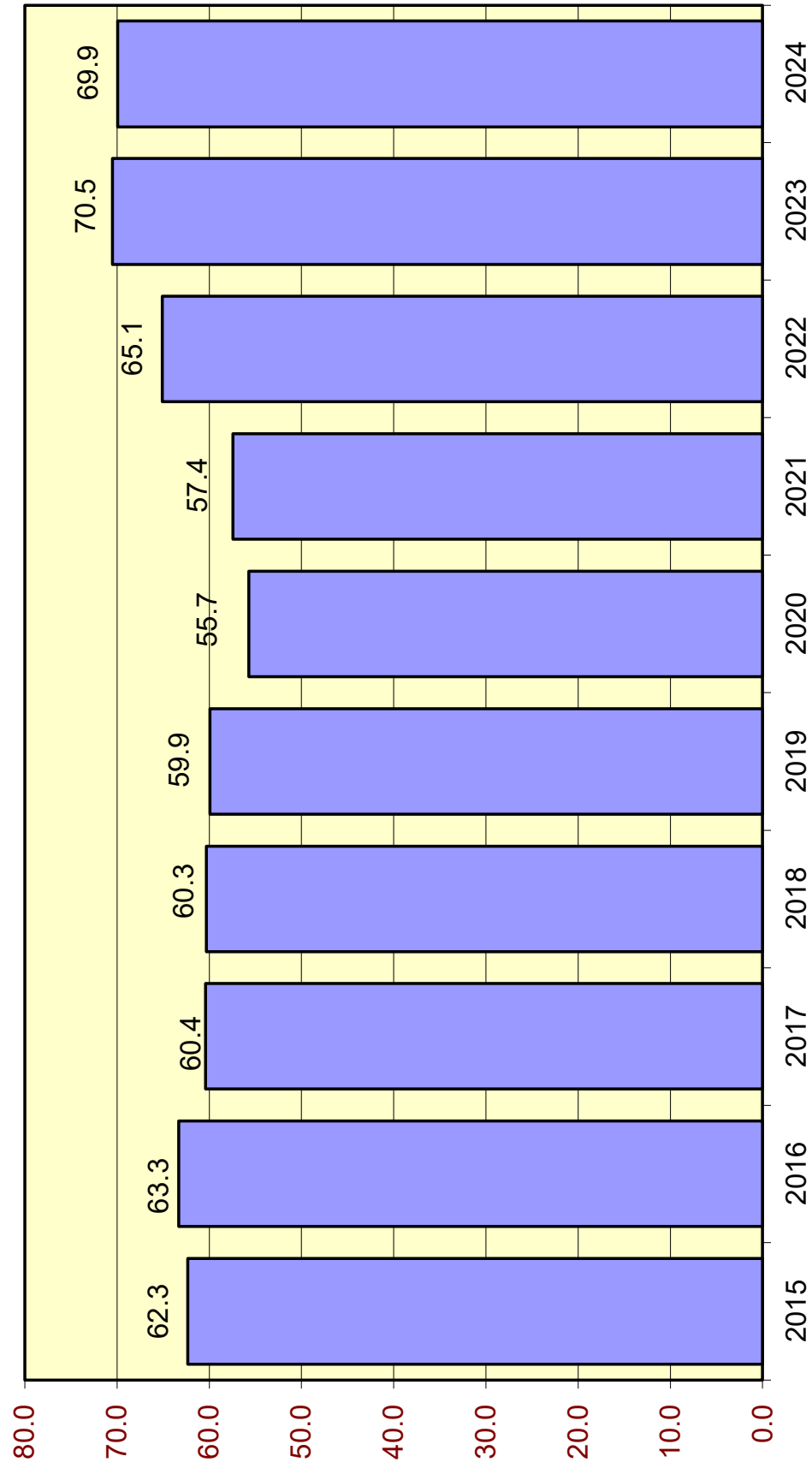
% Change from  
prior year

FY 02-03	1,629	-4.7%
FY 03-04	1,977	21.4%
FY 04-05	2,165	9.5%
FY 05-06	2,176	0.5%
FY 06-07	2,001	-8.0%
FY 07-08	1,788	-10.6%
FY 08-09	1,315	-26.5%
FY 09-10	1,344	2.2%
FY 10-11	1,233	-8.3%
FY 11-12	1,132	-8.2%
FY 12-13	1,237	9.3%
FY 13-14	1,350	9.1%
FY 14-15	1,314	-2.7%
FY 15-16	1,386	5.5%
FY 16-17	1,278	-7.8%
FY 17-18	1,303	2.0%
FY 18-19	1,152	-11.6%
FY 19-20	980	-14.9%
FY 20-21	980	0.0%
FY 21-22	974	-0.6%
FY 22-23	1,123	15.3%
* FY 23-24	1,156	2.9%

\*This number may change slightly as revisions are made through 2024.

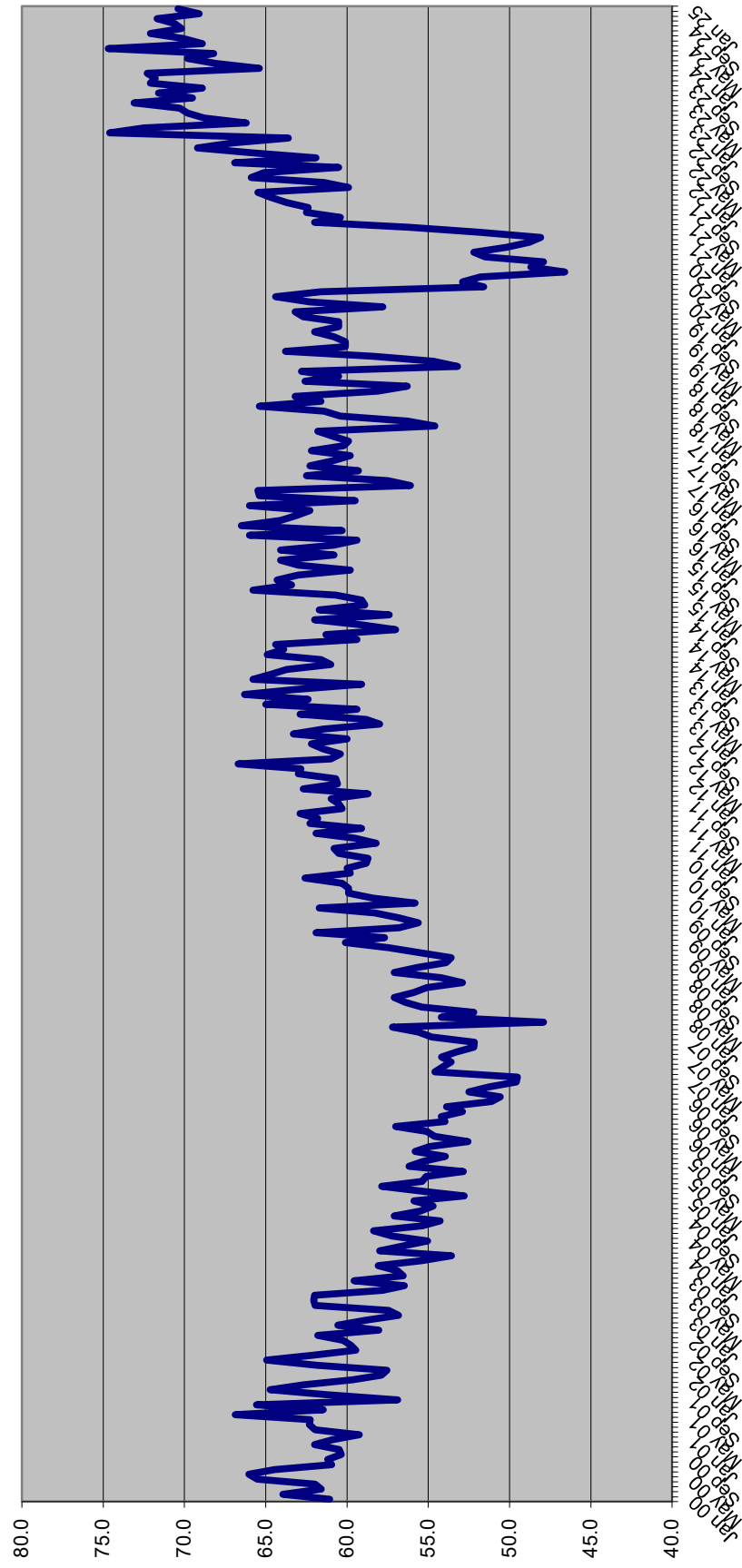


## Average Sentence Length for New Commitments by Calendar Year





## Average Sentence Length (in months) for New Commitments



## SENTENCE LENGTH DISTRIBUTIONS FOR NEW COMMITMENTS BY MONTH

Sentence Length	Jul 24	Aug 24	Sep 24	Oct 24	Nov 24	Dec 24	Jan 25
	%	%	%	%	%	%	%
12 - 15 m	16.1%	15.5%	17.5%	15.8%	15.5%	15.2%	14.5%
16 - 21 m	12.8%	12.9%	13.4%	13.8%	13.1%	12.7%	14.1%
22 - 27 m	12.3%	11.7%	11.8%	11.1%	9.9%	12.0%	12.0%
28 - 33 m	5.5%	5.8%	6.4%	5.1%	6.3%	6.2%	4.8%
34 - 39 m	12.5%	11.9%	11.5%	13.4%	12.5%	12.5%	12.0%
40 - 45 m	4.1%	3.2%	2.5%	3.4%	3.9%	3.8%	3.5%
46 - 51 m	5.7%	5.7%	5.2%	4.6%	5.2%	5.6%	4.8%
52 - 57 m	1.3%	1.5%	1.5%	1.6%	1.5%	1.2%	1.2%
58 - 78 m	9.3%	10.2%	8.5%	9.7%	9.5%	9.6%	10.8%
79 - 102 m	4.8%	4.8%	5.2%	4.6%	5.6%	5.8%	4.7%
GT 102 m	15.8%	16.8%	16.4%	16.8%	17.1%	15.4%	17.6%
	100.0%	100.0%	100.0%	100.0%	100.0%	100.0%	100.0%

### Cumulative Percentage

Sentence Length	Jul 24	Aug 24	Sep 24	Oct 24	Nov 24	Dec 24	Jan 25
	%	%	%	%	%	%	%
12 - 15 m	16.1%	15.5%	17.5%	15.8%	15.5%	15.2%	14.5%
16 - 21 m	28.9%	28.4%	31.0%	29.6%	28.6%	27.9%	28.6%
22 - 27 m	41.1%	40.1%	42.8%	40.7%	38.5%	39.9%	40.6%
28 - 33 m	46.6%	45.9%	49.2%	45.9%	44.7%	46.1%	45.4%
34 - 39 m	59.1%	57.8%	60.7%	59.3%	57.2%	58.7%	57.4%
40 - 45 m	63.2%	61.1%	63.2%	62.7%	61.2%	62.5%	60.9%
46 - 51 m	68.9%	66.8%	68.4%	67.3%	66.4%	68.1%	65.6%
52 - 57 m	70.1%	68.2%	69.9%	68.9%	67.8%	69.2%	66.9%
58 - 78 m	79.4%	78.4%	78.4%	78.6%	77.3%	78.8%	77.7%
79 - 102 m	84.2%	83.2%	83.6%	83.2%	82.9%	84.6%	82.4%
GT 102 m	100.0%	100.0%	100.0%	100.0%	100.0%	100.0%	100.0%

### Percent of all sentences that are a year and a day

Jul 24	Aug 24	Sep 24	Oct 24	Nov 24	Dec 24	Jan 25
%	%	%	%	%	%	%
7.5%	7.3%	8.0%	7.4%	7.6%	7.5%	7.3%

### Average sentence length

Avg Sentence Length	Jul 24	Aug 24	Sep 24	Oct 24	Nov 24	Dec 24	Jan 25
	Average	Average	Average	Average	Average	Average	Average
Months	70.1	72.1	70.2	70.6	71.7	69.1	70.4
In years	5.8	6.0	5.9	5.9	6.0	5.8	5.9

**SENTENCE LENGTH DISTRIBUTION OF NEW COMMITMENTS AND CHANGE  
FY 22-23 TO FY 23-24**

	<b>FY 22-23</b>	<b>FY 23-24</b>	<b>Change</b>	<b>Percent Change</b>
<b>366 days</b>	1,974	1,933	(41)	-2.1%
<b>367 days-15 m</b>	2,082	2,170	88	4.2%
<b>16 - 21 m</b>	3,484	3,578	94	2.7%
<b>22 - 27 m</b>	3,249	3,196	(53)	-1.6%
<b>28 - 33 m</b>	1,554	1,438	(116)	-7.5%
<b>34 - 39 m</b>	3,268	3,311	43	1.3%
<b>40 - 45 m</b>	850	854	4	0.5%
<b>46 - 51 m</b>	1,450	1,416	(34)	-2.3%
<b>52 - 57 m</b>	332	316	(16)	-4.8%
<b>58 - 78 m</b>	2,870	2,748	(122)	-4.3%
<b>79 - 102 m</b>	1,326	1,366	40	3.0%
<b>GT 102 m</b>	4,308	4,351	43	1.0%
<b>Total</b>	26,747	26,677	(70)	-0.3%

**SENTENCE LENGTH DISTRIBUTION OF NEW COMMITMENTS AND CHANGE  
Jul 23-Feb 24 TO Jul 24-Feb 25**

	<b>Jul 23-Jan 24</b>	<b>Jul 24-Jan 25</b>	<b>Change</b>	<b>Percent Change</b>
<b>366 days</b>	1,067	1,130	63	5.9%
<b>367 days-15 m</b>	1,241	1,235	(6)	-0.5%
<b>16 - 21 m</b>	2,068	1,997	(71)	-3.4%
<b>22 - 27 m</b>	1,816	1,739	(77)	-4.2%
<b>28 - 33 m</b>	802	857	55	6.9%
<b>34 - 39 m</b>	1,897	1,862	(35)	-1.8%
<b>40 - 45 m</b>	475	531	56	11.8%
<b>46 - 51 m</b>	809	790	(19)	-2.3%
<b>52 - 57 m</b>	189	207	18	9.5%
<b>58 - 78 m</b>	1,525	1,458	(67)	-4.4%
<b>79 - 102 m</b>	758	759	1	0.1%
<b>GT 102 m</b>	2,450	2,492	42	1.7%
<b>Total</b>	15,097	15,057	(40)	-0.3%

Source: Monthly datafile of status population on the last day of the month obtained from the Department of Corrections, Bureau of Research and Data Analysis. In FY 23-24, this file contained 94 percent of new commitments. Numbers were inflated to match new commitment totals obtained from DOC.

### Year-and-a-Day New Commitments by Fiscal Year

Fiscal year	Total New Commitments	Year-and-a-Day New Commitments		
		Number	Change	% Change
FY 10-11	34,394	2,879	(722)	-20.0%
FY 11-12	31,376	2,281	(598)	-20.8%
FY 12-13	32,279	2,126	(155)	-6.8%
FY 13-14	31,472	2,493	367	17.3%
FY 14-15	30,278	2,302	(191)	-7.7%
FY 15-16	29,652	2,260	(42)	-1.8%
FY 16-17	28,154	2,276	16	0.7%
FY 17-18	27,235	2,044	(232)	-10.2%
FY 18-19	28,064	2,360	316	15.5%
FY 19-20	20,664	1,603	(757)	-32.1%
FY 20-21	17,830	1,112	(491)	-30.6%
FY 21-22	24,931	1,725	613	55.1%
FY 22-23	26,747	1,974	249	14.4%
FY 23-24	26,677	1,933	(41)	-2.1%

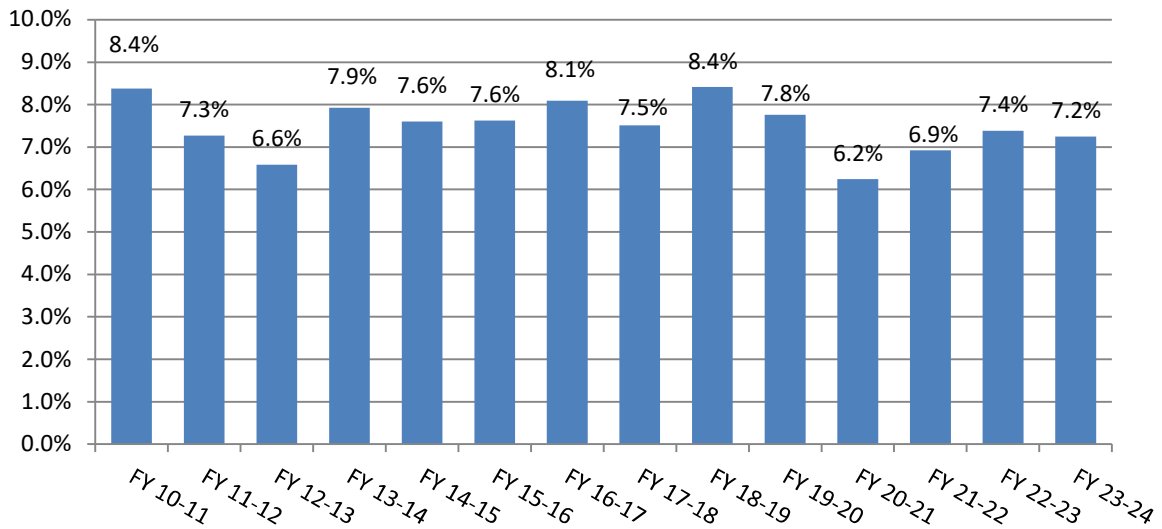
Source: Unadjusted new commitments and year-and-a-day new commitments were obtained from the monthly datafile of status population on the last day of the month obtained from the Department of Corrections, Bureau of Research and Analysis. In FY 23-24, this file contained 94 percent of new commitments. Total new commitment numbers shown above match new commitment fiscal year totals obtained from DOC and year-and-a-day new commitments were adjusted to reflect fiscal year totals.

### Year-and-a-Day New Commitments by Calendar Year

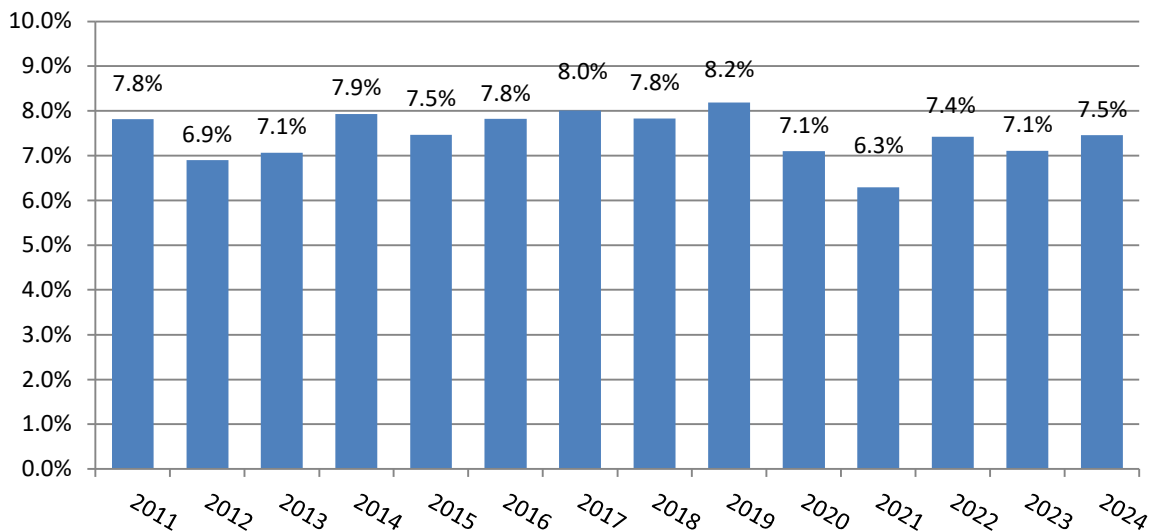
Calendar year	Total New Commitments	Year-and-a-Day New Commitments		
		Number	Change	% Change
2011	32,726	2,557	(625)	-19.6%
2012	31,324	2,163	(394)	-15.4%
2013	32,578	2,303	140	6.5%
2014	31,194	2,474	171	7.4%
2015	29,849	2,228	(246)	-9.9%
2016	28,404	2,221	(7)	-0.3%
2017	27,579	2,209	(12)	-0.5%
2018	27,808	2,179	(30)	-1.4%
2019	27,242	2,230	51	2.3%
2020	12,834	911	(1,319)	-59.1%
2021	22,769	1,433	522	57.3%
2022	27,792	2,063	630	44.0%
2023	26,644	1,894	(169)	-8.2%
2024	26,645	1,987	93	4.9%

Source: Unadjusted new commitments and year-and-a-day new commitments were obtained from the monthly datafile of status population on the last day of the month obtained from the Department of Corrections, Bureau of Research and Analysis. This file contains approximately 94 percent of new commitments. Total new commitment numbers shown above match new commitment fiscal year totals obtained from DOC and year-and-a-day new commitments were adjusted to reflect fiscal year totals.

### Year-and-a-Day New Commitments as Percent of All New Commitments--FY



### Year-and-a-Day New Commitments as Percent of All New Commitments--CY

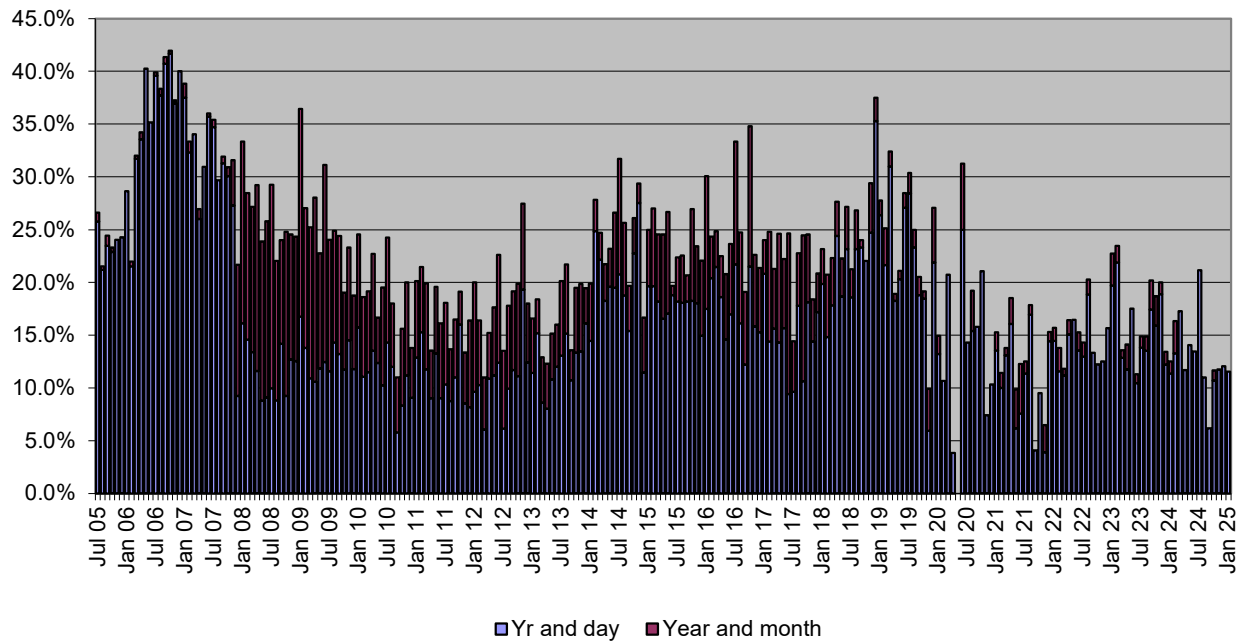


## Year-and-a-Day New Commitments and Change by County

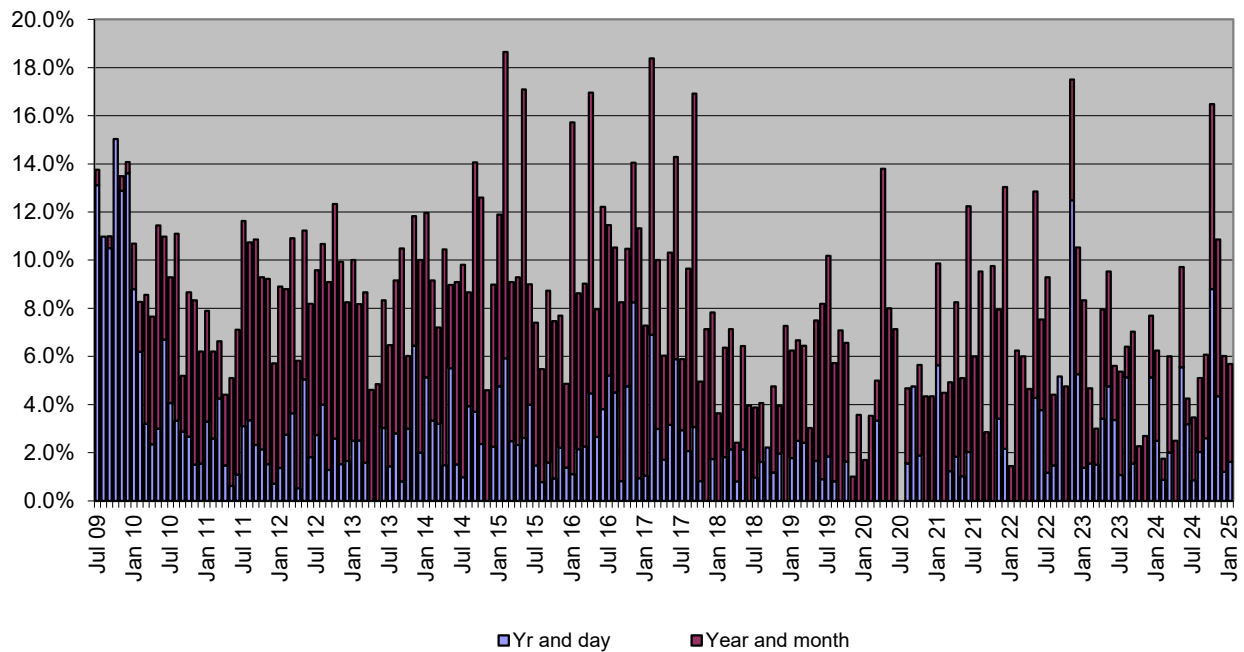
County	Jul 23-Jan 24	Jul 24-Jan 25	↓ Change	% Change
Brevard	8	36	28	360.3%
Sarasota	6	20	14	251.5%
Miami-Dade	107	120	13	11.9%
St. Johns	3	15	12	355.7%
Bay	3	13	10	290.6%
Marion	17	26	9	56.2%
Pinellas	14	23	8	57.7%
Putnam	35	42	8	22.8%
Lake	4	12	8	168.5%
<b>Sub-total</b>	197	307	110	55.5%
Orange	33	25	(8)	-25.1%
Taylor	17	3	(13)	-80.5%
Hillsborough	107	87	(20)	-18.6%
<b>Sub-total</b>	157	115	(42)	-26.7%
<b>All other counties</b>	713	708	(5)	-0.8%
<b>Total</b>	1,067	1,130	63	5.9%

Source: Monthly status file of prison population prepared by Bureau of Research and Data Analysis, Department of Corrections. Numbers were inflated to account for missing records on the monthly status file.

**Year-and-a-day and year-and-a-month sentences as percent of total:  
Hillsborough County**



**Year-and-a-day and year-and-a-month sentences as percent of total:  
Pinellas County**



## Counties with the Most New Commitments

County	<div style="text-align: center;">↓</div>		% of state total	% of state total
			Jul 23-Jan 24	Jul 24-Jan 25
Duval	1,157	1,176	7.7%	7.8%
Pinellas	685	775	4.5%	5.1%
Miami-Dade	814	762	5.4%	5.1%
Polk	802	752	5.3%	5.0%
Volusia	739	723	4.9%	4.8%
Hillsborough	712	703	4.7%	4.7%
Broward	707	682	4.7%	4.5%
Marion	491	646	3.3%	4.3%
Palm Beach	585	614	3.9%	4.1%
Escambia	513	469	3.4%	3.1%
Sub-total	7,206	7,301	47.7%	48.5%
All other counties	7,891	7,756	52.3%	51.5%
<b>Total</b>	<b>15,097</b>	<b>15,057</b>	<b>100.0%</b>	<b>100.0%</b>



## New Commitments and Change in New Commitments by County

County	Jul 23-Jan 24	Jul 24-Jan 25	Change	% Change
Leon	322	257	(65)	-20.2%
Bay	516	454	(62)	-12.0%
Miami-Dade	814	762	(52)	-6.4%
Polk	802	752	(50)	-6.2%
Collier	190	143	(47)	-24.7%
Escambia	513	469	(44)	-8.6%
Sumter	163	129	(34)	-20.9%
Sub-total	3,320	2,966	(354)	-10.7%
Clay	140	183	43	30.7%
Alachua	341	399	58	17.0%
Putnam	185	243	58	31.4%
St. Lucie	274	338	64	23.4%
Pinellas	685	775	90	13.1%
Marion	491	646	155	31.6%
Sub-total	2,116	2,584	468	22.1%
All other counties	9,661	9,507	(154)	-1.6%
<b>Total</b>	<b>15,097</b>	<b>15,057</b>	<b>(40)</b>	<b>-0.3%</b>

Source: Monthly status file of prison population prepared by Bureau of Research and Data Analysis, Department of Corrections. This file contained 94 percent of new commitments, however county of commitment is sometimes missing. According to DOC, offenders entering prison near the end of the month may not have this information available by the time the status file is run at the end of the month. It was assumed that these missing data would not bias the county of commitment distribution. Therefore, these numbers were inflated to match new commitment totals.

## Population, Total New Commitments, and Year-and-a-Day New Commitments by County

County	4/1/2024 Official population	4/1/2024 Official population percentage distribution	FY 23-24 new commitments	FY 23-24 new commitments percentage distribution	FY 23-24 year- and-a- day sentences	FY 23-24 year- and-a-day sentences percentage distribution	FY 23-24 year- and-a-day sentences as percent of all new commitments
Alachua	296,313	1.3%	637	2.4%	4	0.2%	0.7%
Baker	28,899	0.1%	124	0.5%	2	0.1%	1.8%
Bay	196,112	0.9%	859	3.2%	7	0.3%	0.8%
Bradford	27,335	0.1%	155	0.6%	6	0.3%	3.6%
Brevard	653,703	2.8%	627	2.4%	31	1.6%	4.9%
Broward	1,981,888	8.6%	1,202	4.5%	168	8.7%	14.0%
Calhoun	13,700	0.1%	72	0.3%	0	0.0%	0.0%
Charlotte	210,645	0.9%	242	0.9%	6	0.3%	2.3%
Citrus	166,151	0.7%	345	1.3%	25	1.3%	7.4%
Clay	236,365	1.0%	285	1.1%	1	0.1%	0.4%
Collier	408,381	1.8%	324	1.2%	1	0.1%	0.3%
Columbia	72,155	0.3%	445	1.7%	20	1.0%	4.5%
DeSoto	35,487	0.2%	146	0.5%	35	1.8%	24.2%
Dixie	17,555	0.1%	108	0.4%	25	1.3%	23.6%
Duval	1,062,593	4.6%	2,050	7.7%	12	0.6%	0.6%
Escambia	336,358	1.5%	852	3.2%	34	1.8%	4.0%
Flagler	136,310	0.6%	208	0.8%	31	1.6%	14.9%
Franklin	13,321	0.1%	34	0.1%	3	0.2%	9.7%
Gadsden	44,853	0.2%	70	0.3%	11	0.6%	15.7%
Gilchrist	19,503	0.1%	30	0.1%	0	0.0%	0.0%
Glades	12,815	0.1%	15	0.1%	1	0.1%	7.2%
Gulf	16,947	0.1%	52	0.2%	1	0.1%	2.1%
Hamilton	14,228	0.1%	81	0.3%	10	0.5%	12.2%
Hardee	25,883	0.1%	39	0.1%	4	0.2%	11.5%
Hendry	45,413	0.2%	83	0.3%	1	0.1%	1.3%
Hernando	210,577	0.9%	298	1.1%	33	1.7%	11.1%
Highlands	106,109	0.5%	194	0.7%	17	0.9%	8.6%
Hillsborough	1,560,449	6.8%	1,255	4.7%	183	9.4%	14.5%
Holmes	20,059	0.1%	123	0.5%	0	0.0%	0.0%
Indian River	171,029	0.7%	140	0.5%	11	0.6%	7.9%
Jackson	49,345	0.2%	152	0.6%	6	0.3%	3.6%
Jefferson	15,667	0.1%	36	0.1%	7	0.3%	18.3%
Lafayette	8,504	0.0%	23	0.1%	2	0.1%	9.6%
Lake	433,331	1.9%	324	1.2%	18	0.9%	5.5%
Lee	827,016	3.6%	745	2.8%	0	0.0%	0.0%
Leon	302,197	1.3%	538	2.0%	55	2.9%	10.3%
Levy	45,845	0.2%	96	0.4%	1	0.1%	1.2%
Liberty	8,016	0.0%	29	0.1%	3	0.2%	11.6%
Madison	18,649	0.1%	54	0.2%	10	0.5%	18.5%
Manatee	455,356	2.0%	516	1.9%	13	0.7%	2.6%
Marion	419,510	1.8%	804	3.0%	31	1.6%	3.9%
Martin	164,853	0.7%	244	0.9%	7	0.3%	2.7%
Miami-Dade	2,774,841	12.1%	1,473	5.5%	181	9.4%	12.3%
Monroe	84,147	0.4%	131	0.5%	3	0.2%	2.5%
Nassau	103,990	0.5%	156	0.6%	2	0.1%	1.4%
Okaloosa	221,806	1.0%	254	1.0%	0	0.0%	0.0%
Okeechobee	40,230	0.2%	117	0.4%	1	0.1%	0.9%
Orange	1,511,568	6.6%	786	2.9%	61	3.1%	7.7%
Osceola	451,231	2.0%	269	1.0%	9	0.5%	3.3%
Palm Beach	1,545,905	6.7%	1,023	3.8%	165	8.5%	16.1%
Pasco	633,029	2.8%	634	2.4%	29	1.5%	4.5%
Pinellas	971,218	4.2%	1,232	4.6%	25	1.3%	2.1%
Polk	826,090	3.6%	1,506	5.6%	96	5.0%	6.4%
Putnam	76,138	0.3%	372	1.4%	74	3.8%	19.9%

## Population, Total New Commitments, and Year-and-a-Day New Commitments by County

County	4/1/2024 Official population	4/1/2024 Official population percentage distribution	FY 23-24 new commitments	FY 23-24 new commitments percentage distribution	FY 23-24 year- and-a- day sentences	FY 23-24 year- and-a-day sentences percentage distribution	FY 23-24 year- and-a-day sentences as percent of all new commitments
St. Johns	331,479	1.4%	277	1.0%	10	0.5%	3.6%
St. Lucie	385,746	1.7%	535	2.0%	45	2.3%	8.5%
Santa Rosa	207,983	0.9%	310	1.2%	2	0.1%	0.7%
Sarasota	479,027	2.1%	402	1.5%	20	1.0%	5.0%
Seminole	493,282	2.1%	447	1.7%	34	1.8%	7.7%
Sumter	156,743	0.7%	253	0.9%	11	0.6%	4.4%
Suwannee	46,519	0.2%	162	0.6%	9	0.5%	5.5%
Taylor	21,802	0.1%	153	0.6%	23	1.2%	15.2%
Union	16,100	0.1%	45	0.2%	0	0.0%	0.0%
Volusia	594,643	2.6%	1,266	4.7%	276	14.3%	21.8%
Wakulla	37,313	0.2%	39	0.1%	1	0.1%	2.9%
Walton	87,728	0.4%	129	0.5%	0	0.0%	0.0%
Washington	26,568	0.1%	53	0.2%	17	0.9%	31.4%
<b>Total</b>	<b>23,014,551</b>	<b>100.0%</b>	<b>26,677</b>	<b>100.0%</b>	<b>1,933</b>	<b>100.0%</b>	<b>7.2%</b>

Source: Population data are from the University of Florida, Bureau of Research and Data Analysis. New commitments and year-and-a-day sentences are from monthly status file of prison population prepared by Bureau of Research and Data Analysis, Department of Corrections. Numbers were inflated to account for missing data on the monthly status file.

## FLORIDA NEW COMMITMENTS

	Time period		Percent		Change	Percent Change	Average Sentence Length (months)	
	Jul 23-Jan 24	Jul 24-Jan 25	Jul 23-Jan 24	Jul 24-Jan 25			Jul 23-Jan 24	Jul 24-Jan 25
Murder/Manslaughter	874	850	5.8%	5.6%	(24)	-2.7%	287.8	291.0
Sexual/Lewd Behavior	1,081	1,084	7.2%	7.2%	3	0.3%	172.8	169.1
Robbery	630	594	4.2%	3.9%	(36)	-5.7%	94.8	96.9
Violent, Other	2,586	2,583	17.1%	17.2%	(3)	-0.1%	51.0	54.8
Burglary	1,722	1,657	11.4%	11.0%	(65)	-3.8%	57.9	53.1
Property Theft/Fraud/Damage	1,598	1,608	10.6%	10.7%	10	0.6%	30.3	31.8
Drugs	3,775	3,913	25.0%	26.0%	138	3.7%	45.4	47.2
Weapons	1,407	1,309	9.3%	8.7%	(98)	-7.0%	42.0	41.4
Other	1,424	1,459	9.4%	9.7%	35	2.5%	35.7	37.6
<b>Total</b>	15,097	15,057	100.0%	100.0%	(40)	-0.3%	70.2	70.6

Source: Monthly status file of prison population prepared by Bureau of Research and Data Analysis, Department of Corrections. In FY 23-24, this file contained 94 percent of new commitments however sentencing details are often missing. According to DOC, offenders entering prison near the end of the month may not have this information available by the time the status file is run at the end of the month. It was assumed that these missing data would not bias the primary offense distribution. Therefore, the primary offense distribution was adjusted to match new commitment totals for this analysis.

## FLORIDA NEW COMMITMENTS FOR WEAPONS OFFENSES

	Time period		Percent		Change	Percent Change	Average Sentence Length (months)	
	Jul 23-Jan 24	Jul 24-Jan 25	Jul 23-Jan 24	Jul 24-Jan 25			Jul 23-Jan 24	Jul 24-Jan 25
Possession of a firearm by a convicted felon	1,235	1,146	87.8%	87.5%	(89)	-7.2%	41.9	39.6
Shoot/throw missile into building/vehicle	87	87	6.2%	6.6%	-	0.0%	52.6	54.3
Carrying concealed weapon	41	30	2.9%	2.3%	(11)	-26.8%	22.5	31.3
Other weapons offenses	44	47	3.1%	3.6%	3	6.8%	42.1	68.3
Total	1,407	1,309	100.0%	100.1%	(98)	-7.0%	42.0	41.4

Note: Data were obtained from monthly status files prepared by Bureau of Research and Data Analysis, Florida Department of Corrections and were adjusted to account for missing data.

## FLORIDA NEW COMMITMENTS FOR "BURGLARY" OFFENSES

	Time period		Percent		Change	Percent Change	Average Sentence Length (months)	
	Jul 23-Jan 24	Jul 24-Jan 25	Jul 23-Jan 24	Jul 24-Jan 25			Jul 23-Jan 24	Jul 24-Jan 25
Burglary of an occupied dwelling	655	620	38.0%	37.4%	(35)	-5.3%	52.1	51.9
Burglary of an unoccupied structure	554	558	32.2%	33.7%	4	0.7%	30.1	29.2
Burglary, armed with explosive or weapon	189	156	11.0%	9.4%	(33)	-17.5%	106.8	105.8
Burglary assault any person	181	151	10.5%	9.1%	(30)	-16.6%	125.2	108.4
Remainder of offenses in "Burglary" category	143	172	8.3%	10.4%	29	20.3%	43.3	38.8
<b>Total</b>	1,722	1,657	100.0%	100.0%	(65)	-3.8%	57.9	53.1

Note: Data were obtained from monthly status files prepared by Bureau of Research and Data Analysis, Florida Department of Corrections and were adjusted to account for missing data.

## FLORIDA NEW COMMITMENTS FOR DRUG OFFENSES

	Time period		Percent		Change	Percent Change	Average Sentence Length (months)	
	Jul 23-Jan 24	Jul 24-Jan 25	Jul 23-Jan 24	Jul 24-Jan 25			Jul 23-Jan 24	Jul 24-Jan 25
Trafficking offenses	1,251	1,285	33.1%	32.8%	34	2.7%	78.1	81.3
Cocaine S/M/D	358	370	9.5%	9.5%	12	3.4%	35.7	33.1
Cocaine possession	329	350	8.7%	8.9%	21	6.4%	24.0	27.2
Methamphetamine offenses	884	832	23.4%	21.3%	(52)	-5.9%	25.5	26.1
Sell cocaine etc. within 1000 ft of school or other restricted place	132	189	3.5%	4.8%	57	43.2%	54.9	60.9
S/M/D Other Sch I and II	189	239	5.0%	6.1%	50	26.5%	32.8	35.4
Possess controlled substance (other)	401	451	10.6%	11.5%	50	12.5%	24.8	23.6
Heroin S/M/D	26	15	0.7%	0.4%	(11)	-42.3%	34.0	55.6
Possess heroin under 10 grams	29	18	0.8%	0.5%	(11)	-37.9%	23.7	19.2
Other drug offenses	176	164	4.7%	4.2%	(12)	-6.8%	30.1	29.7
<b>Total</b>	3,775	3,913	100.0%	100.0%	138	3.7%	45.4	47.2

Note: Data were obtained from monthly status files prepared by Bureau of Research and Data Analysis, Florida Department of Corrections and were adjusted to account for missing data.

## FLORIDA YEAR-AND-A-DAY NEW COMMITMENTS

	Time period		Percent		Change	Percent Change
	Jul 23-Jan 24	Jul 24-Jan 25	Jul 23-Jan 24	Jul 24-Jan 25		
Murder/Manslaughter	4	3	0.4%	0.3%	(1)	-25.0%
Sexual/Lewd Behavior	8	12	0.7%	1.1%	4	50.0%
Robbery	32	36	3.0%	3.2%	4	12.5%
Violent, Other	187	162	17.5%	14.3%	(25)	-13.4%
Burglary	135	145	12.7%	12.8%	10	7.4%
Property Theft/Fraud/Damage	174	207	16.3%	18.3%	33	19.0%
Drugs	284	344	26.6%	30.4%	60	21.1%
Weapons	92	71	8.6%	6.3%	(21)	-22.8%
Other	151	150	14.2%	13.3%	(1)	-0.7%
<b>Total</b>	<b>1,067</b>	<b>1,130</b>	<b>100.0%</b>	<b>100.0%</b>	<b>63</b>	<b>5.9%</b>

Source: Monthly status file of prison population prepared by Bureau of Research and Data Analysis, Department of Corrections. In FY 23-24, this file contained 94 percent of new commitments however sentencing details are often missing. According to DOC, offenders entering prison near the end of the month may not have this information available by the time the status file is run at the end of the month. It was assumed that these missing data would not bias the primary offense distribution. Therefore, the primary offense distribution was adjusted to match new commitment totals for this analysis.



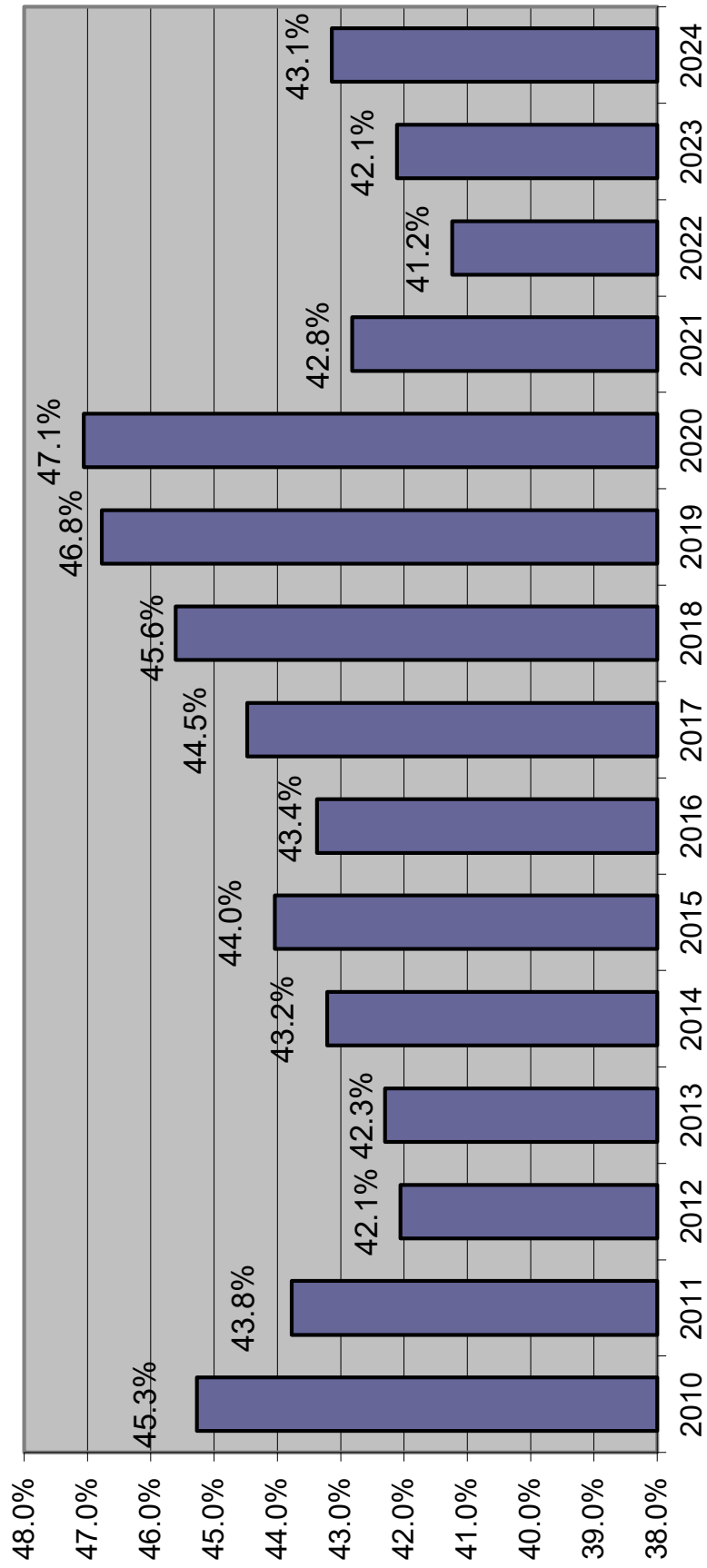
## FLORIDA NEW COMMITMENTS WITH YEAR-AND-A-DAY SENTENCES

### Jul-Jan 24 and Jul-Jan 25

	Time period		Percent		Change	Percent Change
	Jul 23-Jan 24	Jul 24-Jan 25	Jul 23-Jan 24	Jul 24-Jan 25		
Possess methamphetamine	85	87	8.0%	7.7%	2	2.4%
Burglary of an unoccupied structure	71	69	6.7%	6.1%	(2)	-2.8%
Possession of a firearm etc. by convicted felon	78	64	7.3%	5.7%	(14)	-17.9%
Possess controlled substance (other)	41	64	3.8%	5.7%	23	56.1%
Cocaine possession	45	59	4.2%	5.2%	14	31.1%
Petit theft/3rd conviction	39	53	3.7%	4.7%	14	35.9%
Burglary of a dwelling	34	45	3.2%	4.0%	11	32.4%
Grand theft (GE \$750/LT \$5,000)	34	44	3.2%	3.9%	10	29.4%
Grand theft motor vehicle	30	30	2.8%	2.7%	-	0.0%
Cocaine S/M/D	28	30	2.6%	2.7%	2	7.1%
Simple battery (3 or more convictions)	13	27	1.2%	2.4%	14	107.7%
Sex offender failure to register	29	27	2.7%	2.4%	(2)	-6.9%
Traffic in stolen property	27	26	2.5%	2.3%	(1)	-3.7%
Sale/Manufacture/Deliver Other Schedule I & II	12	25	1.1%	2.2%	13	108.3%
Flee LEO/no regard	23	24	2.2%	2.1%	1	4.3%
Methamphetamine S/M/D	13	21	1.2%	1.9%	8	61.5%
Robbery, no firearm or deadly weapon	23	16	2.2%	1.4%	(7)	-30.4%
Battery LEO/Firefighter/EMS/etc.	22	16	2.1%	1.4%	(6)	-27.3%
Aggravated assault with weapon/no intent to kill	19	15	1.8%	1.3%	(4)	-21.1%
Willful flee/elude LEO	22	15	2.1%	1.3%	(7)	-31.8%
Aggravated battery with deadly weapon	24	12	2.2%	1.1%	(12)	-50.0%
Battery upon a person 65 or older	9	12	0.8%	1.1%	3	33.3%
Criminal mischief, property damage	8	11	0.7%	1.0%	3	37.5%
Flee/elude LEO--felony	11	11	1.0%	1.0%	-	0.0%
Aggravated battery intended harm	8	10	0.7%	0.9%	2	25.0%
Felony battery	10	10	0.9%	0.9%	-	0.0%
Retail Theft (GE \$750)	5	10	0.5%	0.9%	5	100.0%
Fraudulent use of personal ID	3	10	0.3%	0.9%	7	233.3%
Resisting officer with violence	23	9	2.2%	0.8%	(14)	-60.9%
Transient sex offender, failure to report	4	7	0.4%	0.6%	3	75.0%
Sudden snatch, no weapon	3	7	0.3%	0.6%	4	133.3%
Domestic battery (strangulation)	6	7	0.6%	0.6%	1	16.7%
Grand theft (GE \$20,000/LT \$100,000)	3	7	0.3%	0.6%	4	133.3%
Habitual traffic offender	10	7	0.9%	0.6%	(3)	-30.0%
Traffic cocaine (GE 28 grams/LT 200 grams)	3	7	0.3%	0.6%	4	133.3%
False imprisonment	3	6	0.3%	0.5%	3	100.0%
Traffic MDMA, Phenethylamine (GE 10 grams/LT 200	6	6	0.6%	0.5%	-	0.0%
<b>Sub-total</b>	<b>827</b>	<b>906</b>	<b>77.5%</b>	<b>80.2%</b>	<b>79</b>	<b>9.6%</b>
<b>All other year-and-a-day offenses</b>	<b>240</b>	<b>224</b>	<b>22.5%</b>	<b>19.8%</b>	<b>(16)</b>	<b>-6.7%</b>
<b>Total</b>	<b>1,067</b>	<b>1,130</b>	<b>100.0%</b>	<b>100.0%</b>	<b>63</b>	<b>5.9%</b>

Note: Data were obtained from monthly status files prepared by Bureau of Research and Data Analysis, Florida Department of Corrections and were adjusted to account for missing data.

## Third Degree Felonies as Percent of New Commitments



## Prison Admissions Sentenced Under Ch. 99-12 (3-10-20-Life)

### LONGEST MANDATORY SENTENCE LENGTH

	Equal to or greater than 3 yrs but less than 10 yrs	Equal to or greater than 10 yrs but less than 20 yrs	Equal to or greater than 20 yrs but less than 25 yrs	Equal to or greater than 25 yrs but less than LIFE	LIFE	INMATES ADMITTED BY YEAR	CUMULATIVE TOTAL INMATES ADMITTED	10-20-Life population on June 30
FY 99-00	101	45	4	5	-	155	155	147
FY 00-01	310	234	26	29	7	606	761	729
FY 01-02	288	321	32	49	2	692	1,453	1,385
FY 02-03	303	327	50	64	18	762	2,215	1,985
FY 03-04	393	352	52	69	11	877	3,092	2,583
FY 04-05	317	360	48	90	12	827	3,919	3,170
FY 05-06	346	338	51	91	23	849	4,768	3,729
FY 06-07	425	350	63	105	19	962	5,730	4,377
FY 07-08	429	483	102	121	27	1,162	6,892	5,244
FY 08-09	521	589	99	117	22	1,348	8,240	6,222
FY 09-10	553	628	99	133	23	1,436	9,676	7,113
FY 10-11	529	548	110	148	24	1,359	11,035	7,897
FY 11-12	544	507	92	142	40	1,325	12,360	8,576
FY 12-13	631	506	75	167	23	1,402	13,762	9,284
FY 13-14	560	455	100	174	24	1,313	15,075	9,887
FY 14-15	585	470	81	138	35	1,309	16,384	10,434
FY 15-16	593	455	89	140	25	1,302	17,686	10,929
FY 16-17	719	445	84	146	24	1,418	19,104	11,483
FY 17-18	694	385	60	149	21	1,309	20,413	11,806
FY 18-19	735	367	66	130	20	1,318	21,731	12,057
FY 19-20	505	247	48	124	13	937	22,668	11,963
FY 20-21	447	192	18	49	7	713	23,381	11,610
FY 21-22	766	343	56	147	16	1,328	24,709	11,742
FY 22-23	861	409	91	189	27	1,577	26,286	12,270
FY 23-24	905	348	90	201	34	1,578	27,864	12,803

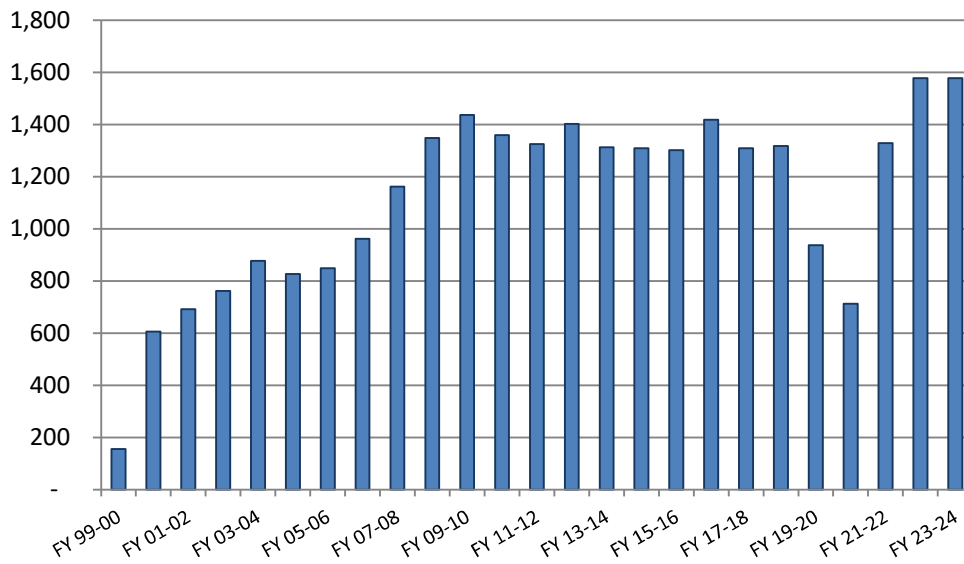
### PERCENTAGE CHANGE FROM PRIOR YEAR

	Equal to or greater than 3 yrs but less than 10 yrs	Equal to or greater than 10 yrs but less than 20 yrs	Equal to or greater than 20 yrs but less than 25 yrs	Equal to or greater than 25 yrs but less than LIFE	LIFE	INMATES ADMITTED BY YEAR	10-20-Life population on June 30
FY 00-01	206.9%	420.0%	550.0%	480.0%	NA	291.0%	395.9%
FY 01-02	-7.1%	37.2%	23.1%	69.0%	-71.4%	14.2%	90.0%
FY 02-03	5.2%	1.9%	56.3%	30.6%	800.0%	10.1%	43.3%
FY 03-04	29.7%	7.6%	4.0%	7.8%	-38.9%	15.1%	30.1%
FY 04-05	-19.3%	2.3%	-7.7%	30.4%	9.1%	-5.7%	22.7%
FY 05-06	9.1%	-6.1%	6.3%	1.1%	91.7%	2.7%	17.6%
FY 06-07	22.8%	3.6%	23.5%	15.4%	-17.4%	13.3%	17.4%
FY 07-08	0.9%	38.0%	61.9%	15.2%	42.1%	20.8%	19.8%
FY 08-09	21.4%	21.9%	-2.9%	-3.3%	-18.5%	16.0%	18.6%
FY 09-10	6.1%	6.6%	0.0%	13.7%	4.5%	6.5%	14.3%
FY 10-11	-4.3%	-12.7%	11.1%	11.3%	4.3%	-5.4%	11.0%
FY 11-12	2.8%	-7.5%	-16.4%	-4.1%	66.7%	-2.5%	8.6%
FY 12-13	16.0%	-0.2%	-18.5%	17.6%	-42.5%	5.8%	8.3%
FY 13-14	-11.3%	-10.1%	33.3%	4.2%	4.3%	-6.3%	6.5%
FY 14-15	4.5%	3.3%	-19.0%	-20.7%	45.8%	-0.3%	5.5%
FY 15-16	1.4%	-3.2%	9.9%	1.4%	-28.6%	-0.5%	4.7%
FY 16-17	21.2%	-2.2%	-5.6%	4.3%	-4.0%	8.9%	5.1%
FY 17-18	-3.5%	-13.5%	-28.6%	2.1%	-12.5%	-7.7%	2.8%
FY 18-19	5.9%	-4.7%	10.0%	-12.8%	-4.8%	0.7%	2.1%
FY 19-20	-31.3%	-32.7%	-27.3%	-4.6%	-35.0%	-28.9%	-0.8%
FY 20-21	-11.5%	-22.3%	-62.5%	-60.5%	-46.2%	-23.9%	-3.0%
FY 21-22	71.4%	78.6%	211.1%	200.0%	128.6%	86.3%	1.1%
FY 22-23	12.4%	19.2%	62.5%	28.6%	68.8%	18.8%	4.5%
FY 23-24	5.1%	-14.9%	-1.1%	6.3%	25.9%	0.1%	4.3%

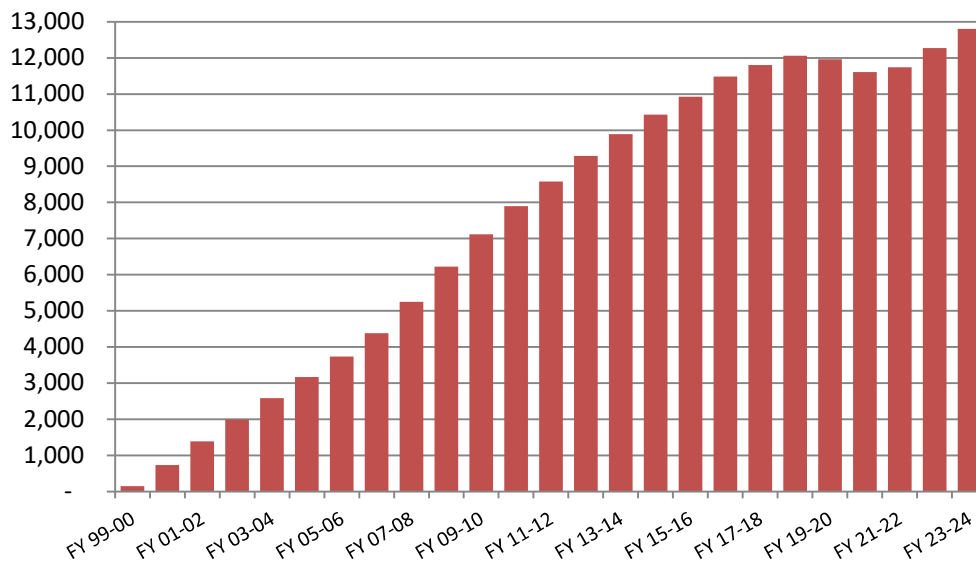
Source: Florida Department of Corrections, Bureau of Research and Data Analysis, July 17, 2024.

These numbers may differ from those reported previously due to a change by the Department of Corrections in the methodology used to report admissions

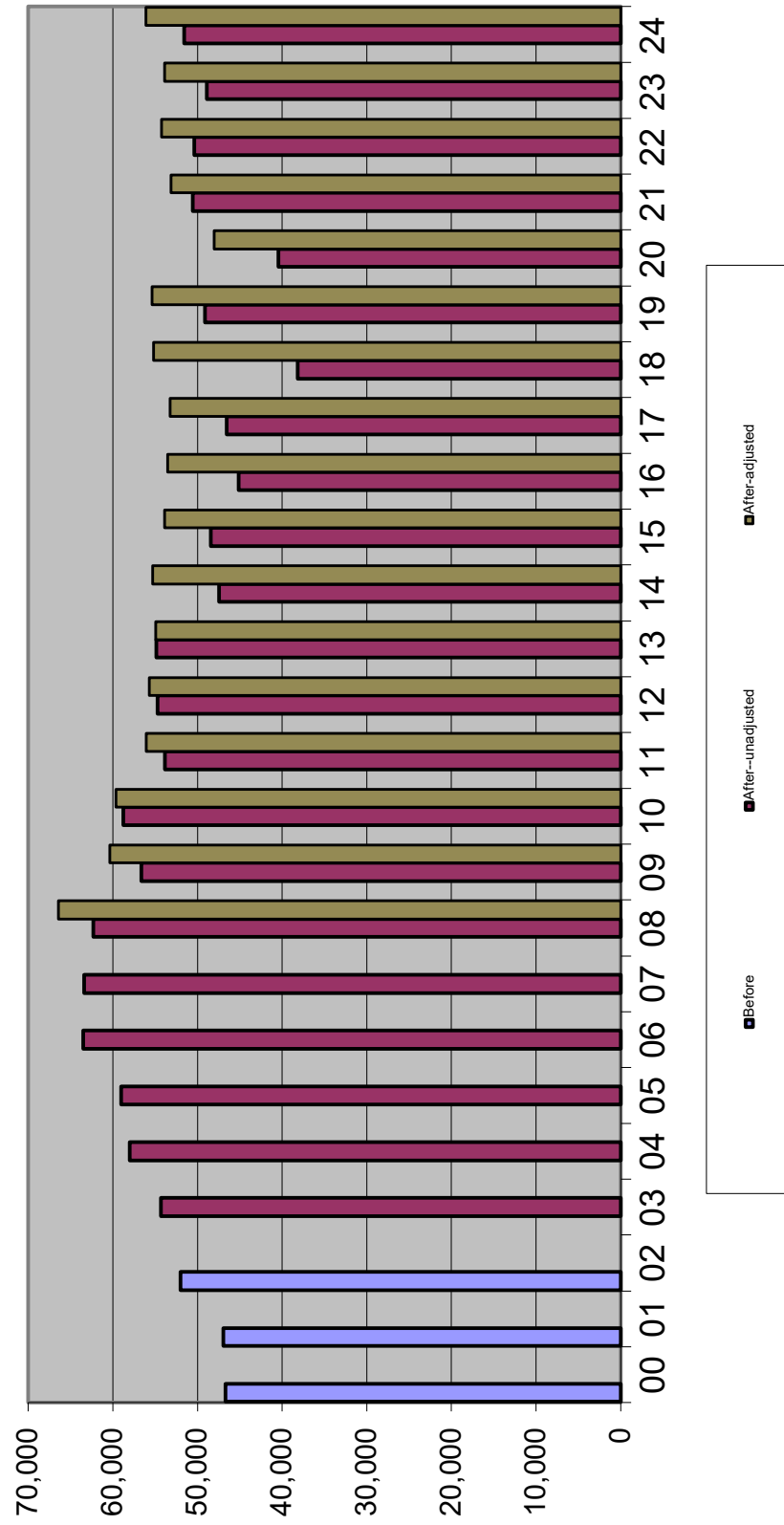
## 10-20-Life Admissions



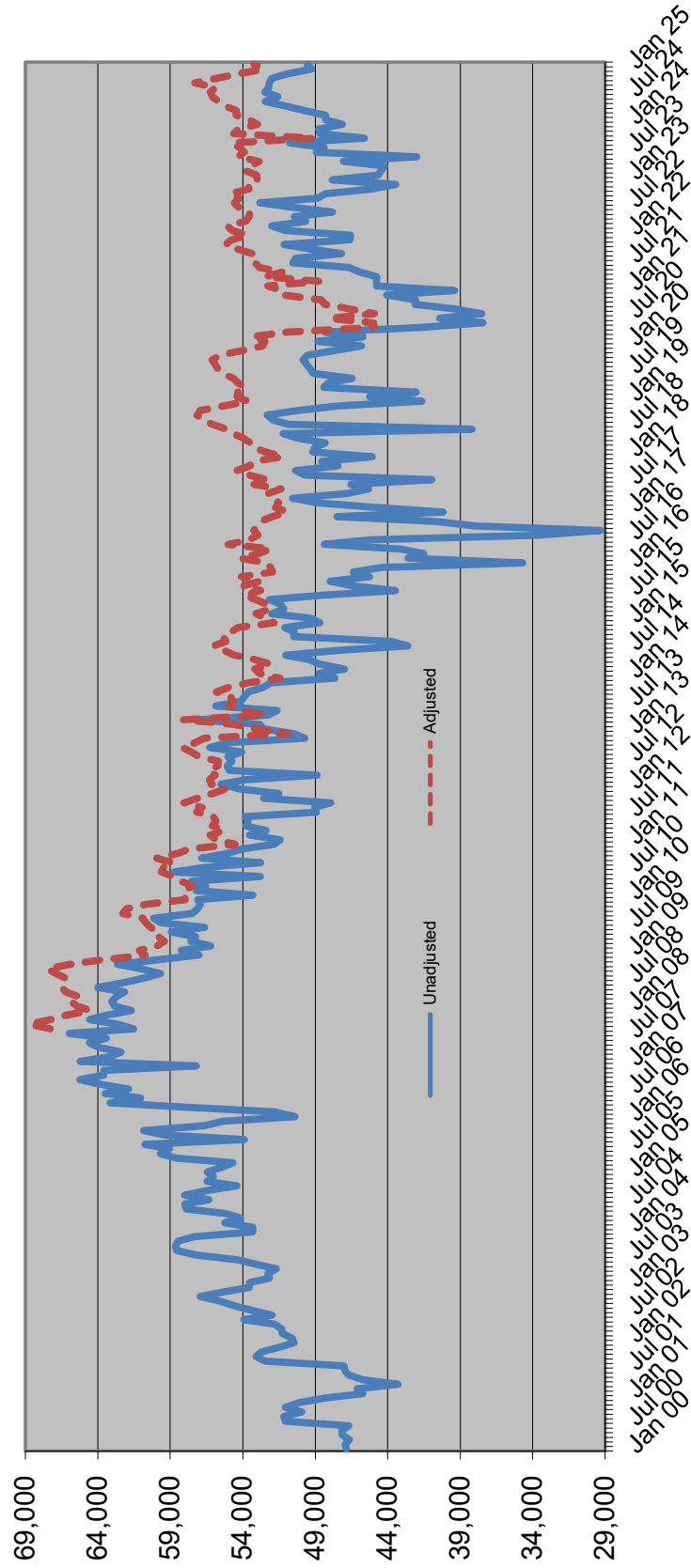
## 10-20-Life June 30th Population



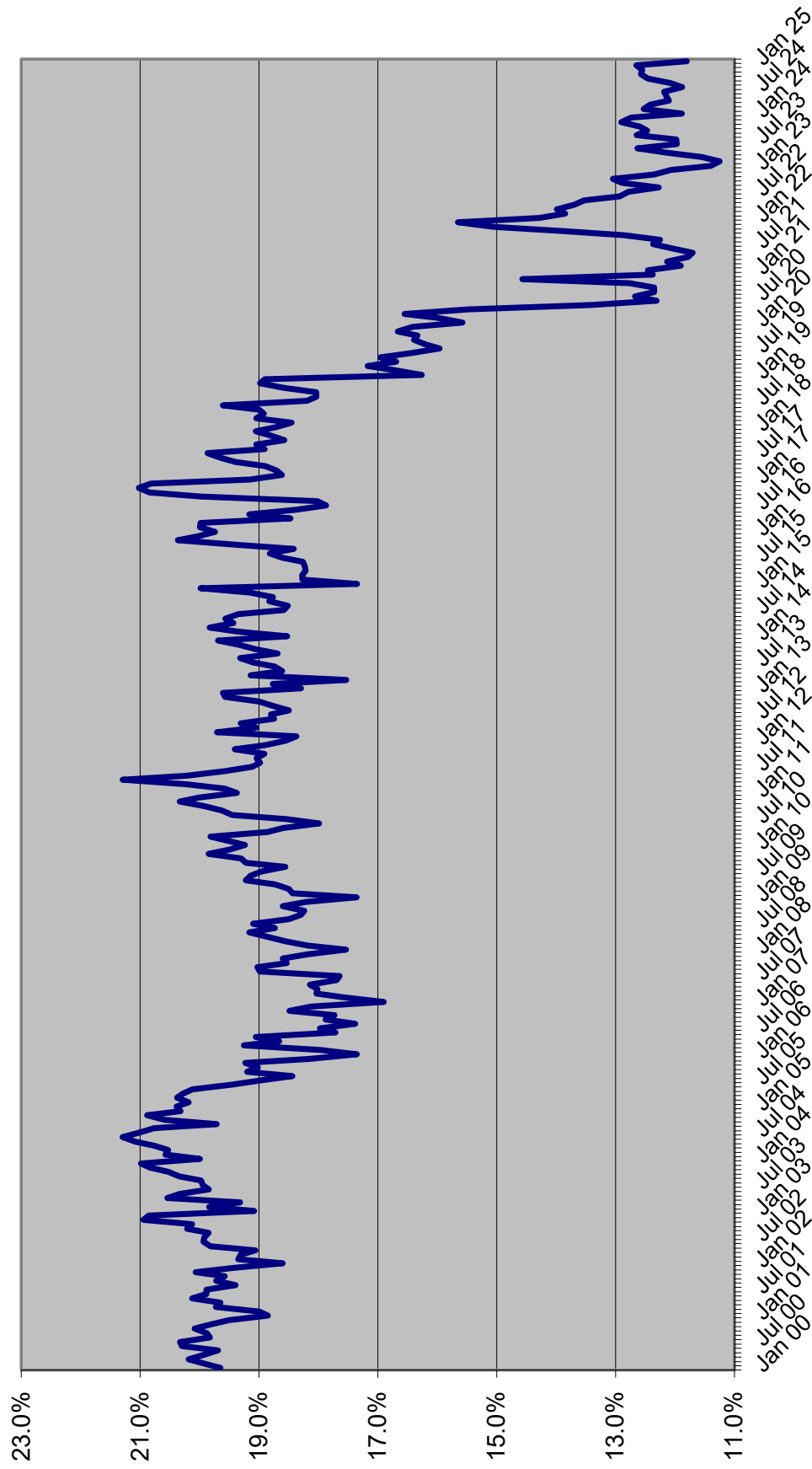
## June County Jail Average Daily Population Before and After Zero Tolerance



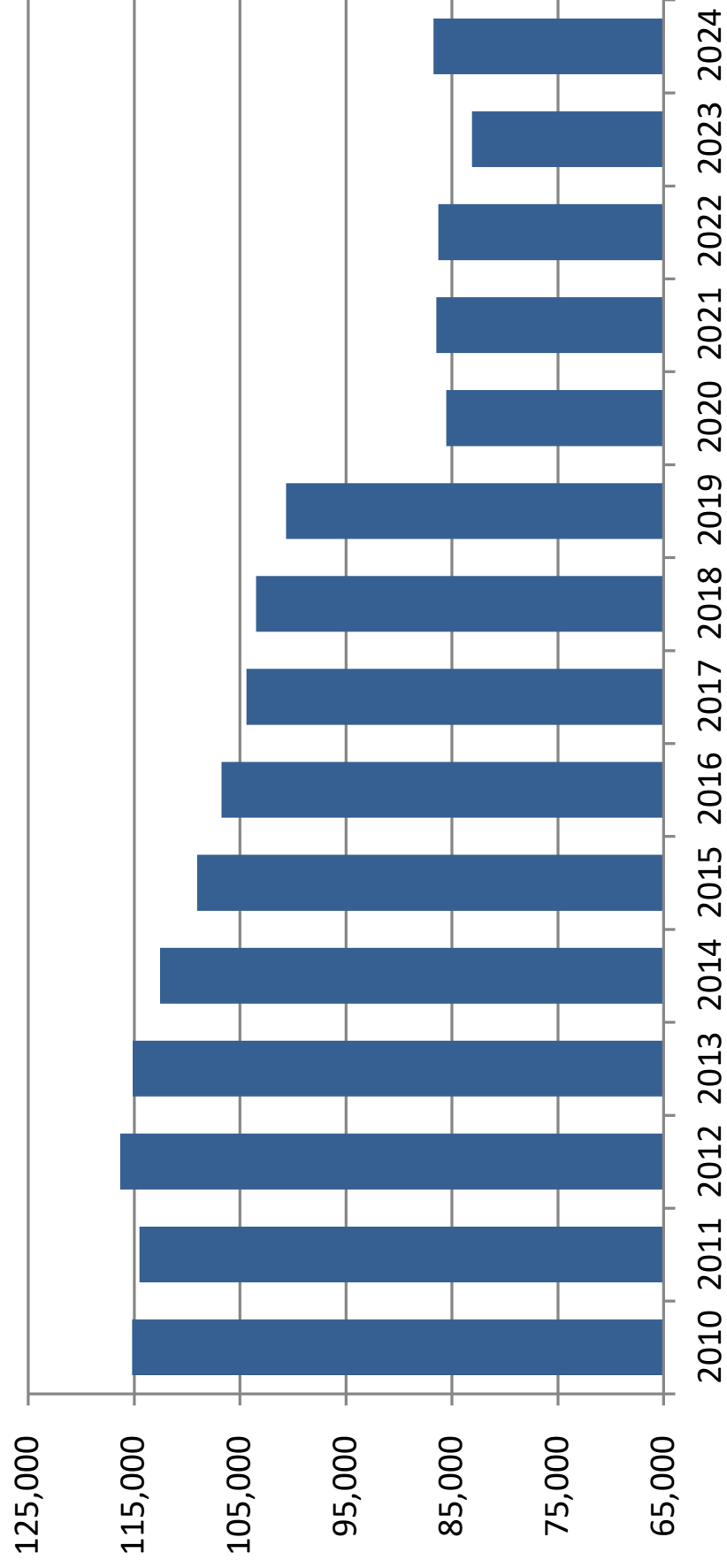
## Average Daily Population in County Jails



## Sentenced Felons in County Jails as % of Total Jail Population



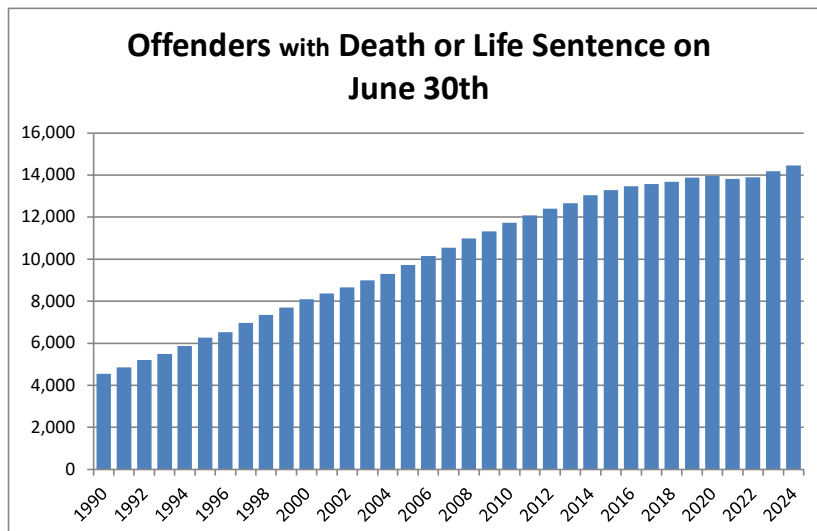
## Offenders on Active Supervision December 31st



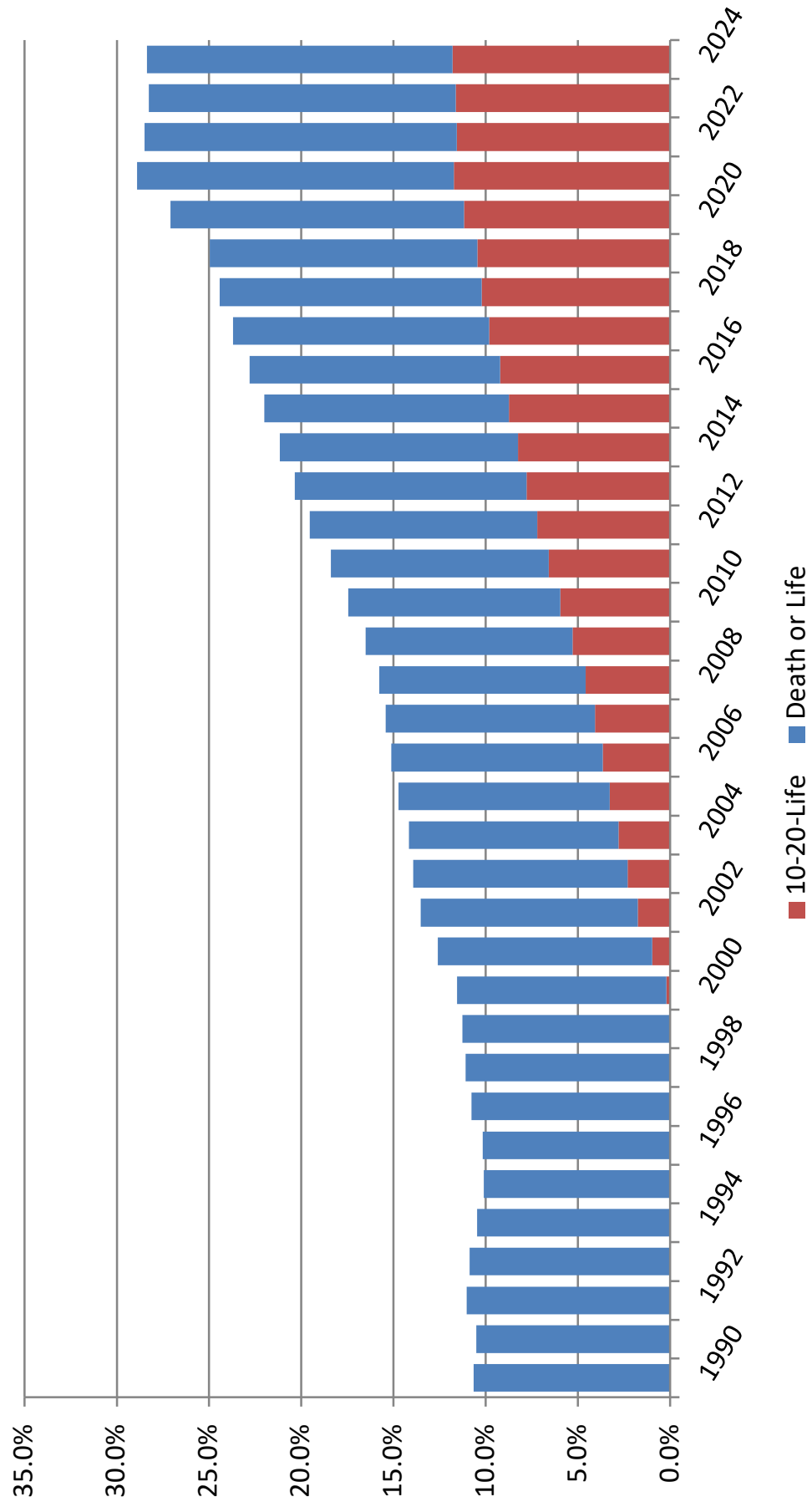


## OFFENDERS WITH LIFE OR DEATH SENTENCES ON JUNE 30

June 30	Total population	Offenders with life or death sentence	Change	Percent change	Percent with death or life sentence
1990	42,733	4,549	344	8.2%	10.6%
1991	46,233	4,851	302	6.6%	10.5%
1992	47,052	5,196	345	7.1%	11.0%
1993	50,603	5,499	303	5.8%	10.9%
1994	56,052	5,869	370	6.7%	10.5%
1995	61,992	6,262	393	6.7%	10.1%
1996	64,333	6,534	272	4.3%	10.2%
1997	64,713	6,969	435	6.7%	10.8%
1998	66,280	7,355	386	5.5%	11.1%
1999	68,382	7,699	344	4.7%	11.3%
2000	71,233	8,092	393	5.1%	11.4%
2001	72,006	8,367	275	3.4%	11.6%
2002	73,553	8,659	292	3.5%	11.8%
2003	77,310	8,991	332	3.8%	11.6%
2004	81,968	9,298	307	3.4%	11.3%
2005	84,895	9,719	421	4.5%	11.4%
2006	88,575	10,152	433	4.5%	11.5%
2007	92,838	10,542	390	3.8%	11.4%
2008	98,192	10,982	440	4.2%	11.2%
2009	100,894	11,320	338	3.1%	11.2%
2010	102,232	11,737	417	3.7%	11.5%
2011	102,319	12,078	341	2.9%	11.8%
2012	100,527	12,398	320	2.6%	12.3%
2013	100,884	12,667	269	2.2%	12.6%
2014	100,942	13,046	379	3.0%	12.9%
2015	100,050	13,284	238	1.8%	13.3%
2016	99,119	13,466	182	1.4%	13.6%
2017	97,794	13,579	113	0.8%	13.9%
2018	96,253	13,681	102	0.8%	14.2%
2019	95,626	13,877	196	1.4%	14.5%
2020	87,736	13,951	74	0.5%	15.9%
2021	80,495	13,819	-132	-0.9%	17.2%
2022	82,124	13,889	70	0.5%	16.9%
2023	85,174	14,174	285	2.1%	16.6%
2024	87,303	14,459	285	2.0%	16.6%



# Percent of Offenders with Death or Life Sentence or 10-20-Life Sentence on June 30th



## PRISON ADMISSIONS AND POPULATION BY FISCAL YEAR

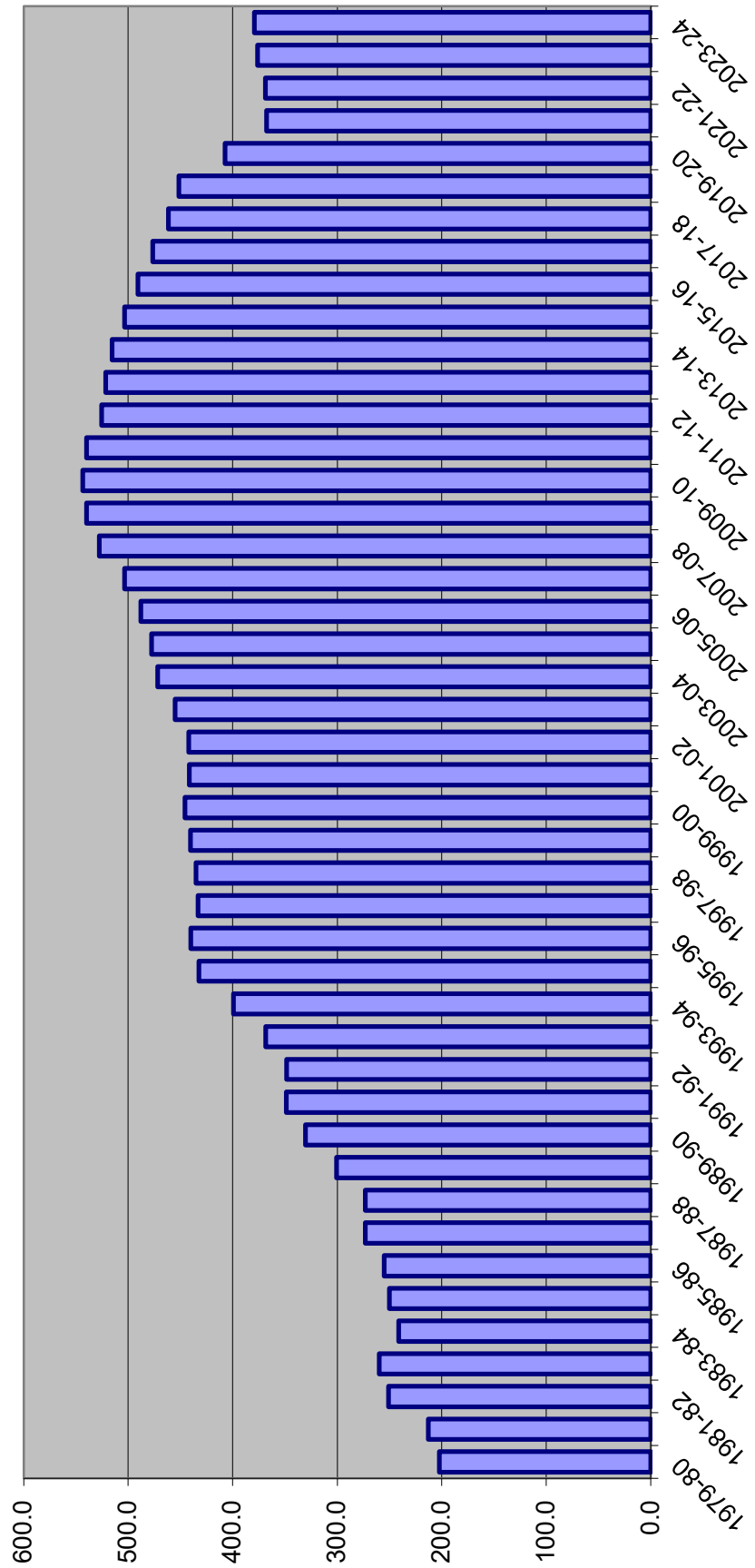
FISCAL YEAR	TOTAL PRISON ADMISSIONS	PERCENT CHANGE	PRISON POP ON JUNE 30	PERCENT CHANGE	RATIO OF ADMITS TO POP	INMATES PER 100,000 OF FL.'S POP
1978-79	8,292	3.6%	20,078	1.0%	0.41	212.5
1979-80	9,546	15.1%	19,722	-1.8%	0.48	202.3
1980-81	11,096	16.2%	21,579	9.4%	0.51	212.8
1981-82	13,621	22.8%	26,161	21.2%	0.52	250.8
1982-83	14,301	5.0%	27,717	5.9%	0.52	259.6
1983-84	12,516	-12.5%	26,471	-4.5%	0.47	241.0
1984-85	14,393	15.0%	28,310	6.9%	0.51	250.0
1985-86	17,154	19.2%	29,712	5.0%	0.58	254.9
1986-87	23,048	34.4%	32,764	10.3%	0.70	273.0
1987-88	30,454	32.1%	33,681	2.8%	0.90	273.2
1988-89	39,569	29.9%	38,059	13.0%	1.04	300.8
1989-90	43,639	10.3%	42,733	12.3%	1.02	330.3
1990-91	36,752	-15.8%	46,233	8.2%	0.79	348.7
1991-92	35,436	-3.6%	47,012	1.7%	0.75	348.3
1992-93	33,217	-6.3%	50,603	7.6%	0.66	368.6
1993-94	30,295	-8.8%	56,052	10.8%	0.54	399.1
1994-95	26,751	-11.7%	61,992	10.6%	0.43	432.4
1995-96	23,893	-10.7%	64,333	3.8%	0.37	439.9
1996-97	23,789	-0.4%	64,713	0.6%	0.37	433.2
1997-98	24,318	2.2%	66,280	2.4%	0.37	435.2
1998-99	25,147	3.4%	68,599	3.5%	0.37	440.3
1999-00	27,126	7.9%	71,233	3.8%	0.38	445.7
2000-01	27,217	0.3%	72,007	1.1%	0.38	441.6
2001-02	27,564	1.3%	73,553	2.1%	0.37	442.2
2002-03	30,287	9.9%	77,316	5.1%	0.39	455.3
2003-04	33,615	11.0%	81,974	6.0%	0.41	471.8
2004-05	34,129	1.5%	84,901	3.6%	0.40	477.6
2005-06	36,722	7.6%	88,576	4.3%	0.41	487.9
2006-07	39,300	7.0%	92,844	4.8%	0.42	503.3
2007-08	42,279	7.6%	98,192	5.8%	0.43	527.5
2008-09	40,050	-5.3%	100,894	2.8%	0.40	539.9
2009-10	37,794	-5.6%	102,232	1.3%	0.37	543.7
2010-11	35,627	-5.7%	102,319	0.1%	0.35	539.9
2011-12	32,508	-8.8%	100,527	-1.8%	0.32	525.4
2012-13	33,516	3.1%	100,884	0.4%	0.33	521.7
2013-14	32,822	-2.1%	100,942	0.1%	0.33	515.4
2014-15	31,592	-3.7%	100,050	-0.9%	0.32	503.3
2015-16	31,038	-1.8%	99,119	-0.9%	0.31	490.7
2016-17	29,432	-5.2%	97,794	-1.3%	0.30	476.5
2017-18	28,538	-3.0%	96,253	-1.6%	0.30	461.5
2018-19	29,216	2.4%	95,626	-0.7%	0.31	451.3
2019-20	21,644	-25.9%	87,736	-8.3%	0.25	407.4
2020-21	18,810	-13.1%	80,495	-8.3%	0.23	367.6
2021-22	25,905	37.7%	82,124	2.0%	0.32	368.7
2022-23	27,870	7.6%	85,174	3.7%	0.33	376.3
2023-24	27,809	-0.2%	87,303	2.5%	0.32	379.3

Data Sources: Total Admissions and June 30 Prison Population: Florida Department of Corrections, various publications and website.

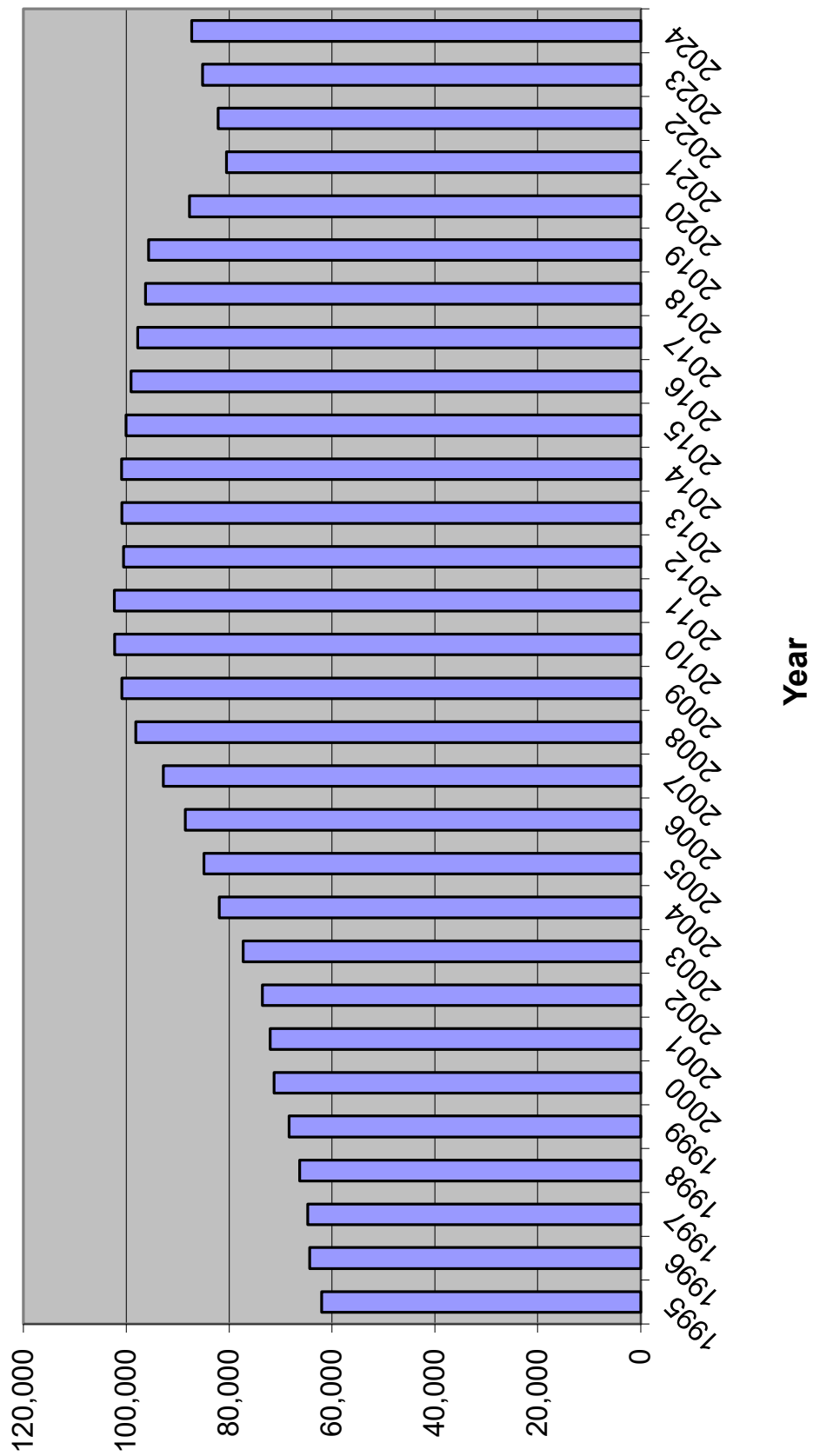
April 1 population numbers used to calculate the inmates per 100,000 Florida population are from the Florida Demographic Estimating Conference held February 6, 2025.

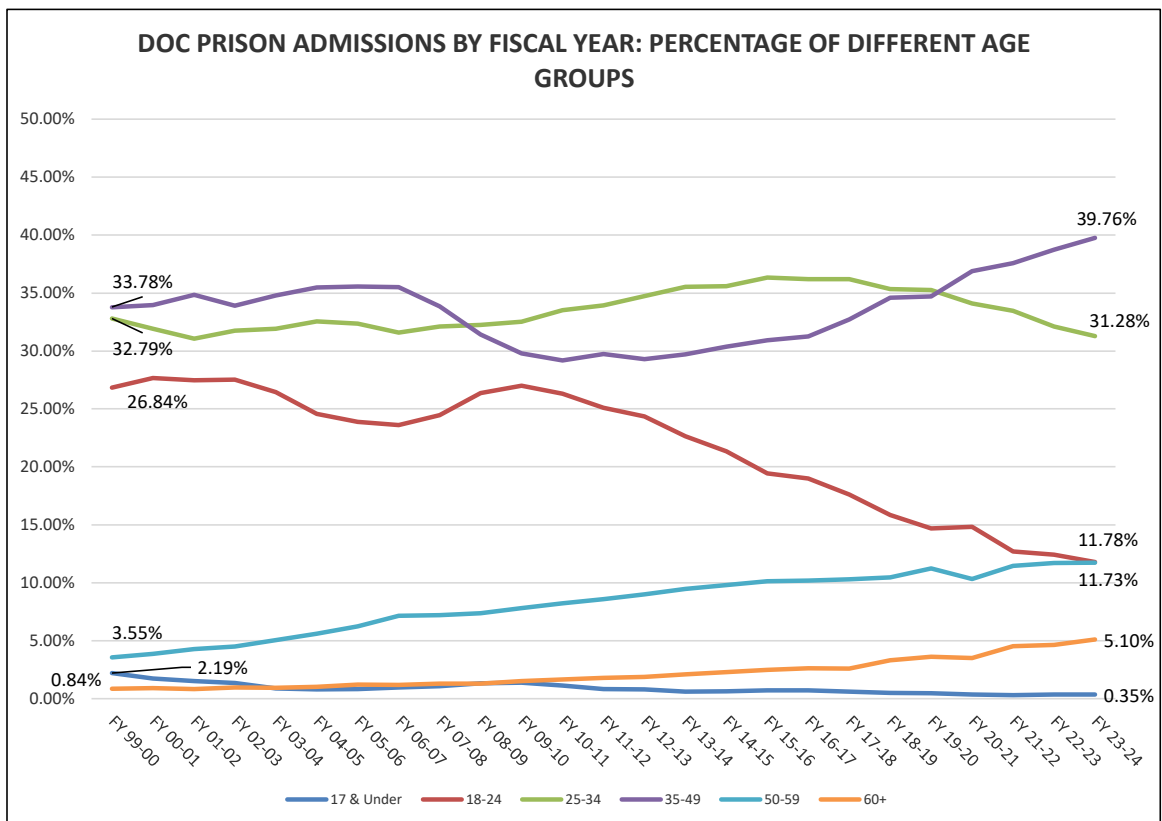
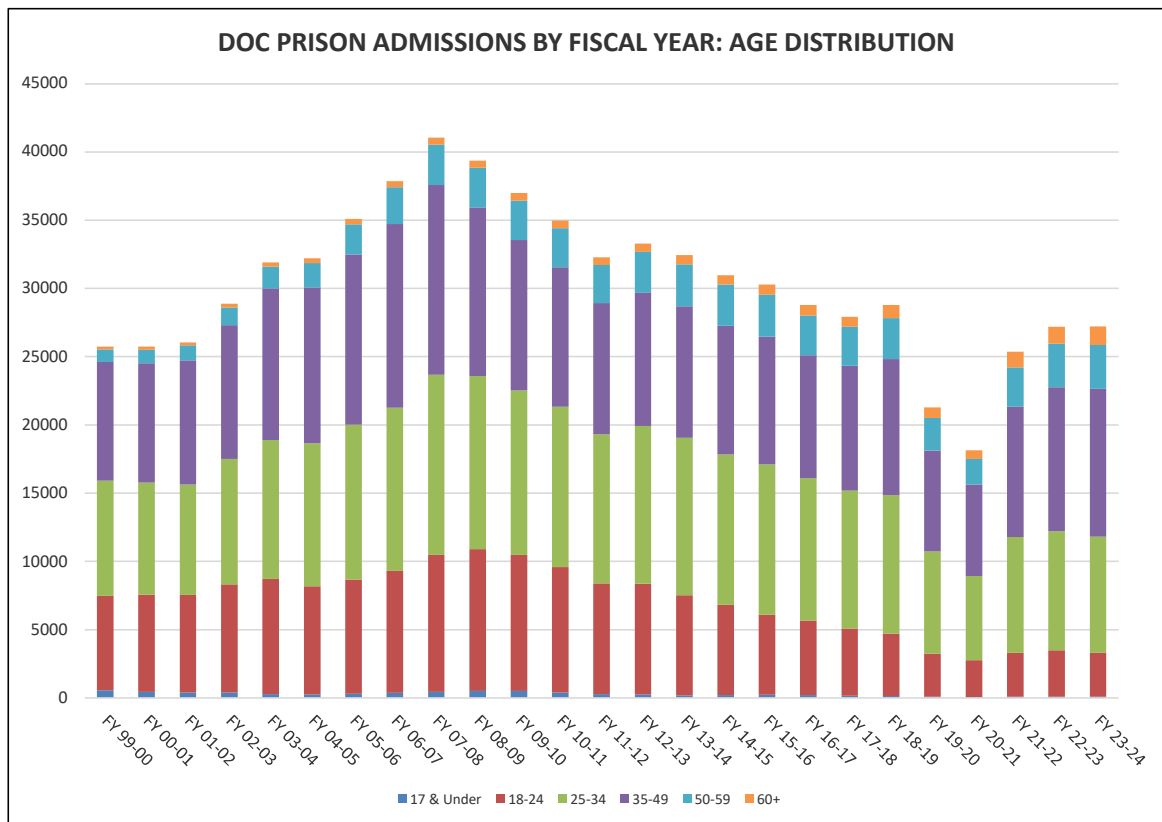
Note: Total admissions include new commitments, control releasees with and without new sentences, and conditional releasees with and without new sentences.

## INMATES PER 100,000 FLORIDA RESIDENTS



## DOC STATUS POPULATION: JUNE 30





Fiscal Year 23-24 Prison Admissions: Top Five Offenses by Age Group		
Ages 17 and Under	Ages 18-24	Ages 25-34
Possession of a firearm by a convicted felon 2nd Degree Murder, Dangerous Act Burglary, armed with explosive or weapon Robbery with firearm or deadly weapon Aggravated battery with deadly weapon	Possession of a firearm by a convicted felon Robbery with firearm or deadly weapon 2nd Degree Murder, Dangerous Act Burglary of an unoccupied structure Burglary of a dwelling	Possession of a firearm by a convicted felon Burglary of a dwelling Burglary of an unoccupied structure Possess methamphetamine Robbery with firearm or deadly weapon
Ages 35-49	Ages 50-59	Ages 60+
Possession of a firearm by a convicted felon Possess methamphetamine Burglary of a dwelling Possess controlled substance (other) Burglary of an unoccupied structure	Possess methamphetamine Possession of a firearm by a convicted felon Burglary of a dwelling Cocaine possession Burglary of an unoccupied structure	Sex offender failure to register Cocaine possession Petit theft/3rd conviction Burglary of an unoccupied structure Possession of a firearm by a convicted felon

Youngest admission: 15 years  
 Oldest admission: 94 years

