

**WORKPAPERS OF THE  
CRIMINAL JUSTICE ESTIMATING CONFERENCE**



**HELD December 23, 2025**

(Web Site: <http://edr.state.fl.us>)



## Table of Contents

FY 25-26 over FY 24-25 New Commitments and Year-and-a-day sentences.....	1
Detail -- FY 24-25 Actuals .....	2
Proposed Forecast of Conditional and Control Release Violator Admissions .....	3
Sentence Length Distributions Underlying Current and Prior CJECs .....	4
Percentage of Monthly New Commitment Cohort Released from Prison .....	5
New Commitments Still in Prison after X Months (graph).....	6
Growth Rate Summary--Current and Projected Forecasts.....	7
Comparison of Forecasts of Prison Admissions and Population with Current Forecast.....	9
EDR Fiscal Year Forecast .....	13
EDR Monthly Forecast .....	14
FEA Fiscal Year Forecast .....	20
FEA Monthly Forecast .....	21
Sexually Violent Predator Program Forecast .....	27
DOC Supervised Population History and Forecast.....	28
Monitoring Reports from Current and Prior CJEC Forecasts .....	31



**NEW COMMITMENTS  
CHANGE FROM PRIOR YEAR**

**YEAR-AND-A-DAY NEW COMMITMENTS  
CHANGE FROM PRIOR YEAR**

Jul 2024	2,368	Jul 2024	177
Jul 2025	2,362	Jul 2025	158
Change	-0.3%	Change	-10.7%
Jul-Aug 2024	4,579	Jul-Aug 2024	337
Jul-Aug 2025	4,408	Jul-Aug 2025	325
Change	-3.7%	Change	-3.6%
Jul-Sep 2024	6,403	Jul-Sep 2024	483
Jul-Sep 2025	6,812	Jul-Sep 2025	483
Change	6.4%	Change	0.0%
Jul-Oct 2024	8,923	Jul-Oct 2024	671
Jul-Oct 2025	9,113	Jul-Oct 2025	625
Change	2.1%	Change	-6.9%
Jul-Nov 2024	10,880	Jul-Nov 2024	820
Jul-Nov 2025	10,847	Jul-Nov 2025	758
Change	-0.3%	Change	-7.6%

Quarterly year over year change

FY 22-23 to FY 23-24

Jul - Sep	-2.3%
Oct - Dec	0.8%
Jan - Mar	3.3%
Apr - Jun	-2.3%

FY 23-24 to FY 24-25

Jul - Sep	-0.3%
Oct - Dec	-0.2%
Jan - Mar	0.1%
Apr - Jun	-0.6%

FY 24-25 to FY 25-26

Jul - Sep	6.4%
-----------	------

Jul 2024	2,368	Jul 2024	177
Jul 2025	2,362	Jul 2025	158
Change	-0.3%	Change	-10.7%
Aug 2024	2,211	Aug 2024	160
Aug 2025	2,046	Aug 2025	167
Change	-7.5%	Change	4.4%
Sep 2024	1,824	Sep 2024	146
Sep 2025	2,404	Sep 2025	158
Change	31.8%	Change	8.2%
Oct 2024	2,520	Oct 2024	188
Oct 2025	2,301	Oct 2025	142
Change	-8.7%	Change	-24.5%
Nov 2024	1,957	Nov 2024	149
Nov 2025	1,734	Nov 2025	133
Change	-11.4%	Change	-10.7%

Source: DOC website; trends report

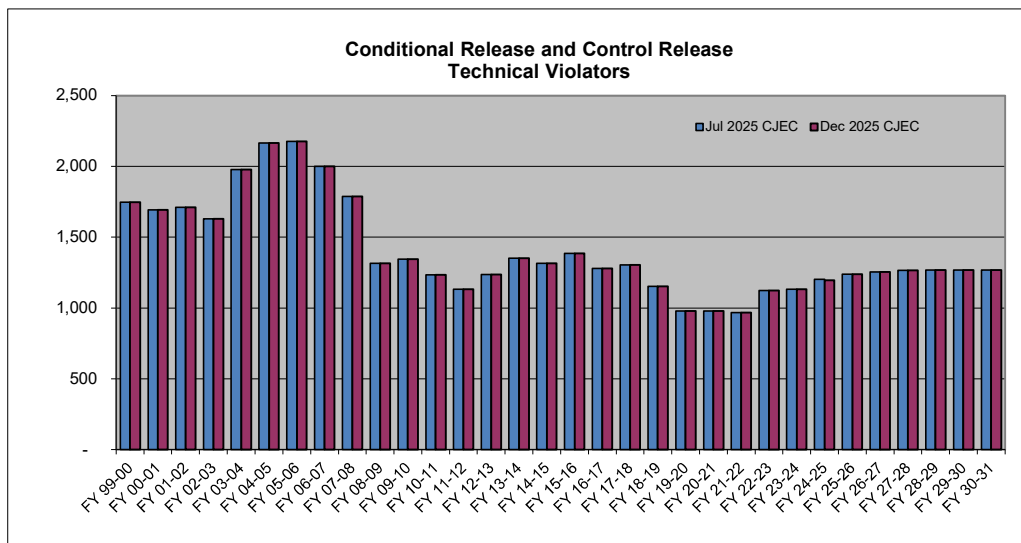
Source: Monthly status file from DOC; adjusted for missing data

**CRIMINAL JUSTICE ESTIMATING CONFERENCE DECEMBER 23, 2025  
PRIOR YEAR ACTUALS**

	JUL 24	AUG 24	SEP 24	OCT 24	NOV 24	DEC 24	JAN 25	FEB 25	MAR 25	APR 25	MAY 25	JUN 25
ADMISSIONS	2,486	2,319	1,892	2,647	2,052	2,062	2,332	2,354	2,519	2,467	2,323	2,349
NEW COMMITMENTS	2,368	2,211	1,824	2,520	1,957	1,973	2,240	2,274	2,426	2,345	2,219	2,249
TECHNICAL VIOLATORS	118	108	68	127	95	89	92	80	93	122	104	100
CONTROL RELEASE	-	-	-	-	-	-	-	-	-	-	-	-
CONDITIONAL RELEASE	118	108	68	127	95	89	92	80	93	122	104	100
LOSSES	2,105	2,261	2,072	2,235	2,053	2,127	2,262	2,074	2,278	2,151	2,230	2,170
PAROLES	NA	NA	NA	NA	NA	NA	NA	NA	NA	NA	NA	NA
FROM NEW TECH. VIOLATORS	NA	NA	NA	NA	NA	NA	NA	NA	NA	NA	NA	NA
END OF SENTENCE	NA	NA	NA	NA	NA	NA	NA	NA	NA	NA	NA	NA
FROM STATUS POP	NA	NA	NA	NA	NA	NA	NA	NA	NA	NA	NA	NA
FROM NEW COMMITMENTS	NA	NA	NA	NA	NA	NA	NA	NA	NA	NA	NA	NA
END OF MONTH POPULATION	87,684	87,742	87,562	87,974	87,973	87,908	87,978	88,258	88,499	88,815	88,908	89,087

## Conditional and Control Release Technical Violator Admissions

	Control Release Technical Violators	Conditional Release Technical Violators	Total as calculated	Total	Change	% change
FY 99-00	87	1,660	1,747.00	1,747		
FY 00-01	62	1,630	1,692.00	1,692	(55)	-3.3%
FY 01-02	41	1,669	1,710.00	1,710	18	1.1%
FY 02-03	17	1,612	1,629.00	1,629	(81)	-4.9%
FY 03-04	23	1,954	1,977.00	1,977	348	21.6%
FY 04-05	24	2,141	2,165.00	2,165	188	9.6%
FY 05-06	23	2,153	2,176.00	2,176	11	0.5%
FY 06-07	8	1,993	2,001.00	2,001	(175)	-8.1%
FY 07-08	10	1,778	1,788.00	1,788	(213)	-10.7%
FY 08-09	5	1,310	1,315.00	1,315	(473)	-26.6%
FY 09-10	3	1,341	1,344.00	1,344	29	2.2%
FY 10-11	2	1,231	1,233.00	1,233	(111)	-8.3%
FY 11-12	3	1,129	1,132.00	1,132	(101)	-8.2%
FY 12-13	2	1,235	1,237.00	1,237	105	9.3%
FY 13-14	3	1,347	1,350.00	1,350	113	9.1%
FY 14-15	3	1,311	1,314.00	1,314	(36)	-2.7%
FY 15-16	2	1,384	1,386.00	1,386	72	5.5%
FY 16-17	1	1,277	1,278.00	1,278	(108)	-7.8%
FY 17-18	2	1,301	1,303.00	1,303	25	2.0%
FY 18-19	0	1,152	1,152.00	1,152	(151)	-11.6%
FY 19-20	0	980	980.00	980	(172)	-14.9%
FY 20-21	0	980	980.00	980	-	0.0%
FY 21-22	0	966	966.00	966	(14)	-1.4%
FY 22-23	0	1,123	1,123.00	1,123	157	16.3%
FY 23-24	0	1,132	1,132.00	1,132	9	0.8%
FY 24-25	0	1,196	1,196.00	1,196	64	5.7%
FY 25-26	0	1,239	1,239.00	1,239	43	3.6%
FY 26-27	0	1,255	1,255.00	1,255	16	1.3%
FY 27-28	0	1,264	1,264.00	1,264	9	0.7%
FY 28-29	0	1,268	1,268.00	1,268	4	0.3%
FY 29-30	0	1,268	1,268.00	1,268	-	0.0%
FY 30-31	0	1,268	1,268.00	1,268	-	0.0%



**SENTENCE LENGTH DISTRIBUTION**

Sentence Length	7/28/2023 CJEC		12/15/2023 CJEC		7/31/2024 CJEC		2/21/2025 CJEC		7/30/2025 CJEC		12/23/2025 CJEC	
	Percent	Cumulative Percent	Percent	Cumulative Percent	Percent	Cumulative Percent	Percent	Cumulative Percent	Percent	Cumulative Percent	Percent	Cumulative Percent
12 - 15 months	17.6%	17.6%	15.0%	15.0%	15.6%	15.6%	15.6%	15.6%	15.3%	15.3%	15.1%	15.1%
15.1 - 21 months	15.3%	32.9%	13.2%	28.3%	13.4%	28.9%	13.4%	29.0%	12.8%	28.1%	12.2%	27.3%
21.1 - 27 months	12.8%	45.6%	12.0%	40.3%	11.8%	40.7%	11.4%	40.4%	12.0%	40.1%	12.0%	39.3%
27.1 - 33 months	6.4%	52.1%	5.3%	45.5%	5.5%	46.2%	5.7%	46.1%	5.6%	45.7%	5.4%	44.7%
33.1 - 39 months	11.2%	63.2%	12.7%	58.2%	12.4%	58.5%	12.3%	58.5%	12.3%	57.9%	12.4%	57.1%
39.1 - 45 months	3.4%	66.6%	3.1%	61.3%	3.3%	61.8%	3.4%	61.9%	3.1%	61.1%	3.2%	60.3%
45.1 - 51 months	5.5%	72.1%	5.6%	66.8%	5.3%	67.0%	5.2%	67.1%	5.3%	66.4%	5.2%	65.5%
51.1 - 57 months	1.1%	73.2%	1.3%	68.2%	1.1%	68.1%	1.4%	68.5%	1.4%	67.8%	1.4%	66.8%
57.1 - 78 months	9.6%	82.8%	10.0%	78.2%	10.5%	78.6%	9.8%	78.2%	10.3%	78.1%	10.5%	77.3%
78.1 - 102 months	4.2%	87.0%	5.1%	83.3%	5.1%	83.8%	5.1%	83.3%	5.5%	83.6%	5.7%	83.0%
GT 102 months	13.0%	100.0%	16.7%	100.0%	16.2%	100.0%	16.7%	100.0%	16.4%	100.0%	17.0%	100.0%
	100.0%		100.0%		100.0%		100.0%		100.0%		100.0%	
7/28/2023 CJEC	New commitments 9/1/2019 through 2/29/2020 (6 months)											
12/15/2023 CJEC	New commitments 6/1/2023 through 11/30/2023 (6 months)											
7/31/2024 CJEC	New commitments 1/1/2024 through 6/30/2024 (6 months)											
2/21/2025 CJEC	New commitments 8/1/2024 through 1/31/2025 (6 months)											
7/30/2025 CJEC	New commitments 1/1/2025 through 6/30/2025 (6 months)											
12/23/2025 CJEC	New commitments 6/1/2025 through 11/30/2025 (6 months)											

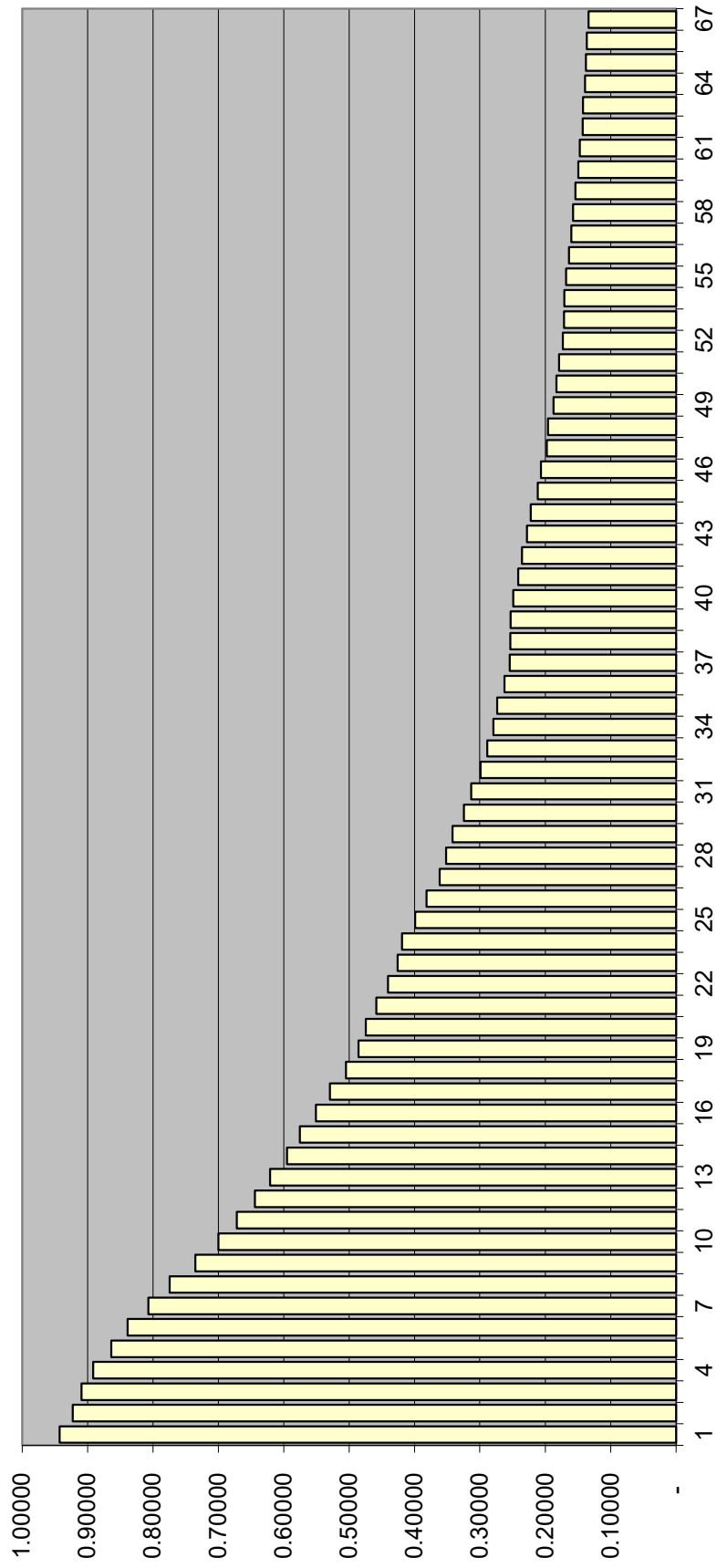
Prepared 12/12/2025

## CJEC Releases from New Commitments

Percentage of Monthly New Commitment Cohort Released from Prison at the end of x months

	July 31, 2024 CJEC	February 21, 2025 CJEC	July 30, 2025 CJEC	December 23, 2025 CJEC
6 months	16.5%	15.5%	15.2%	16.1%
12 months	37.4%	36.4%	35.9%	35.6%
18 months	51.5%	50.1%	49.6%	49.5%
24 months	61.9%	60.3%	59.1%	58.1%
48 months	80.4%	80.4%	80.4%	80.4%
54 months	82.9%	82.9%	82.9%	82.9%
60 months	85.0%	85.0%	85.0%	85.0%

**New Commitments Still in Prison after X Months--Release Vector Used in 12/23/2025 CJEC**



**Criminal Justice Estimating Conference--  
December 23, 2025  
GROWTH RATES SUMMARY**

**TOTAL ADMISSIONS**

	Current CJEC-- July 30, 2025	EDR	FEA	Adopted Forecast (EDR)
<b>FY 22-23</b>	<b>7.6%</b>	<b>7.6%</b>	<b>7.6%</b>	<b>7.6%</b>
<b>FY 23-24</b>	<b>-0.2%</b>	<b>-0.2%</b>	<b>-0.2%</b>	<b>-0.2%</b>
<b>FY 24-25</b>	<b>0.0%</b>	<b>0.0%</b>	<b>0.0%</b>	<b>0.0%</b>
FY 25-26	0.9%	1.1%	0.1%	1.1%
FY 26-27	1.6%	1.5%	2.7%	1.5%
FY 27-28	0.3%	0.3%	0.4%	0.3%
FY 28-29	0.2%	0.2%	0.2%	0.2%
FY 29-30	-1.4%	-1.4%	-1.4%	-1.4%
FY 30-31	0.1%	0.1%	0.1%	0.1%

**NEW COMMITMENTS**

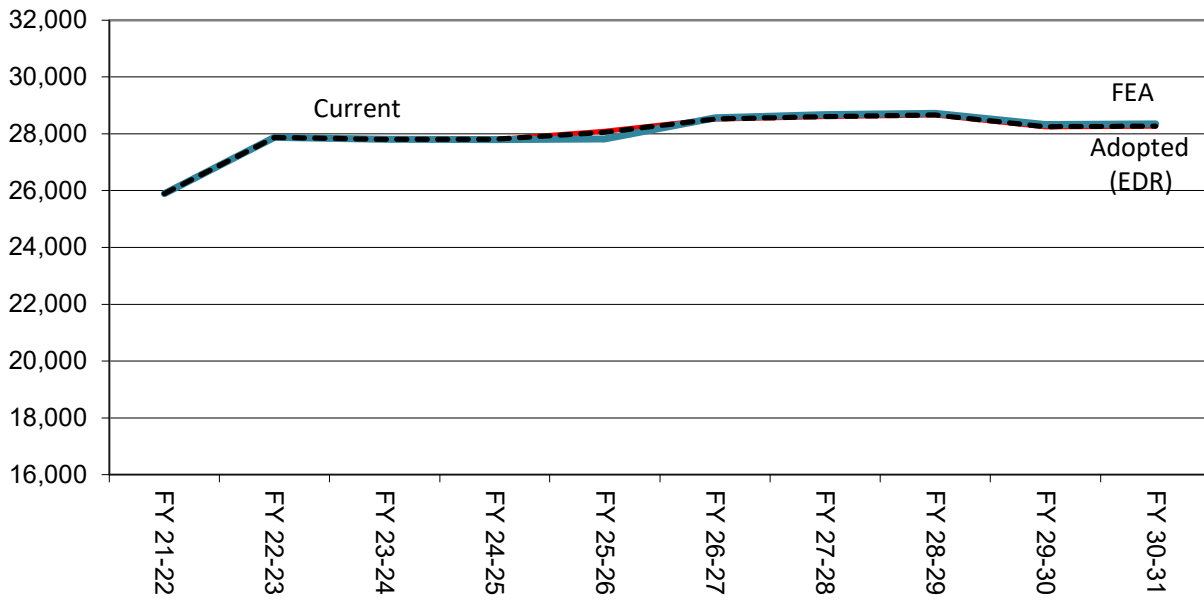
	Current CJEC-- July 30, 2025	EDR	FEA	Adopted Forecast (EDR)
<b>FY 22-23</b>	<b>7.3%</b>	<b>7.3%</b>	<b>7.3%</b>	<b>7.3%</b>
<b>FY 23-24</b>	<b>-0.3%</b>	<b>-0.3%</b>	<b>-0.3%</b>	<b>-0.3%</b>
<b>FY 24-25</b>	<b>-0.3%</b>	<b>-0.3%</b>	<b>-0.3%</b>	<b>-0.3%</b>
FY 25-26	0.8%	0.9%	-0.1%	0.9%
FY 26-27	1.7%	1.5%	2.8%	1.5%
FY 27-28	0.3%	0.3%	0.3%	0.3%
FY 28-29	0.2%	0.2%	0.2%	0.2%
FY 29-30	-1.5%	-1.5%	-1.5%	-1.5%
FY 30-31	0.1%	0.1%	0.1%	0.1%

**POPULATION JUNE 30**

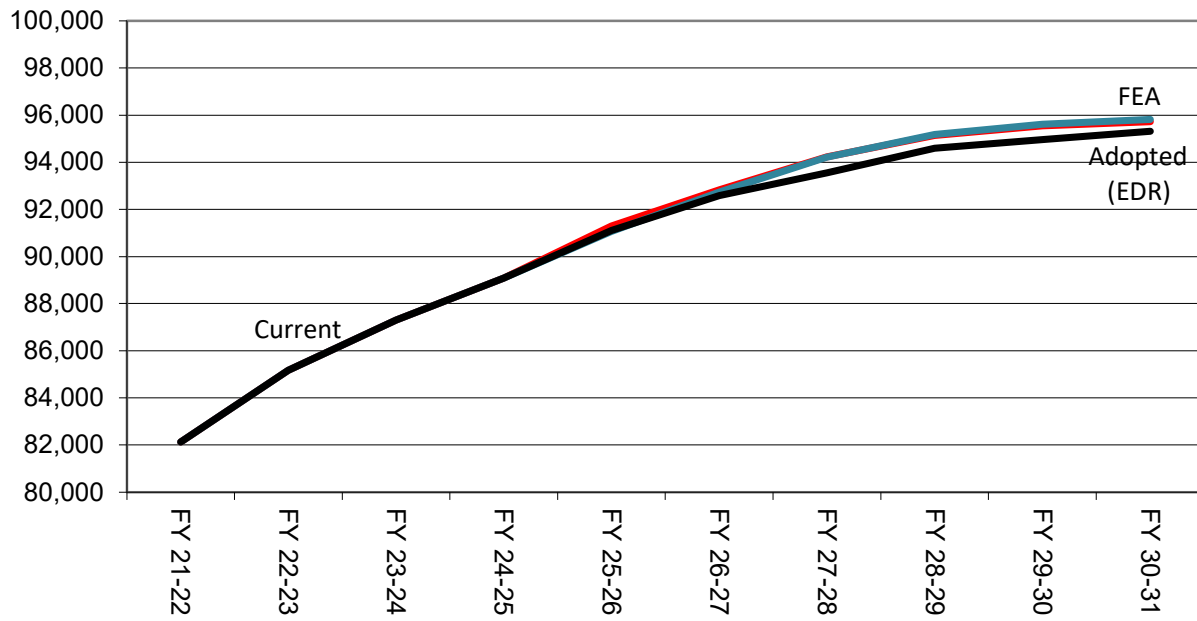
	Current CJEC-- July 30, 2025	EDR	FEA	Adopted Forecast (EDR)
<b>FY 22-23</b>	<b>3.7%</b>	<b>3.7%</b>	<b>3.7%</b>	<b>3.7%</b>
<b>FY 23-24</b>	<b>2.5%</b>	<b>2.5%</b>	<b>2.5%</b>	<b>2.5%</b>
<b>FY 24-25</b>	<b>2.0%</b>	<b>2.0%</b>	<b>2.0%</b>	<b>2.0%</b>
FY 25-26	2.3%	2.5%	2.2%	2.5%
FY 26-27	1.6%	1.7%	1.8%	1.7%
FY 27-28	1.0%	1.5%	1.6%	1.5%
FY 28-29	1.1%	1.0%	1.0%	1.0%
FY 29-30	0.4%	0.4%	0.5%	0.4%
FY 30-31	0.4%	0.2%	0.2%	0.2%

**Actuals in bold.**

### Prison Admissions



### June 30th Prison Population



**Criminal Justice Estimating Conference--December 23, 2025  
FORECAST COMPARISON**

**TOTAL ADMISSIONS**

	Current Jul 2025 CJEC	Current with actuals	EDR	EDR Different from Current	FEA	FEA Different from Current	Adopted Forecast (EDR)	Different from Current
FY 21-22	25,897	25,897	25,897	0	25,897	0	25,897	0
FY 22-23	27,870	27,870	27,870	0	27,870	0	27,870	0
FY 23-24	27,805	<b>27,805</b>	27,805	0	27,805	0	27,805	0
FY 24-25	27,809	27,802	27,802	-7	27,802	-7	27,802	-7
FY 25-26	28,059	27,799	28,095	36	27,820	-239	28,095	36
FY 26-27	28,521	28,521	28,521	0	28,570	49	28,521	0
FY 27-28	28,612	28,612	28,612	0	28,670	58	28,612	0
FY 28-29	28,664	28,664	28,664	0	28,725	61	28,664	0
FY 29-30	28,256	28,256	28,256	0	28,326	70	28,256	0
FY 30-31	28,276	28,276	28,276	0	28,350	74	28,276	0

**CHANGE FROM PRIOR YEAR**

	Current	Current with actuals	EDR	FEA	Adopted Forecast (EDR)
FY 22-23	1,973	1,973	1,973	1,973	1,973
FY 23-24	-65	-65	-65	-65	-65
FY 24-25	4	-3	-3	-3	-3
FY 25-26	250	-3	293	18	293
FY 26-27	462	722	426	750	426
FY 27-28	91	91	91	100	91
FY 28-29	52	52	52	55	52
FY 29-30	-408	-408	-408	-399	-408
FY 30-31	20	20	20	24	20

**PERCENTAGE CHANGE FROM PRIOR YEAR**

	Current	Current with actuals	EDR	FEA	Adopted Forecast (EDR)
FY 22-23	7.6%	7.6%	7.6%	7.6%	7.6%
FY 23-24	-0.2%	-0.2%	-0.2%	-0.2%	-0.2%
FY 24-25	0.0%	0.0%	0.0%	0.0%	0.0%
FY 25-26	0.9%	0.0%	1.1%	0.1%	1.1%
FY 26-27	1.6%	2.6%	1.5%	2.7%	1.5%
FY 27-28	0.3%	0.3%	0.3%	0.4%	0.3%
FY 28-29	0.2%	0.2%	0.2%	0.2%	0.2%
FY 29-30	-1.4%	-1.4%	-1.4%	-1.4%	-1.4%
FY 30-31	0.1%	0.1%	0.1%	0.1%	0.1%

Note: Data for FY 21-22, FY 22-23, and FY 23-24 are final.

## NEW COMMITMENTS

	Current Jul 2025 CJEC	Current with actuals	EDR	EDR Different from Current	FEA	FEA Different from Current	Adopted Forecast (EDR)	Different from Current
FY 21-22	24,931	24,931	24,931	0	24,931	0	24,931	0
FY 22-23	26,747	26,747	26,747	0	26,747	0	26,747	0
FY 23-24	26,677	26,677	26,677	0	26,677	0	26,677	0
FY 24-25	26,607	<b>26,606</b>	26,606	-1	26,606	-1	26,606	-1
FY 25-26	26,820	26,581	26,856	36	26,581	-239	26,856	36
FY 26-27	27,266	27,266	27,266	0	27,315	49	27,266	0
FY 27-28	27,348	27,348	27,348	0	27,406	58	27,348	0
FY 28-29	27,396	27,396	27,396	0	27,457	61	27,396	0
FY 29-30	26,988	26,988	26,988	0	27,058	70	26,988	0
FY 30-31	27,008	27,008	27,008	0	27,082	74	27,008	0

## CHANGE FROM PRIOR YEAR

	Current	Current with actuals	EDR	FEA	Adopted Forecast (EDR)
FY 22-23	1,816	1,816	1,816	1,816	1,816
FY 23-24	-70	-70	-70	-70	-70
FY 24-25	-70	-71	-71	-71	-71
FY 25-26	213	-25	250	-25	250
FY 26-27	446	685	410	734	410
FY 27-28	82	82	82	91	82
FY 28-29	48	48	48	51	48
FY 29-30	-408	-408	-408	-399	-408
FY 30-31	20	20	20	24	20

## PERCENTAGE CHANGE FROM PRIOR YEAR

	Current	Current with actuals	EDR	FEA	Adopted Forecast (EDR)
FY 22-23	7.3%	7.3%	7.3%	7.3%	7.3%
FY 23-24	-0.3%	-0.3%	-0.3%	-0.3%	-0.3%
FY 24-25	-0.3%	-0.3%	-0.3%	-0.3%	-0.3%
FY 25-26	0.8%	-0.1%	0.9%	-0.1%	0.9%
FY 26-27	1.7%	2.6%	1.5%	2.8%	1.5%
FY 27-28	0.3%	0.3%	0.3%	0.3%	0.3%
FY 28-29	0.2%	0.2%	0.2%	0.2%	0.2%
FY 29-30	-1.5%	-1.5%	-1.5%	-1.5%	-1.5%
FY 30-31	0.1%	0.1%	0.1%	0.1%	0.1%

Note: Data for FY 21-22, FY 22-23, and FY 23-24 are final.

**CONTROL/CONDITIONAL RELEASE OFFENDERS WITH TECHNICAL VIOLATIONS**

	Current Jul 2025 CJEC	Current with actuals	EDR	Different from Current	FEA	FEA Different from Current	Adopted Forecast (EDR)	Different from Current
FY 21-22	966	966	966	0	966	0	966	0
FY 22-23	1,123	1,123	1,123	0	1,123	0	1,123	0
FY 23-24	1,128	1,128	1,128	0	1,128	0	1,128	0
FY 24-25	1,202	<b>1,196</b>	1,196	-6	1,196	-6	1,196	-6
FY 25-26	1,239	1,218	1,239	0	1,239	0	1,239	0
FY 26-27	1,255	1,255	1,255	0	1,255	0	1,255	0
FY 27-28	1,264	1,264	1,264	0	1,264	0	1,264	0
FY 28-29	1,268	1,268	1,268	0	1,268	0	1,268	0
FY 29-30	1,268	1,268	1,268	0	1,268	0	1,268	0
FY 30-31	1,268	1,268	1,268	0	1,268	0	1,268	0

**CHANGE FROM PRIOR YEAR**

	Current	Current with actuals	EDR	FEA	Adopted Forecast (EDR)
FY 22-23	157	157	157	157	157
FY 23-24	5	5	5	5	5
FY 24-25	74	68	68	68	68
FY 25-26	37	22	43	43	43
FY 26-27	16	37	16	16	16
FY 27-28	9	9	9	9	9
FY 28-29	4	4	4	4	4
FY 29-30	0	0	0	0	0
FY 30-31	0	0	0	0	0

**PERCENTAGE CHANGE FROM PRIOR YEAR**

	Current	Current with actuals	EDR	FEA	Adopted Forecast (EDR)
FY 22-23	16.3%	16.3%	16.3%	16.3%	16.3%
FY 23-24	0.4%	0.4%	0.4%	0.4%	0.4%
FY 24-25	6.6%	6.0%	6.0%	6.0%	6.0%
FY 25-26	3.1%	1.8%	3.6%	3.6%	3.6%
FY 26-27	1.3%	3.0%	1.3%	1.3%	1.3%
FY 27-28	0.7%	0.7%	0.7%	0.7%	0.7%
FY 28-29	0.3%	0.3%	0.3%	0.3%	0.3%
FY 29-30	0.0%	0.0%	0.0%	0.0%	0.0%
FY 30-31	0.0%	0.0%	0.0%	0.0%	0.0%

Note: Data for FY 21-22, FY 22-23, and FY 23-24 are final.

**Criminal Justice Estimating Conference--December 23, 2025  
FORECAST COMPARISON**

**POPULATION JUNE 30**

	Current Jul 2025 CJEC	Current with actuals	EDR	EDR Different from Current	FEA	FEA Different from Current	Adopted Forecast (EDR)	Different from Current
FY 21-22	82,124	82,124	82,124	0	82,124	0	82,124	0
FY 22-23	85,174	85,174	85,174	0	85,174	0	85,174	0
FY 23-24	87,303	87,303	87,303	0	87,303	0	87,303	0
FY 24-25	89,087	<b>89,087</b>	89,087	0	89,087	0	89,087	0
FY 25-26	91,100	<b>90,872</b>	91,289	189	91,067	-33	91,289	189
FY 26-27	92,585	<b>92,357</b>	92,828	243	92,733	148	92,828	243
FY 27-28	93,538	<b>93,310</b>	94,216	678	94,203	665	94,216	678
FY 28-29	94,595	<b>94,367</b>	95,136	541	95,168	573	95,136	541
FY 29-30	94,966	<b>94,738</b>	95,551	585	95,622	656	95,551	585
FY 30-31	95,310	<b>95,082</b>	95,725	415	95,823	513	95,725	415

**POPULATION CHANGE JUNE 30 FROM PRIOR YEAR**

	Current	Current with actuals	EDR	FEA	Adopted Forecast (EDR)
FY 22-23	3,050	3,050	3,050	3,050	3,050
FY 23-24	2,129	2,129	2,129	2,129	2,129
FY 24-25	1,784	1,784	1,784	1,784	1,784
FY 25-26	2,013	1,785	2,202	1,980	2,202
FY 26-27	1,485	1,485	1,539	1,666	1,539
FY 27-28	953	953	1,388	1,470	1,388
FY 28-29	1,057	1,057	920	965	920
FY 29-30	371	371	415	454	415
FY 30-31	344	344	174	201	174

**PERCENTAGE CHANGE JUNE 30 FROM PRIOR YEAR**

	Current	Current with actuals	EDR	FEA	Adopted Forecast (EDR)
FY 22-23	3.7%	3.7%	3.7%	3.7%	3.7%
FY 23-24	2.5%	2.5%	2.5%	2.5%	2.5%
FY 24-25	2.0%	2.0%	2.0%	2.0%	2.0%
FY 25-26	2.3%	2.0%	2.5%	2.2%	2.5%
FY 26-27	1.6%	1.6%	1.7%	1.8%	1.7%
FY 27-28	1.0%	1.0%	1.5%	1.6%	1.5%
FY 28-29	1.1%	1.1%	1.0%	1.0%	1.0%
FY 29-30	0.4%	0.4%	0.4%	0.5%	0.4%
FY 30-31	0.4%	0.4%	0.2%	0.2%	0.2%

Note: FY 21-22, FY 22-23, and FY 23-24 are final.

**CRIMINAL JUSTICE ESTIMATING CONFERENCE DECEMBER 23, 2025  
FISCAL YEAR FORECAST  
EDR**

	FY 24-25 ACTUAL	FY 25-26	FY 26-27	FY 27-28	FY 28-29	FY 29-30	FY 30-31
ADMISSIONS	27,802	28,095	28,521	28,612	28,664	28,256	28,276
NEW COMMITMENTS	26,606	26,856	27,266	27,348	27,396	26,988	27,008
TECHNICAL VIOLATORS	1,196	1,239	1,255	1,264	1,268	1,268	1,268
CONTROL RELEASE	-	-	-	-	-	-	-
CONDITIONAL RELEASE	1,196	1,239	1,255	1,264	1,268	1,268	1,268
LOSSES	26,018	25,893	26,982	27,224	27,744	27,841	28,102
PAROLES	-	16	24	24	24	24	24
FROM NEW TECH. VIOLATORS	-	304	977	1,176	1,266	1,268	1,268
END OF SENTENCE	-	14,801	25,981	26,024	26,454	26,549	26,810
FROM STATUS POP	-	12,924	15,513	9,416	6,238	4,432	3,658
FROM NEW COMMITMENTS	-	1,877	10,468	16,608	20,216	22,117	23,152
END OF MONTH POPULATION	89,087	91,289	92,828	94,216	95,136	95,551	95,725
July 30, 2025 CJEC	89,087	91,100	92,585	93,538	94,595	94,966	95,310
Proposed over/(under) July 30, 2025 CJEC	-	189	243	678	541	585	415
Average Monthly Population (Total Population)	88,199	90,221	91,934	93,496	94,564	95,209	95,521
Average Monthly Population (Public Population)	<b>76,356</b>	<b>78,378</b>	<b>80,091</b>	<b>81,653</b>	<b>82,721</b>	<b>83,366</b>	<b>83,678</b>

**CRIMINAL JUSTICE ESTIMATING CONFERENCE DECEMBER 23, 2025  
DETAILED MONTHLY FORECAST  
EDR**

	JUL 25	AUG 25	SEP 25	OCT 25	NOV 25	DEC 25	JAN 26	FEB 26	MAR 26	APR 26	MAY 26	JUN 26
ADMISSIONS	2,489	2,133	2,507	2,415	1,823	2,304	2,347	2,395	2,522	2,435	2,361	2,364
NEW COMMITMENTS	2,362	2,046	2,404	2,301	1,734	2,213	2,241	2,297	2,416	2,335	2,259	2,248
TECHNICAL VIOLATORS	127	87	103	114	89	91	106	98	106	100	102	116
CONTROL RELEASE	-	-	-	-	-	-	-	-	-	-	-	-
CONDITIONAL RELEASE	127	87	103	114	89	91	106	98	106	100	102	116
LOSSES	2,140	2,194	2,128	2,207	2,103	1,964	2,325	2,058	2,243	2,134	2,242	2,155
PAROLES	NA	NA	NA	NA	NA	2	3	3	2	2	2	2
FROM NEW TECH. VIOLATORS	NA	NA	NA	NA	NA	4	22	44	50	54	64	66
END OF SENTENCE	NA	NA	NA	NA	NA	1,958	2,300	2,011	2,191	2,078	2,176	2,087
FROM STATUS POP	NA	NA	NA	NA	NA	1,832	2,127	1,805	1,937	1,764	1,809	1,650
FROM NEW COMMITMENTS	NA	NA	NA	NA	NA	126	173	206	254	314	367	437
END OF MONTH POPULATION	89,436	89,375	89,754	89,962	89,682	90,022	90,044	90,381	90,660	90,961	91,080	91,289
July 30, 2025 CJEC	89,397	89,566	89,679	89,874	89,910	89,696	89,904	90,212	90,517	90,775	90,897	91,100
Proposed over/(under) July 30, 2025 CJEC	39	(191)	75	88	(228)	326	140	169	143	186	183	189
Average Monthly Population (Total Population)												90,221
Average Monthly Population (Public Population)												78,378

**CRIMINAL JUSTICE ESTIMATING CONFERENCE DECEMBER 23, 2025  
DETAILED MONTHLY FORECAST  
EDR**

	JUL 26	AUG 26	SEP 26	OCT 26	NOV 26	DEC 26	JAN 27	FEB 27	MAR 27	APR 27	MAY 27	JUN 27
ADMISSIONS	2,396	2,350	2,325	2,457	2,220	2,060	2,382	2,464	2,560	2,473	2,438	2,396
NEW COMMITMENTS	2,282	2,240	2,220	2,345	2,114	1,971	2,278	2,366	2,456	2,374	2,337	2,283
TECHNICAL VIOLATORS	114	110	105	112	106	89	104	98	104	99	101	113
CONTROL RELEASE	-	-	-	-	-	-	-	-	-	-	-	-
CONDITIONAL RELEASE	114	110	105	112	106	89	104	98	104	99	101	113
LOSSES	2,228	2,286	2,248	2,339	2,153	2,333	2,281	2,158	2,289	2,230	2,220	2,217
PAROLES	2	1	2	1	2	2	3	3	2	2	2	2
FROM NEW TECH. VIOLATORS	68	72	78	80	83	84	82	82	87	87	86	88
END OF SENTENCE	2,158	2,213	2,168	2,258	2,068	2,247	2,196	2,073	2,200	2,141	2,132	2,127
FROM STATUS POP	1,643	1,612	1,487	1,505	1,263	1,402	1,281	1,107	1,175	1,070	1,007	961
FROM NEW COMMITMENTS	515	601	681	753	805	845	915	966	1,025	1,071	1,125	1,166
END OF MONTH POPULATION	91,457	91,521	91,598	91,716	91,783	91,510	91,611	91,917	92,188	92,431	92,649	92,828
July 30, 2025 CJEC	91,278	91,373	91,456	91,641	91,642	91,363	91,506	91,776	92,038	92,245	92,431	92,585
Proposed over/(under) July 30, 2025 CJEC	179	148	142	75	141	147	105	141	150	186	218	243
Average Monthly Population (Total Population)												91,934
Average Monthly Population (Public Population)												<b>80,091</b>

**CRIMINAL JUSTICE ESTIMATING CONFERENCE DECEMBER 23, 2025  
DETAILED MONTHLY FORECAST  
EDR**

	JUL 27	AUG 27	SEP 27	OCT 27	NOV 27	DEC 27	JAN 28	FEB 28	MAR 28	APR 28	MAY 28	JUN 28
ADMISSIONS	2,404	2,358	2,331	2,465	2,226	2,069	2,390	2,472	2,568	2,481	2,444	2,404
NEW COMMITMENTS	2,289	2,247	2,226	2,352	2,120	1,977	2,285	2,373	2,464	2,381	2,344	2,290
TECHNICAL VIOLATORS	115	111	105	113	106	92	105	99	104	100	100	114
CONTROL RELEASE	-	-	-	-	-	-	-	-	-	-	-	-
CONDITIONAL RELEASE	115	111	105	113	106	92	105	99	104	100	100	114
LOSSES	2,233	2,288	2,245	2,294	2,201	2,255	2,271	2,246	2,252	2,356	2,294	2,289
PAROLES	2	1	2	1	2	2	3	3	2	2	2	2
FROM NEW TECH. VIOLATORS	91	95	94	96	98	99	97	97	101	102	103	103
END OF SENTENCE	2,140	2,192	2,149	2,197	2,101	2,154	2,171	2,146	2,149	2,252	2,189	2,184
FROM STATUS POP	946	965	880	886	782	802	768	692	669	752	652	622
FROM NEW COMMITMENTS	1,194	1,227	1,269	1,311	1,319	1,352	1,403	1,454	1,480	1,500	1,537	1,562
END OF MONTH POPULATION	92,999	93,069	93,155	93,326	93,351	93,165	93,284	93,510	93,826	93,951	94,101	94,216
July 30, 2025 CJEC	92,704	92,771	92,823	92,984	92,962	92,724	92,804	92,966	93,209	93,365	93,444	93,538
Proposed over/(under) July 30, 2025 CJEC	295	298	332	342	389	441	480	544	617	586	657	678
Average Monthly Population (Total Population)												93,496
Average Monthly Population (Public Population)												<b>81,653</b>

**CRIMINAL JUSTICE ESTIMATING CONFERENCE DECEMBER 23, 2025  
DETAILED MONTHLY FORECAST  
EDR**

	JUL 28	AUG 28	SEP 28	OCT 28	NOV 28	DEC 28	JAN 29	FEB 29	MAR 29	APR 29	MAY 29	JUN 29
ADMISSIONS	2,407	2,362	2,336	2,468	2,231	2,072	2,395	2,476	2,573	2,486	2,450	2,408
NEW COMMITMENTS	2,293	2,250	2,230	2,356	2,124	1,980	2,289	2,377	2,468	2,385	2,349	2,295
TECHNICAL VIOLATORS	114	112	106	112	107	92	106	99	105	101	101	113
CONTROL RELEASE	-	-	-	-	-	-	-	-	-	-	-	-
CONDITIONAL RELEASE	114	112	106	112	107	92	106	99	105	101	101	113
LOSSES	2,326	2,314	2,303	2,350	2,289	2,309	2,302	2,285	2,309	2,335	2,304	2,318
PAROLES	2	1	2	1	2	2	3	3	2	2	2	2
FROM NEW TECH. VIOLATORS	106	109	108	107	108	107	104	102	104	104	103	104
END OF SENTENCE	2,218	2,204	2,193	2,242	2,179	2,200	2,195	2,180	2,203	2,229	2,199	2,212
FROM STATUS POP	622	587	555	579	500	518	502	477	484	500	460	454
FROM NEW COMMITMENTS	1,596	1,617	1,638	1,663	1,679	1,682	1,693	1,703	1,719	1,729	1,739	1,758
END OF MONTH POPULATION	94,297	94,345	94,378	94,496	94,438	94,201	94,294	94,485	94,749	94,900	95,046	95,136
July 30, 2025 CJEC	93,636	93,705	93,768	93,918	93,885	93,681	93,803	93,980	94,243	94,383	94,514	94,595
Proposed over/(under) July 30, 2025 CJEC	661	640	610	578	553	520	491	505	506	517	532	541
Average Monthly Population (Total Population)												94,564
Average Monthly Population (Public Population)												<b>82,721</b>

**CRIMINAL JUSTICE ESTIMATING CONFERENCE DECEMBER 23, 2025  
DETAILED MONTHLY FORECAST  
EDR**

	JUL 29	AUG 29	SEP 29	OCT 29	NOV 29	DEC 29	JAN 30	FEB 30	MAR 30	APR 30	MAY 30	JUN 30
ADMISSIONS	2,373	2,329	2,303	2,433	2,199	2,043	2,361	2,440	2,536	2,451	2,415	2,373
NEW COMMITMENTS	2,259	2,217	2,197	2,321	2,092	1,951	2,255	2,341	2,431	2,350	2,314	2,260
TECHNICAL VIOLATORS	114	112	106	112	107	92	106	99	105	101	101	113
CONTROL RELEASE	-	-	-	-	-	-	-	-	-	-	-	-
CONDITIONAL RELEASE	114	112	106	112	107	92	106	99	105	101	101	113
LOSSES	2,338	2,353	2,302	2,328	2,296	2,285	2,333	2,290	2,352	2,334	2,348	2,282
PAROLES	2	1	2	1	2	2	3	3	2	2	2	2
FROM NEW TECH. VIOLATORS	106	109	108	108	108	108	104	102	104	104	103	104
END OF SENTENCE	2,230	2,243	2,192	2,219	2,186	2,175	2,226	2,185	2,246	2,228	2,243	2,176
FROM STATUS POP	457	450	388	383	357	343	372	316	360	348	366	292
FROM NEW COMMITMENTS	1,773	1,793	1,804	1,836	1,829	1,832	1,854	1,869	1,886	1,880	1,877	1,884
END OF MONTH POPULATION	95,171	95,147	95,148	95,253	95,156	94,914	94,942	95,092	95,276	95,393	95,460	95,551
July 30, 2025 CJEC	94,637	94,644	94,631	94,726	94,626	94,374	94,411	94,541	94,737	94,841	94,890	94,966
Proposed over/(under) July 30, 2025 CJEC	534	503	517	527	530	540	531	551	539	552	570	585
Average Monthly Population (Total Population)												95,209
Average Monthly Population (Public Population)												<b>83,366</b>

**CRIMINAL JUSTICE ESTIMATING CONFERENCE DECEMBER 23, 2025  
DETAILED MONTHLY FORECAST  
EDR**

	JUL 30	AUG 30	SEP 30	OCT 30	NOV 30	DEC 30	JAN 31	FEB 31	MAR 31	APR 31	MAY 31	JUN 31
ADMISSIONS	2,374	2,331	2,305	2,434	2,201	2,044	2,363	2,442	2,538	2,452	2,416	2,376
NEW COMMITMENTS	2,260	2,219	2,199	2,322	2,094	1,952	2,257	2,343	2,433	2,351	2,315	2,263
TECHNICAL VIOLATORS	114	112	106	112	107	92	106	99	105	101	101	113
CONTROL RELEASE	-	-	-	-	-	-	-	-	-	-	-	-
CONDITIONAL RELEASE	114	112	106	112	107	92	106	99	105	101	101	113
LOSSES	2,341	2,322	2,289	2,385	2,341	2,357	2,357	2,313	2,378	2,356	2,305	2,358
PAROLES	2	1	2	1	2	2	3	3	2	2	2	2
FROM NEW TECH. VIOLATORS	106	109	108	108	108	108	104	102	104	104	103	104
END OF SENTENCE	2,233	2,212	2,179	2,276	2,231	2,247	2,250	2,208	2,272	2,250	2,200	2,252
FROM STATUS POP	338	314	274	349	306	334	314	265	317	299	251	297
FROM NEW COMMITMENTS	1,895	1,898	1,905	1,927	1,925	1,913	1,936	1,943	1,955	1,951	1,949	1,955
END OF MONTH POPULATION	95,584	95,593	95,609	95,658	95,518	95,205	95,211	95,340	95,500	95,596	95,707	95,725
July 30, 2025 CJEC	95,010	95,025	95,025	95,080	94,943	94,640	94,648	94,777	95,048	95,157	95,269	95,310
Proposed over/(under) July 30, 2025 CJEC	574	568	584	578	575	565	563	563	452	439	438	415
Average Monthly Population (Total Population)												95,521
Average Monthly Population (Public Population)												<b>83,678</b>

**CRIMINAL JUSTICE ESTIMATING CONFERENCE DECEMBER 23, 2025  
FISCAL YEAR FORECAST  
FEA**

	FY 24-25 ACTUAL	FY 25-26	FY 26-27	FY 27-28	FY 28-29	FY 29-30	FY 30-31
ADMISSIONS	27,802	27,820	28,570	28,670	28,725	28,326	28,350
NEW COMMITMENTS	26,606	26,581	27,315	27,406	27,457	27,058	27,082
TECHNICAL VIOLATORS	1,196	1,239	1,255	1,264	1,268	1,268	1,268
CONTROL RELEASE CONDITIONAL RELEASE	- 1,196	- 1,239	- 1,255	- 1,264	- 1,268	- 1,268	- 1,268
LOSSES	26,018	25,840	26,904	27,200	27,760	27,872	28,149
PAROLES	-	16	24	24	24	24	24
FROM NEW TECH. VIOLATORS	-	304	977	1,176	1,266	1,268	1,268
END OF SENTENCE	-	14,748	25,903	26,000	26,470	26,580	26,857
FROM STATUS POP FROM NEW COMMITMENTS	- -	12,924 1,824	15,513 10,390	9,416 16,584	6,238 20,232	4,432 22,148	3,658 23,199
END OF MONTH POPULATION	89,087	91,067	92,733	94,203	95,168	95,622	95,823
July 30, 2025 CJEC	89,087	91,100	92,585	93,538	94,595	94,966	95,310
Proposed over/(under) July 30, 2025 CJEC	-	(33)	148	665	573	656	513
Average Monthly Population (Total Population)	88,199	90,079	91,786	93,446	94,578	95,263	95,607
Average Monthly Population (Public Population)	<b>76,356</b>	<b>78,236</b>	<b>79,943</b>	<b>81,603</b>	<b>82,735</b>	<b>83,420</b>	<b>83,764</b>

**CRIMINAL JUSTICE ESTIMATING CONFERENCE DECEMBER 23, 2025  
DETAILED MONTHLY FORECAST  
FEA**

	JUL 25	AUG 25	SEP 25	OCT 25	NOV 25	DEC 25	JAN 26	FEB 26	MAR 26	APR 26	MAY 26	JUN 26
ADMISSIONS	2,489	2,133	2,507	2,415	1,823	2,029	2,347	2,395	2,522	2,435	2,361	2,364
NEW COMMITMENTS	2,362	2,046	2,404	2,301	1,734	1,938	2,241	2,297	2,416	2,335	2,259	2,248
TECHNICAL VIOLATORS	127	87	103	114	89	91	106	98	106	100	102	116
CONTROL RELEASE	-	-	-	-	-	-	-	-	-	-	-	-
CONDITIONAL RELEASE	127	87	103	114	89	91	106	98	106	100	102	116
LOSSES	2,140	2,194	2,128	2,207	2,103	1,948	2,319	2,055	2,238	2,126	2,235	2,147
PAROLES	NA	NA	NA	NA	NA	2	3	3	2	2	2	2
FROM NEW TECH. VIOLATORS	NA	NA	NA	NA	NA	4	22	44	50	54	64	66
END OF SENTENCE	NA	NA	NA	NA	NA	1,942	2,294	2,008	2,186	2,070	2,169	2,079
FROM STATUS POP	NA	NA	NA	NA	NA	1,832	2,127	1,805	1,937	1,764	1,809	1,650
FROM NEW COMMITMENTS	NA	NA	NA	NA	NA	110	167	203	249	306	360	429
END OF MONTH POPULATION	89,436	89,375	89,754	89,962	89,682	89,763	89,791	90,131	90,415	90,724	90,850	91,067
July 30, 2025 CJEC	89,397	89,566	89,679	89,874	89,910	89,696	89,904	90,212	90,517	90,775	90,897	91,100
Proposed over/(under) July 30, 2025 CJEC	39	(191)	75	88	(228)	67	(113)	(81)	(102)	(51)	(47)	(33)
Average Monthly Population (Total Population)												90,079
Average Monthly Population (Public Population)												78,236

**CRIMINAL JUSTICE ESTIMATING CONFERENCE DECEMBER 23, 2025  
DETAILED MONTHLY FORECAST  
FEA**

	JUL 26	AUG 26	SEP 26	OCT 26	NOV 26	DEC 26	JAN 27	FEB 27	MAR 27	APR 27	MAY 27	JUN 27
ADMISSIONS	2,400	2,354	2,329	2,461	2,224	2,064	2,386	2,468	2,565	2,477	2,442	2,400
NEW COMMITMENTS	2,286	2,244	2,224	2,349	2,118	1,975	2,282	2,370	2,461	2,378	2,341	2,287
TECHNICAL VIOLATORS	114	110	105	112	106	89	104	98	104	99	101	113
CONTROL RELEASE	-	-	-	-	-	-	-	-	-	-	-	-
CONDITIONAL RELEASE	114	110	105	112	106	89	104	98	104	99	101	113
LOSSES	2,219	2,276	2,239	2,332	2,146	2,328	2,275	2,154	2,283	2,225	2,214	2,213
PAROLES	2	1	2	1	2	2	3	3	2	2	2	2
FROM NEW TECH. VIOLATORS	68	72	78	80	83	84	82	82	87	87	86	88
END OF SENTENCE	2,149	2,203	2,159	2,251	2,061	2,242	2,190	2,069	2,194	2,136	2,126	2,123
FROM STATUS POP	1,643	1,612	1,487	1,505	1,263	1,402	1,281	1,107	1,175	1,070	1,007	961
FROM NEW COMMITMENTS	506	591	672	746	798	840	909	962	1,019	1,066	1,119	1,162
END OF MONTH POPULATION	91,248	91,326	91,416	91,545	91,623	91,359	91,470	91,784	92,066	92,318	92,546	92,733
July 30, 2025 CJEC	91,278	91,373	91,456	91,641	91,642	91,363	91,506	91,776	92,038	92,245	92,431	92,585
Proposed over/(under) July 30, 2025 CJEC	(30)	(47)	(40)	(96)	(19)	(4)	(36)	8	28	73	115	148
Average Monthly Population (Total Population)												91,786
Average Monthly Population (Public Population)												<b>79,943</b>

**CRIMINAL JUSTICE ESTIMATING CONFERENCE DECEMBER 23, 2025  
DETAILED MONTHLY FORECAST  
FEA**

	JUL 27	AUG 27	SEP 27	OCT 27	NOV 27	DEC 27	JAN 28	FEB 28	MAR 28	APR 28	MAY 28	JUN 28
ADMISSIONS	2,409	2,363	2,336	2,470	2,230	2,073	2,395	2,477	2,573	2,486	2,449	2,409
NEW COMMITMENTS	2,294	2,252	2,231	2,357	2,124	1,981	2,290	2,378	2,469	2,386	2,349	2,295
TECHNICAL VIOLATORS	115	111	105	113	106	92	105	99	104	100	100	114
CONTROL RELEASE	-	-	-	-	-	-	-	-	-	-	-	-
CONDITIONAL RELEASE	115	111	105	113	106	92	105	99	104	100	100	114
LOSSES	2,231	2,286	2,242	2,292	2,201	2,251	2,268	2,243	2,252	2,355	2,291	2,288
PAROLES	2	1	2	1	2	2	3	3	2	2	2	2
FROM NEW TECH. VIOLATORS	91	95	94	96	98	99	97	97	101	102	103	103
END OF SENTENCE	2,138	2,190	2,146	2,195	2,101	2,150	2,168	2,143	2,149	2,251	2,186	2,183
FROM STATUS POP	946	965	880	886	782	802	768	692	669	752	652	622
FROM NEW COMMITMENTS	1,192	1,225	1,266	1,309	1,319	1,348	1,400	1,451	1,480	1,499	1,534	1,561
END OF MONTH POPULATION	92,911	92,988	93,082	93,260	93,289	93,111	93,238	93,472	93,793	93,924	94,082	94,203
July 30, 2025 CJEC	92,704	92,771	92,823	92,984	92,962	92,724	92,804	92,966	93,209	93,365	93,444	93,538
Proposed over/(under) July 30, 2025 CJEC	207	217	259	276	327	387	434	506	584	559	638	665
Average Monthly Population (Total Population)												93,446
Average Monthly Population (Public Population)												<b>81,603</b>

**CRIMINAL JUSTICE ESTIMATING CONFERENCE DECEMBER 23, 2025  
DETAILED MONTHLY FORECAST  
FEA**

	JUL 28	AUG 28	SEP 28	OCT 28	NOV 28	DEC 28	JAN 29	FEB 29	MAR 29	APR 29	MAY 29	JUN 29
ADMISSIONS	2,412	2,367	2,341	2,473	2,236	2,077	2,400	2,481	2,579	2,491	2,455	2,413
NEW COMMITMENTS	2,298	2,255	2,235	2,361	2,129	1,985	2,294	2,382	2,474	2,390	2,354	2,300
TECHNICAL VIOLATORS	114	112	106	112	107	92	106	99	105	101	101	113
CONTROL RELEASE	-	-	-	-	-	-	-	-	-	-	-	-
CONDITIONAL RELEASE	114	112	106	112	107	92	106	99	105	101	101	113
LOSSES	2,325	2,314	2,303	2,352	2,289	2,310	2,305	2,288	2,311	2,337	2,306	2,320
PAROLES	2	1	2	1	2	2	3	3	2	2	2	2
FROM NEW TECH. VIOLATORS	106	109	108	107	108	107	104	102	104	104	103	104
END OF SENTENCE	2,217	2,204	2,193	2,244	2,179	2,201	2,198	2,183	2,205	2,231	2,201	2,214
FROM STATUS POP	622	587	555	579	500	518	502	477	484	500	460	454
FROM NEW COMMITMENTS	1,595	1,617	1,638	1,665	1,679	1,683	1,696	1,706	1,721	1,731	1,741	1,760
END OF MONTH POPULATION	94,290	94,343	94,381	94,502	94,449	94,216	94,311	94,504	94,772	94,926	95,075	95,168
July 30, 2025 CJEC	93,636	93,705	93,768	93,918	93,885	93,681	93,803	93,980	94,243	94,383	94,514	94,595
Proposed over/(under) July 30, 2025 CJEC	654	638	613	584	564	535	508	524	529	543	561	573
Average Monthly Population (Total Population)												94,578
Average Monthly Population (Public Population)												<b>82,735</b>

**CRIMINAL JUSTICE ESTIMATING CONFERENCE DECEMBER 23, 2025  
DETAILED MONTHLY FORECAST  
FEA**

	JUL 29	AUG 29	SEP 29	OCT 29	NOV 29	DEC 29	JAN 30	FEB 30	MAR 30	APR 30	MAY 30	JUN 30
ADMISSIONS	2,379	2,335	2,309	2,439	2,204	2,048	2,367	2,446	2,542	2,457	2,421	2,379
NEW COMMITMENTS	2,265	2,223	2,203	2,327	2,097	1,956	2,261	2,347	2,437	2,356	2,320	2,266
TECHNICAL VIOLATORS	114	112	106	112	107	92	106	99	105	101	101	113
CONTROL RELEASE	-	-	-	-	-	-	-	-	-	-	-	-
CONDITIONAL RELEASE	114	112	106	112	107	92	106	99	105	101	101	113
LOSSES	2,340	2,354	2,305	2,330	2,299	2,287	2,335	2,293	2,354	2,338	2,352	2,285
PAROLES	2	1	2	1	2	2	3	3	2	2	2	2
FROM NEW TECH. VIOLATORS	106	109	108	108	108	108	104	102	104	104	103	104
END OF SENTENCE	2,232	2,244	2,195	2,221	2,189	2,177	2,228	2,188	2,248	2,232	2,247	2,179
FROM STATUS POP	457	450	388	383	357	343	372	316	360	348	366	292
FROM NEW COMMITMENTS	1,775	1,794	1,807	1,838	1,832	1,834	1,856	1,872	1,888	1,884	1,881	1,887
END OF MONTH POPULATION	95,207	95,188	95,192	95,301	95,206	94,967	94,999	95,152	95,340	95,459	95,528	95,622
July 30, 2025 CJEC	94,637	94,644	94,631	94,726	94,626	94,374	94,411	94,541	94,737	94,841	94,890	94,966
Proposed over/(under) July 30, 2025 CJEC	570	544	561	575	580	593	588	611	603	618	638	656
Average Monthly Population (Total Population)												95,263
Average Monthly Population (Public Population)												<b>83,420</b>

**CRIMINAL JUSTICE ESTIMATING CONFERENCE DECEMBER 23, 2025  
DETAILED MONTHLY FORECAST  
FEA**

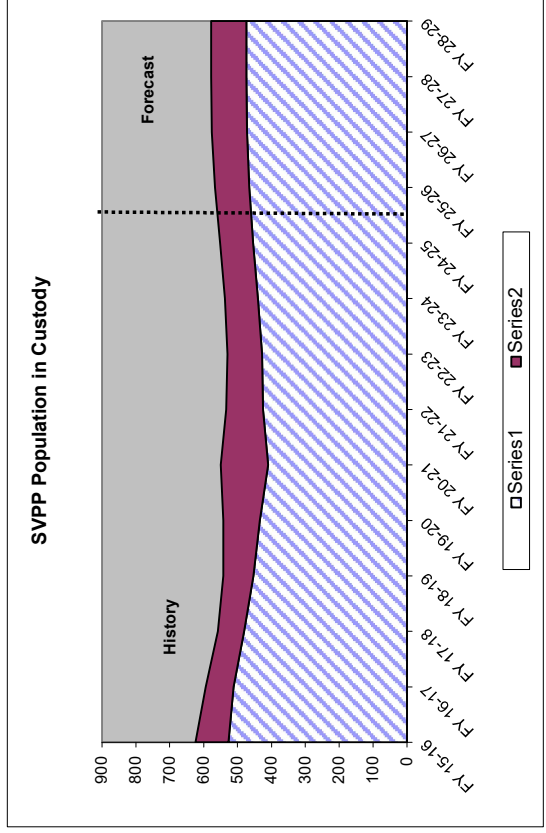
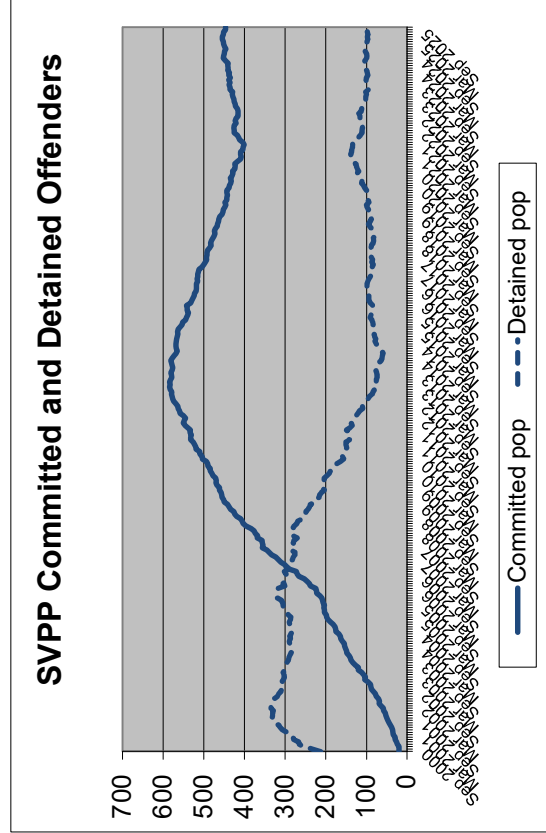
	JUL 30	AUG 30	SEP 30	OCT 30	NOV 30	DEC 30	JAN 31	FEB 31	MAR 31	APR 31	MAY 31	JUN 31
ADMISSIONS	2,380	2,337	2,311	2,440	2,207	2,049	2,369	2,449	2,545	2,459	2,422	2,382
NEW COMMITMENTS	2,266	2,225	2,205	2,328	2,100	1,957	2,263	2,350	2,440	2,358	2,321	2,269
TECHNICAL VIOLATORS	114	112	106	112	107	92	106	99	105	101	101	113
CONTROL RELEASE	-	-	-	-	-	-	-	-	-	-	-	-
CONDITIONAL RELEASE	114	112	106	112	107	92	106	99	105	101	101	113
LOSSES	2,344	2,326	2,293	2,388	2,345	2,361	2,361	2,317	2,382	2,360	2,310	2,362
PAROLES	2	1	2	1	2	2	3	3	2	2	2	2
FROM NEW TECH. VIOLATORS	106	109	108	108	108	108	104	102	104	104	103	104
END OF SENTENCE	2,236	2,216	2,183	2,279	2,235	2,251	2,254	2,212	2,276	2,254	2,205	2,256
FROM STATUS POP	338	314	274	349	306	334	314	265	317	299	251	297
FROM NEW COMMITMENTS	1,898	1,902	1,909	1,930	1,929	1,917	1,940	1,947	1,959	1,955	1,954	1,959
END OF MONTH POPULATION	95,658	95,669	95,687	95,739	95,601	95,289	95,297	95,429	95,592	95,691	95,803	95,823
July 30, 2025 CJEC	95,010	95,025	95,025	95,080	94,943	94,640	94,648	94,777	95,048	95,157	95,269	95,310
Proposed over/(under) July 30, 2025 CJEC	648	644	662	659	658	649	649	652	544	534	534	513
Average Monthly Population (Total Population)												95,607
Average Monthly Population (Public Population)												<b>83,764</b>

**INVOLUNTARY CIVIL COMMITMENT OF SEXUALLY VIOLENT PREDATORS-- HISTORY AND FORECAST**  
 Adopted at the December 23, 2025 Criminal Justice Estimating Conference

	FY 15-16	FY 16-17	FY 17-18	FY 18-19	FY 19-20	FY 20-21	FY 21-22	FY 22-23	FY 23-24	FY 24-25	FY 25-26	FY 26-27	FY 27-28	FY 28-29
<b>Commitments</b>	35	31	28	20	15	22	55	30	44	39	43	39	35	35
<b>Releases</b>	66	46	59	48	34	46	40	27	32	25	32	32	33	35
<b>June 30th Committed Population</b>	<b>527</b>	<b>512</b>	<b>481</b>	<b>453</b>	<b>434</b>	<b>410</b>	<b>425</b>	<b>428</b>	<b>440</b>	<b>454</b>	<b>465</b>	<b>472</b>	<b>474</b>	<b>474</b>
Change	-31	-15	-31	-28	-19	-24	15	3	12	14	11	7	2	0
Percent Change	-5.6%	-2.8%	-6.1%	-5.8%	-4.2%	-5.5%	3.7%	0.7%	2.8%	3.2%	2.4%	1.5%	0.4%	0.0%
<b>June 30th Detained Population</b>	<b>97</b>	<b>82</b>	<b>77</b>	<b>89</b>	<b>108</b>	<b>140</b>	<b>108</b>	<b>102</b>	<b>97</b>	<b>97</b>	<b>102</b>	<b>104</b>	<b>104</b>	<b>104</b>
Change	16	-15	-5	12	19	32	-32	-6	-5	0	5	2	0	0
Percent Change	19.8%	-15.5%	-6.1%	15.6%	21.3%	29.6%	-22.9%	-5.6%	-4.9%	0.0%	5.2%	2.0%	0.0%	0.0%
<b>June 30th Population in Custody</b>	<b>624</b>	<b>594</b>	<b>558</b>	<b>542</b>	<b>542</b>	<b>550</b>	<b>533</b>	<b>530</b>	<b>537</b>	<b>551</b>	<b>567</b>	<b>576</b>	<b>578</b>	<b>578</b>
Change	-15	-30	-36	-16	0	8	-17	-3	7	14	16	9	2	0
Percent Change	-2.3%	-4.8%	-6.1%	-2.9%	0.0%	1.5%	-3.1%	-0.6%	1.3%	2.6%	2.9%	1.6%	0.3%	0.0%

June 30th Population in Custody--  
 July 2025 CJEC

December 2025 CJEC Projected  
 Population over (under) July 2025  
 CJEC



## DOC SUPERVISED POPULATION HISTORY AND FORECAST

Adopted at the December 23, 2025 Criminal Justice Estimating Conference

	FY 19-20	FY 20-21	FY 21-22	FY 22-23	FY 23-24	FY 24-25	FY 25-26	FY 26-27	FY 27-28	FY 28-29
<b>PROBATION</b>										
GAINS	37,502	33,848	41,668	40,760	40,500	41,009	42,309	41,912	41,611	41,520
LOSSES	43,407	38,211	39,507	42,337	38,189	40,426	41,358	40,921	41,140	41,140
POPULATION	60,237	55,874	58,035	56,458	58,769	59,352	60,303	61,294	61,765	62,145
<b>DRUG OFFENDER PROBATION</b>										
GAINS	7,556	6,722	7,298	6,935	7,148	6,677	7,127	7,127	7,127	7,127
LOSSES	8,728	8,646	7,416	7,194	6,859	6,973	7,027	7,027	7,027	7,027
POPULATION	11,074	9,150	9,032	8,773	9,062	8,766	8,866	8,966	9,066	9,166
<b>SEX OFFENDER PROBATION</b>										
GAINS	731	780	880	869	943	1,002	973	973	973	973
LOSSES	703	764	847	1,155	623	996	808	851	851	851
POPULATION	3,739	3,755	3,788	3,502	3,822	3,828	3,993	4,114	4,236	4,357
<b>COMMUNITY CONTROL</b>										
GAINS	4,514	4,650	5,010	4,697	4,417	4,082	4,250	4,456	4,456	4,456
LOSSES	5,193	4,765	4,913	4,971	4,529	4,194	4,242	4,428	4,428	4,428
POPULATION	5,285	5,170	5,267	4,993	4,881	4,769	4,777	4,805	4,833	4,861
<b>PAROLE</b>										
GAINS	840	846	702	618	582	569	569	569	569	569
LOSSES	861	844	887	769	719	641	641	641	641	641
POPULATION	1,956	1,958	1,773	1,622	1,485	1,413	1,341	1,269	1,197	1,125
<b>CONDITIONAL RELEASE</b>										
GAINS	5,220	4,641	4,583	4,742	4,937	4,751	4,844	4,844	4,844	4,844
LOSSES	5,154	4,947	4,586	4,882	4,961	4,824	4,760	4,719	4,844	4,844
POPULATION	2,268	1,962	1,959	1,819	1,795	1,722	1,806	1,931	1,931	1,931
<b>ADDICTION RECOVERY &amp; OTHER</b>										
GAINS	1,010	675	525	549	590	586	586	586	586	586
LOSSES	1,046	759	511	561	566	611	555	586	586	586
POPULATION	175	91	105	93	117	92	123	123	123	123
<b>PRE-TRIAL INTERVENTION</b>										
GAINS	7,843	7,472	8,248	8,341	8,483	7,766	8,125	7,945	8,035	7,990
LOSSES	10,398	7,813	7,972	8,412	8,550	8,351	7,832	7,639	8,035	7,990
POPULATION	6,904	6,563	6,839	6,768	6,701	6,116	6,409	6,715	6,715	6,715
<b>TOTAL POP 6/30</b>	91,638	84,523	86,798	84,028	86,632	86,058	87,617	89,217	89,865	90,423
<b>Change</b>	-10.1%	-7.8%	2.7%	-3.2%	3.1%	-0.7%	1.8%	1.8%	0.7%	0.6%
February 2025 CJEC						87,909	89,095	90,101	90,562	
Proposed over/under February 2025 CJEC						-1,851	-1,478	-884	-697	

On June 30, 2025, there were 1,824 sex offenders as designated by the Public Safety Information Act (F.S. 944.606 and 944.607) who have a current or prior sexual offense but did not qualify or were not placed on Sex Offender Probation. They are as follows (attachment contains detail): Probation: 944 (felony probation, misdemeanor probation, admin probation); Conditional Release: 234; Parole (parole-state and cc-parole): 96; and Drug Offender Probation: 43. In addition, on June 30, 2025, Community Control included 176 offenders and an additional 331 designated sex offenders.

# DOC SUPERVISED POPULATION HISTORY AND FORECAST--CHANGE FROM PRIOR YEAR

Adopted at the December 23, 2025 Criminal Justice Estimating Conference

	FY 20-21	FY 21-22	FY 22-23	FY 23-24	FY 24-25	FY 25-26	FY 26-27	FY 27-28	FY 28-29
<b>PROBATION</b>									
GAINS	-3,654	7,820	-908	-260	509	1,300	-397	-301	-91
LOSSES	-5,196	1,296	2,830	-4,148	2,237	932	-437	219	0
POPULATION	-4,363	2,161	-1,577	2,311	583	951	991	471	380
<b>DRUG OFFENDER PROBATION</b>									
GAINS	-834	576	-363	213	-471	450	0	0	0
LOSSES	-82	-1,230	-222	-335	114	54	0	0	0
POPULATION	-1,924	-118	-259	289	-296	100	100	100	100
<b>SEX OFFENDER PROBATION</b>									
GAINS	49	100	-11	74	59	-30	0	0	0
LOSSES	61	83	308	-532	373	-188	43	0	0
POPULATION	16	33	-286	320	6	165	122	122	122
<b>COMMUNITY CONTROL</b>									
GAINS	136	360	-313	-280	-335	168	207	0	0
LOSSES	-428	148	58	-442	-335	48	187	0	0
POPULATION	-115	97	-274	-112	-112	8	28	28	28
<b>PAROLE</b>									
GAINS	6	-144	-84	-36	-13	0	0	0	0
LOSSES	-17	43	-118	-50	-78	0	0	0	0
POPULATION	2	-185	-151	-137	-72	-72	-72	-72	-72
<b>CONDITIONAL RELEASE</b>									
GAINS	-579	-58	159	195	-186	93	0	0	0
LOSSES	-207	-361	296	79	-137	-64	-41	125	0
POPULATION	-306	-3	-140	-24	-73	84	125	0	0
<b>ADDICTION RECOVERY &amp; OTHER</b>									
GAINS	-335	-150	24	41	-4	0	0	0	0
LOSSES	-287	-248	50	5	45	-56	31	0	0
POPULATION	-84	14	-12	24	-25	31	0	0	0
<b>PRE-TRIAL INTERVENTION</b>									
GAINS	-371	776	93	142	-717	359	-179	90	-45
LOSSES	-2,585	159	440	138	-199	-519	-193	396	-45
POPULATION	-341	276	-71	-67	-585	293	306	0	0
<b>TOTAL POP 6/30</b>	-7,115	2,275	-2,770	2,604	-574	1,559	1,600	649	558

On June 30, 2025, there were 1,824 sex offenders as designated by the Public Safety Information Act (F.S. 944.606 and 944.607) who have a current or prior sexual offense but did not qualify or were not placed on Sex Offender Probation. They are as follows (attachment contains detail): Probation: 944 (felony probation, misdemeanor probation, admin probation); Conditional Release: 234; Parole (parole-state and cc-parole): 96; and Drug Offender Probation: 43. In addition, on June 30, 2025, Community Control included 176 offenders and an additional 331 designated sex offenders.

# DOC SUPERVISED POPULATION HISTORY AND FORECAST--PERCENTAGE CHANGE

Adopted at the December 23, 2025 Criminal Justice Estimating Conference

	FY 20-21	FY 21-22	FY 22-23	FY 23-24	FY 24-25	FY 25-26	FY 26-27	FY 27-28	FY 28-29
<b>PROBATION</b>									
GAINS	-9.7%	23.1%	-2.2%	-0.6%	1.3%	3.2%	-0.9%	-0.7%	-0.2%
LOSSES	-12.0%	3.4%	7.2%	-9.8%	5.9%	2.3%	-1.1%	0.5%	0.0%
POPULATION	-7.2%	3.9%	-2.7%	4.1%	1.0%	1.6%	1.6%	0.8%	0.6%
<b>DRUG OFFENDER PROBATION</b>									
GAINS	-11.0%	8.6%	-5.0%	3.1%	-6.6%	6.7%	0.0%	0.0%	0.0%
LOSSES	-0.9%	-14.2%	-3.0%	-4.7%	1.7%	0.8%	0.0%	0.0%	0.0%
POPULATION	-17.4%	-1.3%	-2.9%	3.3%	-3.3%	1.1%	1.1%	1.1%	1.1%
<b>SEX OFFENDER PROBATION</b>									
GAINS	6.7%	12.8%	-1.3%	8.5%	6.3%	-2.9%	0.0%	0.0%	0.0%
LOSSES	8.7%	10.9%	36.4%	-46.1%	59.9%	-18.9%	5.3%	0.0%	0.0%
POPULATION	0.4%	0.9%	-7.6%	9.1%	0.2%	4.3%	3.0%	3.0%	2.9%
<b>COMMUNITY CONTROL</b>									
GAINS	3.0%	7.7%	-6.2%	-6.0%	-7.6%	4.1%	4.9%	0.0%	0.0%
LOSSES	-8.2%	3.1%	1.2%	-8.9%	-7.4%	1.1%	4.4%	0.0%	0.0%
POPULATION	-2.2%	1.9%	-5.2%	-2.2%	-2.3%	0.2%	0.6%	0.6%	0.6%
<b>PAROLE</b>									
GAINS	0.7%	-17.0%	-12.0%	-5.8%	-2.2%	0.0%	0.0%	0.0%	0.0%
LOSSES	-2.0%	5.1%	-13.3%	-6.5%	-10.8%	0.0%	0.0%	0.0%	0.0%
POPULATION	0.1%	-9.4%	-8.5%	-8.4%	-4.8%	-5.1%	-5.4%	-5.7%	-6.0%
<b>CONDITIONAL RELEASE</b>									
GAINS	-11.1%	-1.2%	3.5%	4.1%	-3.8%	2.0%	0.0%	0.0%	0.0%
LOSSES	-4.0%	-7.3%	6.5%	1.6%	-2.8%	-1.3%	-0.9%	2.6%	0.0%
POPULATION	-13.5%	-0.2%	-7.1%	-1.3%	-4.1%	4.9%	6.9%	0.0%	0.0%
<b>ADDICTION RECOVERY &amp; OTHER</b>									
GAINS	-33.2%	-22.2%	4.6%	7.5%	-0.7%	0.0%	0.0%	0.0%	0.0%
LOSSES	-27.4%	-32.7%	9.8%	0.9%	8.0%	-9.2%	5.6%	0.0%	0.0%
POPULATION	-48.0%	15.4%	-11.4%	25.8%	-21.4%	33.7%	0.0%	0.0%	0.0%
<b>PRE-TRIAL INTERVENTION</b>									
GAINS	-4.7%	10.4%	1.1%	1.7%	-8.5%	4.6%	-2.2%	1.1%	-0.6%
LOSSES	-24.9%	2.0%	5.5%	1.6%	-2.3%	-6.2%	-2.5%	5.2%	-0.6%
POPULATION	-4.9%	4.2%	-1.0%	-1.0%	-8.7%	4.8%	4.8%	0.0%	0.0%
<b>TOTAL POP 6/30</b>	-7.8%	2.7%	-3.2%	3.1%	-0.7%	1.8%	1.8%	0.7%	0.6%

Prepared by Florida Legislature, Office of Economic and Demographic Research, November 25, 2025

**MONITORING PRISON ADMISSIONS TO THE DEPARTMENT OF CORRECTIONS  
SINCE THE CRIMINAL JUSTICE ESTIMATING CONFERENCE HELD 7/28/2023**

MONTH	ADMISSIONS		MONTHLY OVER/ (UNDER)	CUMULATIVE OVER/ (UNDER)
	ESTIMATE	ACTUAL		
July 2023	2,281	2,186	-95	-95
August 2023	2,370	1,979	-391	-486
September 2023	2,353	2,540	187	-299
October 2023	2,213	2,497	284	-15
November 2023*	2,501	2,268	-233	-248
<b>Total</b>	<b>11,718</b>	<b>11,470</b>	<b>% Error:</b>	<b>-2.1%</b>

\* Preliminary actual

**MONITORING PRISON POPULATION IN THE DEPARTMENT OF CORRECTIONS  
SINCE THE CRIMINAL JUSTICE ESTIMATING CONFERENCE HELD 7/28/2023**

MONTH	POPULATION		CUMULATIVE OVER/ (UNDER)
	ESTIMATE	ACTUAL	
July 2023	85,345	85,172	-173
August 2023	85,663	84,953	-710
September 2023	85,874	85,308	-566
October 2023	85,930	85,711	-219
November 2023	86,381	85,928	-453
	<b>-0.5%</b>	<b>Error</b>	

**MONITORING PRISON ADMISSIONS TO THE DEPARTMENT OF CORRECTIONS  
SINCE THE CRIMINAL JUSTICE ESTIMATING CONFERENCE HELD 12/15/2023**

MONTH	ADMISSIONS		MONTHLY OVER/ (UNDER)	CUMULATIVE OVER/ (UNDER)
	ESTIMATE	ACTUAL		
December 2023	2,399	1,959	-440	-440
January 2024	2,250	2,299	49	-391
February 2024	2,353	2,441	88	-303
March 2024	2,781	2,462	-319	-622
April 2024	2,361	2,396	35	-587
May 2024	2,537	2,478	-59	-646
June 2024*	2,677	2,304	-373	-1,019
<b>Total</b>	<b>17,358</b>	<b>16,339</b>	<b>% Error:</b>	<b>-5.9%</b>

\* Preliminary actual

**MONITORING PRISON POPULATION IN THE DEPARTMENT OF CORRECTIONS  
SINCE THE CRIMINAL JUSTICE ESTIMATING CONFERENCE HELD 12/15/2023**

MONTH	POPULATION		CUMULATIVE OVER/ (UNDER)
	ESTIMATE	ACTUAL	
December 2023	86,201	85,775	-426
January 2024	86,304	85,921	-383
February 2024	86,579	86,233	-346
March 2024	87,135	86,538	-597
April 2024	87,346	86,819	-527
May 2024	87,626	87,043	-583
June 2024	88,240	87,303	-937
	<b>-1.1%</b>	<b>Error</b>	

**MONITORING PRISON ADMISSIONS TO THE DEPARTMENT OF CORRECTIONS  
SINCE THE CRIMINAL JUSTICE ESTIMATING CONFERENCE HELD 7/31/2024**

MONTH	ADMISSIONS		MONTHLY OVER/ (UNDER)	CUMULATIVE OVER/ (UNDER)
	ESTIMATE	ACTUAL		
July 2024	2,380	2,486	106	106
August 2024	2,421	2,319	-102	4
September 2024	2,374	1,892	-482	-478
October 2024	2,347	2,647	300	-178
November 2024	2,294	2,052	-242	-420
December 2024	2,429	2,062	-367	-787
January 2025*	2,085	2,332	247	-540
<b>Total</b>	<b>16,330</b>	<b>15,790</b>	<b>% Error:</b>	<b>-3.3%</b>

\* Preliminary actual

**MONITORING PRISON POPULATION IN THE DEPARTMENT OF CORRECTIONS  
SINCE THE CRIMINAL JUSTICE ESTIMATING CONFERENCE HELD 7/31/2024**

MONTH	POPULATION		CUMULATIVE OVER/ (UNDER)
	ESTIMATE	ACTUAL	
July 2024	87,688	87,684	-4
August 2024	87,968	87,742	-226
September 2024	88,191	87,562	-629
October 2024	88,315	87,974	-341
November 2024	88,484	87,973	-511
December 2024	88,649	87,908	-741
January 2025	88,518	87,978	-540
	<b>-0.6%</b>	<b>Error</b>	

**MONITORING PRISON ADMISSIONS TO THE DEPARTMENT OF CORRECTIONS  
SINCE THE CRIMINAL JUSTICE ESTIMATING CONFERENCE HELD 2/21/2025**

MONTH	ADMISSIONS		MONTHLY OVER/ (UNDER)	CUMULATIVE OVER/ (UNDER)
	ESTIMATE	ACTUAL		
February 2025	2,299	2,354	55	55
March 2025	2,498	2,519	21	76
April 2025	2,320	2,467	147	223
May 2025	2,451	2,323	-128	95
June 2025*	2,557	2,349	-208	-113
<b>Total</b>	<b>12,125</b>	<b>12,012</b>	<b>% Error:</b>	<b>-0.9%</b>

\* Preliminary actual

**MONITORING PRISON POPULATION IN THE DEPARTMENT OF CORRECTIONS  
SINCE THE CRIMINAL JUSTICE ESTIMATING CONFERENCE HELD 2/21/2025**

MONTH	POPULATION		CUMULATIVE OVER/ (UNDER)
	ESTIMATE	ACTUAL	
February 2025	88,475	88,258	-217
March 2025	88,677	88,499	-178
April 2025	88,806	88,815	9
May 2025	89,026	88,908	-118
June 2025	89,466	89,087	-379
	<b>-0.4%</b>	<b>Error</b>	

**MONITORING PRISON ADMISSIONS TO THE DEPARTMENT OF CORRECTIONS  
SINCE THE CRIMINAL JUSTICE ESTIMATING CONFERENCE HELD 7/30/2025**

MONTH	ADMISSIONS		MONTHLY OVER/ (UNDER)	CUMULATIVE OVER/ (UNDER)
	ESTIMATE	ACTUAL		
July 2025	2,433	2,489	56	56
August 2025	2,312	2,133	-179	-123
September 2025	2,286	2,507	221	98
October 2025	2,413	2,415	2	100
November 2025*	2,183	1,823	-360	-260
<b>Total</b>	<b>11,627</b>	<b>11,367</b>	<b>% Error:</b>	<b>-2.2%</b>

\* Preliminary actual

**MONITORING PRISON POPULATION IN THE DEPARTMENT OF CORRECTIONS  
SINCE THE CRIMINAL JUSTICE ESTIMATING CONFERENCE HELD 7/30/2025**

MONTH	POPULATION		CUMULATIVE OVER/ (UNDER)
	ESTIMATE	ACTUAL	
July 2025	89,397	89,436	39
August 2025	89,566	89,375	-191
September 2025	89,679	89,754	75
October 2025	89,874	89,962	88
November 2025	89,910	89,682	-228
	<b>-0.3%</b>	<b>Error</b>	