

Demographic Estimating Conference

Executive Summary

The Demographic Estimating Conference met on October 18, 2006 to revise the state population projection through 2011. This revised projection will be incorporated into a new long-term population projection through 2030.

Florida's April 1, 2006 population was approximately 18,350,000, up 24,000 from the fall 2005 forecast. Florida's population is forecast to increase over the next 5 years, but at a slightly slower growth rate in the near term (2007 and 2008), reflecting a slowing housing and job market. By 2011, Florida's population is expected to surpass the 20 million mark, totaling over 20,380,000.

The conference focused on the components of population and population growth, such as: births and deaths; and domestic and foreign migration. In addition, discussion centered on the school aged population with presentations on the preliminary results from a survey of school districts and preliminary analysis of enrollment counts. The education data indicated that growth in school aged population has slowed statewide and in specific regions within the state over the past year. This slowing of growth appears to be due to fewer students entering the system from other U.S. areas and possibly to more students leaving the system.

FLORIDA DEMOGRAPHIC ESTIMATING CONFERENCE

Tables

Held October 18, 2006

Florida Resident Population

	<u>FDEC, 02/06</u> <u>(As of 4/1)</u>	<u>% Chg</u>	<u>FDEC, 10/06</u> <u>(As of 4/1)</u>	<u>% Chg</u>
1990	12,938,071	2.27%	12,938,071	2.27%
1991	13,258,732	2.48%	13,258,732	2.48%
1992	13,497,541	1.80%	13,497,541	1.80%
1993	13,730,115	1.72%	13,730,115	1.72%
1994	14,043,757	2.28%	14,043,757	2.28%
1995	14,335,992	2.08%	14,335,992	2.08%
1996	14,623,421	2.00%	14,623,421	2.00%
1997	14,938,314	2.15%	14,938,314	2.15%
1998	15,230,421	1.96%	15,230,421	1.96%
1999	15,580,244	2.30%	15,580,244	2.30%
2000	15,982,824	2.58%	15,982,824	2.58%
2001	16,330,224	2.17%	16,330,224	2.17%
2002	16,674,608	2.11%	16,674,608	2.11%
2003	17,071,508	2.38%	17,071,508	2.38%
2004	17,516,732	2.61%	17,516,732	2.61%
2005	17,918,227	2.29%	17,918,227	2.29%
2006	18,324,606	2.27%	18,348,624	2.40%
Begins forecast.				
2007	18,737,766	2.25%	18,747,953	2.18%
2008	19,139,961	2.15%	19,149,687	2.14%
2009	19,532,570	2.05%	19,562,501	2.16%
2010	19,920,326	1.99%	19,974,199	2.10%
2011	20,303,189	1.92%	20,366,731	1.97%
2012	20,678,339	1.85%	20,743,908	1.85%
2013	21,047,539	1.79%	21,112,676	1.78%
2014	21,410,966	1.73%	21,474,839	1.72%
2015	21,767,521	1.67%	21,831,512	1.66%
2020	23,475,835	1.52%	23,552,138	1.53%
2025	24,998,014	1.26%	25,085,972	1.27%
2030	26,419,166	1.11%	26,513,331	1.11%

Florida Resident Households

	<u>FDEC, 02/06</u> <u>(As of 4/1)</u>	<u>% Chg</u>	<u>FDEC, 10/06</u> <u>(As of 4/1)</u>	<u>% Chg</u>
1990	5,134,869	3.40%	5,134,869	3.40%
1991	5,283,154	2.89%	5,283,154	2.89%
1992	5,378,499	1.80%	5,378,499	1.80%
1993	5,478,476	1.86%	5,478,476	1.86%
1994	5,589,093	2.02%	5,589,093	2.02%
1995	5,697,328	1.94%	5,697,328	1.94%
1996	5,806,031	1.91%	5,806,031	1.91%
1997	5,929,613	2.13%	5,929,613	2.13%
1998	6,040,514	1.87%	6,040,514	1.87%
1999	6,182,346	2.35%	6,182,346	2.35%
2000	6,338,075	2.52%	6,338,075	2.52%
2001	6,483,040	2.29%	6,483,040	2.29%
2002	6,620,674	2.12%	6,620,674	2.12%
2003	6,778,804	2.39%	6,778,804	2.39%
2004	6,949,759	2.52%	6,949,759	2.52%
2005	7,105,018	2.23%	7,109,208	2.29%
2006	7,271,052	2.34%	7,281,537	2.42%
Begins forecast.				
2007	7,437,327	2.29%	7,442,308	2.21%
2008	7,598,846	2.17%	7,603,475	2.17%
2009	7,756,181	2.07%	7,768,030	2.16%
2010	7,911,251	2.00%	7,932,137	2.11%
2011	8,064,139	1.93%	8,088,772	1.97%
2012	8,213,799	1.86%	8,238,979	1.86%
2013	8,360,927	1.79%	8,385,670	1.78%
2014	8,505,667	1.73%	8,529,588	1.72%
2015	8,647,695	1.67%	8,671,301	1.66%
2020	9,327,971	1.53%	9,355,169	1.53%
2025	9,935,006	1.27%	9,964,993	1.27%
2030	10,502,047	1.12%	10,533,525	1.12%

FLORIDA DEMOGRAPHIC ESTIMATING CONFERENCE

Held October 18, 2006

FISCAL YEAR AVERAGE

	<u>2005-1</u>	<u>2005-2</u>	<u>2005-3</u>	<u>2005-4</u>	<u>2006-1</u>	<u>2006-2</u>	<u>2006-3</u>	<u>2006-4</u>	<u>2007-1</u>	<u>2007-2</u>	<u>2007-3</u>	<u>2007-4</u>	<u>2008-1</u>	<u>2008-2</u>	<u>2003-04</u>	<u>2004-05</u>	<u>2005-06</u>	<u>2006-07</u>	<u>2007-08</u>
Population																			
FDEC, 02/2006	17,869.3	17,967.0	18,067.2	18,169.4	18,272.5	18,376.7	18,480.4	18,583.9	18,686.7	18,788.8	18,890.1	18,990.6	19,090.4	19,189.5	17,405.7	17,820.1	18,221.5	18,635.0	19,040.1
FDEC, 10/2006	17,869.3	17,970.8	18,077.4	18,185.9	18,294.3	18,400.6	18,500.6	18,600.2	18,698.6	18,797.3	18,897.1	18,997.4	19,098.6	19,200.7	17,405.7	17,821.0	18,239.6	18,649.2	19,048.5
Growth Rate																			
FDEC, 02/2006	2.21	2.21	2.25	2.28	2.29	2.30	2.28	2.26	2.23	2.20	2.17	2.15	2.12	2.09	2.58	2.38	2.25	2.27	2.17
FDEC, 10/2006	2.21	2.29	2.39	2.42	2.41	2.34	2.19	2.17	2.13	2.13	2.14	2.14	2.15	2.16	2.58	2.39	2.35	2.25	2.14
Net Change in Population																			
FDEC, 02/2006	97.4	97.8	100.1	102.3	103.1	104.1	103.7	103.5	102.8	102.1	101.3	100.5	99.8	99.2	444.9	397.0	409.6	412.1	400.7
FDEC, 10/2006	97.4	101.5	106.6	108.5	108.4	106.3	100.0	99.5	98.4	98.8	99.7	100.4	101.2	102.1	444.9	400.8	429.8	396.7	403.4
Households																			
FDEC, 02/2006	7,089.7	7,128.8	7,168.5	7,209.2	7,250.2	7,291.9	7,333.6	7,375.3	7,416.8	7,457.9	7,498.6	7,539.0	7,579.0	7,618.7	6,907.2	7,069.9	7,229.9	7,395.9	7,558.8
FDEC, 10/2006	7,089.7	7,131.1	7,173.9	7,217.0	7,259.8	7,302.0	7,342.0	7,382.2	7,422.3	7,462.4	7,502.6	7,542.9	7,583.2	7,623.8	6,907.2	7,070.5	7,238.2	7,402.2	7,563.1
Growth Rate																			
FDEC, 02/2006	2.24	2.22	2.25	2.29	2.30	2.32	2.31	2.29	2.27	2.24	2.20	2.17	2.14	2.11	2.51	2.36	2.26	2.30	2.20
FDEC, 10/2006	2.24	2.36	2.42	2.43	2.40	2.34	2.21	2.21	2.19	2.18	2.17	2.16	2.16	2.16	2.51	2.37	2.37	2.27	2.17
Net Change in Households																			
FDEC, 02/2006	39.1	39.1	39.8	40.7	41.1	41.7	41.7	41.7	41.5	41.1	40.7	40.4	40.0	39.7	170.8	158.3	163.1	166.0	160.8
FDEC, 10/2006	39.1	41.5	42.7	43.1	42.8	42.1	40.1	40.2	40.0	40.1	40.2	40.3	40.3	40.6	170.8	160.6	170.8	160.4	161.4
Household Size																			
FDEC, 02/2006	2.520	2.520	2.520	2.520	2.520	2.520	2.520	2.520	2.520	2.519	2.519	2.519	2.519	2.519	2.520	2.521	2.520	2.520	2.519
FDEC, 10/2006	2.520	2.520	2.520	2.520	2.520	2.520	2.520	2.520	2.519	2.519	2.519	2.519	2.519	2.519	2.520	2.520	2.520	2.519	2.519
Growth Rate																			
FDEC, 02/2006	-0.03	-0.02	0.00	0.00	-0.01	-0.02	-0.03	-0.04	-0.04	-0.03	-0.03	-0.02	-0.02	-0.02	0.06	0.02	-0.01	-0.03	-0.03
FDEC, 10/2006	-0.03	-0.07	-0.02	0.00	0.01	0.00	-0.02	-0.04	-0.05	-0.05	-0.03	-0.02	-0.01	0.00	0.06	0.02	-0.02	-0.02	-0.03
Net Migration																			
FDEC, 02/2006	83.4	83.8	86.2	88.3	89.1	90.1	89.7	89.5	88.8	88.1	87.2	86.5	85.8	85.1	396.8	341.6	353.7	356.1	344.7
FDEC, 10/2006	84.1	87.8	92.7	94.6	94.3	92.0	85.6	85.0	83.8	84.1	85.0	85.7	86.6	87.5	399.3	348.5	373.6	338.5	344.8
Births																			
FDEC, 02/2006	55.0	55.2	55.4	55.6	55.9	56.1	56.4	56.7	56.9	57.2	57.5	57.7	58.0	58.3	214.5	219.3	223.0	227.2	231.5
FDEC, 10/2006	55.6	56.2	56.6	56.8	57.0	57.3	57.6	57.8	58.1	58.4	58.6	58.9	59.1	59.4	214.0	221.3	227.7	231.9	236.1
Deaths																			
FDEC, 02/2006	41.0	41.2	41.4	41.6	41.9	42.1	42.4	42.7	42.9	43.2	43.5	43.7	44.0	44.3	166.4	163.9	167.1	171.2	175.4
FDEC, 10/2006	42.3	42.5	42.7	42.9	43.0	43.1	43.2	43.3	43.5	43.7	43.9	44.2	44.5	44.9	168.4	169.0	171.6	173.6	177.5
Net Natural Increase																			
FDEC, 02/2006	14.0	14.0	14.0	14.0	14.0	14.0	14.0	14.0	14.0	14.0	14.0	14.0	14.0	14.0	48.1	55.4	55.9	56.0	56.1
FDEC, 10/2006	13.3	13.7	13.9	13.9	14.1	14.3	14.4	14.6	14.6	14.7	14.7	14.7	14.6	14.6	45.6	52.3	56.2	58.3	58.6

FLORIDA DEMOGRAPHIC ESTIMATING CONFERENCE

Held October 18, 2006

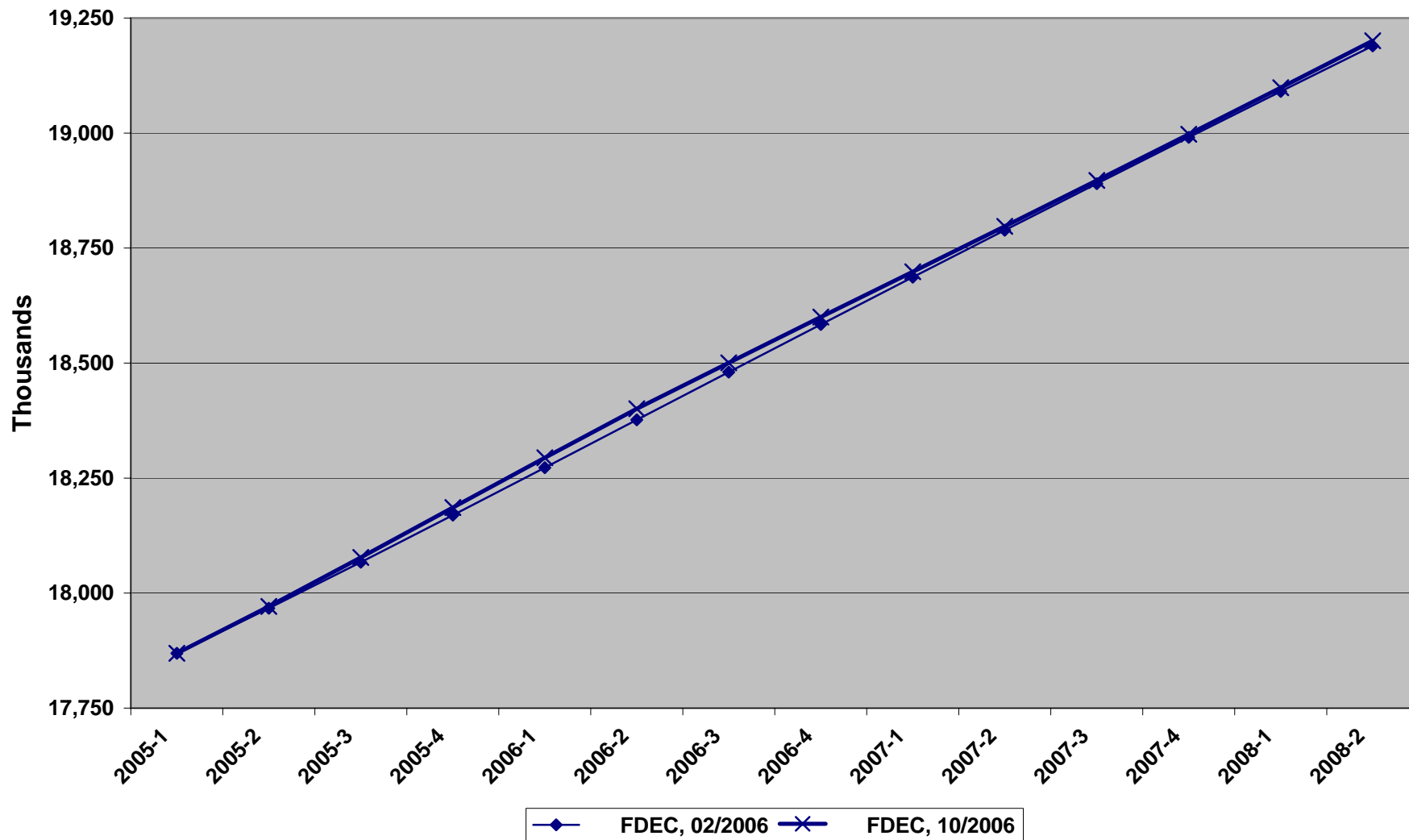
	<u>2000-01</u>	<u>2001-02</u>	<u>2002-03</u>	<u>2003-04</u>	<u>2004-05</u>	<u>2005-06</u>	<u>2006-07</u>	<u>2007-08</u>	<u>2008-09</u>	<u>2009-10</u>	<u>2010-11</u>	<u>2011-12</u>	<u>2012-13</u>	<u>2013-14</u>	<u>2014-15</u>	<u>2015-16</u>
Population																
FDEC, 02/2006	16,246.6	16,586.6	16,968.2	17,405.7	17,820.1	18,221.5	18,635.0	19,040.1	19,434.9	19,823.6	20,207.9	20,585.0	20,955.6	21,320.5	21,678.8	22,032.2
FDEC, 10/2006	16,246.6	16,586.6	16,968.2	17,405.7	17,821.0	18,239.6	18,649.2	19,048.5	19,458.9	19,871.3	20,269.8	20,650.2	21,020.9	21,384.7	21,742.6	22,096.3
Growth Rate																
FDEC, 02/2006	2.29	2.09	2.30	2.58	2.38	2.25	2.27	2.17	2.07	2.00	1.94	1.87	1.80	1.74	1.68	1.63
FDEC, 10/2006	2.29	2.09	2.30	2.58	2.39	2.35	2.25	2.14	2.15	2.12	2.01	1.88	1.80	1.73	1.67	1.63
Net Change in Population																
FDEC, 02/2006	341.1	348.4	405.2	444.9	397.0	409.6	412.1	400.7	391.7	387.3	382.0	374.2	368.5	362.6	355.8	352.2
FDEC, 10/2006	341.1	348.4	405.2	444.9	400.8	429.8	396.7	403.4	413.5	410.1	390.2	375.9	367.9	361.4	356.0	352.6
Households																
FDEC, 02/2006	6,447.8	6,585.8	6,737.8	6,907.2	7,069.9	7,229.9	7,395.9	7,558.8	7,717.0	7,872.6	8,026.1	8,176.6	8,324.3	8,469.6	8,612.3	8,753.1
FDEC, 10/2006	6,447.8	6,585.8	6,737.8	6,907.2	7,070.5	7,238.2	7,402.2	7,563.1	7,726.7	7,891.3	8,050.2	8,201.7	8,349.2	8,493.8	8,636.0	8,776.6
Growth Rate																
FDEC, 02/2006	2.36	2.14	2.31	2.51	2.36	2.26	2.30	2.20	2.09	2.02	1.95	1.87	1.81	1.75	1.68	1.63
FDEC, 10/2006	2.36	2.14	2.31	2.51	2.37	2.37	2.27	2.17	2.16	2.13	2.01	1.88	1.80	1.73	1.67	1.63
Net Change in Households																
FDEC, 02/2006	143.1	138.5	161.1	170.8	158.3	163.1	166.0	160.8	157.0	154.8	152.5	149.3	146.8	144.4	141.7	140.3
FDEC, 10/2006	143.1	138.5	161.1	170.8	160.6	170.8	160.4	161.4	164.9	163.7	155.5	149.7	146.3	143.6	141.5	140.2
Household Size																
FDEC, 02/2006	2.520	2.519	2.518	2.520	2.521	2.520	2.520	2.519	2.518	2.518	2.518	2.518	2.517	2.517	2.517	2.517
FDEC, 10/2006	2.520	2.519	2.518	2.520	2.520	2.520	2.519	2.519	2.518	2.518	2.518	2.518	2.518	2.518	2.518	2.518
Growth Rate																
FDEC, 02/2006	-0.06	-0.05	-0.01	0.06	0.02	-0.01	-0.03	-0.03	-0.02	-0.02	-0.01	-0.01	-0.01	0.00	0.00	0.00
FDEC, 10/2006	-0.06	-0.05	-0.01	0.06	0.02	-0.02	-0.02	-0.03	-0.01	-0.01	-0.01	0.00	0.00	0.00	0.00	0.00
Net Migration																
FDEC, 02/2006	300.2	310.9	365.9	396.8	341.6	353.7	356.1	344.7	335.5	331.0	326.0	318.8	314.0	309.3	304.1	302.8
FDEC, 10/2006	300.1	311.1	365.3	399.3	348.5	373.6	338.5	344.8	356.2	354.9	337.0	323.8	317.2	312.3	308.7	307.4
Births																
FDEC, 02/2006	205.9	205.2	207.8	214.5	219.3	223.0	227.2	231.5	235.9	240.4	244.6	248.6	252.5	256.1	259.6	262.7
FDEC, 10/2006	205.9	205.1	208.0	214.0	221.3	227.7	231.9	236.1	240.5	245.1	249.8	254.4	258.8	263.1	267.2	271.0
Deaths																
FDEC, 02/2006	165.0	167.7	168.5	166.4	163.9	167.1	171.2	175.4	179.8	184.1	188.6	193.2	197.9	202.8	207.9	213.3
FDEC, 10/2006	164.9	167.9	168.0	168.4	169.0	171.6	173.6	177.5	183.2	190.0	196.6	202.3	208.1	214.0	219.9	225.8
Net Natural Increase																
FDEC, 02/2006	40.9	37.5	39.4	48.1	55.4	55.9	56.0	56.1	56.2	56.3	56.0	55.4	54.5	53.3	51.7	49.4
FDEC, 10/2006	41.0	37.3	40.0	45.6	52.3	56.2	58.3	58.6	57.3	55.2	53.2	52.1	50.7	49.1	47.3	45.2

FLORIDA DEMOGRAPHIC ESTIMATING CONFERENCE

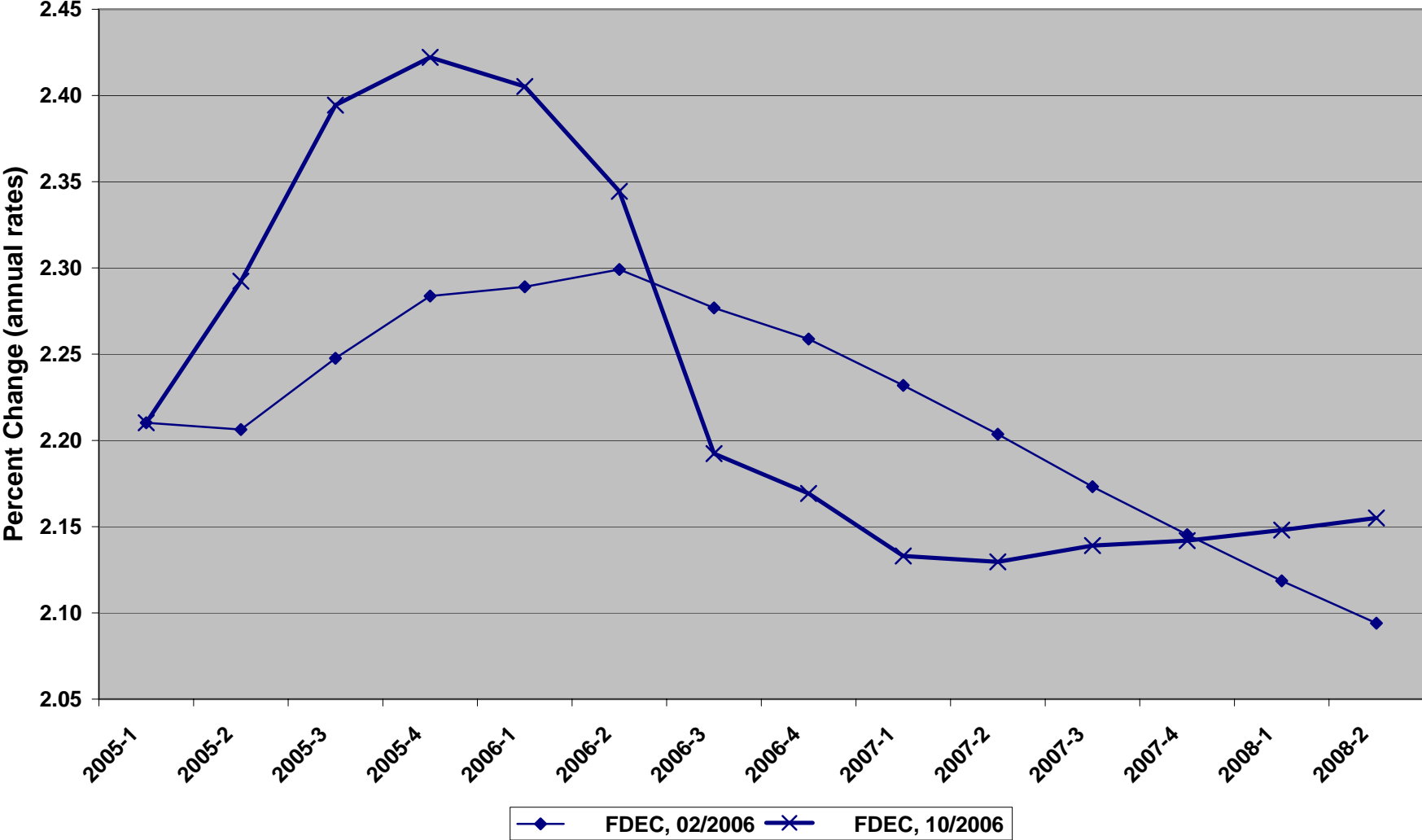
Charts

Held October 18, 2006

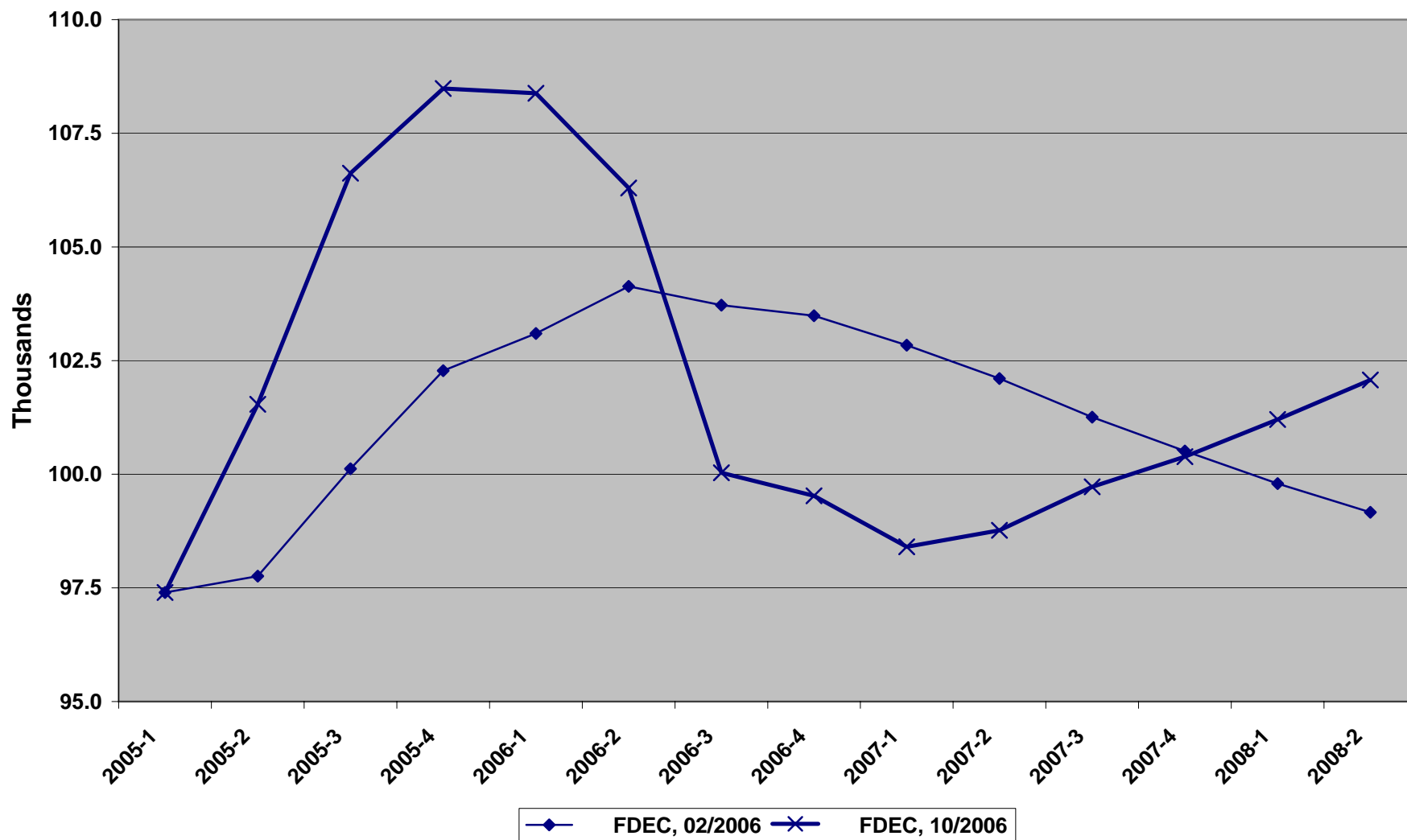
Florida Resident Population



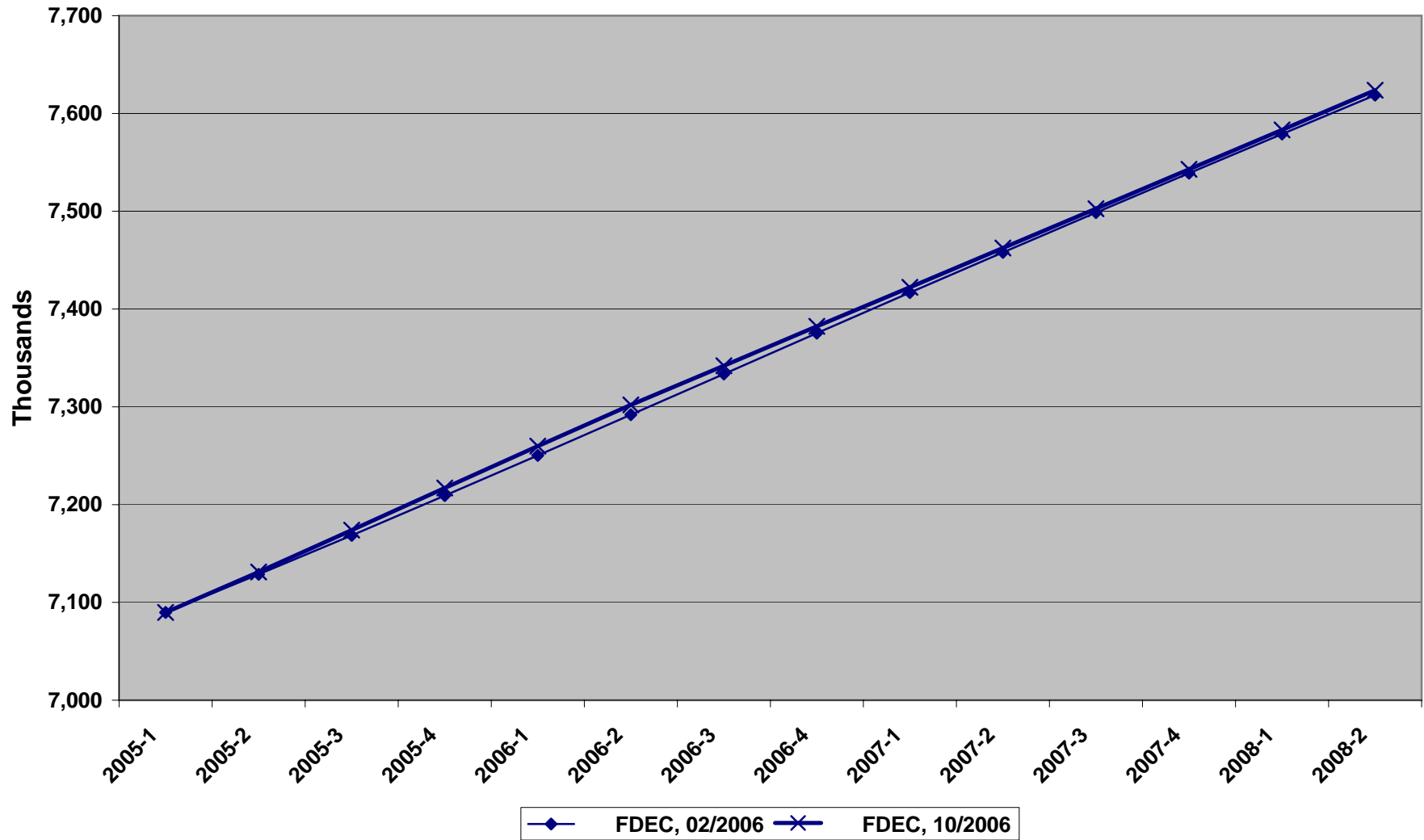
Growth In Florida Resident Population



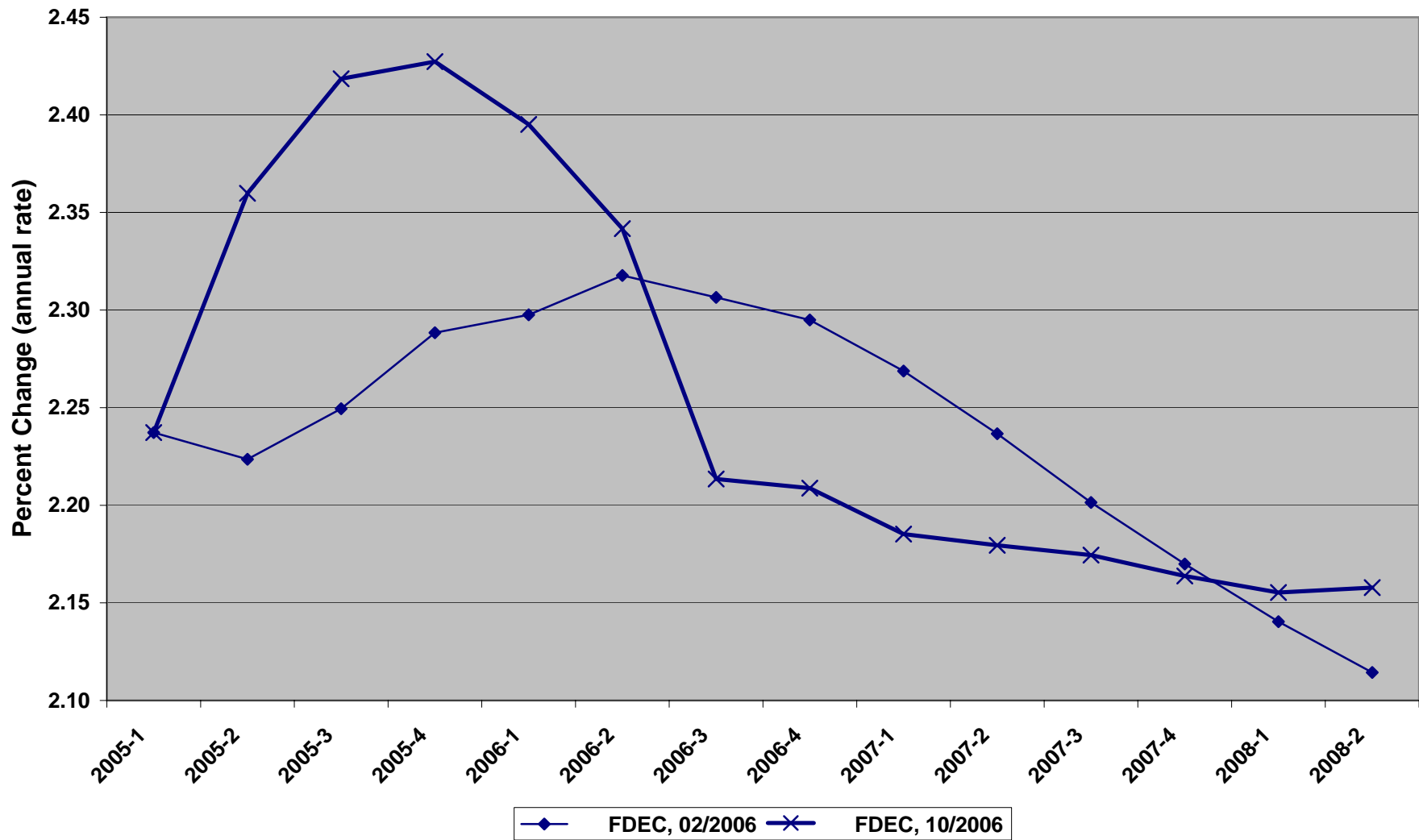
Net Change In Florida Resident Population



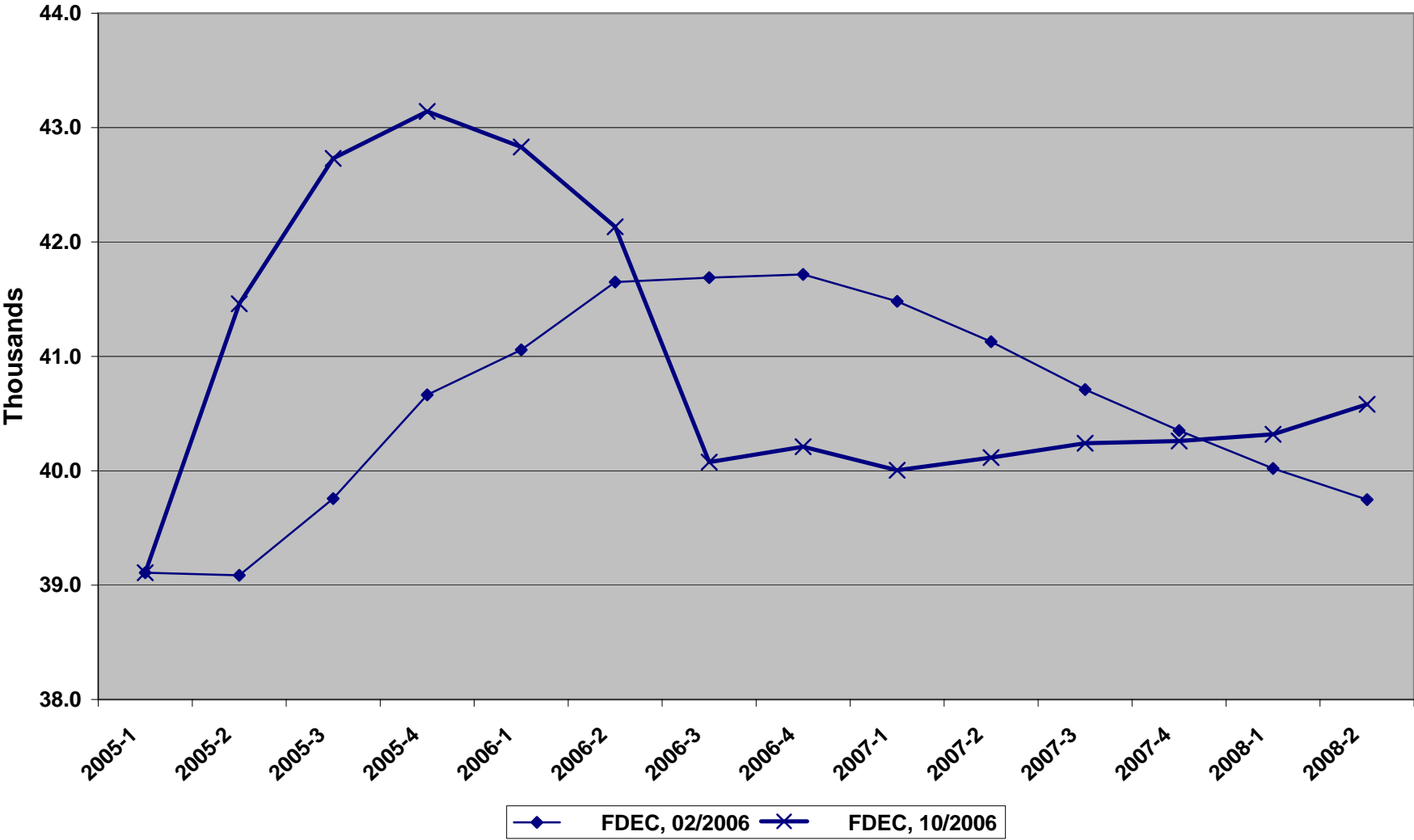
Florida Resident Households



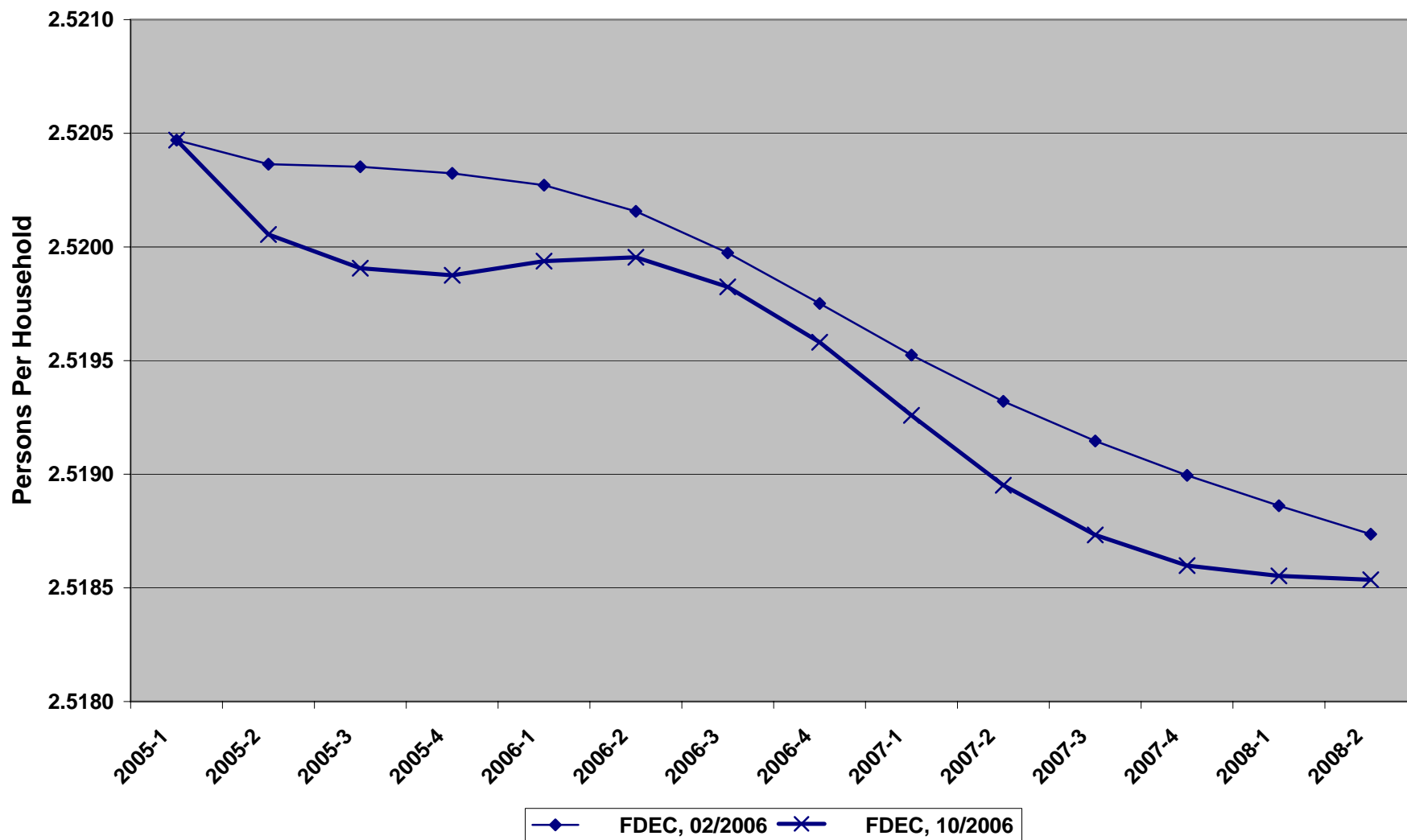
Growth In Florida Resident Households



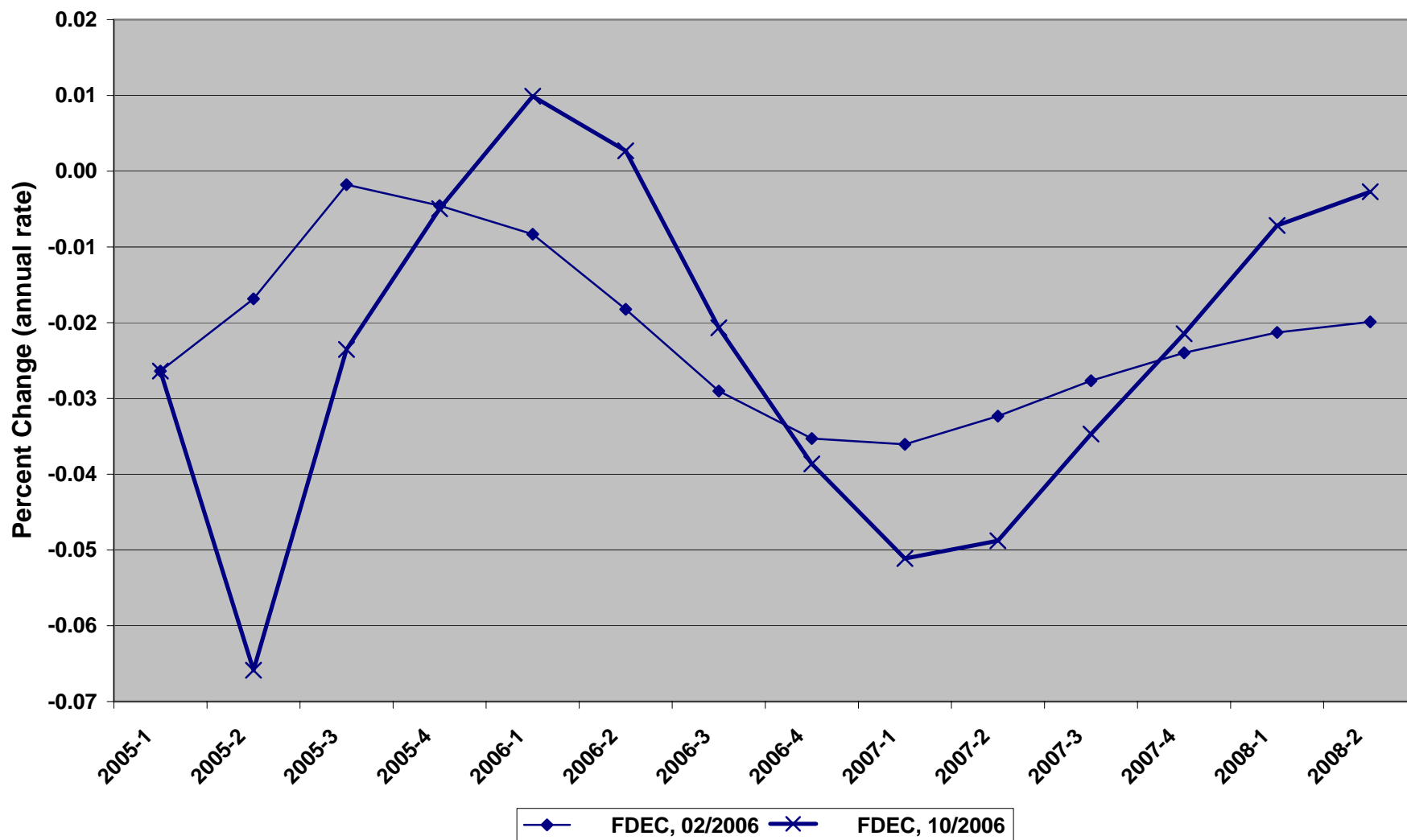
Net Change In Florida Resident Households



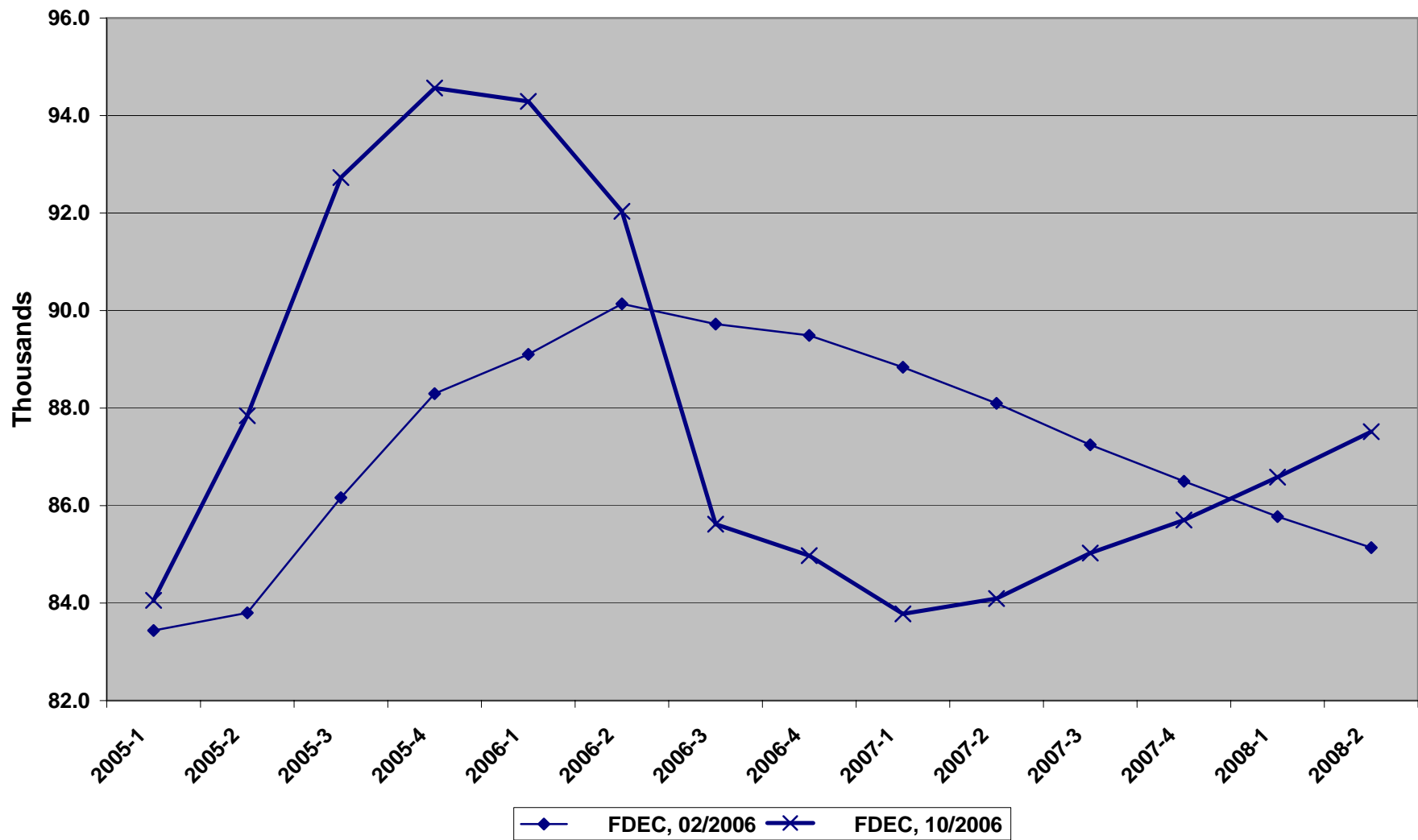
Florida Average Household Size



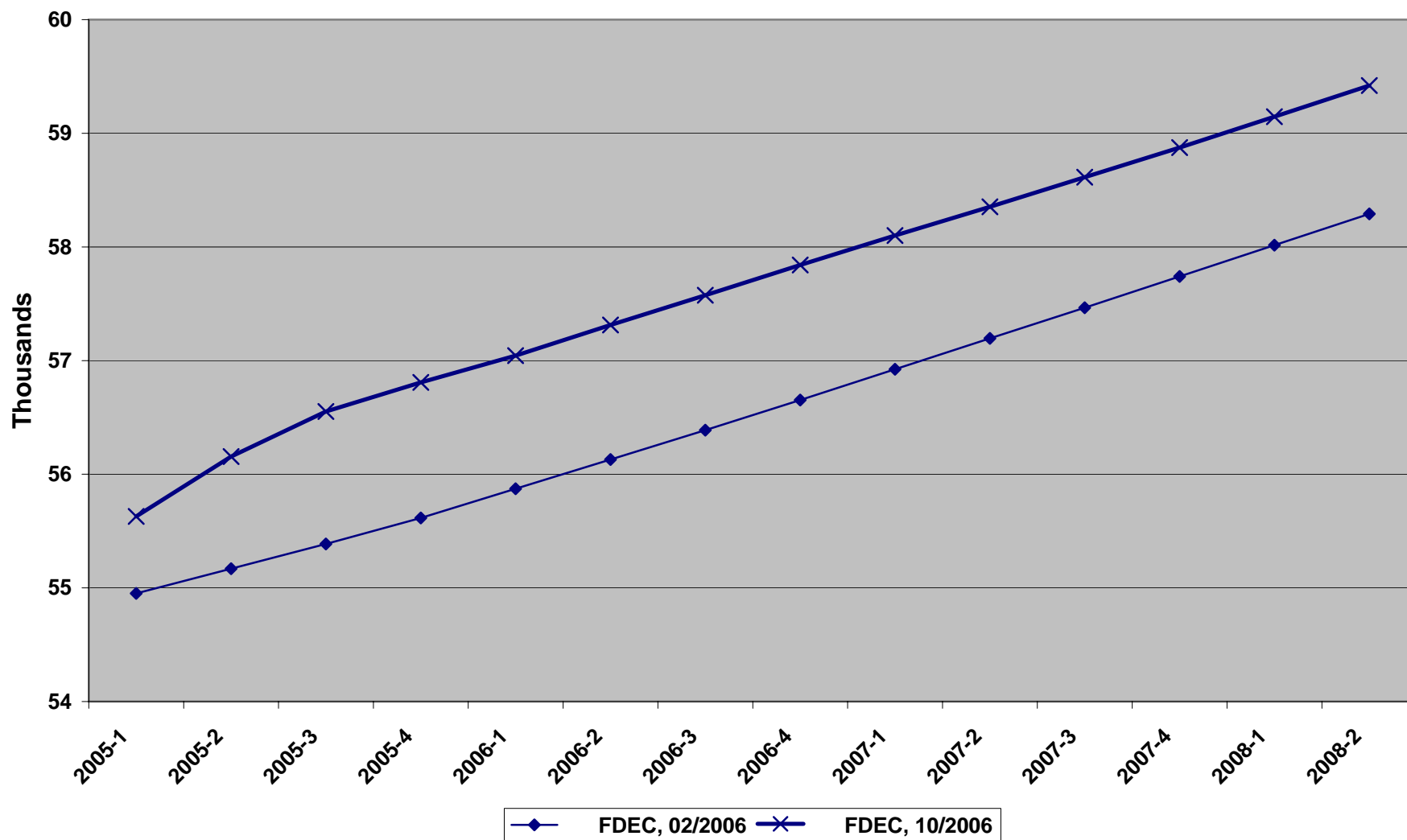
Growth In Florida Household Size



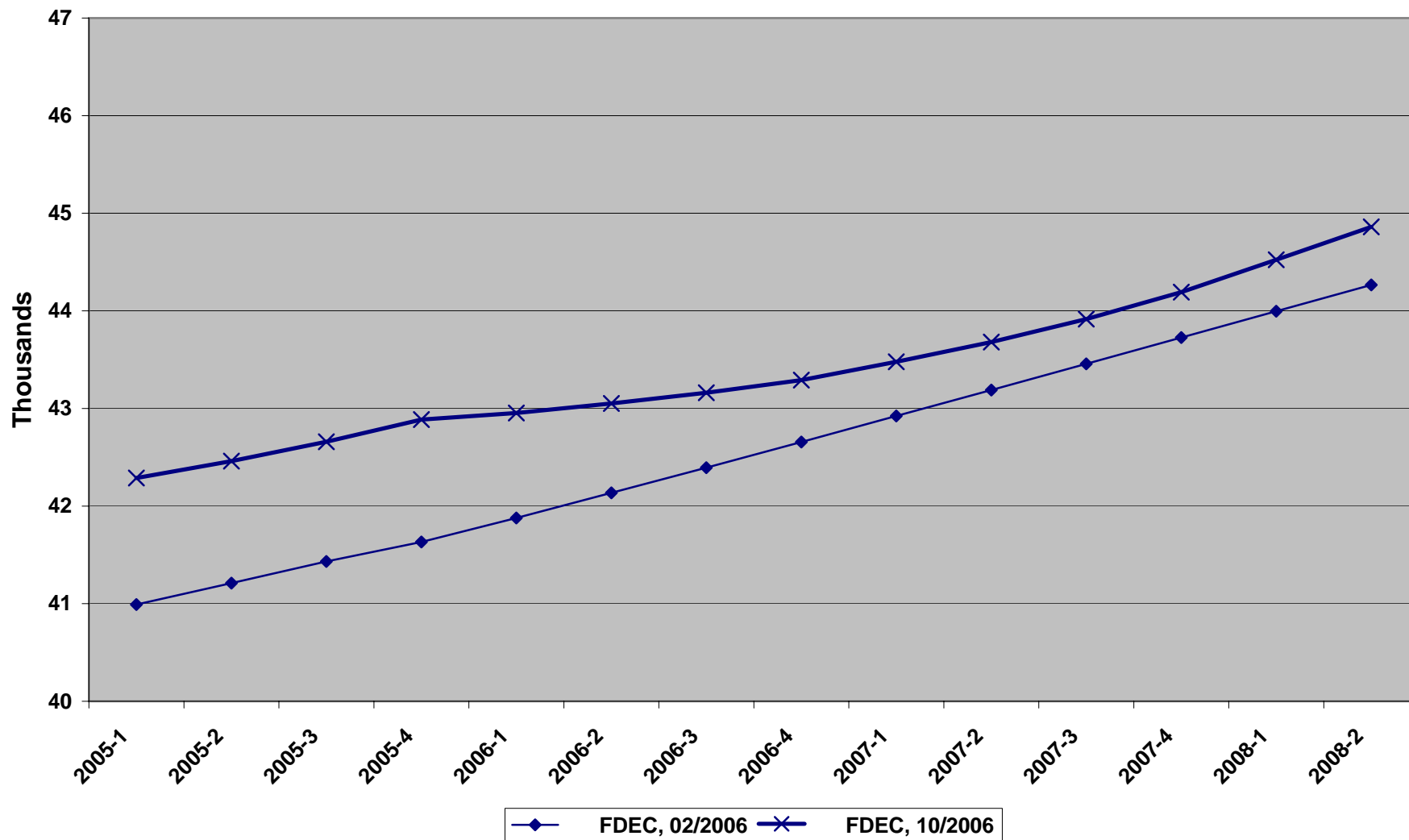
Florida Net Migration



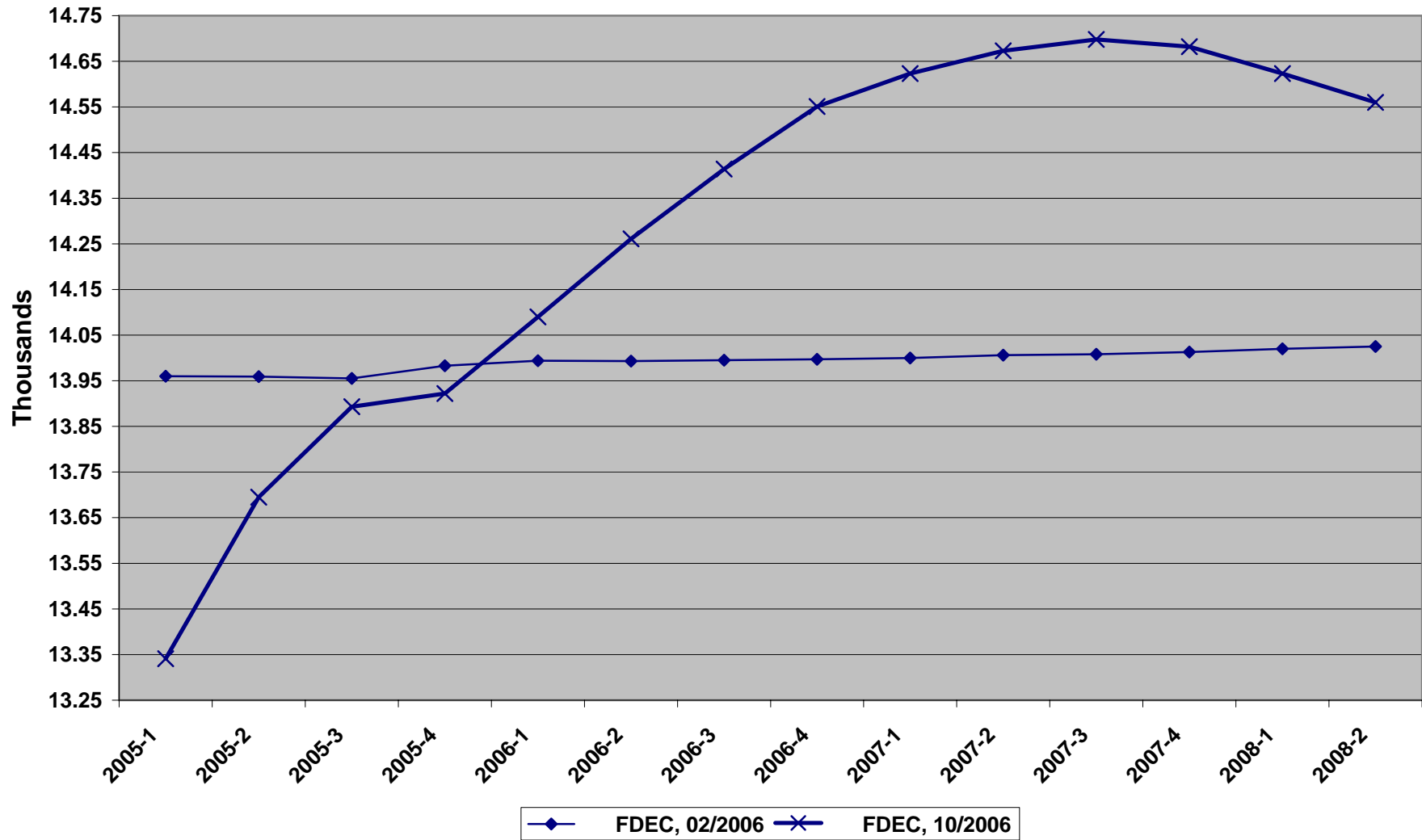
Florida Resident Births



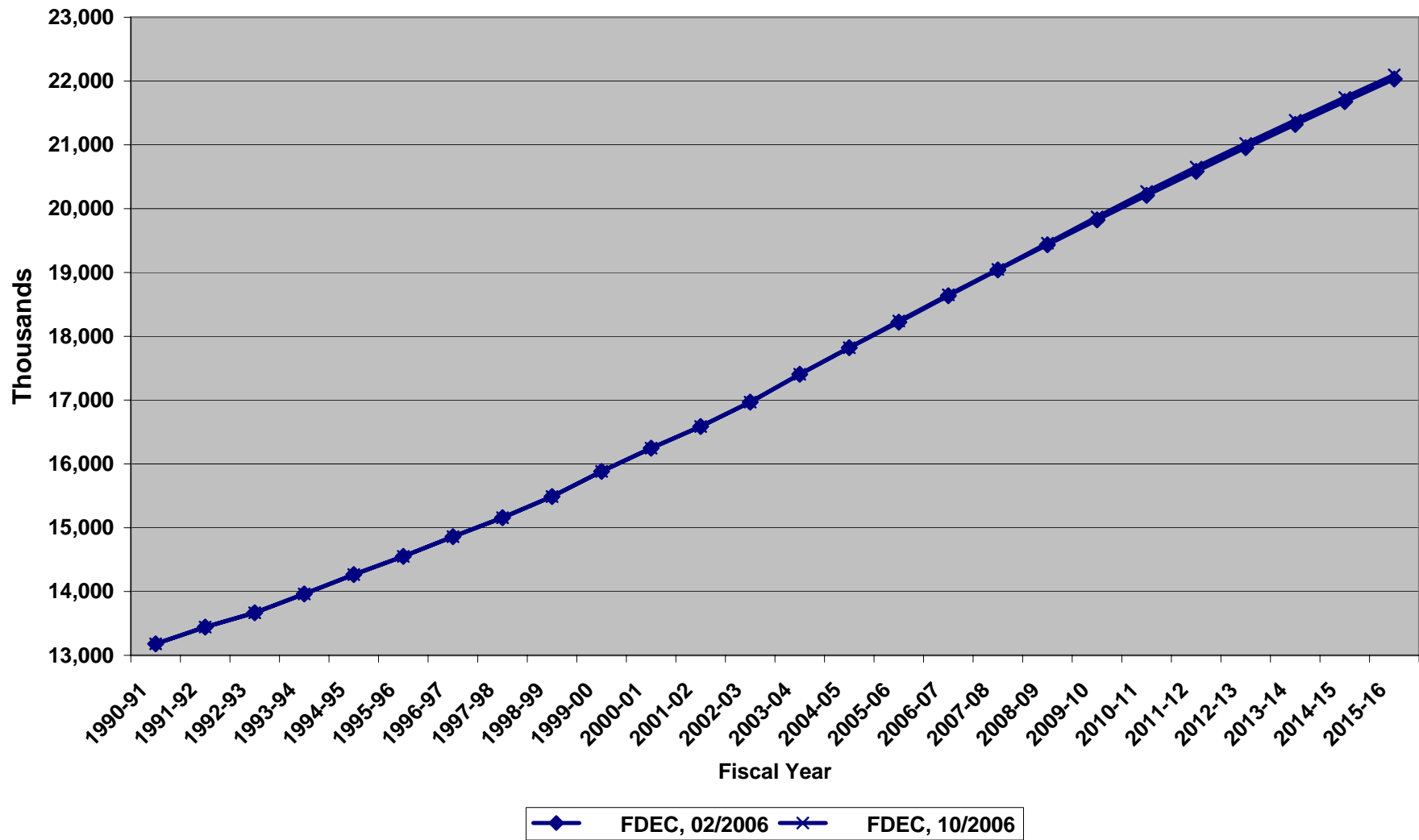
Florida Resident Deaths



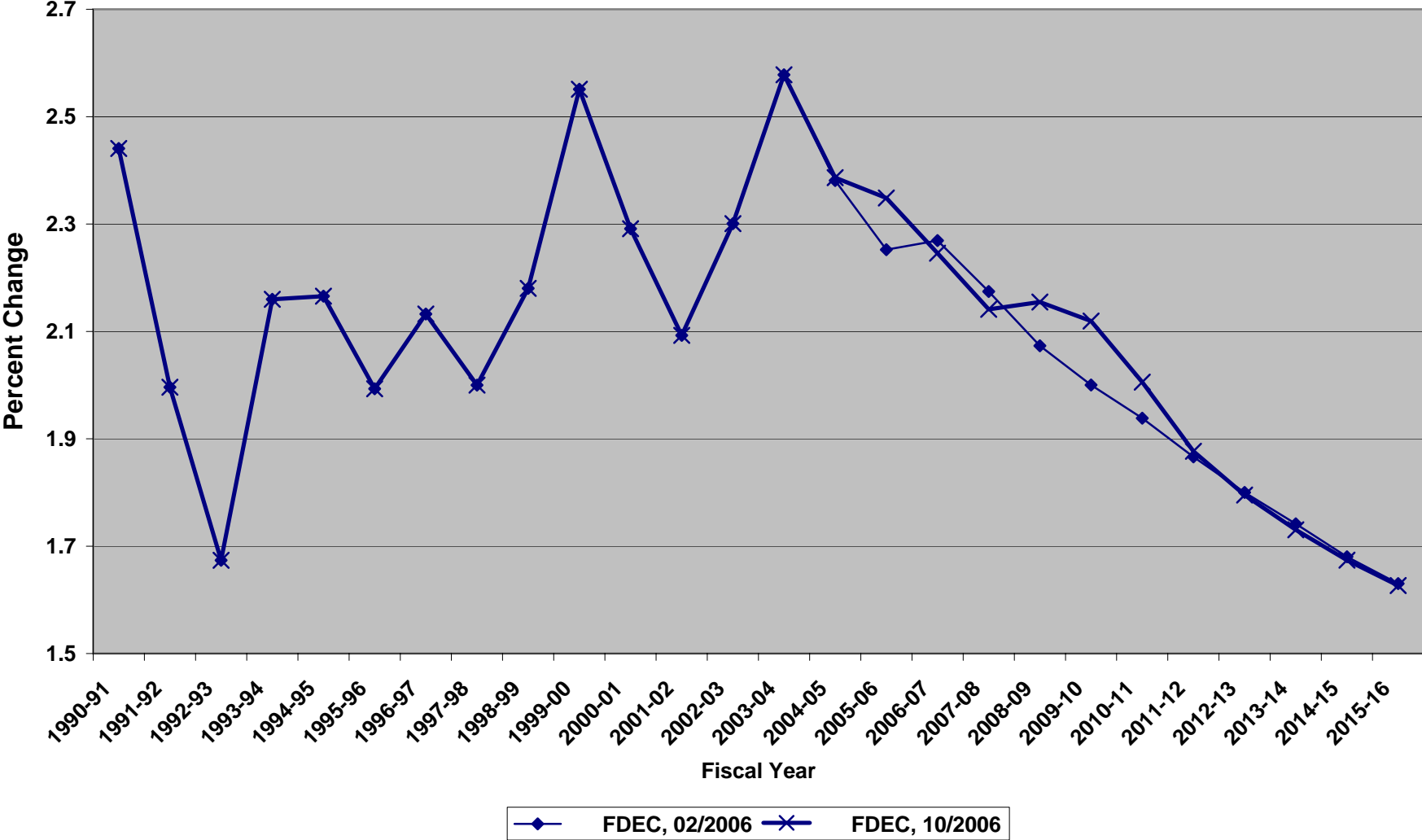
Florida Net Natural Increase



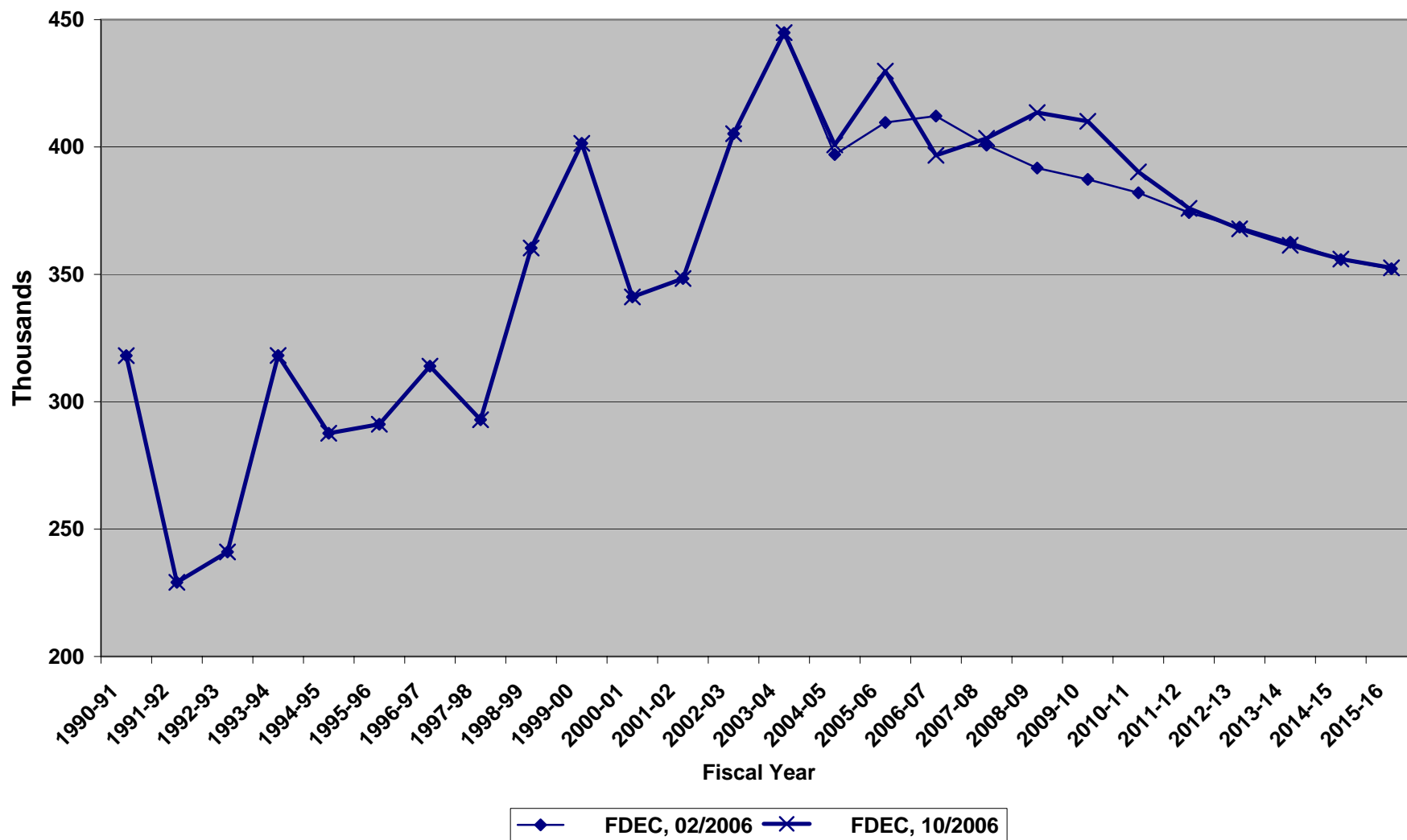
Florida Resident Population



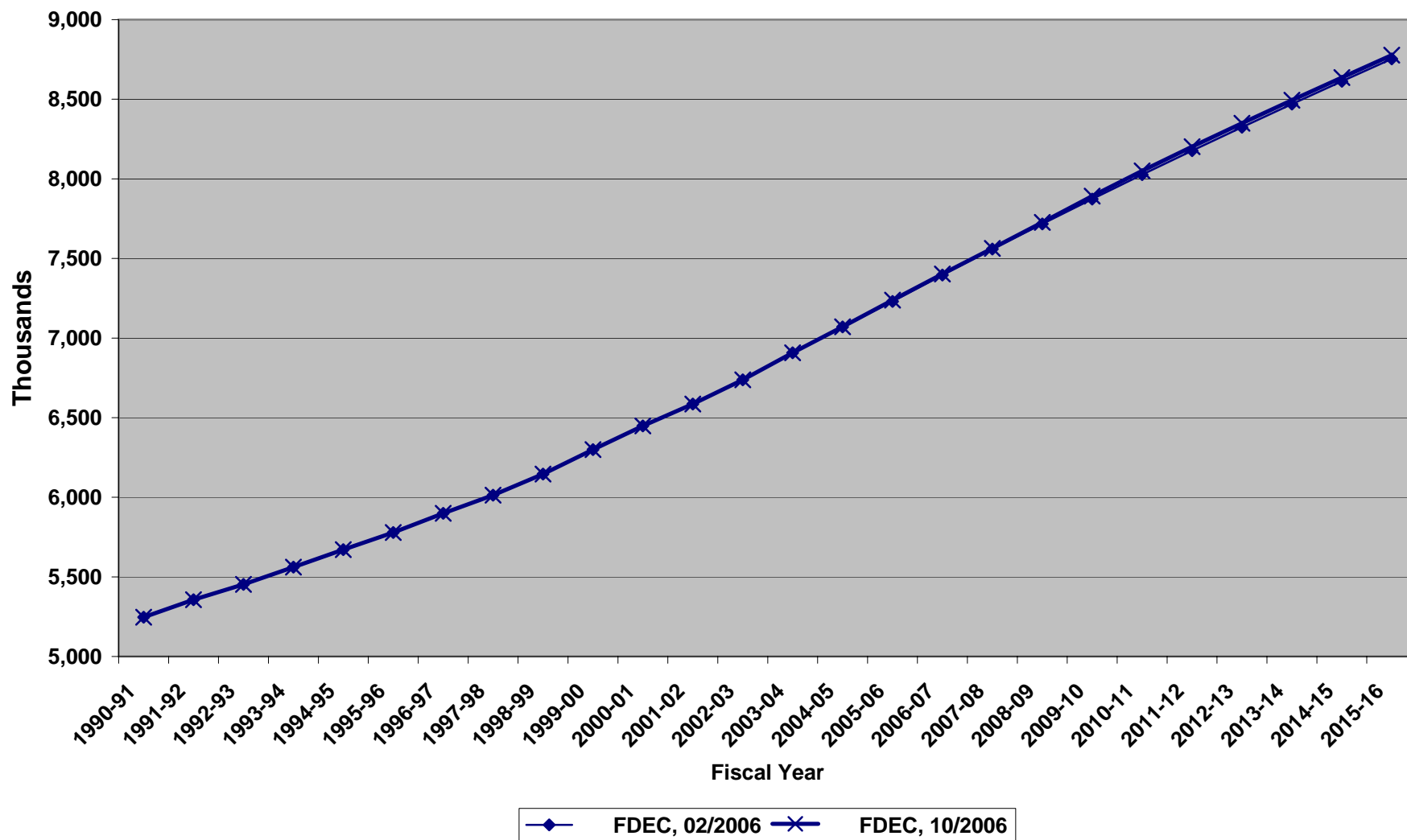
Growth In Florida Resident Population



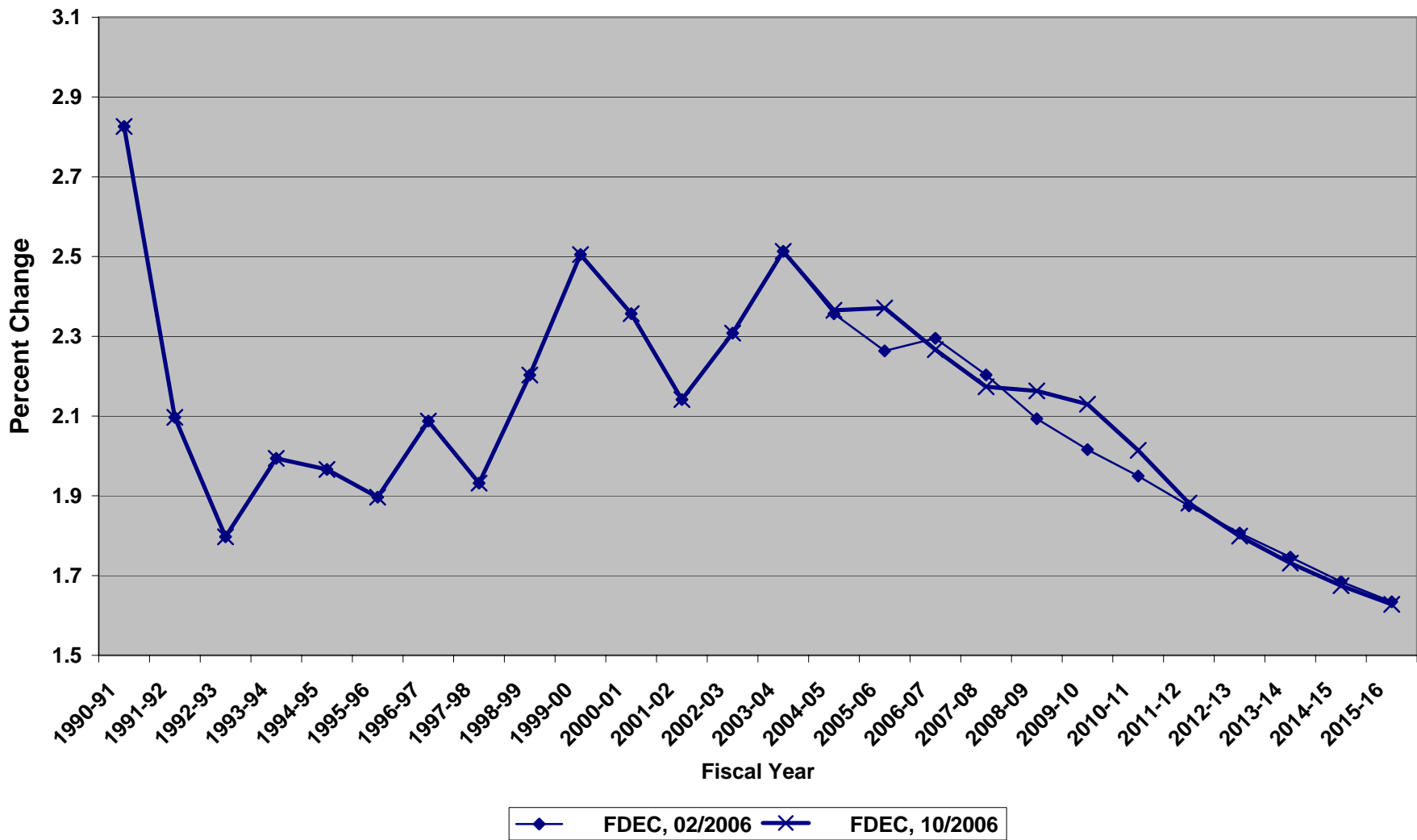
Net Change In Florida Resident Population



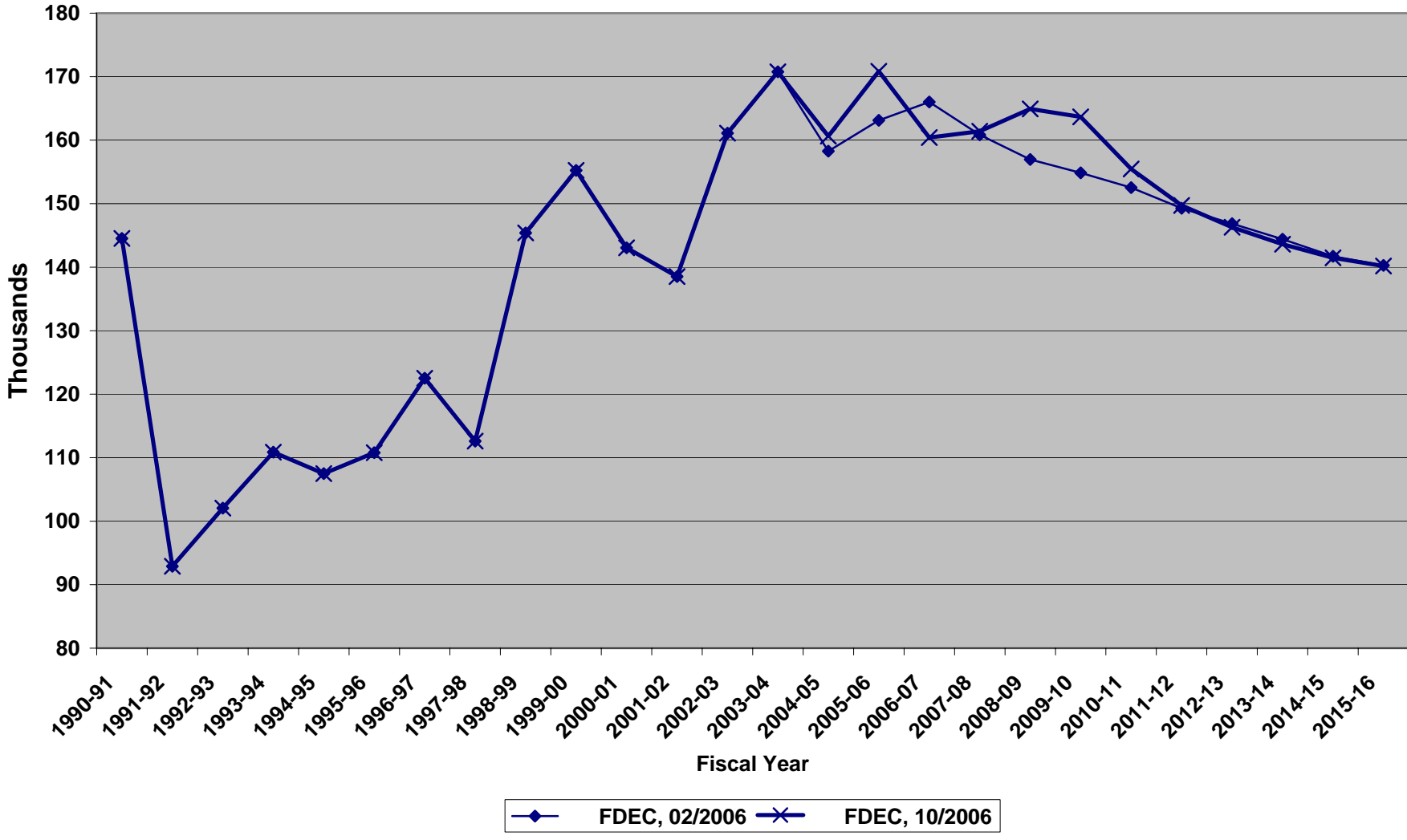
Florida Resident Households



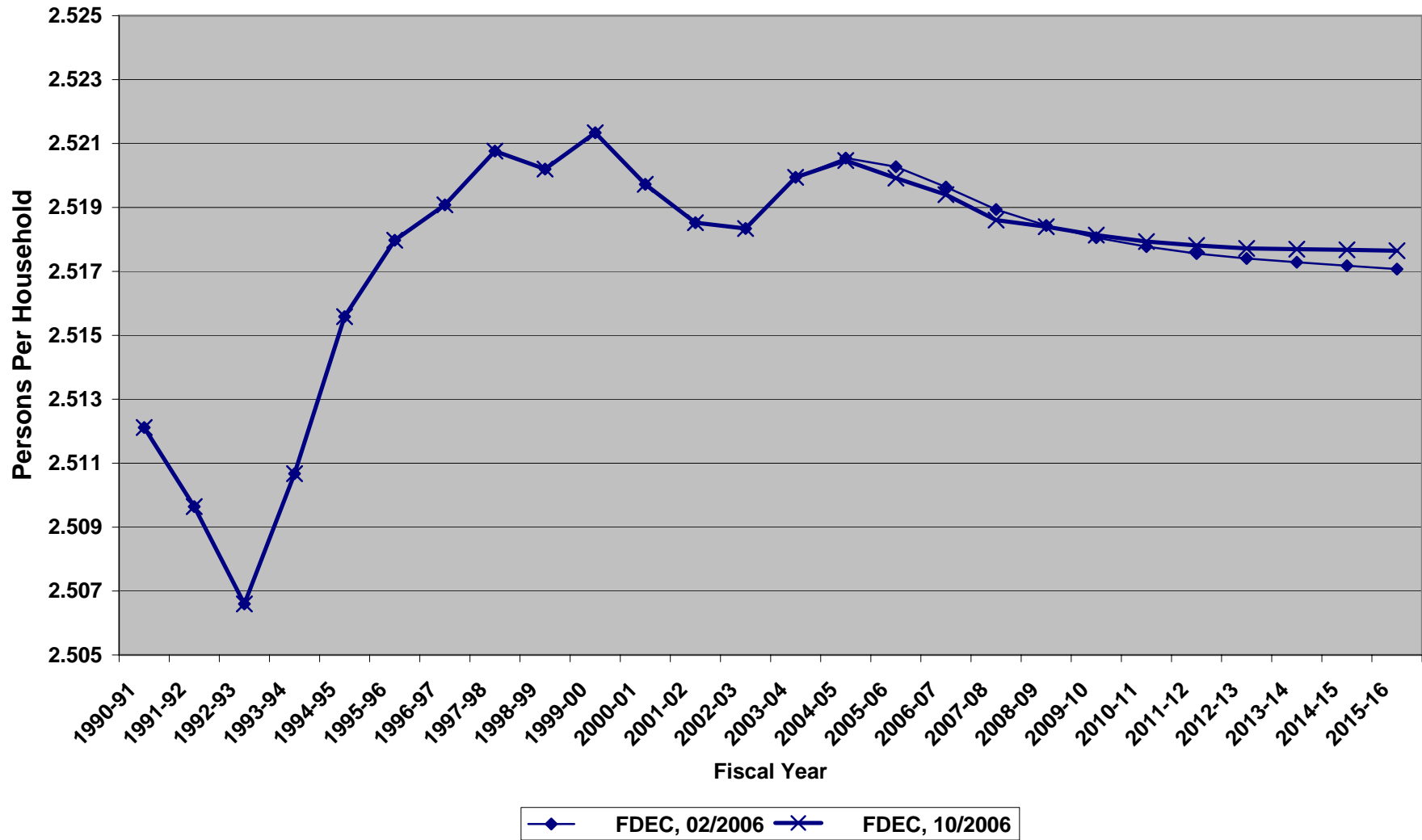
Growth In Florida Resident Households



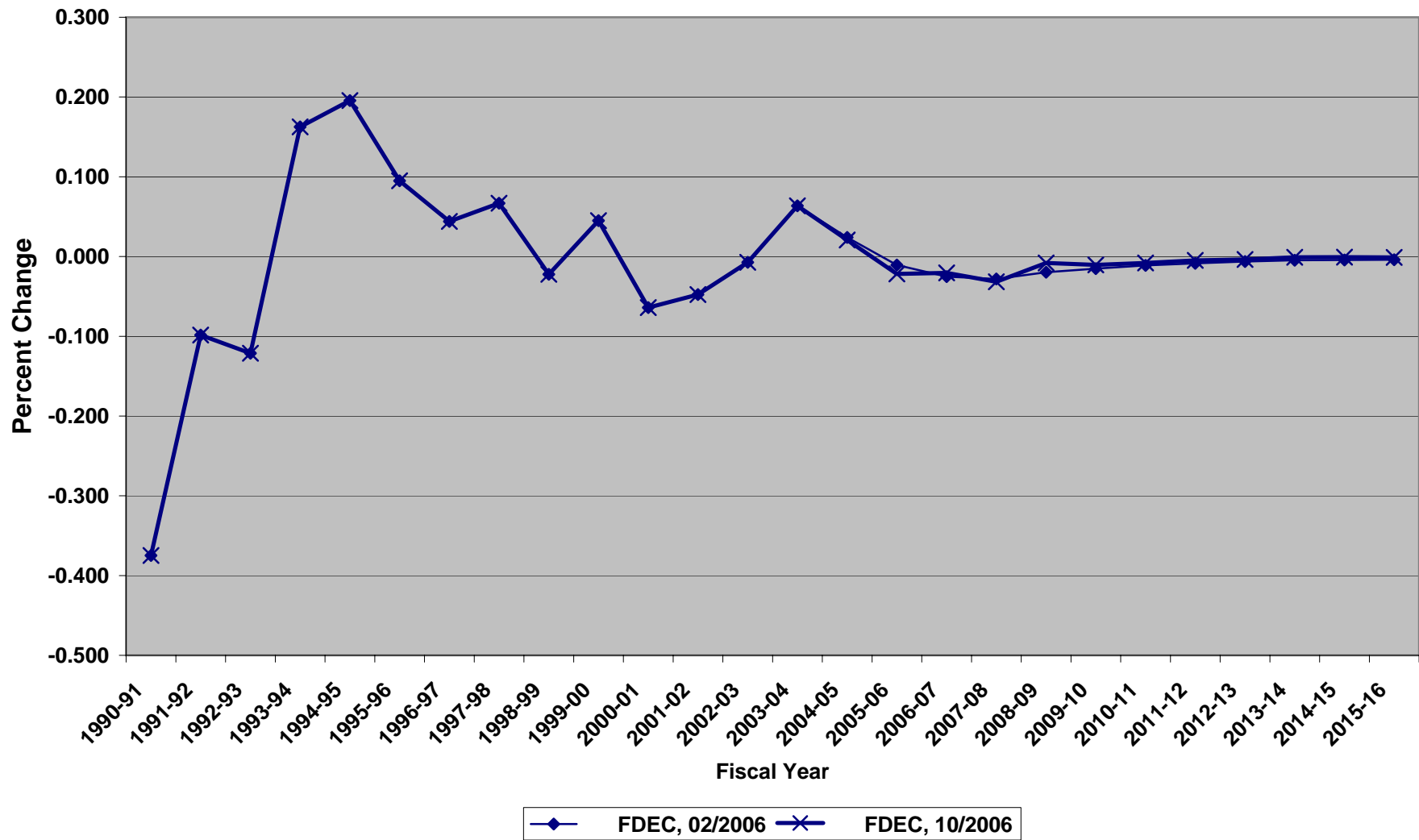
Net Change In Florida Resident Households



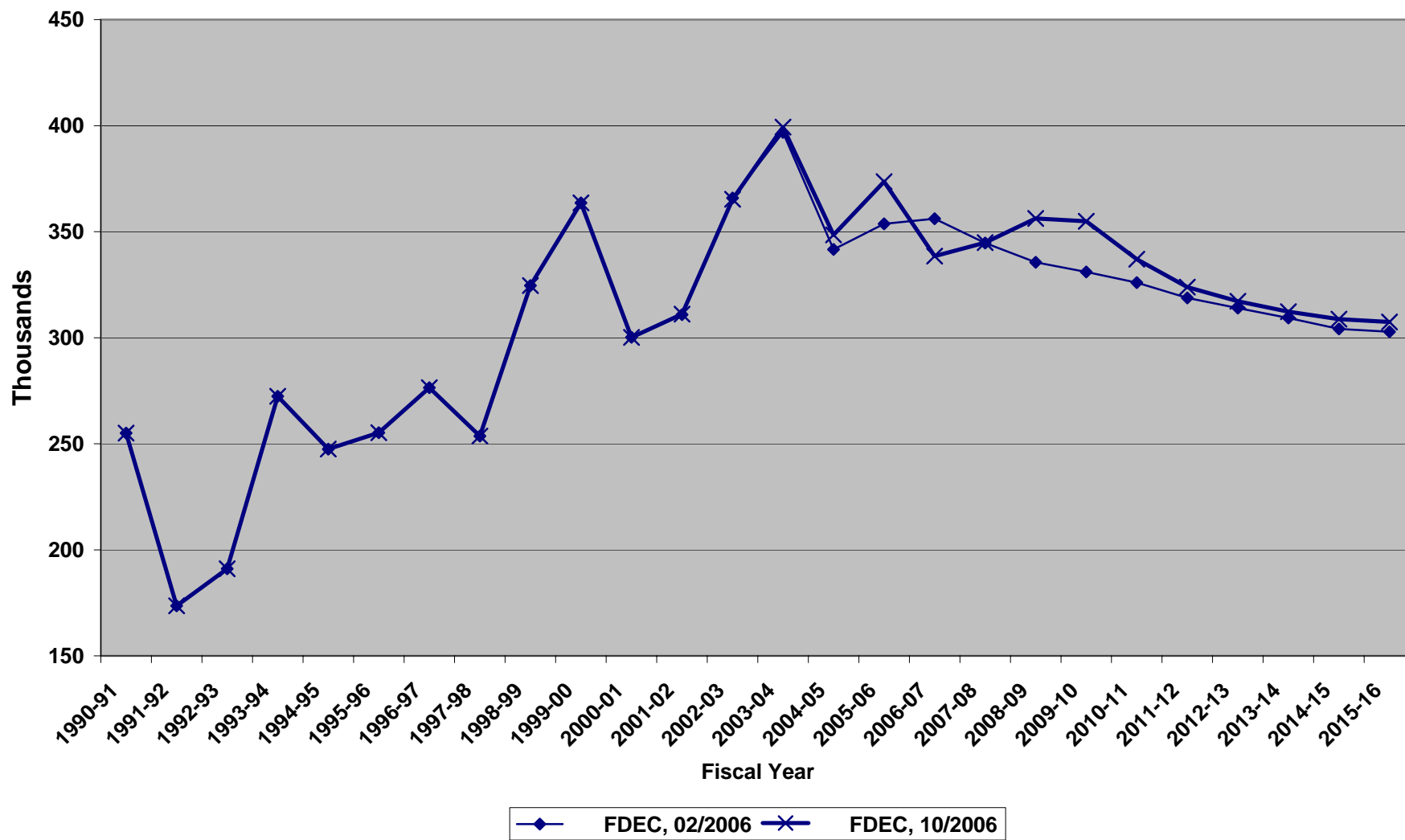
Average Florida Household Size



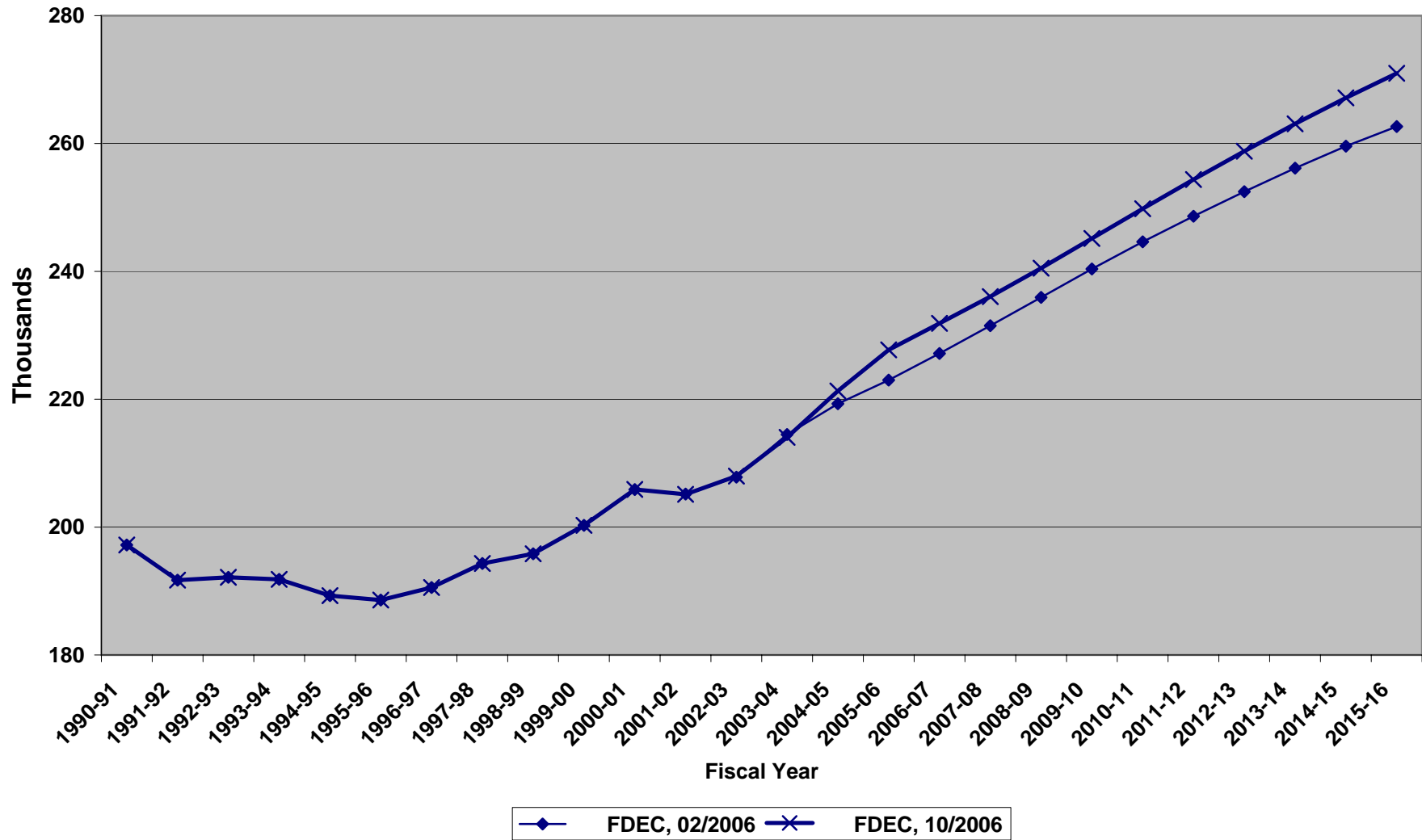
Growth In Average Florida Household Size



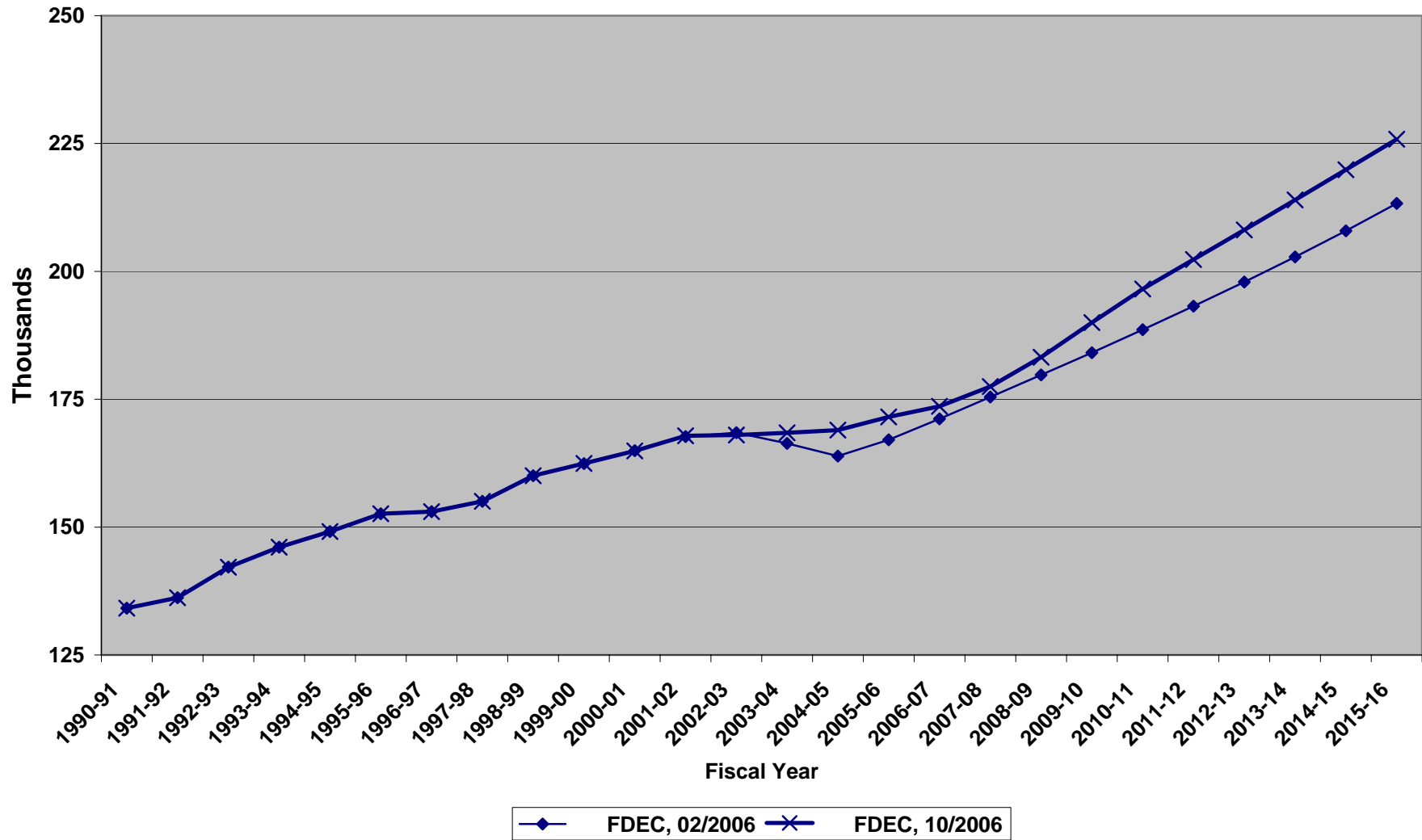
Florida Net Migration



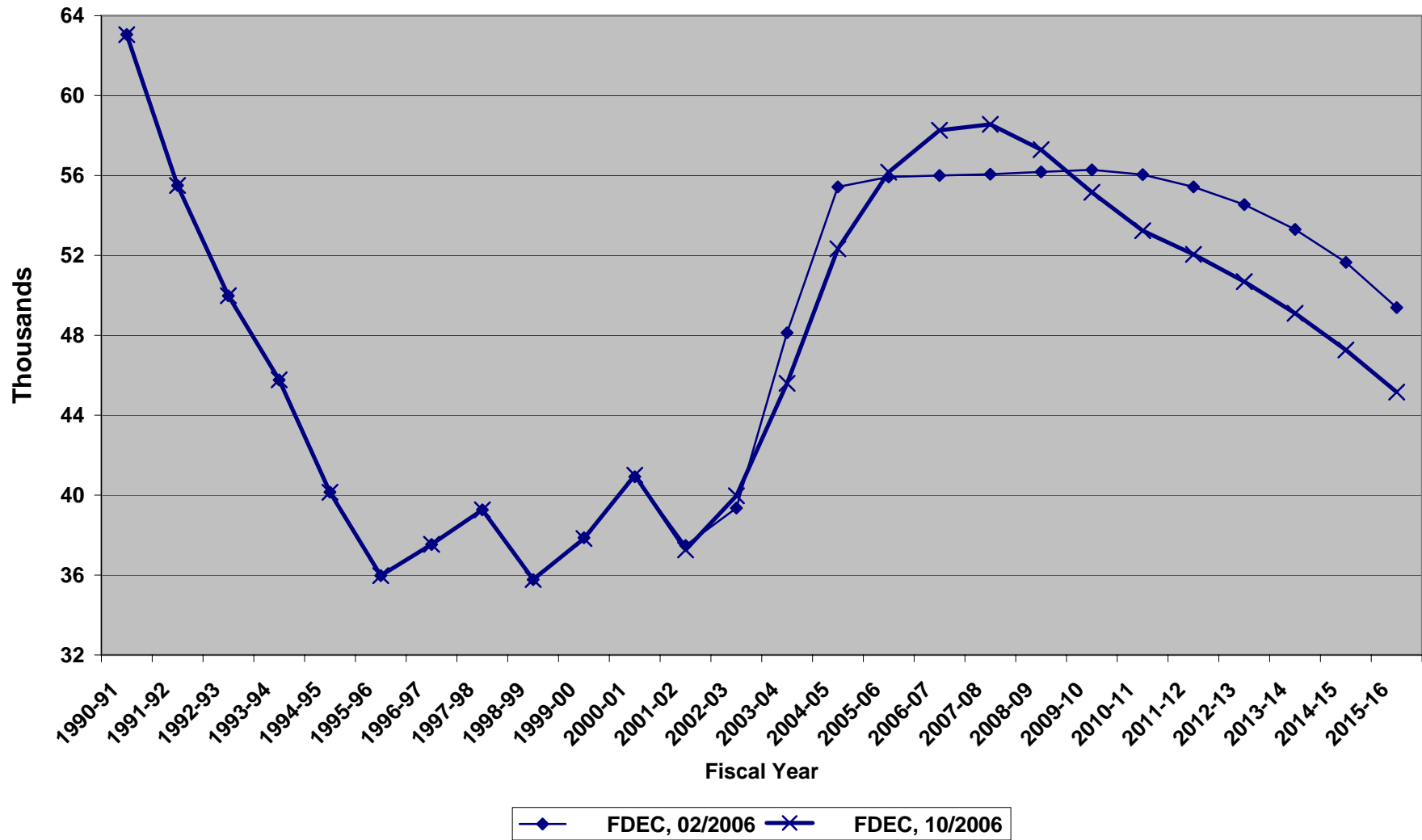
Florida Resident Live Births



Florida Resident Deaths



Florida Net Natural Increase



FLORIDA POPULATION AND COMPONENTS OF CHANGE

Fiscal Year	Population (end of FY)	Growth Rate	Annual Change in Population	Births	Deaths	Net Natural Increase	Net Migration
1950-51	2,980,135	6.07	170,545	67,604	27,186	40,418	130,127
1951-52	3,155,644	5.89	175,509	72,118	28,476	43,642	131,867
1952-53	3,312,485	4.97	156,841	77,156	29,856	47,300	109,541
1953-54	3,504,337	5.79	191,852	82,685	31,035	51,650	140,202
1954-55	3,747,378	6.94	243,041	86,265	32,083	54,182	188,859
1955-56	4,046,121	7.97	298,743	93,431	35,022	58,409	240,334
1956-57	4,369,885	8.00	323,764	100,811	38,319	62,492	261,272
1957-58	4,630,035	5.95	260,150	106,019	41,797	64,222	195,928
1958-59	4,813,142	3.95	183,107	110,457	43,746	66,711	116,396
1959-60	5,009,481	4.08	196,339	114,398	46,063	68,335	128,004
1960-61	5,241,204	4.63	231,723	116,419	48,302	68,117	163,606
1961-62	5,456,538	4.11	215,334	116,068	50,526	65,542	149,792
1962-63	5,628,501	3.15	171,963	114,946	54,302	60,644	111,319
1963-64	5,783,898	2.76	155,397	114,775	56,213	58,562	96,835
1964-65	5,951,548	2.90	167,650	110,465	57,868	52,597	115,053
1965-66	6,103,296	2.55	151,748	104,503	60,875	43,628	108,120
1966-67	6,245,644	2.33	142,348	101,129	62,765	38,364	103,984
1967-68	6,433,276	3.00	187,632	100,413	66,224	34,189	153,443
1968-69	6,634,307	3.12	201,031	104,362	71,133	33,229	167,802
1969-70	6,858,965	3.39	224,658	111,460	73,814	37,646	187,012
1970-71	7,234,230	5.47	375,265	117,071	75,362	41,709	333,556
1971-72	7,681,949	6.19	447,719	113,578	79,677	33,901	413,818
1972-73	8,159,681	6.22	477,732	107,692	86,284	21,408	456,324
1973-74	8,513,792	4.34	354,111	109,455	88,458	20,997	333,114
1974-75	8,646,585	1.56	132,793	108,752	87,185	21,567	111,226

FLORIDA POPULATION AND COMPONENTS OF CHANGE

Fiscal Year	Population (end of FY)	Growth Rate	Annual Change in Population	Births	Deaths	Net Natural Increase	Net Migration
1975-76	8,782,834	1.58	136,249	103,859	88,170	15,689	120,560
1976-77	8,972,672	2.16	189,838	107,735	90,432	17,303	172,535
1977-78	9,227,322	2.84	254,650	112,265	93,372	18,893	235,757
1978-79	9,518,233	3.15	290,911	116,269	96,826	19,443	271,468
1979-80	9,840,802	3.39	322,569	126,759	100,958	25,801	296,768
1980-81	10,222,857	3.88	382,055	135,511	107,686	27,825	354,230
1981-82	10,491,106	2.62	268,249	141,562	108,533	33,029	235,220
1982-83	10,748,180	2.45	257,074	146,890	110,534	36,356	220,718
1983-84	11,066,135	2.96	317,955	151,660	113,957	37,703	280,252
1984-85	11,405,254	3.06	339,119	159,879	117,469	42,410	296,709
1985-86	11,739,923	2.93	334,669	165,837	122,536	43,301	291,368
1986-87	12,083,010	2.92	343,087	170,743	124,846	45,897	297,190
1987-88	12,410,073	2.71	327,063	179,610	129,473	50,137	276,926
1988-89	12,723,105	2.52	313,032	188,272	131,997	56,275	256,757
1989-90	13,017,842	2.32	294,737	197,265	132,461	64,804	229,933
1990-91	13,326,534	2.37	308,692	197,197	134,147	63,050	245,642
1991-92	13,550,408	1.68	223,874	191,702	136,199	55,503	168,371
1992-93	13,803,239	1.87	252,831	192,150	142,167	49,983	202,848
1993-94	14,120,464	2.30	317,225	191,833	146,063	45,770	271,455
1994-95	14,405,457	2.02	284,993	189,272	149,127	40,145	244,848
1995-96	14,701,301	2.05	295,844	188,601	152,628	35,973	259,871
1996-97	15,011,734	2.11	310,433	190,552	153,018	37,534	272,899
1997-98	15,309,861	1.99	298,127	194,305	155,044	39,261	258,866
1998-99	15,679,863	2.42	370,002	195,827	160,050	35,777	334,225
1999-00	16,074,809	2.52	394,946	200,271	162,446	37,825	357,121

FLORIDA POPULATION AND COMPONENTS OF CHANGE

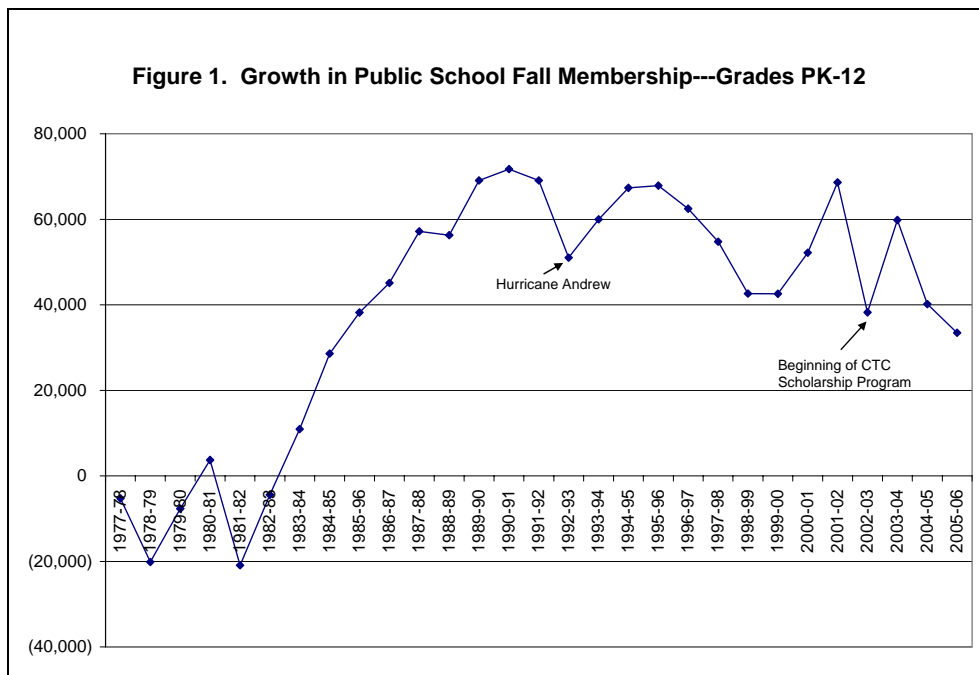
Fiscal Year	Population (end of FY)	Growth Rate	Annual Change in Population	Births	Deaths	Net Natural Increase	Net Migration
2000-01	16,413,469	2.11	338,660	205,898	164,901	40,997	297,663
2001-02	16,767,358	2.16	353,889	205,117	167,860	37,257	316,632
2002-03	17,181,411	2.47	414,053	207,979	168,011	39,968	374,085
2003-04	17,620,690	2.56	439,279	214,032	168,432	45,600	393,679
2004-05	18,023,424	2.29	402,734	221,306	168,974	52,332	350,402
2005-06	18,450,469	2.37	427,045	227,717	171,551	56,166	370,879
2006-07	18,847,052	2.15	396,583	231,870	173,609	58,261	338,322
2007-08	19,251,971	2.15	404,919	236,053	177,490	58,563	346,356
2008-09	19,665,905	2.15	413,934	240,503	183,213	57,290	356,644
2009-10	20,074,404	2.08	408,499	245,149	189,994	55,155	353,344
2010-11	20,462,152	1.93	387,748	249,792	196,558	53,234	334,514
2011-12	20,836,910	1.83	374,758	254,365	202,310	52,055	322,703
2012-13	21,203,889	1.76	366,979	258,803	208,116	50,687	316,292
2013-14	21,564,558	1.70	360,669	263,075	213,971	49,104	311,565
2014-15	21,919,989	1.65	355,431	267,151	219,888	47,263	308,168
2015-16	22,272,263	1.61	352,274	270,988	225,834	45,154	307,120

Public School Enrollment Trends

Statewide

1. The increase in public school enrollment for the 2005-06 school year was the lowest since 1984-85 and was lower than forecasted.

33,459 *Growth in Fall 2005 membership* which was the lowest annual growth since 1984-85 (Figure 1). The lower growth was in spite of receiving over 6,000 students from Mississippi and Louisiana who were displaced by Hurricane Katrina.

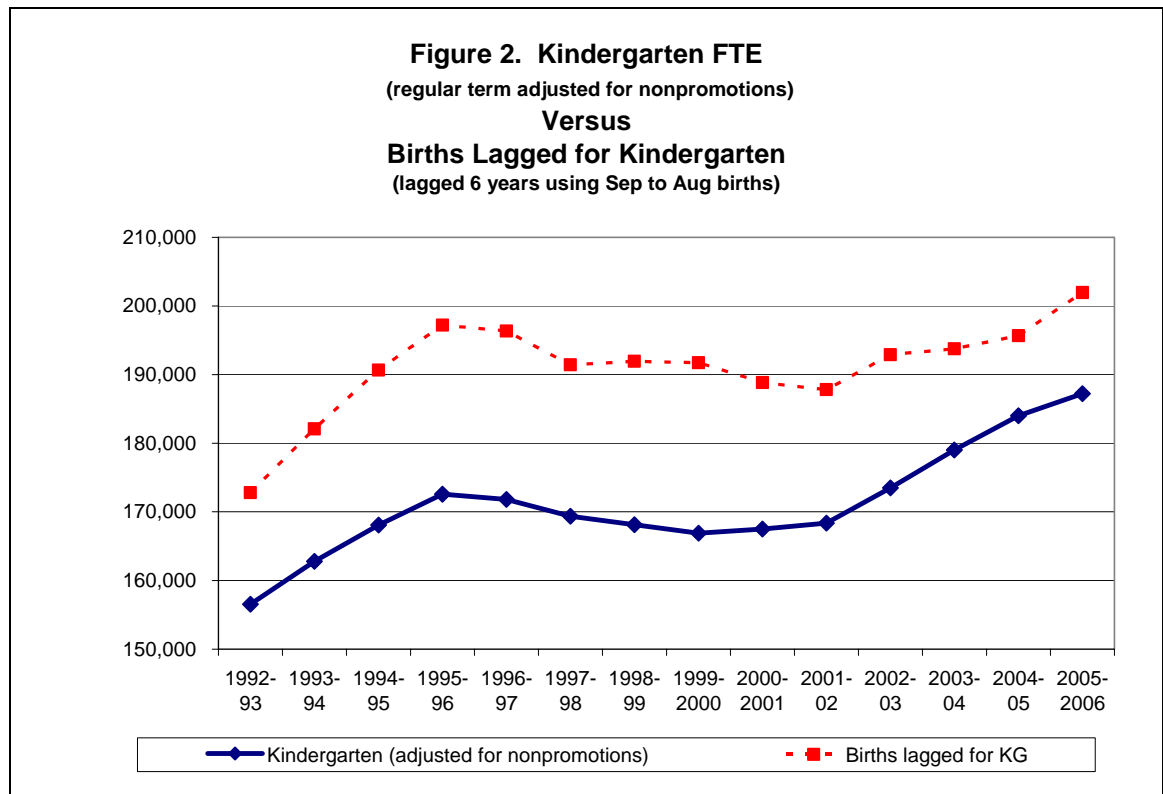


31,527.35 *Actual Growth in Florida Education Finance Program (FEFP) Full-Time Equivalent (FTE) student enrollment¹ for 2005-06.* This was a 1.2 percent increase over 2004-05 school year FTE student enrollment.

65,474.15 *Forecasted Growth in FEFP FTE student enrollment for 2005-06.* A 2.5 percent increase over 2004-05 enrollment was expected.

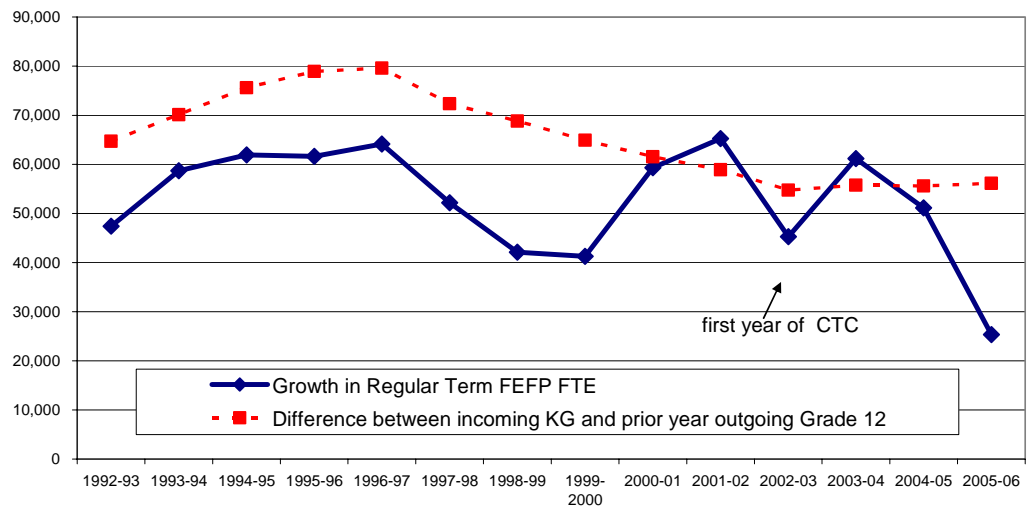
¹ FEFP FTE differs from Fall membership. FEFP FTE is counted four times a year. The regular term (180-day) counts are in October and February. Thus, the FEFP FTE is an average of the membership for the year. Fall membership is a snapshot of the enrollment at one point in time. Fall membership includes all prekindergarten students; FEFP FTE includes only the prekindergarten students who are disabled or children of teenage parents.

The kindergarten grade is one of the most important and most difficult grades to forecast. Figure 2 shows that the relationship between actual kindergarten FTE and births six years prior changed in 2005-06 from the relationship in the previous two years. In 2003-04 and 2004-05 the kindergarten FTE increased at a higher rate than the lagged births; in 2005-06 the kindergarten FTE increased at a lower rate than the lagged births.



The difference between the incoming kindergarten students and the outgoing grade 12 students typically can explain much of the variance in the growth. However, this pattern was not true for 2005-06 (Figure 3).

**Figure 3. Growth in Regular Term FEFP FTE
Versus
Difference Between Incoming KG Grade FTE
and Prior Year Outgoing Grade 12 FTE**



Data are regular term FEFP FTE for the 67 regular school districts. Thus, summer term enrollment and enrollment in special districts are excluded.

2. The slowdown in growth began during the second half of the 2004-05 school year and has continued for both semesters of the 2005-06 school year (Figures 4-7).

Figure 4. FTE Student Enrollment for Oct and Feb Counts of the School Year---Grades PK-12

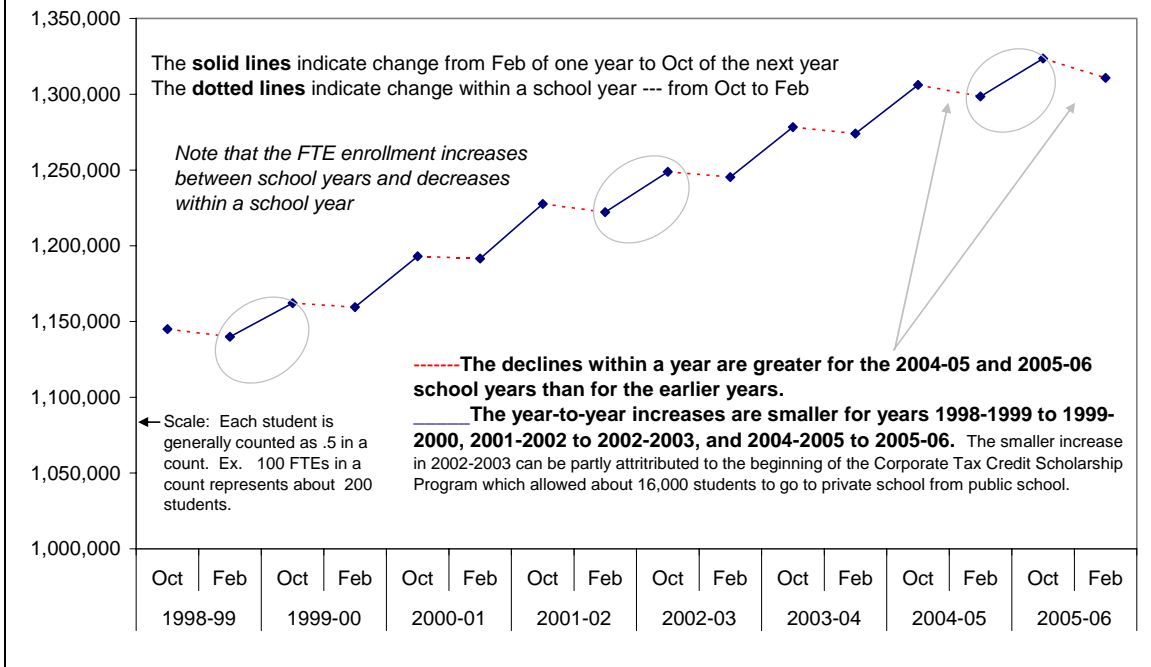
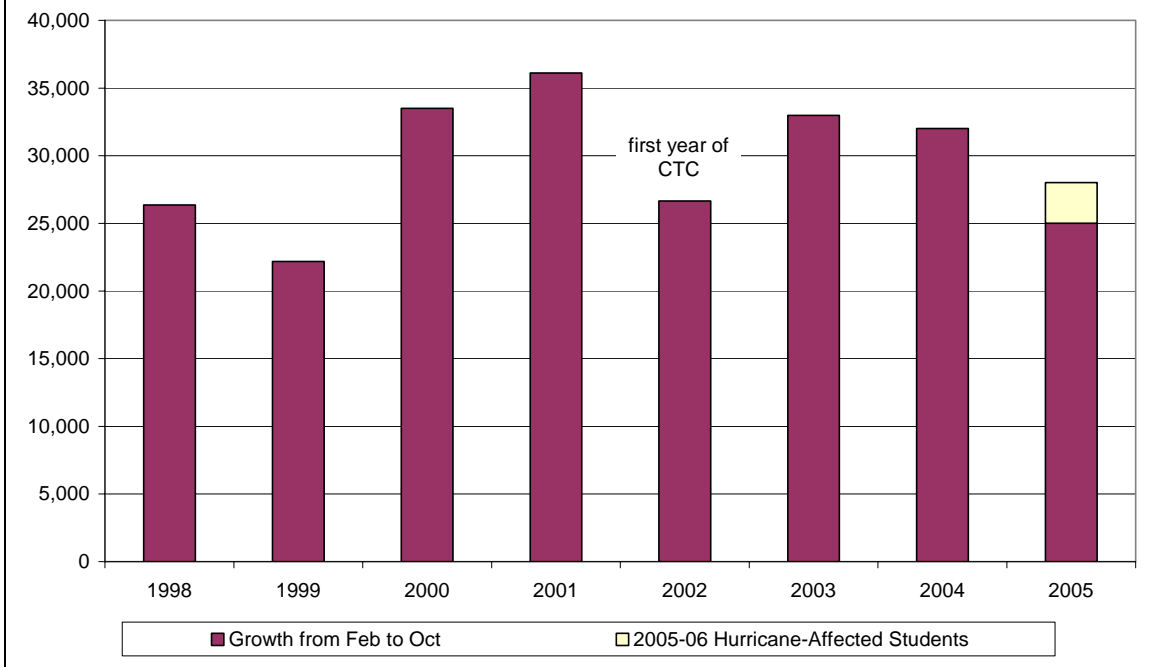
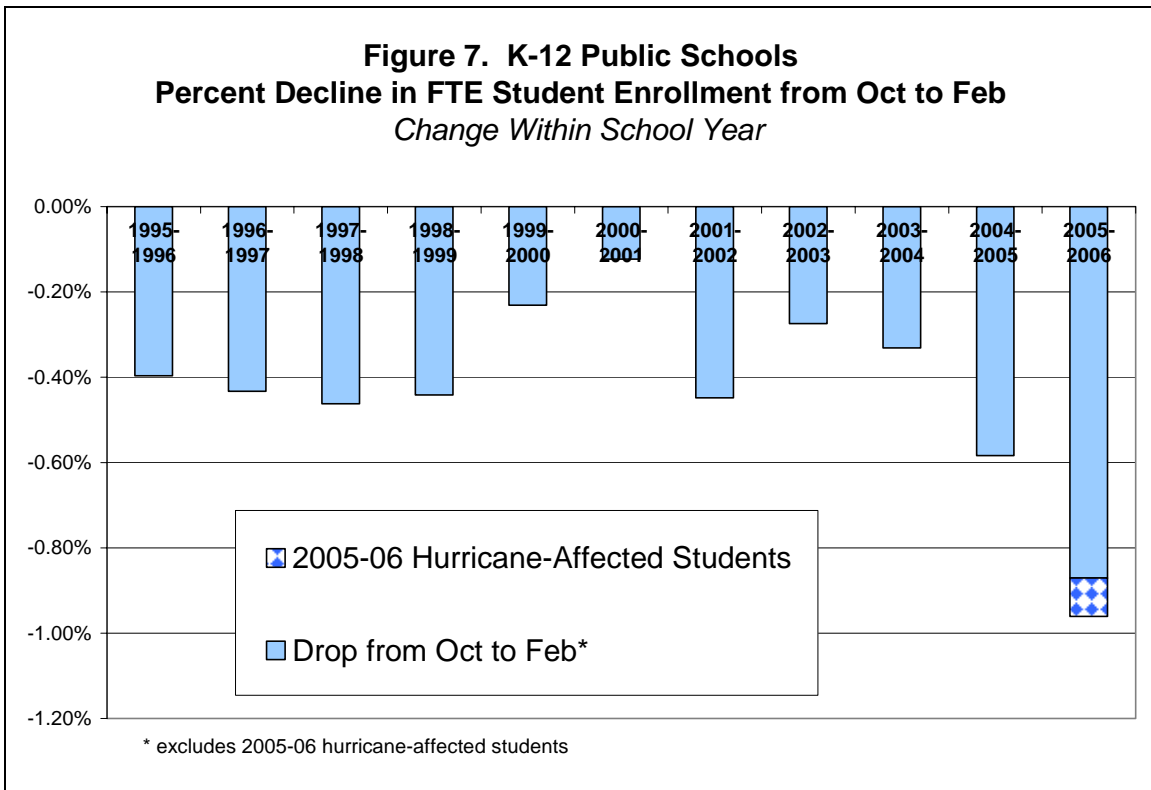
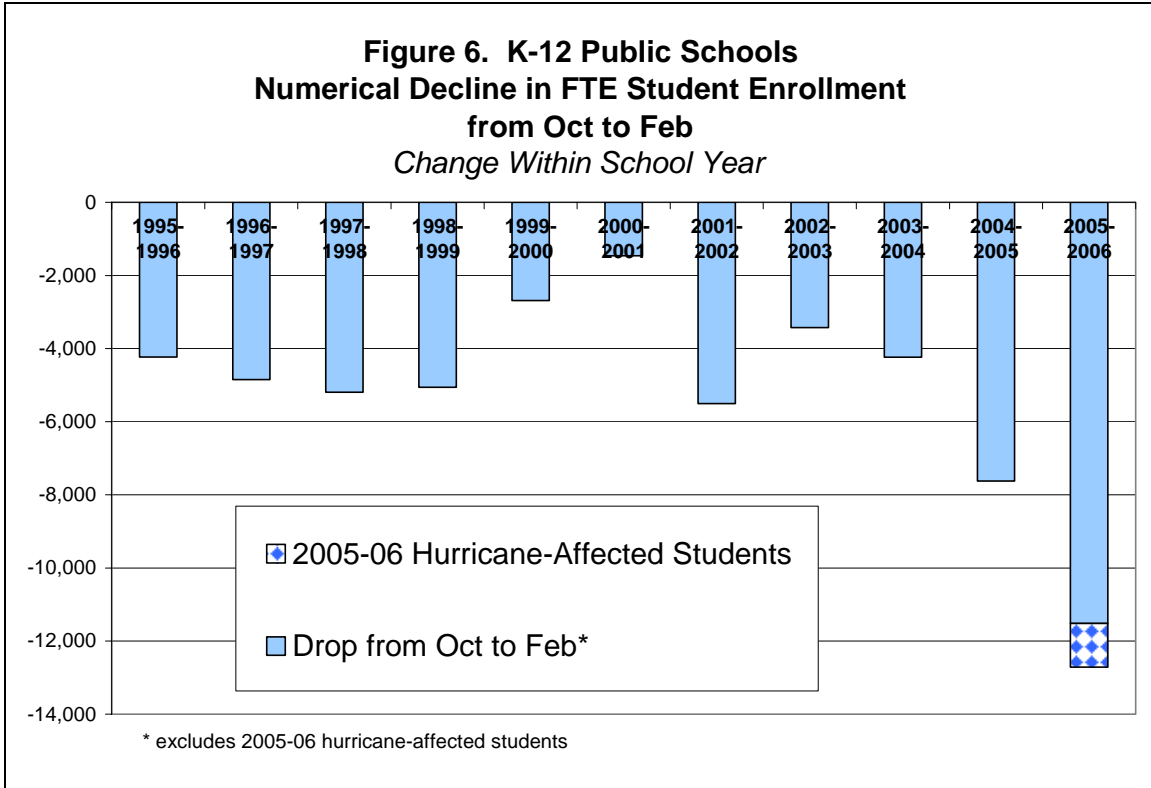


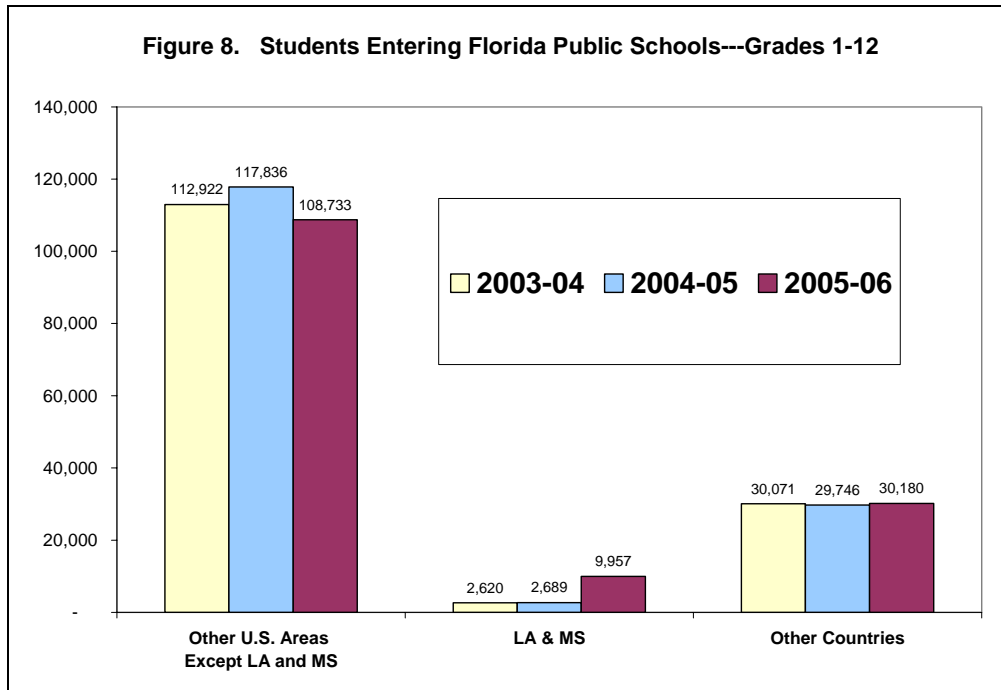
Figure 5. Growth in FTE Enrollment Between School Years (from Feb to Oct)





- The slowing of growth is due to fewer students entering the system from other U.S. areas and possibly to more students leaving the system. (The following estimates² are rounded to the nearest hundred.)

9,100 *Fewer students entering from other U.S. areas (except for LA and MS) in the 2005-06 school year than in the 2004-05 school year (Figure 8).*



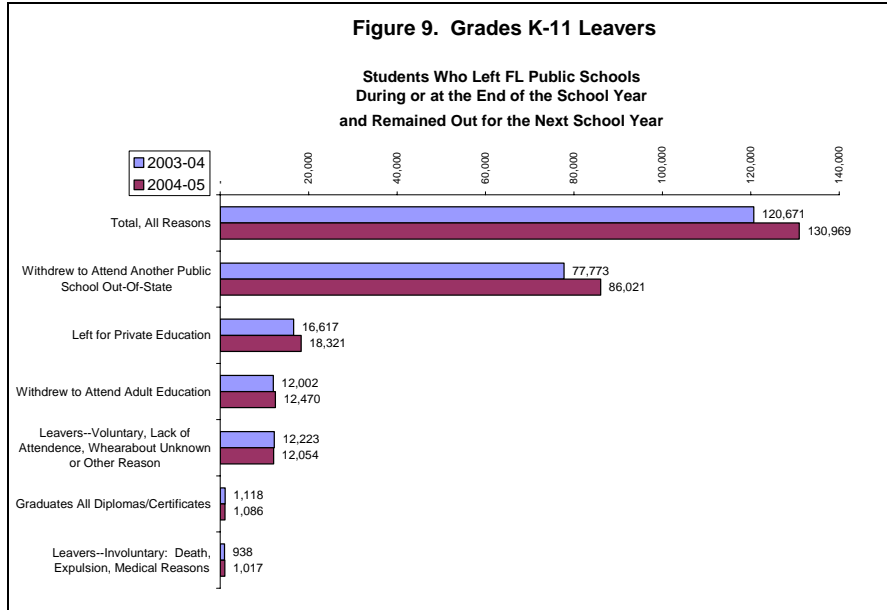
10,300 *More student leavers³ in 2004-05 than in 2003-04 (Figure 9). These additional 2004-05 leavers are students who left during or at the end of the 2004-05 school year and did not re-enroll during the 2005-06 school year.*

8,200 Increase in student leavers who left to attend a public school in another state.

1,700 Increase in student leavers who left to attend a private school or home school either in Florida or elsewhere.

² Although the input data for this analysis are counts of all student enrollment changes, the analysis relies upon matching of records within a year and across years. Error in matching records is present; thus, the figures in this section are estimates and not counts.

³ A leaver for this analysis is a student who leaves the public school system and stays out of the system at least 12 months.



Since there are only two intervals for comparisons, it is unclear whether or not this increase in leavers is typical. However, the corresponding slowdown in growth of the FTE student enrollment beginning in the second semester of 2004-05 indicates that this increase in leavers may be atypical.

No change *Number of students entering from other countries.* This source remained fairly stable at about 30,000 students entering annually.