

# **Florida Demographic Estimating Conference**

## **Tables**

Post-Conference Packet

**July 11, 2013**

# Florida Resident Population

April 1

Year	Florida Demographic Estimating Conference February 2013			Florida Demographic Estimating Conference July 2013		
	Population	% Change	Change	Population	% Change	Change
1990	12,938,071	2.27%	287,136	12,938,071	2.27%	287,136
1991	13,258,732	2.48%	320,661	13,258,732	2.48%	320,661
1992	13,497,541	1.80%	238,809	13,497,541	1.80%	238,809
1993	13,730,115	1.72%	232,574	13,730,115	1.72%	232,574
1994	14,043,757	2.28%	313,642	14,043,757	2.28%	313,642
1995	14,335,992	2.08%	292,235	14,335,992	2.08%	292,235
1996	14,623,421	2.00%	287,429	14,623,421	2.00%	287,429
1997	14,938,314	2.15%	314,893	14,938,314	2.15%	314,893
1998	15,230,421	1.96%	292,107	15,230,421	1.96%	292,107
1999	15,580,244	2.30%	349,823	15,580,244	2.30%	349,823
2000	15,982,824	2.58%	402,580	15,982,824	2.58%	402,580
2001	16,305,100	2.02%	322,276	16,305,100	2.02%	322,276
2002	16,634,256	2.02%	329,156	16,634,256	2.02%	329,156
2003	16,979,706	2.08%	345,450	16,979,706	2.08%	345,450
2004	17,374,824	2.33%	395,118	17,374,824	2.33%	395,118
2005	17,778,156	2.32%	403,332	17,778,156	2.32%	403,332
2006	18,154,475	2.12%	376,319	18,154,475	2.12%	376,319
2007	18,446,768	1.61%	292,293	18,446,768	1.61%	292,293
2008	18,613,905	0.91%	167,137	18,613,905	0.91%	167,137
2009	18,687,425	0.39%	73,520	18,687,425	0.39%	73,520
2010	18,801,332	0.61%	113,885	18,801,332	0.61%	113,907
2011	18,905,070	0.55%	103,738	18,905,070	0.55%	103,738
2012	19,074,434	0.90%	169,364	19,074,434	0.90%	169,364
Begins forecast						
2013	19,266,706	1.01%	192,272	19,261,633	0.98%	187,199
2014	19,490,068	1.16%	223,362	19,484,936	1.16%	223,303
2015	19,750,577	1.34%	260,509	19,745,376	1.34%	260,440
2016	20,029,328	1.41%	278,751	20,024,054	1.41%	278,678
2017	20,312,211	1.41%	282,883	20,306,863	1.41%	282,809
2018	20,592,545	1.38%	280,334	20,587,391	1.38%	280,528
2019	20,868,997	1.34%	276,452	20,864,297	1.35%	276,906
5-Year Averages			5-Year Averages			
2020	21,141,315	1.37%	278,148	21,137,177	1.37%	278,360
2025	22,434,013	1.19%	258,540	22,431,360	1.20%	258,837
2030	23,601,072	1.02%	233,412	23,598,259	1.02%	233,380
2035	24,639,488	0.86%	207,683	24,644,126	0.87%	209,173
2040	25,583,153	0.75%	188,733	25,593,463	0.76%	189,867

# Florida Resident Households

April 1

Year	Florida Demographic Estimating Conference February 2013			Florida Demographic Estimating Conference July 2013		
	Households	% Change	Change	Households	% Change	Change
1990	5,134,869	3.40%	168,985	5,134,869	3.40%	168,985
1991	5,283,154	2.89%	148,285	5,283,154	2.89%	148,285
1992	5,378,499	1.80%	95,345	5,378,499	1.80%	95,345
1993	5,478,476	1.86%	99,977	5,478,476	1.86%	99,977
1994	5,589,093	2.02%	110,617	5,589,093	2.02%	110,617
1995	5,697,328	1.94%	108,235	5,697,328	1.94%	108,235
1996	5,806,031	1.91%	108,703	5,806,031	1.91%	108,703
1997	5,929,613	2.13%	123,582	5,929,613	2.13%	123,582
1998	6,040,514	1.87%	110,901	6,040,514	1.87%	110,901
1999	6,182,346	2.35%	141,832	6,182,346	2.35%	141,832
2000	6,338,075	2.52%	155,729	6,338,075	2.52%	155,729
2001	6,467,215	2.04%	129,140	6,467,215	2.04%	129,140
2002	6,599,035	2.04%	131,820	6,599,035	2.04%	131,820
2003	6,737,370	2.10%	138,335	6,737,370	2.10%	138,335
2004	6,895,469	2.35%	158,099	6,895,469	2.35%	158,099
2005	7,056,889	2.34%	161,420	7,056,889	2.34%	161,420
2006	7,207,645	2.14%	150,756	7,207,645	2.14%	150,756
2007	7,312,907	1.46%	105,262	7,312,907	1.46%	105,262
2008	7,368,319	0.76%	55,412	7,368,319	0.76%	55,412
2009	7,386,570	0.25%	18,251	7,386,570	0.25%	18,251
2010	7,420,802	0.46%	34,232	7,420,812	0.46%	34,242
2011	7,461,969	0.55%	41,167	7,461,978	0.55%	41,166
2012	7,537,442	1.01%	75,473	7,537,442	1.01%	75,464
Begins forecast						
2013	7,624,162	1.15%	86,720	7,622,155	1.12%	84,713
2014	7,722,494	1.29%	98,332	7,720,461	1.29%	98,306
2015	7,833,705	1.44%	111,211	7,831,642	1.44%	111,181
2016	7,949,468	1.48%	115,763	7,947,375	1.48%	115,733
2017	8,065,229	1.46%	115,761	8,063,106	1.46%	115,731
2018	8,178,279	1.40%	113,050	8,176,232	1.40%	113,126
2019	8,288,829	1.35%	110,550	8,286,962	1.35%	110,730
5-Year Averages						
2020	8,397,555	1.40%	112,770	8,395,912	1.40%	112,854
2025	8,919,240	1.21%	104,337	8,918,185	1.21%	104,455
2030	9,390,946	1.04%	94,341	9,389,827	1.04%	94,328
2035	9,811,168	0.88%	84,044	9,813,015	0.89%	84,638
2040	10,194,165	0.77%	76,599	10,198,273	0.77%	77,052

Quarterly Data Table

QUARTERLY FORECAST TABLES

	<u>2008-1</u>	<u>2008-2</u>	<u>2008-3</u>	<u>2008-4</u>	<u>2009-1</u>	<u>2009-2</u>	<u>2009-3</u>	<u>2009-4</u>	<u>2010-1</u>	<u>2010-2</u>	<u>2010-3</u>	<u>2010-4</u>	<u>2011-1</u>	<u>2011-2</u>	<u>2011-3</u>
<b>Population</b>															
FDEC, 02/2013	18,599.6	18,625.4	18,645.5	18,661.9	18,678.6	18,699.6	18,726.1	18,755.5	18,786.1	18,814.2	18,839.1	18,863.7	18,890.7	18,923.1	18,961.9
FDEC, 07/2013	18,599.6	18,625.4	18,645.5	18,661.9	18,678.6	18,699.6	18,726.1	18,755.5	18,786.1	18,814.0	18,838.4	18,862.8	18,890.2	18,923.2	18,962.3
<b>Population Growth Rate</b>															
FDEC, 02/2013	0.72	0.56	0.43	0.35	0.36	0.45	0.57	0.63	0.65	0.60	0.53	0.52	0.57	0.69	0.82
FDEC, 07/2013	0.72	0.56	0.43	0.35	0.36	0.45	0.57	0.63	0.65	0.60	0.52	0.52	0.58	0.70	0.83
<b>Net Change in Population</b>															
FDEC, 02/2013	33.2	25.8	20.1	16.4	16.6	21.1	26.4	29.5	30.5	28.1	24.9	24.6	27.0	32.4	38.8
FDEC, 07/2013	33.2	25.8	20.1	16.4	16.6	21.1	26.4	29.5	30.5	27.9	24.5	24.4	27.4	33.0	39.1
<b>Households</b>															
FDEC, 02/2013	7,363.9	7,371.6	7,377.0	7,380.8	7,384.5	7,390.0	7,397.7	7,406.6	7,416.0	7,425.5	7,434.9	7,444.8	7,456.0	7,469.9	7,487.1
FDEC, 07/2013	7,363.9	7,371.6	7,377.0	7,380.8	7,384.5	7,390.0	7,397.7	7,406.6	7,416.0	7,425.4	7,434.6	7,444.5	7,455.8	7,470.0	7,487.2
<b>Household Growth Rate</b>															
FDEC, 02/2013	0.58	0.42	0.29	0.21	0.20	0.30	0.41	0.48	0.51	0.51	0.51	0.54	0.60	0.75	0.92
FDEC, 07/2013	0.58	0.42	0.29	0.21	0.20	0.30	0.41	0.48	0.51	0.51	0.50	0.53	0.61	0.76	0.93
<b>Net Change in Households</b>															
FDEC, 02/2013	10.6	7.7	5.4	3.8	3.7	5.5	7.7	8.9	9.5	9.4	9.4	10.0	11.2	13.9	17.2
FDEC, 07/2013	10.6	7.7	5.4	3.8	3.7	5.5	7.7	8.9	9.5	9.4	9.2	9.9	11.3	14.1	17.3
<b>Household Size</b>															
FDEC, 02/2013	2.526	2.527	2.528	2.528	2.529	2.530	2.531	2.532	2.533	2.534	2.534	2.534	2.534	2.533	2.533
FDEC, 07/2013	2.526	2.527	2.528	2.528	2.529	2.530	2.531	2.532	2.533	2.534	2.534	2.534	2.534	2.533	2.533
<b>Household Size Growth Rate</b>															
FDEC, 02/2013	0.14	0.14	0.14	0.14	0.16	0.15	0.15	0.15	0.14	0.09	0.02	-0.01	-0.03	-0.06	-0.10
FDEC, 07/2013	0.14	0.14	0.14	0.14	0.16	0.15	0.15	0.15	0.14	0.09	0.02	-0.01	-0.03	-0.06	-0.10
<b>Net Migration</b>															
FDEC, 02/2013	17.0	10.3	5.2	2.1	2.9	7.9	13.8	17.5	19.4	17.5	14.6	14.6	16.6	22.2	28.8
FDEC, 07/2013	17.0	10.3	5.2	2.1	2.9	7.9	13.8	17.5	19.4	17.3	14.2	14.4	17.1	22.8	29.0
<b>Births</b>															
FDEC, 02/2013	58.7	58.1	57.6	57.0	56.2	55.6	55.1	54.6	54.1	53.7	53.5	53.3	53.4	53.3	53.3
FDEC, 07/2013	58.7	58.1	57.6	57.0	56.2	55.6	55.1	54.6	54.1	53.7	53.5	53.3	53.4	53.3	53.3
<b>Deaths</b>															
FDEC, 02/2013	42.5	42.6	42.7	42.7	42.4	42.4	42.5	42.6	43.0	43.1	43.2	43.3	43.1	43.1	43.2
FDEC, 07/2013	42.5	42.6	42.7	42.7	42.4	42.4	42.5	42.6	43.0	43.1	43.2	43.3	43.1	43.1	43.2
<b>Net Natural Increase</b>															
FDEC, 02/2013	16.2	15.5	14.9	14.3	13.8	13.2	12.6	12.0	11.1	10.6	10.3	10.0	10.3	10.2	10.0
FDEC, 07/2013	16.2	15.5	14.9	14.3	13.8	13.2	12.6	12.0	11.1	10.6	10.3	10.0	10.3	10.2	10.0

Quarterly Data Table

QUARTERLY FORECAST TABLES

	<u>2011-4</u>	<u>2012-1</u>	<u>2012-2</u>	<u>2012-3</u>	<u>2012-4</u>	<u>2013-1</u>	<u>2013-2</u>	<u>2013-3</u>	<u>2013-4</u>	<u>2014-1</u>	<u>2014-2</u>	<u>2014-3</u>	<u>2014-4</u>	<u>2015-1</u>	<u>2015-2</u>
<b>Population</b>															
FDEC, 02/2013	19,005.2	19,051.1	19,097.9	19,144.9	19,192.7	19,241.7	19,292.8	19,346.1	19,401.9	19,460.3	19,521.2	19,584.5	19,649.8	19,716.7	19,784.9
FDEC, 07/2013	19,005.7	19,051.3	19,097.3	19,143.1	19,189.4	19,237.2	19,287.5	19,340.5	19,396.4	19,455.0	19,516.1	19,579.4	19,644.7	19,711.6	19,779.7
<b>Population Growth Rate</b>															
FDEC, 02/2013	0.92	0.97	0.99	0.99	1.00	1.03	1.07	1.11	1.16	1.21	1.26	1.30	1.34	1.37	1.39
FDEC, 07/2013	0.92	0.96	0.97	0.96	0.97	1.00	1.05	1.11	1.16	1.21	1.26	1.30	1.34	1.37	1.39
<b>Net Change in Population</b>															
FDEC, 02/2013	43.3	45.9	46.8	47.0	47.7	49.1	51.0	53.4	55.8	58.3	60.9	63.3	65.3	67.0	68.2
FDEC, 07/2013	43.4	45.6	46.0	45.8	46.3	47.8	50.2	53.1	55.9	58.6	61.1	63.4	65.3	66.9	68.1
<b>Households</b>															
FDEC, 02/2013	7,506.4	7,526.9	7,548.0	7,569.3	7,590.9	7,613.0	7,635.8	7,659.5	7,684.0	7,709.5	7,735.9	7,763.2	7,791.1	7,819.4	7,848.1
FDEC, 07/2013	7,506.6	7,527.0	7,547.8	7,568.6	7,589.6	7,611.2	7,633.7	7,657.3	7,681.9	7,707.4	7,733.9	7,761.2	7,789.0	7,817.4	7,846.0
<b>Household Growth Rate</b>															
FDEC, 02/2013	1.03	1.10	1.12	1.13	1.14	1.17	1.20	1.25	1.29	1.33	1.38	1.42	1.45	1.46	1.47
FDEC, 07/2013	1.04	1.10	1.11	1.10	1.11	1.14	1.19	1.24	1.29	1.34	1.38	1.42	1.44	1.46	1.47
<b>Net Change in Households</b>															
FDEC, 02/2013	19.3	20.6	21.1	21.3	21.6	22.1	22.8	23.7	24.6	25.5	26.4	27.2	27.9	28.4	28.7
FDEC, 07/2013	19.3	20.5	20.8	20.8	21.0	21.6	22.5	23.6	24.6	25.6	26.5	27.3	27.9	28.3	28.6
<b>Household Size</b>															
FDEC, 02/2013	2.532	2.531	2.530	2.529	2.528	2.528	2.527	2.526	2.525	2.524	2.523	2.523	2.522	2.522	2.521
FDEC, 07/2013	2.532	2.531	2.530	2.529	2.528	2.528	2.527	2.526	2.525	2.524	2.523	2.523	2.522	2.522	2.521
<b>Household Size Growth Rate</b>															
FDEC, 02/2013	-0.12	-0.13	-0.14	-0.14	-0.14	-0.14	-0.14	-0.13	-0.13	-0.12	-0.12	-0.11	-0.10	-0.09	-0.08
FDEC, 07/2013	-0.12	-0.13	-0.14	-0.14	-0.14	-0.14	-0.14	-0.13	-0.13	-0.12	-0.12	-0.11	-0.10	-0.09	-0.08
<b>Net Migration</b>															
FDEC, 02/2013	33.5	36.5	37.6	37.9	38.7	40.0	42.0	44.2	46.6	48.9	51.3	53.6	55.5	57.0	58.1
FDEC, 07/2013	33.6	36.1	36.7	36.6	37.2	38.8	41.2	44.0	46.7	49.2	51.6	53.7	55.5	56.9	58.1
<b>Births</b>															
FDEC, 02/2013	53.2	53.1	53.1	53.1	53.2	53.3	53.4	53.6	53.7	54.0	54.2	54.4	54.6	54.9	55.1
FDEC, 07/2013	53.2	53.2	53.2	53.2	53.3	53.3	53.4	53.6	53.7	53.9	54.1	54.3	54.5	54.8	55.0
<b>Deaths</b>															
FDEC, 02/2013	43.4	43.7	43.9	44.0	44.2	44.3	44.4	44.5	44.5	44.5	44.6	44.7	44.8	44.9	45.0
FDEC, 07/2013	43.4	43.7	43.9	44.0	44.2	44.3	44.4	44.5	44.5	44.5	44.6	44.7	44.8	44.9	45.0
<b>Net Natural Increase</b>															
FDEC, 02/2013	9.8	9.4	9.2	9.1	9.0	9.0	9.1	9.1	9.2	9.4	9.6	9.7	9.8	10.0	10.1
FDEC, 07/2013	9.9	9.5	9.3	9.2	9.1	9.1	9.1	9.1	9.2	9.4	9.5	9.6	9.7	9.9	10.0

Quarterly Data Table

QUARTERLY FORECAST TABLES

	<u>2015-3</u>	<u>2015-4</u>	<u>2016-1</u>	<u>2016-2</u>	<u>2016-3</u>	<u>2016-4</u>	<u>2017-1</u>	<u>2017-2</u>	<u>2017-3</u>	<u>2017-4</u>	<u>2018-1</u>	<u>2018-2</u>	<u>2018-3</u>	<u>2018-4</u>	<u>2019-1</u>
<b>Population</b>															
FDEC, 02/2013	19,854.0	19,923.8	19,994.1	20,064.7	20,135.4	20,206.1	20,276.9	20,347.4	20,417.7	20,487.8	20,557.7	20,627.3	20,696.7	20,765.8	20,834.6
FDEC, 07/2013	19,848.8	19,918.5	19,988.8	20,059.4	20,130.1	20,200.9	20,271.6	20,342.1	20,412.4	20,482.6	20,552.5	20,622.2	20,691.6	20,760.9	20,829.9
<b>Population Growth Rate</b>															
FDEC, 02/2013	1.40	1.41	1.42	1.42	1.42	1.41	1.41	1.40	1.39	1.38	1.37	1.36	1.35	1.34	1.33
FDEC, 07/2013	1.40	1.41	1.42	1.42	1.42	1.41	1.41	1.40	1.39	1.38	1.37	1.36	1.35	1.35	1.34
<b>Net Change in Population</b>															
FDEC, 02/2013	69.1	69.8	70.3	70.6	70.7	70.8	70.7	70.6	70.3	70.1	69.8	69.6	69.4	69.1	68.9
FDEC, 07/2013	69.1	69.8	70.3	70.6	70.7	70.8	70.7	70.5	70.3	70.1	69.9	69.7	69.5	69.2	69.0
<b>Households</b>															
FDEC, 02/2013	7,876.9	7,905.9	7,934.9	7,964.0	7,993.0	8,022.0	8,050.8	8,079.5	8,108.0	8,136.2	8,164.3	8,192.2	8,220.0	8,247.6	8,275.1
FDEC, 07/2013	7,874.8	7,903.8	7,932.8	7,961.9	7,990.9	8,019.9	8,048.7	8,077.4	8,105.8	8,134.1	8,162.2	8,190.2	8,218.0	8,245.7	8,273.2
<b>Household Growth Rate</b>															
FDEC, 02/2013	1.48	1.48	1.48	1.47	1.47	1.46	1.45	1.43	1.42	1.40	1.39	1.37	1.36	1.35	1.34
FDEC, 07/2013	1.48	1.48	1.48	1.47	1.47	1.46	1.45	1.43	1.42	1.40	1.39	1.38	1.37	1.35	1.34
<b>Net Change in Households</b>															
FDEC, 02/2013	28.8	29.0	29.0	29.1	29.0	29.0	28.8	28.7	28.4	28.3	28.1	27.9	27.8	27.6	27.5
FDEC, 07/2013	28.8	29.0	29.0	29.1	29.0	29.0	28.8	28.6	28.5	28.3	28.1	28.0	27.8	27.7	27.6
<b>Household Size</b>															
FDEC, 02/2013	2.521	2.520	2.520	2.519	2.519	2.519	2.519	2.518	2.518	2.518	2.518	2.518	2.518	2.518	2.518
FDEC, 07/2013	2.521	2.520	2.520	2.519	2.519	2.519	2.519	2.518	2.518	2.518	2.518	2.518	2.518	2.518	2.518
<b>Household Size Growth Rate</b>															
FDEC, 02/2013	-0.07	-0.06	-0.06	-0.05	-0.05	-0.04	-0.04	-0.03	-0.03	-0.02	-0.02	-0.01	-0.01	-0.01	-0.01
FDEC, 07/2013	-0.07	-0.06	-0.06	-0.05	-0.05	-0.04	-0.04	-0.03	-0.03	-0.02	-0.02	-0.01	-0.01	-0.01	-0.01
<b>Net Migration</b>															
FDEC, 02/2013	58.9	59.6	60.1	60.3	60.4	60.5	60.4	60.2	60.0	59.7	59.4	59.1	58.8	58.6	58.3
FDEC, 07/2013	59.0	59.6	60.1	60.4	60.5	60.5	60.4	60.3	60.1	59.9	59.7	59.5	59.3	59.2	59.0
<b>Births</b>															
FDEC, 02/2013	55.3	55.5	55.7	55.9	56.1	56.3	56.5	56.7	57.0	57.2	57.5	57.8	58.2	58.6	59.0
FDEC, 07/2013	55.2	55.5	55.7	55.9	56.1	56.3	56.4	56.6	56.9	57.2	57.5	57.8	58.1	58.5	59.0
<b>Deaths</b>															
FDEC, 02/2013	45.1	45.3	45.5	45.7	45.9	46.0	46.2	46.4	46.6	46.8	47.1	47.4	47.7	48.0	48.4
FDEC, 07/2013	45.1	45.3	45.5	45.7	45.9	46.0	46.2	46.4	46.6	46.9	47.2	47.6	48.0	48.4	49.0
<b>Net Natural Increase</b>															
FDEC, 02/2013	10.2	10.2	10.2	10.2	10.3	10.3	10.3	10.3	10.4	10.4	10.5	10.5	10.5	10.6	10.6
FDEC, 07/2013	10.1	10.2	10.1	10.2	10.2	10.2	10.2	10.3	10.3	10.2	10.2	10.2	10.1	10.0	10.0

Quarterly Data Table

QUARTERLY FORECAST TABLES

	<u>2019-2</u>	<u>2019-3</u>	<u>2019-4</u>	<u>2020-1</u>	<u>2020-2</u>	<u>2020-3</u>	<u>2020-4</u>	<u>2021-1</u>	<u>2021-2</u>	<u>2021-3</u>	<u>2021-4</u>	<u>2022-1</u>	<u>2022-2</u>
<b>Population</b>													
FDEC, 02/2013	20,903.2	20,971.6	21,039.7	21,107.5	21,175.0	21,242.3	21,309.3	21,376.0	21,442.4	21,508.5	21,574.4	21,640.0	21,705.2
FDEC, 07/2013	20,898.6	20,967.1	21,035.3	21,103.3	21,170.9	21,238.4	21,305.5	21,372.3	21,438.9	21,505.1	21,571.1	21,636.8	21,702.1
<b>Population Growth Rate</b>													
FDEC, 02/2013	1.32	1.31	1.30	1.30	1.29	1.28	1.27	1.26	1.25	1.24	1.23	1.22	1.21
FDEC, 07/2013	1.33	1.32	1.31	1.30	1.29	1.28	1.27	1.26	1.25	1.24	1.23	1.22	1.21
<b>Net Change in Population</b>													
FDEC, 02/2013	68.6	68.3	68.1	67.8	67.5	67.3	67.0	66.7	66.4	66.1	65.9	65.6	65.3
FDEC, 07/2013	68.7	68.5	68.2	68.0	67.7	67.4	67.1	66.8	66.6	66.3	66.0	65.7	65.4
<b>Households</b>													
FDEC, 02/2013	8,302.5	8,329.8	8,357.0	8,384.0	8,411.0	8,437.9	8,464.8	8,491.5	8,518.2	8,544.8	8,571.3	8,597.7	8,624.0
FDEC, 07/2013	8,300.7	8,328.0	8,355.2	8,382.4	8,409.4	8,436.4	8,463.3	8,490.1	8,516.8	8,543.4	8,570.0	8,596.4	8,622.8
<b>Household Growth Rate</b>													
FDEC, 02/2013	1.33	1.32	1.31	1.30	1.29	1.29	1.28	1.27	1.26	1.25	1.25	1.24	1.23
FDEC, 07/2013	1.33	1.32	1.31	1.31	1.30	1.29	1.28	1.27	1.26	1.26	1.25	1.24	1.23
<b>Net Change in Households</b>													
FDEC, 02/2013	27.4	27.3	27.2	27.1	27.0	26.9	26.8	26.7	26.7	26.6	26.5	26.4	26.3
FDEC, 07/2013	27.4	27.3	27.2	27.1	27.1	27.0	26.9	26.8	26.7	26.6	26.5	26.5	26.4
<b>Household Size</b>													
FDEC, 02/2013	2.518	2.518	2.518	2.518	2.518	2.517	2.517	2.517	2.517	2.517	2.517	2.517	2.517
FDEC, 07/2013	2.518	2.518	2.518	2.518	2.518	2.517	2.517	2.517	2.517	2.517	2.517	2.517	2.517
<b>Household Size Growth Rate</b>													
FDEC, 02/2013	-0.01	-0.01	-0.01	-0.01	-0.01	-0.01	-0.01	-0.01	-0.01	-0.01	-0.02	-0.02	-0.02
FDEC, 07/2013	-0.01	-0.01	-0.01	-0.01	-0.01	-0.01	-0.01	-0.01	-0.01	-0.01	-0.02	-0.02	-0.02
<b>Net Migration</b>													
FDEC, 02/2013	58.0	57.8	57.6	57.4	57.3	57.3	57.3	57.3	57.2	57.2	57.1	57.0	56.9
FDEC, 07/2013	58.8	58.7	58.7	58.6	58.5	58.5	58.4	58.5	58.5	58.4	58.3	58.2	58.1
<b>Births</b>													
FDEC, 02/2013	59.4	59.8	60.2	60.4	60.6	60.7	60.9	60.9	61.0	61.1	61.2	61.3	61.4
FDEC, 07/2013	59.4	59.7	60.0	60.3	60.5	60.7	60.8	60.8	60.9	61.0	61.1	61.3	61.3
<b>Deaths</b>													
FDEC, 02/2013	48.8	49.2	49.7	50.0	50.4	50.8	51.1	51.5	51.8	52.1	52.4	52.7	53.0
FDEC, 07/2013	49.5	49.9	50.4	50.9	51.4	51.8	52.2	52.5	52.9	53.2	53.5	53.8	54.1
<b>Net Natural Increase</b>													
FDEC, 02/2013	10.6	10.6	10.5	10.4	10.2	10.0	9.7	9.4	9.2	9.0	8.8	8.6	8.4
FDEC, 07/2013	9.9	9.7	9.6	9.4	9.1	8.9	8.7	8.3	8.1	7.9	7.6	7.5	7.3

FISCAL YEAR  
FORECAST TABLES

Fiscal Year Data Table

	<u>1990-91</u>	<u>1991-92</u>	<u>1992-93</u>	<u>1993-94</u>	<u>1994-95</u>	<u>1995-96</u>	<u>1996-97</u>	<u>1997-98</u>	<u>1998-99</u>	<u>1999-00</u>	<u>2000-01</u>	<u>2001-02</u>	<u>2002-03</u>	<u>2003-04</u>	<u>2004-05</u>
Population															
FDEC, 02/2013	13,178.0	13,442.6	13,670.0	13,962.2	14,264.9	14,550.7	14,859.1	15,158.3	15,488.4	15,881.7	16,228.0	16,551.2	16,892.0	17,273.8	17,677.3
FDEC, 07/2013	13,178.0	13,442.6	13,670.0	13,962.2	14,264.9	14,550.7	14,859.1	15,158.3	15,488.4	15,881.7	16,228.0	16,551.2	16,892.0	17,273.8	17,677.3
Growth Rate															
FDEC, 02/2013	2.42	2.01	1.69	2.14	2.17	2.00	2.12	2.01	2.18	2.54	2.18	1.99	2.06	2.26	2.34
FDEC, 07/2013	2.42	2.01	1.69	2.14	2.17	2.00	2.12	2.01	2.18	2.54	2.18	1.99	2.06	2.26	2.34
Net Change in Population															
FDEC, 02/2013	311.4	264.6	227.4	292.2	302.8	285.8	308.4	299.2	330.1	393.2	346.4	323.2	340.9	381.8	403.5
FDEC, 07/2013	311.4	264.6	227.4	292.2	302.8	285.8	308.4	299.2	330.1	393.2	346.4	323.2	340.9	381.8	403.5
Households															
FDEC, 02/2013	5,230.7	5,335.4	5,424.2	5,538.0	5,655.6	5,766.7	5,887.3	6,005.5	6,137.4	6,296.9	6,436.4	6,565.8	6,702.3	6,855.1	7,016.4
FDEC, 07/2013	5,230.7	5,335.4	5,424.2	5,538.0	5,655.6	5,766.7	5,887.3	6,005.5	6,137.4	6,296.9	6,436.4	6,565.8	6,702.3	6,855.1	7,016.4
Growth Rate															
FDEC, 02/2013	2.44	2.00	1.66	2.10	2.12	1.96	2.09	2.01	2.20	2.60	2.22	2.01	2.08	2.28	2.35
FDEC, 07/2013	2.44	2.00	1.66	2.10	2.12	1.96	2.09	2.01	2.20	2.60	2.22	2.01	2.08	2.28	2.35
Net Change in Households															
FDEC, 02/2013	124.7	104.7	88.8	113.8	117.7	111.1	120.6	118.1	131.9	159.5	139.5	129.3	136.5	152.8	161.3
FDEC, 07/2013	124.7	104.7	88.8	113.8	117.7	111.1	120.6	118.1	131.9	159.5	139.5	129.3	136.5	152.8	161.3
Household Size															
FDEC, 02/2013	2.519	2.520	2.520	2.521	2.522	2.523	2.524	2.524	2.524	2.522	2.521	2.521	2.520	2.520	2.519
FDEC, 07/2013	2.519	2.520	2.520	2.521	2.522	2.523	2.524	2.524	2.524	2.522	2.521	2.521	2.520	2.520	2.519
Growth Rate															
FDEC, 02/2013	-0.02	0.01	0.03	0.04	0.04	0.04	0.03	0.01	-0.02	-0.06	-0.03	-0.02	-0.02	-0.02	-0.02
FDEC, 07/2013	-0.02	0.01	0.03	0.04	0.04	0.04	0.03	0.01	-0.02	-0.06	-0.03	-0.02	-0.02	-0.02	-0.02
Net Migration															
FDEC, 02/2013	248.4	208.9	177.4	246.6	262.7	249.6	270.9	260.4	293.9	355.3	306.0	285.5	300.4	335.0	351.1
FDEC, 07/2013	248.4	208.9	177.4	246.6	262.7	249.6	270.9	260.4	293.9	355.3	306.0	285.5	300.4	335.0	351.1
Births															
FDEC, 02/2013	197.0	192.2	192.0	191.7	189.4	188.6	190.7	194.0	196.0	200.5	205.4	205.4	208.5	215.0	221.8
FDEC, 07/2013	197.0	192.2	192.0	191.7	189.4	188.6	190.7	194.0	196.0	200.5	205.4	205.4	208.5	215.0	221.8
Deaths															
FDEC, 02/2013	134.0	136.5	142.0	146.1	149.3	152.4	153.1	155.3	159.8	162.5	165.0	167.7	168.1	168.3	169.4
FDEC, 07/2013	134.0	136.5	142.0	146.1	149.3	152.4	153.1	155.3	159.8	162.5	165.0	167.7	168.1	168.3	169.4
Net Natural Increase															
FDEC, 02/2013	63.0	55.7	50.0	45.6	40.1	36.2	37.5	38.8	36.2	38.0	40.3	37.7	40.4	46.7	52.4
FDEC, 07/2013	63.0	55.7	50.0	45.6	40.1	36.2	37.5	38.8	36.2	38.0	40.3	37.7	40.4	46.7	52.4



FISCAL YEAR  
FORECAST TABLES

Fiscal Year Data Table

	<u>2005-06</u>	<u>2006-07</u>	<u>2007-08</u>	<u>2008-09</u>	<u>2009-10</u>	<u>2010-11</u>	<u>2011-12</u>	<u>2012-13</u>	<u>2013-14</u>	<u>2014-15</u>	<u>2015-16</u>	<u>2016-17</u>	<u>2017-18</u>	<u>2018-19</u>
Population														
FDEC, 02/2013	18,062.2	18,378.2	18,578.9	18,671.4	18,770.5	18,879.1	19,029.0	19,218.0	19,432.4	19,684.0	19,959.1	20,241.4	20,522.6	20,800.1
FDEC, 07/2013	18,062.2	18,378.2	18,578.9	18,671.4	18,770.4	18,878.7	19,029.2	19,214.3	19,427.0	19,678.9	19,953.9	20,236.2	20,517.4	20,795.2
Growth Rate														
FDEC, 02/2013	2.18	1.75	1.09	0.50	0.53	0.58	0.79	0.99	1.12	1.29	1.40	1.41	1.39	1.35
FDEC, 07/2013	2.18	1.75	1.09	0.50	0.53	0.58	0.80	0.97	1.11	1.30	1.40	1.41	1.39	1.35
Net Change in Population														
FDEC, 02/2013	384.9	316.0	200.7	92.5	99.0	108.7	149.9	189.0	214.4	251.6	275.2	282.3	281.2	277.4
FDEC, 07/2013	384.9	316.0	200.7	92.5	99.0	108.3	150.5	185.1	212.7	251.8	275.0	282.3	281.3	277.8
Households														
FDEC, 02/2013	7,170.9	7,288.9	7,357.1	7,383.1	7,411.4	7,451.4	7,517.1	7,602.2	7,697.2	7,805.4	7,920.4	8,036.3	8,150.2	8,261.3
FDEC, 07/2013	7,170.9	7,288.9	7,357.1	7,383.1	7,411.4	7,451.2	7,517.2	7,600.7	7,695.1	7,803.4	7,918.4	8,034.2	8,148.1	8,259.4
Growth Rate														
FDEC, 02/2013	2.20	1.65	0.93	0.35	0.38	0.54	0.88	1.13	1.25	1.41	1.47	1.46	1.42	1.36
FDEC, 07/2013	2.20	1.65	0.93	0.35	0.38	0.54	0.88	1.11	1.24	1.41	1.47	1.46	1.42	1.37
Net Change in Households														
FDEC, 02/2013	154.5	118.1	68.1	26.0	28.4	40.0	65.7	85.1	95.0	108.2	115.0	115.9	113.8	111.1
FDEC, 07/2013	154.5	118.1	68.1	26.0	28.3	39.8	65.9	83.6	94.4	108.3	114.9	115.9	113.8	111.3
Household Size														
FDEC, 02/2013	2.519	2.521	2.525	2.529	2.533	2.534	2.531	2.528	2.525	2.522	2.520	2.519	2.518	2.518
FDEC, 07/2013	2.519	2.521	2.525	2.529	2.533	2.534	2.531	2.528	2.525	2.522	2.520	2.519	2.518	2.518
Growth Rate														
FDEC, 02/2013	-0.02	0.10	0.16	0.14	0.15	0.04	-0.09	-0.14	-0.13	-0.11	-0.07	-0.05	-0.03	-0.01
FDEC, 07/2013	-0.02	0.10	0.16	0.14	0.15	0.04	-0.09	-0.14	-0.13	-0.11	-0.07	-0.05	-0.03	-0.01
Net Migration														
FDEC, 02/2013	322.9	245.0	133.7	36.3	52.8	67.9	111.4	152.8	177.0	212.0	234.3	241.1	239.5	235.2
FDEC, 07/2013	322.9	245.0	133.7	36.3	52.7	67.5	111.8	148.7	175.6	212.5	234.4	241.3	240.4	237.8
Births														
FDEC, 02/2013	232.1	239.3	236.0	226.4	217.4	213.5	212.7	213.1	215.5	219.0	222.5	225.7	229.5	235.1
FDEC, 07/2013	232.1	239.3	236.0	226.4	217.4	213.5	212.9	213.3	215.3	218.7	222.2	225.4	229.3	235.0
Deaths														
FDEC, 02/2013	170.1	168.3	169.0	170.2	171.1	172.7	174.2	176.9	178.2	179.4	181.6	184.5	187.8	192.9
FDEC, 07/2013	170.1	168.3	169.0	170.2	171.1	172.7	174.3	176.9	178.1	179.4	181.6	184.5	188.4	194.9
Net Natural Increase														
FDEC, 02/2013	62.0	71.0	67.0	56.2	46.3	40.8	38.5	36.2	37.3	39.6	40.9	41.2	41.7	42.3
FDEC, 07/2013	62.0	71.0	67.0	56.2	46.3	40.8	38.7	36.4	37.2	39.3	40.6	40.9	40.9	40.1

FISCAL YEAR  
FORECAST TABLES

Fiscal Year Data Table

	<u>2019-20</u>	<u>2020-21</u>	<u>2021-22</u>
Population			
FDEC, 02/2013	21,073.4	21,342.5	21,607.0
FDEC, 07/2013	21,069.2	21,338.8	21,603.8
Growth Rate			
FDEC, 02/2013	1.31	1.28	1.24
FDEC, 07/2013	1.32	1.28	1.24
Net Change in Population			
FDEC, 02/2013	273.4	269.0	264.5
FDEC, 07/2013	273.9	269.6	265.0
Households			
FDEC, 02/2013	8,370.4	8,478.1	8,584.4
FDEC, 07/2013	8,368.7	8,476.6	8,583.1
Growth Rate			
FDEC, 02/2013	1.32	1.29	1.25
FDEC, 07/2013	1.32	1.29	1.26
Net Change in Households			
FDEC, 02/2013	109.2	107.6	106.3
FDEC, 07/2013	109.4	107.9	106.5
Household Size			
FDEC, 02/2013	2.518	2.517	2.517
FDEC, 07/2013	2.518	2.517	2.517
Growth Rate			
FDEC, 02/2013	-0.01	-0.01	-0.01
FDEC, 07/2013	-0.01	-0.01	-0.01
Net Migration			
FDEC, 02/2013	231.7	230.7	229.8
FDEC, 07/2013	236.1	235.6	234.8
Births			
FDEC, 02/2013	241.0	243.5	245.0
FDEC, 07/2013	240.5	243.3	244.8
Deaths			
FDEC, 02/2013	199.3	205.2	210.3
FDEC, 07/2013	202.7	209.3	214.5
Net Natural Increase			
FDEC, 02/2013	41.7	38.3	34.7
FDEC, 07/2013	37.8	34.0	30.2

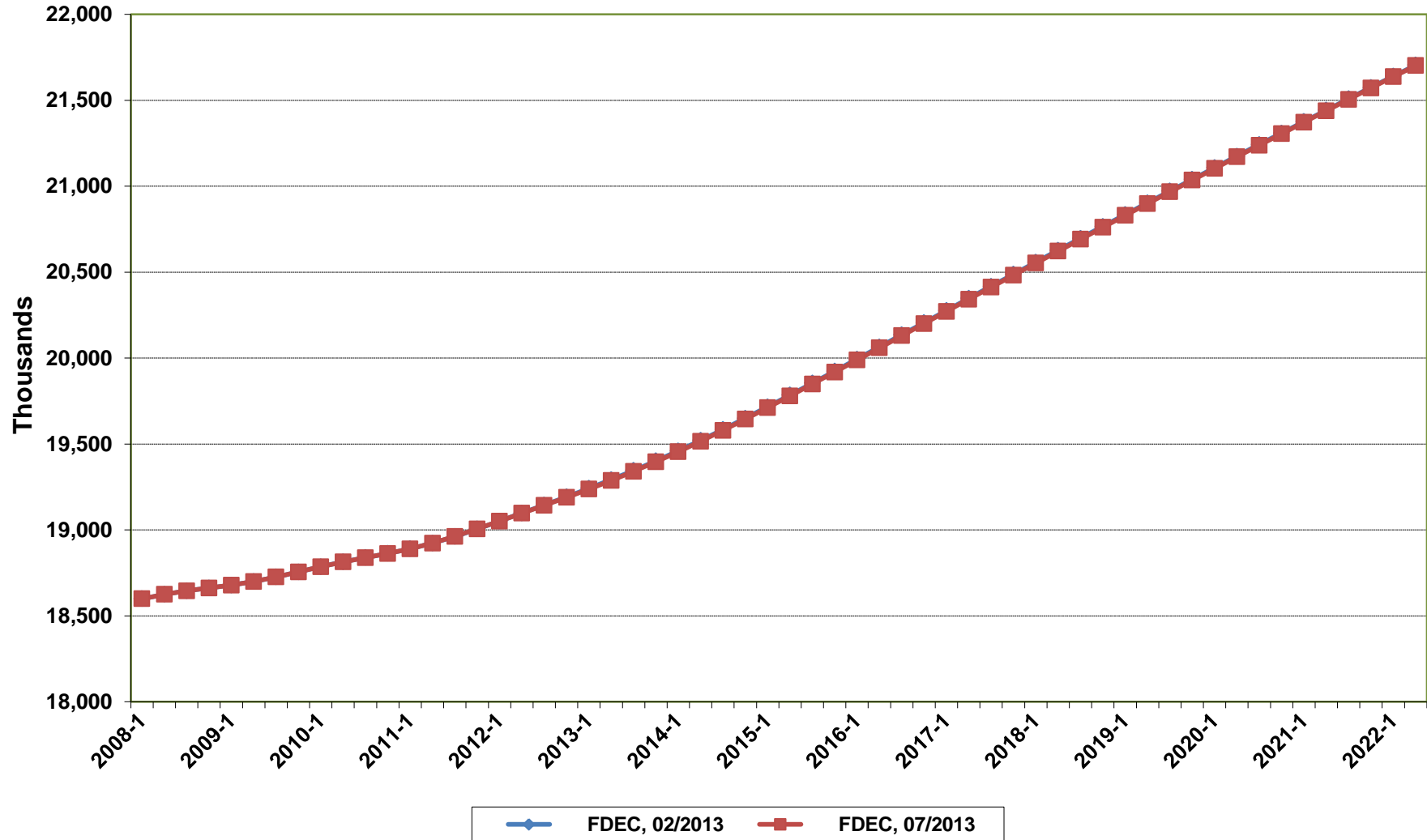
# **Florida Demographic Estimating Conference**

## **Charts**

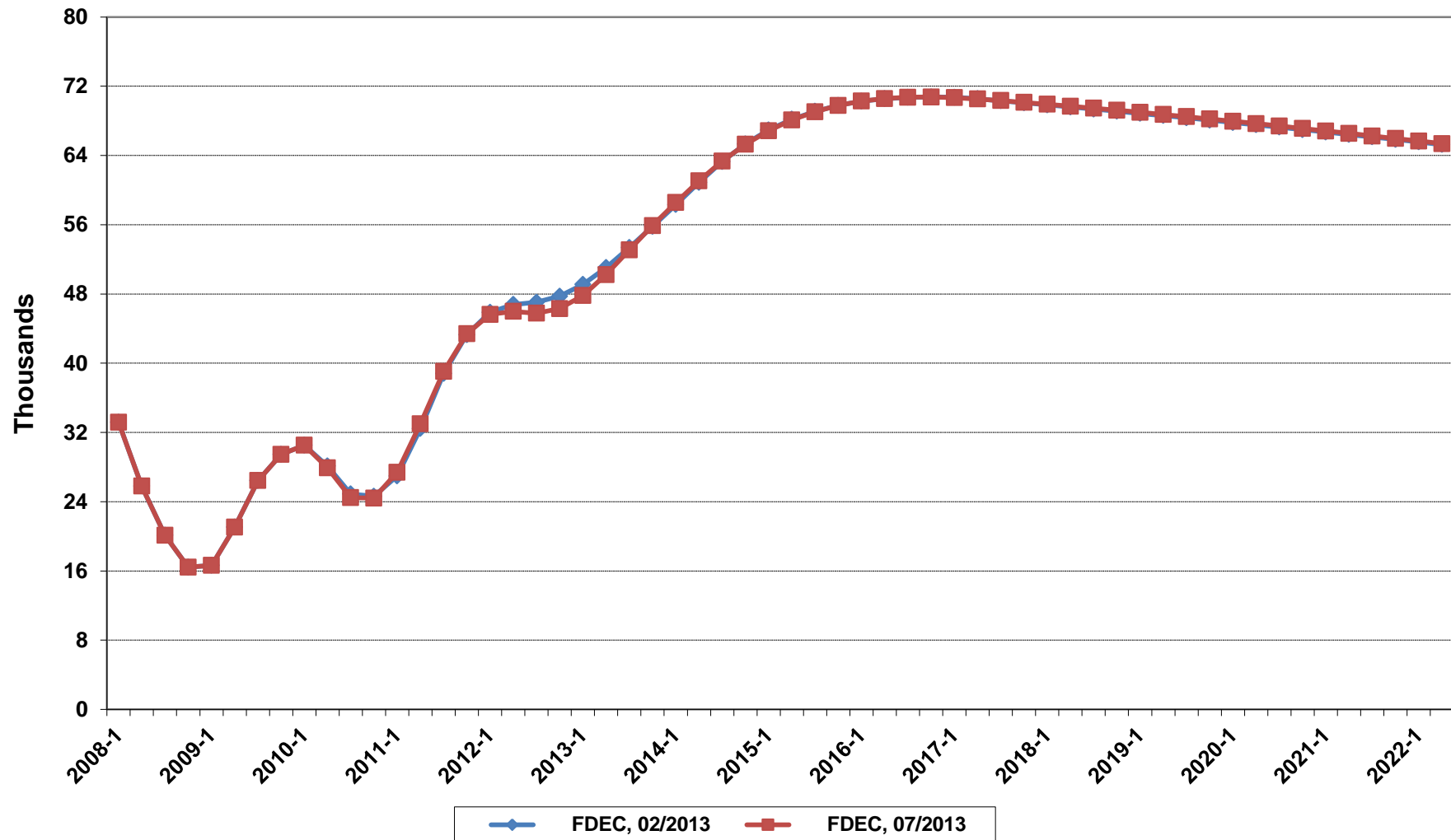
Post-Conference Packet

**July 11, 2013**

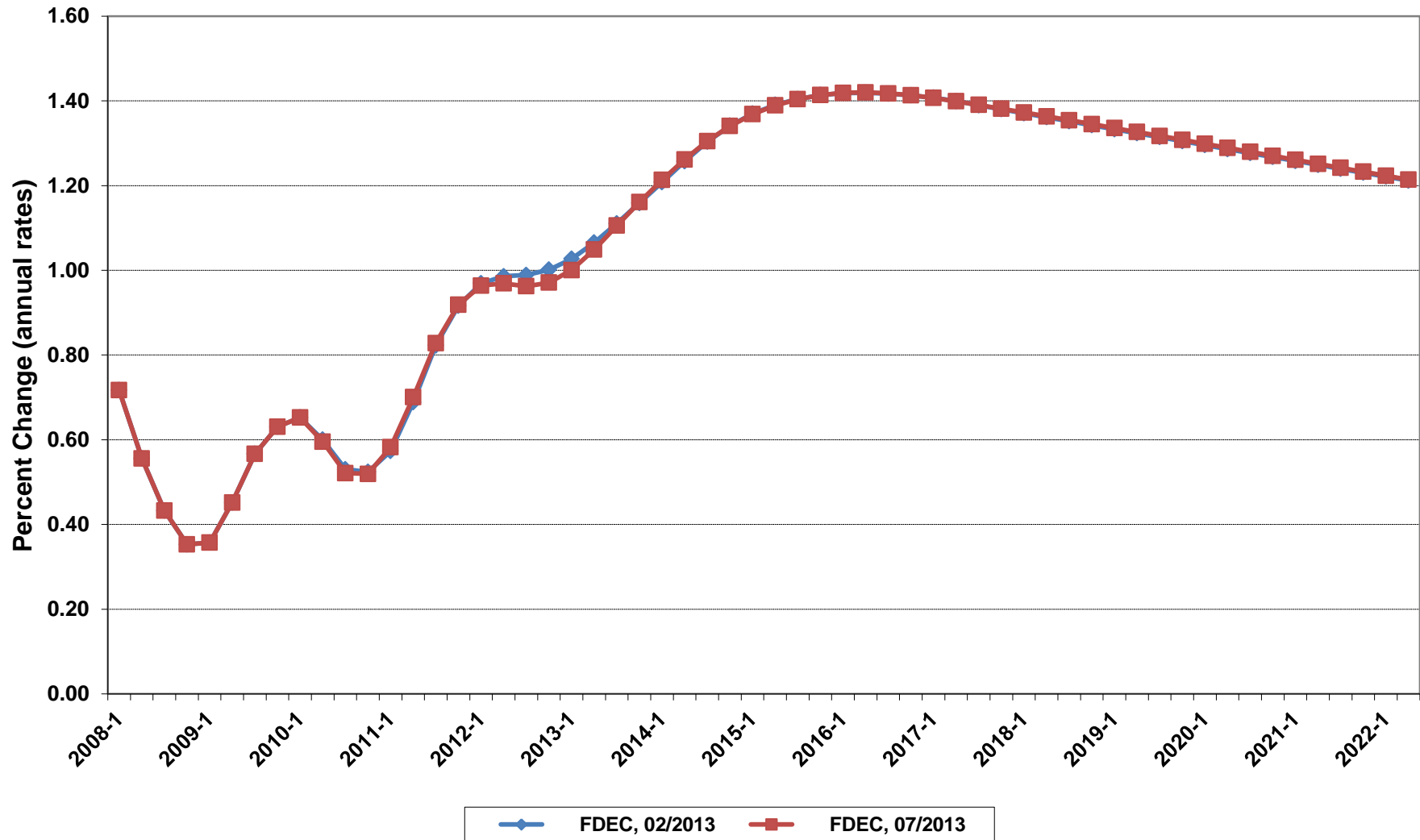
# Florida Resident Population



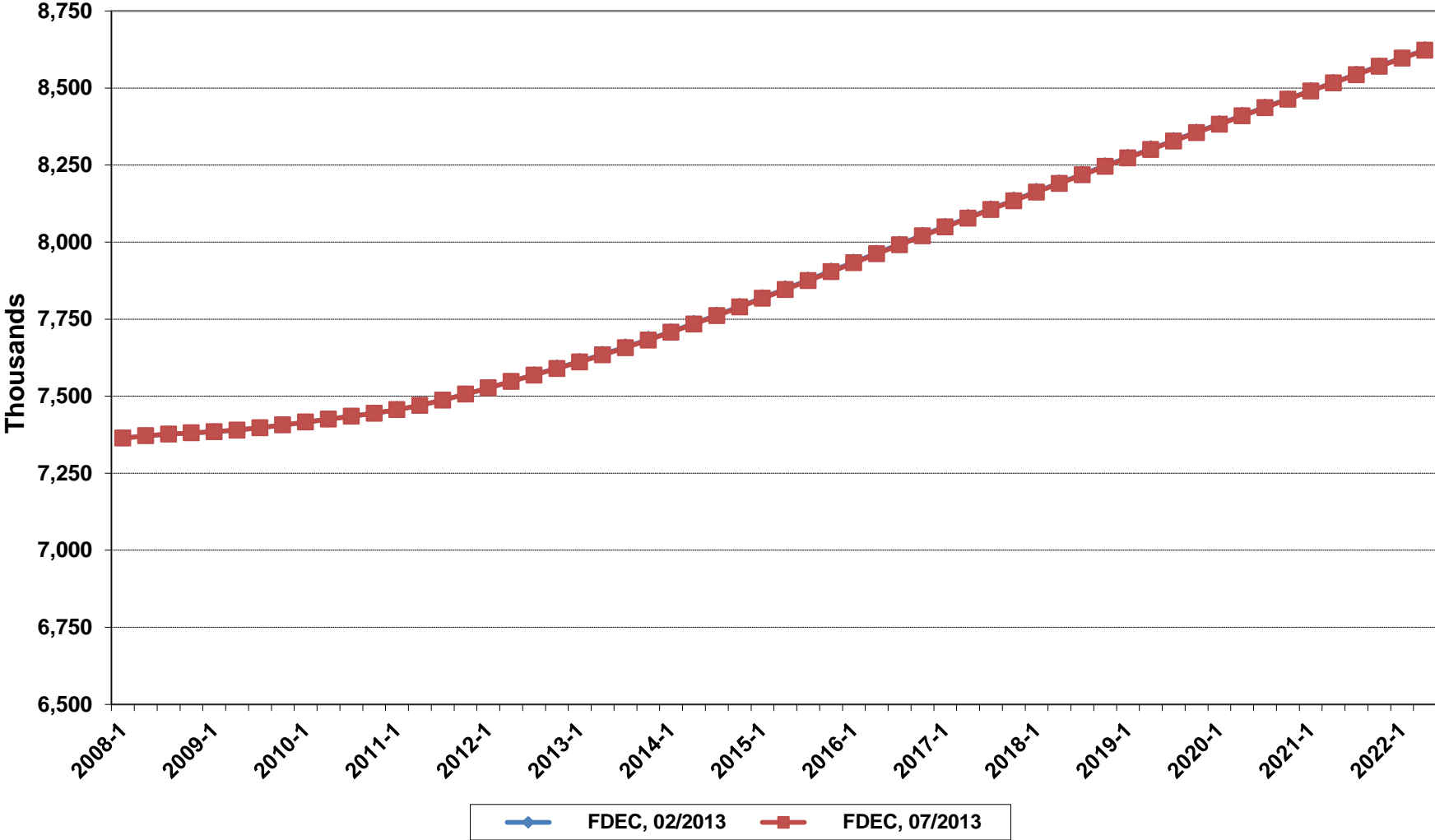
# Net Change In Florida Resident Population



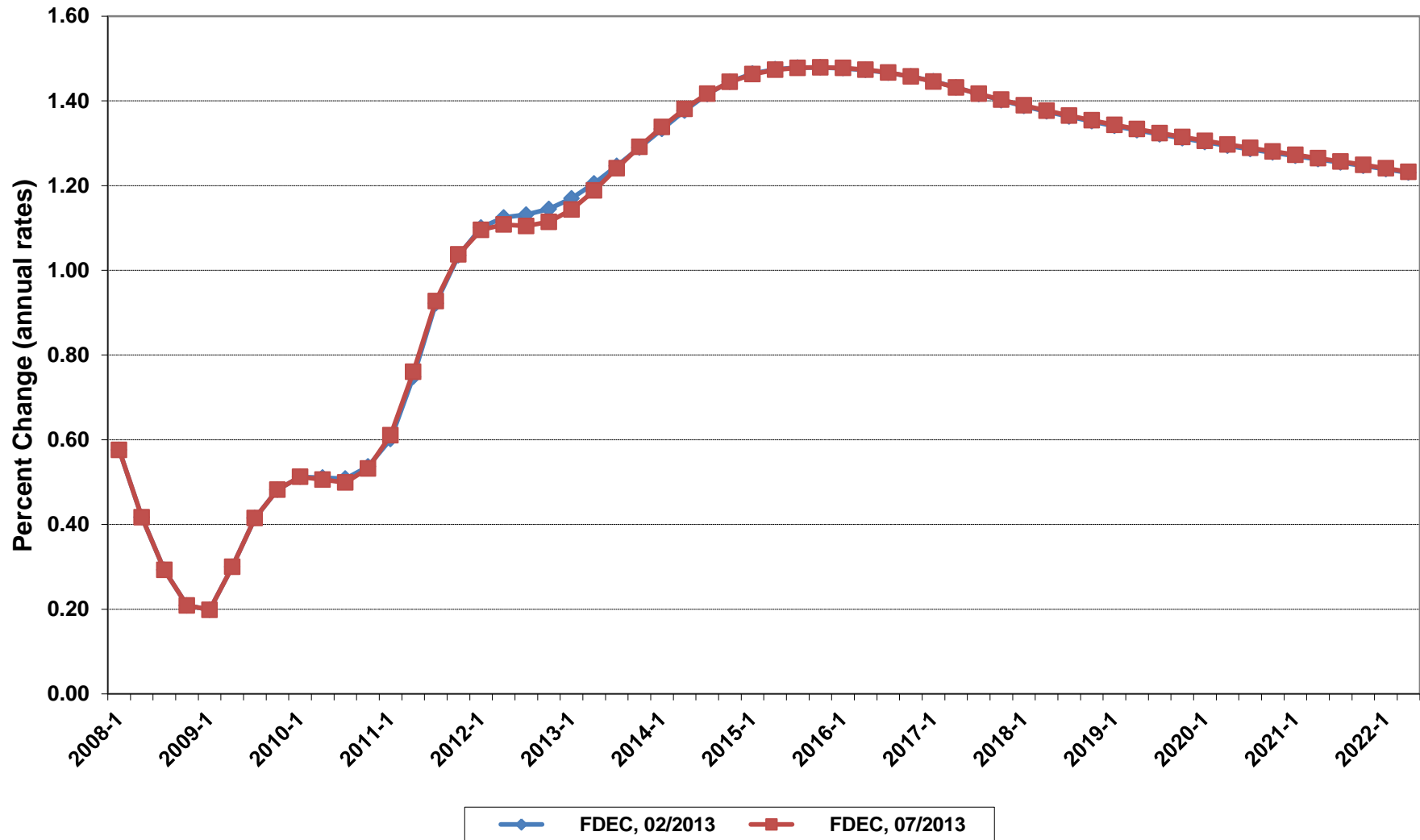
# Growth In Florida Resident Population



# Florida Resident Households

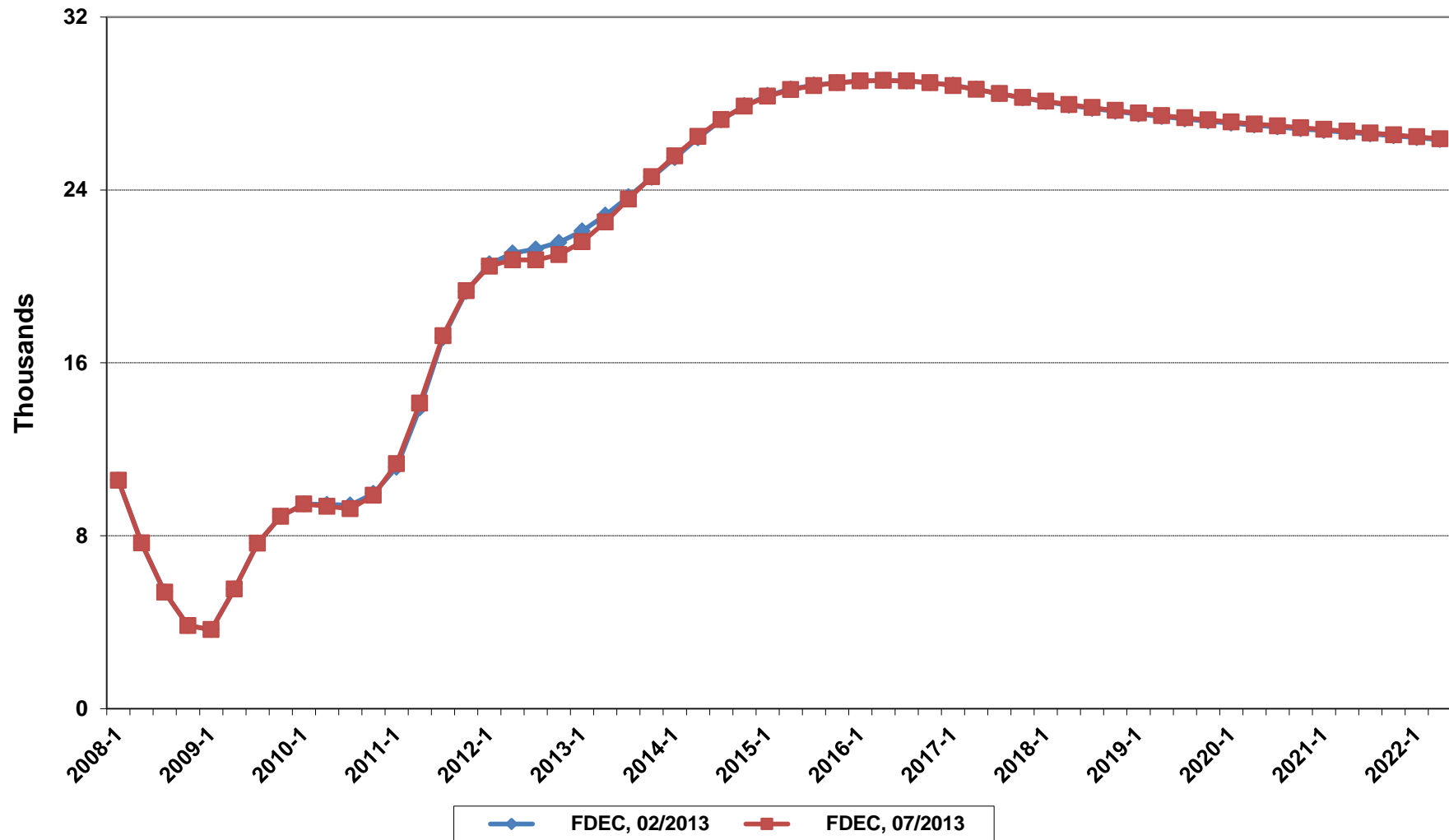


# Growth In Florida Resident Households

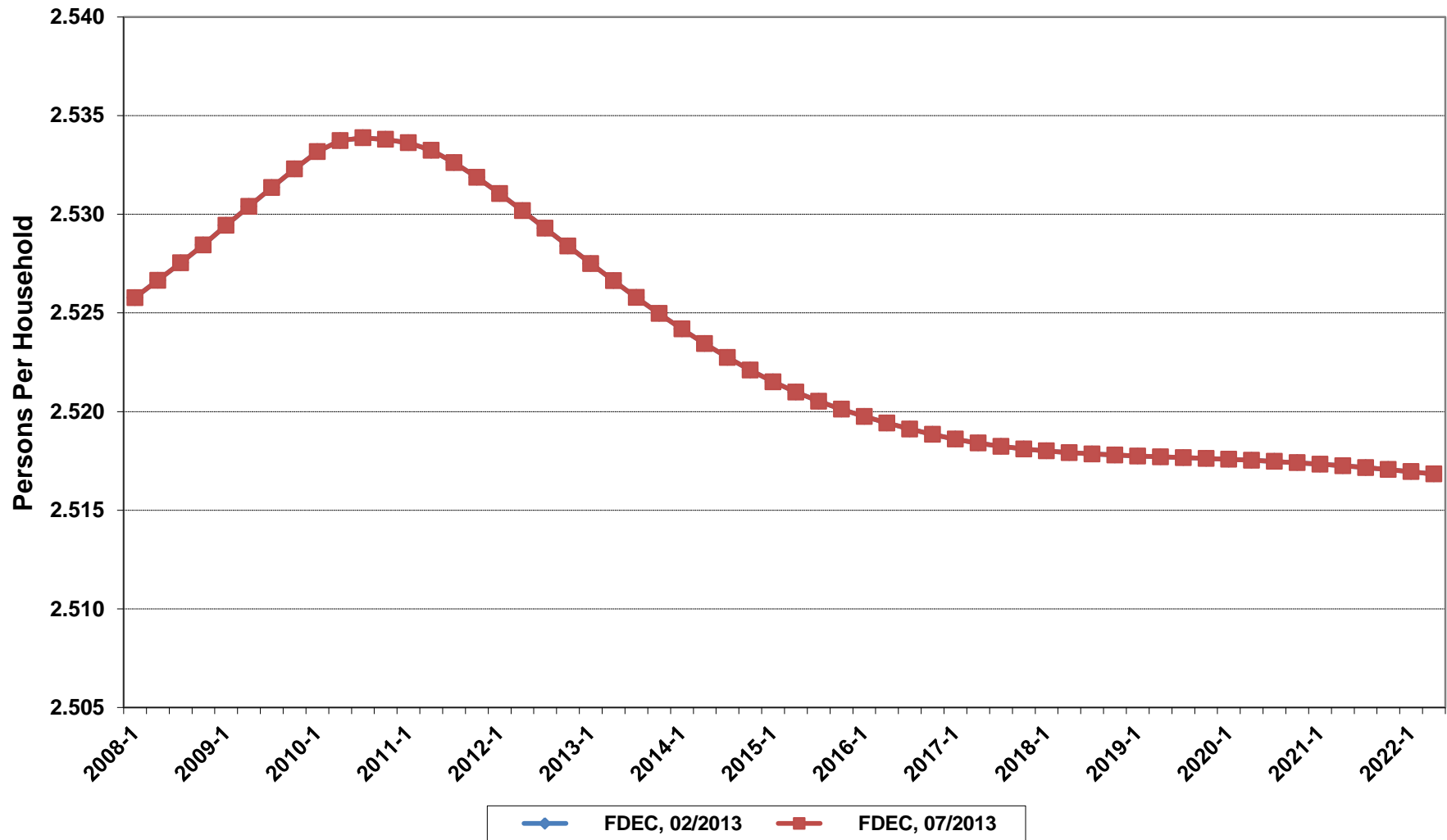




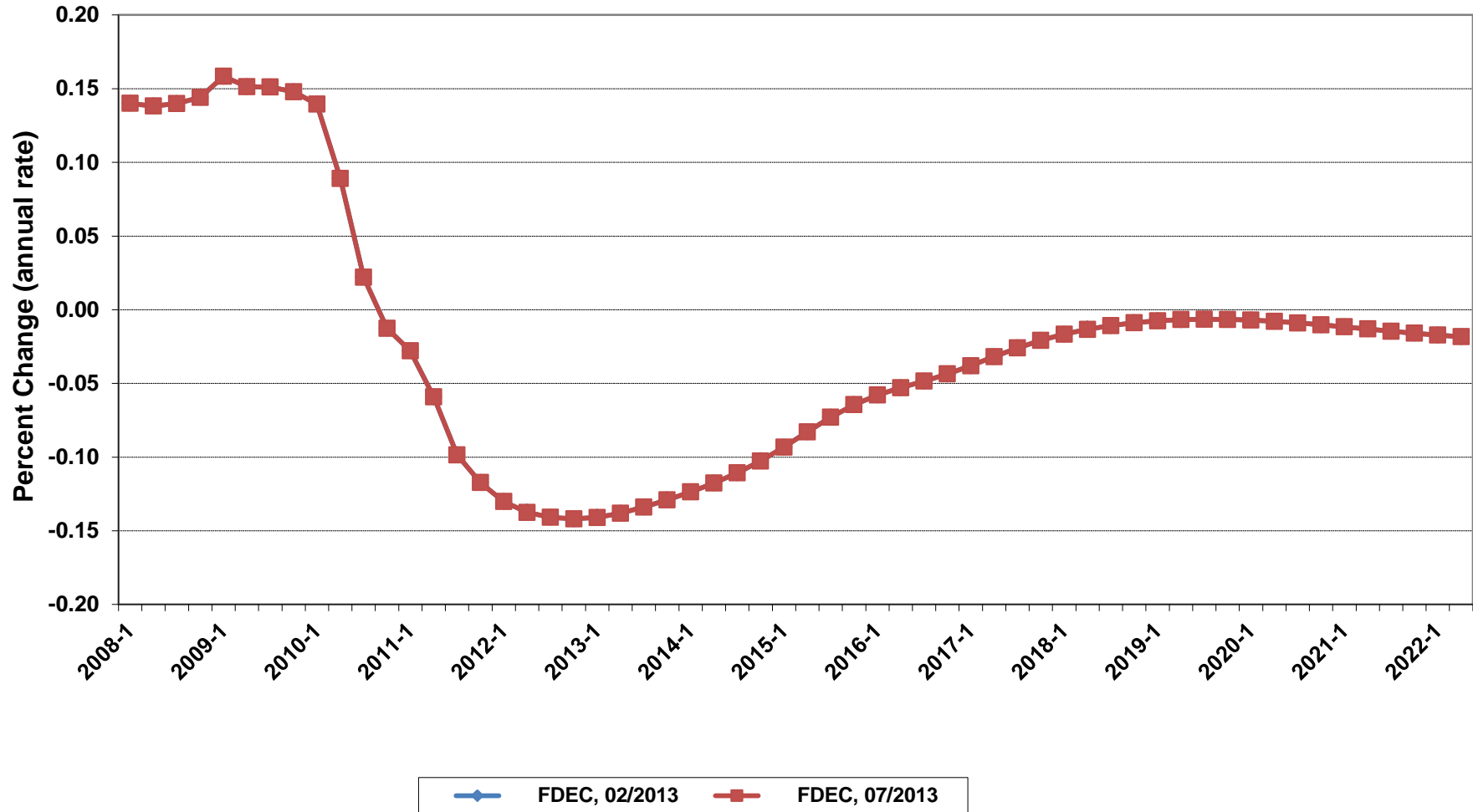
# Net Change In Florida Resident Households



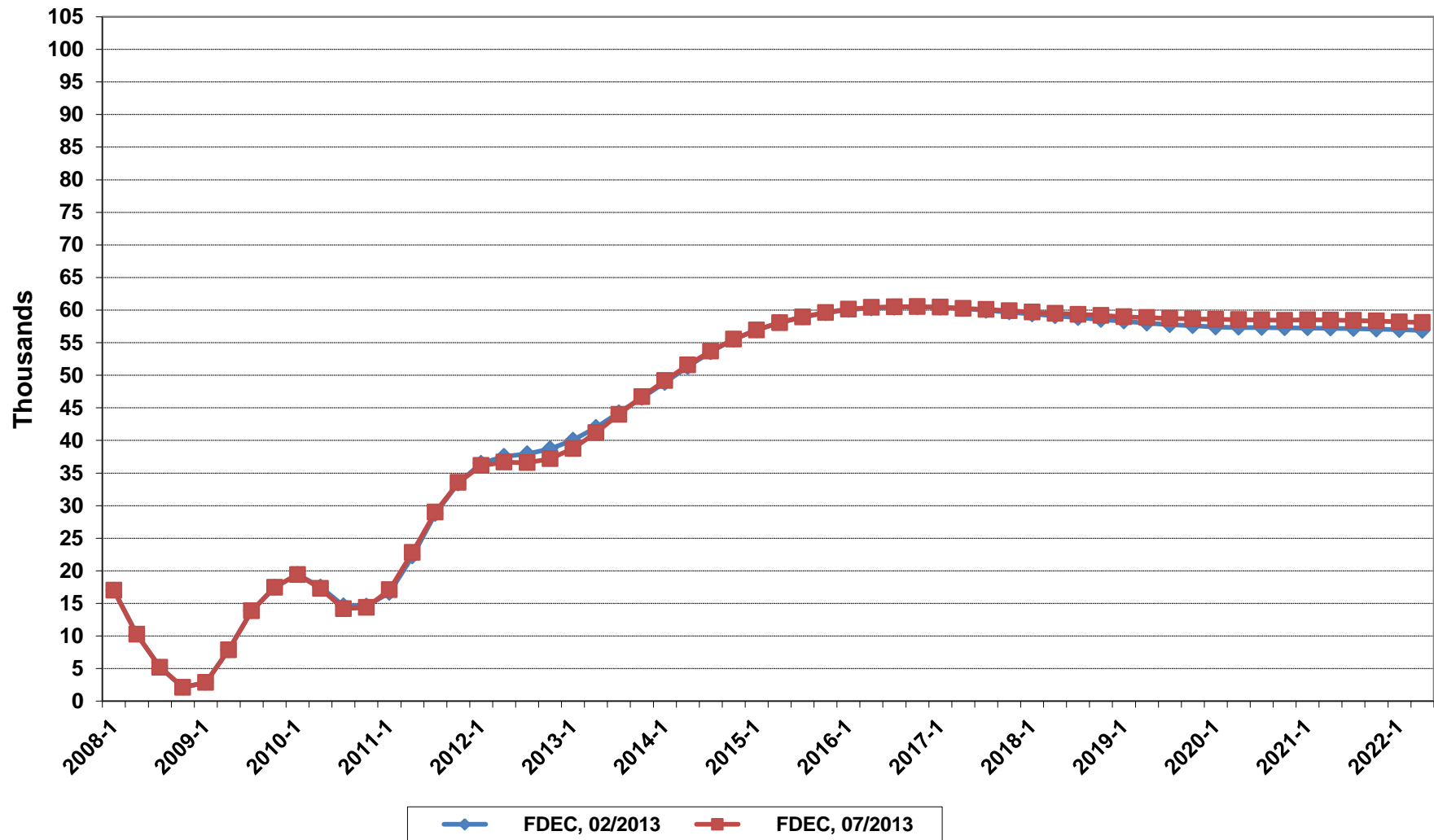
# Florida Average Household Size



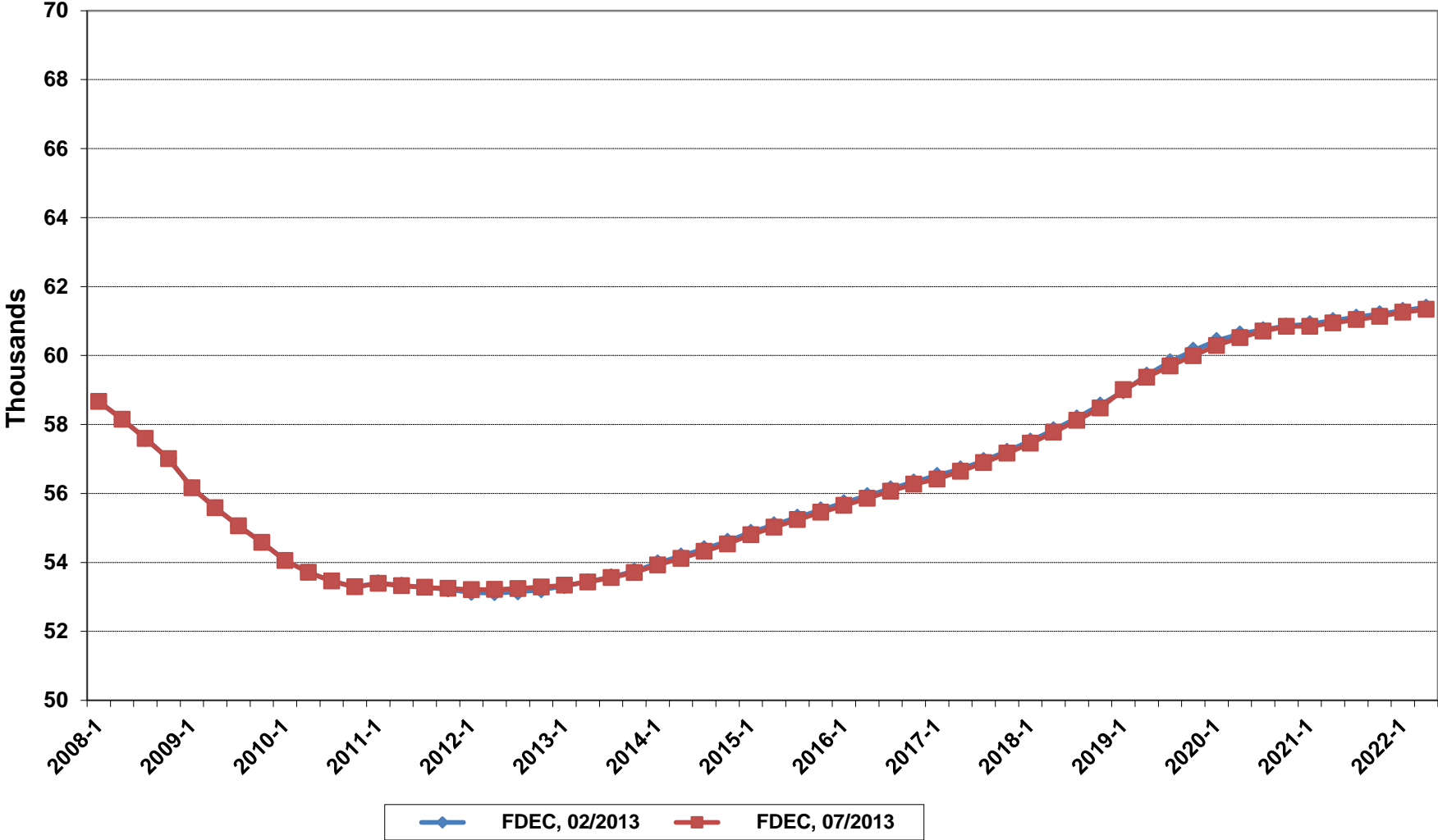
# Growth In Florida Household Size



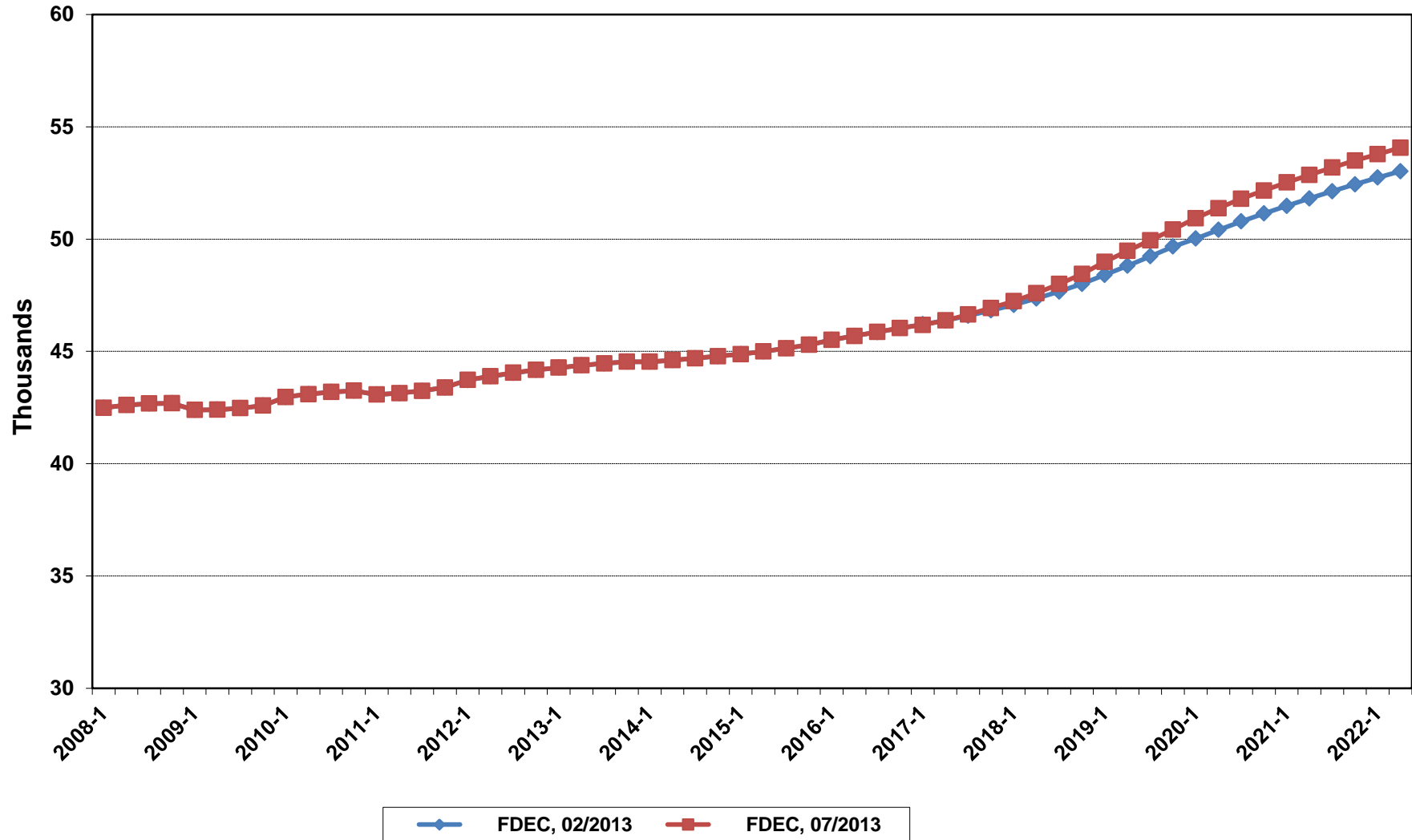
# Florida Net Migration



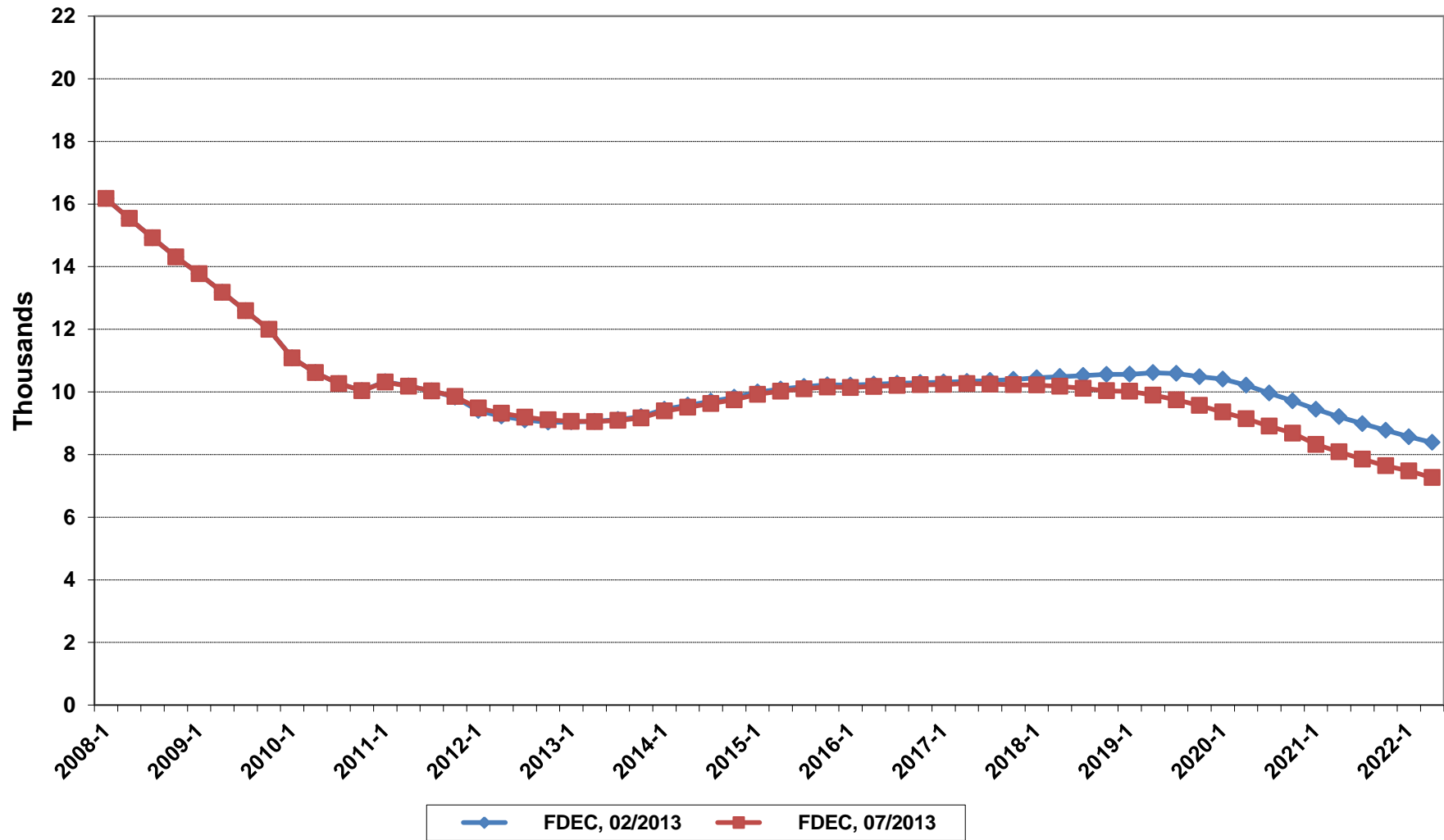
# Florida Resident Births



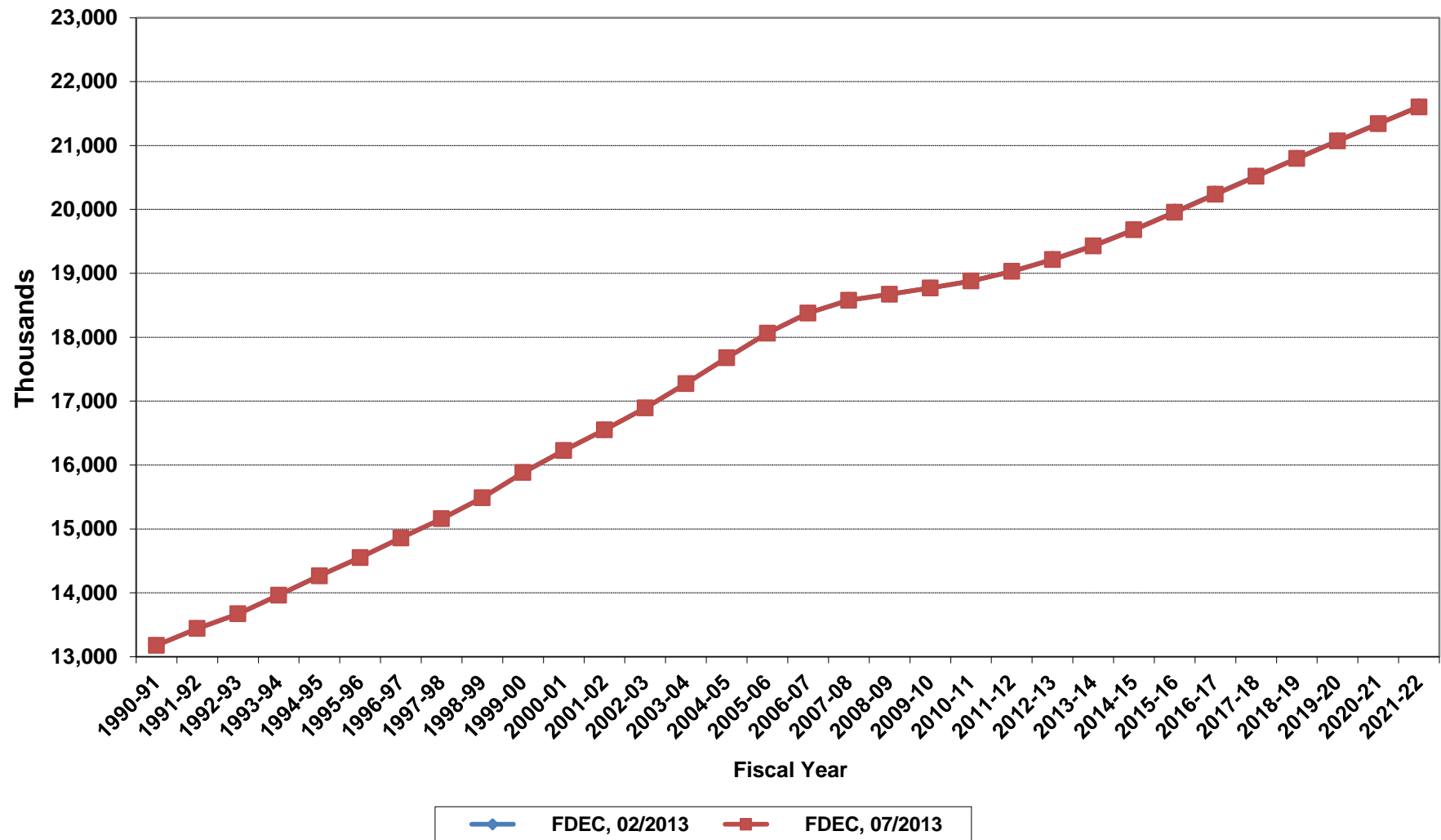
# Florida Resident Deaths



# Florida Net Natural Increase

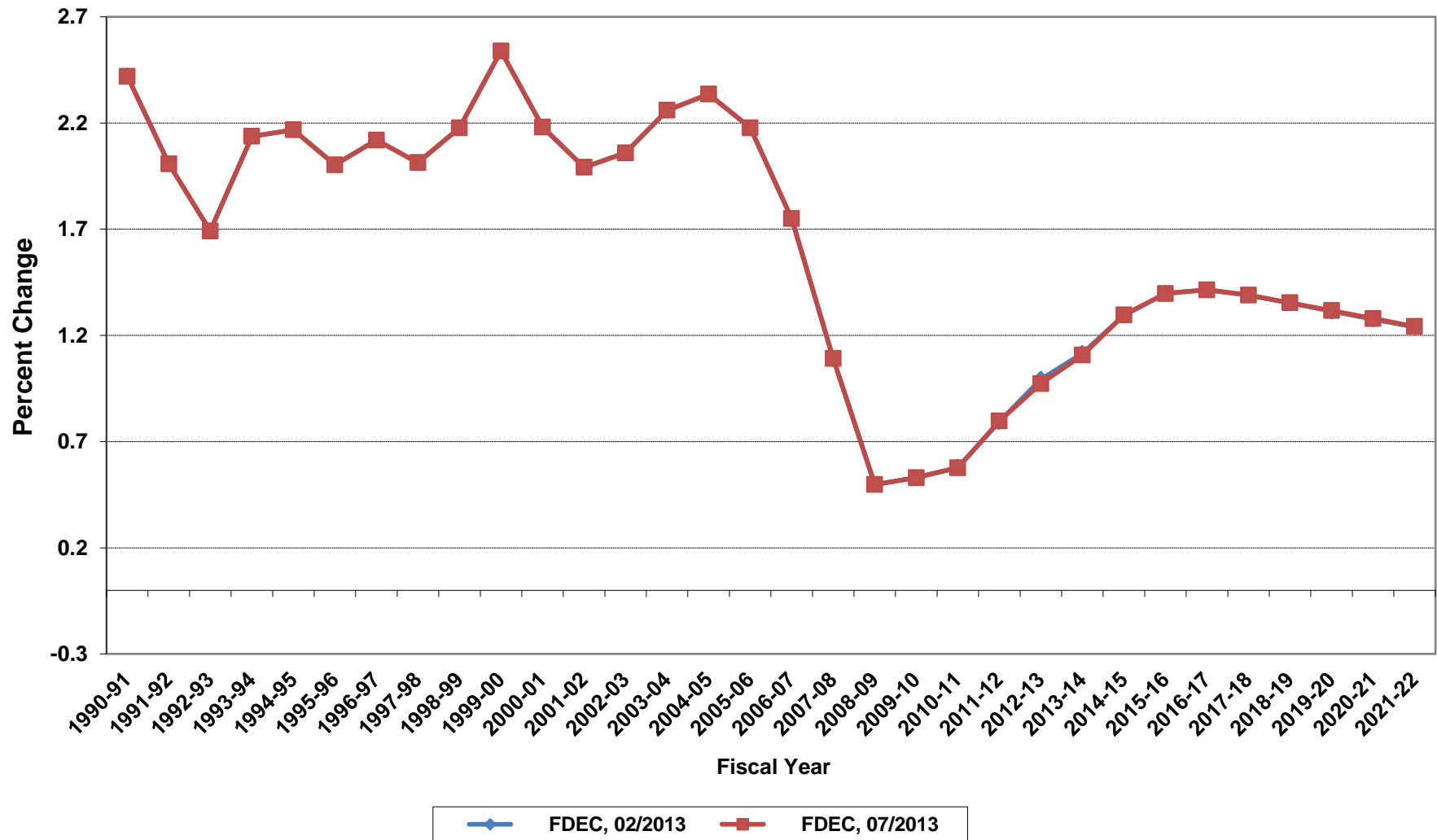


# Florida Resident Population

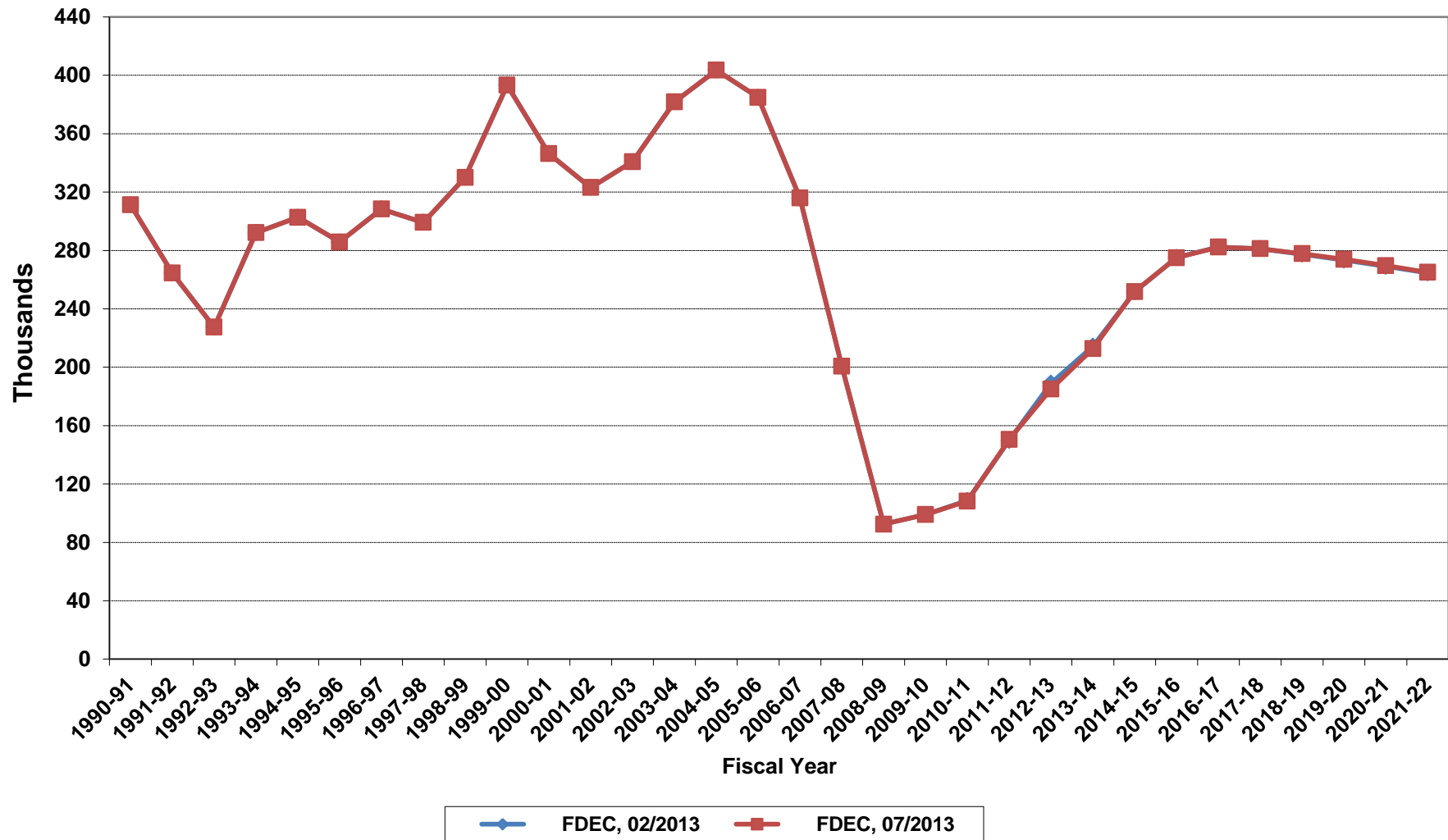




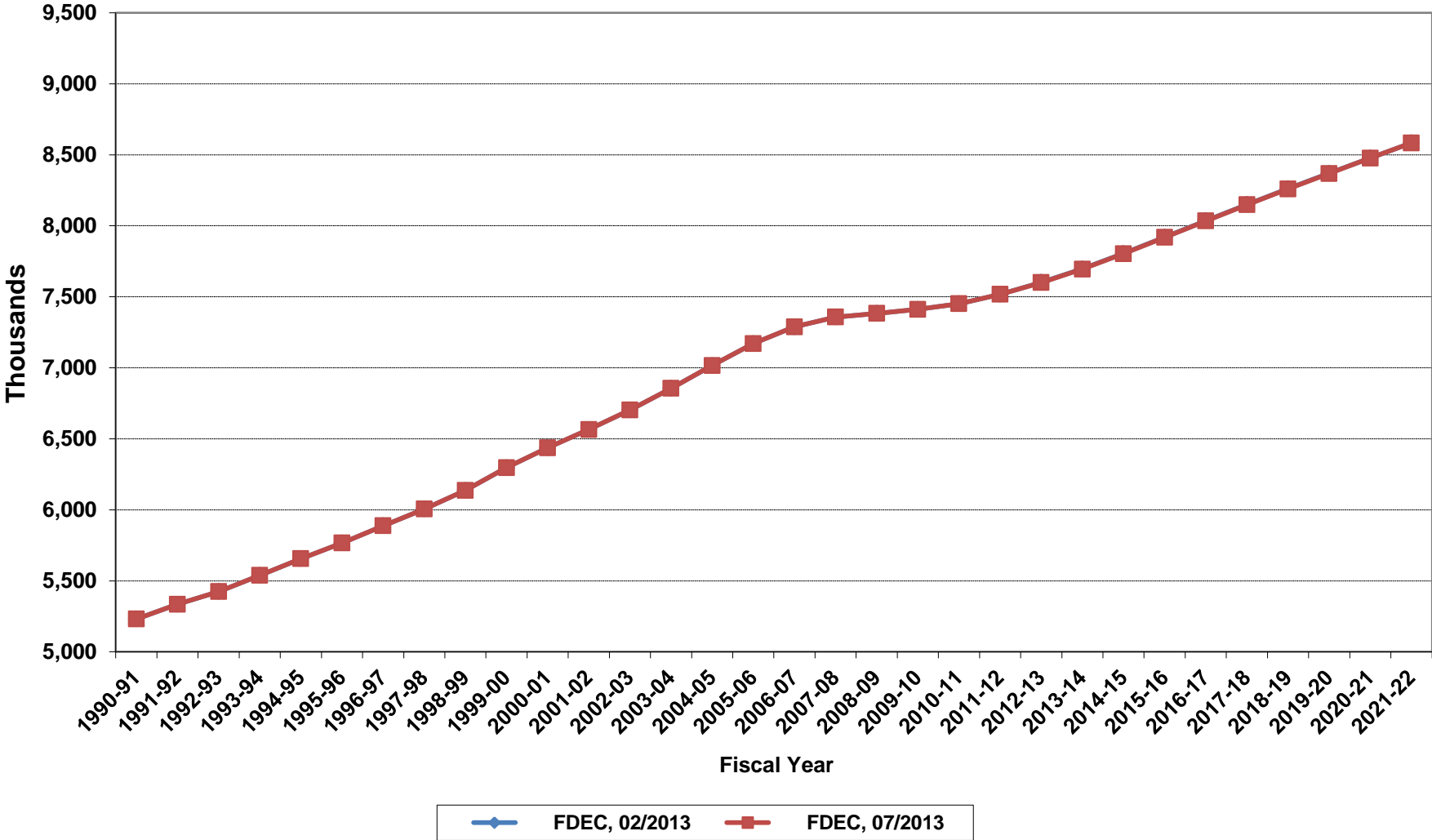
# Growth In Florida Resident Population



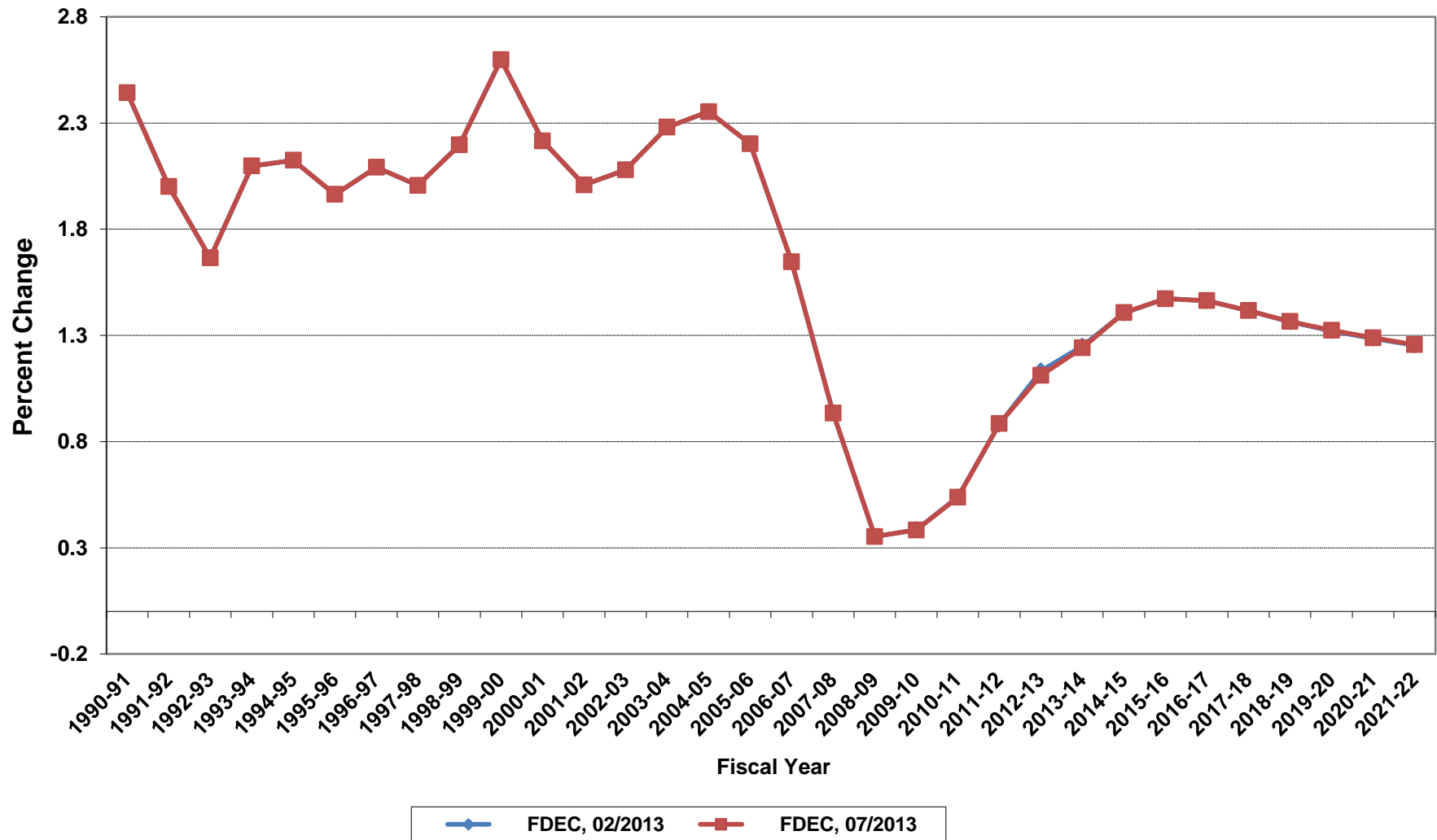
# Net Change In Florida Resident Population



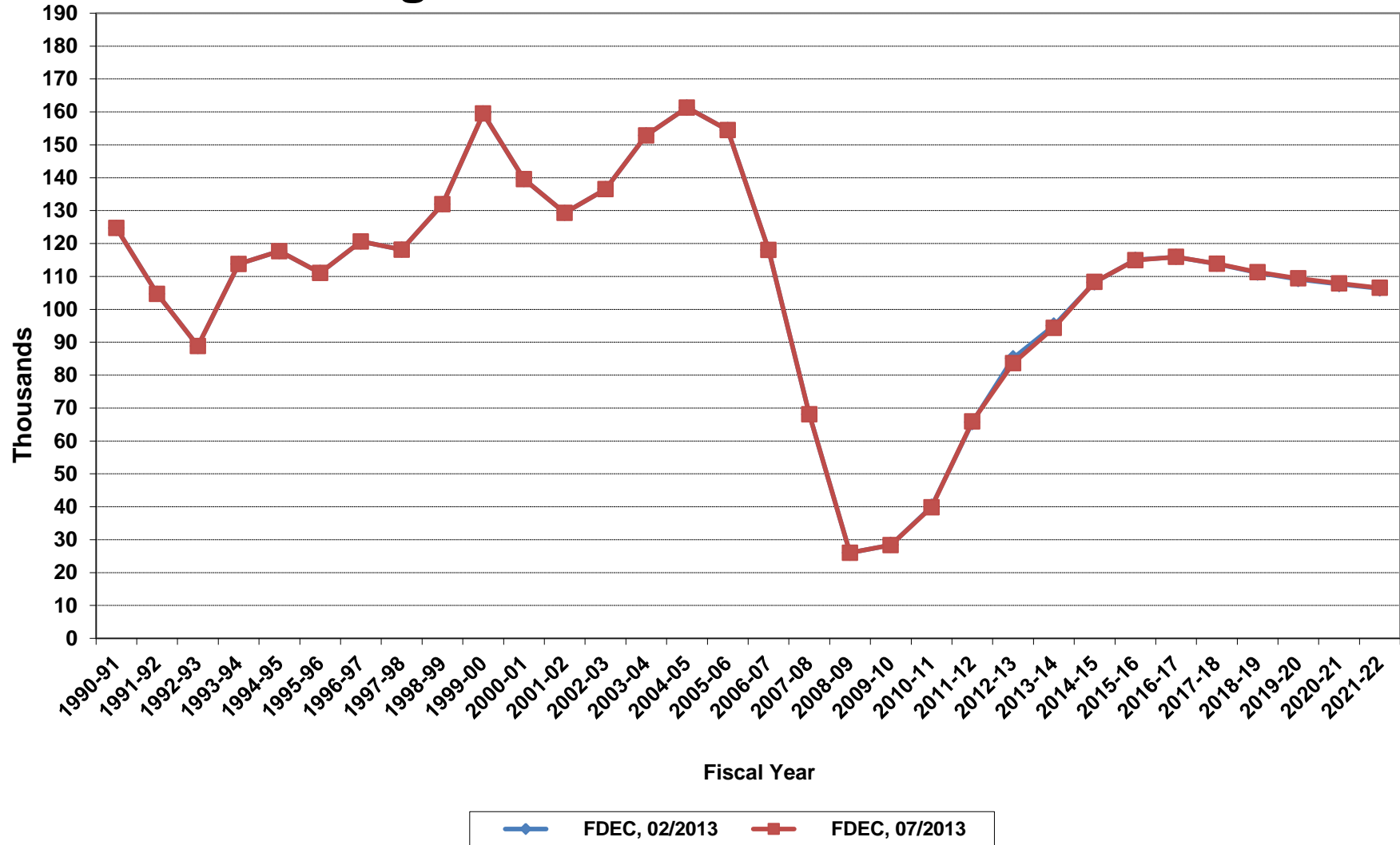
# Florida Resident Households



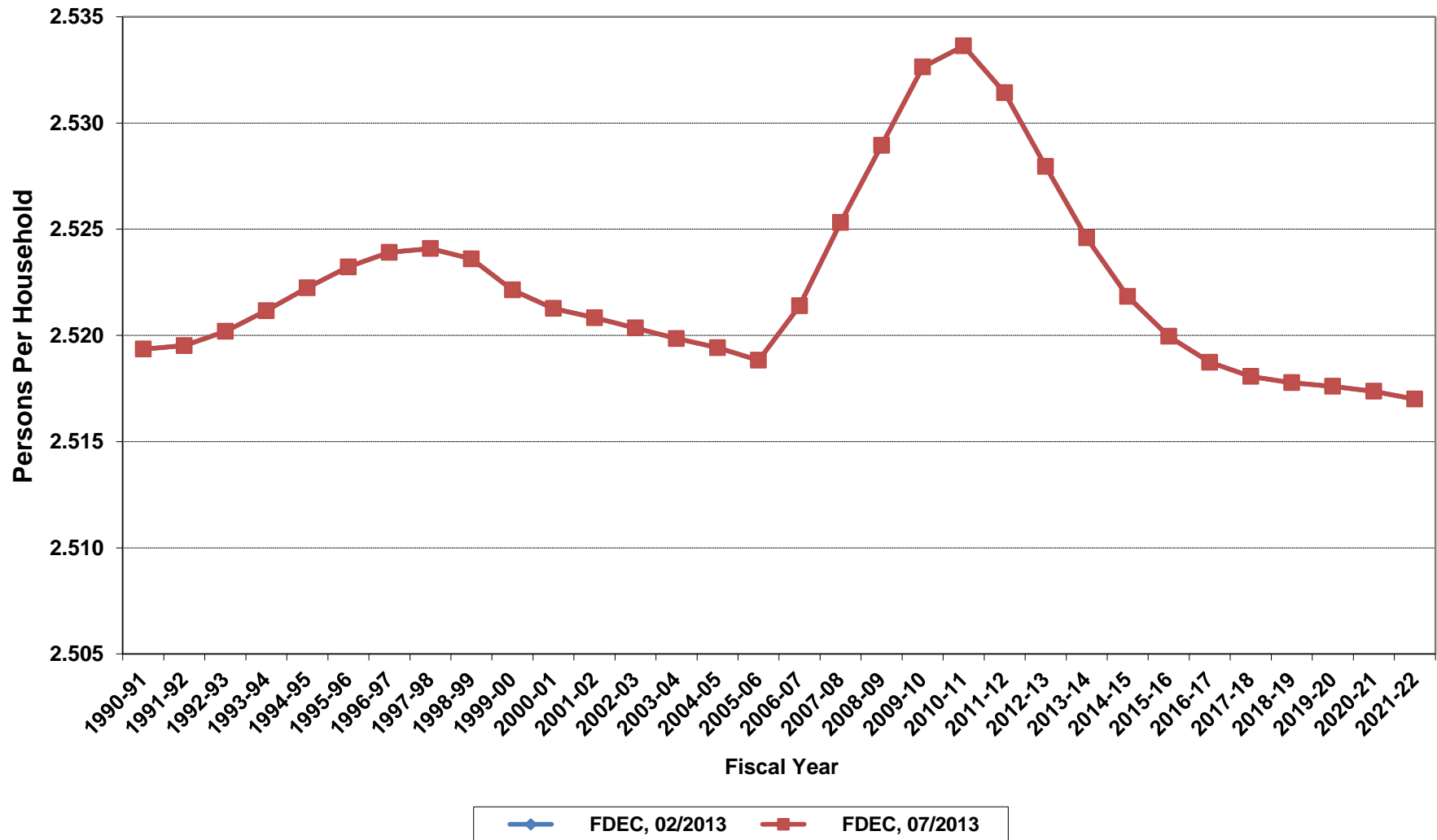
# Growth In Florida Resident Households



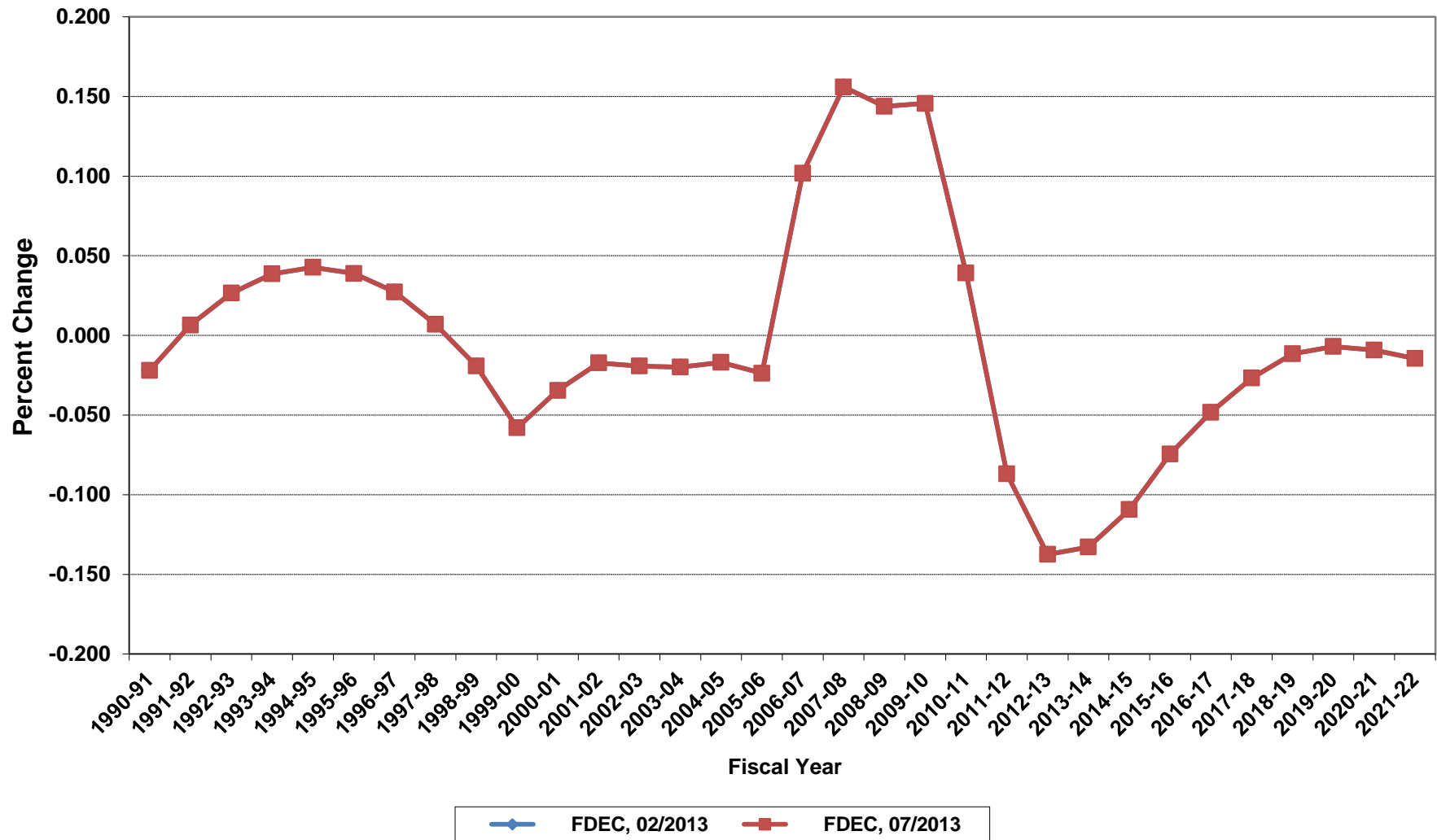
# Net Change In Florida Resident Households



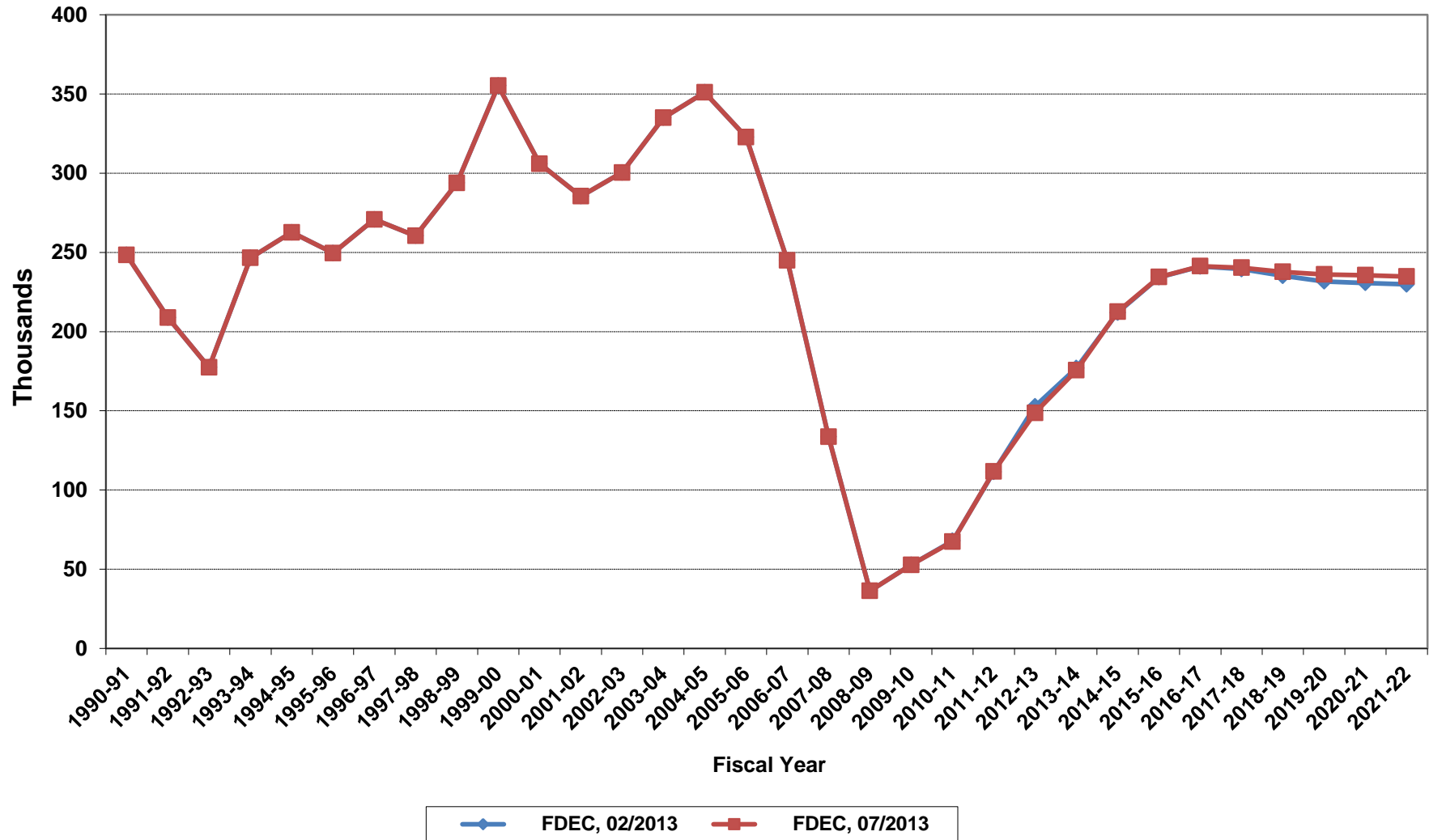
# Average Florida Household Size



# Growth In Average Florida Household Size

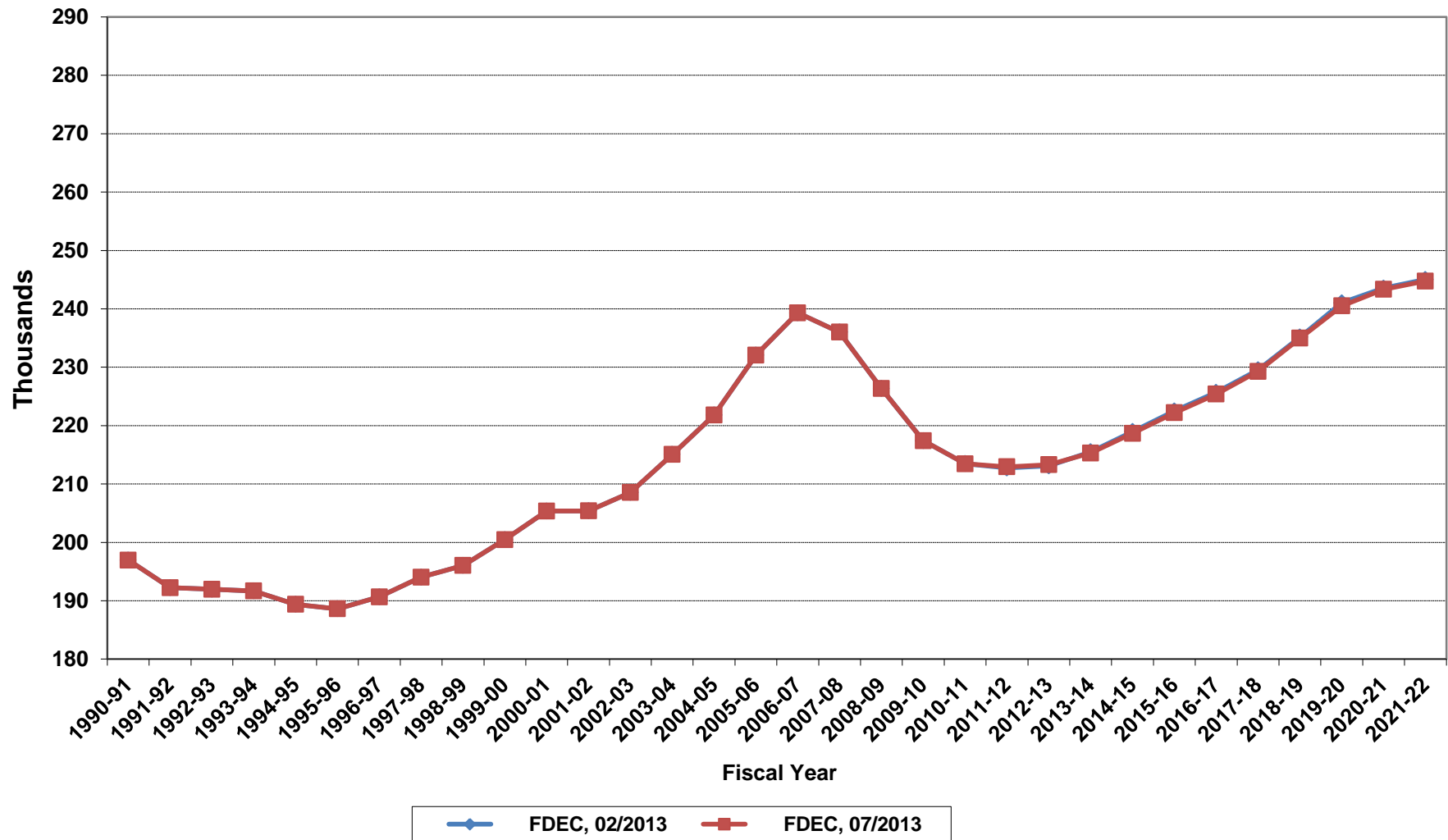


# Florida Net Migration

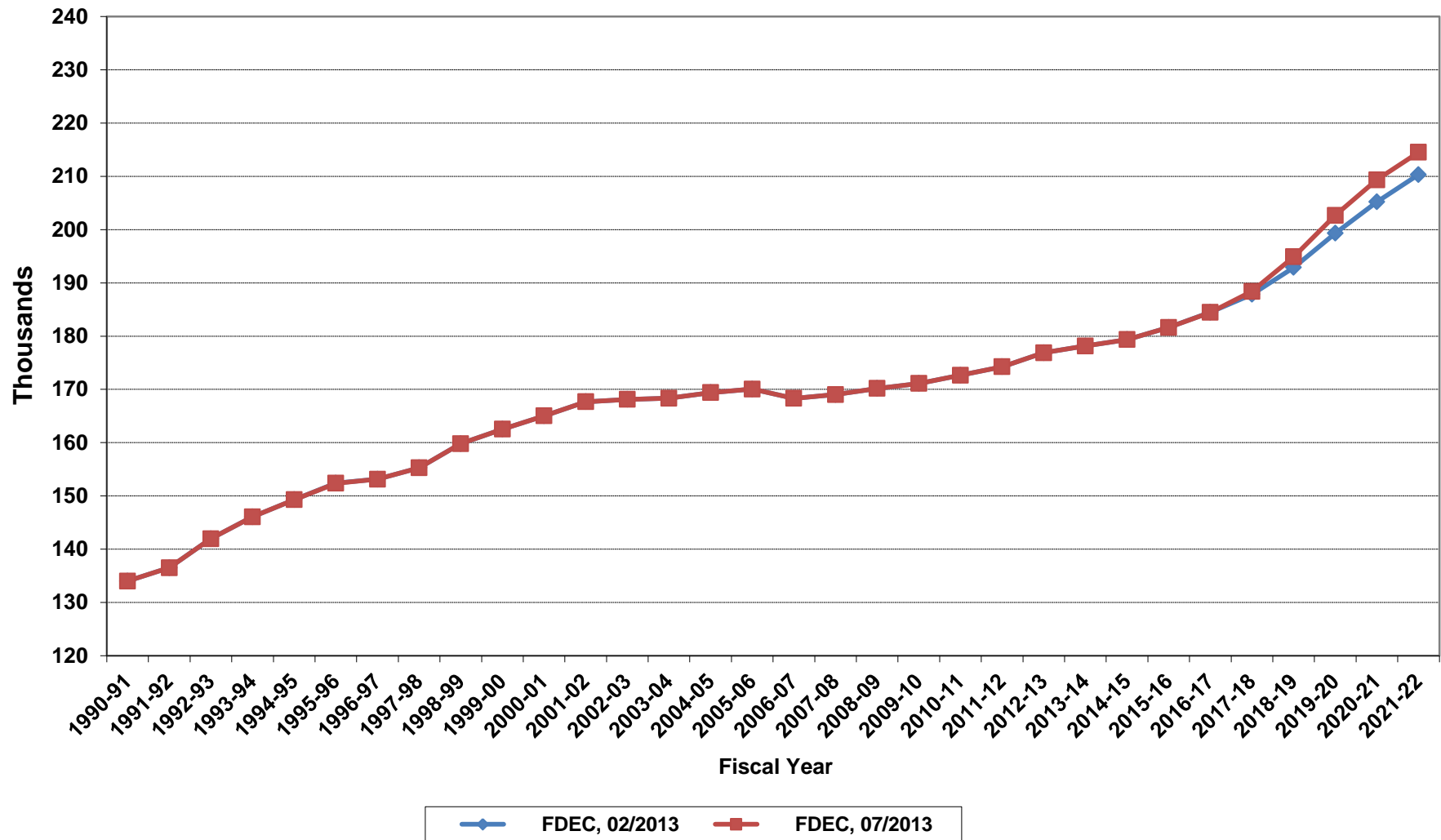




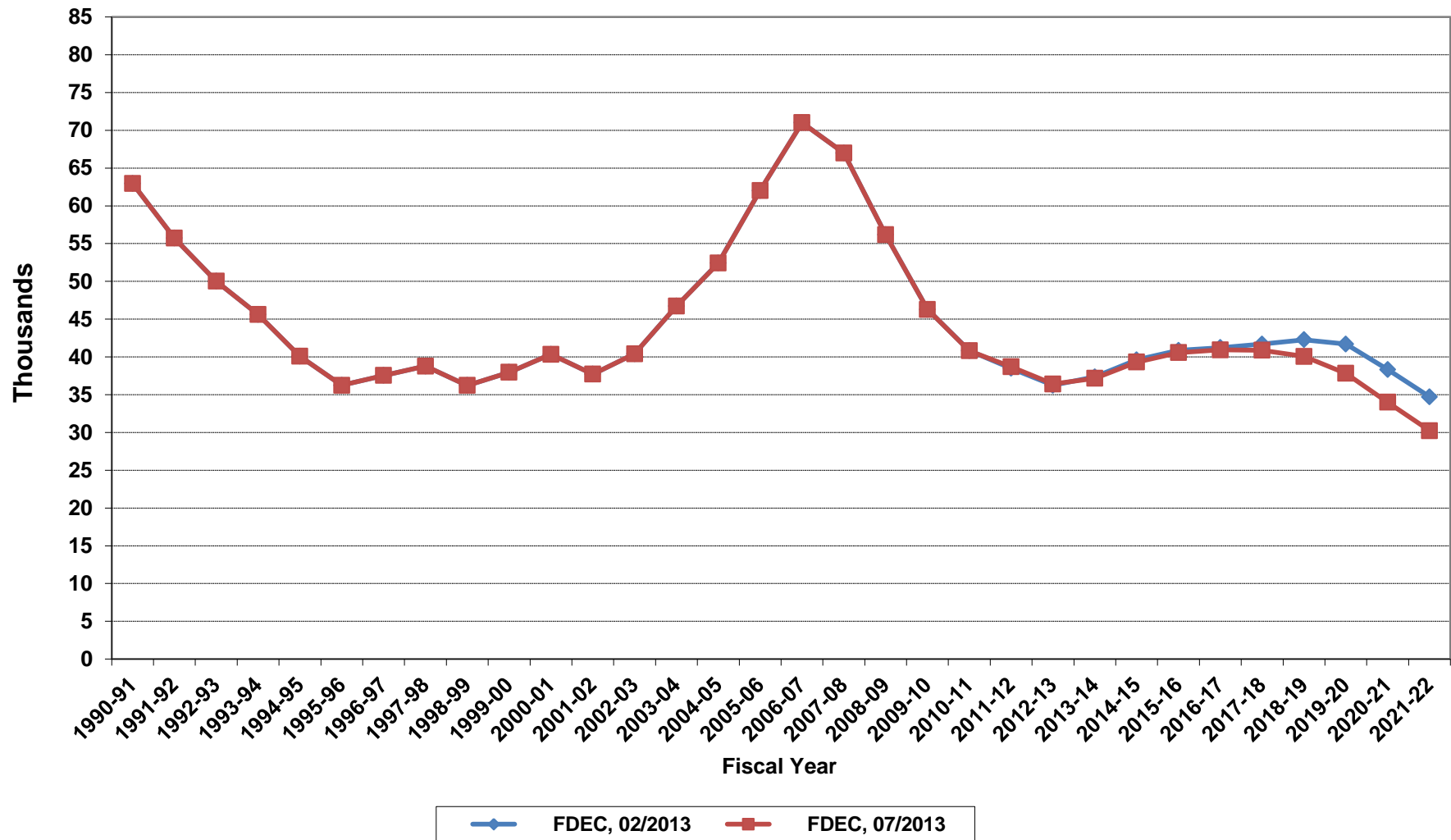
# Florida Resident Live Births



# Florida Resident Deaths



# Florida Net Natural Increase



**Florida Population and Components of Change**

<b>Fiscal Year</b>	<b>Population (End of Fiscal Year)</b>	<b>Growth Rate</b>	<b>Annual Change in Population</b>	<b>Births</b>	<b>Deaths</b>	<b>Net Natural Increase</b>	<b>Net Migration</b>
1950 - 51	2,981,346	6.50%	181,931	67,486	27,670	39,816	142,115
1951 - 52	3,155,442	5.84%	174,096	72,383	28,942	43,441	130,655
1952 - 53	3,312,521	4.98%	157,079	76,954	29,761	47,193	109,886
1953 - 54	3,504,323	5.79%	191,802	82,725	31,055	51,670	140,132
1954 - 55	3,747,400	6.94%	243,077	86,643	32,176	54,467	188,610
1955 - 56	4,046,062	7.97%	298,662	92,941	34,932	58,009	240,653
1956 - 57	4,370,045	8.01%	323,983	100,990	38,269	62,721	261,262
1957 - 58	4,629,510	5.94%	259,465	105,972	41,911	64,061	195,404
1958 - 59	4,812,270	3.95%	182,760	110,409	43,674	66,735	116,025
1959 - 60	4,998,508	3.87%	186,238	114,428	46,057	68,371	117,867
1960 - 61	5,185,913	3.75%	187,405	116,449	48,388	68,061	119,344
1961 - 62	5,367,899	3.51%	181,986	116,120	50,346	65,774	116,212
1962 - 63	5,553,522	3.46%	185,623	114,709	54,453	60,256	125,367
1963 - 64	5,728,499	3.15%	174,977	115,002	56,229	58,773	116,204
1964 - 65	5,881,195	2.67%	152,696	110,515	57,734	52,781	99,915
1965 - 66	6,065,768	3.14%	184,573	104,367	61,217	43,150	141,423
1966 - 67	6,249,674	3.03%	183,906	101,209	62,577	38,632	145,274
1967 - 68	6,441,756	3.07%	192,082	100,320	66,134	34,186	157,896
1968 - 69	6,633,546	2.98%	191,790	104,286	71,285	33,001	158,789
1969 - 70	6,861,118	3.43%	227,572	111,511	73,831	37,680	189,892
1970 - 71	7,233,583	5.43%	372,465	117,012	75,354	41,658	330,807
1971 - 72	7,681,540	6.19%	447,957	113,568	79,717	33,851	414,106
1972 - 73	8,157,883	6.20%	476,343	107,804	86,232	21,572	454,771
1973 - 74	8,515,208	4.38%	357,325	109,366	88,459	20,907	336,418
1974 - 75	8,648,587	1.57%	133,379	108,686	87,224	21,462	111,917
1975 - 76	8,782,975	1.55%	134,388	104,022	88,129	15,893	118,495
1976 - 77	8,972,678	2.16%	189,703	107,623	90,443	17,180	172,523
1977 - 78	9,225,527	2.82%	252,849	112,268	93,383	18,885	233,964
1978 - 79	9,523,728	3.23%	298,201	116,393	96,801	19,592	278,609
1979 - 80	9,914,652	4.10%	390,924	126,673	101,048	25,625	365,299
1980 - 81	10,212,969	3.01%	298,317	135,560	107,562	27,998	270,319
1981 - 82	10,492,851	2.74%	279,882	141,593	108,644	32,949	246,933
1982 - 83	10,748,466	2.44%	255,615	146,853	110,497	36,356	219,259
1983 - 84	11,065,911	2.95%	317,445	151,748	113,939	37,809	279,636
1984 - 85	11,405,533	3.07%	339,622	159,819	117,539	42,280	297,342
1985 - 86	11,740,069	2.93%	334,536	165,857	122,453	43,404	291,132
1986 - 87	12,083,241	2.92%	343,172	170,819	124,946	45,873	297,299
1987 - 88	12,410,339	2.71%	327,098	179,541	129,413	50,128	276,970
1988 - 89	12,723,719	2.53%	313,380	188,390	131,992	56,398	256,982
1989 - 90	13,017,296	2.31%	293,577	197,181	132,503	64,678	228,899
1990 - 91	13,326,892	2.38%	309,596	197,180	134,093	63,087	246,509
1991 - 92	13,552,021	1.69%	225,129	191,810	136,280	55,530	169,599
1992 - 93	13,802,571	1.85%	250,550	192,051	142,087	49,964	200,586
1993 - 94	14,120,323	2.30%	317,752	191,840	146,101	45,739	272,013
1994 - 95	14,406,418	2.03%	286,095	189,292	149,161	40,131	245,964
1995 - 96	14,701,040	2.05%	294,622	188,584	152,570	36,014	258,608
1996 - 97	15,012,615	2.12%	311,575	190,587	153,067	37,520	274,055
1997 - 98	15,310,069	1.98%	297,454	194,242	155,080	39,162	258,292
1998 - 99	15,680,164	2.42%	370,095	195,897	159,988	35,909	334,186
1999 - 00	16,069,889	2.49%	389,725	200,302	162,489	37,813	351,912
2000 - 01	16,385,615	1.96%	315,726	205,798	164,919	40,879	274,847
2001 - 02	16,718,076	2.03%	332,461	205,164	167,812	37,352	295,109
2002 - 03	17,074,258	2.13%	356,182	208,403	168,079	40,324	315,858
2003 - 04	17,475,944	2.35%	401,686	215,298	168,302	46,996	354,690
2004 - 05	17,876,215	2.29%	400,271	221,533	169,302	52,231	348,040
2005 - 06	18,236,885	2.02%	360,670	232,019	170,303	61,716	298,954
2006 - 07	18,501,231	1.45%	264,346	239,635	168,117	71,518	192,828
2007 - 08	18,636,837	0.73%	135,606	236,065	168,966	67,099	68,507
2008 - 09	18,711,844	0.40%	75,007	226,337	170,615	55,722	19,285
2009 - 10	18,826,580	0.61%	114,736	217,408	171,122	46,286	68,450
2010 - 11	18,941,413	0.61%	114,833	213,466	172,661	40,805	74,028

## Florida Population and Components of Change

Fiscal Year	Population (End of Fiscal Year)	Growth Rate	Annual Change in Population	Births	Deaths	Net Natural Increase	Net Migration
2011 - 12	19,120,199	0.94%	178,786	212,948	174,261	38,687	140,099
2012 - 13	19,313,283	1.01%	193,084	213,295	176,881	36,414	156,670
2013 - 14	19,547,232	1.21%	233,949	215,308	178,148	37,160	196,789
2014 - 15	19,814,016	1.36%	266,784	218,676	179,351	39,325	227,459
2015 - 16	20,094,737	1.42%	280,721	222,203	181,629	40,574	240,147
2016 - 17	20,377,312	1.41%	282,575	225,399	184,461	40,938	241,637
2017 - 18	20,656,972	1.37%	279,660	229,284	188,404	40,880	238,780
2018 - 19	20,932,910	1.34%	275,938	234,970	194,903	40,067	235,871
2019 - 20	21,204,721	1.30%	271,811	240,502	202,681	37,821	233,990
2020 - 21	21,472,069	1.26%	267,348	243,338	209,338	34,000	233,348
2021 - 22	21,734,740	1.22%	262,671	244,763	214,525	30,238	232,433
2022 - 23	21,992,537	1.19%	257,797	245,914	219,094	26,820	230,977
2023 - 24	22,245,263	1.15%	252,726	246,583	223,909	22,674	230,052
2024 - 25	22,492,720	1.11%	247,457	247,191	229,296	17,895	229,562
2025 - 26	22,734,837	1.08%	242,117	248,326	234,960	13,366	228,751
2026 - 27	22,971,778	1.04%	236,941	250,171	240,649	9,522	227,419
2027 - 28	23,203,737	1.01%	231,959	251,765	246,196	5,569	226,390
2028 - 29	23,430,907	0.98%	227,170	252,705	251,668	1,037	226,133
2029 - 30	23,653,481	0.95%	222,574	253,366	256,871	-3,505	226,079