

Demographic Estimating Conference Executive Summary July 9, 2014

The Demographic Estimating Conference met on July 9, 2014 to adopt a new population forecast. The data reflect population and household estimates through April 1, 2014; 2013 vital statistics data; and other recent demographic and economic-related data. Overall, each year of the forecast was slightly increased relative to the February projections. The greatest differences were in 2014 and the period from 2020 to 2040.

Population growth in Florida continues to strengthen but—relative to Florida’s past trends—at low levels and rates of growth. Historically, Florida’s population growth has been driven by net migration (more people permanently moving into the state than leaving). However, net migration fell to record low levels during much of 2008 and into 2009, accounting for 25.7% of population growth during FY 2008-09. During that time period, natural increase (births minus deaths) actually exceeded net migration. The low levels of net migration were largely due to national economic conditions, including weakened housing markets and other effects from the Great Recession that made it difficult for people to relocate. Reflecting migration’s return as a decisive factor, the expected net migration share of Florida’s FY 2013-14 population growth is 86.0%.

Florida’s population grew by 185,109 (0.97%) between April 1, 2012 and April 1, 2013, the strongest increase seen since 2007. Annual population change is expected to reach 244,298 net new residents (1.27%) in 2014 --- and between 2015 and 2020, annual population change is expected to remain well above 260,000 net new residents per year.

April 1	Population	Percent Change	Change
2012	19,074,434	0.90%	169,364
2013	19,259,543	0.97%	185,109
2014	19,503,841	1.27%	244,298
2015	19,769,010	1.36%	265,169
2016	20,051,547	1.43%	282,537
2017	20,338,444	1.43%	286,897
2018	20,622,557	1.40%	284,113
2019	20,905,243	1.37%	282,686
2020	21,185,476	1.34%	280,233

Between April 1, 2010 and April 1, 2020, population growth is expected to average 238,414 net new residents per year, representing a compound growth rate of 1.2% over this 10-year time horizon. These increases are analogous to adding a city the size of Hialeah every year. By 2016, Florida’s population is expected to break the 20-million mark.

Of note, there continues to be a difference between the population estimates developed by the U.S. Census Bureau and the official state estimates adopted by the Demographic Estimating Conference. As of July 1, 2013, this difference was approaching 250,000 persons. It is likely that at least part of it may be attributable to noise introduced by discrepancies in federal income tax return filings, a primary data source for the Census Bureau. The Legislative Office of Economic and Demographic Research is currently working with the Census Bureau to investigate this further.

Florida Demographic Estimating Conference

Tables
Conference Packet

July 9, 2014

Florida Resident Population

April 1

Year	Florida Demographic Estimating Conference February 2014			Florida Demographic Estimating Conference July 2014			
	Population	% Change	Change	Population	% Change	Change	
1990	12,938,071	2.27%	287,136	12,938,071	2.27%	287,136	
1991	13,258,732	2.48%	320,661	13,258,732	2.48%	320,661	
1992	13,497,541	1.80%	238,809	13,497,541	1.80%	238,809	
1993	13,730,115	1.72%	232,574	13,730,115	1.72%	232,574	
1994	14,043,757	2.28%	313,642	14,043,757	2.28%	313,642	
1995	14,335,992	2.08%	292,235	14,335,992	2.08%	292,235	
1996	14,623,421	2.00%	287,429	14,623,421	2.00%	287,429	
1997	14,938,314	2.15%	314,893	14,938,314	2.15%	314,893	
1998	15,230,421	1.96%	292,107	15,230,421	1.96%	292,107	
1999	15,580,244	2.30%	349,823	15,580,244	2.30%	349,823	
2000	15,982,824	2.58%	402,580	15,982,824	2.58%	402,580	
2001	16,305,100	2.02%	322,276	16,305,100	2.02%	322,276	
2002	16,634,256	2.02%	329,156	16,634,256	2.02%	329,156	
2003	16,979,706	2.08%	345,450	16,979,706	2.08%	345,450	
2004	17,374,824	2.33%	395,118	17,374,824	2.33%	395,118	
2005	17,778,156	2.32%	403,332	17,778,156	2.32%	403,332	
2006	18,154,475	2.12%	376,319	18,154,475	2.12%	376,319	
2007	18,446,768	1.61%	292,293	18,446,768	1.61%	292,293	
2008	18,613,905	0.91%	167,137	18,613,905	0.91%	167,137	
2009	18,687,425	0.39%	73,520	18,687,425	0.39%	73,520	
2010	18,801,332	0.61%	113,885	18,801,332	0.61%	113,907	
2011	18,905,070	0.55%	103,738	18,905,070	0.55%	103,738	
2012	19,074,434	0.90%	169,364	19,074,434	0.90%	169,364	
2013	19,259,543	0.97%	185,109	19,259,543	0.97%	185,109	
Begins forecast							
2014	19,485,270	1.17%	225,727	19,503,841	1.27%	244,298	
2015	19,747,233	1.34%	261,963	19,769,010	1.36%	265,169	
2016	20,027,214	1.42%	279,981	20,051,547	1.43%	282,537	
2017	20,311,486	1.42%	284,272	20,338,444	1.43%	286,897	
2018	20,593,490	1.39%	282,004	20,622,557	1.40%	284,113	
2019	20,873,474	1.36%	279,984	20,905,243	1.37%	282,686	
			5-Year Averages				5-Year Averages
2020	21,149,697	1.38%	280,493	21,185,476	1.39%	283,293	
2025	22,442,973	1.19%	258,655	22,528,663	1.24%	268,637	
2030	23,608,972	1.02%	233,200	23,785,174	1.09%	251,302	
2035	24,653,968	0.87%	208,999	24,921,699	0.94%	227,305	
2040	25,603,577	0.76%	189,922	25,970,488	0.83%	209,758	

Florida Resident Households

April 1

Year	Florida Demographic Estimating Conference February 2014			Florida Demographic Estimating Conference July 2014			
	Households	% Change	Change	Households	% Change	Change	
1990	5,134,869	3.40%	168,985	5,134,869	3.40%	168,985	
1991	5,283,154	2.89%	148,285	5,283,154	2.89%	148,285	
1992	5,378,499	1.80%	95,345	5,378,499	1.80%	95,345	
1993	5,478,476	1.86%	99,977	5,478,476	1.86%	99,977	
1994	5,589,093	2.02%	110,617	5,589,093	2.02%	110,617	
1995	5,697,328	1.94%	108,235	5,697,328	1.94%	108,235	
1996	5,806,031	1.91%	108,703	5,806,031	1.91%	108,703	
1997	5,929,613	2.13%	123,582	5,929,613	2.13%	123,582	
1998	6,040,514	1.87%	110,901	6,040,514	1.87%	110,901	
1999	6,182,346	2.35%	141,832	6,182,346	2.35%	141,832	
2000	6,338,075	2.52%	155,729	6,338,075	2.52%	155,729	
2001	6,467,215	2.04%	129,140	6,467,215	2.04%	129,140	
2002	6,599,035	2.04%	131,820	6,599,035	2.04%	131,820	
2003	6,737,370	2.10%	138,335	6,737,370	2.10%	138,335	
2004	6,895,469	2.35%	158,099	6,895,469	2.35%	158,099	
2005	7,056,889	2.34%	161,420	7,056,889	2.34%	161,420	
2006	7,207,645	2.14%	150,756	7,207,645	2.14%	150,756	
2007	7,312,907	1.46%	105,262	7,312,907	1.46%	105,262	
2008	7,368,319	0.76%	55,412	7,368,319	0.76%	55,412	
2009	7,386,570	0.25%	18,251	7,386,570	0.25%	18,251	
2010	7,420,812	0.46%	34,242	7,420,812	0.46%	34,242	
2011	7,461,978	0.55%	41,166	7,461,978	0.55%	41,166	
2012	7,537,442	1.01%	75,464	7,537,442	1.01%	75,464	
2013	7,610,153	0.96%	72,711	7,610,153	0.96%	72,711	
Begins forecast							
2014	7,699,731	1.18%	89,578	7,707,069	1.27%	96,916	
2015	7,804,418	1.36%	104,687	7,813,025	1.37%	105,956	
2016	7,917,129	1.44%	112,711	7,926,748	1.46%	113,723	
2017	8,032,600	1.46%	115,471	8,043,261	1.47%	116,513	
2018	8,148,076	1.44%	115,476	8,159,577	1.45%	116,316	
2019	8,263,276	1.41%	115,200	8,275,852	1.43%	116,275	
			5-Year Averages				5-Year Averages
2020	8,377,401	1.43%	114,597	8,391,574	1.44%	115,710	
2025	8,915,961	1.25%	107,712	8,950,003	1.30%	111,686	
2030	9,407,015	1.08%	98,211	9,477,223	1.15%	105,444	
2035	9,852,548	0.93%	89,107	9,959,542	1.00%	96,464	
2040	10,262,410	0.82%	81,972	10,409,475	0.89%	89,987	

Quarterly Data Table

QUARTERLY FORECAST TABLES

	<u>2008-1</u>	<u>2008-2</u>	<u>2008-3</u>	<u>2008-4</u>	<u>2009-1</u>	<u>2009-2</u>	<u>2009-3</u>	<u>2009-4</u>	<u>2010-1</u>	<u>2010-2</u>	<u>2010-3</u>	<u>2010-4</u>	<u>2011-1</u>	<u>2011-2</u>	<u>2011-3</u>	<u>2011-4</u>
Population																
FDEC, 2014 Feb	18,599.6	18,625.4	18,645.5	18,661.9	18,678.6	18,699.6	18,726.1	18,755.5	18,786.1	18,813.9	18,838.3	18,862.6	18,890.1	18,923.4	18,962.9	19,006.4
FDEC, 2014 July	18,599.6	18,625.4	18,645.5	18,661.9	18,678.6	18,699.6	18,726.1	18,755.5	18,786.1	18,814.0	18,838.5	18,862.9	18,890.3	18,923.5	18,962.9	19,006.4
Population Growth Rate																
FDEC, 2014 Feb	0.72	0.56	0.43	0.35	0.36	0.45	0.57	0.63	0.65	0.59	0.52	0.52	0.58	0.71	0.84	0.92
FDEC, 2014 July	0.72	0.56	0.43	0.35	0.36	0.45	0.57	0.63	0.65	0.60	0.52	0.52	0.58	0.71	0.84	0.92
Net Change in Population																
FDEC, 2014 Feb	33.2	25.8	20.1	16.4	16.6	21.1	26.4	29.5	30.5	27.9	24.4	24.4	27.5	33.3	39.4	43.5
FDEC, 2014 July	33.2	25.8	20.1	16.4	16.6	21.1	26.4	29.5	30.5	27.9	24.5	24.4	27.4	33.2	39.4	43.5
Households																
FDEC, 2014 Feb	7,363.9	7,371.6	7,377.0	7,380.8	7,384.5	7,390.0	7,397.7	7,406.6	7,416.0	7,425.2	7,434.0	7,443.7	7,455.4	7,470.2	7,488.0	7,507.6
FDEC, 2014 July	7,363.9	7,371.6	7,377.0	7,380.7	7,384.5	7,390.0	7,397.7	7,406.6	7,416.0	7,425.2	7,434.0	7,443.7	7,455.4	7,470.2	7,488.0	7,507.5
Household Growth Rate																
FDEC, 2014 Feb	0.58	0.42	0.29	0.21	0.20	0.30	0.41	0.48	0.51	0.49	0.48	0.52	0.63	0.80	0.95	1.05
FDEC, 2014 July	0.58	0.42	0.29	0.20	0.20	0.30	0.41	0.48	0.51	0.50	0.48	0.52	0.63	0.80	0.95	1.05
Net Change in Households																
FDEC, 2014 Feb	10.6	7.7	5.4	3.8	3.7	5.5	7.7	8.9	9.5	9.1	8.8	9.7	11.7	14.8	17.8	19.6
FDEC, 2014 July	10.6	7.7	5.4	3.8	3.7	5.5	7.7	8.9	9.5	9.2	8.8	9.7	11.7	14.8	17.8	19.6
Household Size																
FDEC, 2014 Feb	2.526	2.527	2.528	2.528	2.529	2.530	2.531	2.532	2.533	2.534	2.534	2.534	2.534	2.533	2.532	2.532
FDEC, 2014 July	2.526	2.527	2.528	2.528	2.529	2.530	2.531	2.532	2.533	2.534	2.534	2.534	2.534	2.533	2.532	2.532
Household Size Growth Rate																
FDEC, 2014 Feb	0.14	0.14	0.14	0.14	0.16	0.15	0.15	0.15	0.14	0.10	0.04	0.00	-0.05	-0.09	-0.12	-0.13
FDEC, 2014 July	0.14	0.14	0.14	0.15	0.15	0.15	0.15	0.15	0.14	0.10	0.04	0.00	-0.05	-0.09	-0.12	-0.13
Net Migration																
FDEC, 2014 Feb	17.0	10.3	5.2	2.1	2.9	7.9	13.8	17.5	19.4	17.2	14.1	14.3	17.2	23.1	29.4	33.7
FDEC, 2014 July	17.0	10.3	5.2	2.1	2.9	7.9	13.8	17.5	19.4	17.3	14.2	14.4	17.1	23.0	29.4	33.6
Births																
FDEC, 2014 Feb	58.7	58.1	57.6	57.0	56.2	55.6	55.1	54.6	54.1	53.7	53.5	53.3	53.4	53.3	53.3	53.2
FDEC, 2014 July	58.7	58.2	57.6	57.0	56.2	55.6	55.1	54.6	54.1	53.7	53.5	53.3	53.4	53.3	53.3	53.2
Deaths																
FDEC, 2014 Feb	42.5	42.6	42.7	42.7	42.4	42.4	42.5	42.6	43.0	43.1	43.2	43.3	43.1	43.1	43.2	43.4
FDEC, 2014 July	42.5	42.6	42.7	42.7	42.4	42.4	42.5	42.6	43.0	43.1	43.2	43.2	43.1	43.1	43.2	43.4
Net Natural Increase																
FDEC, 2014 Feb	16.2	15.5	14.9	14.3	13.8	13.2	12.6	12.0	11.1	10.6	10.3	10.0	10.3	10.2	10.0	9.9
FDEC, 2014 July	16.2	15.5	14.9	14.3	13.8	13.2	12.6	12.0	11.1	10.6	10.3	10.0	10.3	10.2	10.0	9.9

Quarterly Data Table

QUARTERLY FORECAST TABLES

	2012-1	2012-2	2012-3	2012-4	2013-1	2013-2	2013-3	2013-4	2014-1	2014-2	2014-3	2014-4	2015-1	2015-2	2015-3	2015-4
Population																
FDEC, 2014 Feb	19,051.7	19,096.6	19,140.9	19,186.4	19,234.6	19,285.8	19,339.5	19,396.0	19,455.1	19,516.7	19,580.5	19,646.1	19,713.3	19,781.7	19,851.1	19,921.2
FDEC, 2014 July	19,051.7	19,096.5	19,140.8	19,186.2	19,234.5	19,287.4	19,345.4	19,407.1	19,471.3	19,536.3	19,601.6	19,667.8	19,735.1	19,803.6	19,873.4	19,944.2
Population Growth Rate																
FDEC, 2014 Feb	0.96	0.95	0.93	0.95	1.01	1.07	1.12	1.17	1.22	1.27	1.31	1.35	1.37	1.40	1.41	1.42
FDEC, 2014 July	0.96	0.95	0.93	0.95	1.01	1.11	1.21	1.28	1.33	1.34	1.34	1.36	1.38	1.40	1.42	1.43
Net Change in Population																
FDEC, 2014 Feb	45.3	44.9	44.3	45.5	48.2	51.1	53.8	56.4	59.1	61.6	63.8	65.7	67.2	68.4	69.4	70.1
FDEC, 2014 July	45.3	44.9	44.3	45.4	48.3	53.0	58.0	61.7	64.2	65.0	65.3	66.2	67.3	68.5	69.8	70.8
Households																
FDEC, 2014 Feb	7,527.5	7,546.7	7,564.8	7,582.6	7,600.8	7,620.3	7,641.4	7,663.9	7,687.6	7,712.3	7,737.8	7,764.0	7,790.8	7,818.2	7,846.1	7,874.3
FDEC, 2014 July	7,527.5	7,546.5	7,564.3	7,582.0	7,600.5	7,621.1	7,644.0	7,668.5	7,694.1	7,720.0	7,746.1	7,772.5	7,799.4	7,826.9	7,854.9	7,883.4
Household Growth Rate																
FDEC, 2014 Feb	1.07	1.02	0.96	0.94	0.97	1.03	1.11	1.18	1.24	1.29	1.33	1.36	1.39	1.41	1.43	1.45
FDEC, 2014 July	1.07	1.01	0.95	0.94	0.98	1.09	1.21	1.29	1.34	1.36	1.36	1.37	1.39	1.42	1.44	1.46
Net Change in Households																
FDEC, 2014 Feb	20.0	19.2	18.1	17.7	18.2	19.5	21.1	22.5	23.7	24.7	25.5	26.2	26.8	27.4	27.9	28.2
FDEC, 2014 July	20.0	19.0	17.8	17.6	18.5	20.6	22.9	24.5	25.6	25.9	26.1	26.4	26.9	27.5	28.0	28.5
Household Size																
FDEC, 2014 Feb	2.531	2.530	2.530	2.530	2.531	2.531	2.531	2.531	2.531	2.531	2.530	2.530	2.530	2.530	2.530	2.530
FDEC, 2014 July	2.531	2.531	2.530	2.530	2.531	2.531	2.531	2.531	2.531	2.531	2.531	2.530	2.530	2.530	2.530	2.530
Household Size Growth Rate																
FDEC, 2014 Feb	-0.11	-0.08	-0.03	0.01	0.04	0.04	0.01	-0.01	-0.02	-0.02	-0.01	-0.01	-0.02	-0.02	-0.02	-0.03
FDEC, 2014 July	-0.11	-0.07	-0.02	0.01	0.03	0.02	0.00	-0.01	-0.01	-0.01	-0.01	-0.01	-0.02	-0.02	-0.02	-0.03
Net Migration																
FDEC, 2014 Feb	35.8	35.6	35.1	36.3	38.9	41.8	44.3	46.9	49.4	51.8	54.0	55.8	57.2	58.4	59.3	60.0
FDEC, 2014 July	35.7	35.5	35.1	36.3	39.5	44.2	49.2	52.8	55.2	56.0	56.3	57.1	58.3	59.6	60.9	61.9
Births																
FDEC, 2014 Feb	53.2	53.2	53.2	53.3	53.6	53.7	53.9	54.0	54.2	54.4	54.5	54.7	54.9	55.0	55.2	55.4
FDEC, 2014 July	53.2	53.2	53.3	53.3	53.6	53.7	53.9	54.0	54.2	54.4	54.6	54.8	55.0	55.2	55.4	55.6
Deaths																
FDEC, 2014 Feb	43.7	43.9	44.0	44.2	44.2	44.3	44.4	44.5	44.5	44.6	44.7	44.8	44.9	45.0	45.1	45.3
FDEC, 2014 July	43.6	43.8	44.1	44.3	44.8	45.0	45.1	45.2	45.3	45.4	45.6	45.7	46.0	46.3	46.5	46.7
Net Natural Increase																
FDEC, 2014 Feb	9.4	9.3	9.2	9.2	9.3	9.4	9.4	9.5	9.7	9.8	9.8	9.9	10.0	10.0	10.1	10.1
FDEC, 2014 July	9.5	9.4	9.2	9.0	8.8	8.7	8.8	8.9	8.9	9.0	9.0	9.1	9.0	8.9	8.9	8.8

Quarterly Data Table

QUARTERLY FORECAST TABLES

	<u>2016-1</u>	<u>2016-2</u>	<u>2016-3</u>	<u>2016-4</u>	<u>2017-1</u>	<u>2017-2</u>	<u>2017-3</u>	<u>2017-4</u>	<u>2018-1</u>	<u>2018-2</u>	<u>2018-3</u>	<u>2018-4</u>	<u>2019-1</u>	<u>2019-2</u>	<u>2019-3</u>	<u>2019-4</u>
Population																
FDEC, 2014 Feb	19,991.8	20,062.7	20,133.8	20,204.9	20,276.0	20,346.9	20,417.6	20,488.1	20,558.4	20,628.6	20,698.8	20,768.8	20,838.6	20,908.2	20,977.6	21,046.7
FDEC, 2014 July	20,015.7	20,087.4	20,159.1	20,230.9	20,302.6	20,374.1	20,445.3	20,516.3	20,587.2	20,658.0	20,728.7	20,799.4	20,870.0	20,940.4	21,010.7	21,080.8
Population Growth Rate																
FDEC, 2014 Feb	1.43	1.43	1.42	1.42	1.41	1.41	1.40	1.39	1.38	1.37	1.37	1.36	1.35	1.34	1.33	1.32
FDEC, 2014 July	1.44	1.44	1.44	1.43	1.43	1.42	1.41	1.40	1.39	1.38	1.38	1.37	1.36	1.36	1.35	1.34
Net Change in Population																
FDEC, 2014 Feb	70.6	70.9	71.1	71.1	71.1	70.9	70.7	70.5	70.3	70.2	70.2	70.0	69.8	69.6	69.4	69.1
FDEC, 2014 July	71.5	71.7	71.7	71.8	71.7	71.5	71.2	71.0	70.9	70.8	70.8	70.7	70.6	70.4	70.3	70.1
Households																
FDEC, 2014 Feb	7,902.8	7,931.5	7,960.3	7,989.2	8,018.1	8,047.1	8,075.9	8,104.8	8,133.7	8,162.5	8,191.3	8,220.1	8,248.9	8,277.6	8,306.3	8,334.8
FDEC, 2014 July	7,912.3	7,941.3	7,970.3	7,999.5	8,028.7	8,057.8	8,086.9	8,116.0	8,145.0	8,174.1	8,203.2	8,232.3	8,261.3	8,290.4	8,319.3	8,348.3
Household Growth Rate																
FDEC, 2014 Feb	1.46	1.46	1.46	1.46	1.46	1.45	1.44	1.44	1.43	1.43	1.42	1.41	1.41	1.40	1.39	1.38
FDEC, 2014 July	1.47	1.47	1.47	1.47	1.47	1.46	1.45	1.45	1.44	1.44	1.43	1.43	1.42	1.41	1.41	1.40
Net Change in Households																
FDEC, 2014 Feb	28.5	28.7	28.8	28.9	28.9	28.9	28.9	28.9	28.9	28.8	28.8	28.8	28.8	28.7	28.6	28.5
FDEC, 2014 July	28.8	29.0	29.1	29.2	29.2	29.2	29.1	29.1	29.1	29.0	29.0	29.0	28.9	28.8	28.8	28.6
Household Size																
FDEC, 2014 Feb	2.530	2.529	2.529	2.529	2.529	2.528	2.528	2.528	2.528	2.527	2.527	2.527	2.526	2.526	2.526	2.525
FDEC, 2014 July	2.530	2.529	2.529	2.529	2.529	2.528	2.528	2.528	2.528	2.527	2.527	2.527	2.526	2.526	2.526	2.525
Household Size Growth Rate																
FDEC, 2014 Feb	-0.03	-0.03	-0.04	-0.04	-0.04	-0.04	-0.05	-0.05	-0.05	-0.05	-0.05	-0.05	-0.05	-0.06	-0.06	-0.06
FDEC, 2014 July	-0.03	-0.03	-0.04	-0.04	-0.04	-0.04	-0.05	-0.05	-0.05	-0.05	-0.05	-0.05	-0.05	-0.06	-0.06	-0.06
Net Migration																
FDEC, 2014 Feb	60.5	60.8	60.9	60.9	60.8	60.6	60.5	60.2	60.1	60.0	60.0	60.0	59.8	59.7	59.6	59.5
FDEC, 2014 July	62.7	63.0	63.1	63.2	63.1	63.0	62.8	62.6	62.6	62.6	62.6	62.6	62.6	62.5	62.4	62.3
Births																
FDEC, 2014 Feb	55.7	55.9	56.1	56.3	56.4	56.6	56.9	57.2	57.5	57.8	58.1	58.5	59.0	59.4	59.7	60.0
FDEC, 2014 July	55.8	56.0	56.1	56.3	56.5	56.7	56.9	57.1	57.2	57.4	57.6	57.8	57.9	58.1	58.3	58.5
Deaths																
FDEC, 2014 Feb	45.5	45.7	45.9	46.0	46.2	46.4	46.6	46.9	47.2	47.6	48.0	48.4	49.0	49.5	49.9	50.4
FDEC, 2014 July	47.0	47.2	47.5	47.7	47.9	48.2	48.4	48.7	48.9	49.2	49.4	49.7	49.9	50.2	50.5	50.7
Net Natural Increase																
FDEC, 2014 Feb	10.1	10.2	10.2	10.2	10.3	10.3	10.2	10.2	10.2	10.2	10.1	10.0	10.0	9.9	9.8	9.6
FDEC, 2014 July	8.8	8.8	8.7	8.6	8.6	8.5	8.4	8.4	8.3	8.2	8.2	8.1	8.0	7.9	7.8	7.7

Quarterly Data Table

QUARTERLY FORECAST TABLES

	<u>2020-1</u>	<u>2020-2</u>	<u>2020-3</u>	<u>2020-4</u>	<u>2021-1</u>	<u>2021-2</u>	<u>2021-3</u>	<u>2021-4</u>	<u>2022-1</u>	<u>2022-2</u>	<u>2022-3</u>	<u>2022-4</u>	<u>2023-1</u>	<u>2023-2</u>
Population														
FDEC, 2014 Feb	21,115.4	21,183.8	21,251.7	21,319.3	21,386.5	21,453.3	21,519.7	21,585.7	21,651.4	21,716.7	21,781.6	21,846.2	21,910.4	21,974.3
FDEC, 2014 July	21,150.6	21,220.2	21,289.5	21,358.5	21,427.3	21,495.8	21,564.1	21,632.1	21,699.8	21,767.4	21,834.7	21,901.7	21,968.6	22,035.2
Population Growth Rate														
FDEC, 2014 Feb	1.31	1.30	1.29	1.28	1.27	1.26	1.24	1.23	1.22	1.21	1.20	1.19	1.18	1.17
FDEC, 2014 July	1.33	1.32	1.31	1.30	1.29	1.29	1.28	1.27	1.26	1.25	1.24	1.23	1.23	1.22
Net Change in Population														
FDEC, 2014 Feb	68.7	68.4	68.0	67.6	67.2	66.8	66.4	66.0	65.7	65.3	64.9	64.6	64.2	63.9
FDEC, 2014 July	69.9	69.6	69.3	69.0	68.8	68.5	68.3	68.0	67.8	67.5	67.3	67.1	66.8	66.6
Households														
FDEC, 2014 Feb	8,363.2	8,391.5	8,419.7	8,447.7	8,475.5	8,503.3	8,530.8	8,558.3	8,585.6	8,612.7	8,639.8	8,666.7	8,693.4	8,720.1
FDEC, 2014 July	8,377.2	8,405.9	8,434.6	8,463.2	8,491.7	8,520.1	8,548.4	8,576.6	8,604.8	8,632.8	8,660.8	8,688.7	8,716.5	8,744.2
Household Growth Rate														
FDEC, 2014 Feb	1.37	1.36	1.35	1.34	1.33	1.31	1.30	1.29	1.28	1.27	1.26	1.25	1.24	1.23
FDEC, 2014 July	1.39	1.38	1.37	1.36	1.35	1.34	1.34	1.33	1.32	1.31	1.30	1.29	1.29	1.28
Net Change in Households														
FDEC, 2014 Feb	28.4	28.3	28.1	28.0	27.9	27.7	27.6	27.4	27.3	27.2	27.0	26.9	26.8	26.6
FDEC, 2014 July	28.5	28.4	28.2	28.1	27.9	27.8	27.6	27.5	27.4	27.2	27.1	27.0	26.8	26.7
Household Size														
FDEC, 2014 Feb	2.525	2.524	2.524	2.524	2.523	2.523	2.523	2.522	2.522	2.521	2.521	2.521	2.520	2.520
FDEC, 2014 July	2.525	2.524	2.524	2.524	2.523	2.523	2.523	2.522	2.522	2.521	2.521	2.521	2.520	2.520
Household Size Growth Rate														
FDEC, 2014 Feb	-0.06	-0.06	-0.06	-0.06	-0.06	-0.06	-0.06	-0.06	-0.06	-0.06	-0.06	-0.06	-0.06	-0.06
FDEC, 2014 July	-0.06	-0.06	-0.06	-0.06	-0.06	-0.06	-0.06	-0.06	-0.06	-0.06	-0.06	-0.06	-0.06	-0.06
Net Migration														
FDEC, 2014 Feb	59.4	59.2	59.0	58.9	58.8	58.7	58.6	58.4	58.2	58.0	57.9	57.8	57.6	57.5
FDEC, 2014 July	62.2	62.0	61.8	61.8	61.7	61.6	61.6	61.5	61.5	61.4	61.4	61.4	61.4	61.4
Births														
FDEC, 2014 Feb	60.3	60.5	60.7	60.8	60.8	60.9	61.0	61.1	61.3	61.3	61.4	61.5	61.5	61.5
FDEC, 2014 July	58.6	58.8	59.0	59.2	59.3	59.5	59.7	59.9	60.0	60.2	60.4	60.6	60.7	60.9
Deaths														
FDEC, 2014 Feb	50.9	51.4	51.8	52.2	52.5	52.9	53.2	53.5	53.8	54.1	54.4	54.6	54.9	55.2
FDEC, 2014 July	51.0	51.3	51.5	51.9	52.3	52.6	53.0	53.4	53.8	54.1	54.5	54.9	55.3	55.7
Net Natural Increase														
FDEC, 2014 Feb	9.4	9.1	8.9	8.7	8.3	8.1	7.9	7.6	7.5	7.3	7.0	6.8	6.6	6.4
FDEC, 2014 July	7.7	7.6	7.5	7.3	7.1	6.9	6.7	6.5	6.3	6.1	5.9	5.7	5.5	5.2

FISCAL YEAR
FORECAST TABLES

Fiscal Year Data Table

	<u>1990-91</u>	<u>1991-92</u>	<u>1992-93</u>	<u>1993-94</u>	<u>1994-95</u>	<u>1995-96</u>	<u>1996-97</u>	<u>1997-98</u>	<u>1998-99</u>	<u>1999-00</u>	<u>2000-01</u>	<u>2001-02</u>	<u>2002-03</u>	<u>2003-04</u>	<u>2004-05</u>
Population															
FDEC, 2014 Feb	13,178.0	13,442.6	13,670.0	13,962.2	14,264.9	14,550.7	14,859.1	15,158.3	15,488.4	15,881.7	16,228.0	16,551.2	16,892.0	17,273.8	17,677.3
FDEC, 2014 July	13,178.0	13,442.6	13,670.0	13,962.2	14,264.9	14,550.7	14,859.1	15,158.3	15,488.4	15,881.7	16,228.0	16,551.2	16,892.0	17,273.8	17,677.3
Growth Rate															
FDEC, 2014 Feb	2.42	2.01	1.69	2.14	2.17	2.00	2.12	2.01	2.18	2.54	2.18	1.99	2.06	2.26	2.34
FDEC, 2014 July	2.42	2.01	1.69	2.14	2.17	2.00	2.12	2.01	2.18	2.54	2.18	1.99	2.06	2.26	2.34
Net Change in Population															
FDEC, 2014 Feb	311.4	264.6	227.4	292.2	302.8	285.8	308.4	299.2	330.1	393.2	346.4	323.2	340.9	381.8	403.5
FDEC, 2014 July	311.4	264.6	227.4	292.2	302.8	285.8	308.4	299.2	330.1	393.2	346.4	323.2	340.9	381.8	403.5
Households															
FDEC, 2014 Feb	5,230.7	5,335.4	5,424.2	5,538.0	5,655.6	5,766.7	5,887.3	6,005.5	6,137.4	6,296.9	6,436.4	6,565.8	6,702.3	6,855.1	7,016.4
FDEC, 2014 July	5,230.7	5,335.4	5,424.2	5,538.0	5,655.6	5,766.7	5,887.3	6,005.5	6,137.4	6,296.9	6,436.4	6,565.8	6,702.3	6,855.1	7,016.4
Growth Rate															
FDEC, 2014 Feb	2.44	2.00	1.66	2.10	2.12	1.96	2.09	2.01	2.20	2.60	2.22	2.01	2.08	2.28	2.35
FDEC, 2014 July	2.44	2.00	1.66	2.10	2.12	1.96	2.09	2.01	2.20	2.60	2.22	2.01	2.08	2.28	2.35
Net Change in Households															
FDEC, 2014 Feb	124.7	104.7	88.8	113.8	117.7	111.1	120.6	118.1	131.9	159.5	139.5	129.3	136.5	152.8	161.3
FDEC, 2014 July	124.7	104.7	88.8	113.8	117.7	111.1	120.6	118.1	132.0	159.5	139.5	129.3	136.5	152.8	161.3
Household Size															
FDEC, 2014 Feb	2.519	2.520	2.520	2.521	2.522	2.523	2.524	2.524	2.524	2.522	2.521	2.521	2.520	2.520	2.519
FDEC, 2014 July	2.519	2.520	2.520	2.521	2.522	2.523	2.524	2.524	2.524	2.522	2.521	2.521	2.520	2.520	2.519
Growth Rate															
FDEC, 2014 Feb	-0.02	0.01	0.03	0.04	0.04	0.04	0.03	0.01	-0.02	-0.06	-0.03	-0.02	-0.02	-0.02	-0.02
FDEC, 2014 July	-0.02	0.01	0.03	0.04	0.04	0.04	0.03	0.01	-0.02	-0.06	-0.03	-0.02	-0.02	-0.02	-0.02
Net Migration															
FDEC, 2014 Feb	248.4	208.9	177.4	246.6	262.7	249.6	270.9	260.4	293.9	355.3	306.0	285.5	300.4	335.0	351.1
FDEC, 2014 July	248.4	208.9	177.4	246.6	262.7	249.5	270.9	260.5	293.9	355.3	306.0	285.5	300.4	335.0	351.1
Births															
FDEC, 2014 Feb	197.0	192.2	192.0	191.7	189.4	188.6	190.7	194.0	196.0	200.5	205.4	205.4	208.5	215.0	221.8
FDEC, 2014 July	197.0	192.2	192.0	191.7	189.4	188.6	190.7	194.0	196.0	200.5	205.4	205.4	208.5	215.0	221.8
Deaths															
FDEC, 2014 Feb	134.0	136.5	142.0	146.1	149.3	152.4	153.1	155.3	159.8	162.5	165.0	167.7	168.1	168.3	169.4
FDEC, 2014 July	134.0	136.5	142.0	146.1	149.3	152.4	153.1	155.3	159.8	162.5	165.0	167.7	168.1	168.3	169.4
Net Natural Increase															
FDEC, 2014 Feb	63.0	55.7	50.0	45.6	40.1	36.2	37.5	38.8	36.2	38.0	40.3	37.7	40.4	46.7	52.4
FDEC, 2014 July	63.0	55.7	50.0	45.6	40.1	36.2	37.5	38.8	36.2	38.0	40.3	37.7	40.4	46.7	52.4

FISCAL YEAR
FORECAST TABLES

Fiscal Year Data Table

	<u>2005-06</u>	<u>2006-07</u>	<u>2007-08</u>	<u>2008-09</u>	<u>2009-10</u>	<u>2010-11</u>	<u>2011-12</u>	<u>2012-13</u>	<u>2013-14</u>	<u>2014-15</u>	<u>2015-16</u>	<u>2016-17</u>	<u>2017-18</u>	<u>2018-19</u>
Population														
FDEC, 2014 Feb	18,062.2	18,378.2	18,578.9	18,671.4	18,770.4	18,878.6	19,029.4	19,211.9	19,426.8	19,680.4	19,956.7	20,240.4	20,523.2	20,803.6
FDEC, 2014 July	18,062.2	18,378.2	18,578.9	18,671.4	18,770.4	18,878.8	19,029.4	19,212.2	19,440.0	19,702.0	19,980.2	20,266.7	20,551.7	20,834.6
Growth Rate														
FDEC, 2014 Feb	2.18	1.75	1.09	0.50	0.53	0.58	0.80	0.96	1.12	1.31	1.40	1.42	1.40	1.37
FDEC, 2014 July	2.18	1.75	1.09	0.50	0.53	0.58	0.80	0.96	1.19	1.35	1.41	1.43	1.41	1.38
Net Change in Population														
FDEC, 2014 Feb	384.9	316.0	200.7	92.5	99.0	108.2	150.8	182.5	214.9	253.6	276.3	283.7	282.8	280.4
FDEC, 2014 July	384.9	316.0	200.7	92.5	99.0	108.4	150.6	182.8	227.8	262.0	278.1	286.5	285.0	283.0
Households														
FDEC, 2014 Feb	7,170.9	7,288.9	7,357.1	7,383.1	7,411.3	7,450.8	7,517.5	7,592.1	7,676.3	7,777.7	7,888.7	8,003.7	8,119.2	8,234.5
FDEC, 2014 July	7,170.9	7,288.9	7,357.1	7,383.0	7,411.4	7,450.8	7,517.4	7,592.0	7,681.6	7,786.2	7,898.0	8,014.1	8,130.5	8,246.8
Growth Rate														
FDEC, 2014 Feb	2.20	1.65	0.93	0.35	0.38	0.53	0.89	0.99	1.11	1.32	1.43	1.46	1.44	1.42
FDEC, 2014 July	2.20	1.65	0.93	0.35	0.38	0.53	0.89	0.99	1.18	1.36	1.44	1.47	1.45	1.43
Net Change in Households														
FDEC, 2014 Feb	154.5	118.1	68.1	26.0	28.3	39.5	66.6	74.7	84.2	101.4	111.0	115.0	115.5	115.3
FDEC, 2014 July	154.5	118.1	68.1	26.0	28.3	39.5	66.5	74.6	89.7	104.6	111.7	116.1	116.4	116.3
Household Size														
FDEC, 2014 Feb	2.519	2.521	2.525	2.529	2.533	2.534	2.531	2.531	2.531	2.530	2.530	2.529	2.528	2.526
FDEC, 2014 July	2.519	2.521	2.525	2.529	2.533	2.534	2.531	2.531	2.531	2.530	2.530	2.529	2.528	2.526
Growth Rate														
FDEC, 2014 Feb	-0.02	0.10	0.16	0.14	0.15	0.04	-0.09	-0.03	0.01	-0.02	-0.02	-0.04	-0.05	-0.05
FDEC, 2014 July	-0.02	0.10	0.16	0.14	0.15	0.04	-0.09	-0.03	0.00	-0.01	-0.02	-0.04	-0.05	-0.05
Net Migration														
FDEC, 2014 Feb	322.9	245.0	133.7	36.3	52.7	67.4	112.1	145.5	176.5	213.8	235.8	242.8	241.9	240.4
FDEC, 2014 July	322.9	245.0	133.7	36.3	52.7	67.6	111.8	147.1	192.3	226.0	242.9	252.2	251.7	250.8
Births														
FDEC, 2014 Feb	232.1	239.3	236.0	226.4	217.4	213.5	212.9	213.9	216.4	219.1	222.1	225.4	229.3	235.0
FDEC, 2014 July	232.1	239.3	236.0	226.4	217.4	213.5	212.9	213.9	216.5	219.5	222.7	225.7	228.6	231.4
Deaths														
FDEC, 2014 Feb	170.1	168.3	169.0	170.2	171.1	172.7	174.3	176.8	178.1	179.4	181.6	184.5	188.4	194.9
FDEC, 2014 July	170.1	168.3	169.0	170.2	171.1	172.7	174.1	178.1	181.0	183.5	187.5	191.3	195.3	199.3
Net Natural Increase														
FDEC, 2014 Feb	62.0	71.0	67.0	56.2	46.3	40.8	38.6	37.1	38.4	39.8	40.5	40.9	40.9	40.1
FDEC, 2014 July	62.0	71.0	67.0	56.2	46.3	40.8	38.8	35.8	35.5	36.0	35.3	34.4	33.3	32.1

FISCAL YEAR
FORECAST TABLES

Fiscal Year Data Table

	<u>2019-20</u>	<u>2020-21</u>	<u>2021-22</u>	<u>2022-23</u>
Population				
FDEC, 2014 Feb	21,080.9	21,352.7	21,618.4	21,878.1
FDEC, 2014 July	21,115.6	21,392.8	21,665.8	21,935.0
Growth Rate				
FDEC, 2014 Feb	1.33	1.29	1.24	1.20
FDEC, 2014 July	1.35	1.31	1.28	1.24
Net Change in Population				
FDEC, 2014 Feb	277.3	271.8	265.7	259.8
FDEC, 2014 July	280.9	277.2	273.0	269.2
Households				
FDEC, 2014 Feb	8,348.9	8,461.5	8,571.9	8,680.0
FDEC, 2014 July	8,362.7	8,477.4	8,590.7	8,702.6
Growth Rate				
FDEC, 2014 Feb	1.39	1.35	1.30	1.26
FDEC, 2014 July	1.41	1.37	1.34	1.30
Net Change in Households				
FDEC, 2014 Feb	114.4	112.6	110.3	108.1
FDEC, 2014 July	115.9	114.7	113.3	111.9
Household Size				
FDEC, 2014 Feb	2.525	2.524	2.522	2.521
FDEC, 2014 July	2.525	2.524	2.522	2.521
Growth Rate				
FDEC, 2014 Feb	-0.06	-0.06	-0.06	-0.06
FDEC, 2014 July	-0.06	-0.06	-0.06	-0.06
Net Migration				
FDEC, 2014 Feb	239.4	237.8	235.4	233.0
FDEC, 2014 July	250.2	248.5	247.5	247.0
Births				
FDEC, 2014 Feb	240.5	243.3	244.8	245.9
FDEC, 2014 July	234.2	237.0	239.8	242.6
Deaths				
FDEC, 2014 Feb	202.7	209.3	214.5	219.1
FDEC, 2014 July	203.5	208.3	214.3	220.3
Net Natural Increase				
FDEC, 2014 Feb	37.8	34.0	30.2	26.8
FDEC, 2014 July	30.8	28.7	25.6	22.2

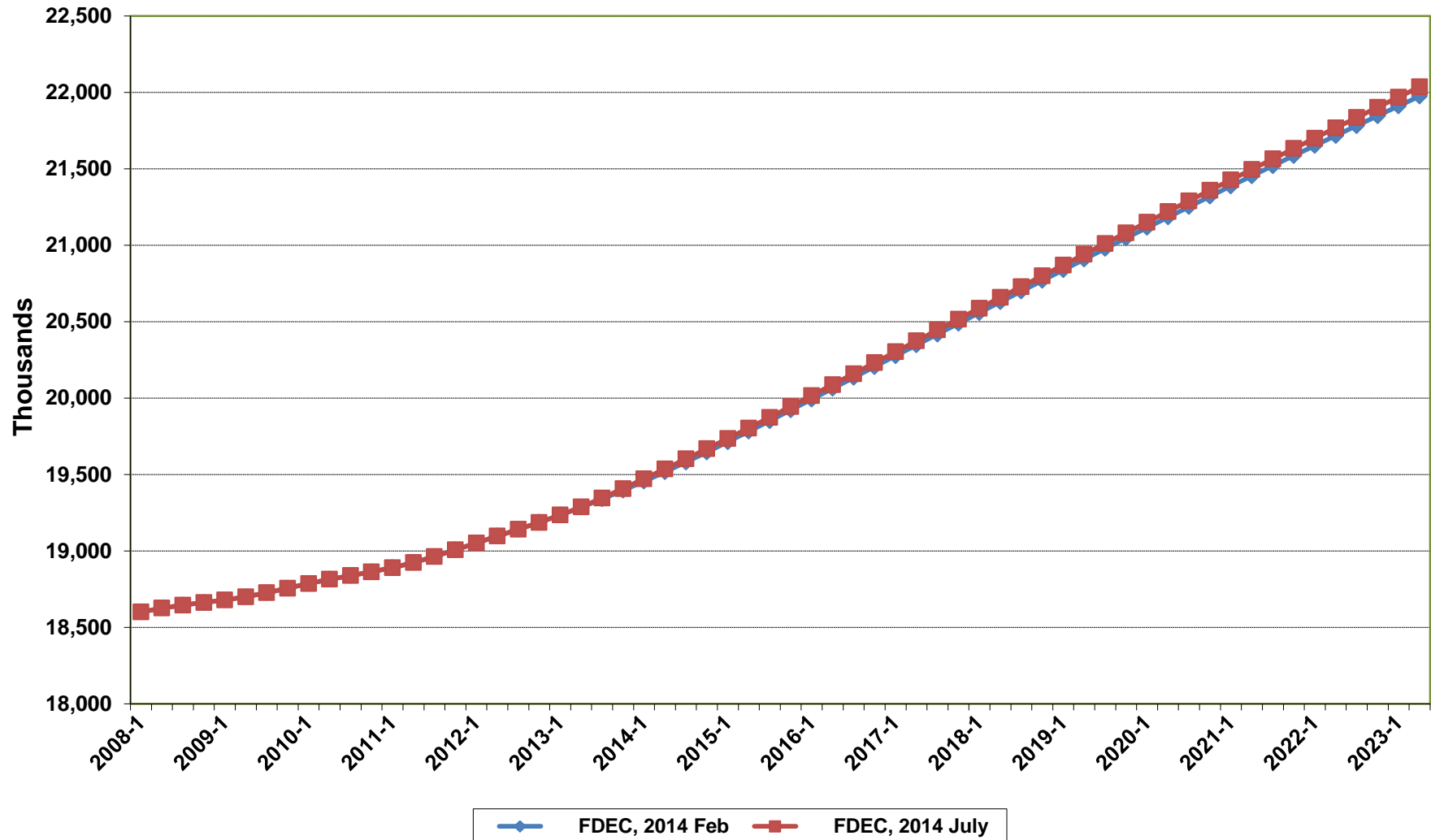
Florida Demographic Estimating Conference

Charts

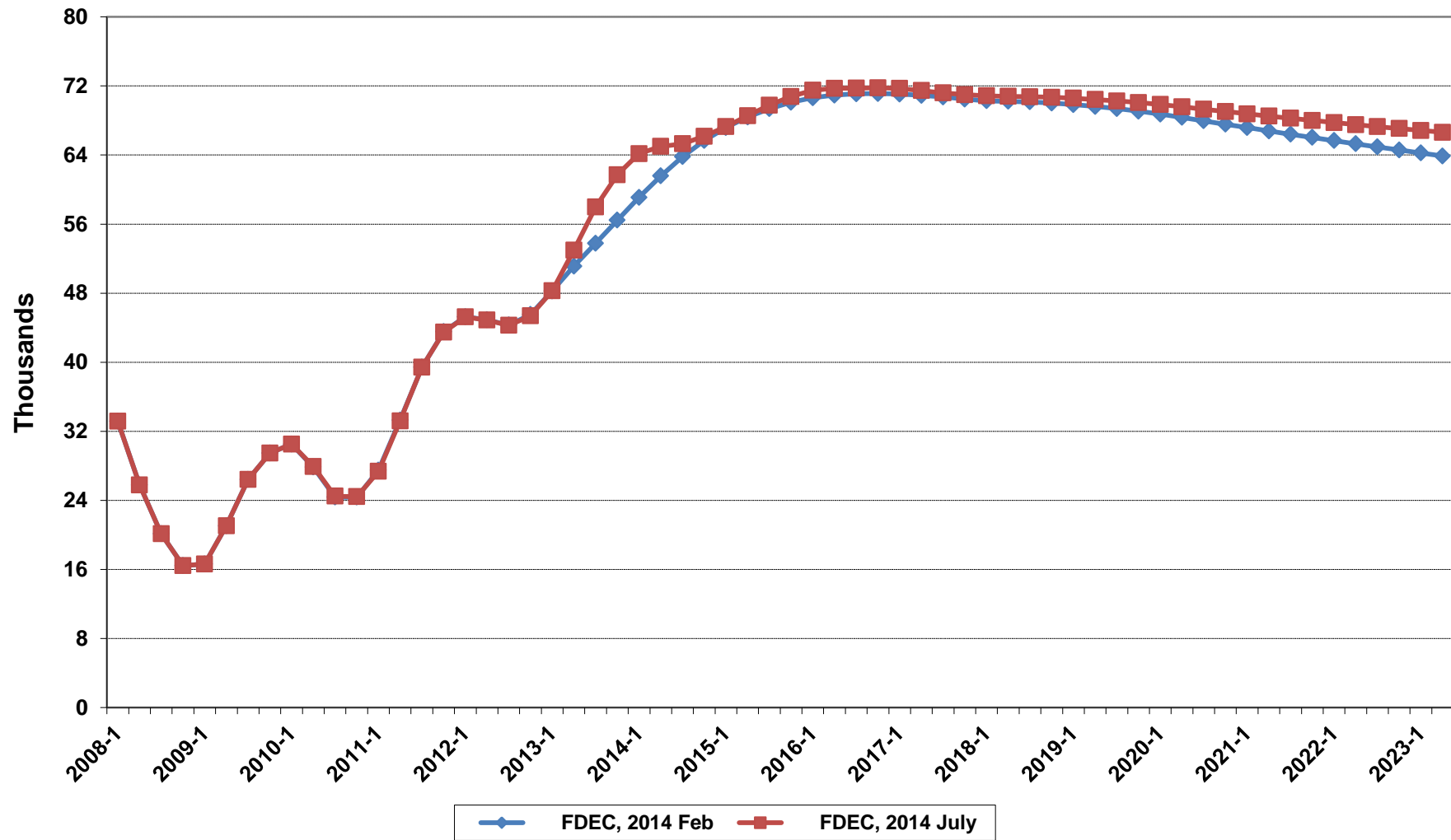
Conference Packet

July 9, 2014

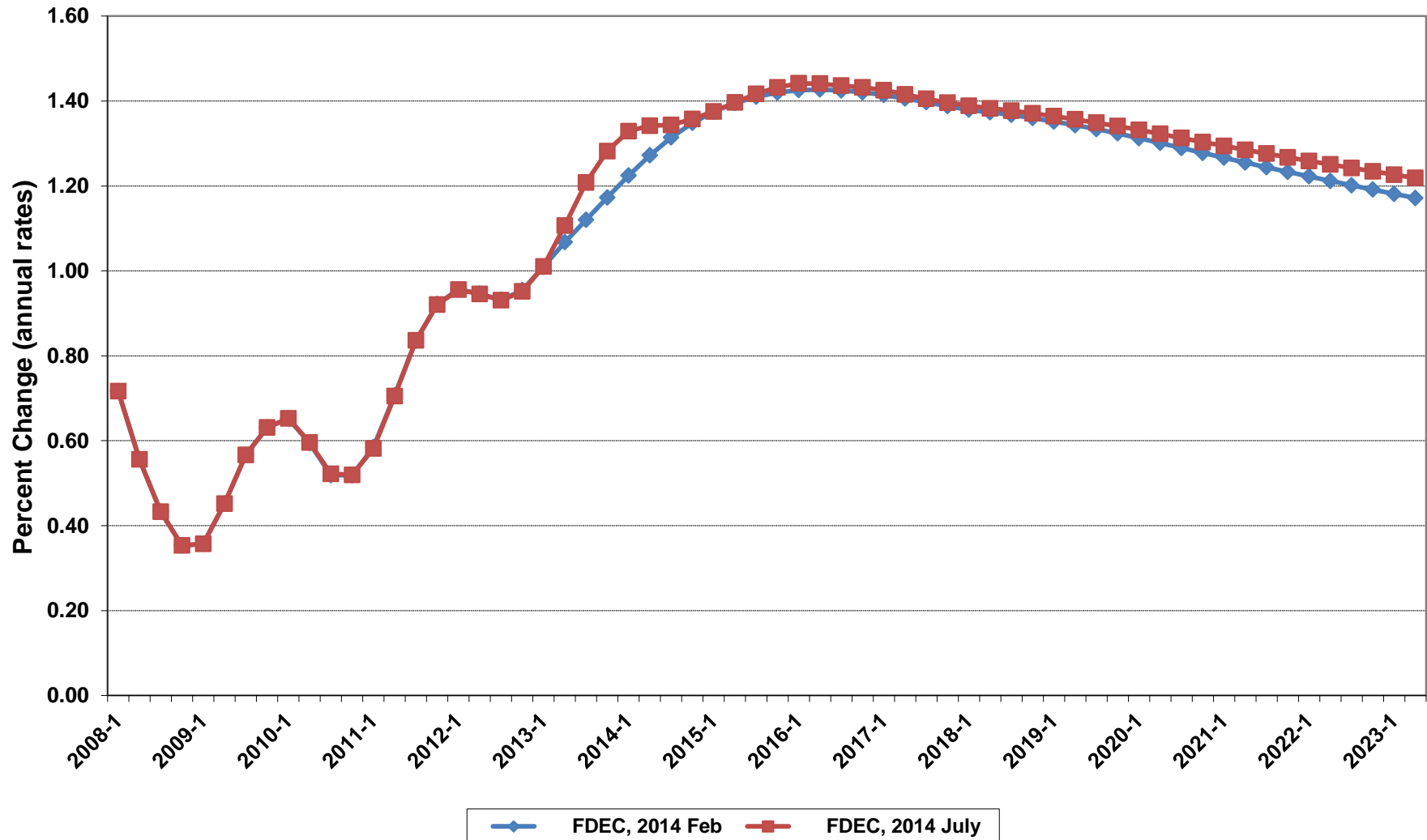
Florida Resident Population



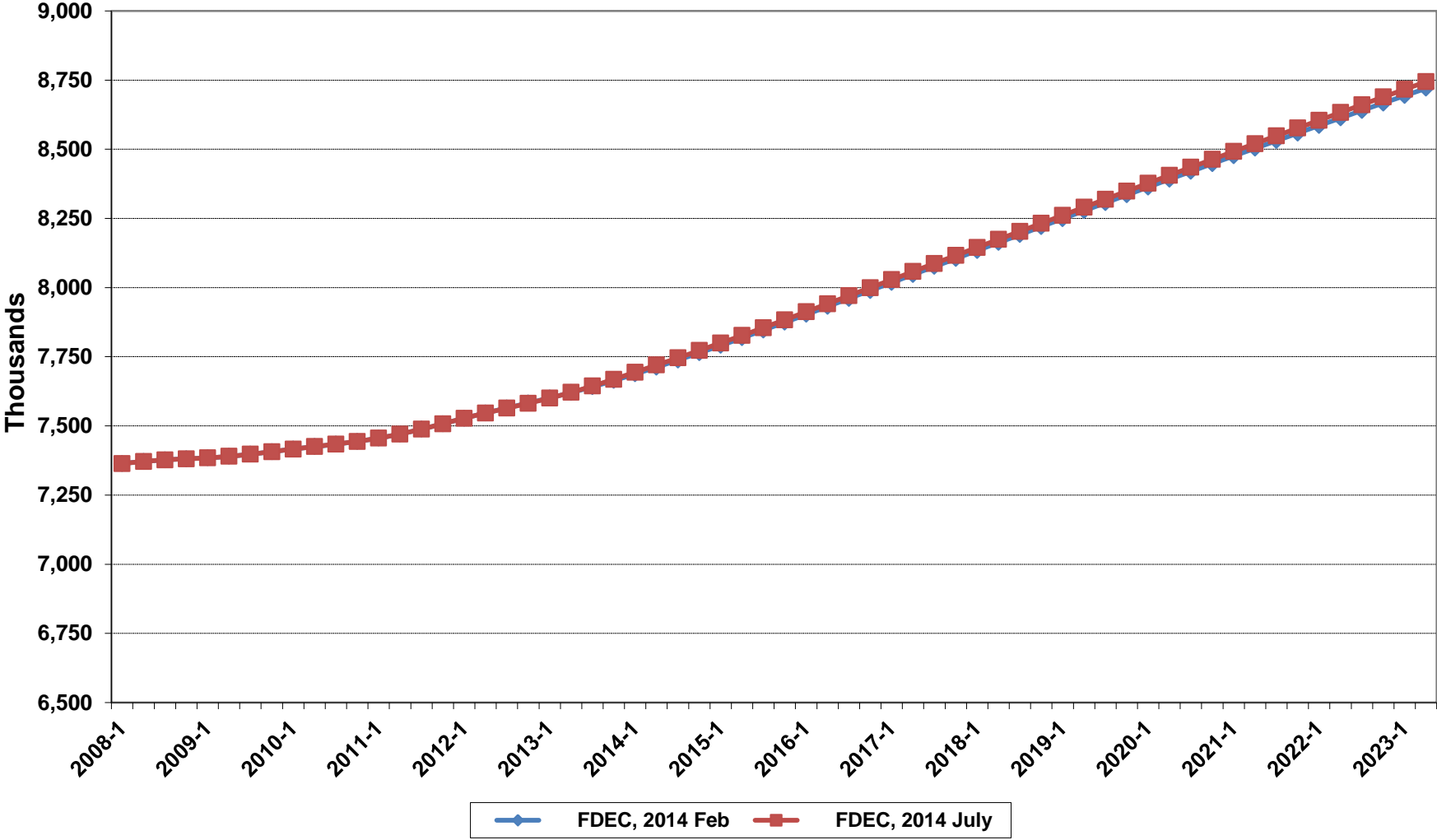
Net Change In Florida Resident Population



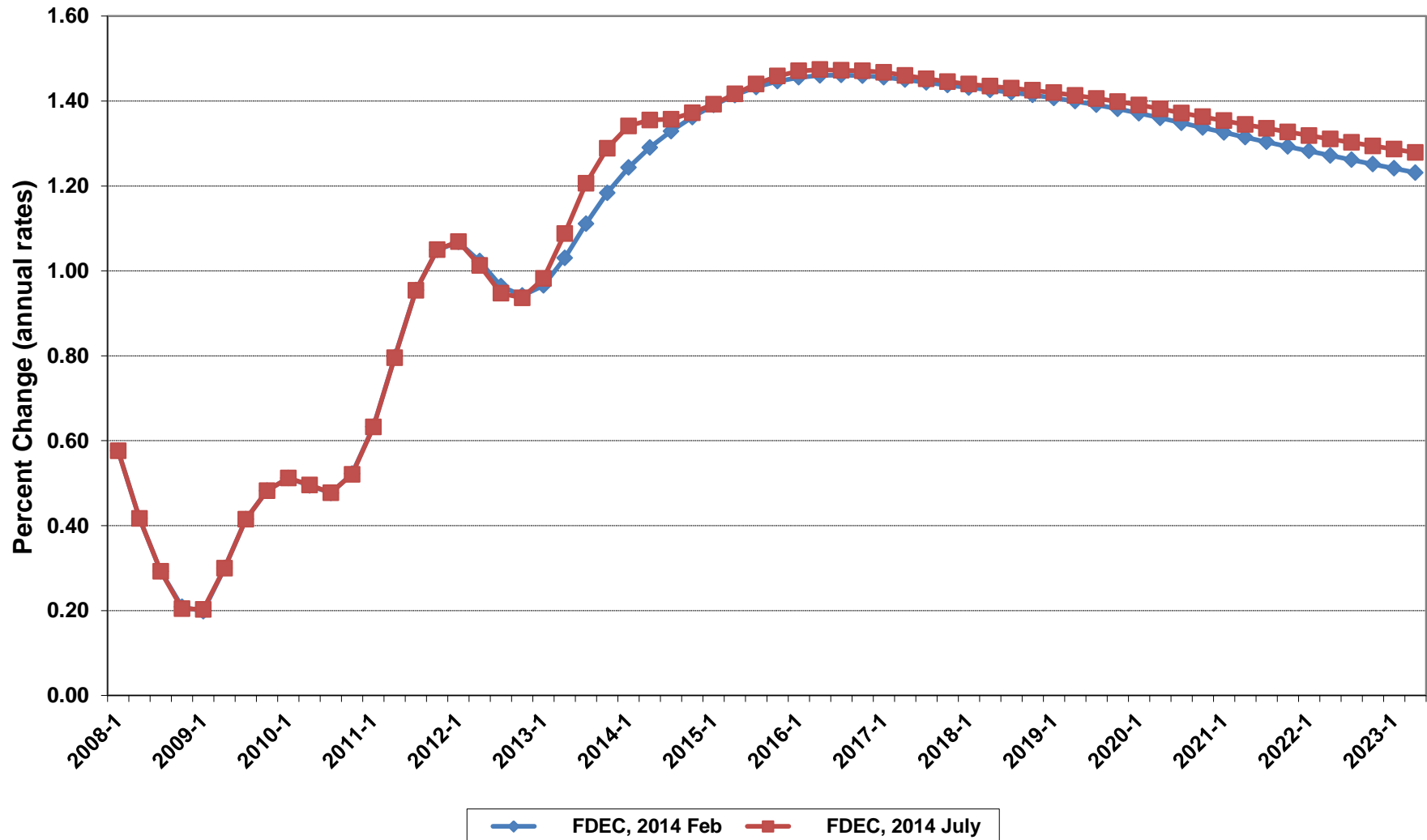
Growth In Florida Resident Population



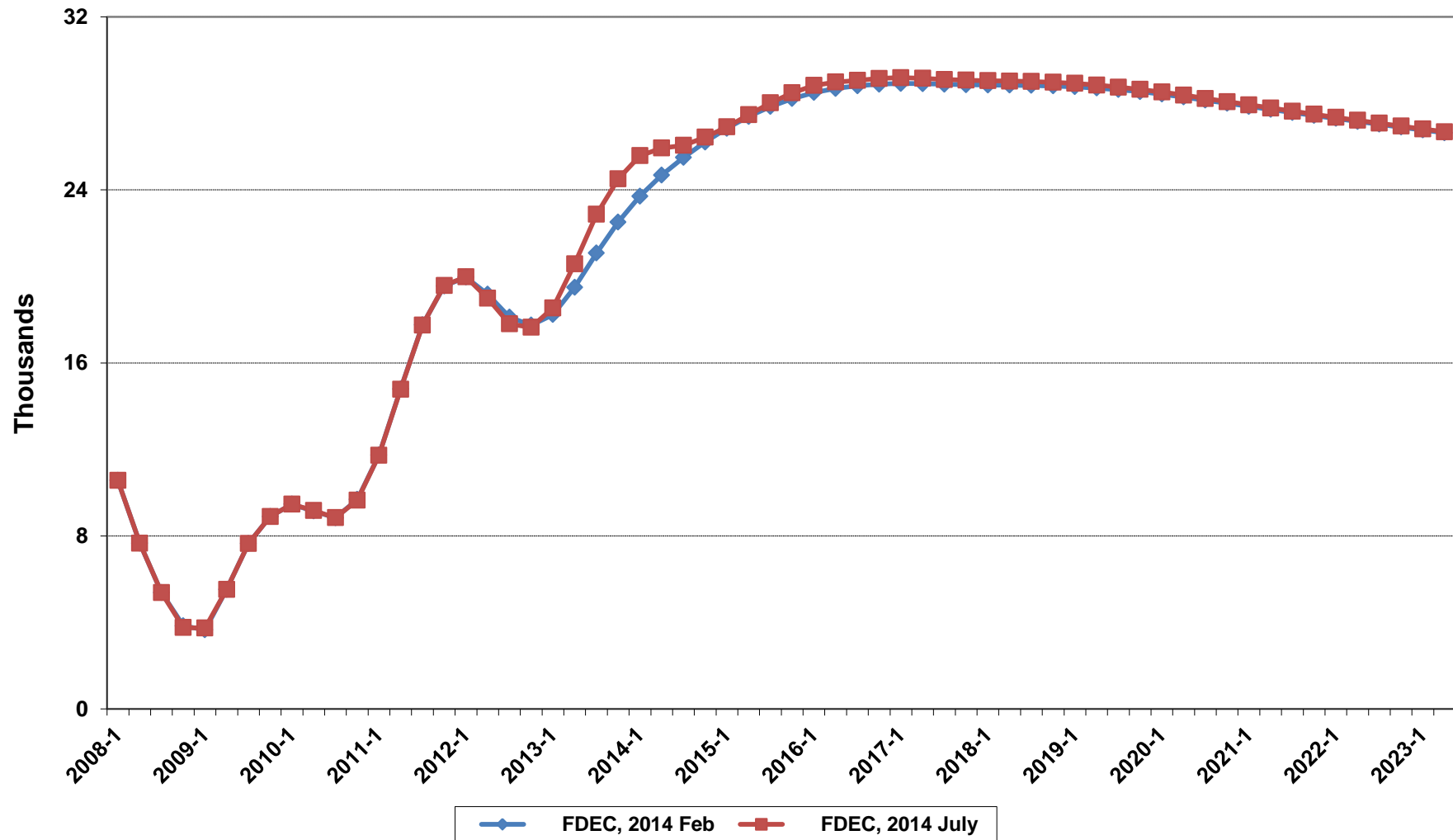
Florida Resident Households



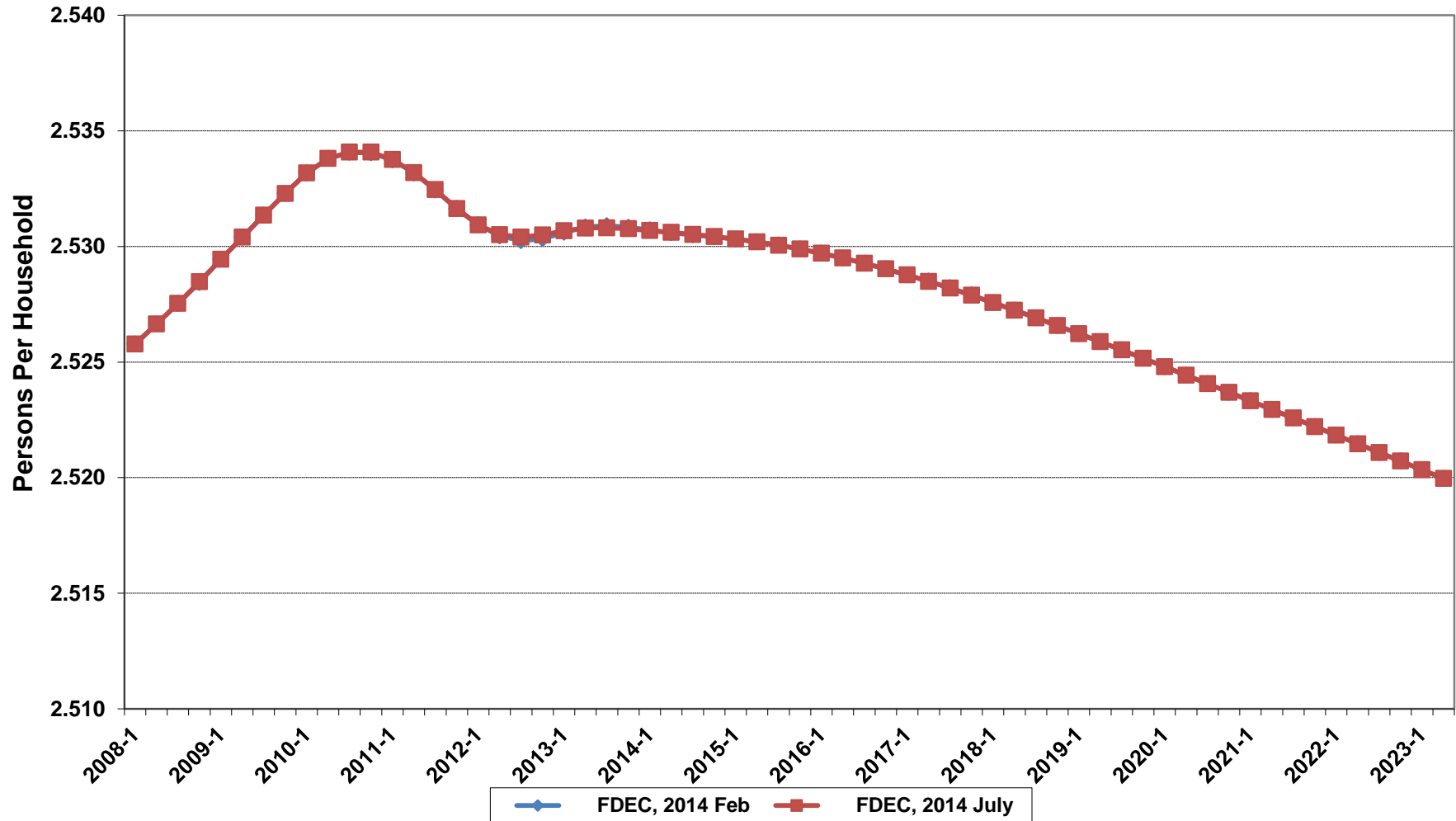
Growth In Florida Resident Households



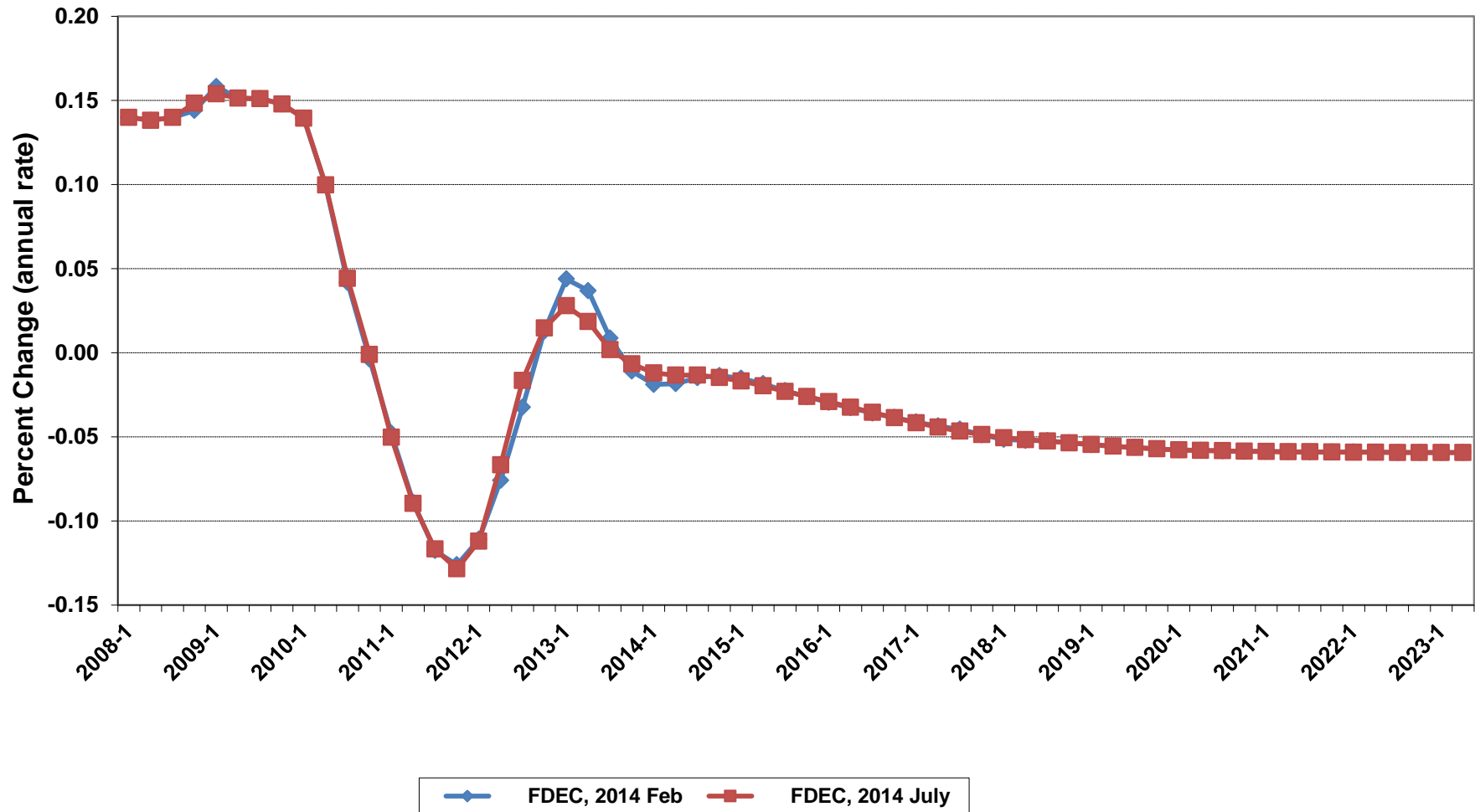
Net Change In Florida Resident Households



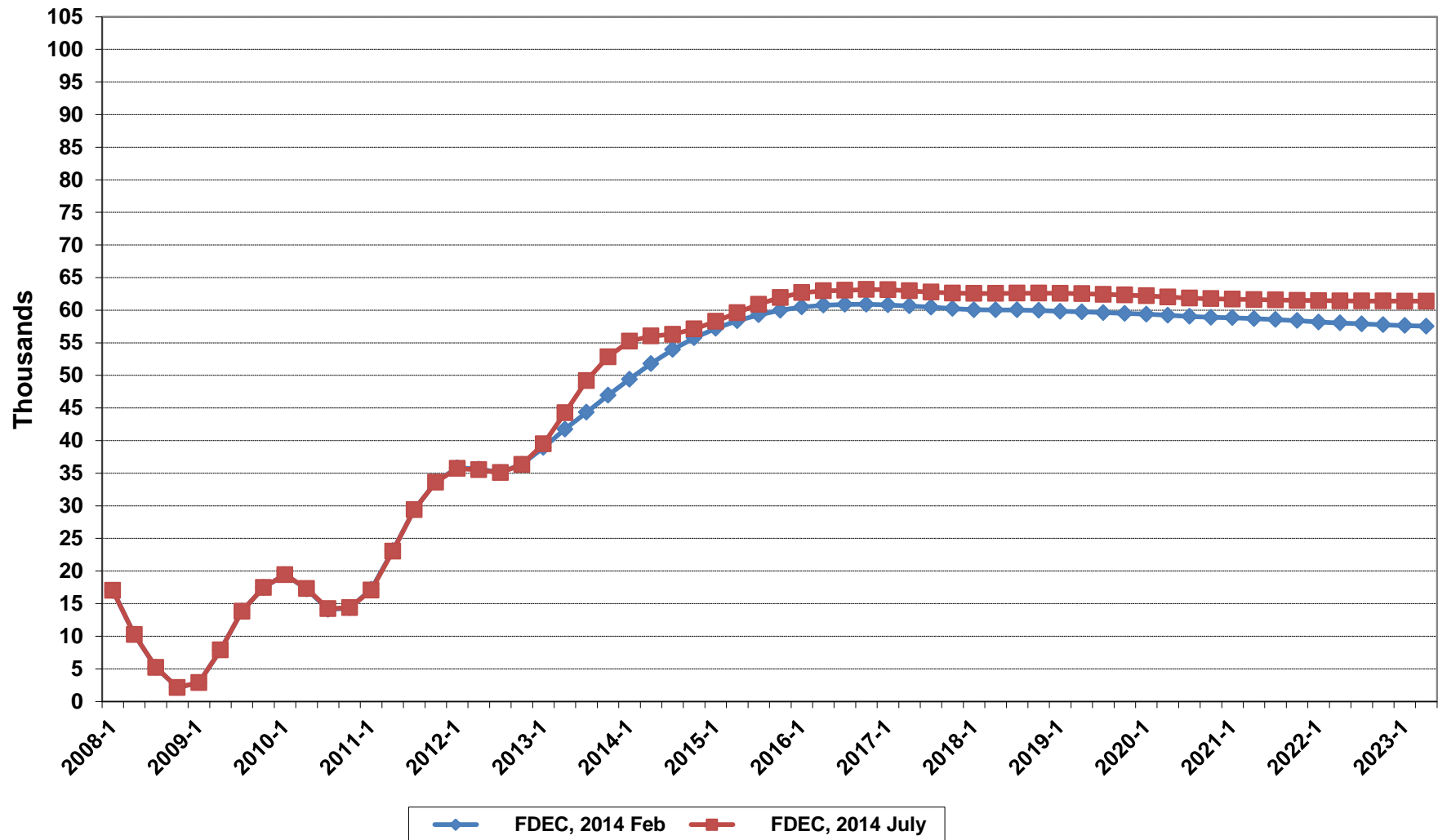
Florida Average Household Size



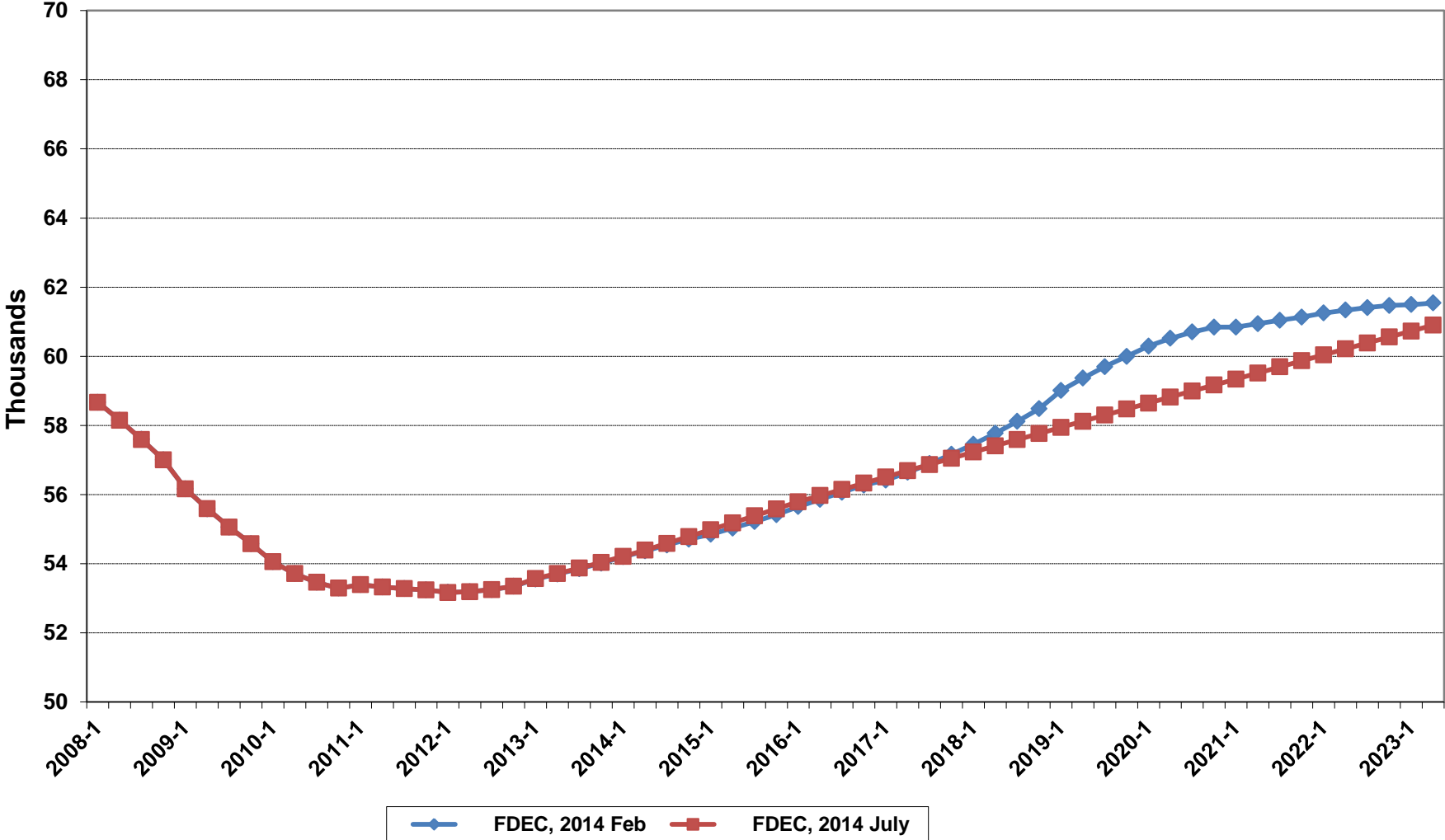
Growth In Florida Household Size



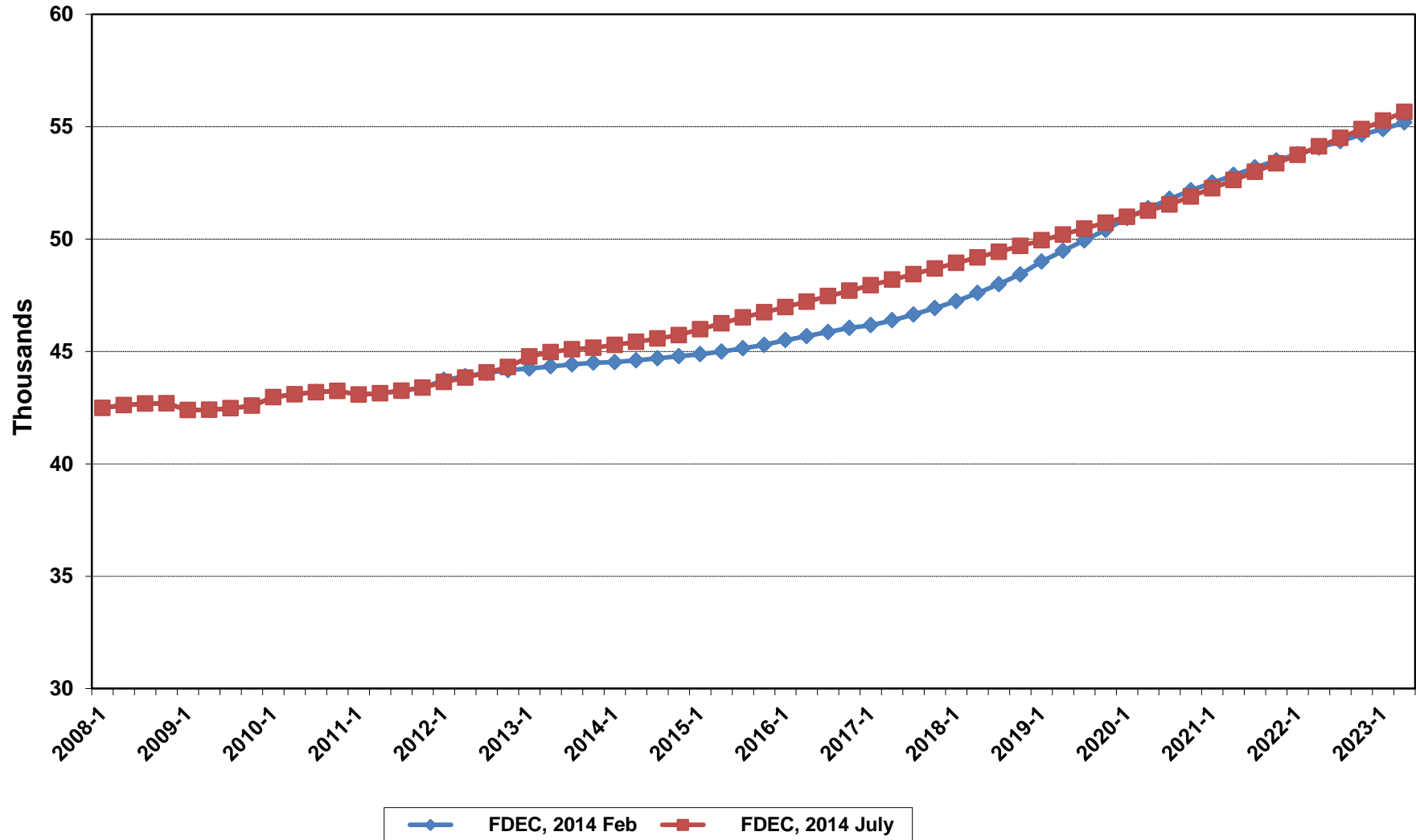
Florida Net Migration



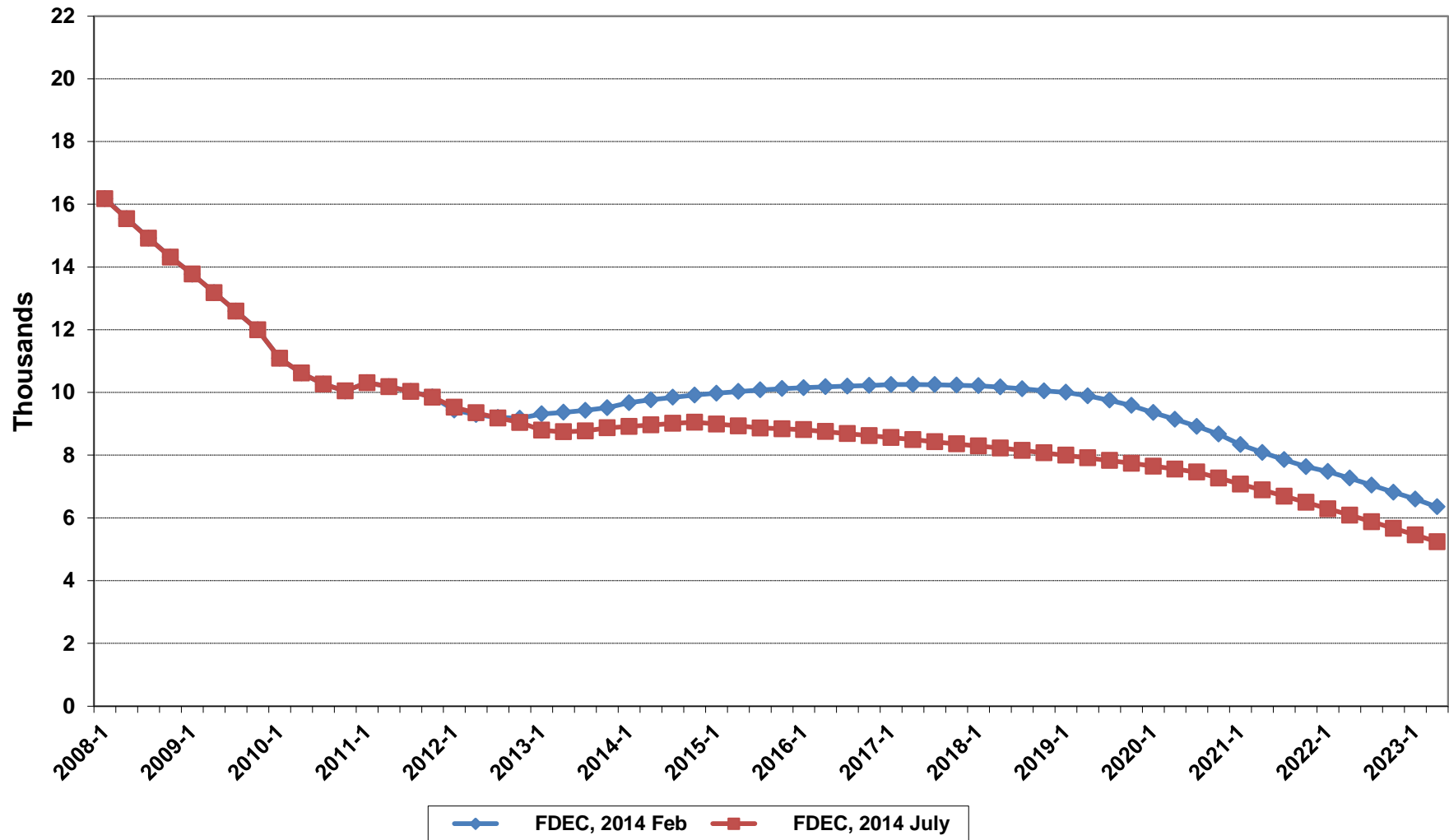
Florida Resident Births



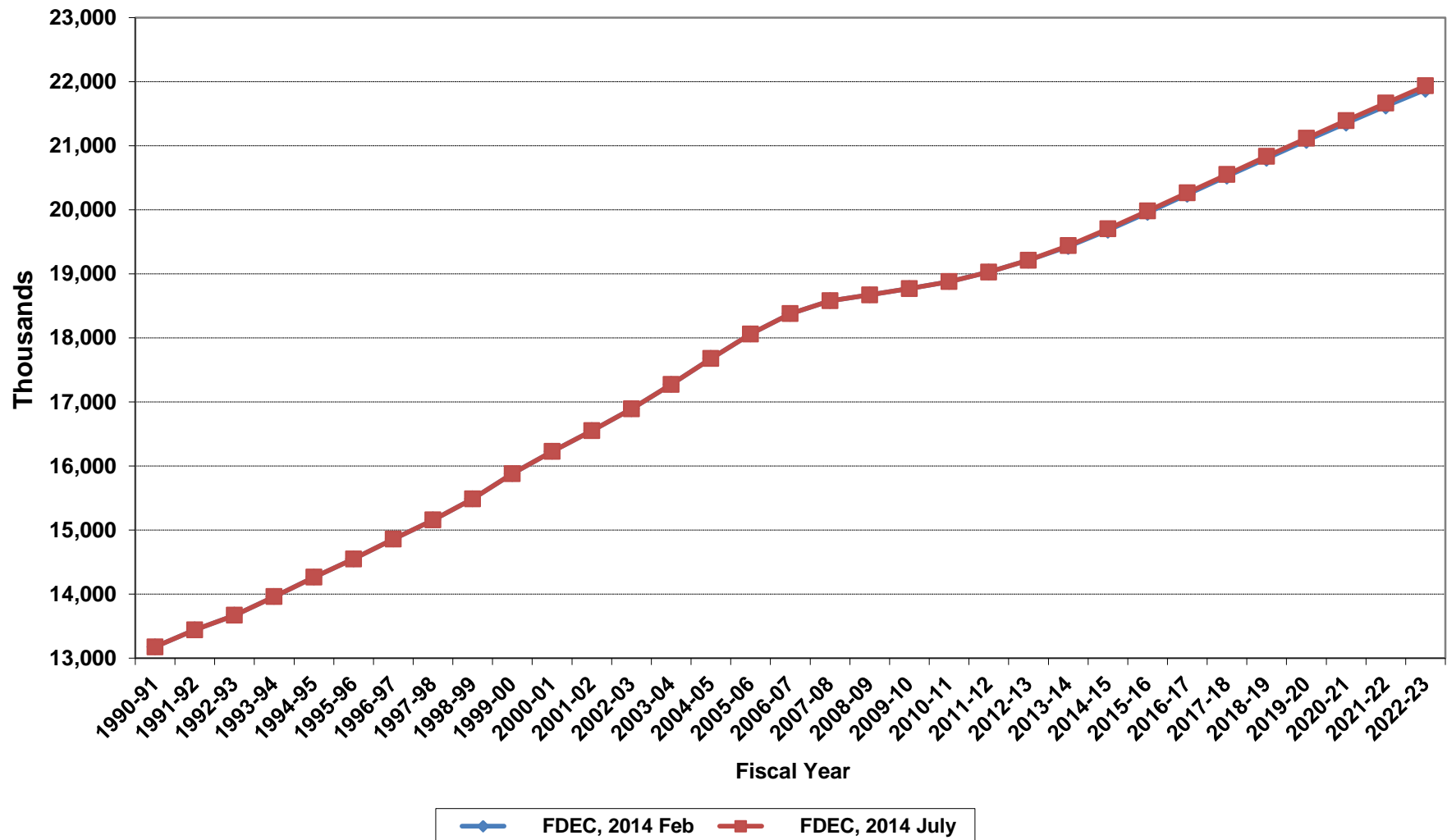
Florida Resident Deaths



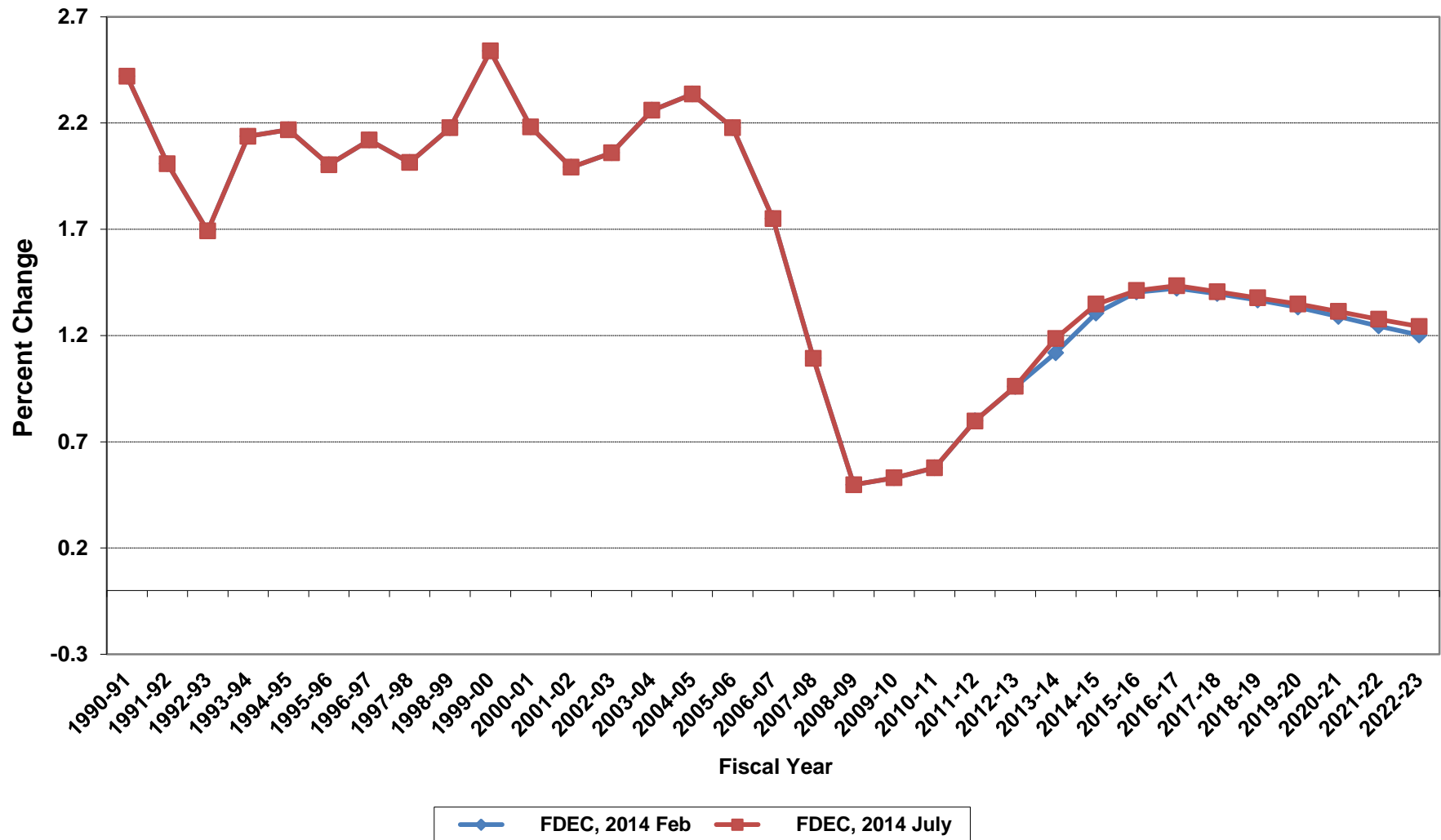
Florida Net Natural Increase



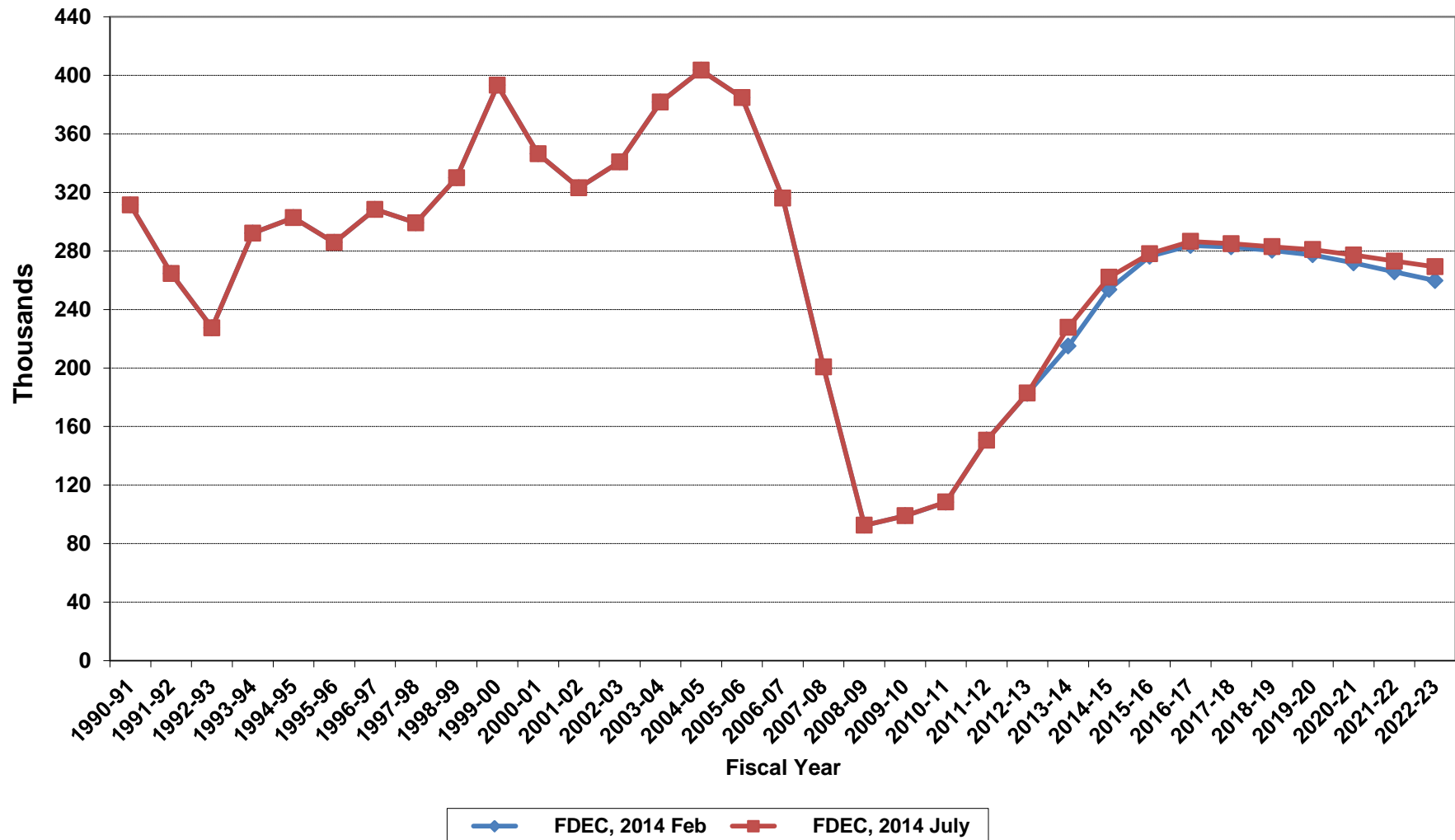
Florida Resident Population



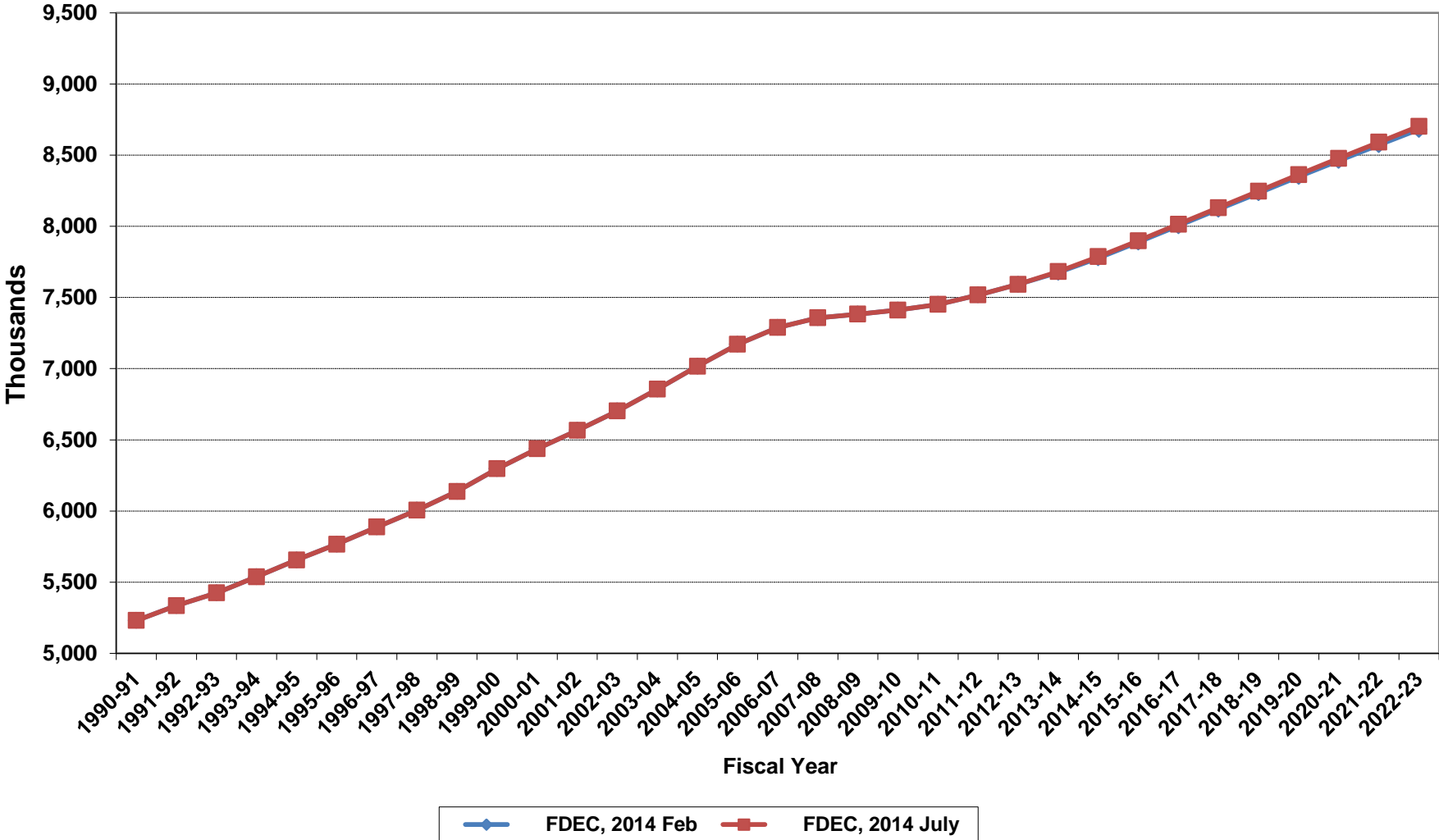
Growth In Florida Resident Population



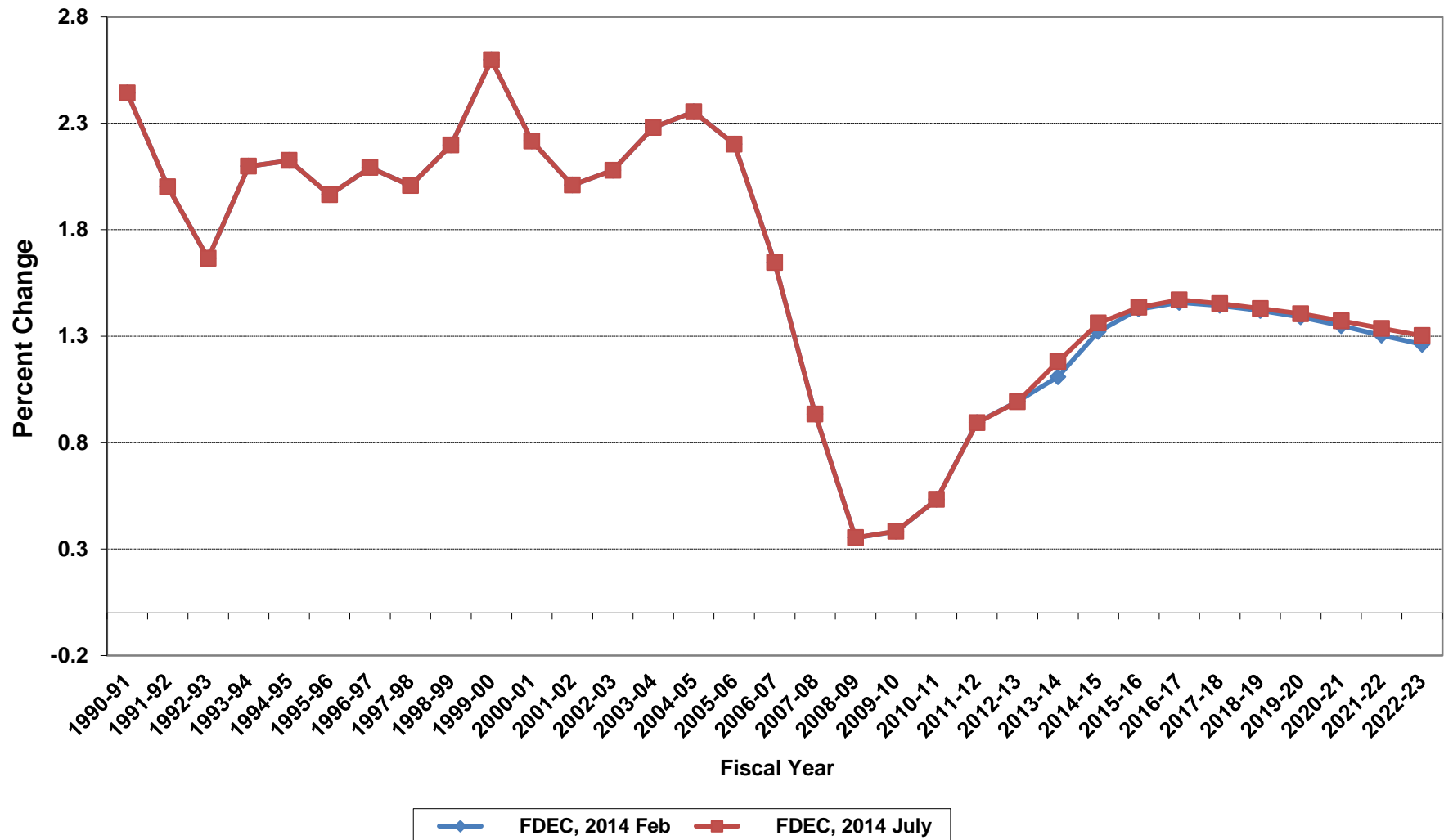
Net Change In Florida Resident Population



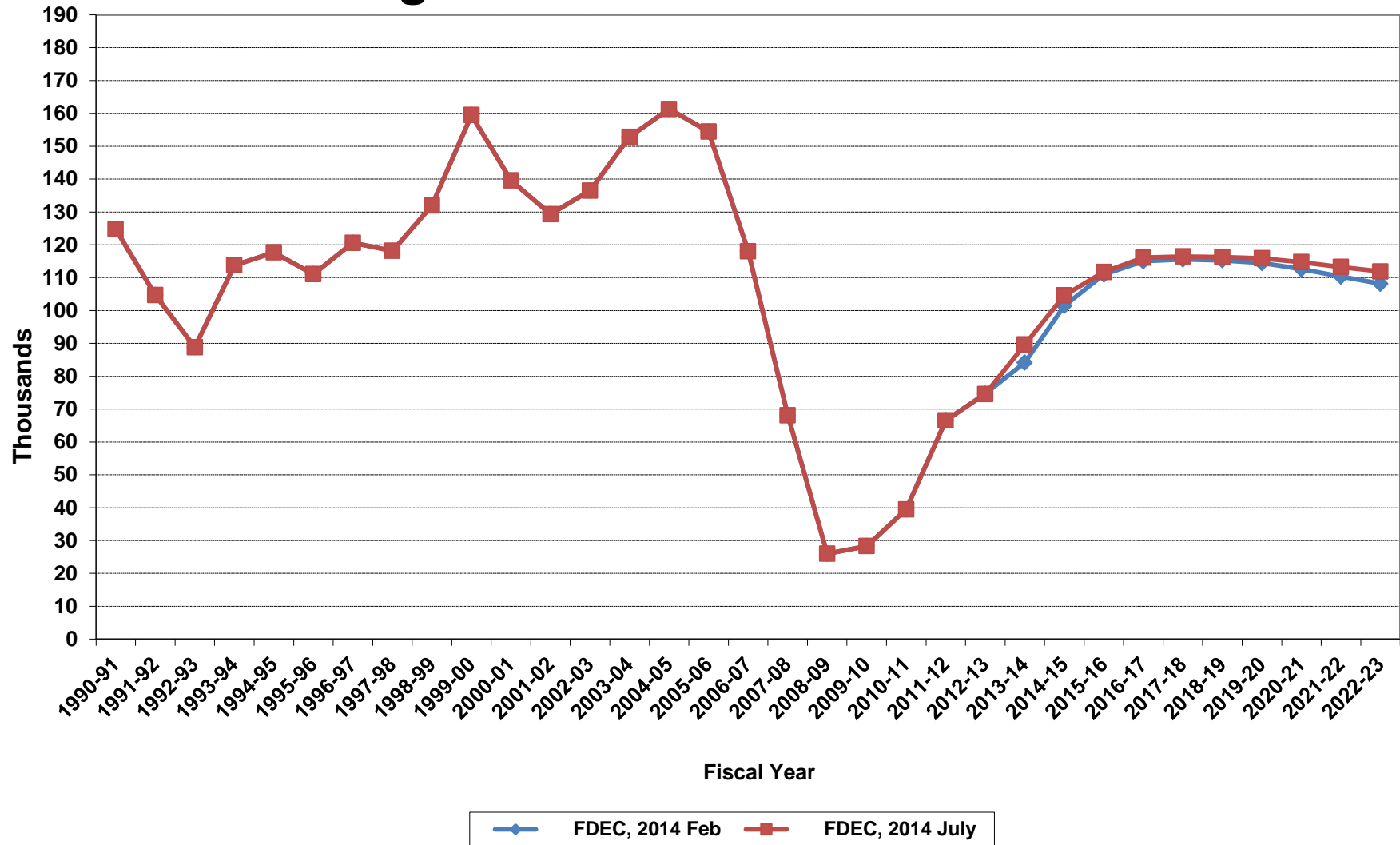
Florida Resident Households



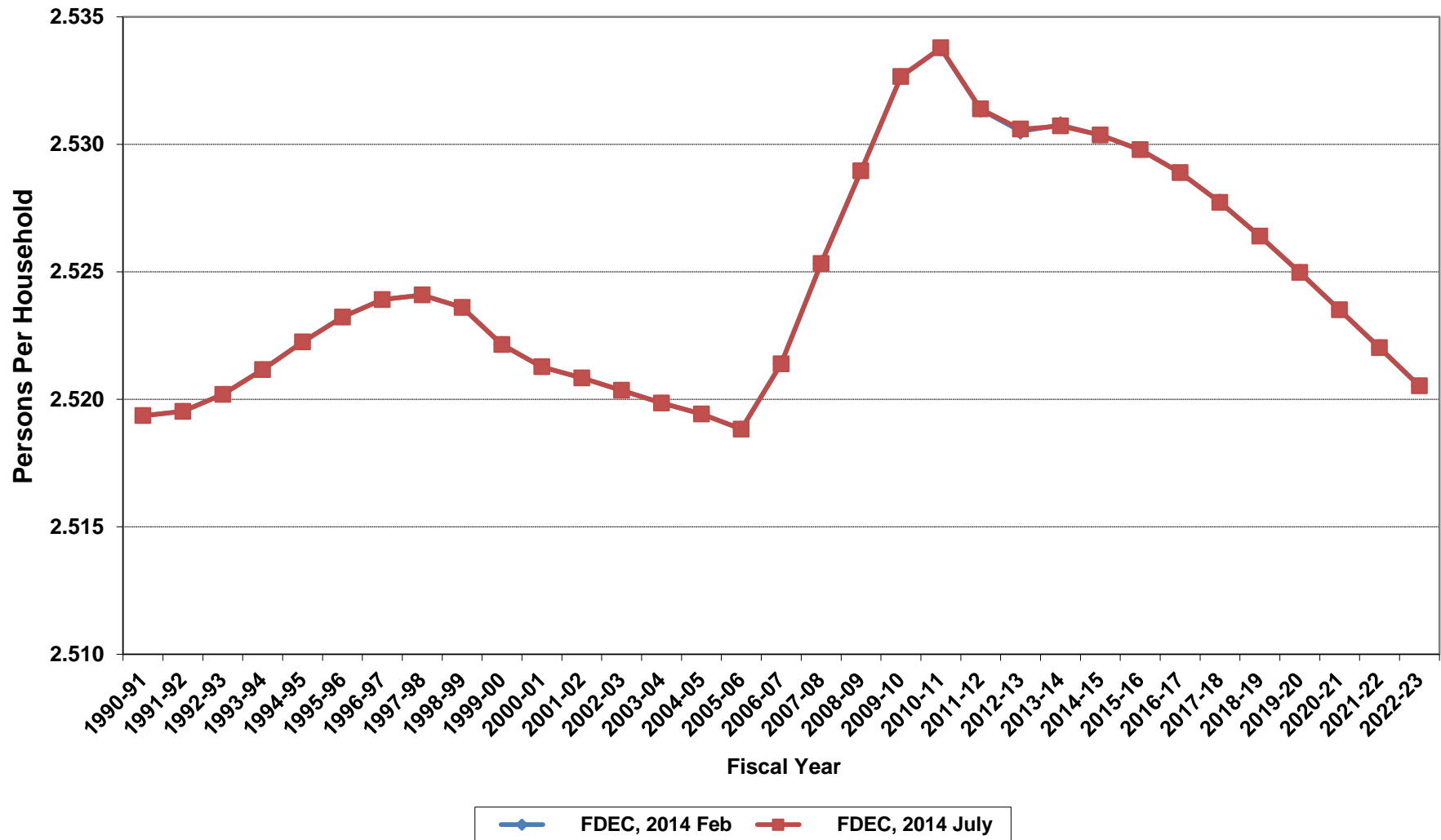
Growth In Florida Resident Households



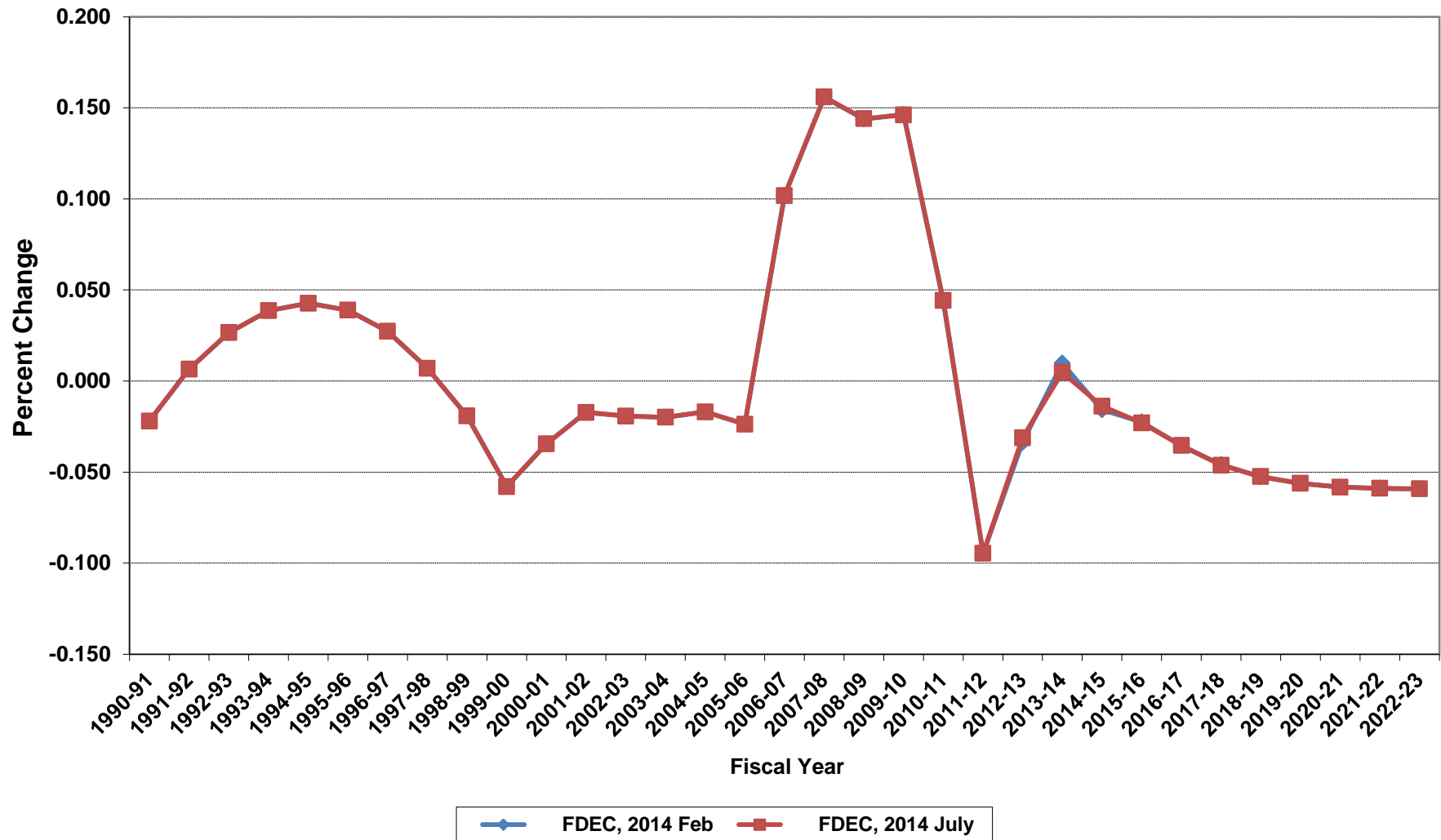
Net Change In Florida Resident Households



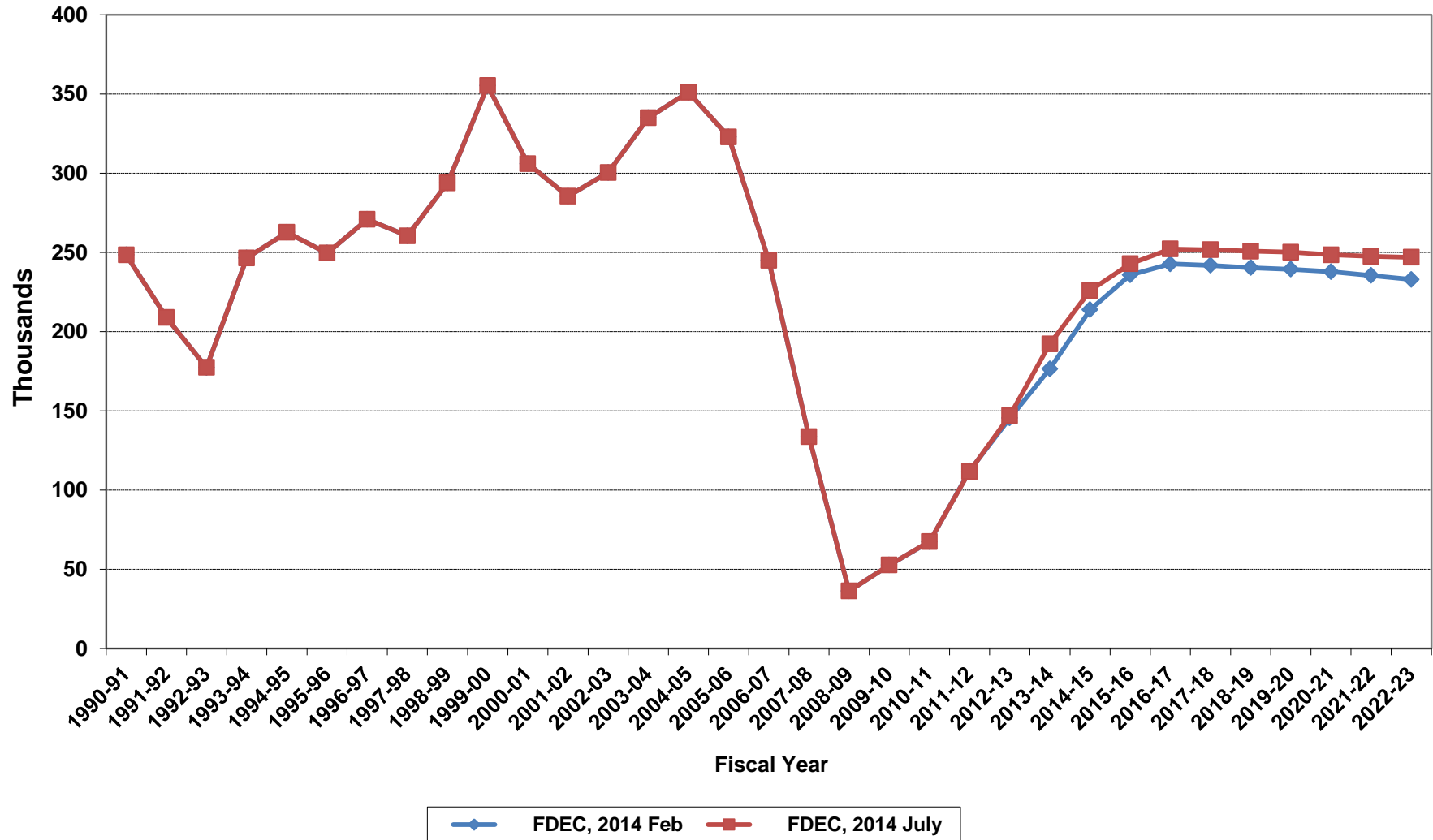
Average Florida Household Size



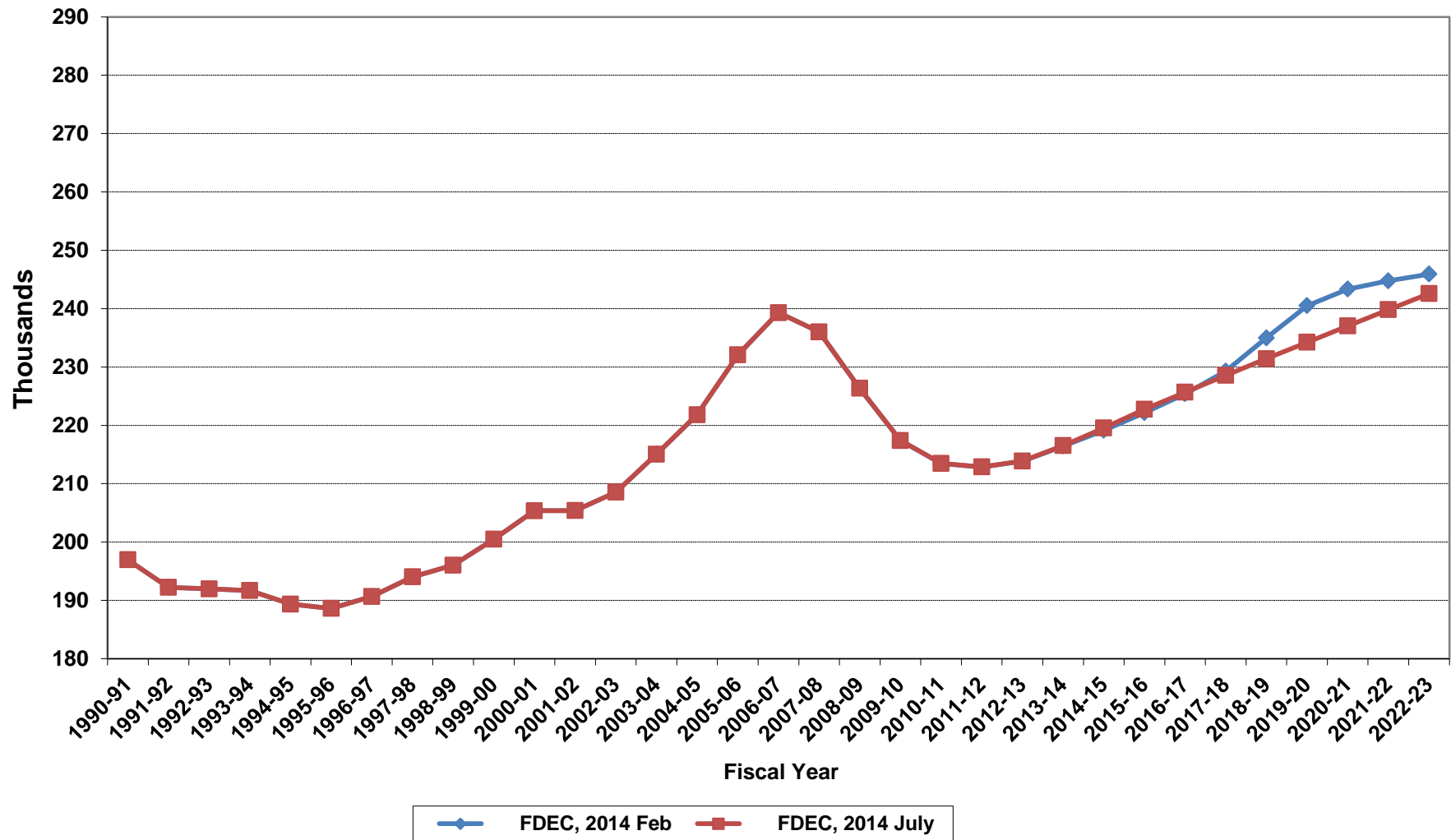
Growth In Average Florida Household Size



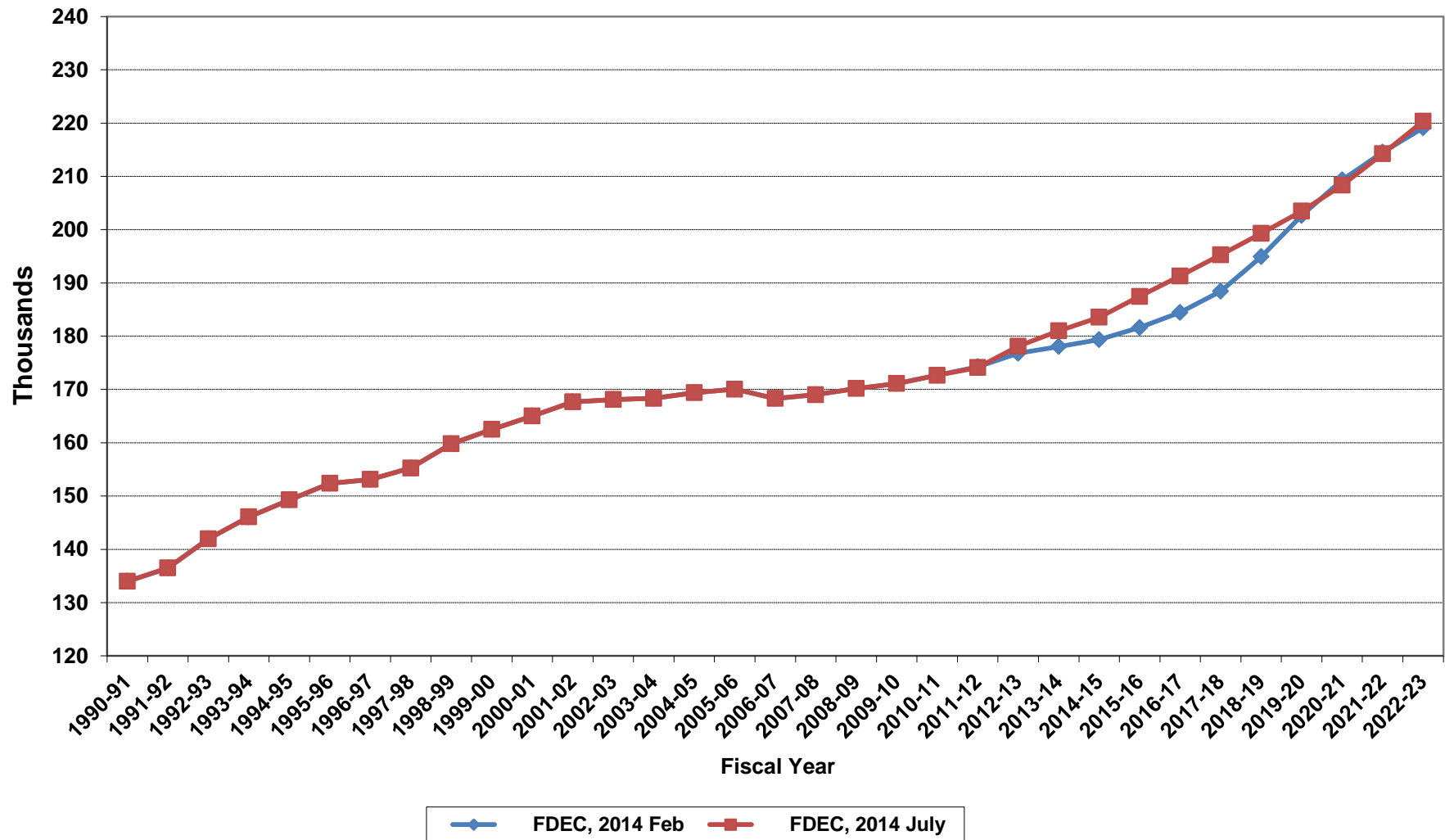
Florida Net Migration



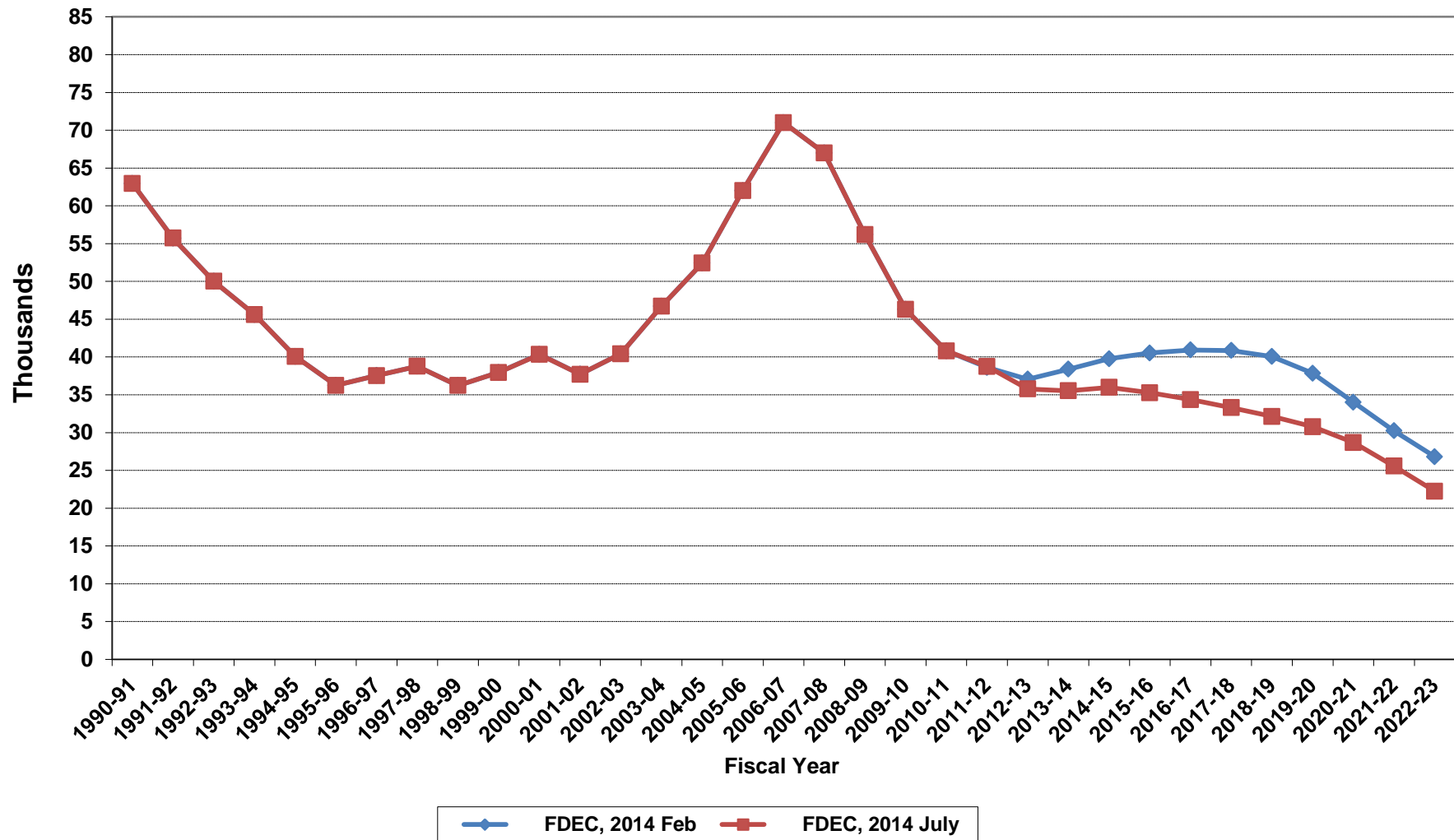
Florida Resident Live Births



Florida Resident Deaths



Florida Net Natural Increase



Florida Population and Components of Change

Fiscal Year	Population (End of Fiscal Year)	Growth Rate	Annual Change in Population	Births	Deaths	Net Natural Increase	Net Migration
1950 - 51	2,981,346	6.50%	181,931	67,486	27,670	39,816	142,115
1951 - 52	3,155,442	5.84%	174,096	72,383	28,942	43,441	130,655
1952 - 53	3,312,521	4.98%	157,079	76,954	29,761	47,193	109,886
1953 - 54	3,504,323	5.79%	191,802	82,725	31,055	51,670	140,132
1954 - 55	3,747,400	6.94%	243,077	86,643	32,176	54,467	188,610
1955 - 56	4,046,062	7.97%	298,662	92,941	34,932	58,009	240,653
1956 - 57	4,370,045	8.01%	323,983	100,990	38,269	62,721	261,262
1957 - 58	4,629,510	5.94%	259,465	105,972	41,911	64,061	195,404
1958 - 59	4,812,270	3.95%	182,760	110,409	43,674	66,735	116,025
1959 - 60	4,998,508	3.87%	186,238	114,428	46,057	68,371	117,867
1960 - 61	5,185,913	3.75%	187,405	116,449	48,388	68,061	119,344
1961 - 62	5,367,899	3.51%	181,986	116,120	50,346	65,774	116,212
1962 - 63	5,553,522	3.46%	185,623	114,709	54,453	60,256	125,367
1963 - 64	5,728,499	3.15%	174,977	115,002	56,229	58,773	116,204
1964 - 65	5,881,195	2.67%	152,696	110,515	57,734	52,781	99,915
1965 - 66	6,065,768	3.14%	184,573	104,367	61,217	43,150	141,423
1966 - 67	6,249,674	3.03%	183,906	101,209	62,577	38,632	145,274
1967 - 68	6,441,756	3.07%	192,082	100,320	66,134	34,186	157,896
1968 - 69	6,633,546	2.98%	191,790	104,286	71,285	33,001	158,789
1969 - 70	6,861,118	3.43%	227,572	111,511	73,831	37,680	189,892
1970 - 71	7,233,583	5.43%	372,465	117,012	75,354	41,658	330,807
1971 - 72	7,681,540	6.19%	447,957	113,568	79,717	33,851	414,106
1972 - 73	8,157,883	6.20%	476,343	107,804	86,232	21,572	454,771
1973 - 74	8,515,208	4.38%	357,325	109,366	88,459	20,907	336,418
1974 - 75	8,648,587	1.57%	133,379	108,686	87,224	21,462	111,917
1975 - 76	8,782,975	1.55%	134,388	104,022	88,129	15,893	118,495
1976 - 77	8,972,678	2.16%	189,703	107,623	90,443	17,180	172,523
1977 - 78	9,225,527	2.82%	252,849	112,268	93,383	18,885	233,964
1978 - 79	9,523,728	3.23%	298,201	116,393	96,801	19,592	278,609
1979 - 80	9,914,652	4.10%	390,924	126,673	101,048	25,625	365,299
1980 - 81	10,212,969	3.01%	298,317	135,560	107,562	27,998	270,319
1981 - 82	10,492,851	2.74%	279,882	141,593	108,644	32,949	246,933
1982 - 83	10,748,466	2.44%	255,615	146,853	110,497	36,356	219,259
1983 - 84	11,065,911	2.95%	317,445	151,748	113,939	37,809	279,636
1984 - 85	11,405,533	3.07%	339,622	159,819	117,539	42,280	297,342
1985 - 86	11,740,069	2.93%	334,536	165,857	122,453	43,404	291,132
1986 - 87	12,083,241	2.92%	343,172	170,819	124,946	45,873	297,299
1987 - 88	12,410,339	2.71%	327,098	179,541	129,413	50,128	276,970
1988 - 89	12,723,719	2.53%	313,380	188,390	131,992	56,398	256,982
1989 - 90	13,017,296	2.31%	293,577	197,181	132,503	64,678	228,899
1990 - 91	13,326,892	2.38%	309,596	197,180	134,093	63,087	246,509
1991 - 92	13,552,021	1.69%	225,129	191,810	136,280	55,530	169,599
1992 - 93	13,802,571	1.85%	250,550	192,051	142,087	49,964	200,586
1993 - 94	14,120,323	2.30%	317,752	191,840	146,101	45,739	272,013
1994 - 95	14,406,418	2.03%	286,095	189,292	149,161	40,131	245,964
1995 - 96	14,701,040	2.05%	294,622	188,584	152,570	36,014	258,608
1996 - 97	15,012,615	2.12%	311,575	190,587	153,067	37,520	274,055
1997 - 98	15,310,069	1.98%	297,454	194,242	155,080	39,162	258,292
1998 - 99	15,680,164	2.42%	370,095	195,897	159,988	35,909	334,186
1999 - 00	16,069,889	2.49%	389,725	200,302	162,489	37,813	351,912
2000 - 01	16,385,615	1.96%	315,726	205,798	164,919	40,879	274,847
2001 - 02	16,718,076	2.03%	332,461	205,164	167,812	37,352	295,109
2002 - 03	17,074,258	2.13%	356,182	208,403	168,079	40,324	315,858
2003 - 04	17,475,944	2.35%	401,686	215,298	168,302	46,996	354,690
2004 - 05	17,876,215	2.29%	400,271	221,533	169,302	52,231	348,040
2005 - 06	18,236,885	2.02%	360,670	232,019	170,303	61,716	298,954
2006 - 07	18,501,231	1.45%	264,346	239,635	168,117	71,518	192,828
2007 - 08	18,636,837	0.73%	135,606	236,065	168,966	67,099	68,507
2008 - 09	18,711,844	0.40%	75,007	226,337	170,615	55,722	19,285
2009 - 10	18,826,626	0.61%	114,782	217,408	171,119	46,289	68,493

Florida Population and Components of Change

Fiscal Year	Population (End of Fiscal Year)	Growth Rate	Annual Change in Population	Births	Deaths	Net Natural Increase	Net Migration
2010 - 11	18,941,907	0.61%	115,281	213,469	172,662	40,807	74,474
2011 - 12	19,118,627	0.93%	176,720	212,877	174,121	38,756	137,964
2012 - 13	19,315,344	1.03%	196,717	213,886	178,119	35,767	160,950
2013 - 14	19,568,761	1.31%	253,417	216,513	180,988	35,525	217,892
2014 - 15	19,838,209	1.38%	269,448	219,536	183,545	35,991	233,457
2015 - 16	20,123,222	1.44%	285,013	222,730	187,454	35,276	249,737
2016 - 17	20,409,753	1.42%	286,531	225,678	191,312	34,366	252,165
2017 - 18	20,693,347	1.39%	283,594	228,561	195,256	33,305	250,289
2018 - 19	20,975,588	1.36%	282,241	231,417	199,284	32,133	250,108
2019 - 20	21,254,916	1.33%	279,329	234,239	203,463	30,776	248,553
2020 - 21	21,530,010	1.29%	275,093	237,022	208,329	28,693	246,400
2021 - 22	21,801,065	1.26%	271,055	239,819	214,251	25,568	245,487
2022 - 23	22,068,457	1.23%	267,393	242,573	220,334	22,239	245,154
2023 - 24	22,332,547	1.20%	264,089	245,275	226,591	18,684	245,405
2024 - 25	22,593,690	1.17%	261,143	247,945	233,035	14,910	246,233
2025 - 26	22,851,952	1.14%	258,262	250,512	239,401	11,111	247,151
2026 - 27	23,106,805	1.12%	254,853	252,421	245,432	6,989	247,864
2027 - 28	23,357,646	1.09%	250,840	254,129	251,555	2,574	248,266
2028 - 29	23,603,879	1.05%	246,233	255,772	257,745	-1,973	248,206
2029 - 30	23,844,913	1.02%	241,034	257,345	264,017	-6,672	247,706