

Demographic Estimating Conference
Executive Summary
February 11, 2015

The Demographic Estimating Conference met on February 11, 2015, to adopt a new population forecast. The data reflect final April 1, 2014 population and household estimates, in addition to other recent demographic and economic-related data. Overall, each year of the forecast was slightly increased relative to November's conference projections.

Population growth in Florida continues to strengthen but—relative to Florida's past trends—at lower levels and rates of growth. Historically, Florida's population growth has been driven by net migration (more people permanently moving into the state than leaving). However, net migration fell to record low levels during much of 2008 and into 2009, accounting for 25.7% of population growth during FY 2008-09. During that time period, natural increase (births minus deaths) actually exceeded net migration. Net migration includes both domestic and international migration, and it was primarily the domestic migration component that led to the slowdown in population growth. The lower levels of net migration were largely due to national economic conditions, including weakened housing markets and other effects from the Great Recession that made it difficult for people in the US to relocate to Florida. Reflecting migration's return as a decisive factor, the expected net migration share of Florida's FY 2014-15 population growth is 87.4%.

Florida's population grew by 247,826 (1.29%) between April 1, 2013 and April 1, 2014, the strongest increase seen since 2007. Annual population change is expected to reach 282,256 net new residents (1.45%) in 2015 --- and between 2015 and 2020, annual population change is expected to remain above 285,000 net new residents per year.

April 1	Population	Percent Change	Change
2012	19,074,434	0.90%	169,364
2013	19,259,543	0.97%	185,109
2014	19,507,369	1.29%	247,826
2015	19,789,625	1.45%	282,256
2016	20,075,695	1.45%	286,070
2017	20,367,465	1.45%	291,770
2018	20,658,700	1.43%	291,235
2019	20,948,450	1.40%	289,750
2020	21,236,667	1.38%	288,217

Between April 1, 2010 and April 1, 2020, population growth is expected to average 243,534 net new residents per year, representing a compound growth rate of 1.2% over this 10-year time horizon. These increases are analogous to adding a city the size of Hialeah every year. By 2016, Florida's population is expected to break the 20-million mark.

Of note, the population estimates developed by the U.S. Census Bureau continue to be higher than the official state estimates adopted by the Demographic Estimating Conference. As of July 1, 2014, this difference was over 300,000 persons. The Legislative Office of Economic and Demographic Research is continuing to work with the Census Bureau to investigate this further.

Florida Demographic Estimating Conference

Tables
Conference Packet

February 11, 2015

Florida Resident Population

April 1

Year	Florida Demographic Estimating Conference November 2014			Florida Demographic Estimating Conference February 2015		
	Population	% Change	Change	Population	% Change	Change
1990	12,938,071	2.27%	287,136	12,938,071	2.27%	287,136
1991	13,258,732	2.48%	320,661	13,258,732	2.48%	320,661
1992	13,497,541	1.80%	238,809	13,497,541	1.80%	238,809
1993	13,730,115	1.72%	232,574	13,730,115	1.72%	232,574
1994	14,043,757	2.28%	313,642	14,043,757	2.28%	313,642
1995	14,335,992	2.08%	292,235	14,335,992	2.08%	292,235
1996	14,623,421	2.00%	287,429	14,623,421	2.00%	287,429
1997	14,938,314	2.15%	314,893	14,938,314	2.15%	314,893
1998	15,230,421	1.96%	292,107	15,230,421	1.96%	292,107
1999	15,580,244	2.30%	349,823	15,580,244	2.30%	349,823
2000	15,982,824	2.58%	402,580	15,982,824	2.58%	402,580
2001	16,305,100	2.02%	322,276	16,305,100	2.02%	322,276
2002	16,634,256	2.02%	329,156	16,634,256	2.02%	329,156
2003	16,979,706	2.08%	345,450	16,979,706	2.08%	345,450
2004	17,374,824	2.33%	395,118	17,374,824	2.33%	395,118
2005	17,778,156	2.32%	403,332	17,778,156	2.32%	403,332
2006	18,154,475	2.12%	376,319	18,154,475	2.12%	376,319
2007	18,446,768	1.61%	292,293	18,446,768	1.61%	292,293
2008	18,613,905	0.91%	167,137	18,613,905	0.91%	167,137
2009	18,687,425	0.39%	73,520	18,687,425	0.39%	73,520
2010	18,801,332	0.61%	113,885	18,801,332	0.61%	113,907
2011	18,905,070	0.55%	103,738	18,905,070	0.55%	103,738
2012	19,074,434	0.90%	169,364	19,074,434	0.90%	169,364
2013	19,259,543	0.97%	185,109	19,259,543	0.97%	185,109
2014	19,507,369	1.29%	247,826	19,507,369	1.29%	247,826
Begins forecast						
2015	19,779,196	1.39%	271,827	19,789,625	1.45%	282,256
2016	20,065,931	1.45%	286,735	20,075,695	1.45%	286,070
2017	20,355,635	1.44%	289,704	20,367,465	1.45%	291,770
2018	20,642,241	1.41%	286,606	20,658,700	1.43%	291,235
2019	20,927,309	1.38%	285,068	20,948,450	1.40%	289,750
5-Year Averages						
2020	21,209,371	1.41%	286,035	21,236,667	1.42%	289,408
2025	22,551,073	1.23%	268,340	22,600,346	1.25%	272,736
2030	23,805,958	1.09%	250,977	23,872,566	1.10%	254,444
2035	24,940,769	0.94%	226,962	25,027,345	0.95%	230,956
2040	25,987,899	0.83%	209,426	26,081,392	0.83%	210,809

Florida Resident Households

April 1

Year	Florida Demographic Estimating Conference November 2014			Florida Demographic Estimating Conference February 2015			
	Households	% Change	Change	Households	% Change	Change	
1990	5,134,869	3.40%	168,985	5,134,869	3.40%	168,985	
1991	5,283,154	2.89%	148,285	5,283,154	2.89%	148,285	
1992	5,378,499	1.80%	95,345	5,378,499	1.80%	95,345	
1993	5,478,476	1.86%	99,977	5,478,476	1.86%	99,977	
1994	5,589,093	2.02%	110,617	5,589,093	2.02%	110,617	
1995	5,697,328	1.94%	108,235	5,697,328	1.94%	108,235	
1996	5,806,031	1.91%	108,703	5,806,031	1.91%	108,703	
1997	5,929,613	2.13%	123,582	5,929,613	2.13%	123,582	
1998	6,040,514	1.87%	110,901	6,040,514	1.87%	110,901	
1999	6,182,346	2.35%	141,832	6,182,346	2.35%	141,832	
2000	6,338,075	2.52%	155,729	6,338,075	2.52%	155,729	
2001	6,467,215	2.04%	129,140	6,467,215	2.04%	129,140	
2002	6,599,035	2.04%	131,820	6,599,035	2.04%	131,820	
2003	6,737,370	2.10%	138,335	6,737,370	2.10%	138,335	
2004	6,895,469	2.35%	158,099	6,895,469	2.35%	158,099	
2005	7,056,889	2.34%	161,420	7,056,889	2.34%	161,420	
2006	7,207,645	2.14%	150,756	7,207,645	2.14%	150,756	
2007	7,312,907	1.46%	105,262	7,312,907	1.46%	105,262	
2008	7,368,319	0.76%	55,412	7,368,319	0.76%	55,412	
2009	7,386,570	0.25%	18,251	7,386,570	0.25%	18,251	
2010	7,420,812	0.46%	34,242	7,420,812	0.46%	34,242	
2011	7,461,978	0.55%	41,166	7,461,978	0.55%	41,166	
2012	7,537,442	1.01%	75,464	7,537,442	1.01%	75,464	
2013	7,610,153	0.96%	72,711	7,610,153	0.96%	72,711	
2014	7,708,463	1.29%	98,310	7,669,541	0.78%	59,388	
Begins forecast							
2015	7,817,051	1.41%	108,588	7,782,772	1.48%	113,231	
2016	7,932,434	1.48%	115,383	7,900,810	1.52%	118,038	
2017	8,050,060	1.48%	117,626	8,021,957	1.53%	121,147	
2018	8,167,365	1.46%	117,305	8,143,365	1.51%	121,408	
2019	8,284,587	1.44%	117,222	8,264,373	1.49%	121,008	
			5-Year Averages				5-Year Averages
2020	8,401,039	1.45%	116,798	8,384,948	1.50%	120,435	
2025	8,958,906	1.29%	111,573	8,964,598	1.35%	115,930	
2030	9,485,504	1.15%	105,320	9,505,195	1.18%	108,119	
2035	9,967,163	1.00%	96,332	9,994,295	1.01%	97,820	
2040	10,416,454	0.89%	89,858	10,458,267	0.91%	92,794	

Quarterly Data Table

QUARTERLY FORECAST TABLES

	<u>2008-1</u>	<u>2008-2</u>	<u>2008-3</u>	<u>2008-4</u>	<u>2009-1</u>	<u>2009-2</u>	<u>2009-3</u>	<u>2009-4</u>	<u>2010-1</u>	<u>2010-2</u>	<u>2010-3</u>	<u>2010-4</u>	<u>2011-1</u>	<u>2011-2</u>	<u>2011-3</u>	<u>2011-4</u>	<u>2012-1</u>
Population																	
FDEC, 2014 November	18,599.6	18,625.4	18,645.5	18,661.9	18,678.6	18,699.6	18,726.1	18,755.5	18,786.1	18,814.0	18,838.5	18,862.9	18,890.3	18,923.5	18,963.0	19,006.5	19,051.7
FDEC, 2015 February	18,599.6	18,625.4	18,645.5	18,661.9	18,678.6	18,699.6	18,726.1	18,755.5	18,786.1	18,814.0	18,838.5	18,862.9	18,890.3	18,923.5	18,962.8	19,006.3	19,051.6
Population Growth Rate																	
FDEC, 2014 November	0.72	0.56	0.43	0.35	0.36	0.45	0.57	0.63	0.65	0.60	0.52	0.52	0.58	0.71	0.84	0.92	0.96
FDEC, 2015 February	0.72	0.56	0.43	0.35	0.36	0.45	0.57	0.63	0.65	0.60	0.52	0.52	0.58	0.70	0.83	0.92	0.96
Net Change in Population																	
FDEC, 2014 November	33.2	25.8	20.1	16.4	16.6	21.1	26.4	29.5	30.5	27.9	24.5	24.4	27.4	33.2	39.5	43.5	45.2
FDEC, 2015 February	33.2	25.8	20.1	16.4	16.6	21.1	26.4	29.5	30.5	27.9	24.5	24.4	27.3	33.2	39.4	43.5	45.3
Households																	
FDEC, 2014 November	7,363.9	7,371.6	7,377.0	7,380.7	7,384.5	7,390.0	7,397.7	7,406.6	7,416.0	7,425.2	7,434.0	7,443.7	7,455.4	7,470.2	7,488.0	7,507.6	7,527.5
FDEC, 2015 February	7,363.9	7,371.6	7,377.0	7,380.7	7,384.5	7,390.0	7,397.7	7,406.6	7,416.0	7,425.3	7,434.4	7,444.2	7,455.7	7,469.9	7,487.0	7,506.3	7,526.9
Household Growth Rate																	
FDEC, 2014 November	0.58	0.42	0.29	0.20	0.20	0.30	0.41	0.48	0.51	0.50	0.48	0.52	0.63	0.80	0.95	1.05	1.07
FDEC, 2015 February	0.58	0.42	0.29	0.20	0.20	0.30	0.41	0.48	0.51	0.50	0.49	0.53	0.62	0.77	0.92	1.03	1.10
Net Change in Households																	
FDEC, 2014 November	10.6	7.7	5.4	3.8	3.7	5.5	7.7	8.9	9.5	9.2	8.8	9.7	11.7	14.8	17.8	19.6	20.0
FDEC, 2015 February	10.6	7.7	5.4	3.8	3.7	5.5	7.7	8.9	9.5	9.3	9.1	9.8	11.5	14.2	17.1	19.2	20.6
Household Size																	
FDEC, 2014 November	2.526	2.527	2.528	2.528	2.529	2.530	2.531	2.532	2.533	2.534	2.534	2.534	2.534	2.533	2.532	2.532	2.531
FDEC, 2015 February	2.526	2.527	2.528	2.528	2.529	2.530	2.531	2.532	2.533	2.534	2.534	2.534	2.534	2.533	2.533	2.532	2.531
Household Size Growth Rate																	
FDEC, 2014 November	0.14	0.14	0.14	0.15	0.15	0.15	0.15	0.15	0.14	0.10	0.04	0.00	-0.05	-0.09	-0.12	-0.13	-0.11
FDEC, 2015 February	0.14	0.14	0.14	0.15	0.15	0.15	0.15	0.15	0.14	0.09	0.03	-0.01	-0.04	-0.06	-0.08	-0.11	-0.15
Net Migration																	
FDEC, 2014 November	17.0	10.3	5.2	2.1	2.9	7.9	13.8	17.5	19.4	17.3	14.2	14.4	17.1	23.1	29.4	33.6	35.7
FDEC, 2015 February	17.0	10.3	5.2	2.1	2.9	7.9	13.8	17.5	19.4	17.3	14.3	14.4	17.0	23.0	29.3	33.6	35.8
Births																	
FDEC, 2014 November	58.7	58.1	57.6	57.0	56.2	55.6	55.1	54.6	54.1	53.7	53.5	53.3	53.4	53.3	53.3	53.2	53.2
FDEC, 2015 February	58.7	58.1	57.6	57.0	56.2	55.6	55.1	54.6	54.1	53.7	53.5	53.3	53.4	53.3	53.3	53.2	53.2
Deaths																	
FDEC, 2014 November	42.5	42.6	42.7	42.7	42.4	42.4	42.5	42.6	43.0	43.1	43.2	43.2	43.1	43.1	43.2	43.4	43.6
FDEC, 2015 February	42.5	42.6	42.7	42.7	42.4	42.4	42.5	42.6	43.0	43.1	43.2	43.2	43.1	43.1	43.2	43.4	43.6
Net Natural Increase																	
FDEC, 2014 November	16.2	15.5	14.9	14.3	13.8	13.2	12.6	12.0	11.1	10.6	10.3	10.0	10.3	10.2	10.0	9.9	9.5
FDEC, 2015 February	16.2	15.5	14.9	14.3	13.8	13.2	12.6	12.0	11.1	10.6	10.3	10.0	10.3	10.2	10.0	9.9	9.5

Quarterly Data Table

QUARTERLY FORECAST TABLES

	<u>2012-2</u>	<u>2012-3</u>	<u>2012-4</u>	<u>2013-1</u>	<u>2013-2</u>	<u>2013-3</u>	<u>2013-4</u>	<u>2014-1</u>	<u>2014-2</u>	<u>2014-3</u>	<u>2014-4</u>	<u>2015-1</u>	<u>2015-2</u>	<u>2015-3</u>	<u>2015-4</u>	<u>2016-1</u>	<u>2016-2</u>
Population																	
FDEC, 2014 November	19,096.5	19,140.7	19,186.0	19,234.4	19,287.7	19,346.3	19,408.8	19,474.2	19,540.6	19,607.5	19,675.4	19,744.4	19,814.5	19,885.5	19,957.3	20,029.6	20,102.2
FDEC, 2015 February	19,096.6	19,141.0	19,186.5	19,234.6	19,287.4	19,345.3	19,407.6	19,473.5	19,542.0	19,612.2	19,683.0	19,754.1	19,825.2	19,896.5	19,967.8	20,039.5	20,111.9
Population Growth Rate																	
FDEC, 2014 November	0.94	0.93	0.95	1.01	1.11	1.22	1.30	1.35	1.37	1.38	1.39	1.41	1.43	1.44	1.45	1.46	1.46
FDEC, 2015 February	0.95	0.93	0.95	1.01	1.10	1.21	1.29	1.37	1.41	1.44	1.45	1.45	1.45	1.45	1.44	1.44	1.45
Net Change in Population																	
FDEC, 2014 November	44.8	44.2	45.3	48.3	53.3	58.6	62.6	65.3	66.4	66.9	67.9	69.0	70.0	71.0	71.8	72.4	72.5
FDEC, 2015 February	45.0	44.4	45.4	48.1	52.8	57.9	62.2	66.0	68.5	70.1	70.8	71.1	71.1	71.3	71.4	71.7	72.4
Households																	
FDEC, 2014 November	7,546.5	7,564.3	7,581.9	7,600.5	7,621.2	7,644.3	7,669.2	7,695.2	7,721.7	7,748.4	7,775.5	7,803.1	7,831.2	7,859.7	7,888.6	7,917.8	7,947.1
FDEC, 2015 February	7,547.4	7,567.0	7,585.6	7,602.4	7,617.2	7,630.8	7,644.6	7,660.7	7,681.2	7,709.9	7,739.0	7,768.2	7,797.4	7,826.7	7,856.2	7,885.8	7,915.8
Household Growth Rate																	
FDEC, 2014 November	1.01	0.95	0.94	0.98	1.09	1.22	1.31	1.37	1.38	1.39	1.41	1.43	1.45	1.46	1.48	1.49	1.49
FDEC, 2015 February	1.10	1.04	0.99	0.88	0.78	0.72	0.72	0.84	1.08	1.50	1.52	1.52	1.51	1.51	1.52	1.52	1.53
Net Change in Households																	
FDEC, 2014 November	19.0	17.8	17.6	18.6	20.7	23.1	24.9	26.0	26.5	26.7	27.1	27.6	28.1	28.5	28.9	29.2	29.3
FDEC, 2015 February	20.5	19.6	18.6	16.7	14.8	13.6	13.8	16.1	20.6	28.6	29.1	29.2	29.2	29.3	29.5	29.7	29.9
Household Size																	
FDEC, 2014 November	2.531	2.530	2.530	2.531	2.531	2.531	2.531	2.531	2.531	2.531	2.530	2.530	2.530	2.530	2.530	2.530	2.529
FDEC, 2015 February	2.530	2.530	2.529	2.530	2.532	2.535	2.539	2.542	2.544	2.544	2.543	2.543	2.543	2.542	2.542	2.541	2.541
Household Size Growth Rate																	
FDEC, 2014 November	-0.07	-0.02	0.01	0.03	0.02	0.00	-0.01	-0.01	-0.01	-0.01	-0.01	-0.02	-0.02	-0.02	-0.03	-0.03	-0.03
FDEC, 2015 February	-0.15	-0.11	-0.03	0.12	0.32	0.49	0.57	0.52	0.33	-0.06	-0.06	-0.06	-0.06	-0.06	-0.07	-0.07	-0.07
Net Migration																	
FDEC, 2014 November	35.5	35.0	36.3	39.5	44.5	49.8	53.8	56.1	57.1	57.6	58.6	59.7	60.8	61.8	62.6	63.2	63.3
FDEC, 2015 February	35.7	35.2	36.4	39.3	44.0	49.2	53.5	57.0	59.5	61.1	61.9	62.2	62.2	62.4	62.5	62.8	63.5
Births																	
FDEC, 2014 November	53.2	53.3	53.4	53.5	53.7	53.9	54.1	54.5	54.7	55.0	55.3	55.5	55.8	56.0	56.3	56.5	56.7
FDEC, 2015 February	53.2	53.3	53.4	53.5	53.7	53.9	54.1	54.5	54.7	55.0	55.3	55.5	55.8	56.0	56.3	56.5	56.7
Deaths																	
FDEC, 2014 November	43.8	44.1	44.3	44.7	44.9	45.1	45.3	45.3	45.5	45.7	45.9	46.3	46.5	46.8	47.0	47.3	47.5
FDEC, 2015 February	43.8	44.1	44.3	44.6	44.9	45.1	45.4	45.5	45.8	46.0	46.3	46.6	46.9	47.1	47.4	47.6	47.9
Net Natural Increase																	
FDEC, 2014 November	9.3	9.2	9.0	8.8	8.8	8.8	8.8	9.2	9.3	9.3	9.4	9.3	9.2	9.2	9.2	9.2	9.2
FDEC, 2015 February	9.3	9.2	9.0	8.9	8.8	8.8	8.8	9.0	9.0	9.0	9.0	8.9	8.9	8.9	8.9	8.9	8.9

Quarterly Data Table

QUARTERLY FORECAST TABLES

	<u>2016-3</u>	<u>2016-4</u>	<u>2017-1</u>	<u>2017-2</u>	<u>2017-3</u>	<u>2017-4</u>	<u>2018-1</u>	<u>2018-2</u>	<u>2018-3</u>	<u>2018-4</u>	<u>2019-1</u>	<u>2019-2</u>	<u>2019-3</u>	<u>2019-4</u>	<u>2020-1</u>	<u>2020-2</u>	<u>2020-3</u>
Population																	
FDEC, 2014 November	20,174.6	20,247.1	20,319.5	20,391.6	20,463.4	20,535.1	20,606.5	20,677.9	20,749.3	20,820.6	20,891.8	20,962.7	21,033.5	21,104.1	21,174.3	21,244.2	21,313.8
FDEC, 2015 February	20,184.7	20,257.9	20,331.0	20,404.0	20,476.9	20,549.7	20,622.4	20,695.0	20,767.6	20,840.0	20,912.4	20,984.5	21,056.8	21,128.9	21,200.8	21,272.3	21,343.4
Population Growth Rate																	
FDEC, 2014 November	1.45	1.44	1.44	1.43	1.42	1.41	1.40	1.39	1.39	1.38	1.37	1.37	1.36	1.35	1.34	1.33	1.32
FDEC, 2015 February	1.46	1.46	1.45	1.44	1.44	1.43	1.42	1.42	1.41	1.40	1.40	1.39	1.39	1.38	1.37	1.36	1.34
Net Change in Population																	
FDEC, 2014 November	72.5	72.5	72.4	72.1	71.8	71.6	71.5	71.4	71.4	71.3	71.2	71.0	70.8	70.5	70.3	69.9	69.6
FDEC, 2015 February	72.8	73.1	73.1	73.0	72.9	72.8	72.7	72.6	72.5	72.5	72.3	72.2	72.3	72.1	71.9	71.5	71.1
Households																	
FDEC, 2014 November	7,976.5	8,005.9	8,035.3	8,064.7	8,094.1	8,123.4	8,152.7	8,182.0	8,211.3	8,240.7	8,269.9	8,299.2	8,328.4	8,357.5	8,386.5	8,415.5	8,444.3
FDEC, 2015 February	7,945.9	7,976.3	8,006.7	8,037.2	8,067.6	8,097.9	8,128.2	8,158.5	8,188.8	8,219.1	8,249.3	8,279.5	8,309.7	8,339.8	8,369.9	8,399.9	8,429.8
Household Growth Rate																	
FDEC, 2014 November	1.49	1.48	1.48	1.47	1.46	1.46	1.45	1.45	1.44	1.44	1.43	1.42	1.41	1.41	1.40	1.39	1.38
FDEC, 2015 February	1.53	1.54	1.53	1.53	1.52	1.51	1.51	1.50	1.49	1.49	1.48	1.47	1.47	1.46	1.45	1.44	1.43
Net Change in Households																	
FDEC, 2014 November	29.4	29.4	29.4	29.4	29.3	29.3	29.3	29.3	29.3	29.3	29.3	29.3	29.2	29.1	29.0	28.9	28.8
FDEC, 2015 February	30.1	30.4	30.4	30.4	30.4	30.4	30.3	30.3	30.3	30.3	30.2	30.2	30.2	30.2	30.1	30.0	29.9
Household Size																	
FDEC, 2014 November	2.529	2.529	2.529	2.528	2.528	2.528	2.528	2.527	2.527	2.527	2.526	2.526	2.526	2.525	2.525	2.524	2.524
FDEC, 2015 February	2.540	2.540	2.539	2.539	2.538	2.538	2.537	2.537	2.536	2.536	2.535	2.535	2.534	2.533	2.533	2.532	2.532
Household Size Growth Rate																	
FDEC, 2014 November	-0.04	-0.04	-0.04	-0.04	-0.05	-0.05	-0.05	-0.05	-0.05	-0.05	-0.05	-0.06	-0.06	-0.06	-0.06	-0.06	-0.06
FDEC, 2015 February	-0.07	-0.08	-0.08	-0.08	-0.08	-0.08	-0.08	-0.08	-0.08	-0.08	-0.08	-0.08	-0.08	-0.08	-0.08	-0.08	-0.09
Net Migration																	
FDEC, 2014 November	63.3	63.3	63.2	63.0	62.7	62.6	62.5	62.5	62.5	62.5	62.5	62.4	62.4	62.3	62.2	62.0	61.9
FDEC, 2015 February	64.0	64.3	64.3	64.2	64.2	64.1	64.0	64.0	64.1	64.1	64.0	64.0	64.3	64.2	64.1	64.0	63.8
Births																	
FDEC, 2014 November	57.0	57.2	57.5	57.7	57.9	58.1	58.4	58.6	58.8	59.1	59.3	59.5	59.7	59.9	60.1	60.3	60.5
FDEC, 2015 February	57.0	57.2	57.5	57.7	57.9	58.1	58.4	58.6	58.8	59.1	59.3	59.5	59.7	59.9	60.1	60.3	60.5
Deaths																	
FDEC, 2014 November	47.8	48.0	48.3	48.5	48.8	49.1	49.4	49.7	50.0	50.3	50.6	51.0	51.3	51.7	52.0	52.4	52.8
FDEC, 2015 February	48.1	48.4	48.6	48.9	49.2	49.4	49.7	50.0	50.3	50.7	51.0	51.3	51.7	52.0	52.4	52.8	53.2
Net Natural Increase																	
FDEC, 2014 November	9.2	9.2	9.2	9.1	9.1	9.1	9.0	8.9	8.9	8.8	8.7	8.5	8.4	8.3	8.1	7.9	7.7
FDEC, 2015 February	8.8	8.8	8.8	8.8	8.8	8.7	8.7	8.6	8.5	8.4	8.3	8.2	8.0	7.9	7.7	7.5	7.3

Quarterly Data Table

QUARTERLY FORECAST TABLES

	<u>2020-4</u>	<u>2021-1</u>	<u>2021-2</u>	<u>2021-3</u>	<u>2021-4</u>	<u>2022-1</u>	<u>2022-2</u>	<u>2022-3</u>	<u>2022-4</u>	<u>2023-1</u>	<u>2023-2</u>	<u>2023-3</u>	<u>2023-4</u>	<u>2024-1</u>	<u>2024-2</u>
Population															
FDEC, 2014 November	21,383.1	21,452.0	21,520.6	21,588.9	21,656.9	21,724.6	21,792.0	21,859.2	21,926.1	21,992.8	22,059.2	22,125.4	22,191.4	22,257.2	22,322.8
FDEC, 2015 February	21,414.0	21,484.3	21,554.3	21,623.8	21,693.1	21,761.9	21,830.5	21,898.8	21,966.7	22,034.4	22,101.8	22,169.0	22,235.9	22,302.6	22,369.1
Population Growth Rate															
FDEC, 2014 November	1.31	1.30	1.29	1.28	1.27	1.26	1.25	1.24	1.23	1.22	1.21	1.21	1.20	1.19	1.18
FDEC, 2015 February	1.33	1.32	1.31	1.30	1.29	1.28	1.27	1.26	1.25	1.24	1.23	1.22	1.21	1.21	1.20
Net Change in Population															
FDEC, 2014 November	69.2	68.9	68.6	68.3	68.0	67.7	67.4	67.2	66.9	66.7	66.4	66.2	66.0	65.8	65.6
FDEC, 2015 February	70.7	70.3	69.9	69.6	69.2	68.9	68.6	68.3	68.0	67.7	67.4	67.2	66.9	66.7	66.5
Households															
FDEC, 2014 November	8,472.9	8,501.5	8,529.9	8,558.3	8,586.5	8,614.6	8,642.6	8,670.5	8,698.4	8,726.1	8,753.8	8,781.4	8,808.9	8,836.3	8,863.6
FDEC, 2015 February	8,459.6	8,489.2	8,518.8	8,548.3	8,577.6	8,606.9	8,636.0	8,665.1	8,694.0	8,723.0	8,751.8	8,780.6	8,809.3	8,837.9	8,866.3
Household Growth Rate															
FDEC, 2014 November	1.37	1.35	1.34	1.34	1.33	1.32	1.31	1.30	1.29	1.28	1.27	1.27	1.26	1.25	1.24
FDEC, 2015 February	1.42	1.41	1.40	1.39	1.38	1.37	1.36	1.35	1.34	1.34	1.33	1.32	1.31	1.30	1.29
Net Change in Households															
FDEC, 2014 November	28.7	28.6	28.4	28.3	28.2	28.1	28.0	27.9	27.8	27.7	27.7	27.6	27.5	27.4	27.4
FDEC, 2015 February	29.8	29.7	29.6	29.5	29.4	29.2	29.1	29.1	29.0	28.9	28.9	28.8	28.7	28.6	28.4
Household Size															
FDEC, 2014 November	2.524	2.523	2.523	2.523	2.522	2.522	2.521	2.521	2.521	2.520	2.520	2.520	2.519	2.519	2.518
FDEC, 2015 February	2.531	2.531	2.530	2.530	2.529	2.528	2.528	2.527	2.527	2.526	2.525	2.525	2.524	2.524	2.523
Household Size Growth Rate															
FDEC, 2014 November	-0.06	-0.06	-0.06	-0.06	-0.06	-0.06	-0.06	-0.06	-0.06	-0.06	-0.06	-0.06	-0.06	-0.06	-0.06
FDEC, 2015 February	-0.09	-0.09	-0.09	-0.09	-0.09	-0.09	-0.09	-0.09	-0.10	-0.10	-0.10	-0.10	-0.10	-0.10	-0.09
Net Migration															
FDEC, 2014 November	61.8	61.7	61.7	61.7	61.7	61.7	61.8	61.9	62.0	62.1	62.3	62.4	62.6	62.9	63.1
FDEC, 2015 February	63.6	63.5	63.4	63.3	63.3	63.3	63.3	63.4	63.4	63.5	63.7	63.8	64.0	64.2	64.4
Births															
FDEC, 2014 November	60.7	60.9	61.1	61.3	61.4	61.6	61.8	61.9	62.1	62.2	62.4	62.5	62.7	62.8	63.0
FDEC, 2015 February	60.7	60.9	61.1	61.3	61.4	61.6	61.8	61.9	62.1	62.2	62.4	62.5	62.7	62.8	63.0
Deaths															
FDEC, 2014 November	53.2	53.7	54.1	54.6	55.1	55.6	56.1	56.6	57.1	57.7	58.2	58.7	59.3	59.9	60.5
FDEC, 2015 February	53.6	54.1	54.5	55.0	55.5	56.0	56.5	57.0	57.6	58.1	58.6	59.2	59.7	60.4	60.9
Net Natural Increase															
FDEC, 2014 November	7.5	7.2	6.9	6.6	6.3	6.0	5.6	5.3	4.9	4.6	4.2	3.8	3.4	2.9	2.5
FDEC, 2015 February	7.1	6.8	6.5	6.3	5.9	5.6	5.2	4.9	4.5	4.1	3.7	3.4	3.0	2.5	2.1

FISCAL YEAR
FORECAST TABLES

Fiscal Year Data Table

	<u>1990-91</u>	<u>1991-92</u>	<u>1992-93</u>	<u>1993-94</u>	<u>1994-95</u>	<u>1995-96</u>	<u>1996-97</u>	<u>1997-98</u>	<u>1998-99</u>	<u>1999-00</u>	<u>2000-01</u>	<u>2001-02</u>	<u>2002-03</u>	<u>2003-04</u>	<u>2004-05</u>
Population															
FDEC, 2014 November	13,178.0	13,442.6	13,670.0	13,962.2	14,264.9	14,550.7	14,859.1	15,158.3	15,488.4	15,881.7	16,228.0	16,551.2	16,892.0	17,273.8	17,677.3
FDEC, 2015 February	13,178.0	13,442.6	13,670.0	13,962.2	14,264.9	14,550.7	14,859.1	15,158.3	15,488.4	15,881.7	16,228.0	16,551.2	16,892.0	17,273.8	17,677.3
Growth Rate															
FDEC, 2014 November	2.42	2.01	1.69	2.14	2.17	2.00	2.12	2.01	2.18	2.54	2.18	1.99	2.06	2.26	2.34
FDEC, 2015 February	2.42	2.01	1.69	2.14	2.17	2.00	2.12	2.01	2.18	2.54	2.18	1.99	2.06	2.26	2.34
Net Change in Population															
FDEC, 2014 November	311.4	264.6	227.4	292.2	302.8	285.8	308.4	299.2	330.1	393.2	346.4	323.2	340.9	381.8	403.5
FDEC, 2015 February	311.4	264.6	227.4	292.2	302.8	285.8	308.4	299.2	330.1	393.2	346.4	323.2	340.9	381.8	403.5
Households															
FDEC, 2014 November	5,230.7	5,335.4	5,424.2	5,538.0	5,655.6	5,766.7	5,887.3	6,005.5	6,137.4	6,296.9	6,436.4	6,565.8	6,702.3	6,855.1	7,016.4
FDEC, 2015 February	5,230.7	5,335.4	5,424.2	5,538.0	5,655.6	5,766.7	5,887.3	6,005.5	6,137.4	6,296.9	6,436.4	6,565.8	6,702.3	6,855.1	7,016.4
Growth Rate															
FDEC, 2014 November	2.44	2.00	1.66	2.10	2.12	1.96	2.09	2.01	2.20	2.60	2.22	2.01	2.08	2.28	2.35
FDEC, 2015 February	2.44	2.00	1.66	2.10	2.12	1.96	2.09	2.01	2.20	2.60	2.22	2.01	2.08	2.28	2.35
Net Change in Households															
FDEC, 2014 November	124.7	104.7	88.8	113.8	117.7	111.1	120.6	118.1	132.0	159.5	139.5	129.3	136.5	152.8	161.3
FDEC, 2015 February	124.7	104.7	88.8	113.8	117.7	111.1	120.6	118.1	132.0	159.5	139.5	129.3	136.5	152.8	161.3
Household Size															
FDEC, 2014 November	2.519	2.520	2.520	2.521	2.522	2.523	2.524	2.524	2.524	2.522	2.521	2.521	2.520	2.520	2.519
FDEC, 2015 February	2.519	2.520	2.520	2.521	2.522	2.523	2.524	2.524	2.524	2.522	2.521	2.521	2.520	2.520	2.519
Growth Rate															
FDEC, 2014 November	-0.02	0.01	0.03	0.04	0.04	0.04	0.03	0.01	-0.02	-0.06	-0.03	-0.02	-0.02	-0.02	-0.02
FDEC, 2015 February	-0.02	0.01	0.03	0.04	0.04	0.04	0.03	0.01	-0.02	-0.06	-0.03	-0.02	-0.02	-0.02	-0.02
Net Migration															
FDEC, 2014 November	248.4	208.9	177.4	246.6	262.7	249.6	270.9	260.5	293.9	355.3	306.0	285.5	300.4	335.0	351.1
FDEC, 2015 February	248.4	208.9	177.4	246.6	262.7	249.6	270.9	260.5	293.9	355.3	306.0	285.5	300.4	335.0	351.1
Births															
FDEC, 2014 November	197.0	192.2	192.0	191.7	189.4	188.6	190.7	194.0	196.0	200.5	205.4	205.4	208.5	215.0	221.8
FDEC, 2015 February	197.0	192.2	192.0	191.7	189.4	188.6	190.7	194.0	196.0	200.5	205.4	205.4	208.5	215.0	221.8
Deaths															
FDEC, 2014 November	134.0	136.5	142.0	146.1	149.3	152.4	153.1	155.3	159.8	162.5	165.0	167.7	168.1	168.3	169.4
FDEC, 2015 February	134.0	136.5	142.0	146.1	149.3	152.4	153.1	155.3	159.8	162.5	165.0	167.7	168.1	168.3	169.4
Net Natural Increase															
FDEC, 2014 November	63.0	55.7	50.0	45.6	40.1	36.2	37.5	38.8	36.2	38.0	40.3	37.7	40.4	46.7	52.4
FDEC, 2015 February	63.0	55.7	50.0	45.6	40.1	36.2	37.5	38.8	36.2	38.0	40.3	37.7	40.4	46.7	52.4

FISCAL YEAR
FORECAST TABLES

Fiscal Year Data Table

	<u>2005-06</u>	<u>2006-07</u>	<u>2007-08</u>	<u>2008-09</u>	<u>2009-10</u>	<u>2010-11</u>	<u>2011-12</u>	<u>2012-13</u>	<u>2013-14</u>	<u>2014-15</u>	<u>2015-16</u>	<u>2016-17</u>	<u>2017-18</u>	<u>2018-19</u>
Population														
FDEC, 2014 November	18,062.2	18,378.2	18,578.9	18,671.4	18,770.4	18,878.8	19,029.4	19,212.2	19,442.5	19,710.5	19,993.6	20,283.2	20,570.7	20,856.1
FDEC, 2015 February	18,062.2	18,378.2	18,578.9	18,671.4	18,770.4	18,878.8	19,029.3	19,212.4	19,442.1	19,718.6	20,003.9	20,294.4	20,586.0	20,876.1
Growth Rate														
FDEC, 2014 November	2.18	1.75	1.09	0.50	0.53	0.58	0.80	0.96	1.20	1.38	1.44	1.45	1.42	1.39
FDEC, 2015 February	2.18	1.75	1.09	0.50	0.53	0.58	0.80	0.96	1.20	1.42	1.45	1.45	1.44	1.41
Net Change in Population														
FDEC, 2014 November	384.9	316.0	200.7	92.5	99.0	108.4	150.6	182.8	230.3	268.0	283.2	289.6	287.5	285.4
FDEC, 2015 February	384.9	316.0	200.7	92.5	99.0	108.4	150.5	183.0	229.7	276.5	285.3	290.5	291.6	290.1
Households														
FDEC, 2014 November	7,170.9	7,288.9	7,357.1	7,383.0	7,411.4	7,450.8	7,517.4	7,592.0	7,682.6	7,789.6	7,903.3	8,020.6	8,138.1	8,255.3
FDEC, 2015 February	7,170.9	7,288.9	7,357.1	7,383.0	7,411.4	7,451.0	7,516.9	7,593.1	7,654.3	7,753.6	7,871.1	7,991.5	8,113.0	8,234.2
Growth Rate														
FDEC, 2014 November	2.20	1.65	0.93	0.35	0.38	0.53	0.89	0.99	1.19	1.39	1.46	1.48	1.46	1.44
FDEC, 2015 February	2.20	1.65	0.93	0.35	0.38	0.53	0.88	1.01	0.81	1.30	1.52	1.53	1.52	1.49
Net Change in Households														
FDEC, 2014 November	154.5	118.1	68.1	26.0	28.3	39.5	66.6	74.6	90.6	107.0	113.7	117.3	117.5	117.2
FDEC, 2015 February	154.5	118.1	68.1	26.0	28.3	39.6	65.9	76.2	61.3	99.3	117.5	120.4	121.5	121.1
Household Size														
FDEC, 2014 November	2.519	2.521	2.525	2.529	2.533	2.534	2.531	2.531	2.531	2.530	2.530	2.529	2.528	2.526
FDEC, 2015 February	2.519	2.521	2.525	2.529	2.533	2.534	2.532	2.530	2.540	2.543	2.541	2.539	2.537	2.535
Growth Rate														
FDEC, 2014 November	-0.02	0.10	0.16	0.14	0.15	0.04	-0.09	-0.03	0.00	-0.01	-0.02	-0.04	-0.05	-0.05
FDEC, 2015 February	-0.02	0.10	0.16	0.14	0.15	0.04	-0.09	-0.05	0.39	0.12	-0.07	-0.08	-0.08	-0.08
Net Migration														
FDEC, 2014 November	322.9	245.0	133.7	36.3	52.7	67.6	111.9	147.0	194.2	230.8	246.3	252.9	251.4	250.5
FDEC, 2015 February	322.9	245.0	133.7	36.3	52.7	67.6	111.8	147.1	194.3	240.7	249.8	255.2	257.0	256.7
Births														
FDEC, 2014 November	232.1	239.3	236.0	226.4	217.4	213.5	212.9	213.8	217.2	221.6	225.5	229.3	233.1	236.7
FDEC, 2015 February	232.1	239.3	236.0	226.4	217.4	213.5	212.9	213.8	217.2	221.6	225.5	229.3	233.1	236.7
Deaths														
FDEC, 2014 November	170.1	168.3	169.0	170.2	171.1	172.7	174.1	178.0	181.2	184.4	188.6	192.6	197.0	201.8
FDEC, 2015 February	170.1	168.3	169.0	170.2	171.1	172.7	174.1	177.9	181.8	185.7	190.0	194.0	198.4	203.3
Net Natural Increase														
FDEC, 2014 November	62.0	71.0	67.0	56.2	46.3	40.8	38.8	35.8	36.1	37.2	36.9	36.7	36.1	34.8
FDEC, 2015 February	62.0	71.0	67.0	56.2	46.3	40.8	38.8	35.9	35.5	35.8	35.5	35.3	34.7	33.4

FISCAL YEAR
FORECAST TABLES

Fiscal Year Data Table

	<u>2019-20</u>	<u>2020-21</u>	<u>2021-22</u>	<u>2022-23</u>	<u>2023-24</u>
Population					
FDEC, 2014 November	21,139.0	21,417.4	21,690.6	21,959.3	22,224.2
FDEC, 2015 February	21,164.7	21,449.0	21,727.3	22,000.4	22,269.2
Growth Rate					
FDEC, 2014 November	1.36	1.32	1.28	1.24	1.21
FDEC, 2015 February	1.38	1.34	1.30	1.26	1.22
Net Change in Population					
FDEC, 2014 November	282.9	278.3	273.2	268.7	264.9
FDEC, 2015 February	288.6	284.3	278.3	273.1	268.7
Households					
FDEC, 2014 November	8,372.0	8,487.1	8,600.5	8,712.2	8,822.5
FDEC, 2015 February	8,354.8	8,474.4	8,592.2	8,708.5	8,823.6
Growth Rate					
FDEC, 2014 November	1.41	1.38	1.34	1.30	1.27
FDEC, 2015 February	1.47	1.43	1.39	1.35	1.32
Net Change in Households					
FDEC, 2014 November	116.7	115.2	113.3	111.7	110.3
FDEC, 2015 February	120.7	119.5	117.8	116.3	115.1
Household Size					
FDEC, 2014 November	2.525	2.524	2.522	2.521	2.519
FDEC, 2015 February	2.533	2.531	2.529	2.526	2.524
Growth Rate					
FDEC, 2014 November	-0.06	-0.06	-0.06	-0.06	-0.06
FDEC, 2015 February	-0.08	-0.09	-0.09	-0.10	-0.10
Net Migration					
FDEC, 2014 November	250.3	249.0	248.6	249.8	252.3
FDEC, 2015 February	257.4	256.5	255.3	255.8	257.9
Births					
FDEC, 2014 November	240.1	243.2	246.0	248.6	251.0
FDEC, 2015 February	240.1	243.2	246.0	248.6	251.0
Deaths					
FDEC, 2014 November	207.4	213.9	221.4	229.6	238.4
FDEC, 2015 February	208.9	215.5	223.0	231.3	240.2
Net Natural Increase					
FDEC, 2014 November	32.7	29.3	24.6	18.9	12.6
FDEC, 2015 February	31.2	27.8	23.0	17.3	10.8

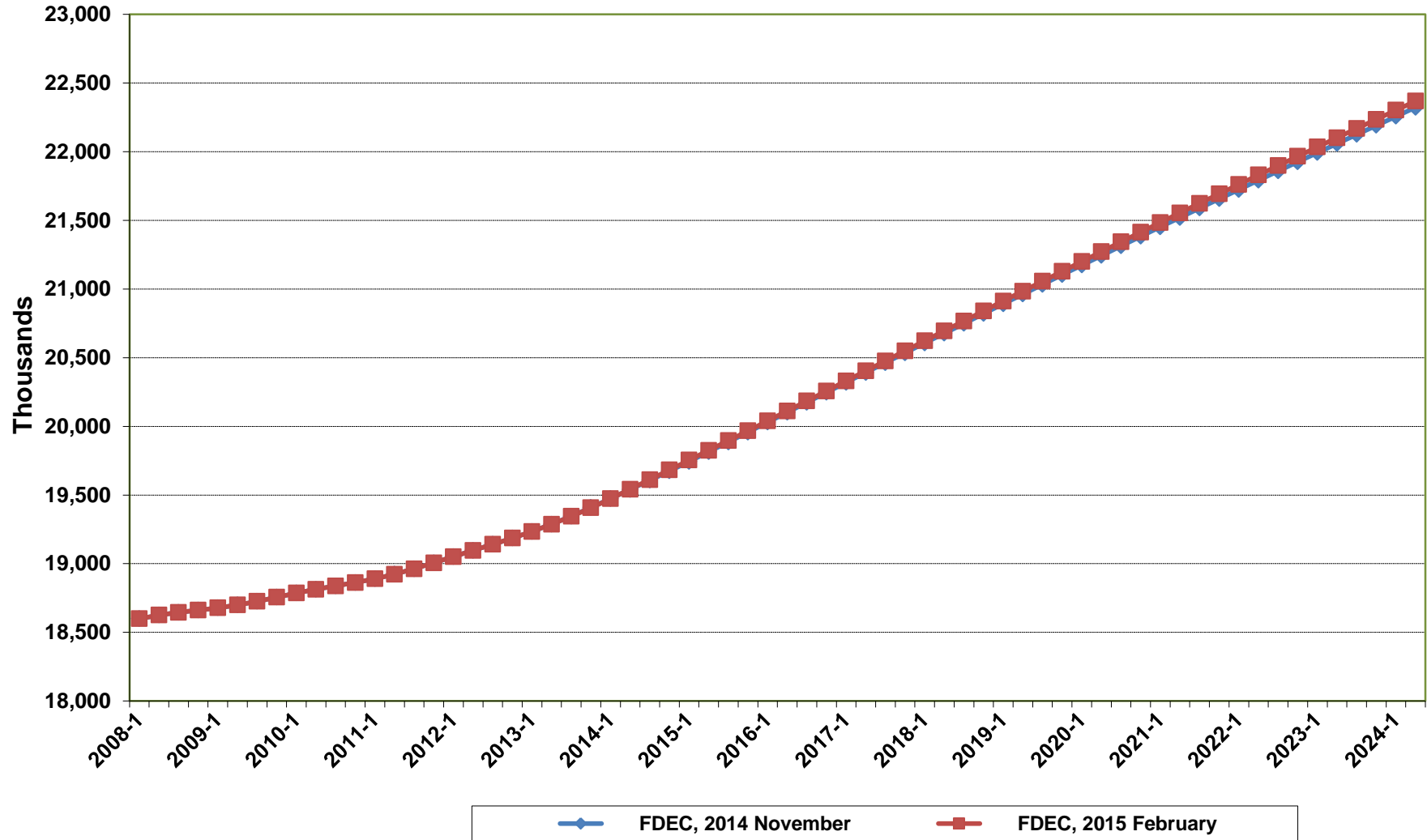
Florida Demographic Estimating Conference

Charts

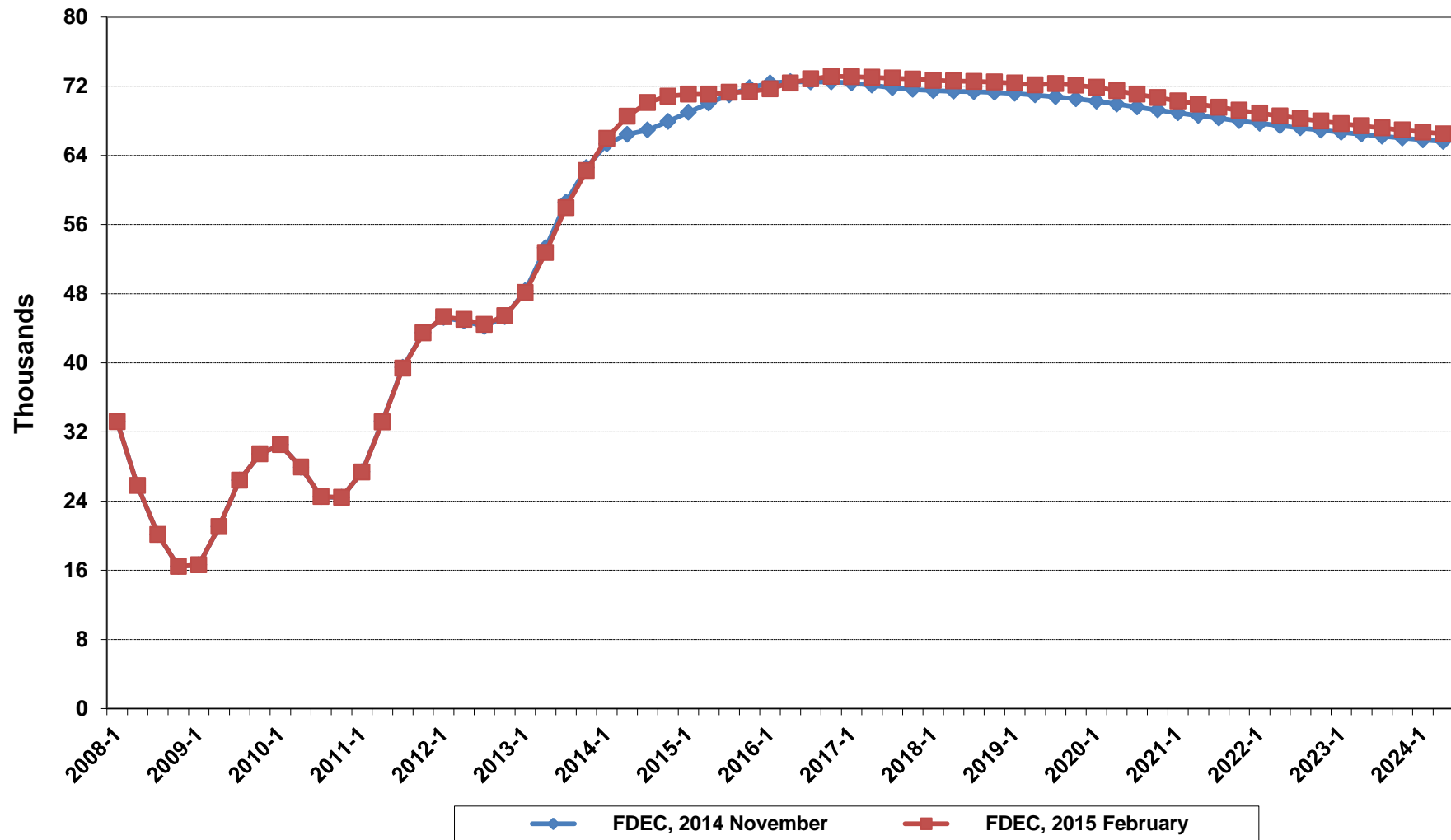
Conference Packet

February 11, 2015

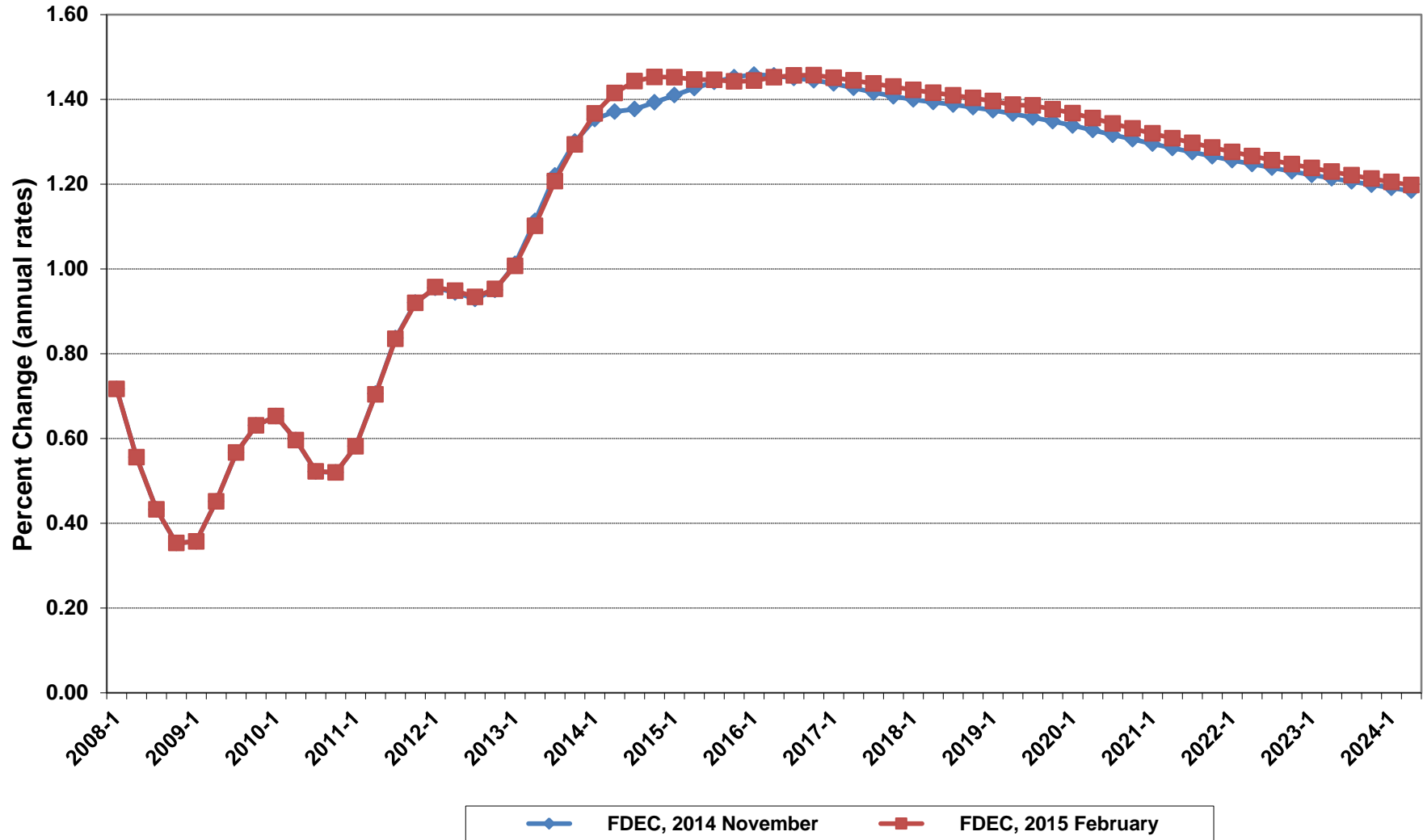
Florida Resident Population



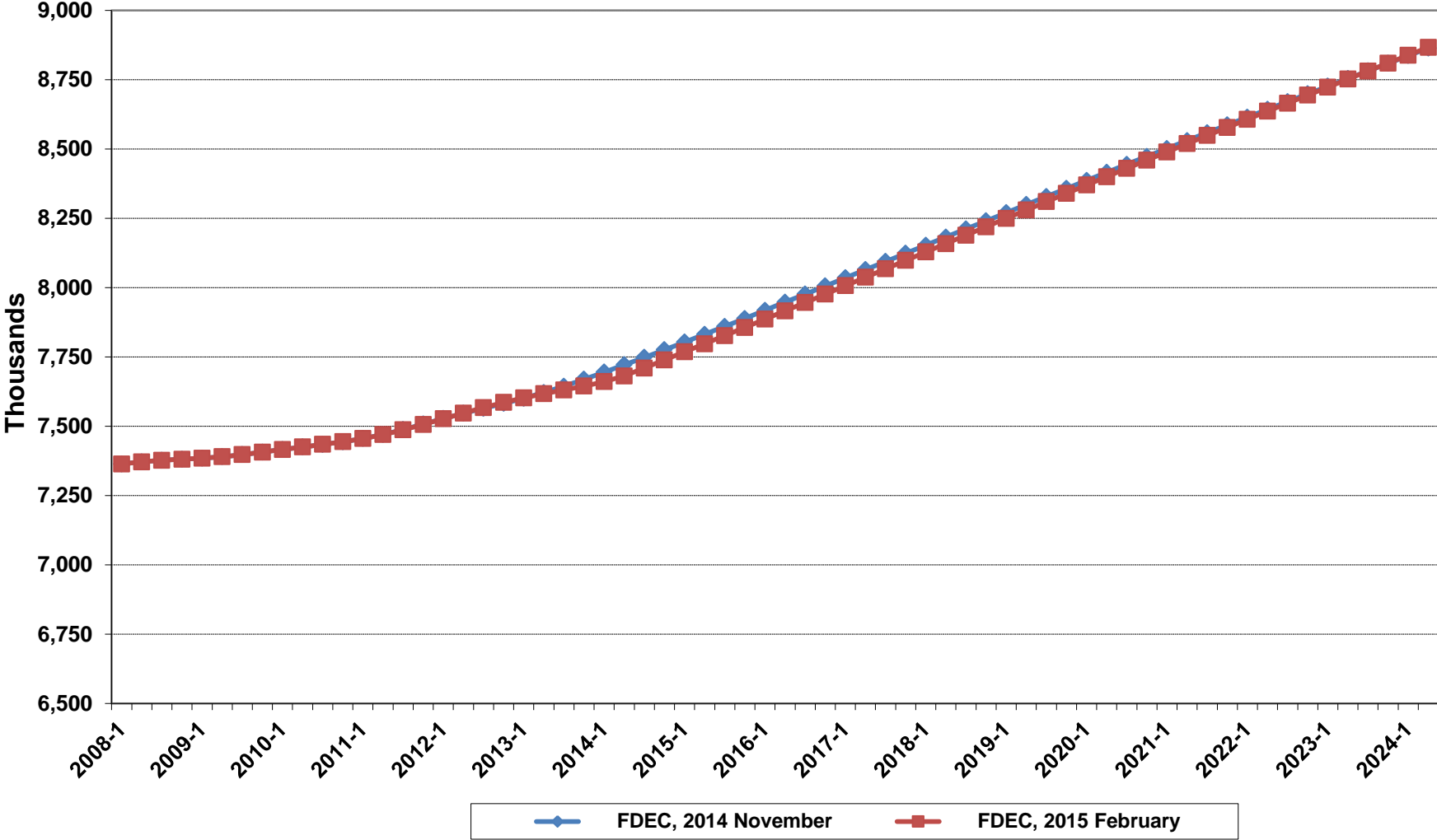
Net Change In Florida Resident Population



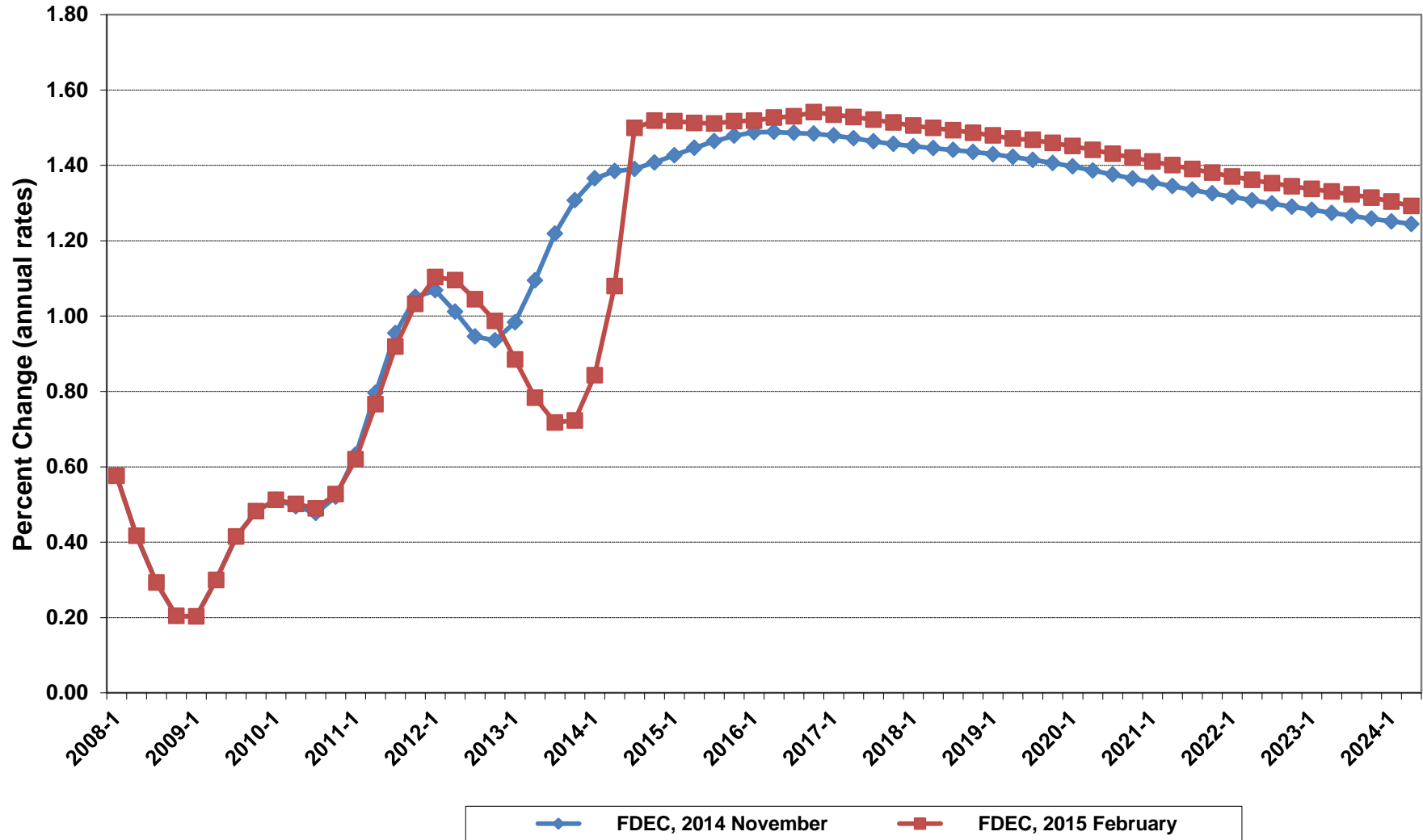
Growth In Florida Resident Population



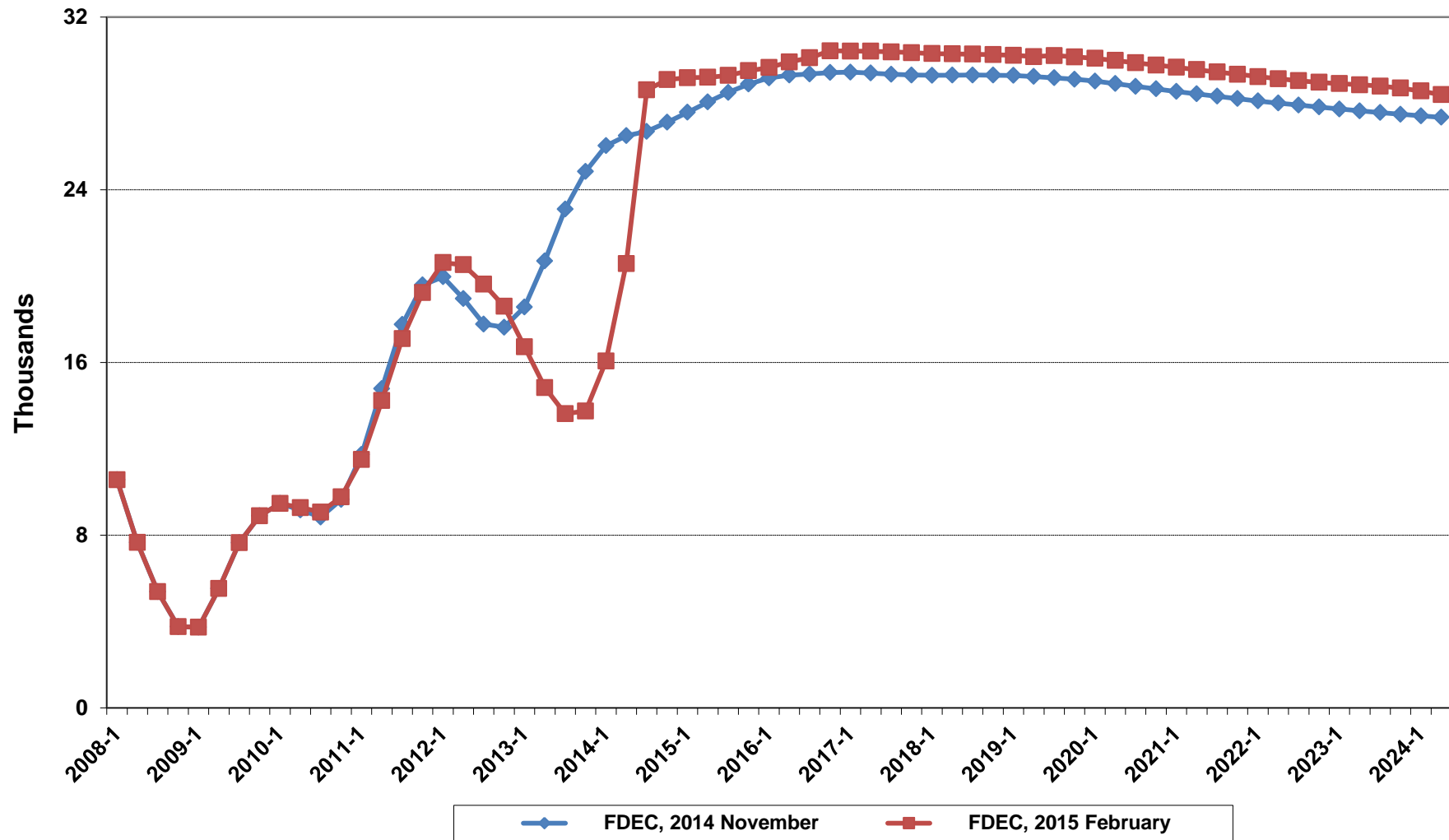
Florida Resident Households



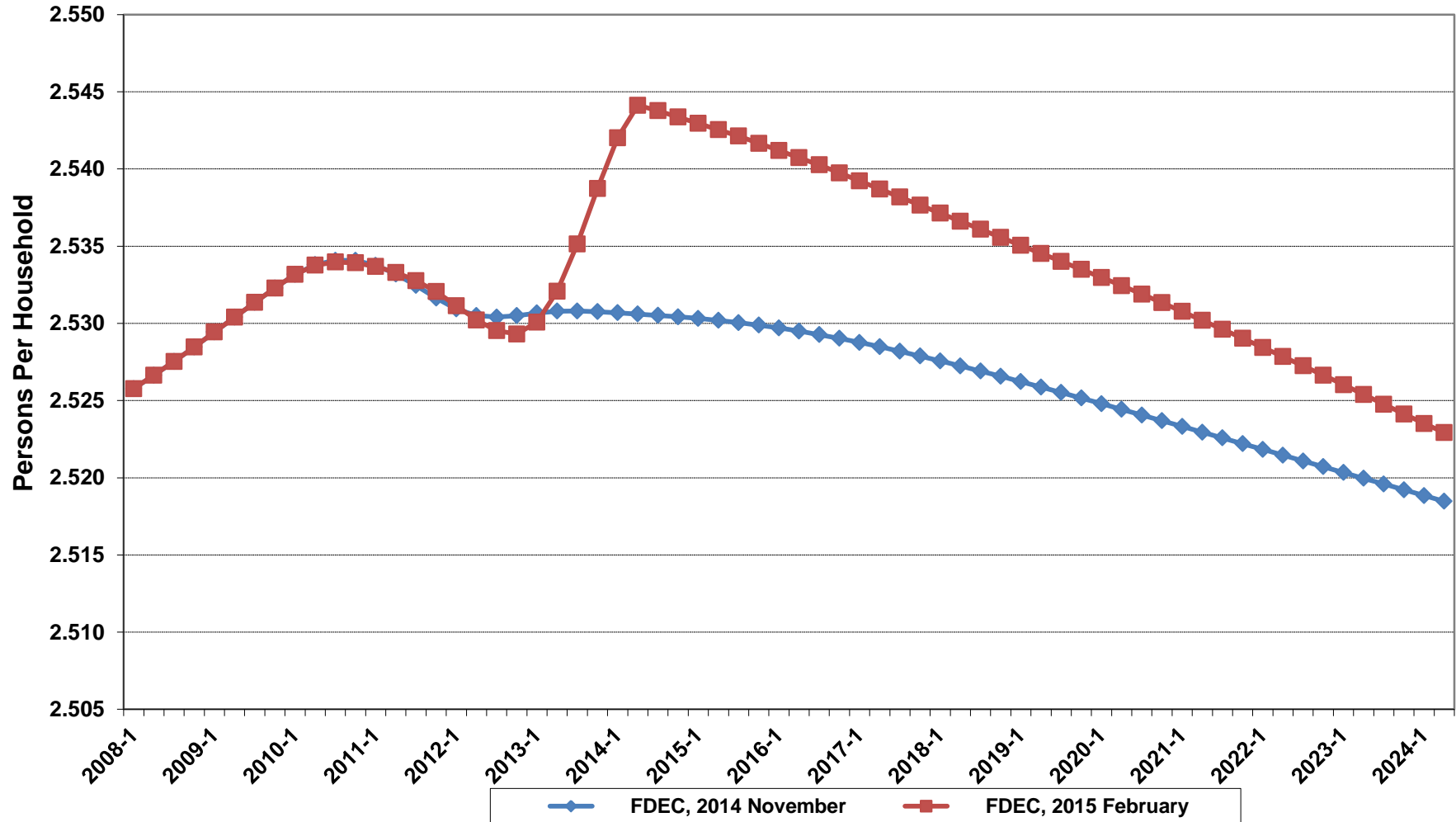
Growth In Florida Resident Households



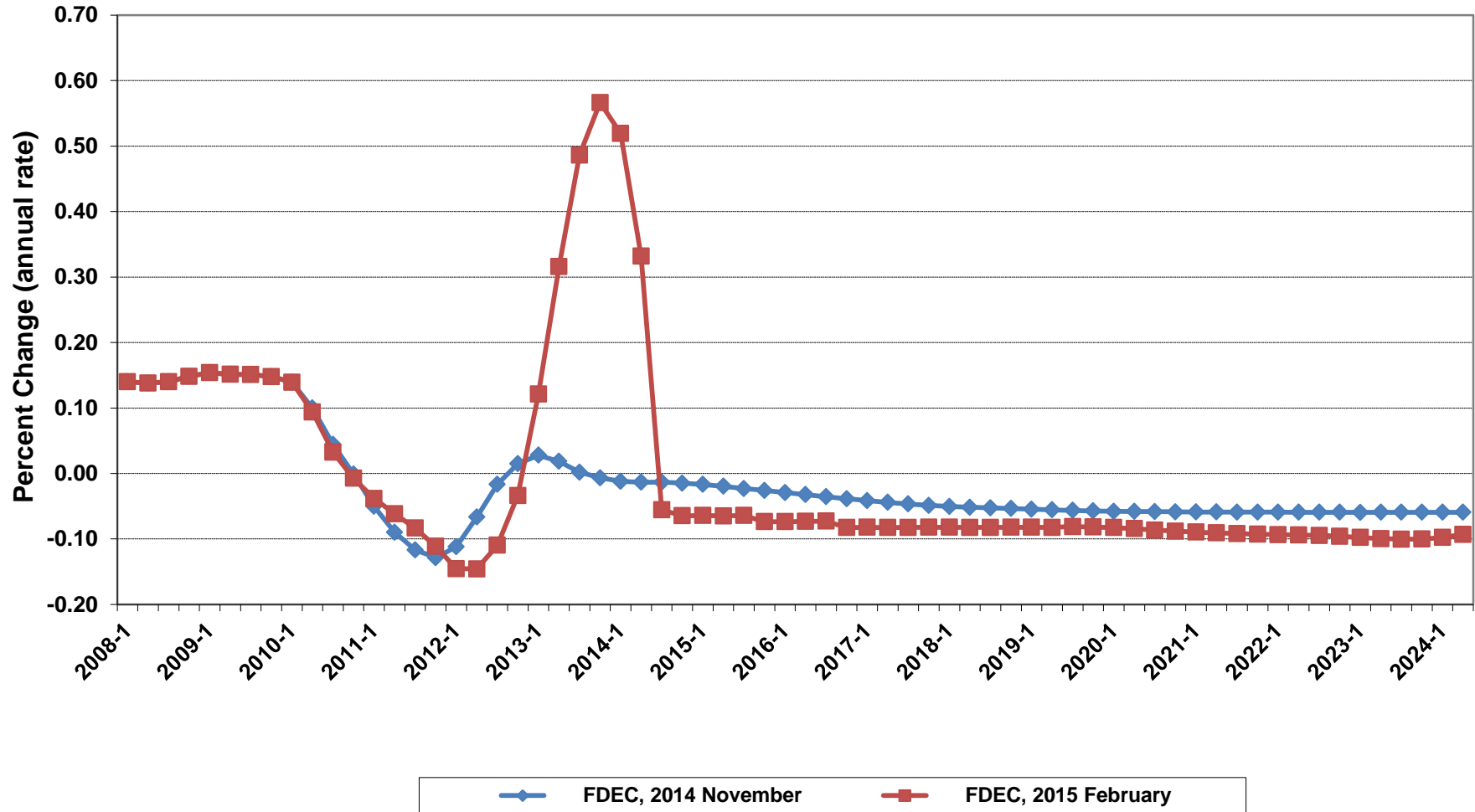
Net Change In Florida Resident Households



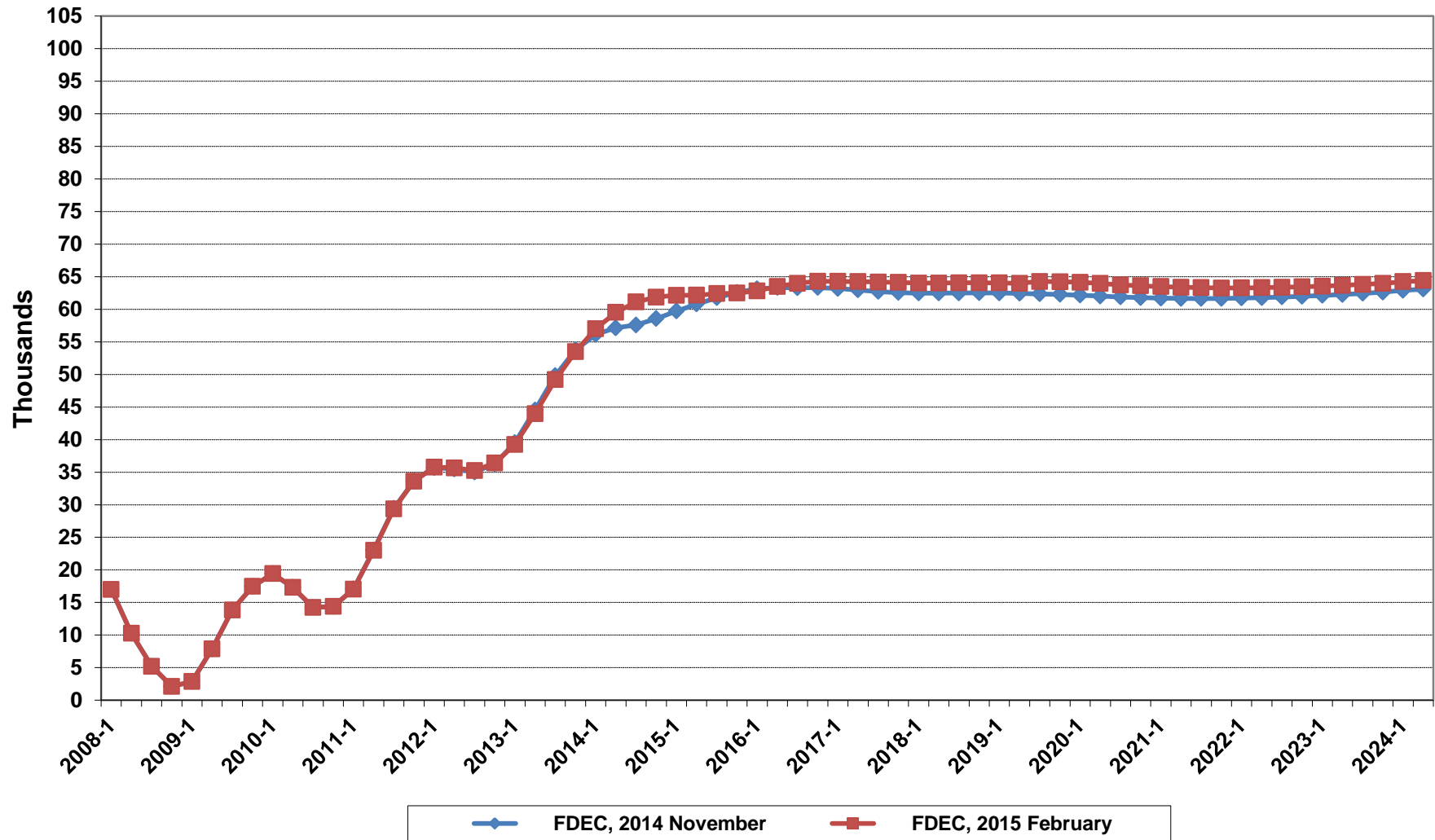
Florida Average Household Size



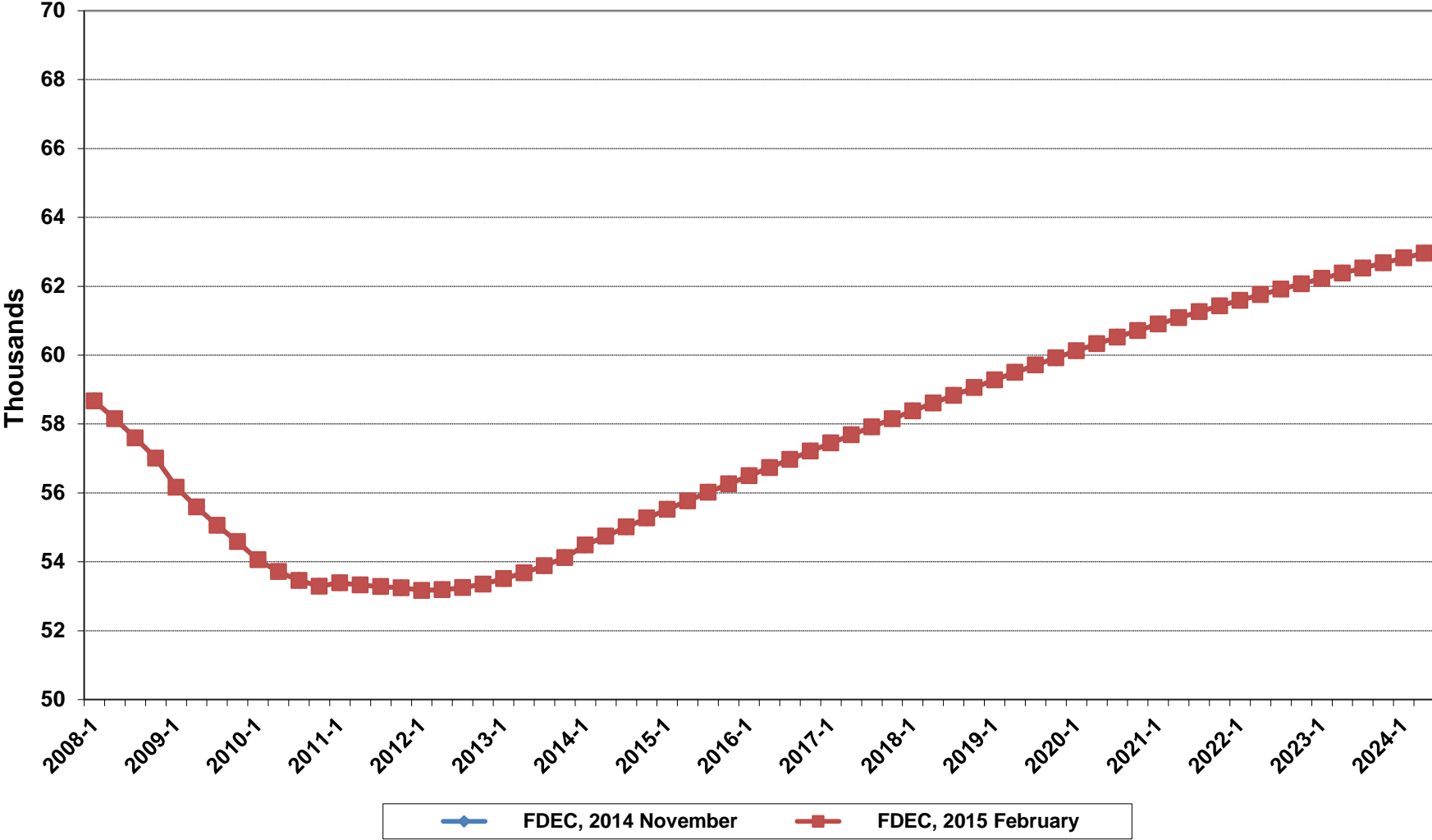
Growth In Florida Household Size



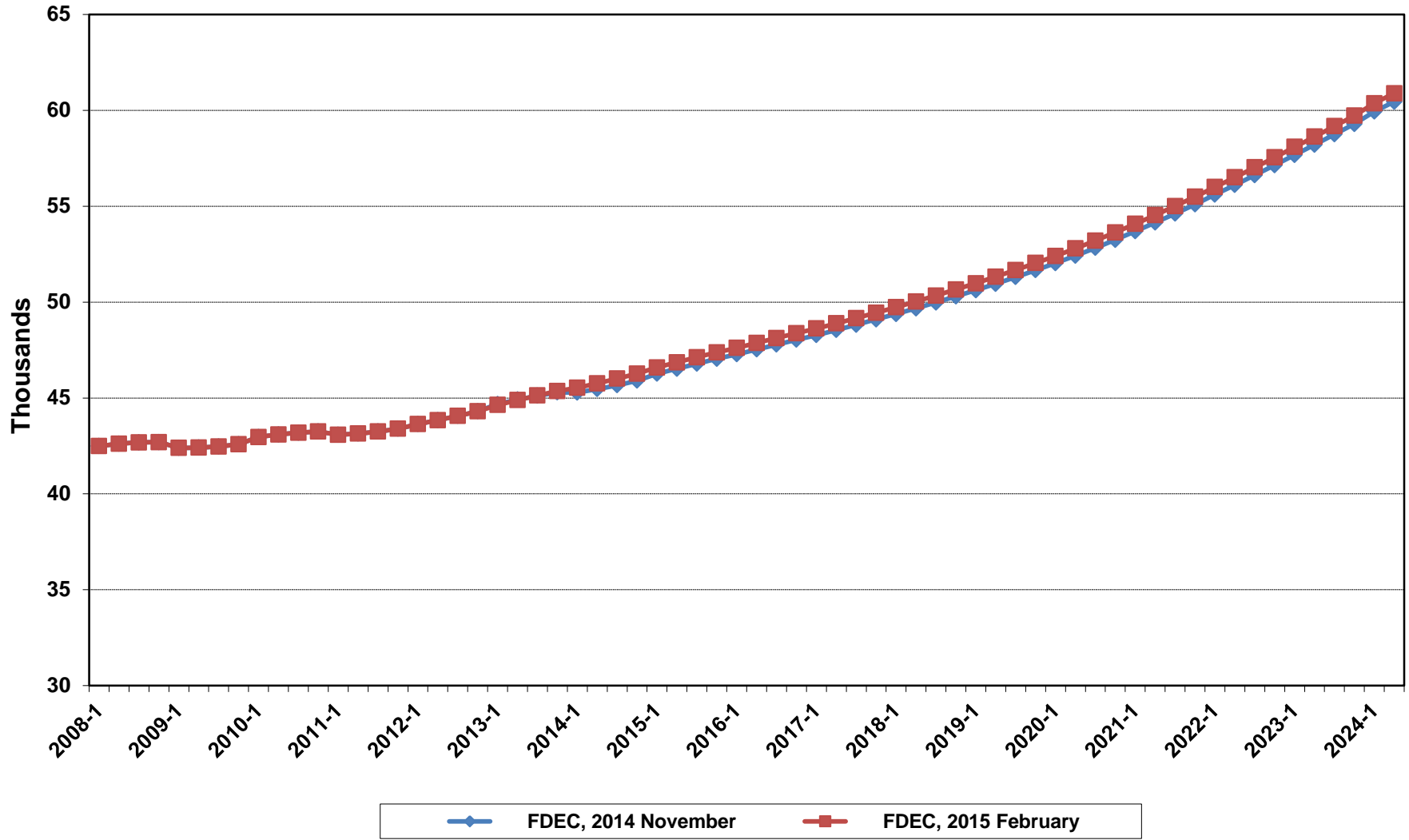
Florida Net Migration



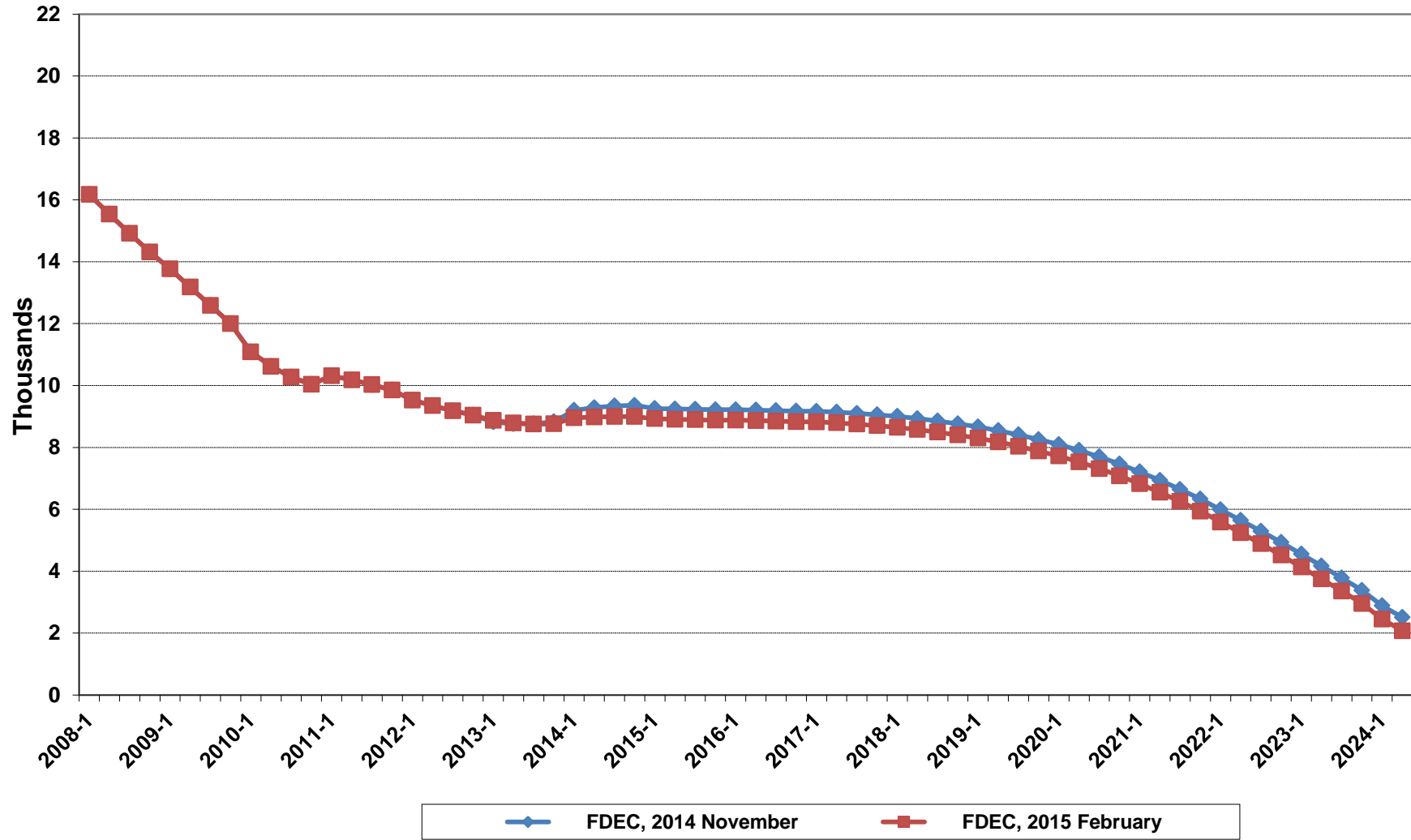
Florida Resident Births



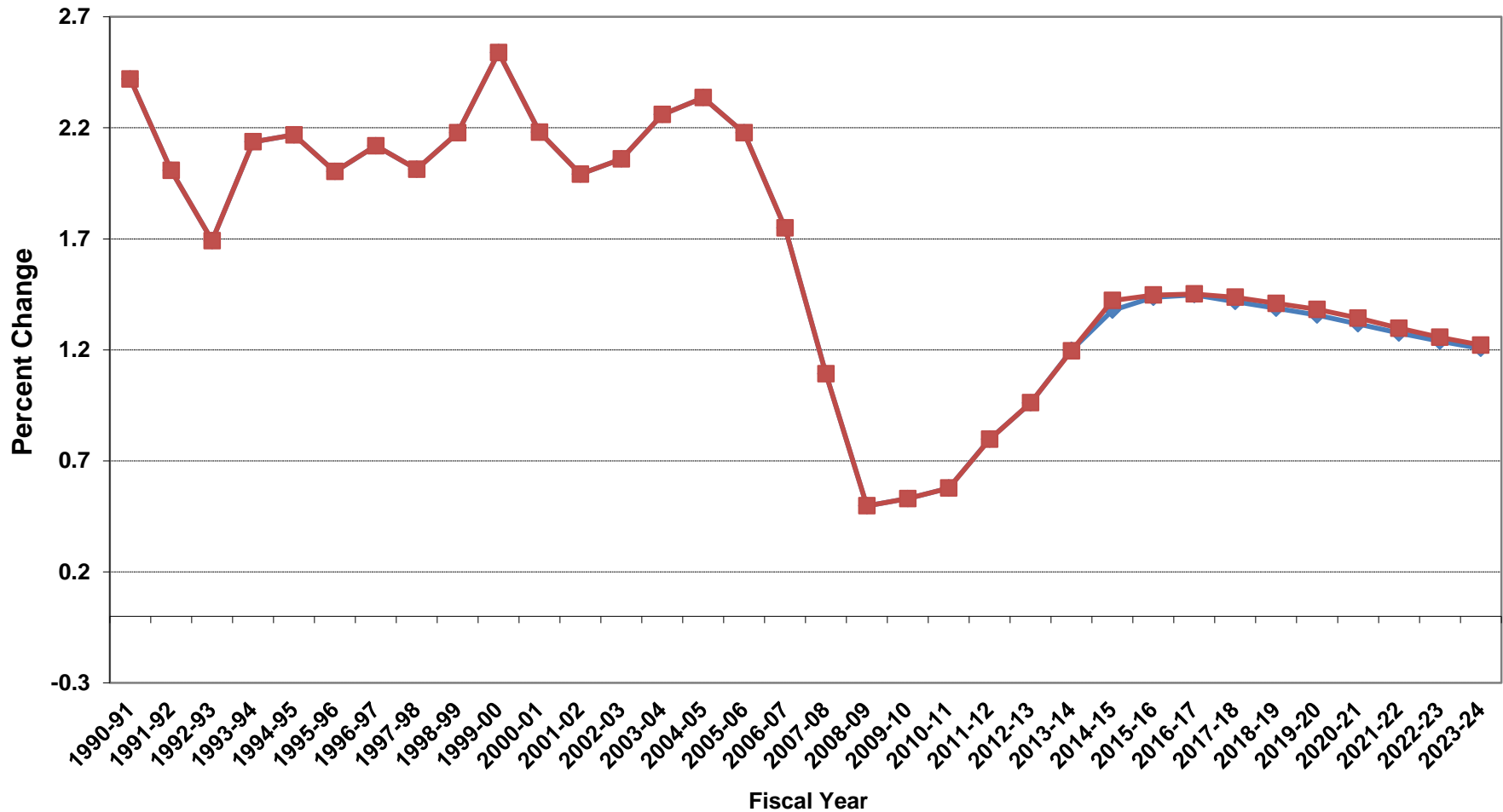
Florida Resident Deaths



Florida Net Natural Increase

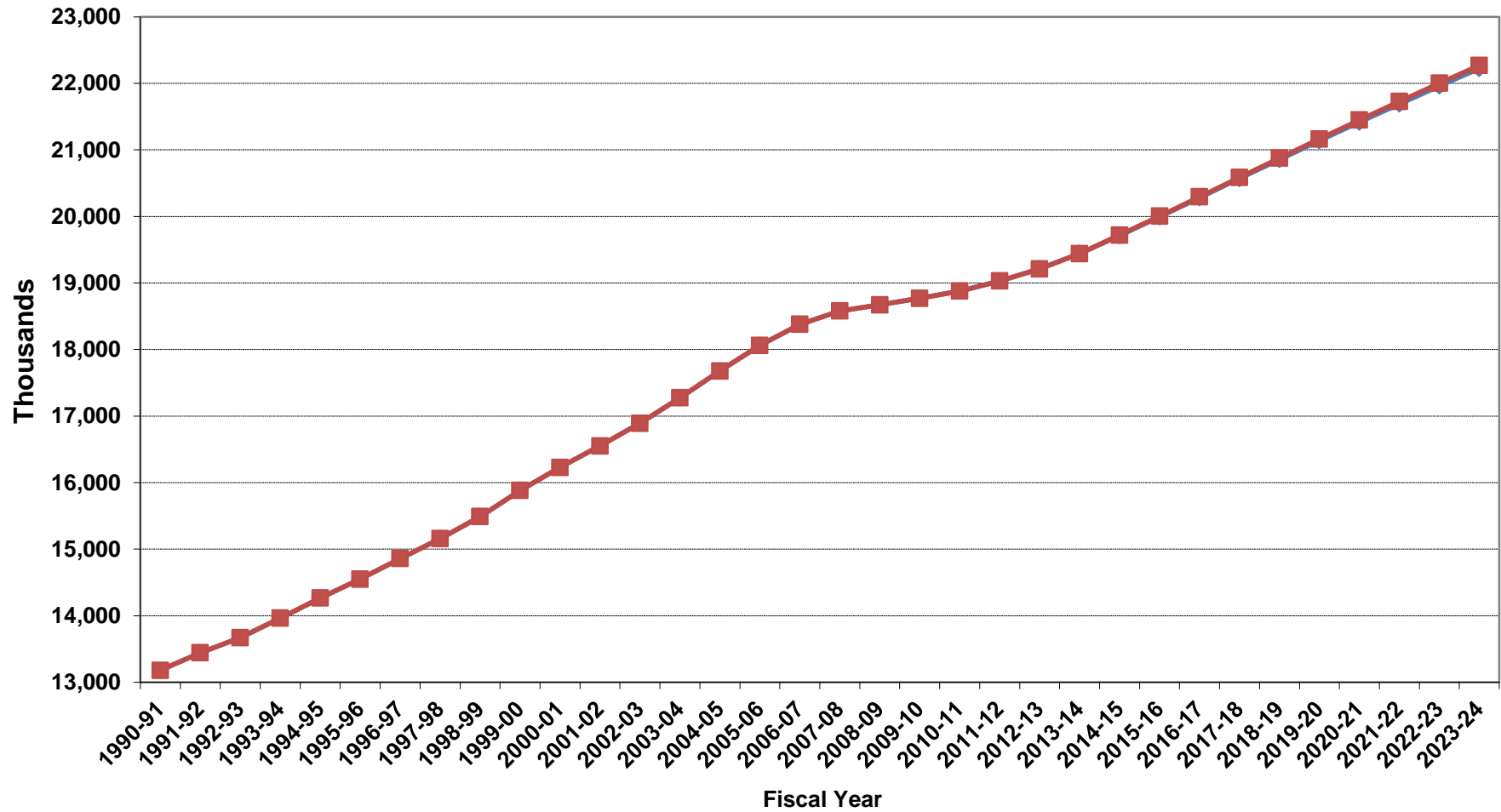


Growth In Florida Resident Population



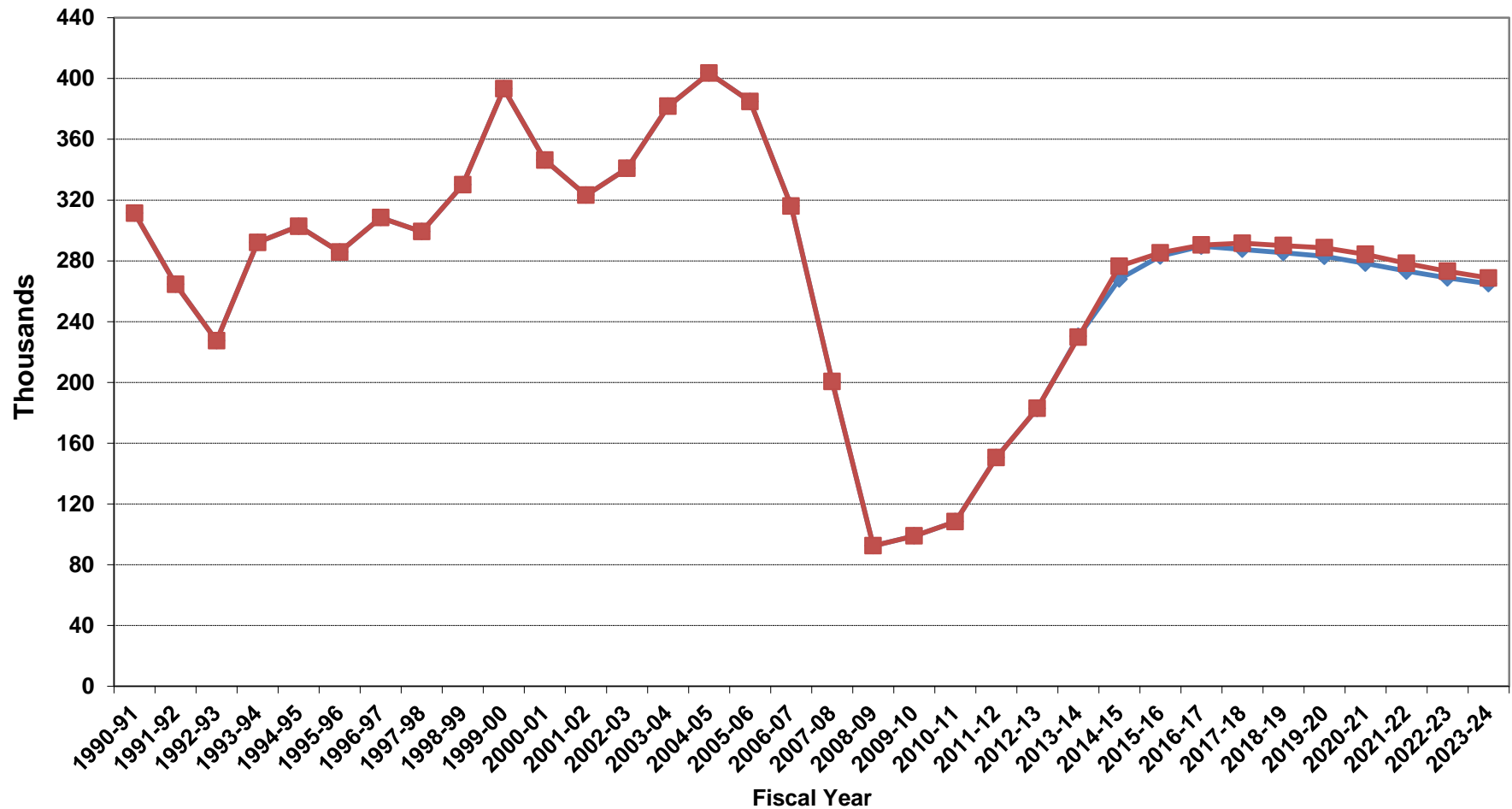
FDEC, 2014 November FDEC, 2015 February

Florida Resident Population



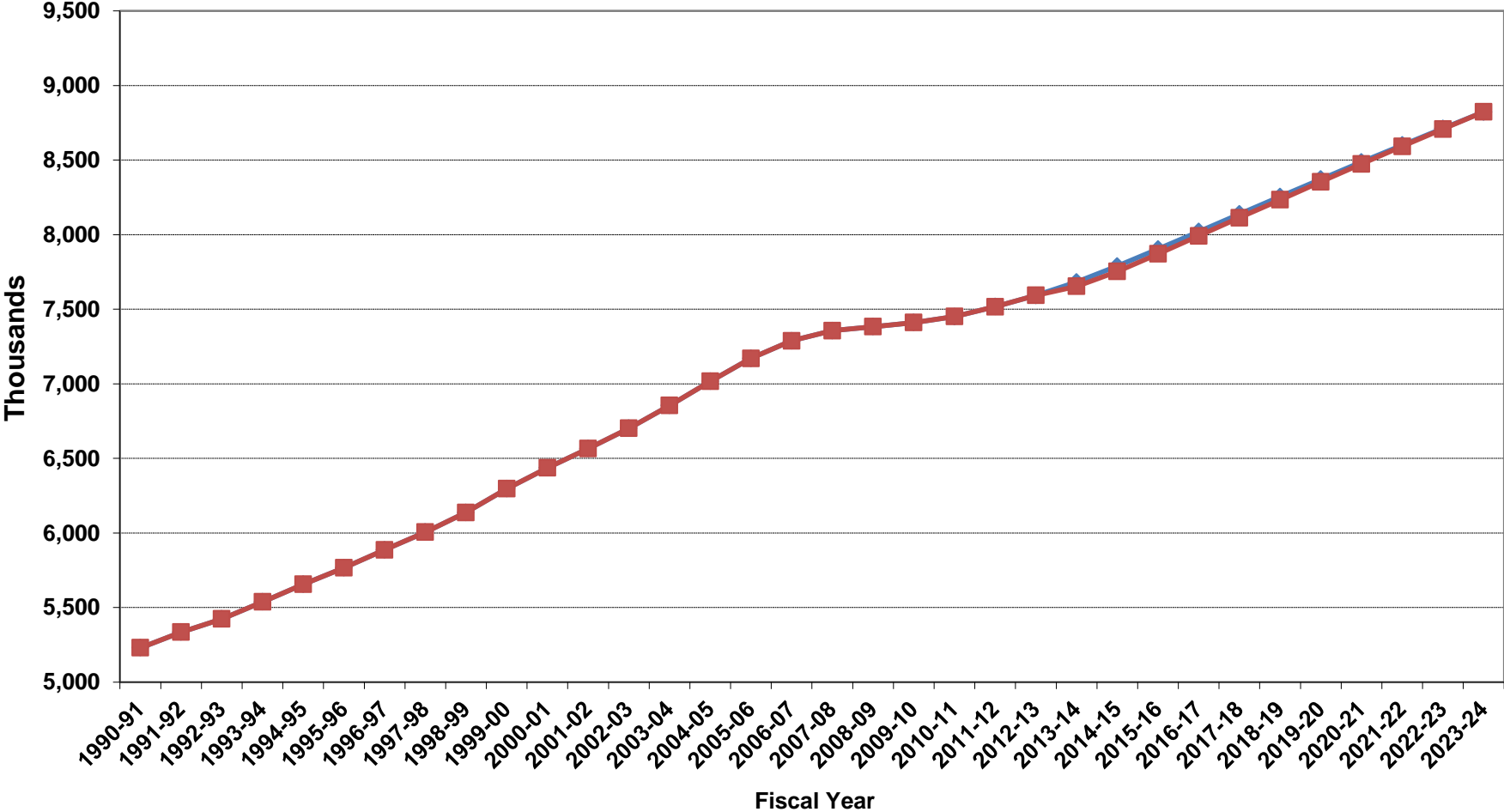
FDEC, 2014 November FDEC, 2015 February

Net Change In Florida Resident Population



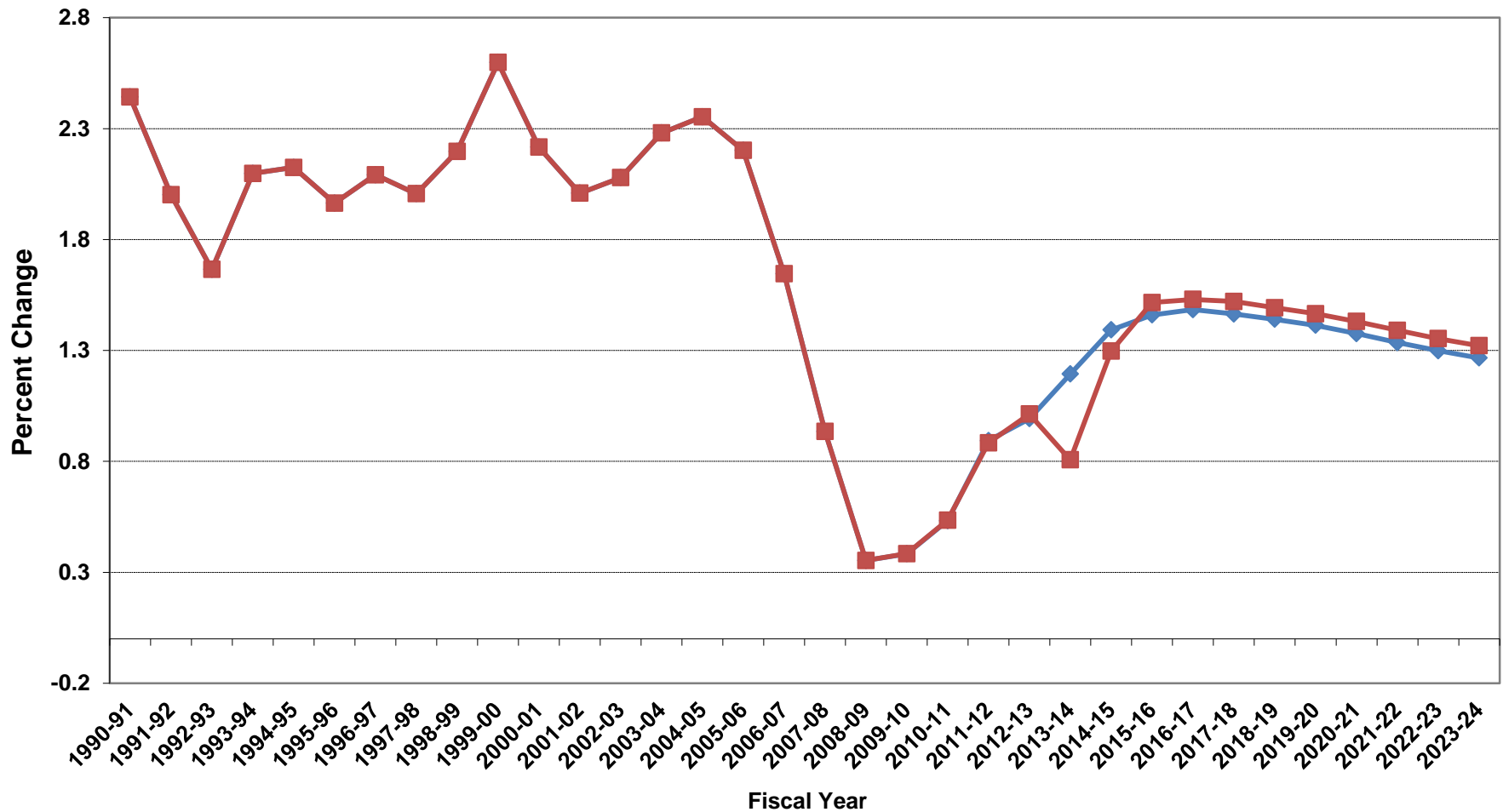
FDEC, 2014 November FDEC, 2015 February

Florida Resident Households



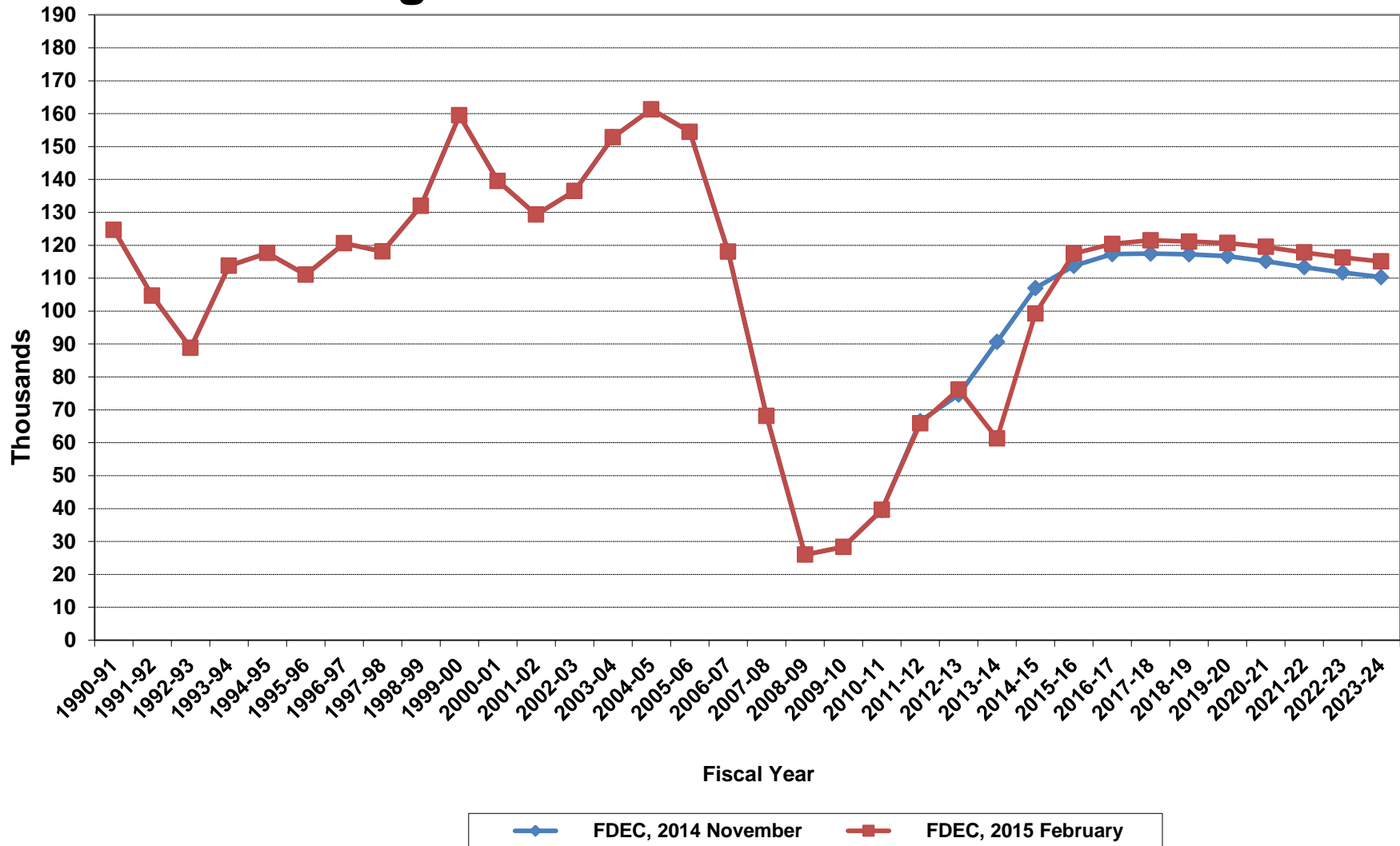
FDEC, 2014 November FDEC, 2015 February

Growth In Florida Resident Households

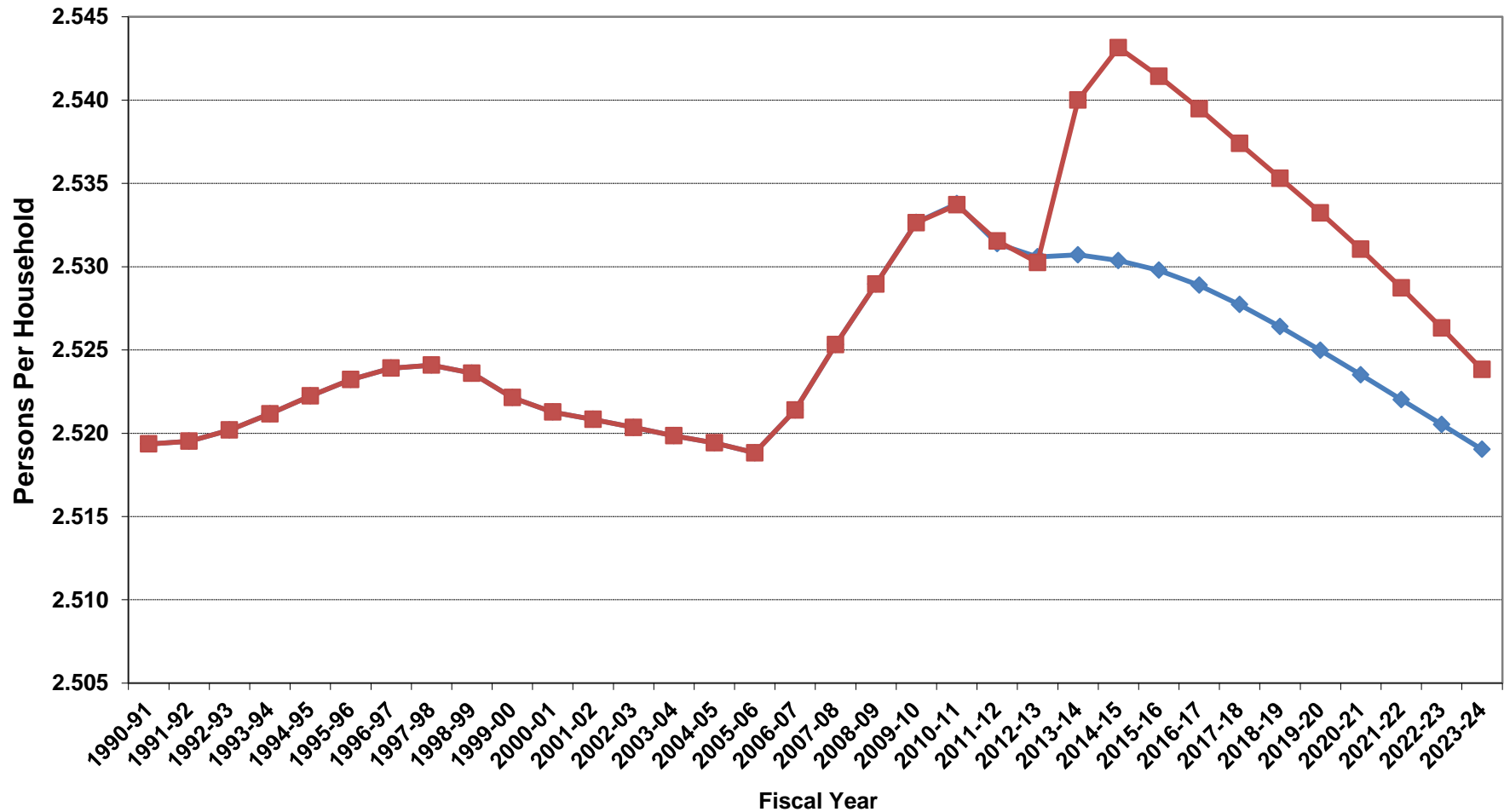


FDEC, 2014 November FDEC, 2015 February

Net Change In Florida Resident Households

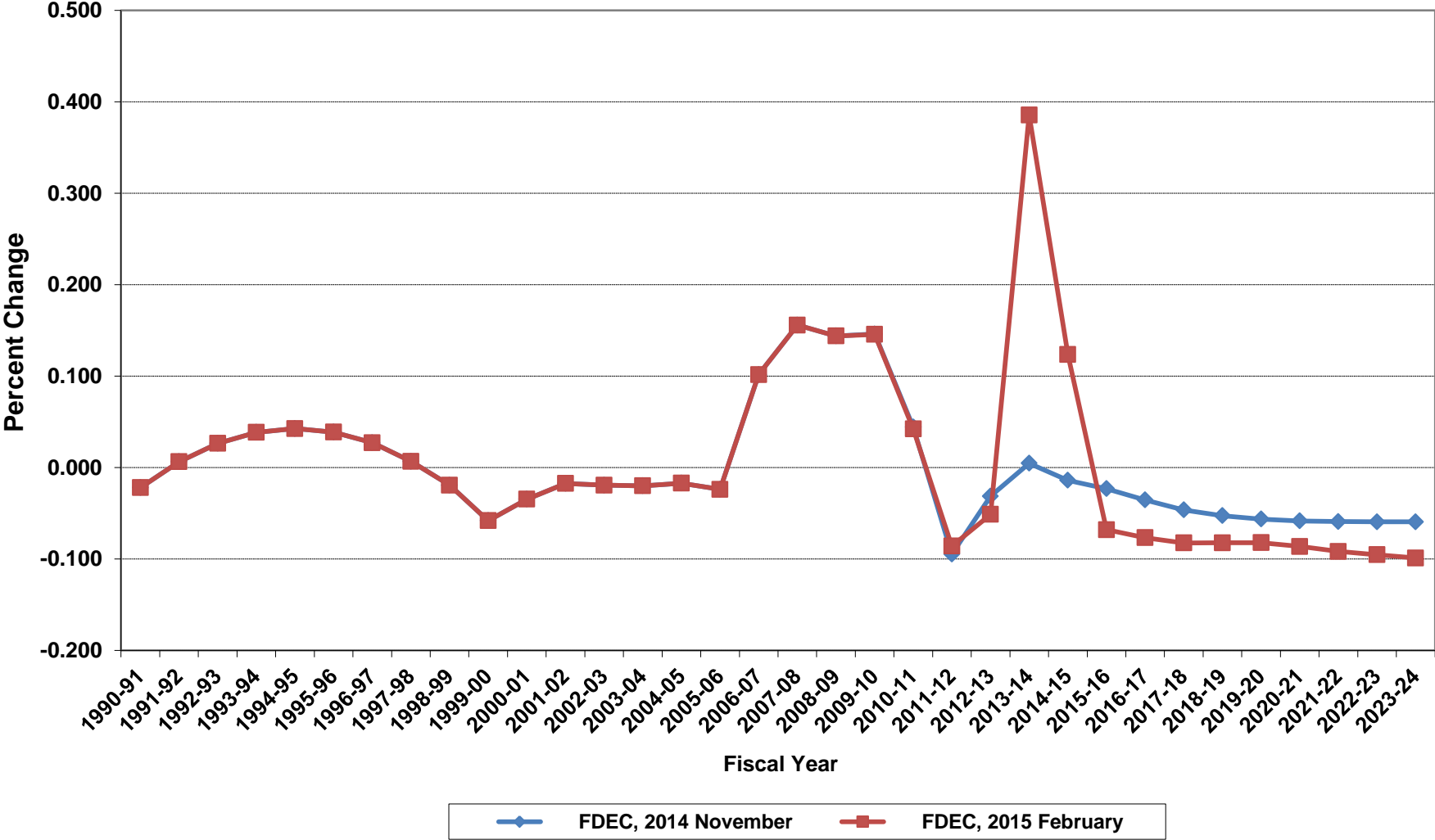


Average Florida Household Size

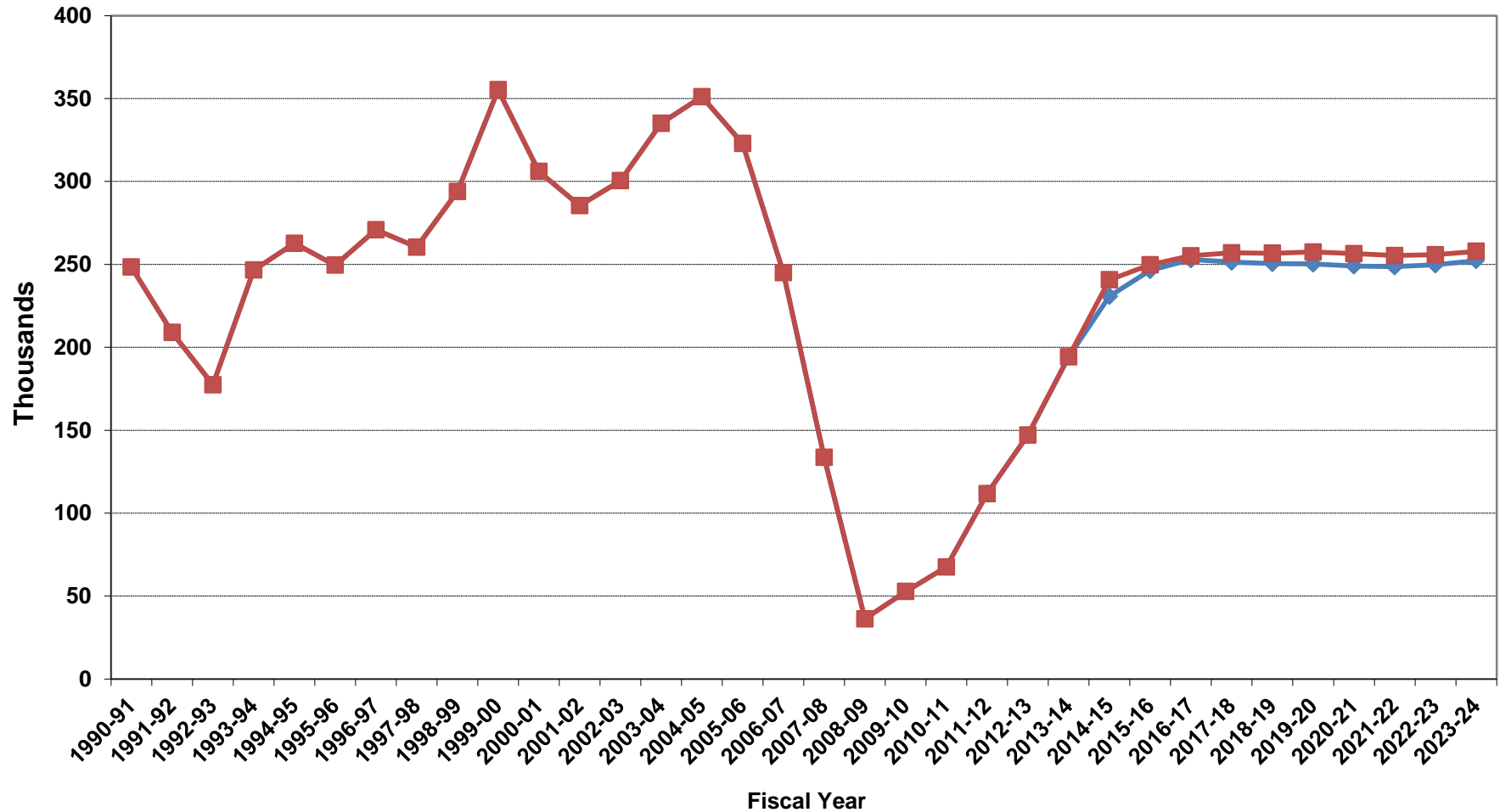


FDEC, 2014 November FDEC, 2015 February

Growth In Average Florida Household Size

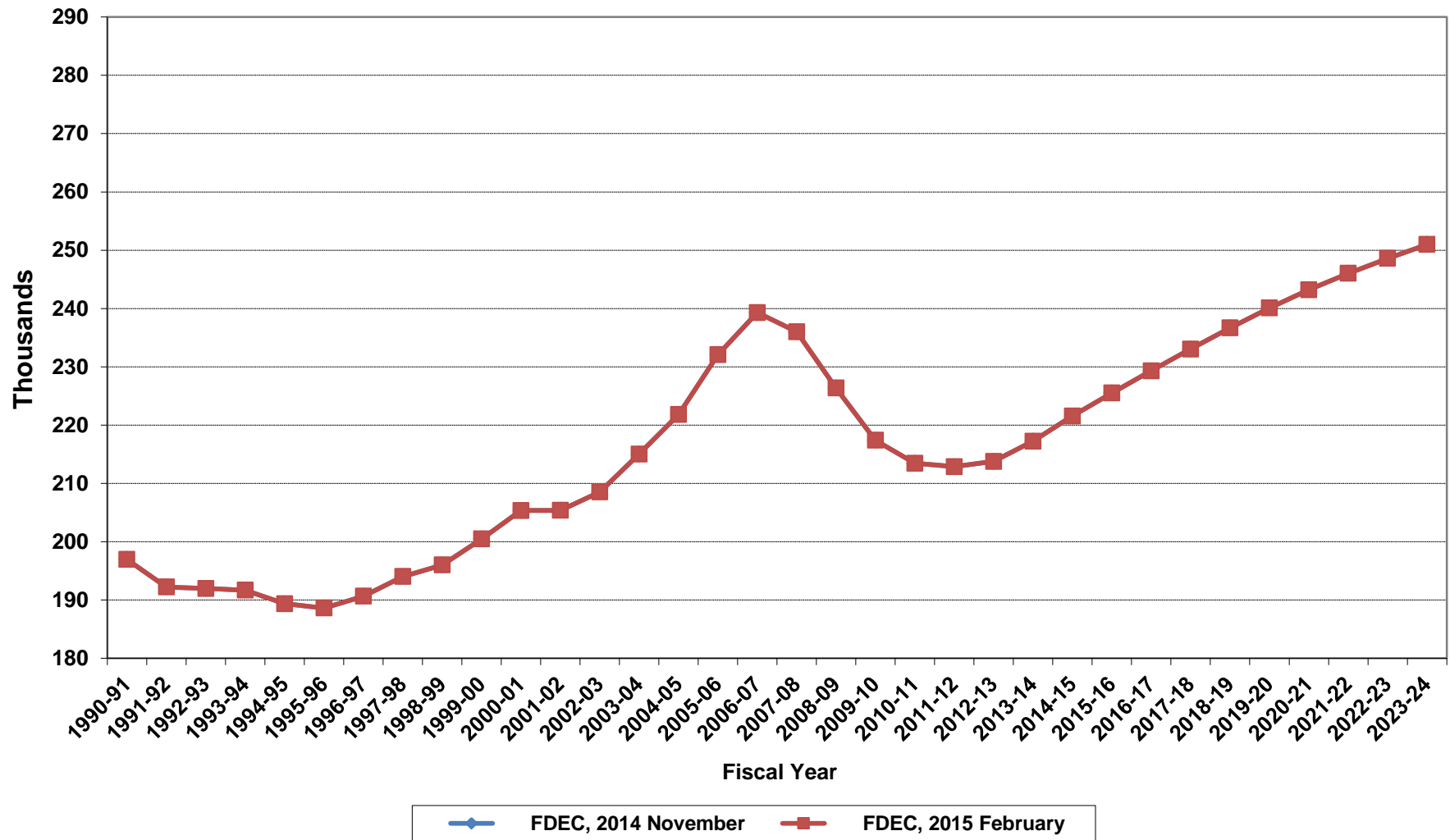


Florida Net Migration

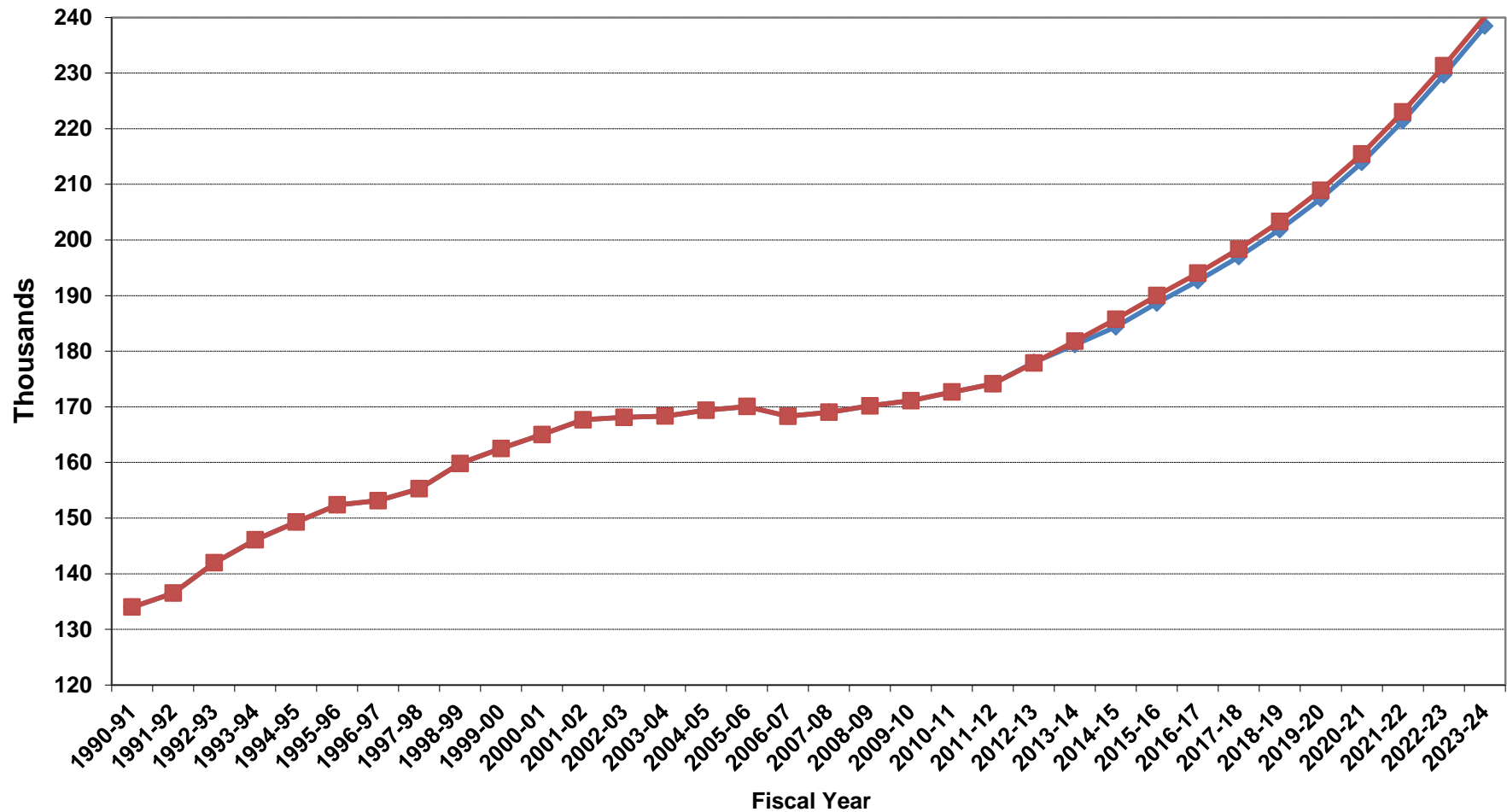


◆ FDEC, 2014 November
 ■ FDEC, 2015 February

Florida Resident Live Births

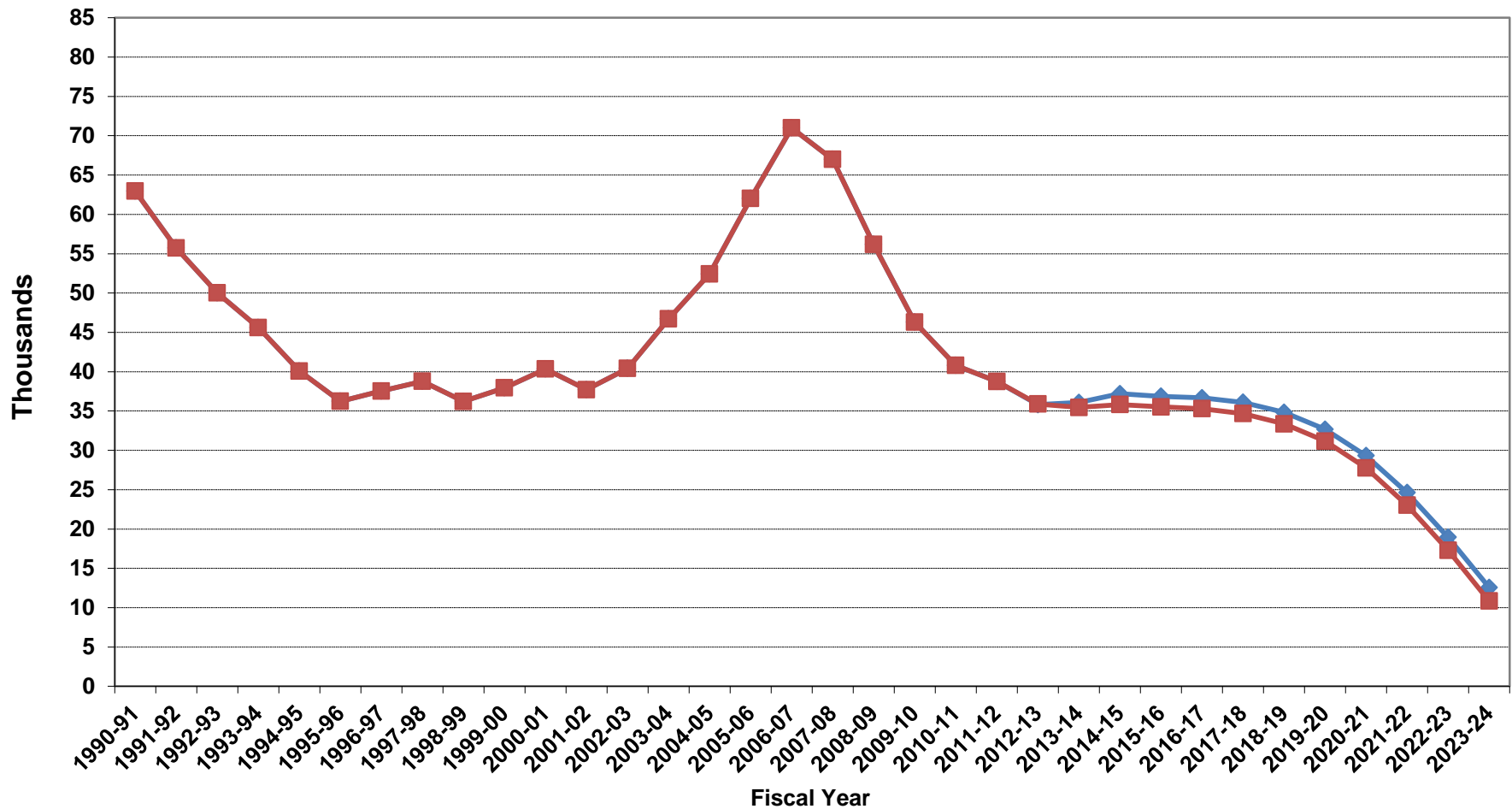


Florida Resident Deaths



FDEC, 2014 November FDEC, 2015 February

Florida Net Natural Increase



FDEC, 2014 November FDEC, 2015 February

Florida Population and Components of Change

Fiscal Year	Population (End of Fiscal Year)	Growth Rate	Annual Change in Population	Births	Deaths	Net Natural Increase	Net Migration
1950 - 51	2,981,346	6.50%	181,931	67,486	27,670	39,816	142,115
1951 - 52	3,155,442	5.84%	174,096	72,383	28,942	43,441	130,655
1952 - 53	3,312,521	4.98%	157,079	76,954	29,761	47,193	109,886
1953 - 54	3,504,323	5.79%	191,802	82,725	31,055	51,670	140,132
1954 - 55	3,747,400	6.94%	243,077	86,643	32,176	54,467	188,610
1955 - 56	4,046,062	7.97%	298,662	92,941	34,932	58,009	240,653
1956 - 57	4,370,045	8.01%	323,983	100,990	38,269	62,721	261,262
1957 - 58	4,629,510	5.94%	259,465	105,972	41,911	64,061	195,404
1958 - 59	4,812,270	3.95%	182,760	110,409	43,674	66,735	116,025
1959 - 60	4,998,508	3.87%	186,238	114,428	46,057	68,371	117,867
1960 - 61	5,185,913	3.75%	187,405	116,449	48,388	68,061	119,344
1961 - 62	5,367,899	3.51%	181,986	116,120	50,346	65,774	116,212
1962 - 63	5,553,522	3.46%	185,623	114,709	54,453	60,256	125,367
1963 - 64	5,728,499	3.15%	174,977	115,002	56,229	58,773	116,204
1964 - 65	5,881,195	2.67%	152,696	110,515	57,734	52,781	99,915
1965 - 66	6,065,768	3.14%	184,573	104,367	61,217	43,150	141,423
1966 - 67	6,249,674	3.03%	183,906	101,209	62,577	38,632	145,274
1967 - 68	6,441,756	3.07%	192,082	100,320	66,134	34,186	157,896
1968 - 69	6,633,546	2.98%	191,790	104,286	71,285	33,001	158,789
1969 - 70	6,861,118	3.43%	227,572	111,511	73,831	37,680	189,892
1970 - 71	7,233,583	5.43%	372,465	117,012	75,354	41,658	330,807
1971 - 72	7,681,540	6.19%	447,957	113,568	79,717	33,851	414,106
1972 - 73	8,157,883	6.20%	476,343	107,804	86,232	21,572	454,771
1973 - 74	8,515,208	4.38%	357,325	109,366	88,459	20,907	336,418
1974 - 75	8,648,587	1.57%	133,379	108,686	87,224	21,462	111,917
1975 - 76	8,782,975	1.55%	134,388	104,022	88,129	15,893	118,495
1976 - 77	8,972,678	2.16%	189,703	107,623	90,443	17,180	172,523
1977 - 78	9,225,527	2.82%	252,849	112,268	93,383	18,885	233,964
1978 - 79	9,523,728	3.23%	298,201	116,393	96,801	19,592	278,609
1979 - 80	9,914,652	4.10%	390,924	126,673	101,048	25,625	365,299
1980 - 81	10,212,969	3.01%	298,317	135,560	107,562	27,998	270,319
1981 - 82	10,492,851	2.74%	279,882	141,593	108,644	32,949	246,933
1982 - 83	10,748,466	2.44%	255,615	146,853	110,497	36,356	219,259
1983 - 84	11,065,911	2.95%	317,445	151,748	113,939	37,809	279,636
1984 - 85	11,405,533	3.07%	339,622	159,819	117,539	42,280	297,342
1985 - 86	11,740,069	2.93%	334,536	165,857	122,453	43,404	291,132
1986 - 87	12,083,241	2.92%	343,172	170,819	124,946	45,873	297,299
1987 - 88	12,410,339	2.71%	327,098	179,541	129,413	50,128	276,970
1988 - 89	12,723,719	2.53%	313,380	188,390	131,992	56,398	256,982
1989 - 90	13,017,296	2.31%	293,577	197,181	132,503	64,678	228,899
1990 - 91	13,326,892	2.38%	309,596	197,180	134,093	63,087	246,509
1991 - 92	13,552,021	1.69%	225,129	191,810	136,280	55,530	169,599
1992 - 93	13,802,571	1.85%	250,550	192,051	142,087	49,964	200,586
1993 - 94	14,120,323	2.30%	317,752	191,840	146,101	45,739	272,013
1994 - 95	14,406,418	2.03%	286,095	189,292	149,161	40,131	245,964
1995 - 96	14,701,040	2.05%	294,622	188,584	152,570	36,014	258,608
1996 - 97	15,012,615	2.12%	311,575	190,587	153,067	37,520	274,055
1997 - 98	15,310,069	1.98%	297,454	194,242	155,080	39,162	258,292
1998 - 99	15,680,164	2.42%	370,095	195,897	159,988	35,909	334,186
1999 - 00	16,069,889	2.49%	389,725	200,302	162,489	37,813	351,912
2000 - 01	16,385,615	1.96%	315,726	205,798	164,919	40,879	274,847
2001 - 02	16,718,076	2.03%	332,461	205,164	167,812	37,352	295,109
2002 - 03	17,074,258	2.13%	356,182	208,403	168,079	40,324	315,858
2003 - 04	17,475,944	2.35%	401,686	215,298	168,302	46,996	354,690
2004 - 05	17,876,215	2.29%	400,271	221,533	169,302	52,231	348,040
2005 - 06	18,236,885	2.02%	360,670	232,019	170,303	61,716	298,954
2006 - 07	18,501,231	1.45%	264,346	239,635	168,117	71,518	192,828
2007 - 08	18,636,837	0.73%	135,606	236,065	168,966	67,099	68,507
2008 - 09	18,711,844	0.40%	75,007	226,337	170,615	55,722	19,285
2009 - 10	18,826,644	0.61%	114,800	217,411	171,116	46,295	68,505

Florida Population and Components of Change

Fiscal Year	Population (End of Fiscal Year)	Growth Rate	Annual Change in Population	Births	Deaths	Net Natural Increase	Net Migration
2010 - 11	18,941,854	0.61%	115,210	213,467	172,663	40,804	74,406
2011 - 12	19,118,774	0.93%	176,920	212,878	174,121	38,757	138,163
2012 - 13	19,315,189	1.03%	196,415	213,786	177,894	35,892	160,523
2013 - 14	19,576,915	1.36%	261,726	217,234	181,781	35,453	226,273
2014 - 15	19,860,805	1.45%	283,890	221,564	185,733	35,831	248,059
2015 - 16	20,148,300	1.45%	287,495	225,506	189,984	35,522	251,973
2016 - 17	20,440,445	1.45%	292,145	229,319	194,023	35,296	256,849
2017 - 18	20,731,275	1.42%	290,830	233,055	198,373	34,682	256,148
2018 - 19	21,020,686	1.40%	289,411	236,671	203,300	33,371	256,040
2019 - 20	21,307,927	1.37%	287,241	240,089	208,916	31,173	256,068
2020 - 21	21,589,152	1.32%	281,225	243,223	215,453	27,770	253,455
2021 - 22	21,864,705	1.28%	275,553	246,036	223,012	23,024	252,529
2022 - 23	22,135,478	1.24%	270,773	248,594	231,302	17,292	253,481
2023 - 24	22,402,306	1.21%	266,828	250,988	240,151	10,837	255,991
2024 - 25	22,666,031	1.18%	263,725	253,161	248,019	5,142	258,583
2025 - 26	22,927,052	1.15%	261,021	254,880	253,672	1,208	259,813
2026 - 27	23,184,879	1.12%	257,827	255,847	257,641	-1,794	259,621
2027 - 28	23,438,913	1.10%	254,034	256,206	260,340	-4,134	258,168
2028 - 29	23,688,561	1.07%	249,648	256,524	262,400	-5,876	255,524
2029 - 30	23,933,236	1.03%	244,675	257,024	265,869	-8,845	253,520