

Demographic Estimating Conference
Executive Summary
July 6, 2016

The Demographic Estimating Conference met on July 6, 2016 to adopt a new population forecast. The data reflect final April 1, 2015 household estimates, in addition to other recent demographic and economic-related data. In the short-term, the population projections were revised down very slightly.

Population growth in Florida continues to strengthen. Historically, Florida’s population growth has been driven by net migration (more people permanently moving into the state than leaving). However, net migration fell to record low levels during much of 2008 and into 2009, accounting for just 25.7% of population growth during FY 2008-09. During that time period, natural increase (births minus deaths) actually exceeded net migration. Net migration includes both domestic and international migration, and it was primarily the domestic migration component that led to the slowdown in population growth. The lower levels of net migration were largely due to national economic conditions, including weakened housing markets and other effects from the Great Recession that made it difficult for people in other states to relocate to Florida. Reflecting migration’s return as a decisive factor, the expected net migration share of Florida’s FY 2015-16 population growth is 90.1%.

Florida’s population is expected to have grown by 314,051 (1.58%) between April 1, 2015 and April 1, 2016, representing the greatest annual increase in population since 2006. Annual population change is expected to remain above 300,000 net new residents per year for the next five years.

April 1	Population	Percent Change	Change
2012	19,074,434	0.90%	169,364
2013	19,259,543	0.97%	185,109
2014	19,507,369	1.29%	247,826
2015	19,815,183	1.58%	307,814
2016	20,129,234	1.58%	314,051
2017	20,443,216	1.56%	313,982
2018	20,755,036	1.53%	311,820
2019	21,063,392	1.49%	308,356
2020	21,369,497	1.45%	306,105

Between April 1, 2015 and April 1, 2020, population growth is expected to average 310,863 net new residents per year, representing a compound growth rate of 1.52% over this five-year time horizon. These increases are analogous to adding a city slightly larger than Orlando every year.

Of note, the population estimates developed by the U.S. Census Bureau continue to be higher than the official state estimates adopted by the Demographic Estimating Conference. As of July 1, 2015, this difference was over 375,000 persons. The Legislative Office of Economic and Demographic Research is continuing to work to further understand how the different methodologies contribute to the difference in the two sets of estimates.

Florida Demographic Estimating Conference

Tables
Conference Packet

July 6, 2016

Florida Resident Population

April 1

Year	Florida Demographic Estimating Conference December 2015			Florida Demographic Estimating Conference July 2016		
	Population	% Change	Change	Population	% Change	Change
1990	12,938,071	2.27%	287,136	12,938,071	2.27%	287,136
1991	13,258,732	2.48%	320,661	13,258,732	2.48%	320,661
1992	13,497,541	1.80%	238,809	13,497,541	1.80%	238,809
1993	13,730,115	1.72%	232,574	13,730,115	1.72%	232,574
1994	14,043,757	2.28%	313,642	14,043,757	2.28%	313,642
1995	14,335,992	2.08%	292,235	14,335,992	2.08%	292,235
1996	14,623,421	2.00%	287,429	14,623,421	2.00%	287,429
1997	14,938,314	2.15%	314,893	14,938,314	2.15%	314,893
1998	15,230,421	1.96%	292,107	15,230,421	1.96%	292,107
1999	15,580,244	2.30%	349,823	15,580,244	2.30%	349,823
2000	15,982,824	2.58%	402,580	15,982,824	2.58%	402,580
2001	16,305,100	2.02%	322,276	16,305,100	2.02%	322,276
2002	16,634,256	2.02%	329,156	16,634,256	2.02%	329,156
2003	16,979,706	2.08%	345,450	16,979,706	2.08%	345,450
2004	17,374,824	2.33%	395,118	17,374,824	2.33%	395,118
2005	17,778,156	2.32%	403,332	17,778,156	2.32%	403,332
2006	18,154,475	2.12%	376,319	18,154,475	2.12%	376,319
2007	18,446,768	1.61%	292,293	18,446,768	1.61%	292,293
2008	18,613,905	0.91%	167,137	18,613,905	0.91%	167,137
2009	18,687,425	0.39%	73,520	18,687,425	0.39%	73,520
2010	18,801,332	0.61%	113,885	18,801,332	0.61%	113,907
2011	18,905,070	0.55%	103,738	18,905,070	0.55%	103,738
2012	19,074,434	0.90%	169,364	19,074,434	0.90%	169,364
2013	19,259,543	0.97%	185,109	19,259,543	0.97%	185,109
2014	19,507,369	1.29%	247,826	19,507,369	1.29%	247,826
2015	19,815,183	1.58%	307,814	19,815,183	1.58%	307,814
Begins forecast						
2016	20,130,780	1.59%	315,597	20,129,234	1.58%	314,051
2017	20,445,808	1.56%	315,028	20,443,216	1.56%	313,982
2018	20,757,668	1.53%	311,860	20,755,036	1.53%	311,820
2019	21,066,063	1.49%	308,395	21,063,392	1.49%	308,356
2020	21,372,207	1.45%	306,144	21,369,497	1.45%	306,105
2021	21,671,862	1.40%	299,655	21,669,990	1.41%	300,493
2022	21,964,084	1.35%	292,222	21,964,365	1.36%	294,375
2023	22,249,208	1.30%	285,124	22,253,785	1.32%	289,420
2024	22,527,571	1.25%	278,363	22,536,818	1.27%	283,033
5-Year Averages						
2025	22,799,508	1.30%	285,460	22,813,018	1.32%	288,704
2030	24,070,978	1.09%	254,294	24,099,828	1.10%	257,362
2035	25,212,399	0.93%	228,284	25,263,285	0.95%	232,691
2040	26,252,141	0.81%	207,948	26,316,424	0.82%	210,628

Florida Resident Households

April 1

Year	Florida Demographic Estimating Conference December 2015			Florida Demographic Estimating Conference July 2016		
	Households	% Change	Change	Households	% Change	Change
1990	5,134,869	3.40%	168,985	5,134,869	3.40%	168,985
1991	5,283,154	2.89%	148,285	5,283,154	2.89%	148,285
1992	5,378,499	1.80%	95,345	5,378,499	1.80%	95,345
1993	5,478,476	1.86%	99,977	5,478,476	1.86%	99,977
1994	5,589,093	2.02%	110,617	5,589,093	2.02%	110,617
1995	5,697,328	1.94%	108,235	5,697,328	1.94%	108,235
1996	5,806,031	1.91%	108,703	5,806,031	1.91%	108,703
1997	5,929,613	2.13%	123,582	5,929,613	2.13%	123,582
1998	6,040,514	1.87%	110,901	6,040,514	1.87%	110,901
1999	6,182,346	2.35%	141,832	6,182,346	2.35%	141,832
2000	6,338,075	2.52%	155,729	6,338,075	2.52%	155,729
2001	6,467,215	2.04%	129,140	6,467,215	2.04%	129,140
2002	6,599,035	2.04%	131,820	6,599,035	2.04%	131,820
2003	6,737,370	2.10%	138,335	6,737,370	2.10%	138,335
2004	6,895,469	2.35%	158,099	6,895,469	2.35%	158,099
2005	7,056,889	2.34%	161,420	7,056,889	2.34%	161,420
2006	7,207,645	2.14%	150,756	7,207,645	2.14%	150,756
2007	7,312,907	1.46%	105,262	7,312,907	1.46%	105,262
2008	7,368,319	0.76%	55,412	7,368,319	0.76%	55,412
2009	7,386,570	0.25%	18,251	7,386,570	0.25%	18,251
2010	7,420,812	0.46%	34,242	7,420,812	0.46%	34,242
2011	7,461,978	0.55%	41,166	7,461,978	0.55%	41,166
2012	7,537,442	1.01%	75,464	7,537,442	1.01%	75,464
2013	7,610,153	0.96%	72,711	7,610,153	0.96%	72,711
2014	7,669,541	0.78%	59,388	7,669,541	0.78%	59,388
2015	7,767,146	1.27%	97,605	7,785,434	1.51%	115,893
Begins forecast						
2016	7,886,910	1.54%	119,764	7,914,312	1.66%	128,878
2017	8,013,461	1.60%	126,551	8,043,474	1.63%	129,162
2018	8,142,206	1.61%	128,745	8,172,701	1.61%	129,227
2019	8,270,517	1.58%	128,311	8,301,493	1.58%	128,792
2020	8,398,460	1.55%	127,943	8,429,915	1.55%	128,422
2021	8,524,071	1.50%	125,611	8,555,996	1.50%	126,081
2022	8,646,958	1.44%	122,887	8,679,343	1.44%	123,347
2023	8,767,790	1.40%	120,832	8,800,628	1.40%	121,285
2024	8,886,599	1.36%	118,809	8,919,882	1.36%	119,254
			5-Year Averages			
2025	9,003,433	1.40%	120,995	9,037,154	1.40%	121,448
2030	9,550,189	1.19%	109,351	9,585,958	1.19%	109,761
2035	10,040,029	1.01%	97,968	10,077,634	1.01%	98,335
2040	10,494,787	0.89%	90,952	10,534,097	0.89%	91,293

Quarterly Data Table

	<u>2010-1</u>	<u>2010-2</u>	<u>2010-3</u>	<u>2010-4</u>	<u>2011-1</u>	<u>2011-2</u>	<u>2011-3</u>	<u>2011-4</u>	<u>2012-1</u>	<u>2012-2</u>	<u>2012-3</u>	<u>2012-4</u>	<u>2013-1</u>	<u>2013-2</u>
Population														
FDEC, 2015 December	18,786.1	18,813.9	18,838.3	18,862.7	18,890.2	18,923.4	18,962.7	19,006.3	19,051.6	19,096.7	19,141.3	19,186.7	19,234.7	19,286.9
FDEC, 2016 July	18,786.1	18,813.9	18,838.3	18,862.7	18,890.2	18,923.4	18,962.7	19,006.3	19,051.6	19,096.7	19,141.3	19,186.7	19,234.7	19,286.8
Population Growth Rate														
FDEC, 2015 December	0.65	0.59	0.52	0.52	0.58	0.71	0.83	0.92	0.96	0.95	0.94	0.95	1.00	1.09
FDEC, 2016 July	0.65	0.59	0.52	0.52	0.58	0.71	0.83	0.92	0.96	0.95	0.94	0.95	1.00	1.09
Net Change in Population														
FDEC, 2015 December	30.5	27.9	24.4	24.4	27.5	33.2	39.3	43.5	45.3	45.1	44.6	45.4	48.0	52.2
FDEC, 2016 July	30.5	27.9	24.4	24.4	27.5	33.2	39.3	43.5	45.3	45.1	44.6	45.4	48.0	52.2
Households														
FDEC, 2015 December	7,416.0	7,425.2	7,434.2	7,443.9	7,455.5	7,470.0	7,487.4	7,506.8	7,527.2	7,547.5	7,567.0	7,585.3	7,602.2	7,617.3
FDEC, 2016 July	7,416.0	7,425.2	7,434.2	7,443.9	7,455.6	7,470.0	7,487.3	7,506.7	7,527.1	7,547.6	7,567.3	7,585.8	7,602.4	7,616.8
Household Growth Rate														
FDEC, 2015 December	0.51	0.50	0.48	0.52	0.63	0.78	0.93	1.04	1.09	1.08	1.04	0.97	0.89	0.80
FDEC, 2016 July	0.51	0.50	0.48	0.52	0.63	0.78	0.93	1.04	1.09	1.09	1.05	0.98	0.88	0.76
Net Change in Households														
FDEC, 2015 December	9.5	9.2	8.9	9.7	11.6	14.5	17.4	19.4	20.3	20.3	19.5	18.4	16.8	15.1
FDEC, 2016 July	9.5	9.2	9.0	9.7	11.6	14.5	17.3	19.4	20.4	20.5	19.7	18.4	16.6	14.5
Household Size														
FDEC, 2015 December	2.533	2.534	2.534	2.534	2.534	2.533	2.533	2.532	2.531	2.530	2.530	2.529	2.530	2.532
FDEC, 2016 July	2.533	2.534	2.534	2.534	2.534	2.533	2.533	2.532	2.531	2.530	2.529	2.529	2.530	2.532
Household Size Growth Rate														
FDEC, 2015 December	0.14	0.10	0.04	-0.01	-0.04	-0.07	-0.10	-0.12	-0.13	-0.13	-0.10	-0.02	0.11	0.29
FDEC, 2016 July	0.14	0.10	0.04	-0.01	-0.04	-0.07	-0.10	-0.12	-0.13	-0.14	-0.11	-0.03	0.12	0.32
Net Migration														
FDEC, 2015 December	19.4	17.2	14.1	14.3	17.2	23.1	29.3	33.7	35.8	35.8	35.4	36.4	39.1	43.4
FDEC, 2016 July	19.4	17.2	14.1	14.3	17.2	23.0	29.3	33.7	35.8	35.8	35.4	36.4	39.1	43.3
Births														
FDEC, 2015 December	54.1	53.7	53.5	53.3	53.4	53.3	53.3	53.2	53.2	53.2	53.3	53.4	53.5	53.7
FDEC, 2016 July	54.1	53.7	53.5	53.3	53.4	53.3	53.3	53.2	53.2	53.2	53.3	53.4	53.5	53.7
Deaths														
FDEC, 2015 December	43.0	43.1	43.2	43.2	43.1	43.1	43.2	43.4	43.6	43.8	44.1	44.3	44.6	44.9
FDEC, 2016 July	43.0	43.1	43.2	43.2	43.1	43.1	43.3	43.4	43.6	43.8	44.1	44.3	44.6	44.9
Net Natural Increase														
FDEC, 2015 December	11.1	10.6	10.3	10.0	10.3	10.2	10.0	9.8	9.5	9.3	9.2	9.0	8.9	8.8
FDEC, 2016 July	11.1	10.6	10.3	10.0	10.3	10.2	10.0	9.8	9.5	9.3	9.2	9.0	8.9	8.8

Quarterly Data Table

	<u>2013-3</u>	<u>2013-4</u>	<u>2014-1</u>	<u>2014-2</u>	<u>2014-3</u>	<u>2014-4</u>	<u>2015-1</u>	<u>2015-2</u>	<u>2015-3</u>	<u>2015-4</u>	<u>2016-1</u>	<u>2016-2</u>	<u>2016-3</u>	<u>2016-4</u>
Population														
FDEC, 2015 December	19,344.0	19,406.1	19,472.8	19,544.0	19,619.0	19,696.5	19,775.5	19,854.8	19,933.8	20,012.7	20,091.4	20,170.2	20,249.0	20,327.8
FDEC, 2016 July	19,344.0	19,406.0	19,472.8	19,544.1	19,619.1	19,696.7	19,775.6	19,854.6	19,933.3	20,011.8	20,090.1	20,168.5	20,247.0	20,325.5
Population Growth Rate														
FDEC, 2015 December	1.19	1.29	1.38	1.47	1.54	1.59	1.61	1.61	1.60	1.59	1.58	1.58	1.57	1.57
FDEC, 2016 July	1.19	1.29	1.38	1.47	1.54	1.59	1.61	1.61	1.60	1.58	1.57	1.57	1.57	1.56
Net Change in Population														
FDEC, 2015 December	57.1	62.1	66.8	71.2	74.9	77.6	79.0	79.3	79.0	78.8	78.8	78.8	78.8	78.8
FDEC, 2016 July	57.1	62.0	66.8	71.3	75.0	77.6	78.9	79.1	78.7	78.4	78.3	78.4	78.5	78.5
Households														
FDEC, 2015 December	7,631.2	7,645.3	7,661.1	7,679.7	7,701.7	7,726.5	7,753.3	7,781.6	7,810.8	7,840.8	7,871.5	7,902.5	7,933.9	7,965.6
FDEC, 2016 July	7,630.0	7,643.8	7,660.3	7,681.5	7,707.6	7,737.3	7,769.2	7,801.7	7,834.0	7,866.1	7,898.3	7,930.4	7,962.7	7,995.0
Household Growth Rate														
FDEC, 2015 December	0.73	0.74	0.83	0.98	1.15	1.29	1.40	1.47	1.51	1.55	1.57	1.59	1.60	1.61
FDEC, 2016 July	0.69	0.72	0.87	1.11	1.37	1.55	1.66	1.68	1.67	1.65	1.64	1.64	1.64	1.63
Net Change in Households														
FDEC, 2015 December	14.0	14.1	15.7	18.7	22.0	24.8	26.8	28.3	29.3	30.0	30.6	31.1	31.4	31.7
FDEC, 2016 July	13.2	13.8	16.5	21.2	26.1	29.8	31.9	32.5	32.3	32.1	32.1	32.2	32.2	32.3
Household Size														
FDEC, 2015 December	2.535	2.538	2.542	2.545	2.547	2.549	2.551	2.552	2.552	2.552	2.552	2.552	2.552	2.552
FDEC, 2016 July	2.535	2.539	2.542	2.544	2.545	2.546	2.545	2.545	2.544	2.544	2.544	2.543	2.543	2.542
Household Size Growth Rate														
FDEC, 2015 December	0.45	0.54	0.55	0.49	0.39	0.30	0.21	0.14	0.09	0.04	0.01	-0.01	-0.03	-0.04
FDEC, 2016 July	0.49	0.56	0.51	0.36	0.18	0.04	-0.04	-0.07	-0.07	-0.07	-0.07	-0.07	-0.07	-0.07
Net Migration														
FDEC, 2015 December	48.4	53.4	57.9	62.4	66.3	69.0	70.9	71.4	71.3	71.2	71.1	71.2	71.3	71.3
FDEC, 2016 July	48.4	53.3	57.9	62.5	66.3	69.0	70.7	71.0	70.8	70.6	70.6	70.8	71.0	71.1
Births														
FDEC, 2015 December	53.9	54.1	54.5	54.8	55.1	55.4	55.7	55.9	56.2	56.5	56.8	57.1	57.5	57.8
FDEC, 2016 July	53.9	54.1	54.6	54.9	55.1	55.4	55.5	55.8	56.0	56.3	56.7	57.0	57.3	57.6
Deaths														
FDEC, 2015 December	45.1	45.4	45.7	46.0	46.4	46.9	47.6	48.0	48.5	48.9	49.2	49.5	49.9	50.3
FDEC, 2016 July	45.1	45.4	45.7	46.1	46.4	46.8	47.3	47.7	48.1	48.5	49.0	49.4	49.8	50.1
Net Natural Increase														
FDEC, 2015 December	8.7	8.7	8.9	8.8	8.7	8.5	8.1	7.9	7.8	7.7	7.6	7.6	7.6	7.5
FDEC, 2016 July	8.7	8.7	8.8	8.8	8.7	8.6	8.2	8.1	7.9	7.8	7.7	7.6	7.5	7.5

Quarterly Data Table

	<u>2017-1</u>	<u>2017-2</u>	<u>2017-3</u>	<u>2017-4</u>	<u>2018-1</u>	<u>2018-2</u>	<u>2018-3</u>	<u>2018-4</u>	<u>2019-1</u>	<u>2019-2</u>	<u>2019-3</u>	<u>2019-4</u>	<u>2020-1</u>	<u>2020-2</u>
Population														
FDEC, 2015 December	20,406.5	20,485.0	20,563.2	20,641.2	20,718.9	20,796.4	20,873.6	20,950.7	21,027.6	21,104.4	21,181.1	21,257.7	21,334.1	21,410.0
FDEC, 2016 July	20,404.0	20,482.4	20,560.5	20,638.5	20,716.2	20,793.7	20,870.9	20,948.0	21,024.9	21,101.8	21,178.6	21,255.2	21,331.5	21,407.4
Population Growth Rate														
FDEC, 2015 December	1.56	1.55	1.54	1.53	1.51	1.50	1.49	1.49	1.48	1.47	1.46	1.45	1.45	1.43
FDEC, 2016 July	1.55	1.55	1.54	1.53	1.51	1.50	1.49	1.49	1.48	1.47	1.46	1.45	1.44	1.43
Net Change in Population														
FDEC, 2015 December	78.7	78.5	78.2	78.0	77.7	77.5	77.3	77.1	76.9	76.8	76.7	76.5	76.4	76.0
FDEC, 2016 July	78.5	78.4	78.2	78.0	77.7	77.5	77.2	77.1	76.9	76.9	76.8	76.6	76.3	75.9
Households														
FDEC, 2015 December	7,997.5	8,029.5	8,061.7	8,093.9	8,126.1	8,158.3	8,190.4	8,222.5	8,254.5	8,286.5	8,318.6	8,350.5	8,382.5	8,414.3
FDEC, 2016 July	8,027.3	8,059.6	8,092.0	8,124.3	8,156.6	8,188.8	8,221.0	8,253.2	8,285.4	8,317.6	8,349.8	8,381.9	8,413.9	8,445.8
Household Growth Rate														
FDEC, 2015 December	1.61	1.61	1.61	1.61	1.60	1.59	1.58	1.58	1.57	1.56	1.55	1.55	1.54	1.53
FDEC, 2016 July	1.63	1.62	1.61	1.61	1.60	1.59	1.58	1.58	1.57	1.56	1.56	1.55	1.54	1.52
Net Change in Households														
FDEC, 2015 December	31.9	32.0	32.2	32.2	32.2	32.2	32.1	32.1	32.0	32.0	32.0	32.0	32.0	31.8
FDEC, 2016 July	32.3	32.3	32.3	32.3	32.3	32.2	32.2	32.2	32.2	32.2	32.2	32.1	32.0	31.9
Household Size														
FDEC, 2015 December	2.552	2.551	2.551	2.550	2.550	2.549	2.549	2.548	2.547	2.547	2.546	2.546	2.545	2.544
FDEC, 2016 July	2.542	2.541	2.541	2.540	2.540	2.539	2.539	2.538	2.538	2.537	2.536	2.536	2.535	2.535
Household Size Growth Rate														
FDEC, 2015 December	-0.05	-0.06	-0.07	-0.08	-0.09	-0.09	-0.09	-0.09	-0.09	-0.09	-0.09	-0.09	-0.09	-0.09
FDEC, 2016 July	-0.07	-0.08	-0.08	-0.08	-0.08	-0.08	-0.09	-0.09	-0.09	-0.09	-0.09	-0.09	-0.09	-0.09
Net Migration														
FDEC, 2015 December	71.1	70.9	70.6	70.4	70.2	70.0	69.8	69.6	69.6	69.5	69.5	69.4	69.4	69.1
FDEC, 2016 July	71.0	70.9	70.8	70.6	70.3	70.1	69.9	69.7	69.6	69.5	69.5	69.4	69.2	69.1
Births														
FDEC, 2015 December	58.2	58.5	58.9	59.2	59.5	59.7	60.0	60.2	60.5	60.7	60.9	61.1	61.3	61.4
FDEC, 2016 July	57.9	58.2	58.5	58.8	59.2	59.5	59.8	60.1	60.6	60.9	61.2	61.4	61.6	61.8
Deaths														
FDEC, 2015 December	50.6	51.0	51.3	51.6	51.9	52.2	52.5	52.8	53.1	53.4	53.7	54.0	54.2	54.5
FDEC, 2016 July	50.4	50.7	51.1	51.4	51.8	52.1	52.5	52.8	53.2	53.6	53.9	54.2	54.6	54.9
Net Natural Increase														
FDEC, 2015 December	7.6	7.6	7.6	7.6	7.6	7.5	7.5	7.4	7.4	7.3	7.2	7.1	7.0	6.9
FDEC, 2016 July	7.5	7.5	7.4	7.4	7.4	7.4	7.3	7.3	7.4	7.3	7.3	7.2	7.0	6.9

Quarterly Data Table

	<u>2020-3</u>	<u>2020-4</u>	<u>2021-1</u>	<u>2021-2</u>	<u>2021-3</u>	<u>2021-4</u>	<u>2022-1</u>	<u>2022-2</u>	<u>2022-3</u>	<u>2022-4</u>	<u>2023-1</u>	<u>2023-2</u>	<u>2023-3</u>	<u>2023-4</u>
Population														
FDEC, 2015 December	21,485.4	21,560.3	21,634.8	21,708.7	21,782.2	21,855.3	21,927.9	22,000.1	22,071.8	22,143.0	22,213.9	22,284.3	22,354.3	22,423.9
FDEC, 2016 July	21,482.9	21,558.0	21,632.7	21,707.0	21,781.0	21,854.5	21,927.8	22,000.8	22,073.5	22,145.9	22,217.9	22,289.5	22,360.6	22,431.4
Population Growth Rate														
FDEC, 2015 December	1.42	1.40	1.39	1.37	1.36	1.35	1.34	1.32	1.31	1.30	1.29	1.27	1.26	1.25
FDEC, 2016 July	1.42	1.41	1.39	1.38	1.37	1.36	1.35	1.34	1.33	1.32	1.31	1.30	1.28	1.27
Net Change in Population														
FDEC, 2015 December	75.4	74.9	74.4	74.0	73.5	73.1	72.6	72.2	71.7	71.3	70.8	70.4	70.0	69.6
FDEC, 2016 July	75.5	75.1	74.7	74.3	73.9	73.6	73.3	73.0	72.7	72.4	72.0	71.6	71.2	70.8
Households														
FDEC, 2015 December	8,445.9	8,477.3	8,508.5	8,539.5	8,570.4	8,601.1	8,631.7	8,662.2	8,692.5	8,722.7	8,752.8	8,782.7	8,812.6	8,842.3
FDEC, 2016 July	8,477.5	8,509.0	8,540.4	8,571.5	8,602.5	8,633.3	8,664.0	8,694.6	8,725.0	8,755.4	8,785.6	8,815.6	8,845.6	8,875.4
Household Growth Rate														
FDEC, 2015 December	1.51	1.50	1.48	1.47	1.45	1.44	1.43	1.42	1.41	1.40	1.39	1.38	1.37	1.36
FDEC, 2016 July	1.51	1.50	1.48	1.47	1.45	1.44	1.43	1.42	1.41	1.40	1.39	1.38	1.37	1.36
Net Change in Households														
FDEC, 2015 December	31.6	31.4	31.2	31.0	30.9	30.7	30.6	30.4	30.3	30.2	30.1	30.0	29.8	29.7
FDEC, 2016 July	31.7	31.5	31.3	31.2	31.0	30.8	30.7	30.6	30.4	30.3	30.2	30.1	29.9	29.8
Household Size														
FDEC, 2015 December	2.544	2.543	2.543	2.542	2.542	2.541	2.540	2.540	2.539	2.539	2.538	2.537	2.537	2.536
FDEC, 2016 July	2.534	2.534	2.533	2.532	2.532	2.531	2.531	2.530	2.530	2.529	2.529	2.528	2.528	2.527
Household Size Growth Rate														
FDEC, 2015 December	-0.09	-0.09	-0.09	-0.09	-0.09	-0.09	-0.09	-0.09	-0.10	-0.10	-0.10	-0.10	-0.10	-0.10
FDEC, 2016 July	-0.09	-0.09	-0.09	-0.09	-0.08	-0.08	-0.08	-0.08	-0.08	-0.08	-0.08	-0.08	-0.08	-0.08
Net Migration														
FDEC, 2015 December	68.6	68.3	67.9	67.6	67.4	67.1	66.9	66.7	66.5	66.3	66.0	65.8	65.7	65.5
FDEC, 2016 July	68.8	68.5	68.1	67.8	67.5	67.3	67.0	66.9	66.7	66.4	66.1	65.8	65.5	65.2
Births														
FDEC, 2015 December	61.6	61.7	61.8	61.9	62.0	62.1	62.1	62.2	62.2	62.3	62.4	62.5	62.6	62.7
FDEC, 2016 July	61.9	62.2	62.4	62.6	62.8	63.0	63.1	63.3	63.4	63.6	63.8	64.0	64.1	64.2
Deaths														
FDEC, 2015 December	54.8	55.0	55.3	55.6	55.9	56.1	56.4	56.7	57.0	57.3	57.6	57.9	58.2	58.5
FDEC, 2016 July	55.3	55.6	55.9	56.1	56.4	56.7	56.9	57.1	57.4	57.6	57.9	58.1	58.4	58.7
Net Natural Increase														
FDEC, 2015 December	6.8	6.6	6.5	6.3	6.2	6.0	5.7	5.5	5.2	5.0	4.8	4.6	4.4	4.1
FDEC, 2016 July	6.7	6.6	6.6	6.5	6.4	6.3	6.2	6.1	6.0	6.0	5.9	5.8	5.7	5.6

Quarterly Data Table

	<u>2024-1</u>	<u>2024-2</u>	<u>2024-3</u>	<u>2024-4</u>	<u>2025-1</u>	<u>2025-2</u>	<u>2025-3</u>	<u>2025-4</u>	<u>2026-1</u>	<u>2026-2</u>
Population										
FDEC, 2015 December	22,493.1	22,561.9	22,630.2	22,698.2	22,765.8	22,833.0	22,899.8	22,966.3	23,032.4	23,098.1
FDEC, 2016 July	22,501.7	22,571.7	22,641.2	22,710.3	22,778.9	22,846.9	22,914.4	22,981.4	23,048.0	23,114.3
Population Growth Rate										
FDEC, 2015 December	1.24	1.23	1.22	1.21	1.20	1.19	1.18	1.17	1.16	1.15
FDEC, 2016 July	1.26	1.25	1.24	1.23	1.21	1.20	1.19	1.18	1.16	1.16
Net Change in Population										
FDEC, 2015 December	69.2	68.8	68.4	68.0	67.6	67.2	66.8	66.5	66.1	65.7
FDEC, 2016 July	70.3	69.9	69.5	69.1	68.6	68.0	67.5	67.0	66.6	66.3
Households										
FDEC, 2015 December	8,871.8	8,901.3	8,930.6	8,959.8	8,988.9	9,017.9	9,046.8	9,075.6	9,104.1	9,132.4
FDEC, 2016 July	8,905.1	8,934.6	8,964.0	8,993.4	9,022.6	9,051.7	9,080.7	9,109.6	9,138.2	9,166.6
Household Growth Rate										
FDEC, 2015 December	1.34	1.33	1.32	1.31	1.31	1.30	1.29	1.28	1.26	1.25
FDEC, 2016 July	1.34	1.33	1.32	1.31	1.31	1.30	1.29	1.28	1.26	1.25
Net Change in Households										
FDEC, 2015 December	29.6	29.4	29.3	29.2	29.1	29.0	28.9	28.8	28.6	28.3
FDEC, 2016 July	29.7	29.6	29.4	29.3	29.2	29.1	29.0	28.9	28.7	28.4
Household Size										
FDEC, 2015 December	2.535	2.535	2.534	2.533	2.533	2.532	2.531	2.531	2.530	2.529
FDEC, 2016 July	2.527	2.526	2.526	2.525	2.525	2.524	2.523	2.523	2.522	2.522
Household Size Growth Rate										
FDEC, 2015 December	-0.10	-0.10	-0.10	-0.11	-0.11	-0.11	-0.11	-0.11	-0.11	-0.10
FDEC, 2016 July	-0.08	-0.08	-0.08	-0.09	-0.09	-0.10	-0.10	-0.10	-0.10	-0.09
Net Migration										
FDEC, 2015 December	65.3	65.1	65.0	64.8	64.7	64.5	64.4	64.3	64.2	64.1
FDEC, 2016 July	65.0	64.7	64.5	64.2	63.9	63.5	63.2	63.0	62.8	62.7
Births										
FDEC, 2015 December	62.8	62.9	63.0	63.1	63.3	63.4	63.6	63.7	63.9	64.1
FDEC, 2016 July	64.3	64.4	64.5	64.6	64.7	64.8	64.8	64.9	65.0	65.1
Deaths										
FDEC, 2015 December	58.9	59.2	59.6	60.0	60.4	60.8	61.2	61.6	62.0	62.4
FDEC, 2016 July	58.9	59.2	59.4	59.7	60.0	60.3	60.6	60.9	61.2	61.5
Net Natural Increase										
FDEC, 2015 December	3.9	3.7	3.4	3.2	2.9	2.7	2.4	2.2	1.9	1.6
FDEC, 2016 July	5.4	5.2	5.1	4.9	4.7	4.5	4.3	4.0	3.8	3.6

Fiscal Year Data Table

	<u>1990-91</u>	<u>1991-92</u>	<u>1992-93</u>	<u>1993-94</u>	<u>1994-95</u>	<u>1995-96</u>	<u>1996-97</u>	<u>1997-98</u>	<u>1998-99</u>	<u>1999-00</u>	<u>2000-01</u>	<u>2001-02</u>	<u>2002-03</u>	<u>2003-04</u>	<u>2004-05</u>
Population															
FDEC, 2015 December	13,178.0	13,442.6	13,670.0	13,962.2	14,264.9	14,550.7	14,859.1	15,158.3	15,488.4	15,881.7	16,228.0	16,551.2	16,892.0	17,273.8	17,677.3
FDEC, 2016 July	13,178.0	13,442.6	13,670.0	13,962.2	14,264.9	14,550.7	14,859.1	15,158.3	15,488.4	15,881.7	16,228.0	16,551.2	16,892.0	17,273.8	17,677.3
Growth Rate															
FDEC, 2015 December	2.42	2.01	1.69	2.14	2.17	2.00	2.12	2.01	2.18	2.54	2.18	1.99	2.06	2.26	2.34
FDEC, 2016 July	2.42	2.01	1.69	2.14	2.17	2.00	2.12	2.01	2.18	2.54	2.18	1.99	2.06	2.26	2.34
Net Change in Population															
FDEC, 2015 December	311.4	264.6	227.4	292.2	302.8	285.8	308.4	299.2	330.1	393.2	346.4	323.2	340.9	381.8	403.5
FDEC, 2016 July	311.4	264.6	227.4	292.2	302.8	285.8	308.4	299.2	330.1	393.2	346.4	323.2	340.9	381.8	403.5
Households															
FDEC, 2015 December	5,230.7	5,335.4	5,424.2	5,538.0	5,655.6	5,766.7	5,887.3	6,005.5	6,137.4	6,296.9	6,436.4	6,565.8	6,702.3	6,855.1	7,016.4
FDEC, 2016 July	5,230.7	5,335.4	5,424.2	5,538.0	5,655.6	5,766.7	5,887.3	6,005.5	6,137.4	6,296.9	6,436.4	6,565.8	6,702.3	6,855.1	7,016.4
Growth Rate															
FDEC, 2015 December	2.44	2.00	1.66	2.10	2.12	1.96	2.09	2.01	2.20	2.60	2.22	2.01	2.08	2.28	2.35
FDEC, 2016 July	2.44	2.00	1.66	2.10	2.12	1.96	2.09	2.01	2.20	2.60	2.22	2.01	2.08	2.28	2.35
Net Change in Households															
FDEC, 2015 December	124.7	104.7	88.8	113.8	117.7	111.1	120.6	118.1	132.0	159.5	139.5	129.3	136.5	152.8	161.3
FDEC, 2016 July	124.7	104.7	88.8	113.8	117.7	111.1	120.6	118.1	132.0	159.5	139.5	129.3	136.5	152.8	161.3
Household Size															
FDEC, 2015 December	2.519	2.520	2.520	2.521	2.522	2.523	2.524	2.524	2.524	2.522	2.521	2.521	2.520	2.520	2.519
FDEC, 2016 July	2.519	2.520	2.520	2.521	2.522	2.523	2.524	2.524	2.524	2.522	2.521	2.521	2.520	2.520	2.519
Growth Rate															
FDEC, 2015 December	-0.02	0.01	0.03	0.04	0.04	0.04	0.03	0.01	-0.02	-0.06	-0.03	-0.02	-0.02	-0.02	-0.02
FDEC, 2016 July	-0.02	0.01	0.03	0.04	0.04	0.04	0.03	0.01	-0.02	-0.06	-0.03	-0.02	-0.02	-0.02	-0.02
Net Migration															
FDEC, 2015 December	248.4	208.9	177.4	246.6	262.7	249.6	270.9	260.5	293.9	355.3	306.0	285.5	300.4	335.0	351.1
FDEC, 2016 July	248.4	208.9	177.4	246.6	262.7	249.6	270.9	260.5	293.9	355.3	306.0	285.5	300.4	335.0	351.1
Births															
FDEC, 2015 December	197.0	192.2	192.0	191.7	189.4	188.6	190.7	194.0	196.0	200.5	205.4	205.4	208.5	215.0	221.8
FDEC, 2016 July	197.0	192.2	192.0	191.7	189.4	188.6	190.7	194.0	196.0	200.5	205.4	205.4	208.5	215.0	221.8
Deaths															
FDEC, 2015 December	134.0	136.5	142.0	146.1	149.3	152.4	153.1	155.3	159.8	162.5	165.0	167.7	168.1	168.3	169.4
FDEC, 2016 July	134.0	136.5	142.0	146.1	149.3	152.4	153.1	155.3	159.8	162.5	165.0	167.7	168.1	168.3	169.4
Net Natural Increase															
FDEC, 2015 December	63.0	55.7	50.0	45.6	40.1	36.2	37.5	38.8	36.2	38.0	40.3	37.7	40.4	46.7	52.4
FDEC, 2016 July	63.0	55.7	50.0	45.6	40.1	36.2	37.5	38.8	36.2	38.0	40.3	37.7	40.4	46.7	52.4

Fiscal Year Data Table

	<u>2005-06</u>	<u>2006-07</u>	<u>2007-08</u>	<u>2008-09</u>	<u>2009-10</u>	<u>2010-11</u>	<u>2011-12</u>	<u>2012-13</u>	<u>2013-14</u>	<u>2014-15</u>	<u>2015-16</u>	<u>2016-17</u>	<u>2017-18</u>	<u>2018-19</u>	<u>2019-20</u>
Population															
FDEC, 2015 December	18,062.2	18,378.2	18,578.9	18,671.4	18,770.4	18,878.6	19,029.3	19,212.4	19,441.7	19,736.4	20,052.0	20,367.1	20,679.9	20,989.1	21,295.7
FDEC, 2016 July	18,062.2	18,378.2	18,578.9	18,671.4	18,770.4	18,878.6	19,029.3	19,212.4	19,441.7	19,736.5	20,050.9	20,364.7	20,677.2	20,986.4	21,293.1
Growth Rate															
FDEC, 2015 December	2.18	1.75	1.09	0.50	0.53	0.58	0.80	0.96	1.19	1.52	1.60	1.57	1.54	1.50	1.46
FDEC, 2016 July	2.18	1.75	1.09	0.50	0.53	0.58	0.80	0.96	1.19	1.52	1.59	1.56	1.53	1.50	1.46
Net Change in Population															
FDEC, 2015 December	384.9	316.0	200.7	92.5	99.0	108.2	150.7	183.0	229.4	294.7	315.6	315.1	312.8	309.2	306.6
FDEC, 2016 July	384.9	316.0	200.7	92.5	99.0	108.2	150.7	183.0	229.3	294.8	314.4	313.8	312.5	309.2	306.7
Households															
FDEC, 2015 December	7,170.9	7,288.9	7,357.1	7,383.0	7,411.4	7,450.9	7,517.2	7,592.9	7,654.3	7,740.8	7,856.4	7,981.6	8,110.0	8,238.5	8,366.5
FDEC, 2016 July	7,170.9	7,288.9	7,357.1	7,383.0	7,411.4	7,450.9	7,517.2	7,593.1	7,653.9	7,753.9	7,882.2	8,011.1	8,140.4	8,269.3	8,397.9
Growth Rate															
FDEC, 2015 December	2.20	1.65	0.93	0.35	0.38	0.53	0.89	1.01	0.81	1.13	1.49	1.59	1.61	1.58	1.55
FDEC, 2016 July	2.20	1.65	0.93	0.35	0.38	0.53	0.89	1.01	0.80	1.31	1.65	1.64	1.61	1.58	1.55
Net Change in Households															
FDEC, 2015 December	154.5	118.1	68.1	26.0	28.3	39.5	66.3	75.7	61.4	86.4	115.7	125.2	128.4	128.5	128.0
FDEC, 2016 July	154.5	118.1	68.1	26.0	28.3	39.6	66.3	75.9	60.8	100.1	128.3	128.9	129.3	128.9	128.6
Household Size															
FDEC, 2015 December	2.519	2.521	2.525	2.529	2.533	2.534	2.531	2.530	2.540	2.550	2.552	2.552	2.550	2.548	2.545
FDEC, 2016 July	2.519	2.521	2.525	2.529	2.533	2.534	2.531	2.530	2.540	2.545	2.544	2.542	2.540	2.538	2.536
Growth Rate															
FDEC, 2015 December	-0.02	0.10	0.16	0.14	0.15	0.04	-0.09	-0.04	0.38	0.38	0.10	-0.02	-0.07	-0.09	-0.09
FDEC, 2016 July	-0.02	0.10	0.16	0.14	0.15	0.04	-0.09	-0.05	0.39	0.21	-0.06	-0.07	-0.08	-0.09	-0.09
Net Migration															
FDEC, 2015 December	322.9	245.0	133.7	36.3	52.7	67.4	111.9	147.1	194.2	261.5	284.9	284.8	282.6	279.6	278.3
FDEC, 2016 July	322.9	245.0	133.7	36.3	52.7	67.4	111.9	147.1	194.3	261.2	283.4	283.8	283.0	279.8	278.4
Births															
FDEC, 2015 December	232.1	239.3	236.0	226.4	217.4	213.5	212.9	213.8	217.4	222.1	226.7	232.0	237.2	241.4	244.6
FDEC, 2016 July	232.1	239.3	236.0	226.4	217.4	213.5	212.9	213.8	217.5	221.7	226.1	231.0	236.0	241.4	246.0
Deaths															
FDEC, 2015 December	170.1	168.3	169.0	170.2	171.1	172.7	174.1	177.8	182.3	188.9	196.1	201.7	207.0	211.8	216.4
FDEC, 2016 July	170.1	168.3	169.0	170.2	171.1	172.7	174.1	177.8	182.4	188.2	195.0	201.1	206.4	212.1	217.7
Net Natural Increase															
FDEC, 2015 December	62.0	71.0	67.0	56.2	46.3	40.8	38.8	36.0	35.1	33.2	30.7	30.3	30.2	29.6	28.3
FDEC, 2016 July	62.0	71.0	67.0	56.2	46.3	40.8	38.8	36.0	35.1	33.6	31.0	29.9	29.6	29.4	28.3

Fiscal Year Data Table

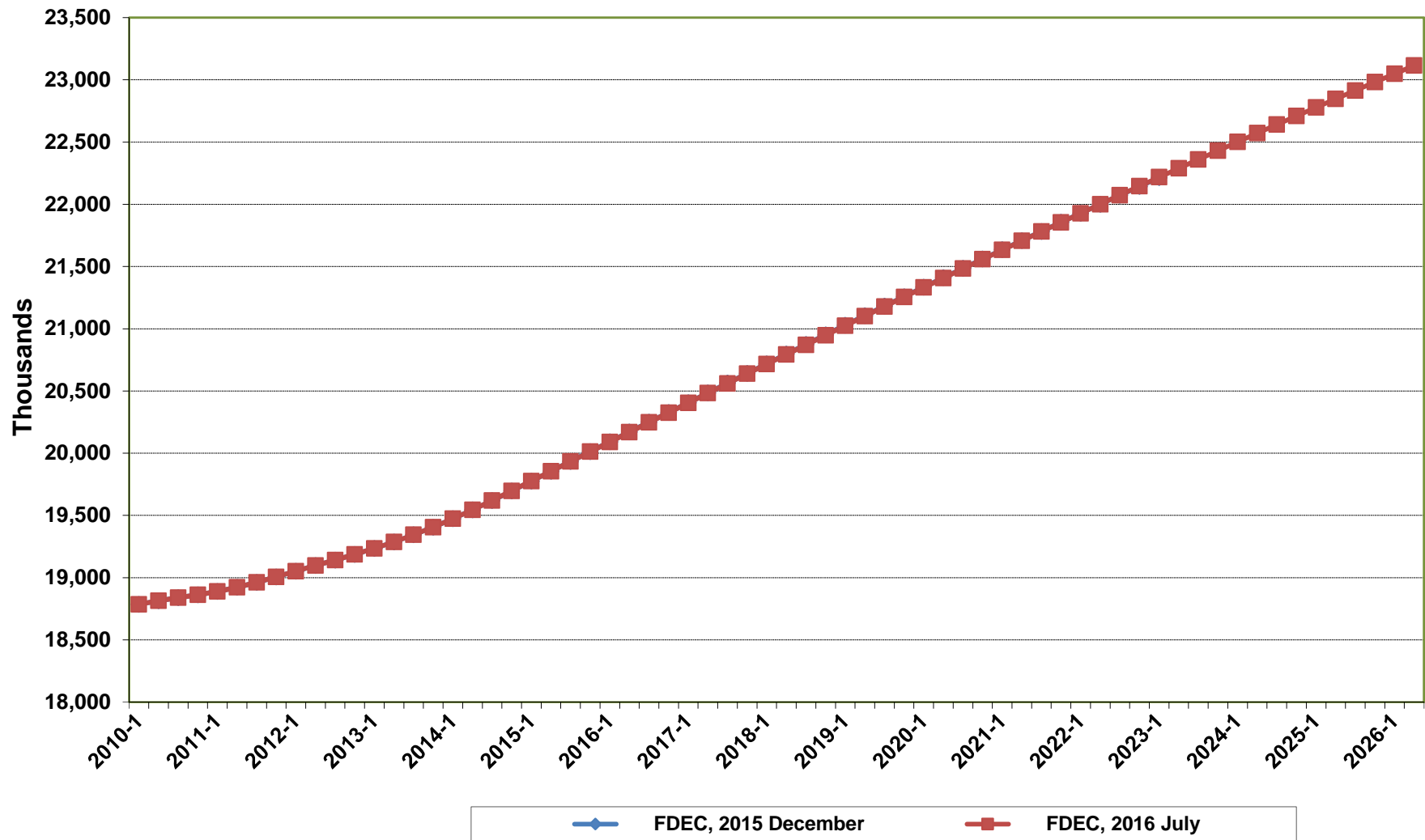
	<u>2020-21</u>	<u>2021-22</u>	<u>2022-23</u>	<u>2023-24</u>	<u>2024-25</u>	<u>2025-26</u>
Population						
FDEC, 2015 December	21,597.3	21,891.4	22,178.3	22,458.3	22,731.8	22,999.2
FDEC, 2016 July	21,595.2	21,891.0	22,181.7	22,466.4	22,744.3	23,014.5
Growth Rate						
FDEC, 2015 December	1.42	1.36	1.31	1.26	1.22	1.18
FDEC, 2016 July	1.42	1.37	1.33	1.28	1.24	1.19
Net Change in Population						
FDEC, 2015 December	301.6	294.1	286.9	280.0	273.5	267.3
FDEC, 2016 July	302.0	295.9	290.7	284.7	277.9	270.2
Households						
FDEC, 2015 December	8,492.8	8,616.4	8,737.7	8,857.0	8,974.3	9,089.7
FDEC, 2016 July	8,524.6	8,648.6	8,770.4	8,890.2	9,007.9	9,123.8
Growth Rate						
FDEC, 2015 December	1.51	1.45	1.41	1.37	1.32	1.29
FDEC, 2016 July	1.51	1.45	1.41	1.37	1.32	1.29
Net Change in Households						
FDEC, 2015 December	126.3	123.5	121.3	119.3	117.3	115.4
FDEC, 2016 July	126.8	124.0	121.8	119.8	117.8	115.9
Household Size						
FDEC, 2015 December	2.543	2.541	2.538	2.536	2.533	2.530
FDEC, 2016 July	2.533	2.531	2.529	2.527	2.525	2.522
Growth Rate						
FDEC, 2015 December	-0.09	-0.09	-0.10	-0.10	-0.11	-0.11
FDEC, 2016 July	-0.09	-0.08	-0.08	-0.08	-0.09	-0.10
Net Migration						
FDEC, 2015 December	275.3	270.8	267.3	264.0	261.3	259.2
FDEC, 2016 July	275.7	270.8	266.9	262.8	258.9	254.6
Births						
FDEC, 2015 December	247.0	248.3	249.4	250.9	252.9	255.3
FDEC, 2016 July	249.1	252.2	254.7	257.0	258.5	259.8
Deaths						
FDEC, 2015 December	220.7	225.1	229.7	234.9	240.7	247.2
FDEC, 2016 July	222.8	227.1	231.0	235.1	239.4	244.1
Net Natural Increase						
FDEC, 2015 December	26.3	23.2	19.6	16.0	12.2	8.1
FDEC, 2016 July	26.3	25.1	23.7	21.9	19.1	15.7

Florida Demographic Estimating Conference

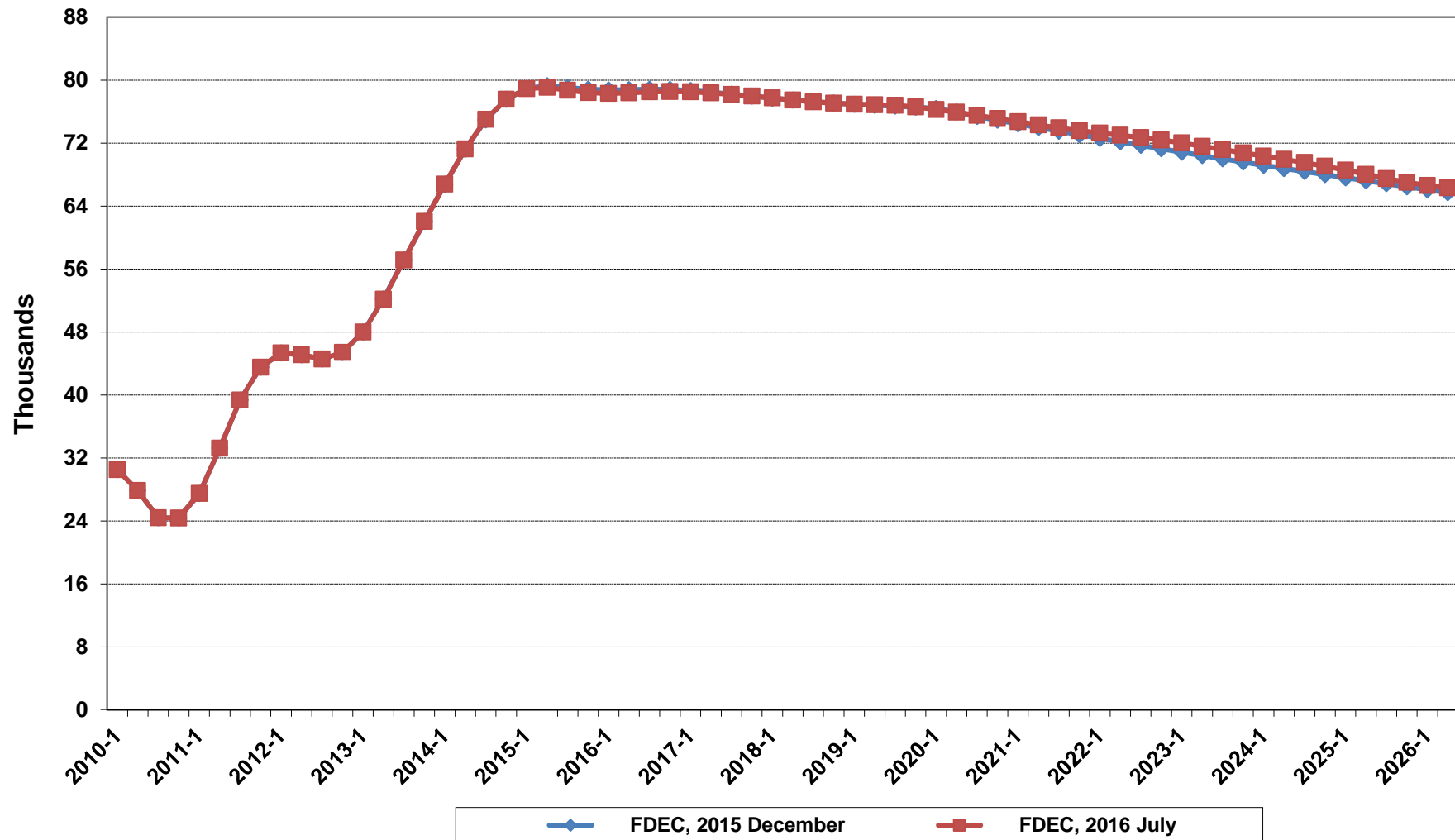
Charts
Conference Packet

July 6, 2016

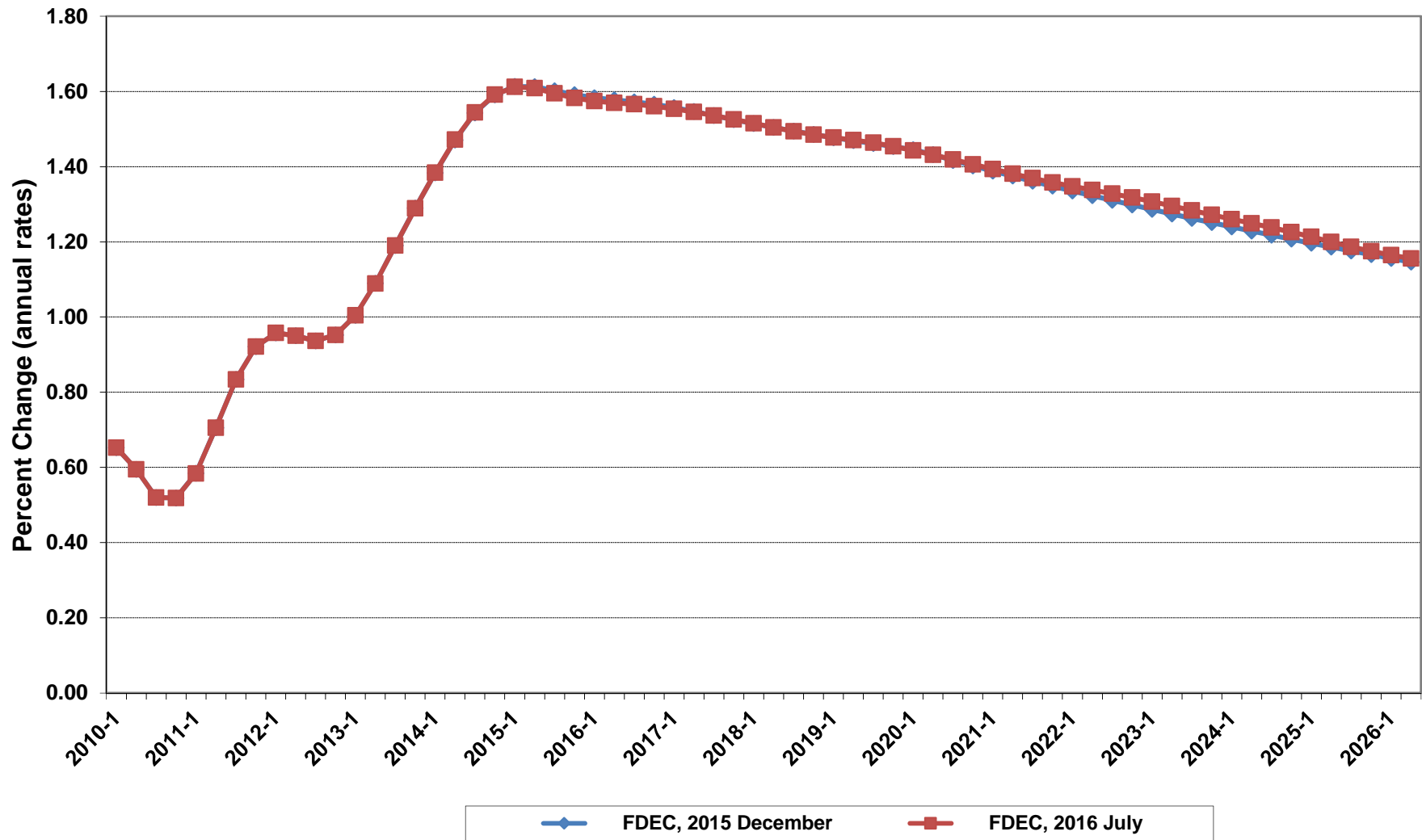
Florida Resident Population



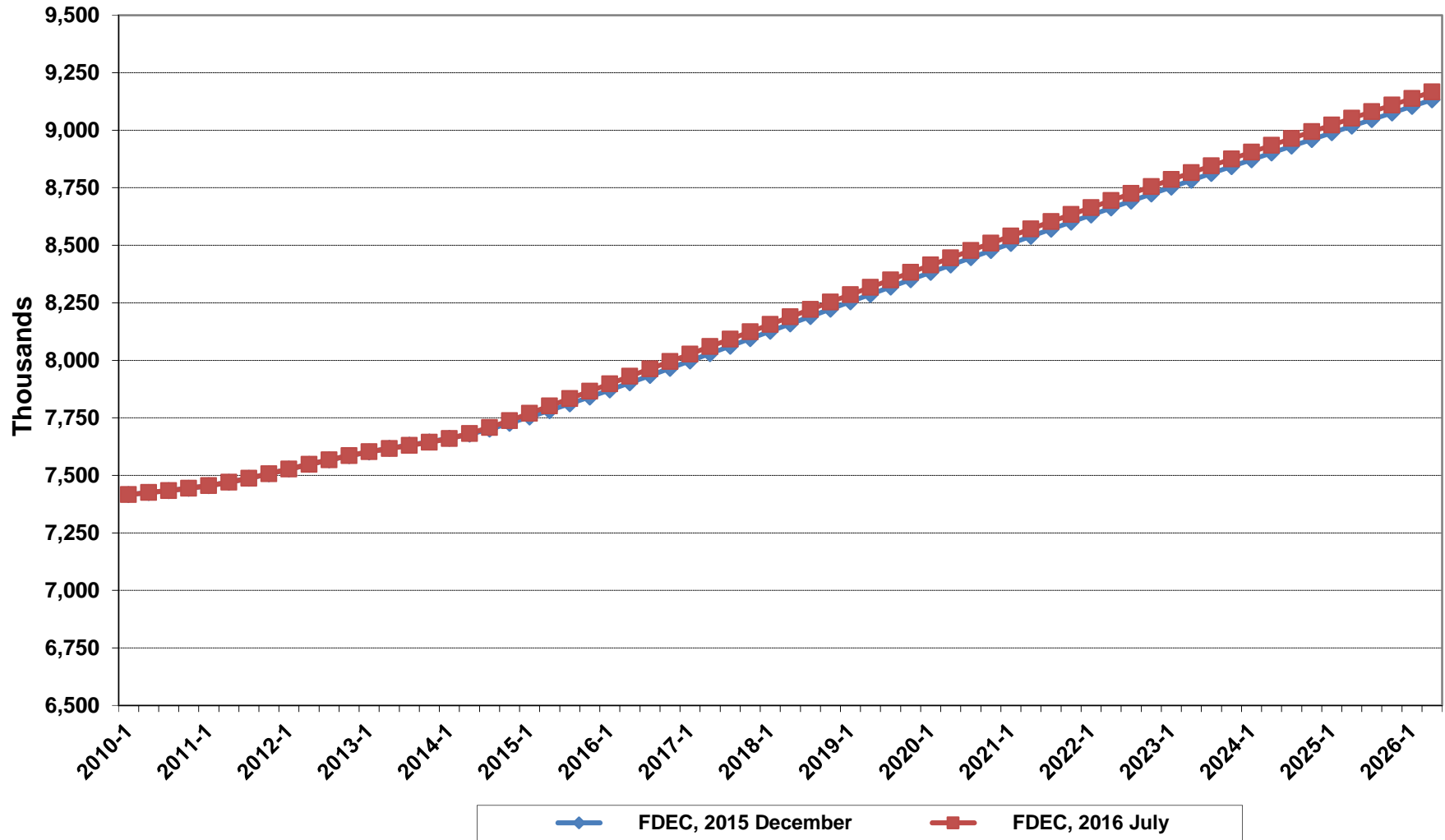
Net Change In Florida Resident Population



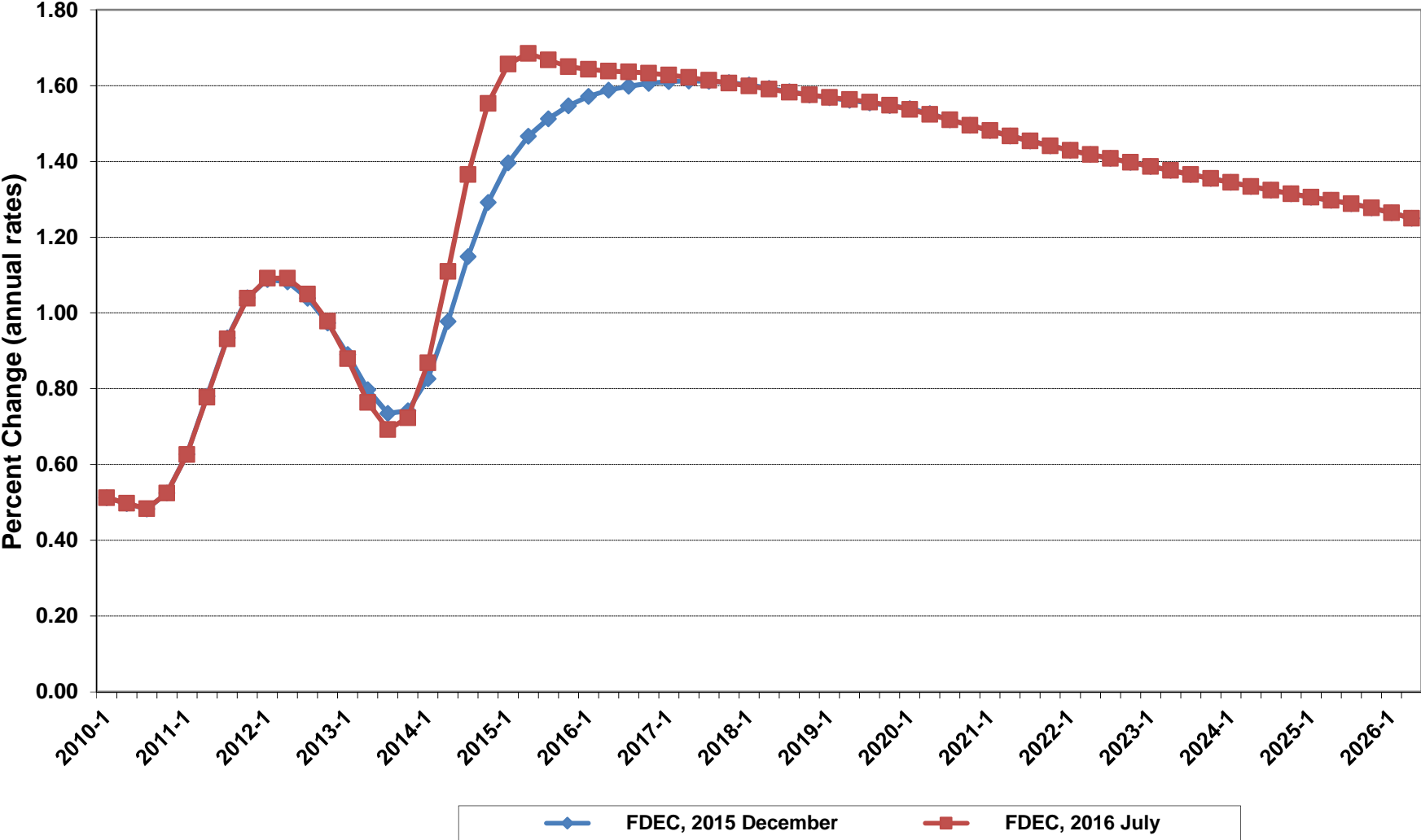
Growth In Florida Resident Population



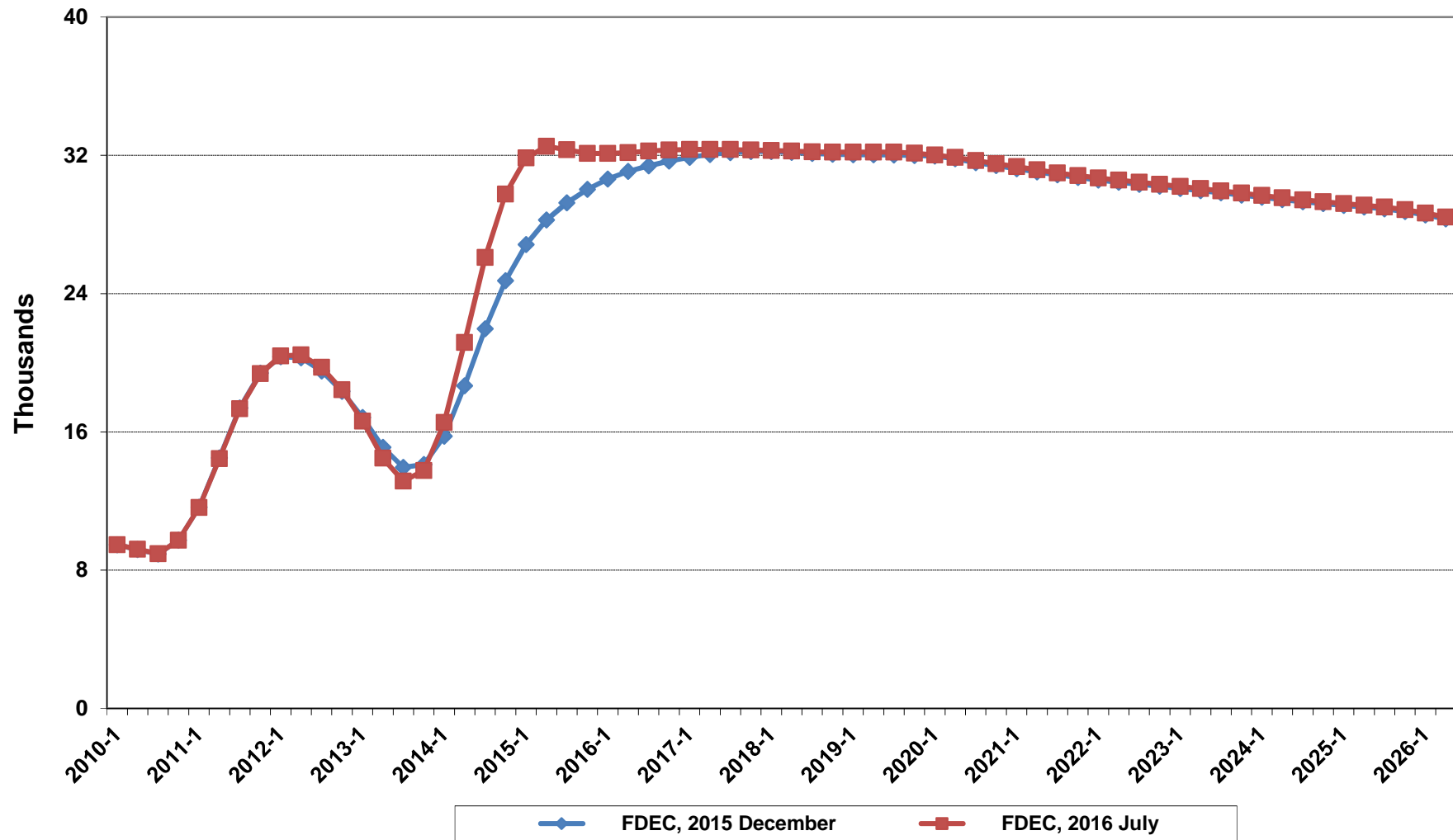
Florida Resident Households



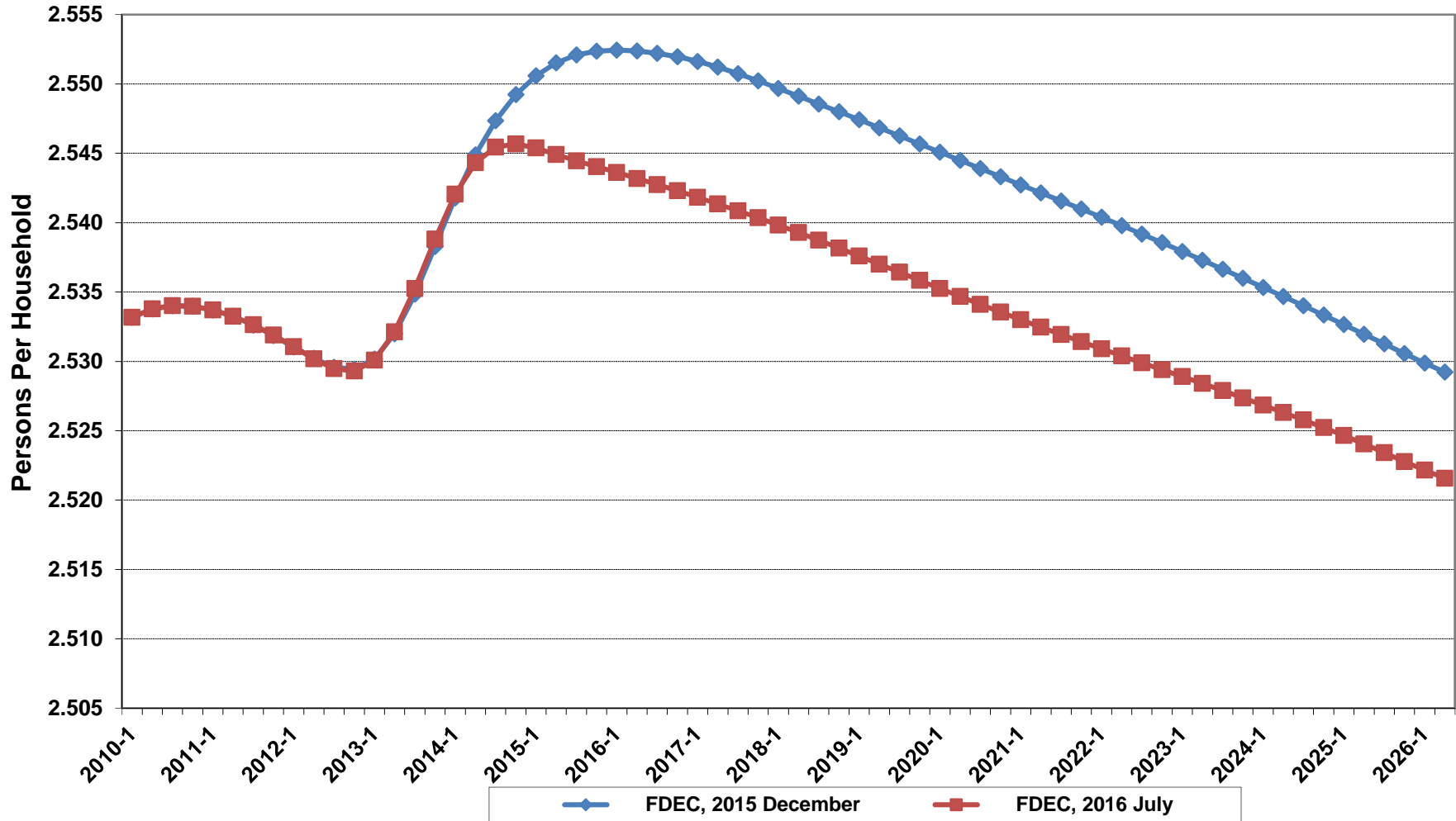
Growth In Florida Resident Households



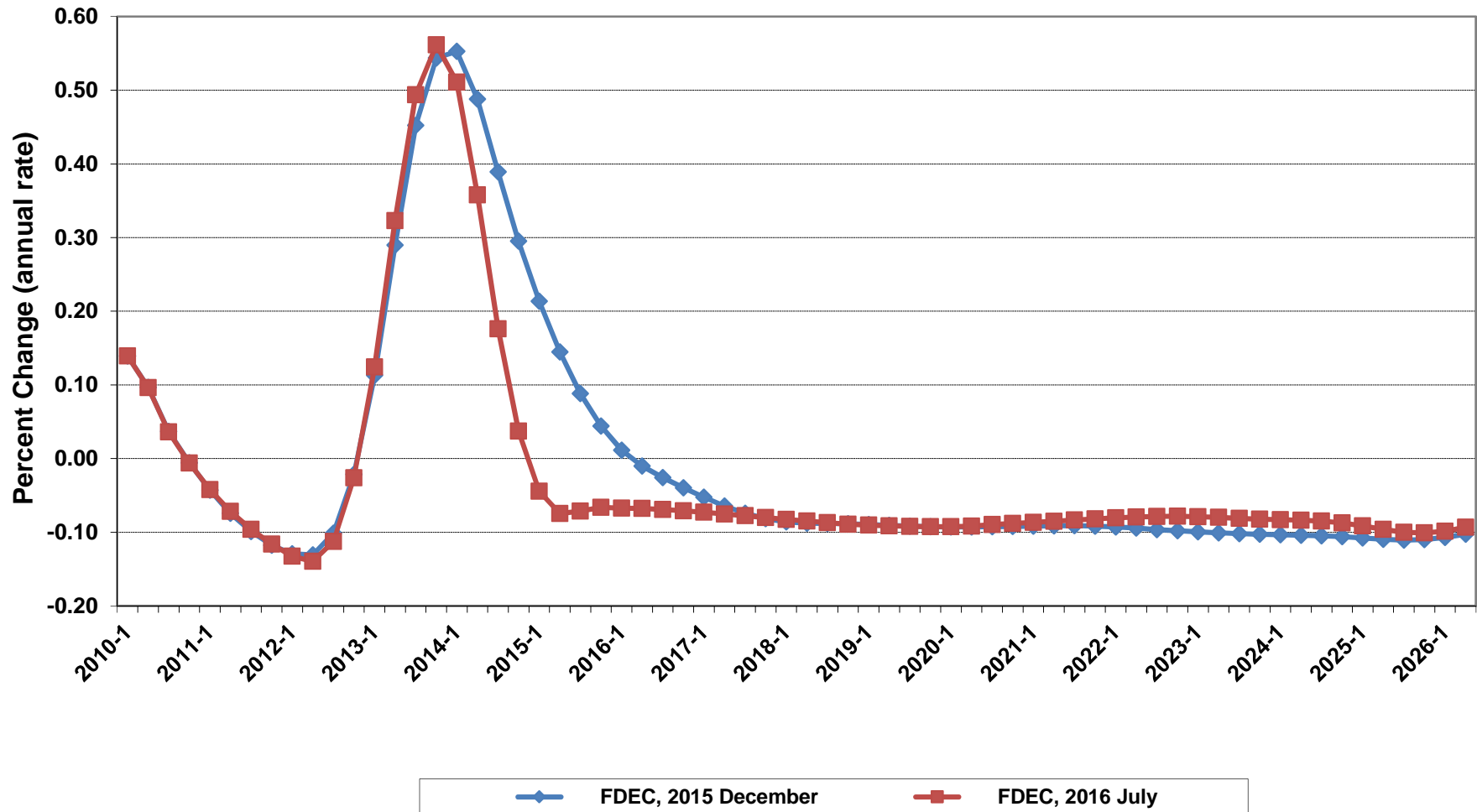
Net Change In Florida Resident Households



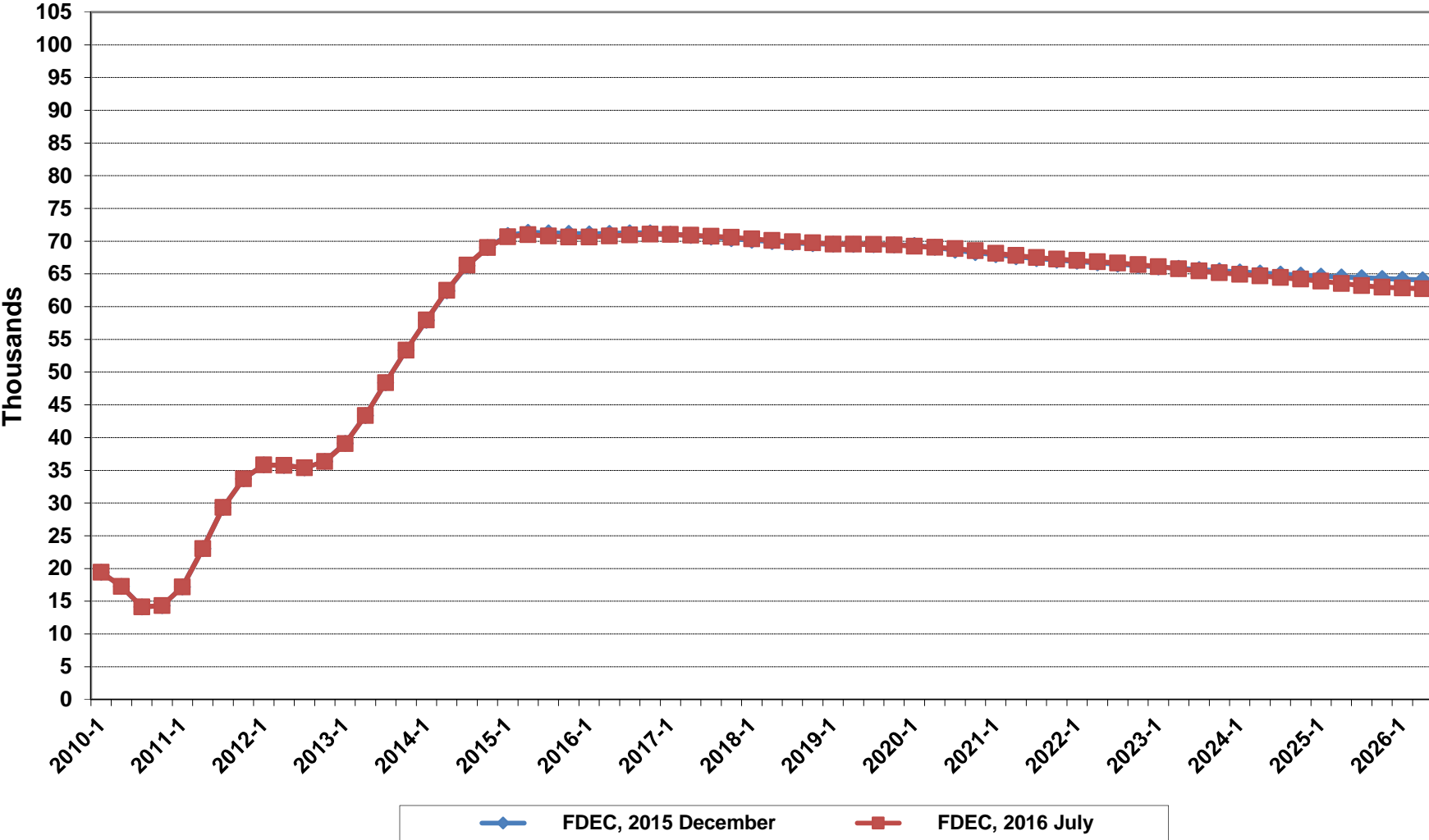
Florida Average Household Size



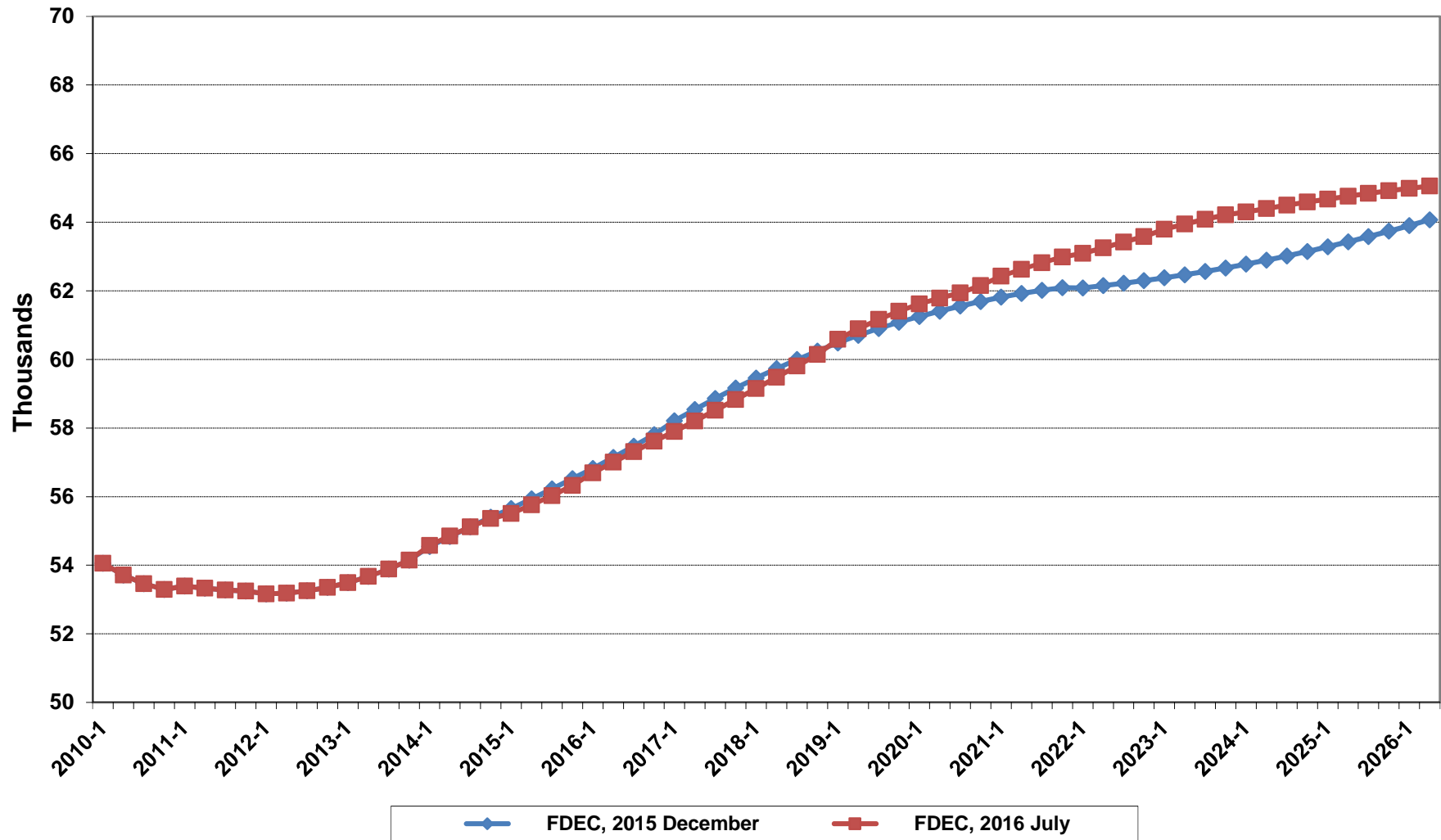
Growth In Florida Household Size



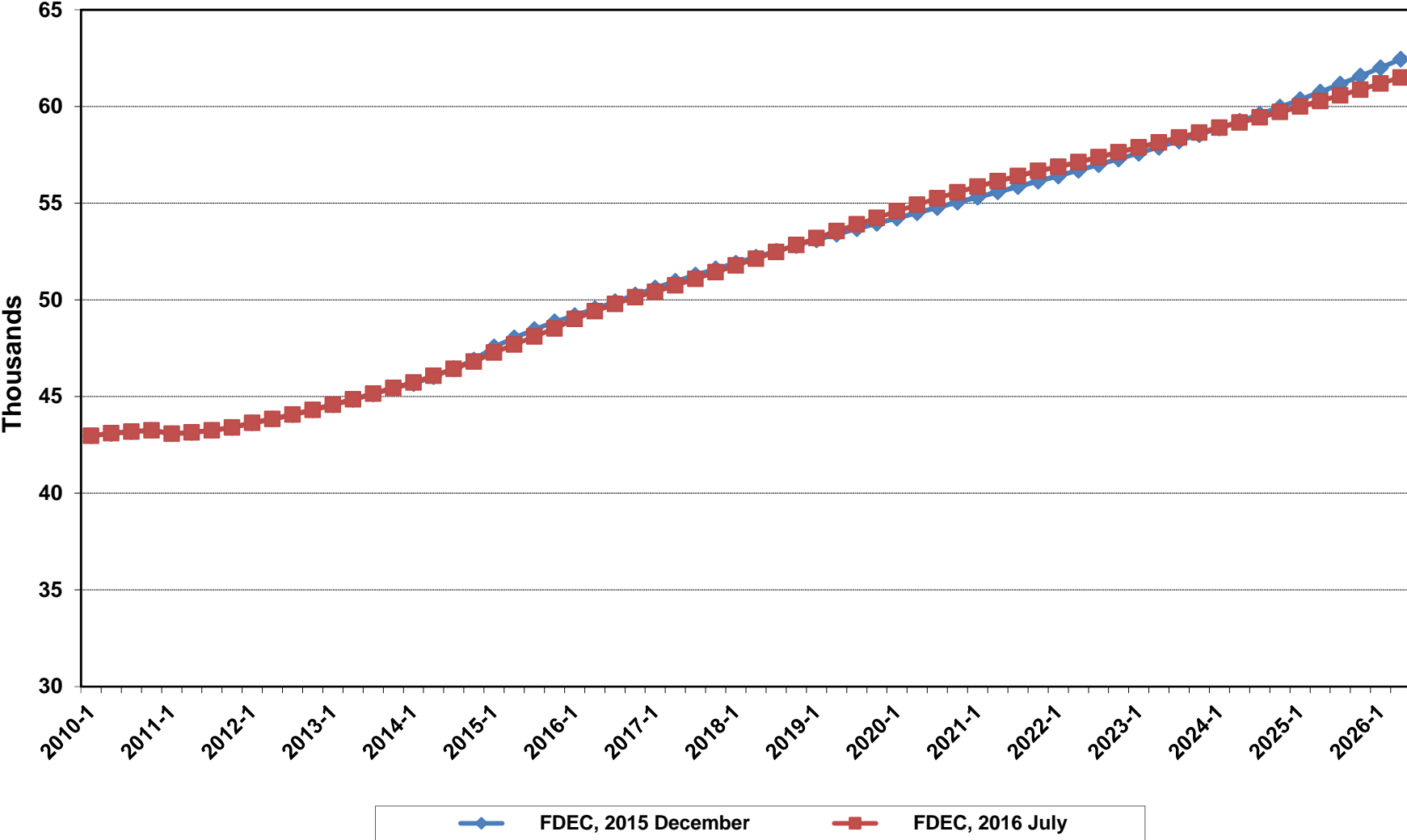
Florida Net Migration



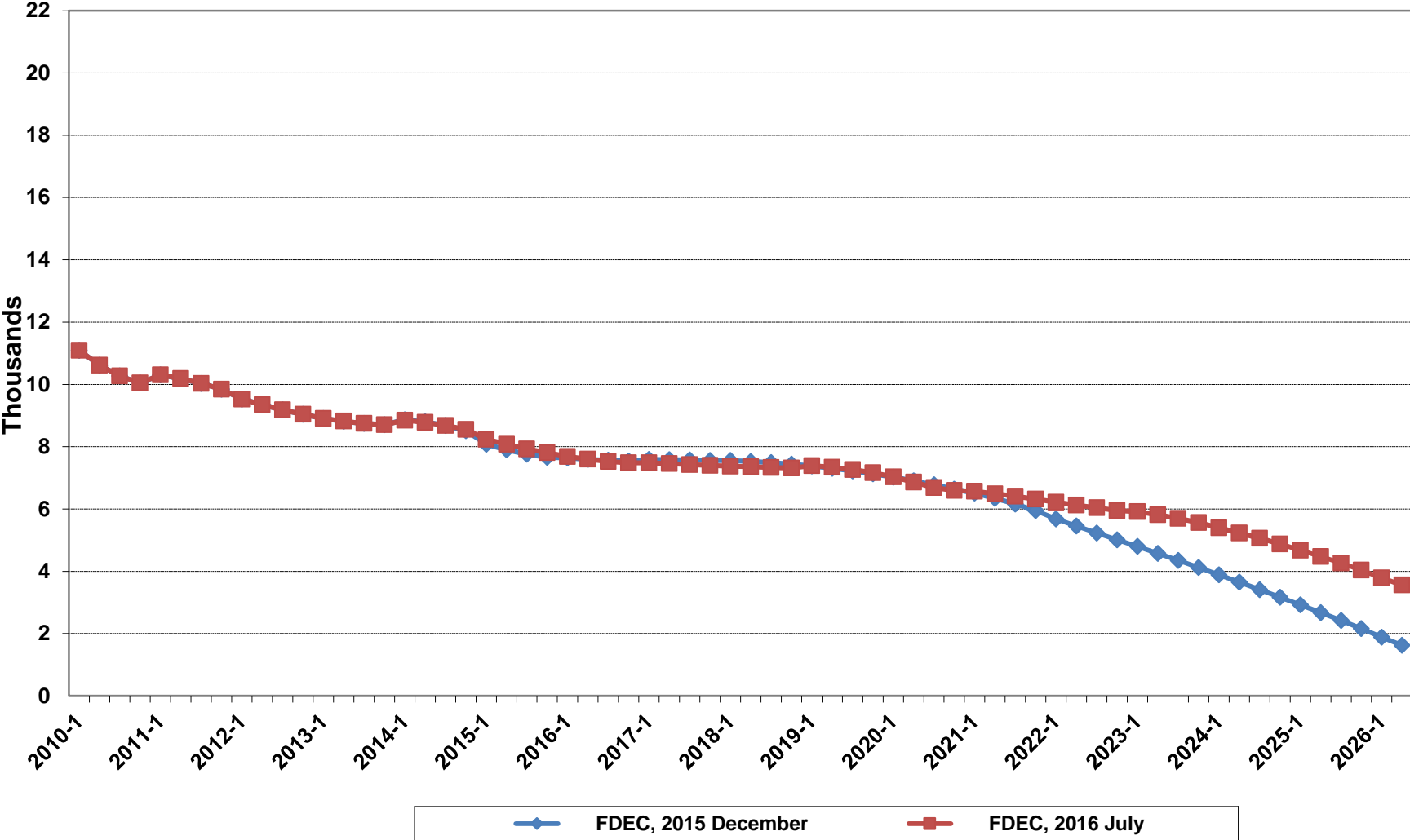
Florida Resident Births



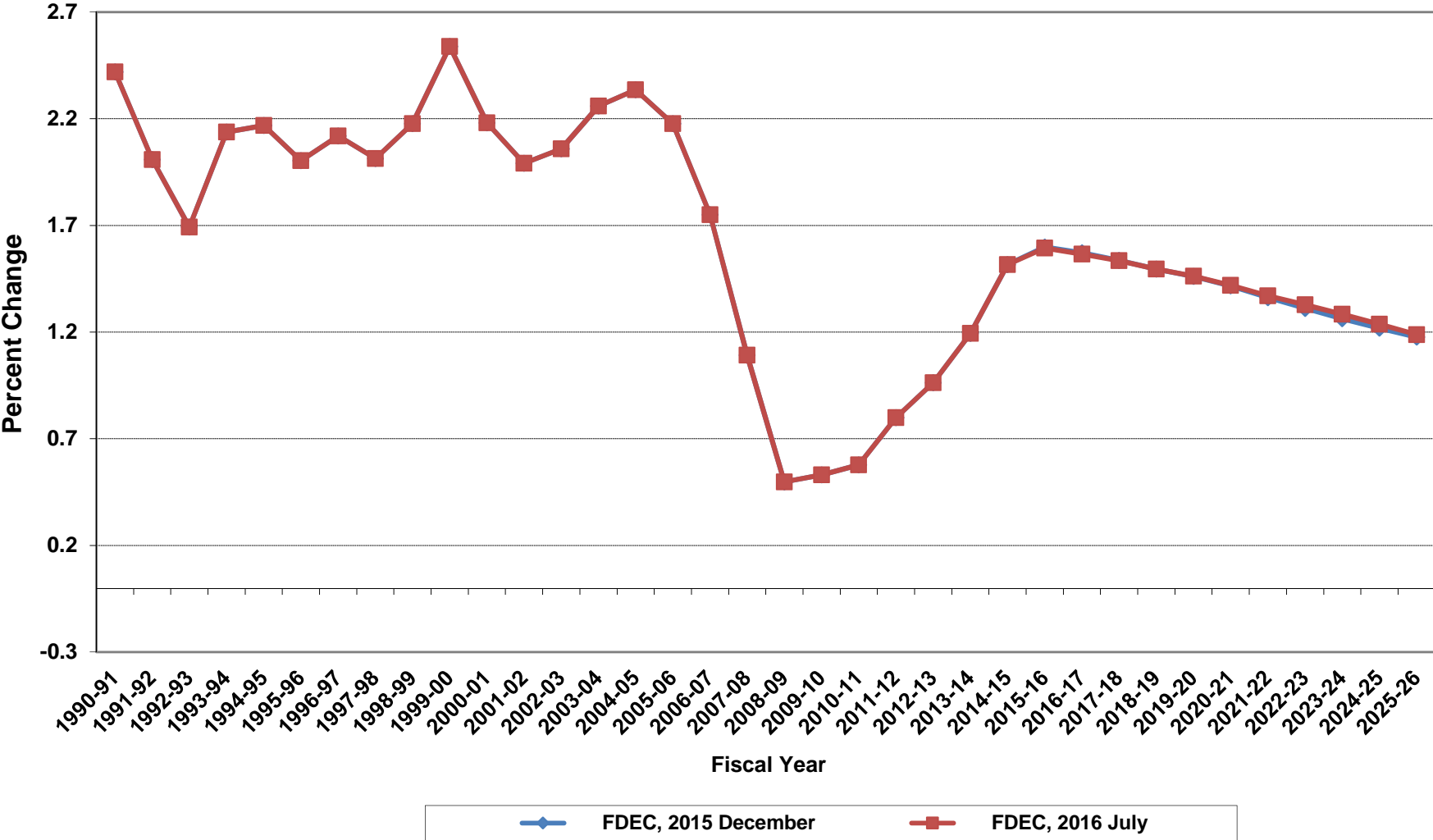
Florida Resident Deaths



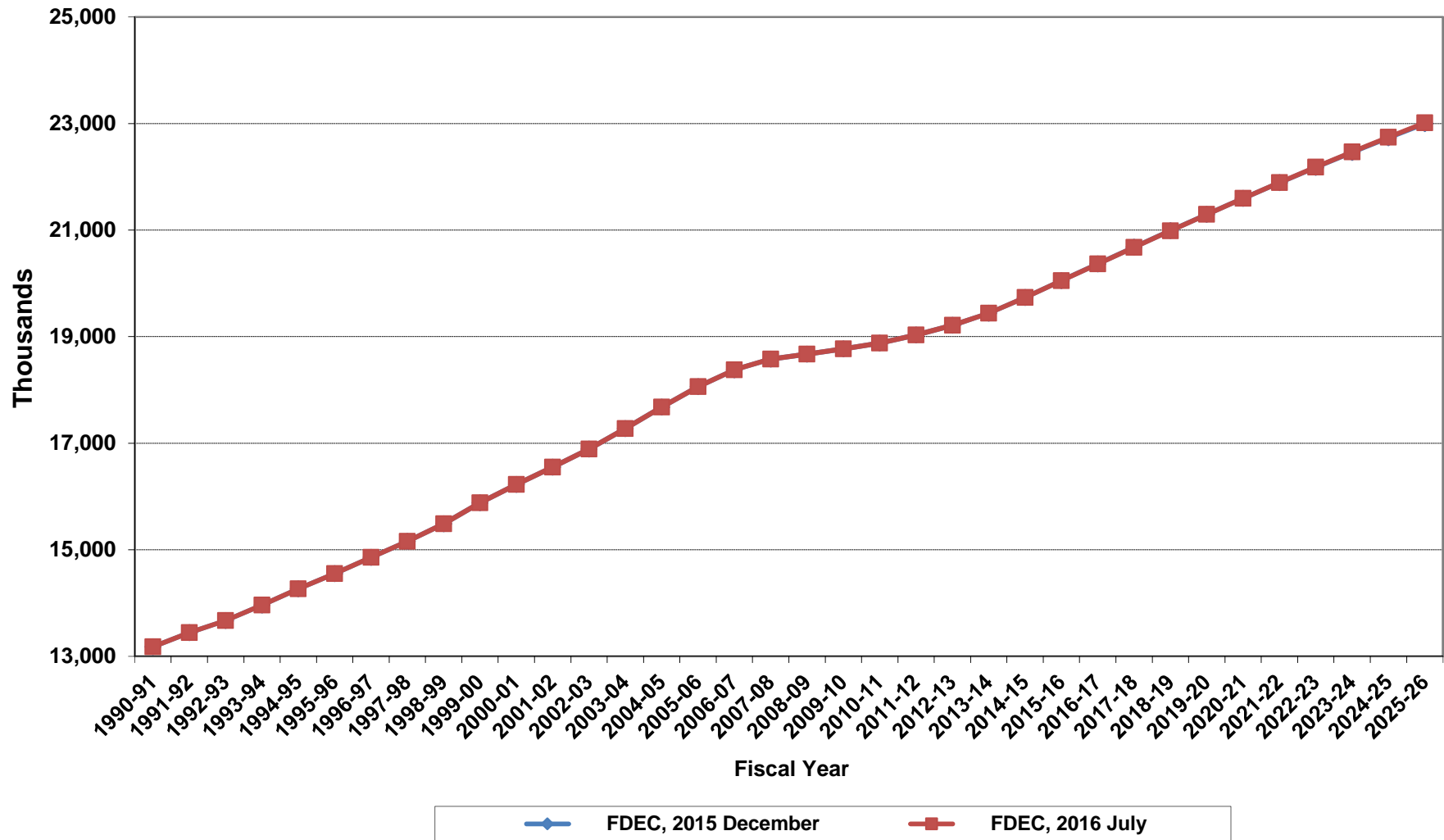
Florida Net Natural Increase



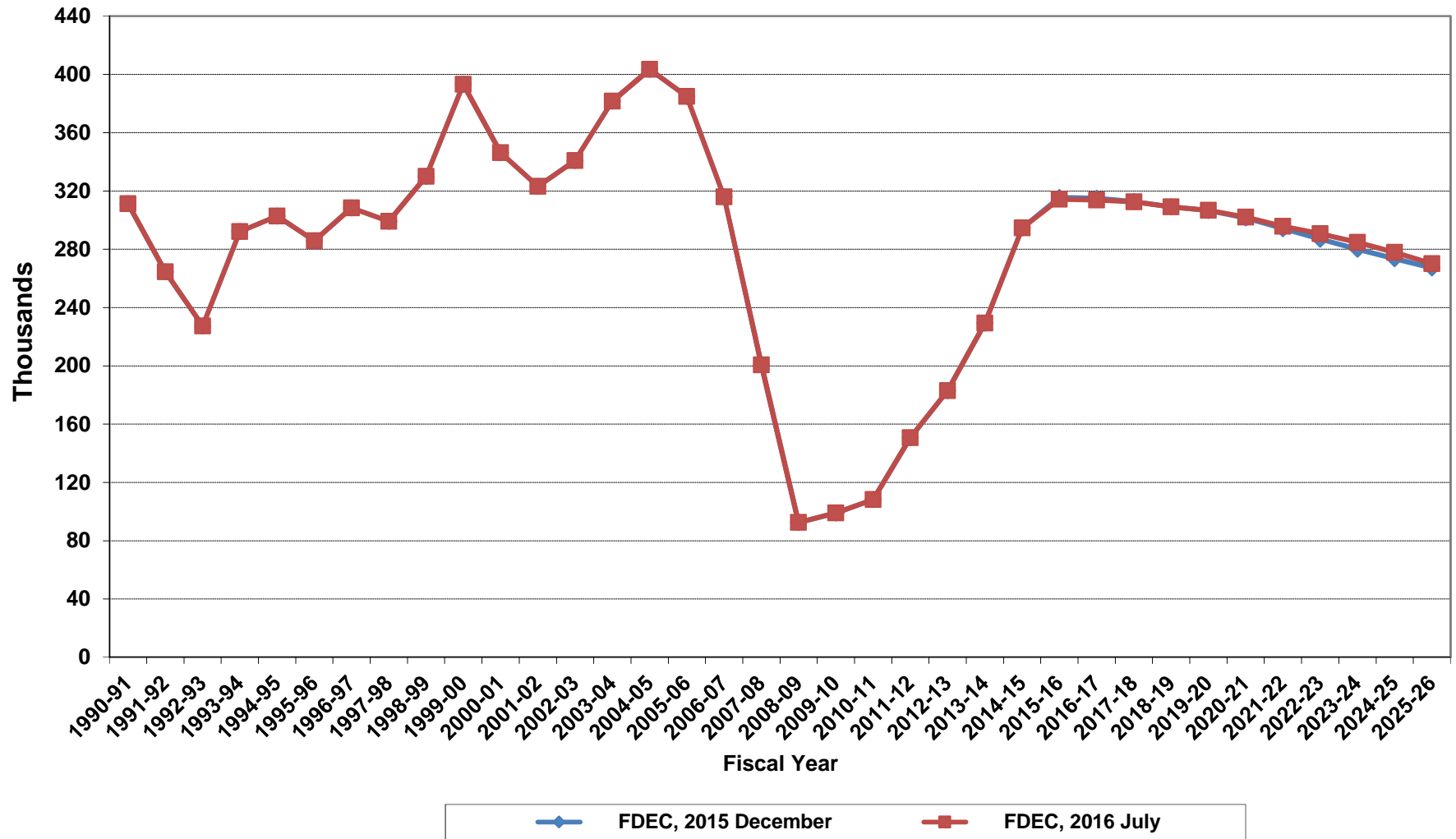
Growth In Florida Resident Population



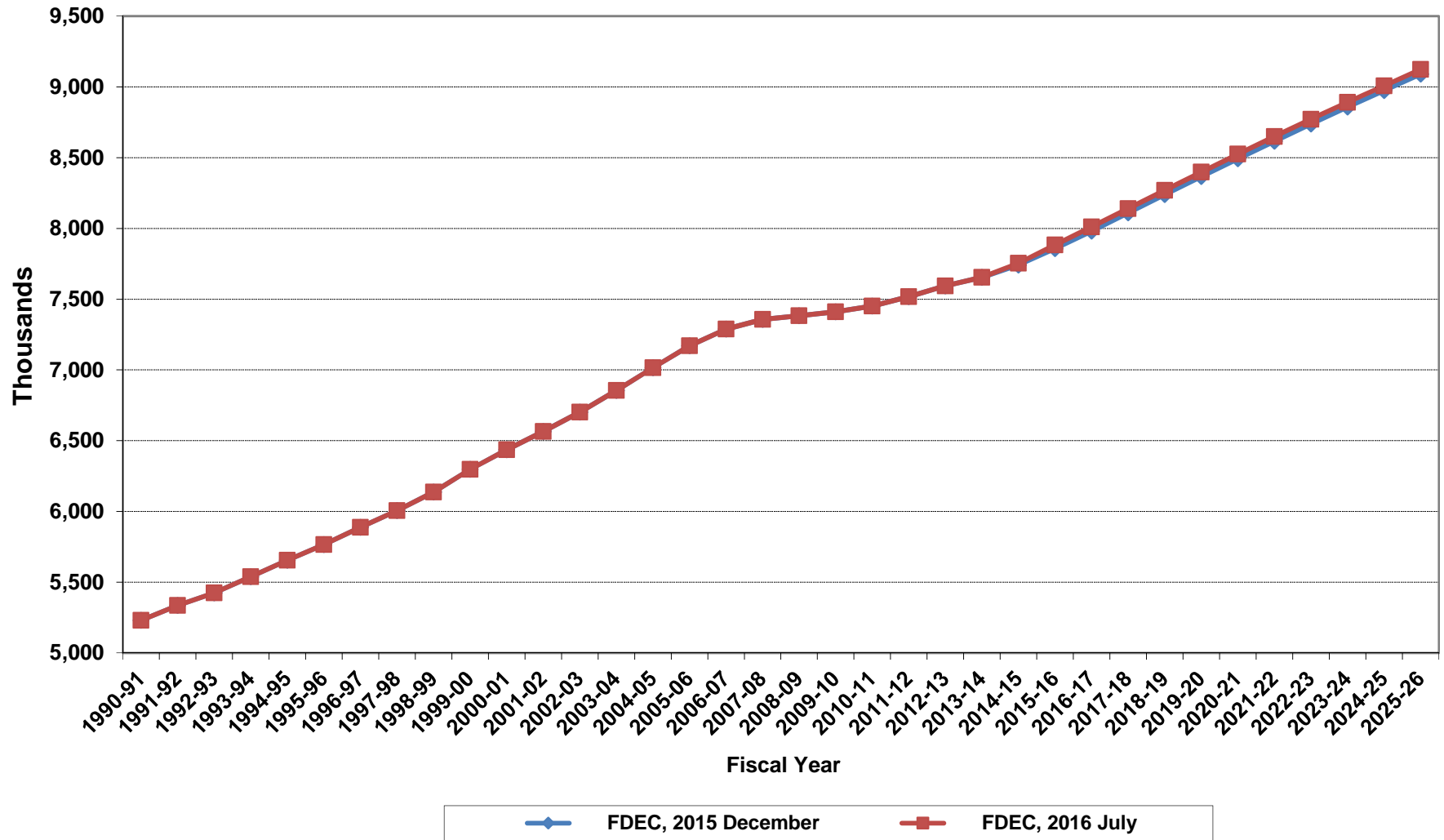
Florida Resident Population



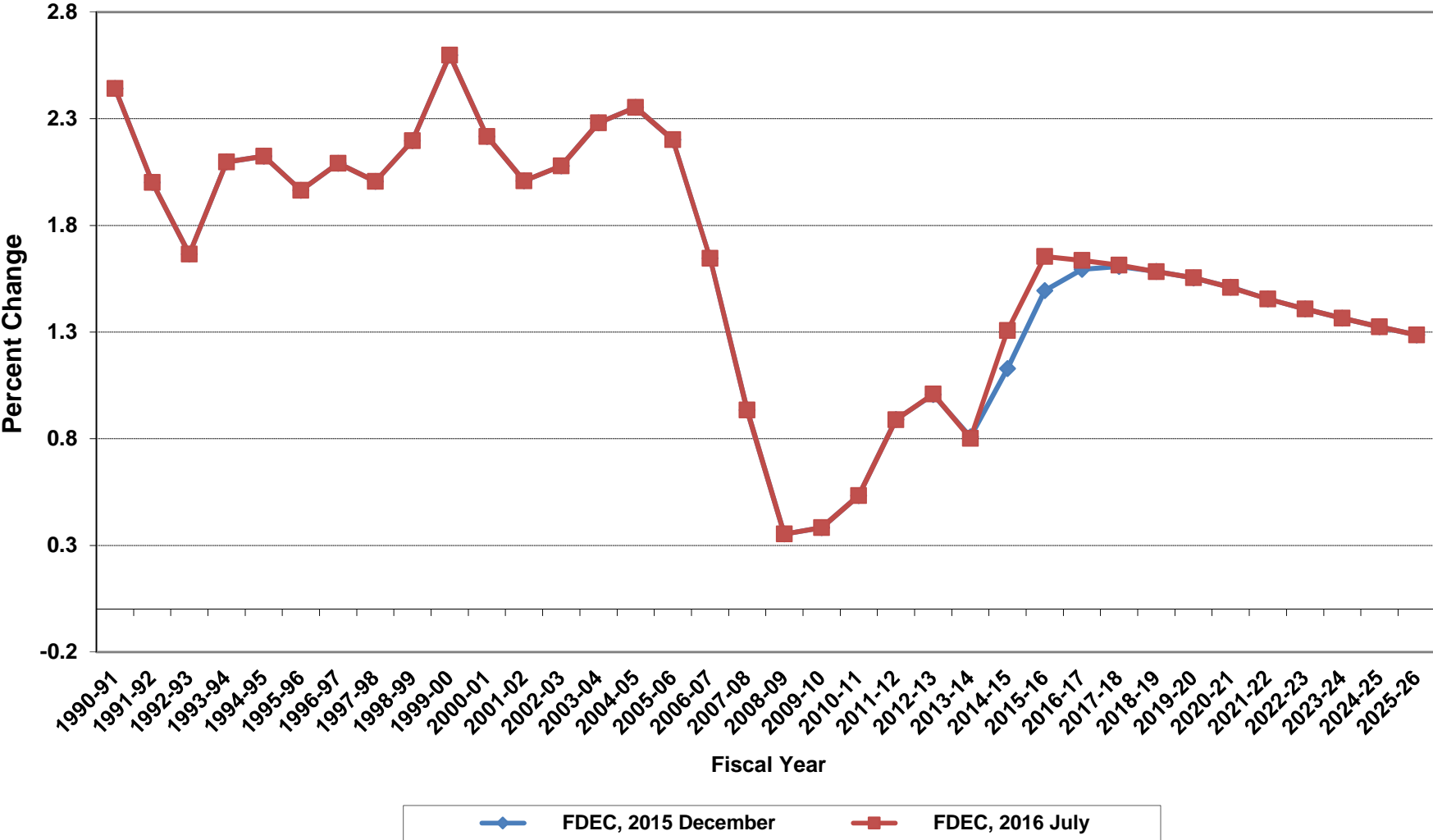
Net Change In Florida Resident Population



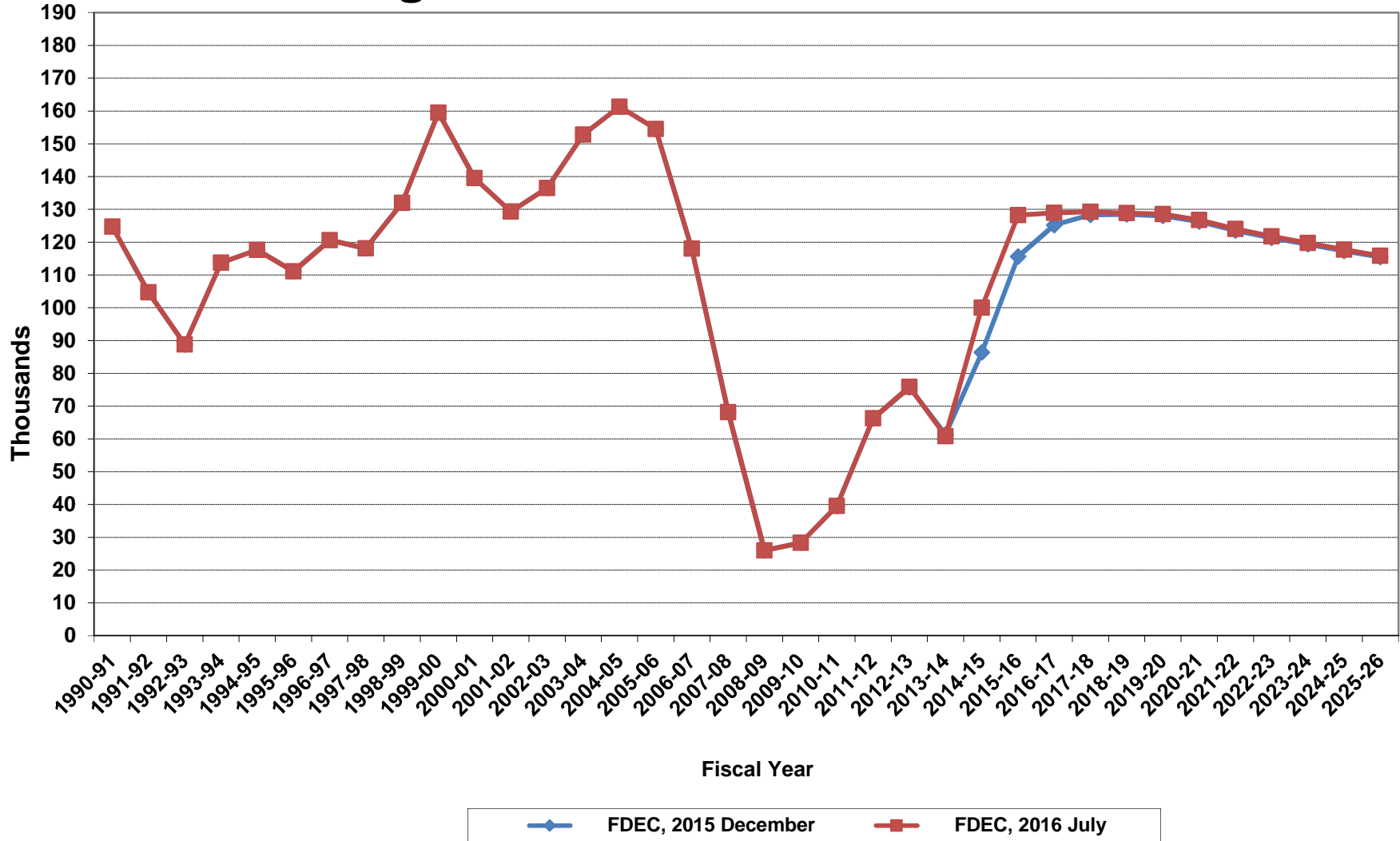
Florida Resident Households



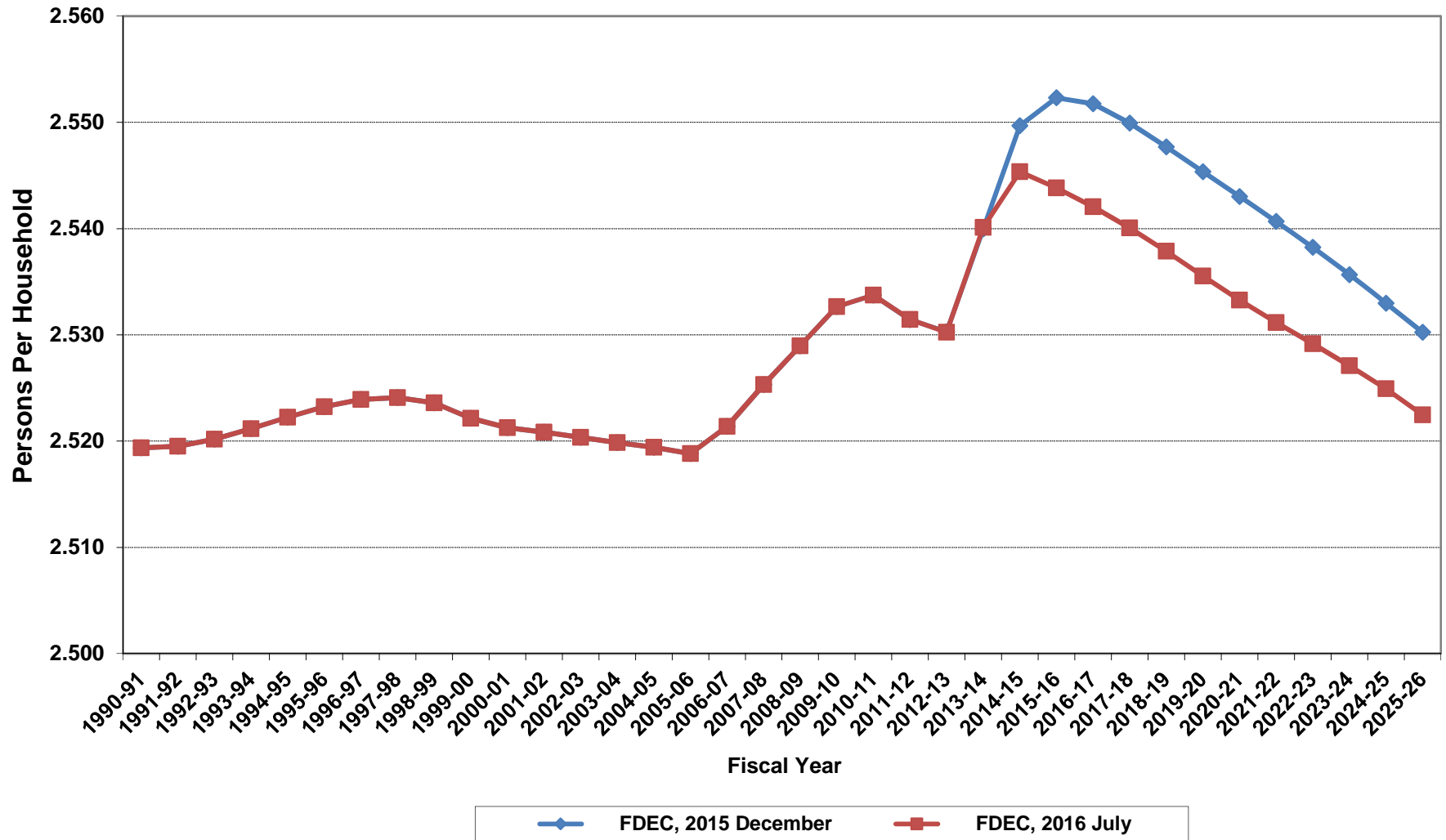
Growth In Florida Resident Households



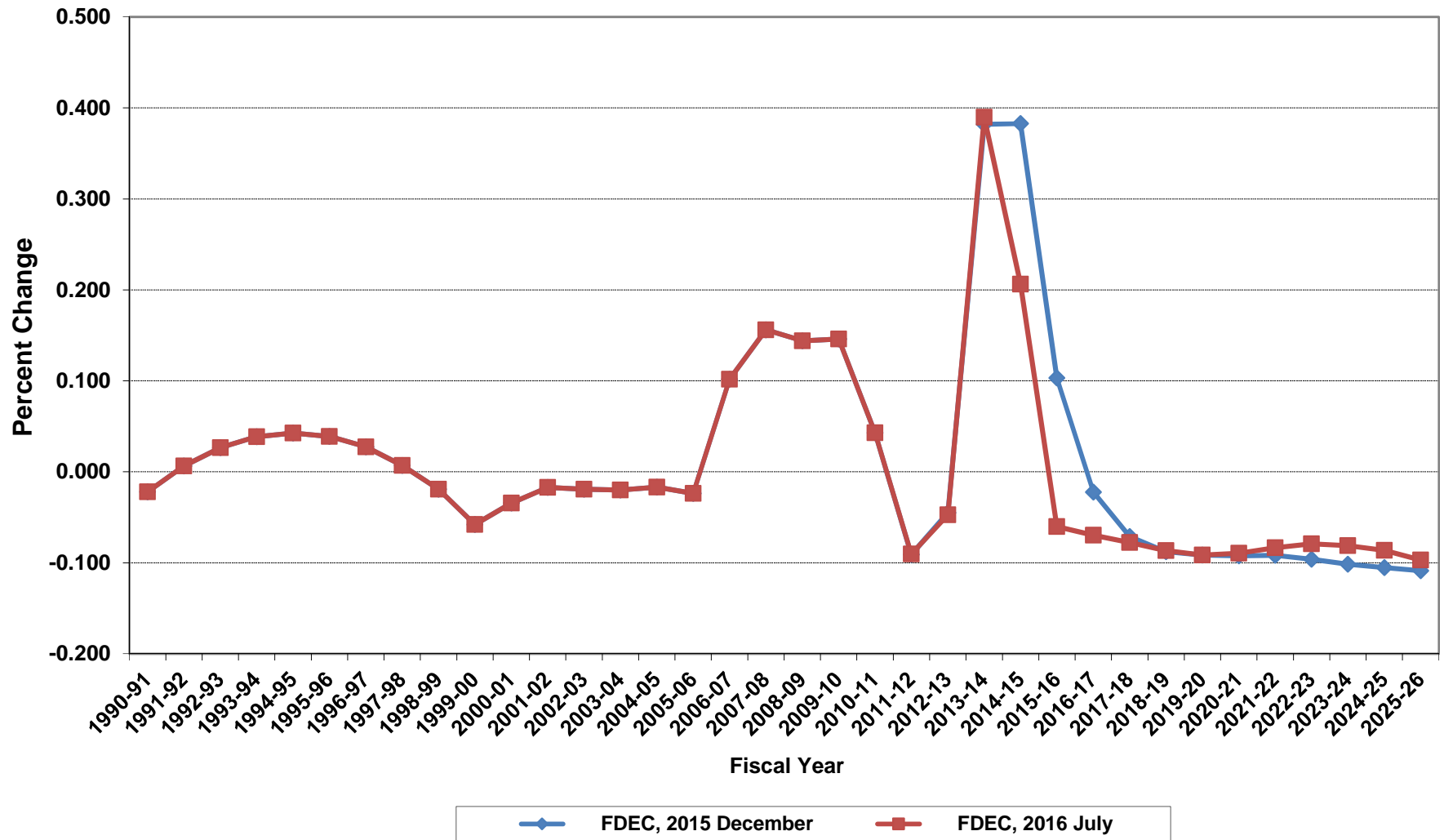
Net Change In Florida Resident Households



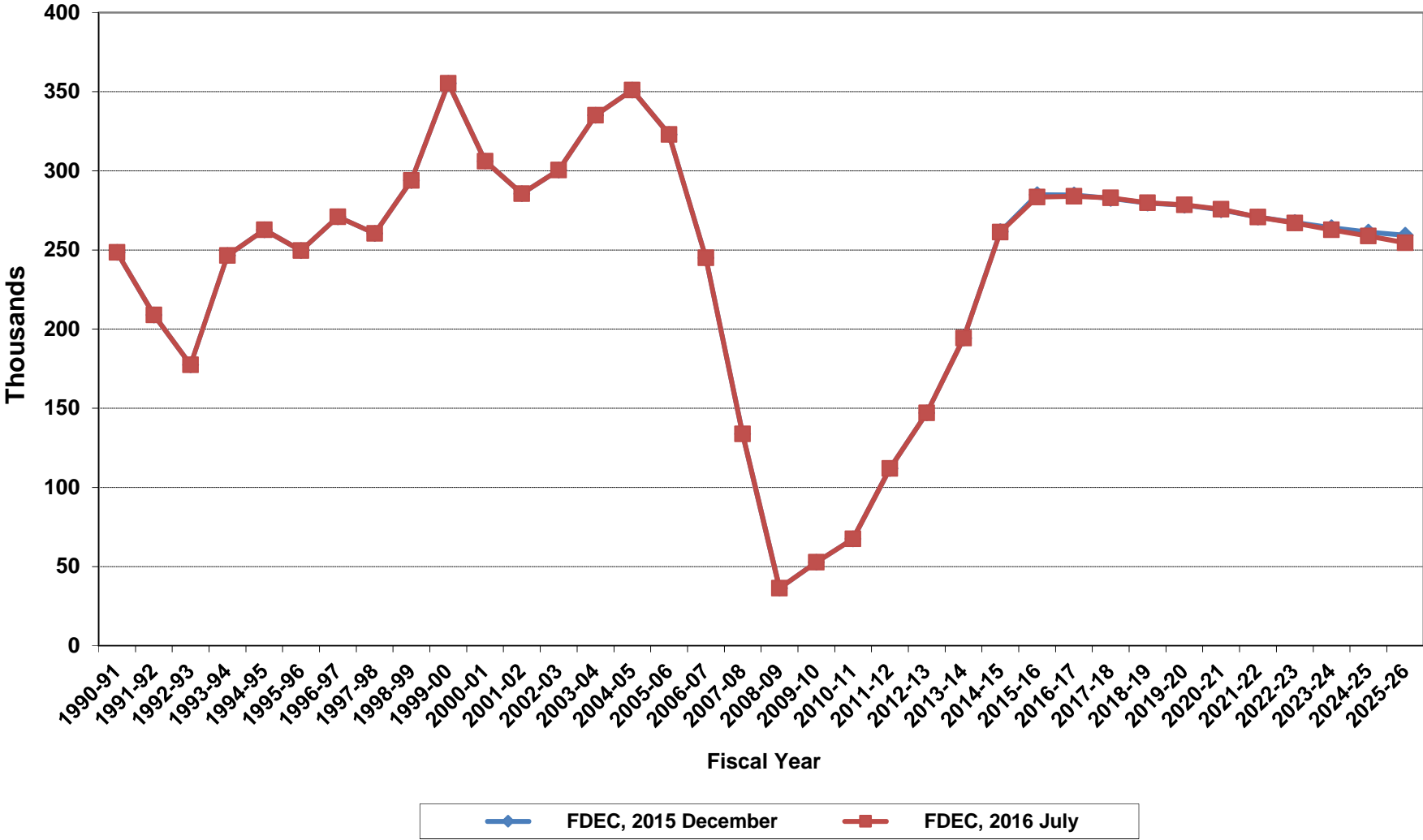
Average Florida Household Size



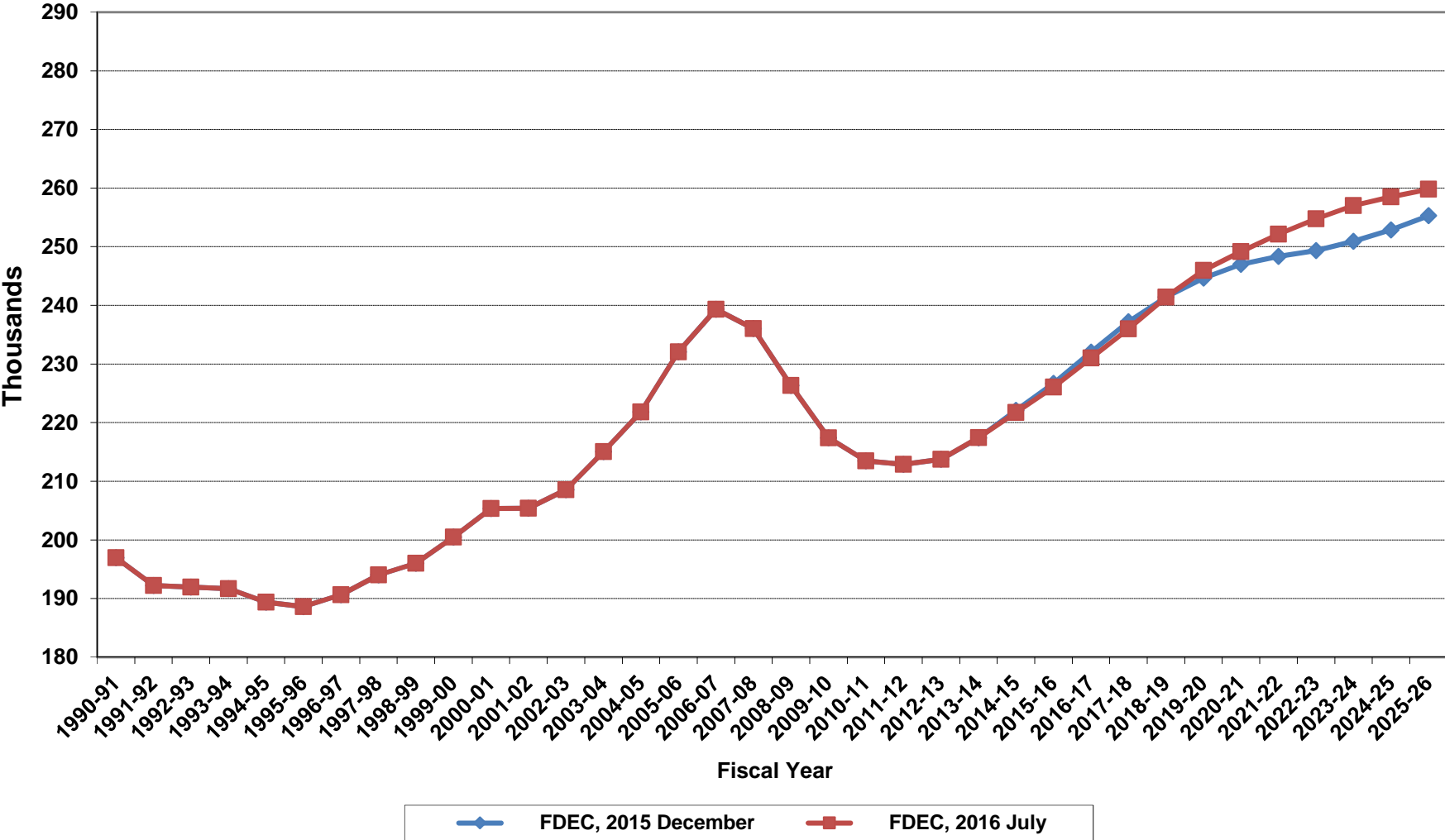
Growth In Average Florida Household Size



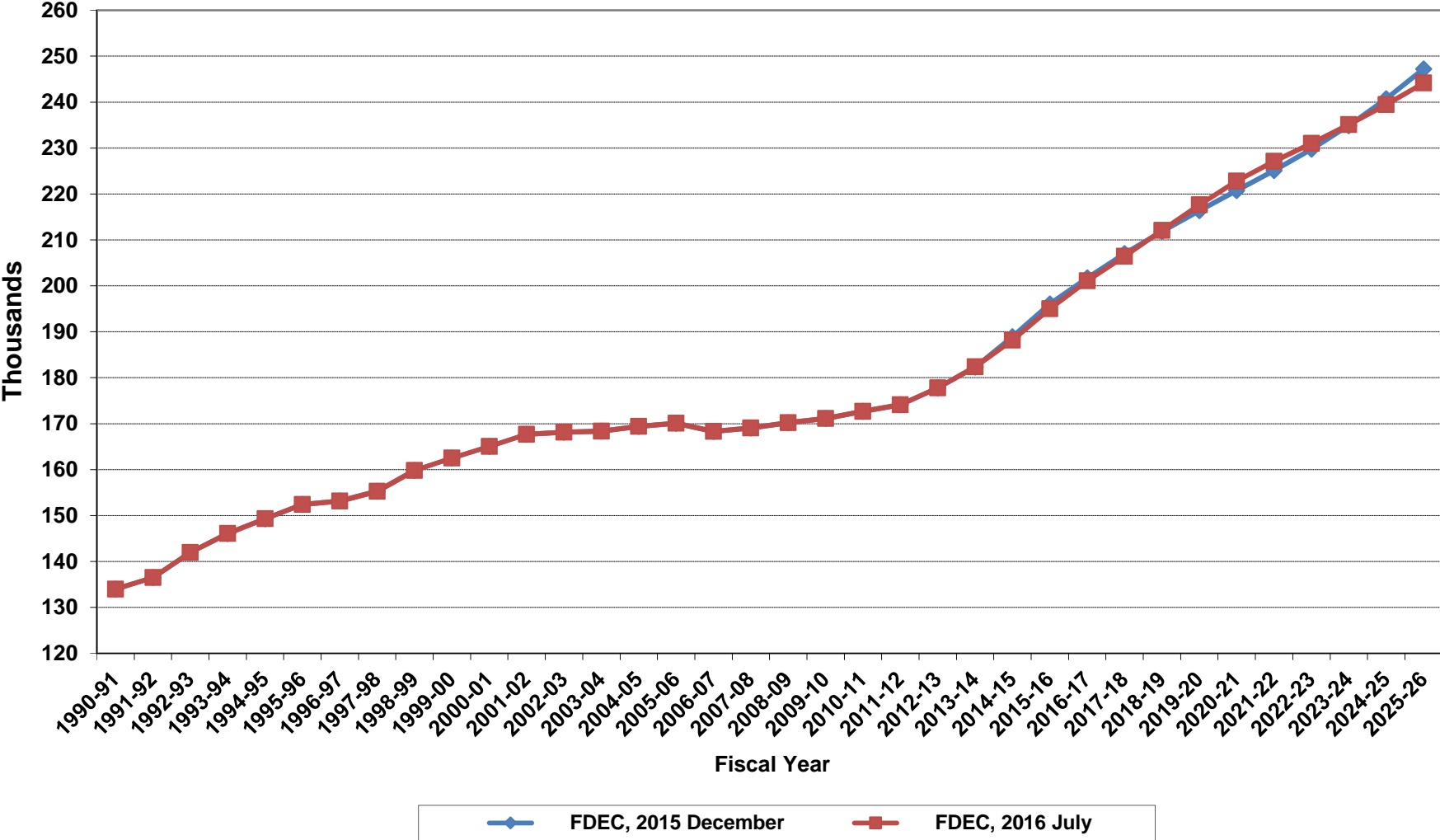
Florida Net Migration



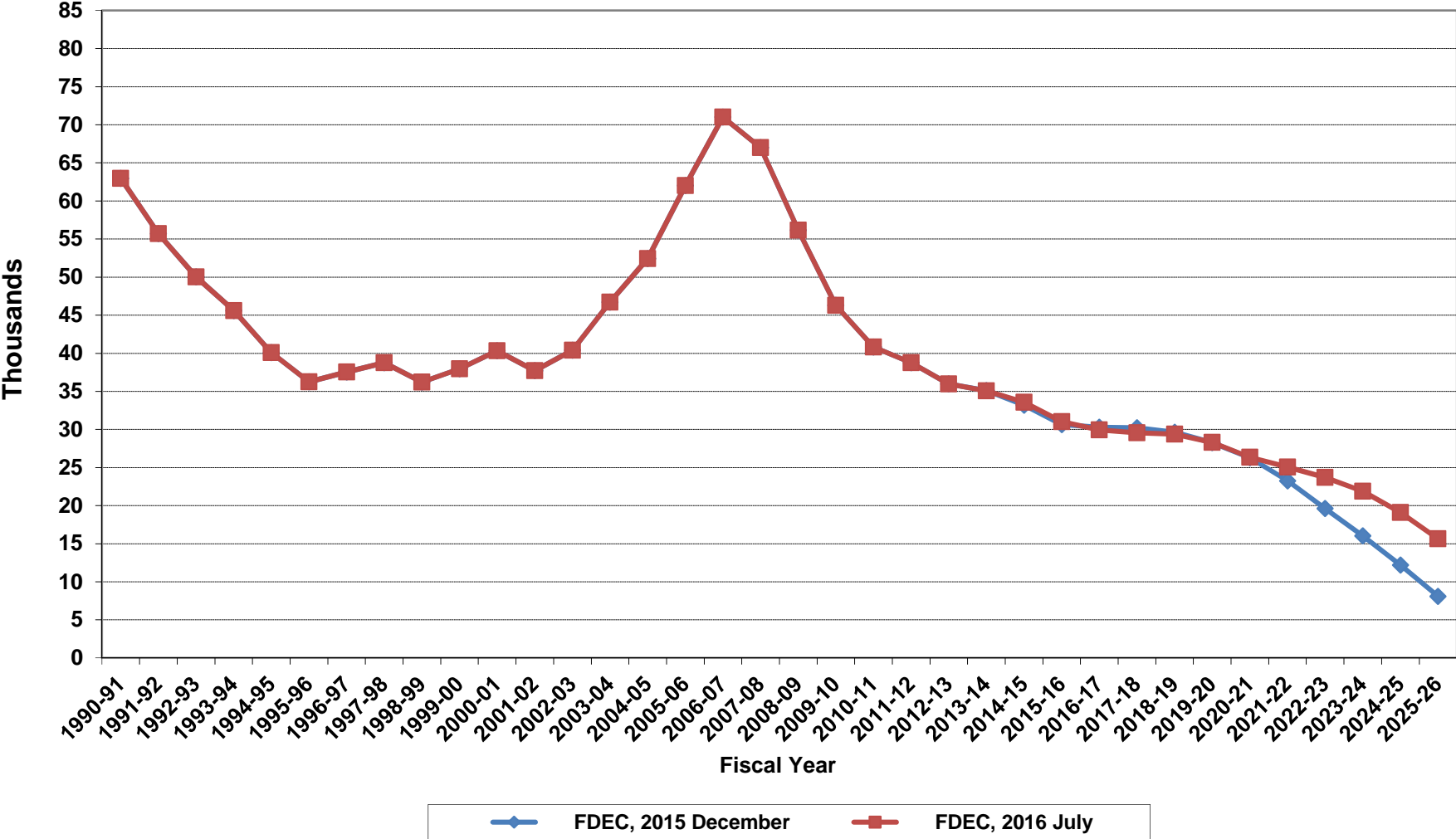
Florida Resident Live Births



Florida Resident Deaths



Florida Net Natural Increase



Florida Population and Components of Change

Fiscal Year	Population (End of Fiscal Year)	Growth Rate	Annual Change in Population	Births	Deaths	Net Natural Increase	Net Migration
1950 - 51	2,981,346	6.50%	181,931	67,486	27,670	39,816	142,115
1951 - 52	3,155,442	5.84%	174,096	72,383	28,942	43,441	130,655
1952 - 53	3,312,521	4.98%	157,079	76,954	29,761	47,193	109,886
1953 - 54	3,504,323	5.79%	191,802	82,725	31,055	51,670	140,132
1954 - 55	3,747,400	6.94%	243,077	86,643	32,176	54,467	188,610
1955 - 56	4,046,062	7.97%	298,662	92,941	34,932	58,009	240,653
1956 - 57	4,370,045	8.01%	323,983	100,990	38,269	62,721	261,262
1957 - 58	4,629,510	5.94%	259,465	105,972	41,911	64,061	195,404
1958 - 59	4,812,270	3.95%	182,760	110,409	43,674	66,735	116,025
1959 - 60	4,998,508	3.87%	186,238	114,428	46,057	68,371	117,867
1960 - 61	5,185,913	3.75%	187,405	116,449	48,388	68,061	119,344
1961 - 62	5,367,899	3.51%	181,986	116,120	50,346	65,774	116,212
1962 - 63	5,553,522	3.46%	185,623	114,709	54,453	60,256	125,367
1963 - 64	5,728,499	3.15%	174,977	115,002	56,229	58,773	116,204
1964 - 65	5,881,195	2.67%	152,696	110,515	57,734	52,781	99,915
1965 - 66	6,065,768	3.14%	184,573	104,367	61,217	43,150	141,423
1966 - 67	6,249,674	3.03%	183,906	101,209	62,577	38,632	145,274
1967 - 68	6,441,756	3.07%	192,082	100,320	66,134	34,186	157,896
1968 - 69	6,633,546	2.98%	191,790	104,286	71,285	33,001	158,789
1969 - 70	6,861,118	3.43%	227,572	111,511	73,831	37,680	189,892
1970 - 71	7,233,583	5.43%	372,465	117,012	75,354	41,658	330,807
1971 - 72	7,681,540	6.19%	447,957	113,568	79,717	33,851	414,106
1972 - 73	8,157,883	6.20%	476,343	107,804	86,232	21,572	454,771
1973 - 74	8,515,208	4.38%	357,325	109,366	88,459	20,907	336,418
1974 - 75	8,648,587	1.57%	133,379	108,686	87,224	21,462	111,917
1975 - 76	8,782,975	1.55%	134,388	104,022	88,129	15,893	118,495
1976 - 77	8,972,678	2.16%	189,703	107,623	90,443	17,180	172,523
1977 - 78	9,225,527	2.82%	252,849	112,268	93,383	18,885	233,964
1978 - 79	9,523,728	3.23%	298,201	116,393	96,801	19,592	278,609
1979 - 80	9,914,652	4.10%	390,924	126,673	101,048	25,625	365,299
1980 - 81	10,212,969	3.01%	298,317	135,560	107,562	27,998	270,319
1981 - 82	10,492,851	2.74%	279,882	141,593	108,644	32,949	246,933
1982 - 83	10,748,466	2.44%	255,615	146,853	110,497	36,356	219,259
1983 - 84	11,065,911	2.95%	317,445	151,748	113,939	37,809	279,636
1984 - 85	11,405,533	3.07%	339,622	159,819	117,539	42,280	297,342
1985 - 86	11,740,069	2.93%	334,536	165,857	122,453	43,404	291,132
1986 - 87	12,083,241	2.92%	343,172	170,819	124,946	45,873	297,299
1987 - 88	12,410,339	2.71%	327,098	179,541	129,413	50,128	276,970
1988 - 89	12,723,719	2.53%	313,380	188,390	131,992	56,398	256,982
1989 - 90	13,017,296	2.31%	293,577	197,181	132,503	64,678	228,899
1990 - 91	13,326,892	2.38%	309,596	197,180	134,093	63,087	246,509
1991 - 92	13,552,021	1.69%	225,129	191,810	136,280	55,530	169,599
1992 - 93	13,802,571	1.85%	250,550	192,051	142,087	49,964	200,586
1993 - 94	14,120,323	2.30%	317,752	191,840	146,101	45,739	272,013
1994 - 95	14,406,418	2.03%	286,095	189,292	149,161	40,131	245,964
1995 - 96	14,701,040	2.05%	294,622	188,584	152,570	36,014	258,608
1996 - 97	15,012,615	2.12%	311,575	190,587	153,067	37,520	274,055
1997 - 98	15,310,069	1.98%	297,454	194,242	155,080	39,162	258,292
1998 - 99	15,680,164	2.42%	370,095	195,897	159,988	35,909	334,186
1999 - 00	16,069,889	2.49%	389,725	200,302	162,489	37,813	351,912
2000 - 01	16,385,615	1.96%	315,726	205,798	164,919	40,879	274,847
2001 - 02	16,718,076	2.03%	332,461	205,164	167,812	37,352	295,109
2002 - 03	17,074,258	2.13%	356,182	208,403	168,079	40,324	315,858
2003 - 04	17,475,944	2.35%	401,686	215,298	168,302	46,996	354,690
2004 - 05	17,876,215	2.29%	400,271	221,533	169,302	52,231	348,040
2005 - 06	18,236,885	2.02%	360,670	232,019	170,303	61,716	298,954
2006 - 07	18,501,231	1.45%	264,346	239,635	168,117	71,518	192,828
2007 - 08	18,636,837	0.73%	135,606	236,065	168,966	67,099	68,507
2008 - 09	18,711,844	0.40%	75,007	226,337	170,615	55,722	19,285
2009 - 10	18,826,496	0.61%	114,652	217,408	171,117	46,291	68,361

Florida Population and Components of Change

Fiscal Year	Population (End of Fiscal Year)	Growth Rate	Annual Change in Population	Births	Deaths	Net Natural Increase	Net Migration
2010 - 11	18,941,725	0.61%	115,229	213,468	172,661	40,807	74,422
2011 - 12	19,119,003	0.94%	177,278	212,876	174,123	38,753	138,525
2012 - 13	19,314,154	1.02%	195,151	213,763	177,804	35,959	159,192
2013 - 14	19,580,775	1.38%	266,621	217,460	182,383	35,077	231,544
2014 - 15	19,894,087	1.60%	313,312	221,746	188,193	33,553	279,759
2015 - 16	20,207,682	1.58%	313,595	226,051	195,030	31,021	282,574
2016 - 17	20,521,500	1.55%	313,818	231,031	201,088	29,943	283,875
2017 - 18	20,832,378	1.51%	310,878	235,975	206,421	29,554	281,324
2018 - 19	21,140,241	1.48%	307,863	241,426	212,054	29,372	278,491
2019 - 20	21,445,237	1.44%	304,996	245,972	217,659	28,313	276,683
2020 - 21	21,744,098	1.39%	298,861	249,147	222,806	26,341	272,520
2021 - 22	22,037,216	1.35%	293,118	252,157	227,089	25,068	268,050
2022 - 23	22,325,168	1.31%	287,952	254,747	231,030	23,717	264,235
2023 - 24	22,606,568	1.26%	281,400	256,999	235,115	21,884	259,516
2024 - 25	22,880,759	1.21%	274,191	258,519	239,429	19,090	255,101
2025 - 26	23,147,399	1.17%	266,640	259,792	244,140	15,652	250,988
2026 - 27	23,408,412	1.13%	261,013	260,912	249,036	11,876	249,137
2027 - 28	23,663,646	1.09%	255,234	261,932	253,962	7,970	247,264
2028 - 29	23,914,655	1.06%	251,009	262,923	259,195	3,728	247,281
2029 - 30	24,160,961	1.03%	246,306	263,859	264,566	-707	247,013
2030 - 31	24,402,510	1.00%	241,549	264,803	269,981	-5,178	246,727
2031 - 32	24,638,923	0.97%	236,413	265,910	275,813	-9,903	246,316
2032 - 33	24,869,986	0.94%	231,063	267,158	281,838	-14,680	245,743
2033 - 34	25,096,371	0.91%	226,385	268,565	287,571	-19,006	245,391
2034 - 35	25,318,436	0.88%	222,065	269,961	292,794	-22,833	244,898
2035 - 36	25,536,099	0.86%	217,663	271,357	298,115	-26,758	244,421
2036 - 37	25,748,778	0.83%	212,679	272,937	303,924	-30,987	243,666
2037 - 38	25,957,781	0.81%	209,003	274,683	309,374	-34,691	243,694
2038 - 39	26,163,746	0.79%	205,965	276,583	314,126	-37,543	243,508

Demographic Estimating Conference
City of Miami Appeal
Executive Summary
October 13, 2016

The Demographic Estimating Conference met on October 13, 2016 to hear an appeal by the City of Miami to the recommended April 1, 2016 population estimate for their area. The preliminary population estimates are prepared by the University of Florida, Bureau of Economic and Business Research (BEBR) under contract with the Florida Legislature and distributed to local governments for their review. The City of Miami filed the appeal after discussions with BEBR had resulted in a modified preliminary estimate that was still short of the City's own internal estimate.

Presentations were made by the City of Miami, their representatives, and BEBR. After a discussion about the City of Miami's methodology and BEBR's estimate, the principals denied Miami's appeal and accepted the recommended population estimate of 456,089 from BEBR.