

**Demographic Estimating Conference**  
**Executive Summary**  
**November 5, 2018**

The Demographic Estimating Conference met on November 5, 2018, to adopt a new population forecast. The new estimates reflect a final April 1, 2018 population estimate of 20,840,568 and recent demographic and economic-related data. Compared to the last conference, the population projection for April 1, 2019 was revised upward by 14,094, reflecting stronger residential electric meter growth than anticipated in July. The upward revisions grow to 67,776 on April 1, 2024.

The Conference discussed the potential impact from Hurricane Michael on the state’s population. The population of the 16 disaster declared counties represents 3.9% of the state’s population, and the 6 hardest hit counties represent 1.5% of the state’s population. While there will likely be some shifting among counties and cities, the Conference decided that it was unlikely that the overall state total population will be negatively affected. Therefore, no discrete adjustment was made to the forecast.

In the new forecast, changes in population growth from the last conference are due mostly to net migration, as the forecast for natural increase remained relatively unchanged.

April 1	Population	Change from the Prior Year	
		Percent	Numeric
2012	19,074,434	0.90%	169,364
2013	19,259,543	0.97%	185,109
2014	19,507,369	1.29%	247,826
2015	19,815,183	1.58%	307,814
2016	20,148,654	1.68%	333,471
2017	20,484,142	1.67%	335,488
2018	20,840,568	1.74%	356,426
<i>Forecast</i>			
2019	21,170,399	1.58%	329,831
2020	21,496,410	1.54%	326,011
2021	21,817,417	1.49%	321,007
2022	22,132,369	1.44%	314,952
2023	22,439,508	1.39%	307,139
2024	22,735,936	1.32%	296,428

Between April 1, 2018 and April 1, 2024, population growth is expected to average 315,895 net new residents per year (865 per day), representing a compound growth rate of 1.46% over this six-year time horizon. These increases are analogous to adding a city slightly larger than Orlando every year.

Of note, the population estimates developed by the U.S. Census Bureau continue to be higher than the official state estimates adopted by the Demographic Estimating Conference. In the latest comparable set of estimates (July 1, 2017), the difference was about 420,800 persons. The Legislative Office of Economic and Demographic Research is continuing its efforts to identify how the differing underlying methodologies contribute to the gap between the two sets of estimates.

# **Florida Demographic Estimating Conference**

**Tables**  
Conference Packet

November 5, 2018

# Florida Resident Population

April 1

Year	Florida Demographic Estimating Conference July 2018			Florida Demographic Estimating Conference November 2018			
	Population	% Change	Change	Population	% Change	Change	
2000	15,982,824	2.58%	402,580	15,982,824	2.58%	402,580	
2001	16,305,100	2.02%	322,276	16,305,100	2.02%	322,276	
2002	16,634,256	2.02%	329,156	16,634,256	2.02%	329,156	
2003	16,979,706	2.08%	345,450	16,979,706	2.08%	345,450	
2004	17,374,824	2.33%	395,118	17,374,824	2.33%	395,118	
2005	17,778,156	2.32%	403,332	17,778,156	2.32%	403,332	
2006	18,154,475	2.12%	376,319	18,154,475	2.12%	376,319	
2007	18,446,768	1.61%	292,293	18,446,768	1.61%	292,293	
2008	18,613,905	0.91%	167,137	18,613,905	0.91%	167,137	
2009	18,687,425	0.39%	73,520	18,687,425	0.39%	73,520	
2010	18,801,332	0.61%	113,907	18,801,332	0.61%	113,907	
2011	18,905,070	0.55%	103,738	18,905,070	0.55%	103,738	
2012	19,074,434	0.90%	169,364	19,074,434	0.90%	169,364	
2013	19,259,543	0.97%	185,109	19,259,543	0.97%	185,109	
2014	19,507,369	1.29%	247,826	19,507,369	1.29%	247,826	
2015	19,815,183	1.58%	307,814	19,815,183	1.58%	307,814	
2016	20,148,654	1.68%	333,471	20,148,654	1.68%	333,471	
2017	20,484,142	1.67%	335,488	20,484,142	1.67%	335,488	
2018	20,841,358	1.74%	357,216	20,840,568	1.74%	356,426	
Begins forecast							
2019	21,156,305	1.51%	314,947	21,170,399	1.58%	329,831	
2020	21,467,364	1.47%	311,059	21,496,410	1.54%	326,011	
2021	21,775,296	1.43%	307,932	21,817,417	1.49%	321,007	
2022	22,079,403	1.40%	304,107	22,132,369	1.44%	314,952	
2023	22,377,549	1.35%	298,146	22,439,508	1.39%	307,139	
2024	22,668,160	1.30%	290,611	22,735,936	1.32%	296,428	
			5-Year Averages				5-Year Averages
2025	22,951,176	1.35%	296,762	23,021,659	1.38%	305,050	
2030	24,234,352	1.09%	256,635	24,300,834	1.09%	255,835	
2035	25,341,383	0.90%	221,406	25,394,497	0.88%	218,733	
2040	26,302,793	0.75%	192,282	26,343,525	0.74%	189,806	
2045	27,164,973	0.65%	172,436	27,194,481	0.64%	170,191	

# Florida Resident Households

April 1

Year	Florida Demographic Estimating Conference July 2018			Florida Demographic Estimating Conference November 2018			
	Households	% Change	Change	Households	% Change	Change	
2000	6,338,075	2.52%	155,729	6,338,075	2.65%	163,703	
2001	6,467,215	2.04%	129,140	6,460,934	1.94%	122,859	
2002	6,599,035	2.04%	131,820	6,586,806	1.95%	125,872	
2003	6,737,370	2.10%	138,335	6,719,399	2.01%	132,593	
2004	6,895,469	2.35%	158,099	6,872,318	2.28%	152,919	
2005	7,056,889	2.34%	161,420	7,029,787	2.29%	157,469	
2006	7,207,645	2.14%	150,756	7,178,486	2.12%	148,699	
2007	7,312,907	1.46%	105,262	7,292,550	1.59%	114,064	
2008	7,368,319	0.76%	55,412	7,354,880	0.85%	62,330	
2009	7,386,570	0.25%	18,251	7,379,964	0.34%	25,084	
2010	7,525,335	1.88%	138,765	7,420,802	0.55%	40,838	
2011	7,456,791	-0.91%	-68,544	7,456,791	0.48%	35,989	
2012	7,525,335	0.92%	68,544	7,525,335	0.92%	68,544	
2013	7,602,417	1.02%	77,082	7,602,417	1.02%	77,082	
2014	7,708,538	1.40%	106,121	7,708,538	1.40%	106,121	
2015	7,840,780	1.72%	132,242	7,840,780	1.72%	132,242	
2016	7,982,938	1.81%	142,158	7,982,938	1.81%	142,158	
2017	8,125,176	1.78%	142,238	8,125,176	1.78%	142,238	
Begins forecast							
2018	8,266,408	1.74%	141,232	8,275,600	1.85%	150,424	
2019	8,412,978	1.77%	146,570	8,414,576	1.68%	138,976	
2020	8,549,162	1.62%	136,184	8,555,197	1.67%	140,621	
2021	8,684,874	1.59%	135,712	8,695,424	1.64%	140,227	
2022	8,819,118	1.55%	134,244	8,833,823	1.59%	138,399	
2023	8,949,695	1.48%	130,577	8,968,446	1.52%	134,623	
2024	9,080,127	1.46%	130,432	9,103,376	1.50%	134,930	
			5-Year Averages				5-Year Averages
2025	9,209,540	1.50%	132,076	9,238,895	1.55%	136,740	
2030	9,817,224	1.29%	121,537	9,865,319	1.32%	125,285	
2035	10,367,333	1.10%	110,022	10,420,326	1.10%	111,001	
2040	10,812,390	0.84%	89,011	10,868,670	0.85%	89,669	
2045	11,176,413	0.66%	72,805	11,234,724	0.66%	73,211	

Note: Household series has been revised from 2001 forward.

Quarterly Data Table

	<u>2010-2</u>	<u>2010-3</u>	<u>2010-4</u>	<u>2011-1</u>	<u>2011-2</u>	<u>2011-3</u>	<u>2011-4</u>	<u>2012-1</u>	<u>2012-2</u>	<u>2012-3</u>	<u>2012-4</u>	<u>2013-1</u>	<u>2013-2</u>	<u>2013-3</u>
Population														
FDEC, July 2018	18,813.9	18,838.3	18,862.7	18,890.2	18,923.4	18,962.8	19,006.3	19,051.6	19,096.7	19,141.2	19,186.6	19,234.6	19,286.9	19,344.3
FDEC, November 2018	18,813.9	18,838.3	18,862.7	18,890.2	18,923.4	18,962.8	19,006.3	19,051.6	19,096.7	19,141.2	19,186.6	19,234.6	19,286.9	19,344.2
Population Growth Rate														
FDEC, July 2018	0.59	0.52	0.52	0.58	0.71	0.83	0.92	0.96	0.95	0.94	0.95	1.01	1.09	1.19
FDEC, November 2018	0.59	0.52	0.52	0.58	0.71	0.83	0.92	0.96	0.95	0.94	0.95	1.01	1.09	1.19
Net Change in Population														
FDEC, July 2018	27.9	24.4	24.4	27.5	33.2	39.4	43.5	45.3	45.1	44.5	45.4	48.0	52.3	57.3
FDEC, November 2018	27.9	24.4	24.4	27.5	33.2	39.4	43.5	45.3	45.1	44.5	45.4	48.0	52.3	57.3
Households														
FDEC, July 2018	7,425.0	7,433.2	7,441.5	7,451.3	7,463.9	7,479.6	7,497.3	7,515.9	7,534.5	7,552.9	7,571.8	7,591.9	7,614.1	7,638.5
FDEC, November 2018	7,425.0	7,433.2	7,441.5	7,451.3	7,463.9	7,479.6	7,497.3	7,515.9	7,534.5	7,552.9	7,571.8	7,591.9	7,614.1	7,638.5
Household Growth Rate														
FDEC, July 2018	0.50	0.44	0.45	0.53	0.68	0.84	0.95	1.00	0.99	0.98	1.00	1.07	1.17	1.29
FDEC, November 2018	0.50	0.44	0.45	0.53	0.68	0.84	0.95	1.00	0.99	0.98	1.00	1.07	1.17	1.29
Net Change in Households														
FDEC, July 2018	9.3	8.2	8.3	9.8	12.6	15.6	17.7	18.6	18.6	18.4	18.9	20.1	22.1	24.4
FDEC, November 2018	9.3	8.2	8.3	9.8	12.6	15.6	17.7	18.6	18.6	18.4	18.9	20.1	22.1	24.4
Household Size														
FDEC, July 2018	2.534	2.534	2.535	2.535	2.535	2.535	2.535	2.535	2.535	2.534	2.534	2.534	2.533	2.532
FDEC, November 2018	2.534	2.534	2.535	2.535	2.535	2.535	2.535	2.535	2.535	2.534	2.534	2.534	2.533	2.532
Household Size Growth Rate														
FDEC, July 2018	0.09	0.08	0.07	0.05	0.02	-0.01	-0.03	-0.04	-0.04	-0.04	-0.05	-0.06	-0.08	-0.09
FDEC, November 2018	0.09	0.08	0.07	0.05	0.02	-0.01	-0.03	-0.04	-0.04	-0.04	-0.05	-0.06	-0.08	-0.09
Net Migration														
FDEC, July 2018	17.2	14.1	14.3	17.2	23.1	29.3	33.7	35.8	35.7	35.3	36.3	39.1	43.5	48.6
FDEC, November 2018	17.2	14.1	14.3	17.2	23.1	29.3	33.7	35.8	35.7	35.3	36.3	39.1	43.5	48.6
Births														
FDEC, July 2018	53.7	53.5	53.3	53.4	53.3	53.3	53.2	53.2	53.2	53.3	53.4	53.5	53.7	53.9
FDEC, November 2018	53.7	53.5	53.3	53.4	53.3	53.3	53.2	53.2	53.2	53.3	53.4	53.5	53.7	53.9
Deaths														
FDEC, July 2018	43.1	43.2	43.2	43.1	43.1	43.2	43.4	43.6	43.8	44.1	44.3	44.6	44.9	45.1
FDEC, November 2018	43.1	43.2	43.2	43.1	43.1	43.2	43.4	43.6	43.8	44.1	44.3	44.6	44.9	45.1
Net Natural Increase														
FDEC, July 2018	10.6	10.3	10.0	10.3	10.2	10.0	9.9	9.5	9.3	9.2	9.0	8.9	8.8	8.8
FDEC, November 2018	10.6	10.3	10.0	10.3	10.2	10.0	9.9	9.5	9.3	9.2	9.0	8.9	8.8	8.8

**Quarterly Data Table**

	<u>2013-4</u>	<u>2014-1</u>	<u>2014-2</u>	<u>2014-3</u>	<u>2014-4</u>	<u>2015-1</u>	<u>2015-2</u>	<u>2015-3</u>	<u>2015-4</u>	<u>2016-1</u>	<u>2016-2</u>	<u>2016-3</u>	<u>2016-4</u>	<u>2017-1</u>
<b>Population</b>														
FDEC, July 2018	19,406.4	19,473.0	19,543.7	19,618.0	19,695.3	19,774.9	19,856.2	19,938.7	20,022.2	20,106.4	20,191.1	20,275.8	20,360.0	20,443.0
FDEC, November 2018	19,406.4	19,473.0	19,543.7	19,618.0	19,695.3	19,774.9	19,856.1	19,938.6	20,022.1	20,106.3	20,191.2	20,276.2	20,360.4	20,443.2
<b>Population Growth Rate</b>														
FDEC, July 2018	1.29	1.38	1.46	1.53	1.59	1.63	1.65	1.67	1.69	1.69	1.70	1.69	1.67	1.64
FDEC, November 2018	1.29	1.38	1.46	1.53	1.59	1.63	1.65	1.67	1.68	1.69	1.70	1.69	1.67	1.64
<b>Net Change in Population</b>														
FDEC, July 2018	62.1	66.6	70.7	74.3	77.3	79.6	81.3	82.5	83.5	84.2	84.7	84.7	84.2	83.0
FDEC, November 2018	62.1	66.6	70.7	74.3	77.3	79.6	81.2	82.5	83.5	84.3	84.9	85.0	84.3	82.8
<b>Households</b>														
FDEC, July 2018	7,665.1	7,693.7	7,724.2	7,756.1	7,789.4	7,823.5	7,858.3	7,893.6	7,929.1	7,965.0	8,000.9	8,036.9	8,072.6	8,107.8
FDEC, November 2018	7,665.1	7,693.7	7,724.2	7,756.1	7,789.4	7,823.5	7,858.3	7,893.5	7,929.1	7,965.0	8,001.0	8,037.0	8,072.7	8,107.8
<b>Household Growth Rate</b>														
FDEC, July 2018	1.40	1.50	1.59	1.67	1.72	1.77	1.79	1.81	1.82	1.82	1.82	1.81	1.79	1.75
FDEC, November 2018	1.40	1.50	1.59	1.67	1.72	1.77	1.79	1.81	1.82	1.82	1.82	1.81	1.79	1.75
<b>Net Change in Households</b>														
FDEC, July 2018	26.6	28.6	30.4	32.0	33.2	34.2	34.8	35.2	35.6	35.8	36.0	35.9	35.7	35.2
FDEC, November 2018	26.6	28.6	30.4	32.0	33.2	34.1	34.8	35.2	35.6	35.8	36.0	36.0	35.7	35.1
<b>Household Size</b>														
FDEC, July 2018	2.532	2.531	2.530	2.529	2.528	2.528	2.527	2.526	2.525	2.524	2.524	2.523	2.522	2.521
FDEC, November 2018	2.532	2.531	2.530	2.529	2.528	2.528	2.527	2.526	2.525	2.524	2.524	2.523	2.522	2.521
<b>Household Size Growth Rate</b>														
FDEC, July 2018	-0.11	-0.12	-0.13	-0.13	-0.14	-0.14	-0.13	-0.13	-0.13	-0.12	-0.12	-0.12	-0.11	-0.11
FDEC, November 2018	-0.11	-0.12	-0.13	-0.13	-0.14	-0.14	-0.13	-0.13	-0.13	-0.12	-0.12	-0.12	-0.11	-0.11
<b>Net Migration</b>														
FDEC, July 2018	53.4	57.8	61.9	65.6	68.7	71.1	72.9	74.4	75.6	76.7	77.5	78.0	77.9	77.4
FDEC, November 2018	53.4	57.8	62.0	65.6	68.7	71.1	72.9	74.3	75.6	76.8	77.7	78.2	77.9	77.2
<b>Births</b>														
FDEC, July 2018	54.1	54.5	54.8	55.1	55.4	55.8	56.0	56.2	56.3	56.3	56.3	56.3	56.2	55.9
FDEC, November 2018	54.1	54.5	54.8	55.1	55.4	55.8	56.0	56.2	56.3	56.3	56.3	56.3	56.2	55.9
<b>Deaths</b>														
FDEC, July 2018	45.4	45.7	46.1	46.4	46.8	47.3	47.7	48.1	48.4	48.8	49.1	49.5	49.9	50.3
FDEC, November 2018	45.4	45.7	46.1	46.4	46.8	47.3	47.7	48.1	48.4	48.8	49.1	49.5	49.9	50.3
<b>Net Natural Increase</b>														
FDEC, July 2018	8.7	8.8	8.8	8.7	8.6	8.5	8.3	8.1	7.8	7.5	7.2	6.8	6.3	5.6
FDEC, November 2018	8.7	8.8	8.8	8.7	8.6	8.5	8.3	8.1	7.8	7.5	7.2	6.8	6.3	5.6

Quarterly Data Table

	<u>2017-2</u>	<u>2017-3</u>	<u>2017-4</u>	<u>2018-1</u>	<u>2018-2</u>	<u>2018-3</u>	<u>2018-4</u>	<u>2019-1</u>	<u>2019-2</u>	<u>2019-3</u>	<u>2019-4</u>	<u>2020-1</u>	<u>2020-2</u>	<u>2020-3</u>
<b>Population</b>														
FDEC, July 2018	20,525.3	20,607.0	20,701.0	20,797.9	20,882.6	20,963.4	21,041.4	21,118.1	21,194.9	21,272.4	21,350.4	21,428.4	21,506.1	21,583.4
FDEC, November 2018	20,523.9	20,602.6	20,697.1	20,796.6	20,883.1	20,966.9	21,048.9	21,130.0	21,211.0	21,292.5	21,374.2	21,455.7	21,536.9	21,617.5
<b>Population Growth Rate</b>														
FDEC, July 2018	1.62	1.60	1.84	1.89	1.64	1.56	1.50	1.47	1.46	1.47	1.47	1.47	1.46	1.45
FDEC, November 2018	1.59	1.54	1.85	1.94	1.67	1.62	1.57	1.55	1.54	1.55	1.54	1.53	1.52	1.51
<b>Net Change in Population</b>														
FDEC, July 2018	82.3	81.7	93.9	96.9	84.7	80.8	78.0	76.7	76.8	77.5	78.0	78.0	77.7	77.3
FDEC, November 2018	80.7	78.7	94.5	99.5	86.5	83.8	82.0	81.1	81.1	81.5	81.7	81.5	81.2	80.7
<b>Households</b>														
FDEC, July 2018	8,142.2	8,176.0	8,211.7	8,248.5	8,284.7	8,321.6	8,358.5	8,394.9	8,430.5	8,465.0	8,498.8	8,532.4	8,566.0	8,599.9
FDEC, November 2018	8,142.1	8,175.7	8,215.4	8,257.1	8,293.5	8,328.7	8,363.2	8,397.4	8,432.0	8,466.9	8,502.2	8,537.5	8,572.8	8,608.0
<b>Household Growth Rate</b>														
FDEC, July 2018	1.71	1.67	1.76	1.81	1.77	1.79	1.79	1.76	1.70	1.65	1.61	1.59	1.59	1.59
FDEC, November 2018	1.70	1.66	1.96	2.04	1.77	1.71	1.67	1.65	1.65	1.67	1.68	1.67	1.66	1.65
<b>Net Change in Households</b>														
FDEC, July 2018	34.5	33.8	35.7	36.8	36.2	36.8	36.9	36.5	35.5	34.5	33.8	33.6	33.6	33.8
FDEC, November 2018	34.3	33.6	39.8	41.7	36.4	35.2	34.5	34.3	34.5	35.0	35.2	35.4	35.3	35.2
<b>Household Size</b>														
FDEC, July 2018	2.521	2.520	2.521	2.521	2.521	2.519	2.517	2.516	2.514	2.513	2.512	2.511	2.511	2.510
FDEC, November 2018	2.521	2.520	2.519	2.519	2.518	2.517	2.517	2.516	2.516	2.515	2.514	2.513	2.512	2.511
<b>Household Size Growth Rate</b>														
FDEC, July 2018	-0.09	-0.07	0.08	0.08	-0.13	-0.23	-0.29	-0.28	-0.24	-0.17	-0.13	-0.12	-0.12	-0.14
FDEC, November 2018	-0.11	-0.11	-0.11	-0.11	-0.10	-0.09	-0.09	-0.10	-0.11	-0.12	-0.13	-0.14	-0.14	-0.14
<b>Net Migration</b>														
FDEC, July 2018	77.1	76.8	89.4	92.5	80.5	76.7	74.0	72.7	72.9	73.6	74.1	74.1	73.8	73.4
FDEC, November 2018	75.5	73.9	89.9	95.1	82.3	79.8	77.9	77.0	77.1	77.5	77.7	77.5	77.2	76.7
<b>Births</b>														
FDEC, July 2018	55.8	55.9	56.0	56.2	56.4	56.6	56.9	57.2	57.5	57.8	58.1	58.4	58.7	59.0
FDEC, November 2018	55.8	55.9	56.0	56.2	56.4	56.6	56.9	57.2	57.5	57.8	58.1	58.5	58.8	59.0
<b>Deaths</b>														
FDEC, July 2018	50.6	51.0	51.4	51.8	52.2	52.6	52.9	53.2	53.5	53.9	54.2	54.5	54.8	55.1
FDEC, November 2018	50.6	51.0	51.4	51.8	52.2	52.5	52.9	53.2	53.5	53.8	54.1	54.4	54.7	55.0
<b>Net Natural Increase</b>														
FDEC, July 2018	5.2	4.9	4.6	4.4	4.2	4.1	4.0	4.0	3.9	3.9	3.9	3.9	3.9	3.9
FDEC, November 2018	5.2	4.9	4.6	4.4	4.2	4.1	4.0	4.0	4.0	4.0	4.0	4.0	4.0	4.0

### Quarterly Data Table

	<u>2020-4</u>	<u>2021-1</u>	<u>2021-2</u>	<u>2021-3</u>	<u>2021-4</u>	<u>2022-1</u>	<u>2022-2</u>	<u>2022-3</u>	<u>2022-4</u>	<u>2023-1</u>	<u>2023-2</u>	<u>2023-3</u>	<u>2023-4</u>	<u>2024-1</u>
<b>Population</b>														
FDEC, July 2018	21,660.4	21,737.0	21,813.5	21,889.8	21,965.9	22,041.6	22,117.0	22,191.9	22,266.5	22,340.6	22,414.3	22,487.4	22,560.0	22,632.2
FDEC, November 2018	21,697.8	21,777.6	21,857.1	21,936.2	22,015.0	22,093.3	22,171.2	22,248.5	22,325.3	22,401.5	22,477.1	22,551.9	22,626.0	22,699.4
<b>Population Growth Rate</b>														
FDEC, July 2018	1.43	1.42	1.41	1.41	1.40	1.39	1.37	1.36	1.35	1.34	1.33	1.31	1.30	1.29
FDEC, November 2018	1.49	1.48	1.47	1.46	1.44	1.43	1.42	1.40	1.39	1.37	1.36	1.34	1.32	1.30
<b>Net Change in Population</b>														
FDEC, July 2018	76.9	76.7	76.5	76.3	76.1	75.8	75.4	75.0	74.5	74.1	73.7	73.1	72.6	72.2
FDEC, November 2018	80.2	79.8	79.5	79.2	78.8	78.3	77.8	77.3	76.8	76.3	75.6	74.8	74.1	73.4
<b>Households</b>														
FDEC, July 2018	8,633.9	8,667.9	8,701.8	8,735.6	8,769.2	8,802.5	8,835.6	8,868.4	8,901.0	8,933.5	8,965.9	8,998.6	9,031.2	9,063.8
FDEC, November 2018	8,643.0	8,678.0	8,712.8	8,747.6	8,782.3	8,816.7	8,850.8	8,884.7	8,918.3	8,951.7	8,985.2	9,018.9	9,052.6	9,086.5
<b>Household Growth Rate</b>														
FDEC, July 2018	1.59	1.59	1.58	1.56	1.55	1.53	1.51	1.49	1.48	1.47	1.46	1.46	1.46	1.45
FDEC, November 2018	1.64	1.63	1.62	1.61	1.59	1.58	1.56	1.54	1.52	1.51	1.51	1.51	1.50	1.50
<b>Net Change in Households</b>														
FDEC, July 2018	34.0	34.0	33.9	33.8	33.6	33.3	33.1	32.8	32.6	32.5	32.5	32.6	32.7	32.6
FDEC, November 2018	35.0	34.9	34.9	34.8	34.6	34.4	34.1	33.8	33.6	33.5	33.5	33.6	33.7	33.8
<b>Household Size</b>														
FDEC, July 2018	2.509	2.508	2.507	2.506	2.505	2.504	2.503	2.502	2.502	2.501	2.500	2.499	2.498	2.497
FDEC, November 2018	2.510	2.510	2.509	2.508	2.507	2.506	2.505	2.504	2.503	2.502	2.502	2.501	2.499	2.498
<b>Household Size Growth Rate</b>														
FDEC, July 2018	-0.15	-0.16	-0.16	-0.15	-0.15	-0.14	-0.13	-0.13	-0.13	-0.13	-0.13	-0.15	-0.16	-0.16
FDEC, November 2018	-0.14	-0.15	-0.15	-0.15	-0.15	-0.14	-0.14	-0.13	-0.13	-0.13	-0.15	-0.17	-0.18	-0.20
<b>Net Migration</b>														
FDEC, July 2018	73.1	73.0	72.9	72.8	72.7	72.5	72.3	72.0	71.7	71.4	71.1	70.7	70.3	70.1
FDEC, November 2018	76.3	76.0	75.8	75.5	75.2	74.9	74.6	74.2	73.8	73.3	72.8	72.1	71.6	71.1
<b>Births</b>														
FDEC, July 2018	59.2	59.4	59.6	59.8	60.0	60.2	60.3	60.5	60.7	60.9	61.0	61.2	61.3	61.4
FDEC, November 2018	59.3	59.4	59.6	59.8	60.0	60.2	60.4	60.5	60.7	60.9	61.1	61.4	61.5	61.7
<b>Deaths</b>														
FDEC, July 2018	55.4	55.7	56.0	56.3	56.6	56.9	57.2	57.5	57.8	58.1	58.4	58.7	59.0	59.4
FDEC, November 2018	55.3	55.6	55.9	56.2	56.5	56.8	57.1	57.4	57.7	58.0	58.3	58.7	59.1	59.4
<b>Net Natural Increase</b>														
FDEC, July 2018	3.8	3.7	3.6	3.5	3.4	3.2	3.1	3.0	2.9	2.7	2.6	2.4	2.2	2.1
FDEC, November 2018	3.9	3.8	3.7	3.6	3.5	3.4	3.3	3.2	3.0	2.9	2.8	2.7	2.5	2.3



Quarterly Data Table

	<u>2024-2</u>	<u>2024-3</u>	<u>2024-4</u>	<u>2025-1</u>	<u>2025-2</u>	<u>2025-3</u>	<u>2025-4</u>	<u>2026-1</u>	<u>2026-2</u>	<u>2026-3</u>	<u>2026-4</u>	<u>2027-1</u>	<u>2027-2</u>
Population													
FDEC, July 2018	22,703.9	22,775.1	22,845.9	22,916.2	22,985.9	23,055.1	23,123.7	23,191.8	23,259.2	23,325.9	23,392.1	23,457.7	23,522.7
FDEC, November 2018	22,772.1	22,844.2	22,915.7	22,986.4	23,056.5	23,126.0	23,194.7	23,262.9	23,330.4	23,397.3	23,463.6	23,529.2	23,594.2
Population Growth Rate													
FDEC, July 2018	1.27	1.26	1.25	1.24	1.22	1.21	1.20	1.18	1.17	1.15	1.14	1.13	1.11
FDEC, November 2018	1.29	1.27	1.26	1.24	1.23	1.21	1.19	1.18	1.17	1.15	1.14	1.12	1.11
Net Change in Population													
FDEC, July 2018	71.7	71.2	70.8	70.3	69.7	69.2	68.6	68.0	67.4	66.8	66.2	65.6	65.0
FDEC, November 2018	72.8	72.1	71.4	70.8	70.1	69.4	68.8	68.1	67.5	66.9	66.3	65.6	65.0
Households													
FDEC, July 2018	9,096.4	9,128.8	9,161.2	9,193.4	9,225.6	9,257.6	9,289.5	9,321.1	9,352.5	9,383.6	9,414.5	9,445.2	9,475.7
FDEC, November 2018	9,120.3	9,154.2	9,188.1	9,222.0	9,255.7	9,289.4	9,322.8	9,356.1	9,389.1	9,421.8	9,454.2	9,486.4	9,518.3
Household Growth Rate													
FDEC, July 2018	1.44	1.43	1.43	1.42	1.41	1.40	1.38	1.37	1.35	1.34	1.32	1.31	1.30
FDEC, November 2018	1.50	1.50	1.49	1.48	1.47	1.46	1.45	1.43	1.42	1.40	1.38	1.37	1.35
Net Change in Households													
FDEC, July 2018	32.5	32.5	32.4	32.3	32.1	32.0	31.8	31.6	31.4	31.1	30.9	30.7	30.5
FDEC, November 2018	33.9	33.9	33.9	33.9	33.8	33.6	33.5	33.2	33.0	32.7	32.4	32.2	31.9
Household Size													
FDEC, July 2018	2.496	2.495	2.494	2.493	2.492	2.490	2.489	2.488	2.487	2.486	2.485	2.484	2.482
FDEC, November 2018	2.497	2.495	2.494	2.493	2.491	2.490	2.488	2.486	2.485	2.483	2.482	2.480	2.479
Household Size Growth Rate													
FDEC, July 2018	-0.17	-0.17	-0.17	-0.18	-0.18	-0.18	-0.18	-0.18	-0.18	-0.18	-0.18	-0.18	-0.18
FDEC, November 2018	-0.21	-0.22	-0.23	-0.24	-0.24	-0.25	-0.25	-0.25	-0.25	-0.25	-0.24	-0.24	-0.24
Net Migration													
FDEC, July 2018	69.8	69.5	69.2	68.9	68.6	68.3	67.9	67.6	67.2	66.8	66.5	66.2	65.9
FDEC, November 2018	70.6	70.1	69.7	69.1	68.7	68.2	67.8	67.4	67.0	66.6	66.3	65.9	65.5
Births													
FDEC, July 2018	61.6	61.7	61.8	61.9	62.1	62.2	62.3	62.4	62.5	62.6	62.7	62.8	62.8
FDEC, November 2018	61.8	62.0	62.1	62.2	62.3	62.5	62.6	62.7	62.8	62.9	63.0	63.1	63.1
Deaths													
FDEC, July 2018	59.7	60.0	60.3	60.6	60.9	61.2	61.6	62.0	62.3	62.7	63.0	63.4	63.7
FDEC, November 2018	59.7	60.0	60.3	60.6	60.9	61.2	61.6	61.9	62.3	62.6	63.0	63.3	63.7
Net Natural Increase													
FDEC, July 2018	1.9	1.7	1.5	1.4	1.2	0.9	0.7	0.4	0.2	-0.1	-0.3	-0.6	-0.9
FDEC, November 2018	2.1	2.0	1.8	1.6	1.4	1.2	1.0	0.7	0.5	0.3	0.0	-0.3	-0.5

## Quarterly Data Table

	<u>2027-3</u>	<u>2027-4</u>	<u>2028-1</u>	<u>2028-2</u>
<b>Population</b>				
FDEC, July 2018	23,587.2	23,651.2	23,714.6	23,777.5
FDEC, November 2018	23,658.5	23,722.3	23,785.4	23,848.1
<b>Population Growth Rate</b>				
FDEC, July 2018	1.10	1.09	1.08	1.07
FDEC, November 2018	1.10	1.08	1.07	1.06
<b>Net Change in Population</b>				
FDEC, July 2018	64.5	64.0	63.4	62.9
FDEC, November 2018	64.4	63.7	63.2	62.6
<b>Households</b>				
FDEC, July 2018	9,506.1	9,536.3	9,566.4	9,596.3
FDEC, November 2018	9,549.9	9,581.1	9,612.0	9,642.5
<b>Household Growth Rate</b>				
FDEC, July 2018	1.29	1.28	1.27	1.26
FDEC, November 2018	1.33	1.32	1.30	1.28
<b>Net Change in Households</b>				
FDEC, July 2018	30.4	30.2	30.1	29.9
FDEC, November 2018	31.6	31.3	30.9	30.5
<b>Household Size</b>				
FDEC, July 2018	2.481	2.480	2.479	2.478
FDEC, November 2018	2.477	2.476	2.475	2.473
<b>Household Size Growth Rate</b>				
FDEC, July 2018	-0.19	-0.19	-0.19	-0.19
FDEC, November 2018	-0.24	-0.23	-0.22	-0.22
<b>Net Migration</b>				
FDEC, July 2018	65.6	65.4	65.1	64.8
FDEC, November 2018	65.2	64.8	64.5	64.2
<b>Births</b>				
FDEC, July 2018	62.9	63.0	63.1	63.1
FDEC, November 2018	63.2	63.3	63.4	63.5
<b>Deaths</b>				
FDEC, July 2018	64.1	64.4	64.7	65.1
FDEC, November 2018	64.0	64.4	64.7	65.0
<b>Net Natural Increase</b>				
FDEC, July 2018	-1.1	-1.4	-1.7	-1.9
FDEC, November 2018	-0.8	-1.1	-1.3	-1.6

**Fiscal Year Data Table**

	<u>2000-01</u>	<u>2001-02</u>	<u>2002-03</u>	<u>2003-04</u>	<u>2004-05</u>	<u>2005-06</u>	<u>2006-07</u>	<u>2007-08</u>	<u>2008-09</u>	<u>2009-10</u>	<u>2010-11</u>	<u>2011-12</u>	<u>2012-13</u>	<u>2013-14</u>	<u>2014-15</u>
<b>Population</b>															
FDEC, July 2018	16,228.0	16,551.2	16,892.0	17,273.8	17,677.3	18,062.2	18,378.2	18,578.9	18,671.4	18,770.4	18,878.6	19,029.3	19,212.3	19,441.8	19,736.1
FDEC, November 2018	16,228.0	16,551.2	16,892.0	17,273.8	17,677.3	18,062.2	18,378.2	18,578.9	18,671.4	18,770.4	18,878.6	19,029.3	19,212.3	19,441.8	19,736.1
<b>Growth Rate</b>															
FDEC, July 2018	2.18	1.99	2.06	2.26	2.34	2.18	1.75	1.09	0.50	0.53	0.58	0.80	0.96	1.19	1.51
FDEC, November 2018	2.18	1.99	2.06	2.26	2.34	2.18	1.75	1.09	0.50	0.53	0.58	0.80	0.96	1.19	1.51
<b>Net Change in Population</b>															
FDEC, July 2018	346.4	323.2	340.9	381.8	403.5	384.9	316.0	200.7	92.5	99.0	108.2	150.7	183.0	229.5	294.3
FDEC, November 2018	346.4	323.2	340.9	381.8	403.5	384.9	316.0	200.7	92.5	99.0	108.2	150.7	183.0	229.5	294.3
<b>Households</b>															
FDEC, July 2018	6,431.8	6,554.7	6,685.7	6,833.2	6,990.5	7,142.1	7,266.1	7,341.9	7,374.2	7,410.1	7,447.5	7,506.8	7,582.7	7,680.4	7,806.8
FDEC, November 2018	6,431.8	6,554.7	6,685.7	6,833.2	6,990.5	7,142.1	7,266.1	7,341.9	7,374.2	7,410.1	7,447.5	7,506.8	7,582.7	7,680.4	7,806.8
<b>Growth Rate</b>															
FDEC, July 2018	2.14	1.91	2.00	2.21	2.30	2.17	1.74	1.04	0.44	0.49	0.50	0.80	1.01	1.29	1.65
FDEC, November 2018	2.14	1.91	2.00	2.21	2.30	2.17	1.74	1.04	0.44	0.49	0.50	0.80	1.01	1.29	1.65
<b>Net Change in Households</b>															
FDEC, July 2018	134.6	122.9	131.0	147.5	157.3	151.7	124.0	75.7	32.3	35.9	37.4	59.3	75.9	97.7	126.4
FDEC, November 2018	134.6	122.9	131.0	147.5	157.3	151.7	124.0	75.7	32.3	35.9	37.4	59.3	75.9	97.7	126.4
<b>Household Size</b>															
FDEC, July 2018	2.523	2.525	2.527	2.528	2.529	2.529	2.529	2.531	2.532	2.533	2.535	2.535	2.534	2.531	2.528
FDEC, November 2018	2.523	2.525	2.527	2.528	2.529	2.529	2.529	2.531	2.532	2.533	2.535	2.535	2.534	2.531	2.528
<b>Growth Rate</b>															
FDEC, July 2018	0.04	0.08	0.06	0.05	0.03	0.01	0.01	0.05	0.06	0.04	0.07	0.00	-0.05	-0.09	-0.13
FDEC, November 2018	0.04	0.08	0.06	0.05	0.03	0.01	0.01	0.05	0.06	0.04	0.07	0.00	-0.05	-0.09	-0.13
<b>Net Migration</b>															
FDEC, July 2018	306.0	285.5	300.4	335.0	351.1	322.9	245.0	133.7	36.3	52.7	67.4	112.0	147.0	194.5	260.1
FDEC, November 2018	306.0	285.5	300.4	335.0	351.1	322.9	245.0	133.7	36.3	52.7	67.4	112.0	147.0	194.4	260.2
<b>Births</b>															
FDEC, July 2018	205.4	205.4	208.5	215.0	221.8	232.1	239.3	236.0	226.4	217.4	213.5	212.9	213.8	217.4	222.3
FDEC, November 2018	205.4	205.4	208.5	215.0	221.8	232.1	239.3	236.0	226.4	217.4	213.5	212.9	213.8	217.4	222.3
<b>Deaths</b>															
FDEC, July 2018	165.0	167.7	168.1	168.3	169.4	170.1	168.3	169.0	170.2	171.1	172.7	174.1	177.8	182.4	188.2
FDEC, November 2018	165.0	167.7	168.1	168.3	169.4	170.1	168.3	169.0	170.2	171.1	172.7	174.1	177.8	182.4	188.2
<b>Net Natural Increase</b>															
FDEC, July 2018	40.3	37.7	40.4	46.7	52.4	62.0	71.0	67.0	56.2	46.3	40.8	38.8	36.0	35.0	34.1
FDEC, November 2018	40.3	37.7	40.4	46.7	52.4	62.0	71.0	67.0	56.2	46.3	40.8	38.8	36.0	35.0	34.1

Fiscal Year Data Table

	<u>2015-16</u>	<u>2016-17</u>	<u>2017-18</u>	<u>2018-19</u>	<u>2019-20</u>	<u>2020-21</u>	<u>2021-22</u>	<u>2022-23</u>	<u>2023-24</u>	<u>2024-25</u>	<u>2025-26</u>	<u>2026-27</u>	<u>2027-28</u>
Population													
FDEC, July 2018	20,064.6	20,401.0	20,747.1	21,079.4	21,389.3	21,698.6	22,003.6	22,303.3	22,595.9	22,880.8	23,157.4	23,424.6	23,682.6
FDEC, November 2018	20,064.5	20,400.9	20,744.8	21,089.2	21,414.8	21,737.5	22,053.9	22,363.1	22,662.3	22,950.7	23,228.5	23,496.1	23,753.6
Growth Rate													
FDEC, July 2018	1.66	1.68	1.70	1.60	1.47	1.45	1.41	1.36	1.31	1.26	1.21	1.15	1.10
FDEC, November 2018	1.66	1.68	1.69	1.66	1.54	1.51	1.46	1.40	1.34	1.27	1.21	1.15	1.10
Net Change in Population													
FDEC, July 2018	328.5	336.5	346.1	332.3	309.9	309.3	305.0	299.8	292.6	284.9	276.7	267.1	258.0
FDEC, November 2018	328.4	336.4	343.9	344.4	325.6	322.7	316.4	309.2	299.3	288.4	277.8	267.5	257.5
Households													
FDEC, July 2018	7,947.2	8,089.9	8,230.2	8,376.4	8,515.6	8,650.9	8,785.7	8,917.2	9,047.5	9,177.3	9,305.2	9,429.7	9,551.3
FDEC, November 2018	7,947.1	8,089.9	8,235.4	8,380.3	8,519.8	8,660.5	8,799.3	8,935.0	9,069.6	9,205.0	9,339.3	9,470.2	9,596.4
Growth Rate													
FDEC, July 2018	1.80	1.80	1.73	1.78	1.66	1.59	1.56	1.50	1.46	1.43	1.39	1.34	1.29
FDEC, November 2018	1.80	1.80	1.80	1.76	1.67	1.65	1.60	1.54	1.51	1.49	1.46	1.40	1.33
Net Change in Households													
FDEC, July 2018	140.3	142.7	140.4	146.1	139.2	135.3	134.9	131.5	130.3	129.8	127.9	124.6	121.6
FDEC, November 2018	140.3	142.7	145.5	144.9	139.5	140.6	138.9	135.6	134.6	135.4	134.3	130.8	126.2
Household Size													
FDEC, July 2018	2.525	2.522	2.521	2.517	2.512	2.508	2.504	2.501	2.497	2.493	2.489	2.484	2.480
FDEC, November 2018	2.525	2.522	2.519	2.517	2.514	2.510	2.506	2.503	2.499	2.493	2.487	2.481	2.475
Growth Rate													
FDEC, July 2018	-0.13	-0.12	-0.04	-0.17	-0.19	-0.14	-0.15	-0.13	-0.15	-0.17	-0.18	-0.18	-0.19
FDEC, November 2018	-0.13	-0.12	-0.11	-0.10	-0.12	-0.14	-0.15	-0.14	-0.17	-0.22	-0.25	-0.25	-0.23
Net Migration													
FDEC, July 2018	297.9	312.5	328.1	316.4	294.3	294.3	291.8	288.6	283.9	279.2	274.4	269.0	264.2
FDEC, November 2018	297.8	312.5	325.9	328.2	309.6	307.2	302.6	297.2	289.7	281.6	274.3	268.1	262.3
Births													
FDEC, July 2018	225.0	224.2	224.4	228.1	233.0	237.2	240.3	243.1	245.4	247.5	249.3	250.9	252.1
FDEC, November 2018	225.0	224.2	224.5	228.2	233.1	237.4	240.4	243.2	246.5	248.6	250.5	252.1	253.4
Deaths													
FDEC, July 2018	194.4	200.3	206.5	212.2	217.4	222.3	227.1	231.9	236.8	241.8	247.1	252.7	258.3
FDEC, November 2018	194.4	200.3	206.4	212.0	217.1	221.9	226.6	231.3	236.9	241.8	247.0	252.7	258.1
Net Natural Increase													
FDEC, July 2018	30.6	23.9	18.0	15.9	15.6	14.9	13.2	11.2	8.6	5.7	2.3	-1.9	-6.1
FDEC, November 2018	30.6	23.9	18.0	16.1	16.0	15.4	13.8	11.9	9.6	6.8	3.4	-0.6	-4.7

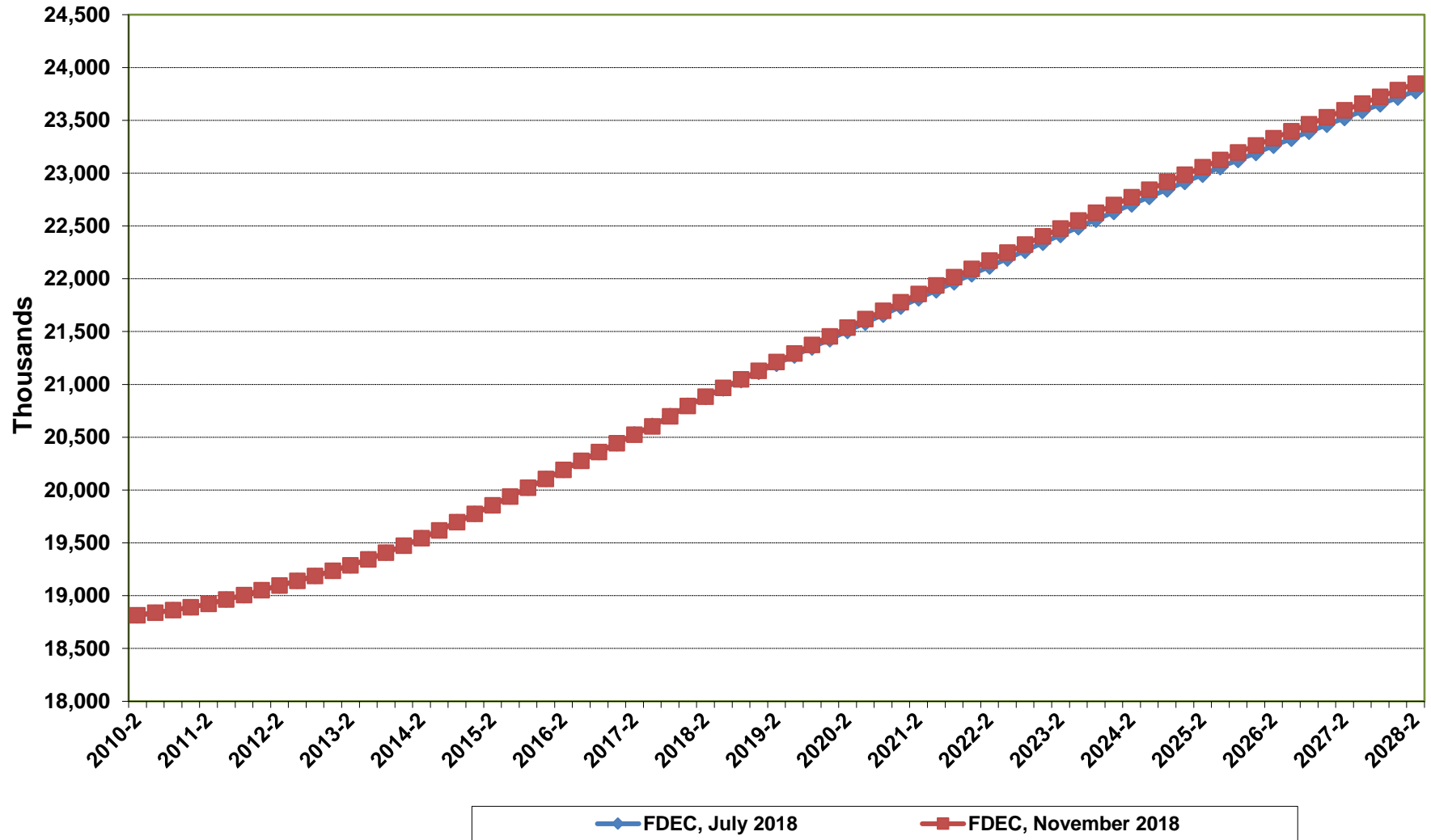
# **Florida Demographic Estimating Conference**

## **Charts**

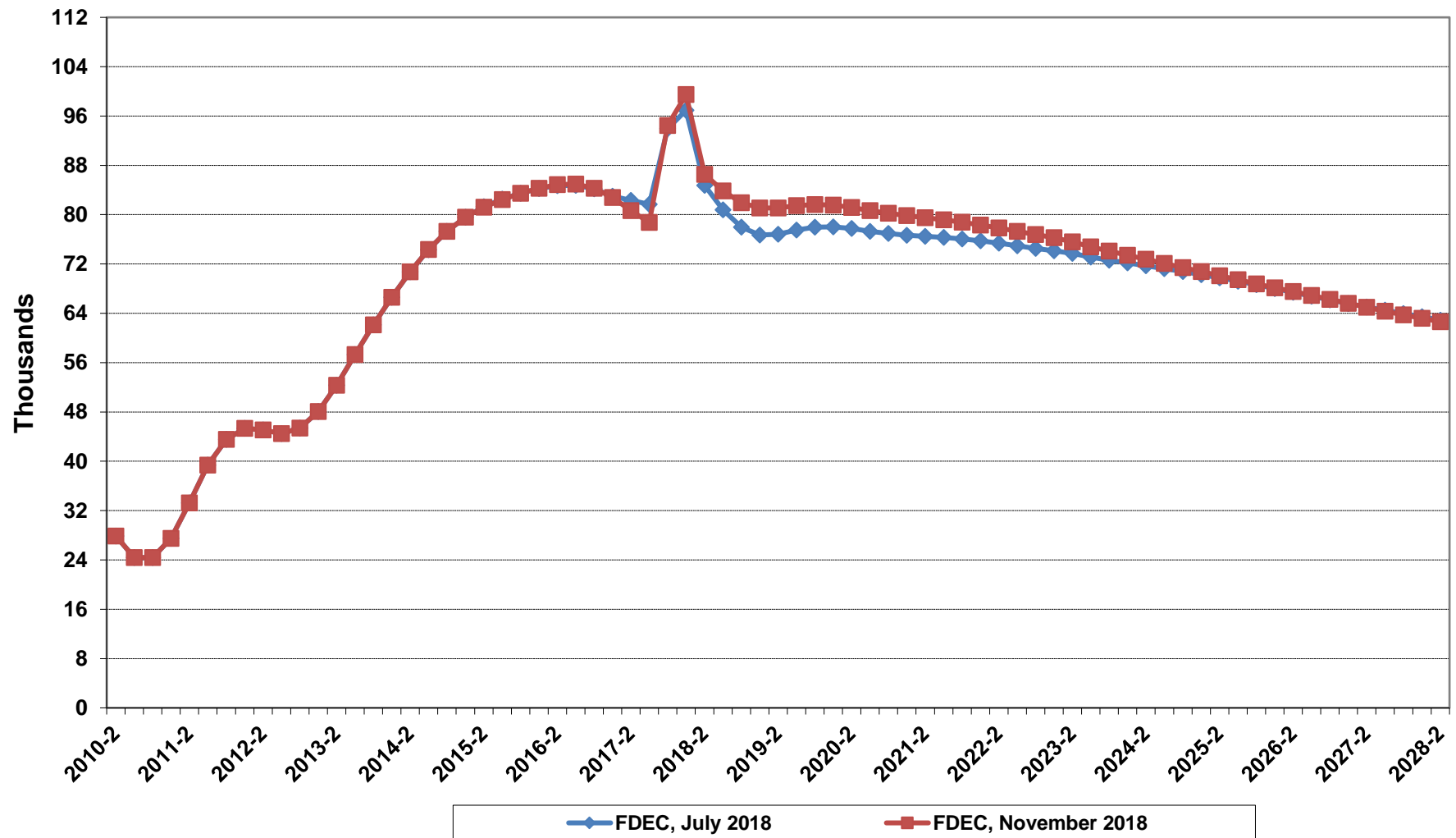
Conference Packet

November 5, 2018

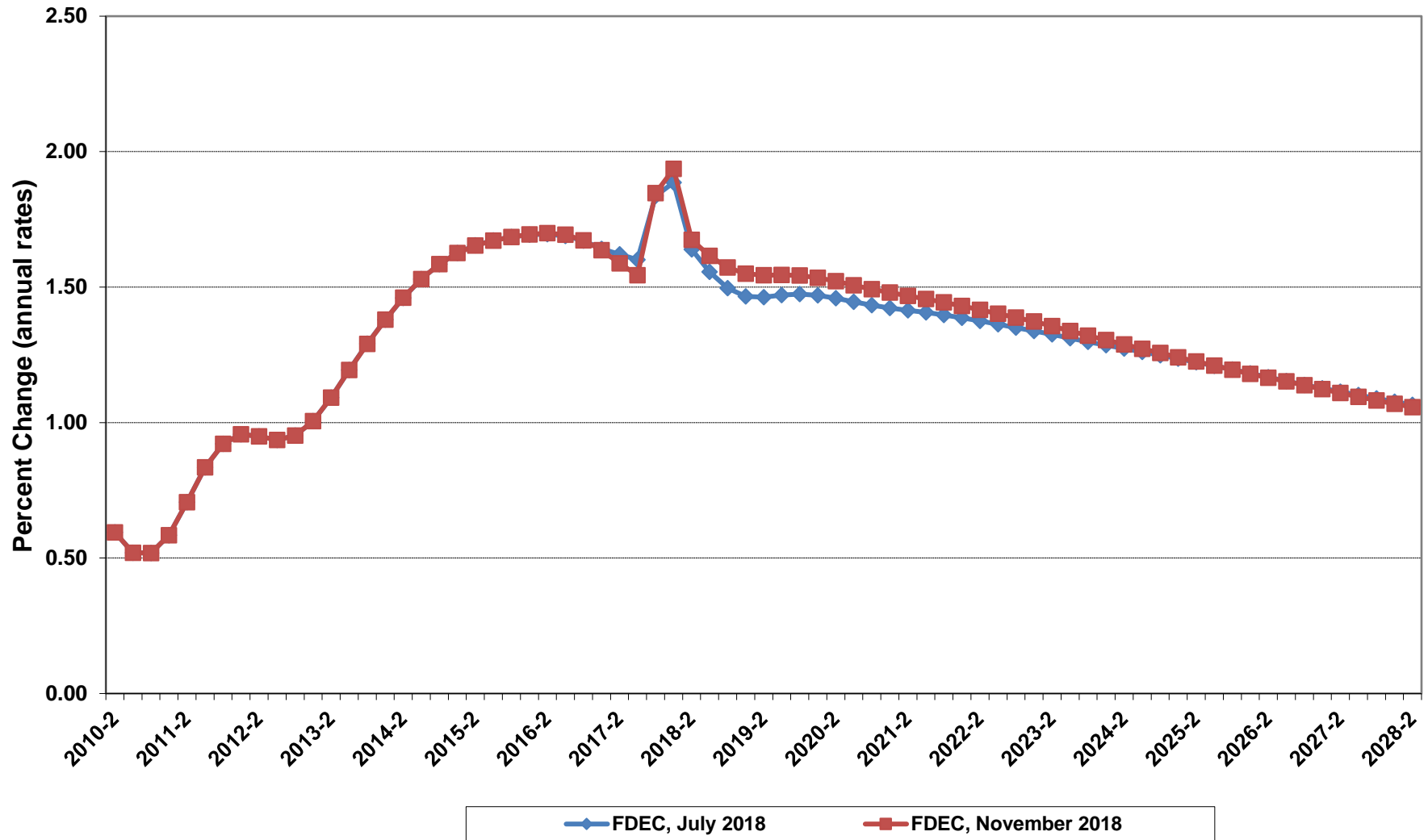
# Florida Resident Population



# Net Change In Florida Resident Population

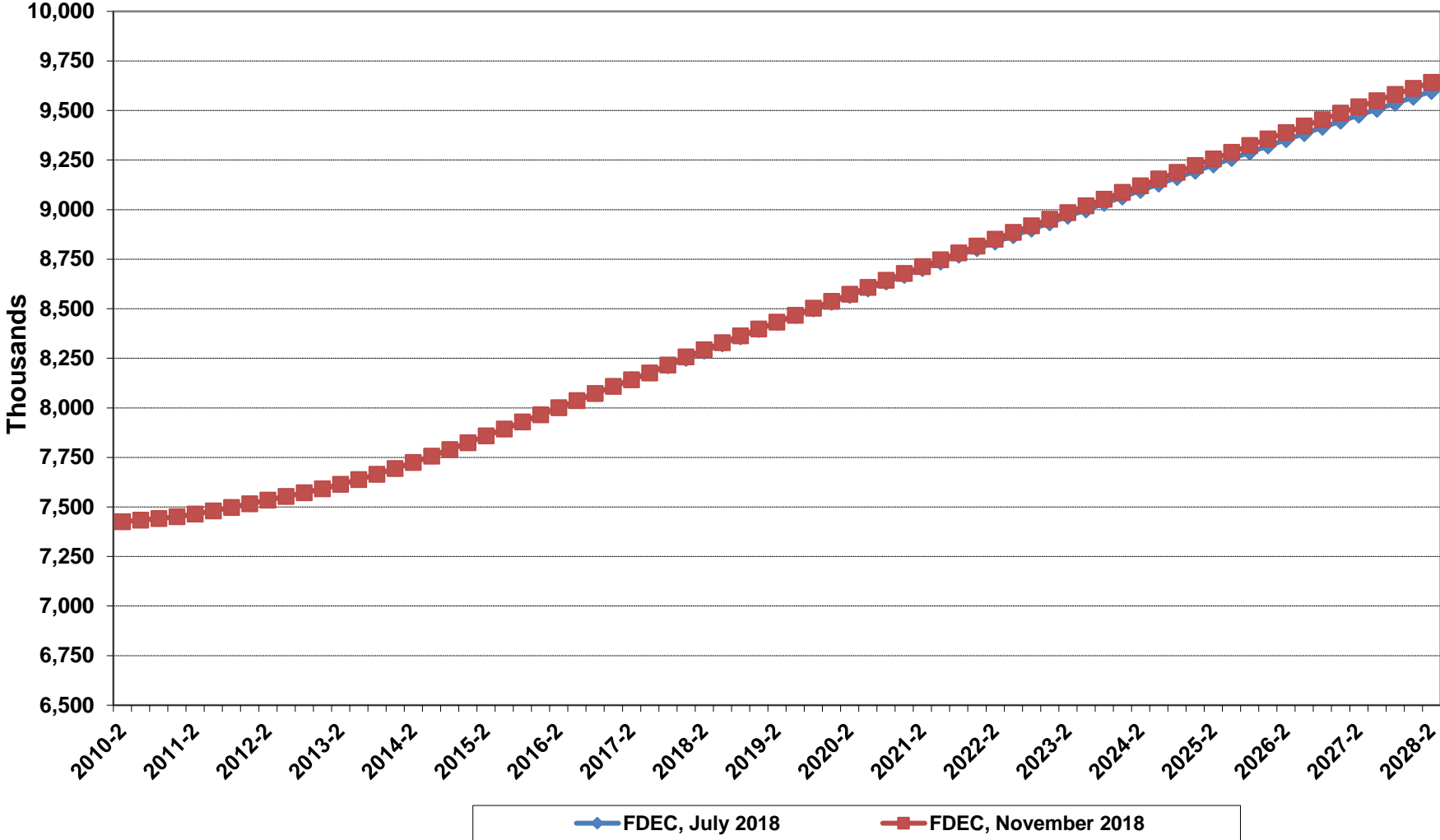


# Growth In Florida Resident Population

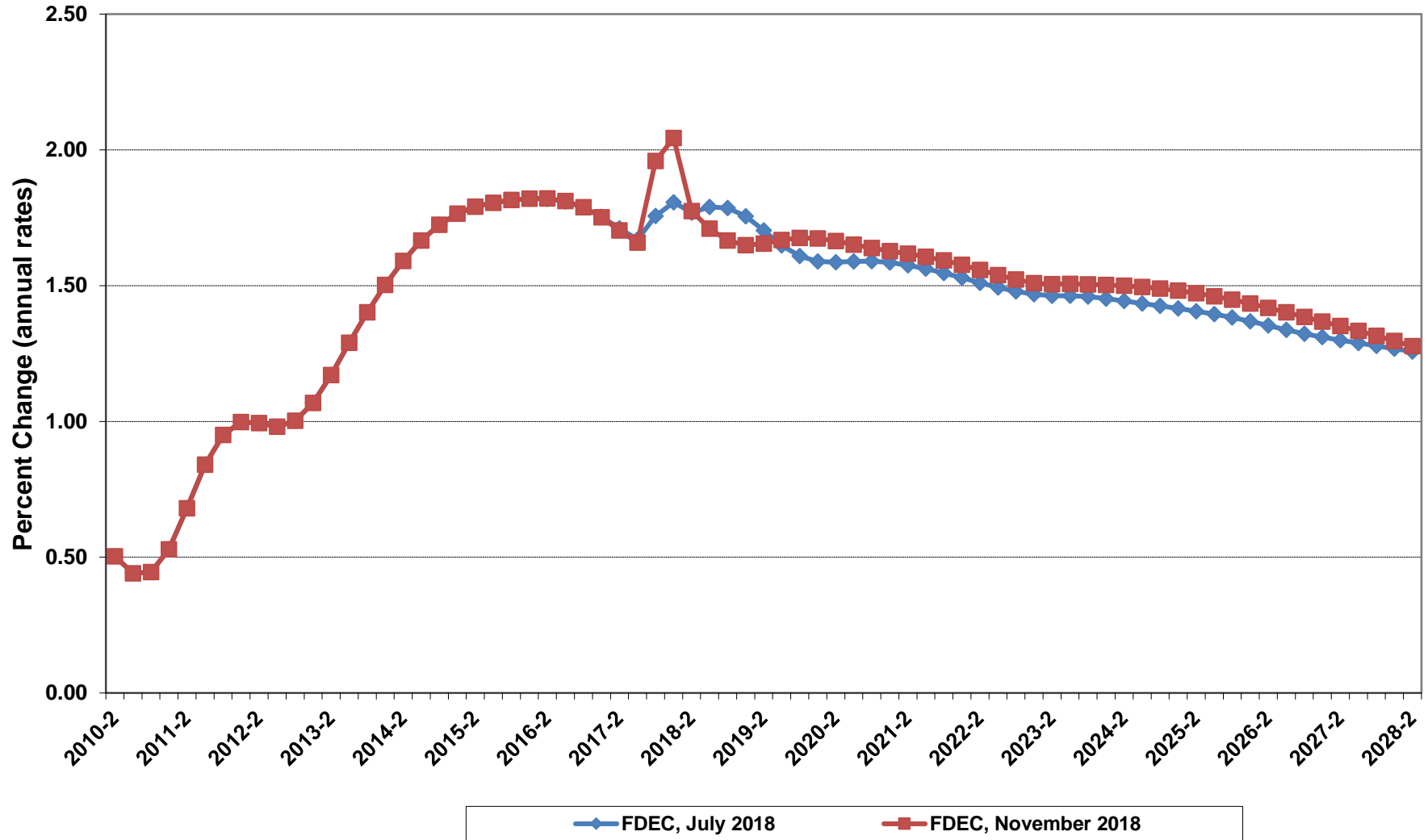




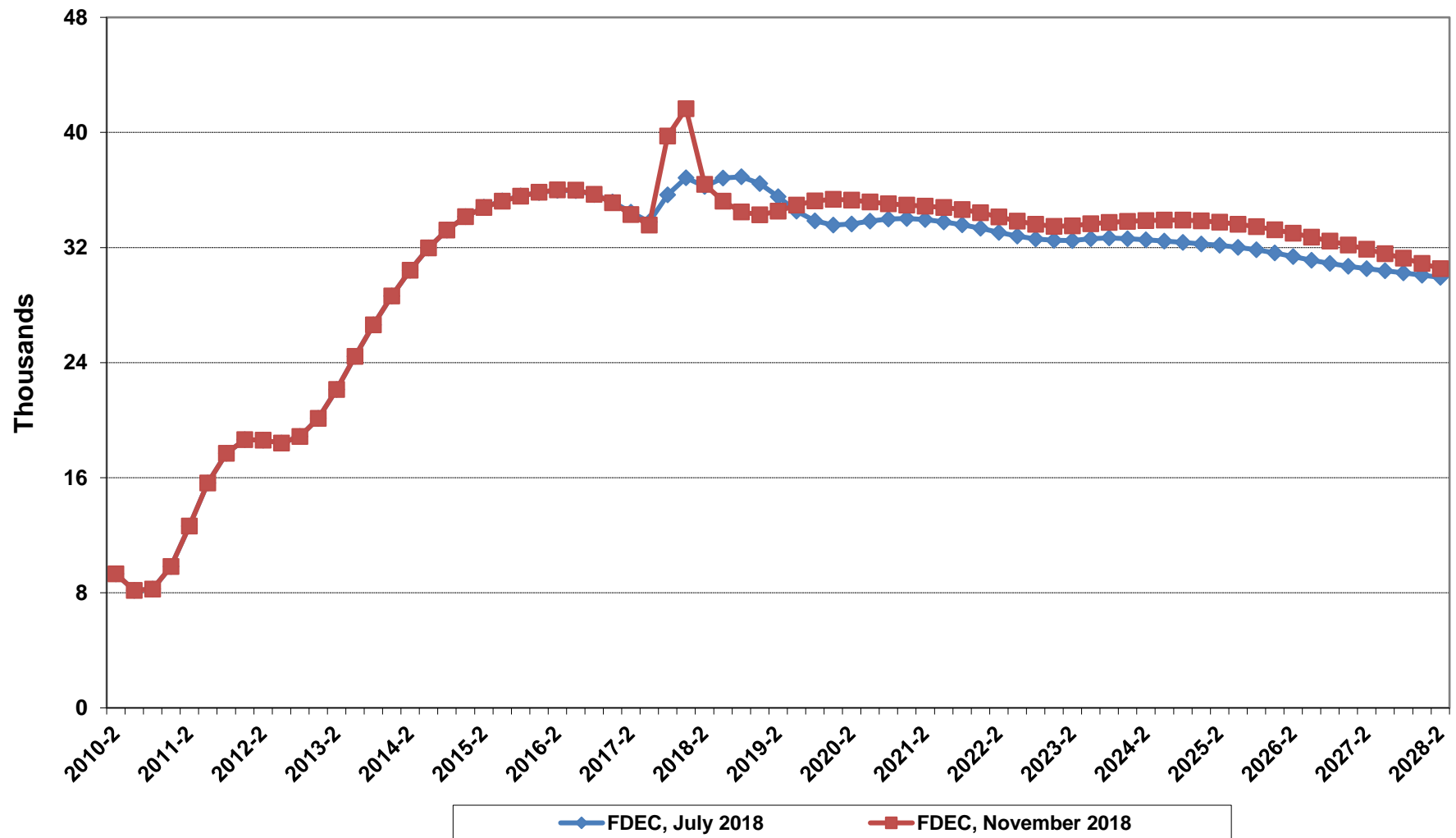
# Florida Resident Households



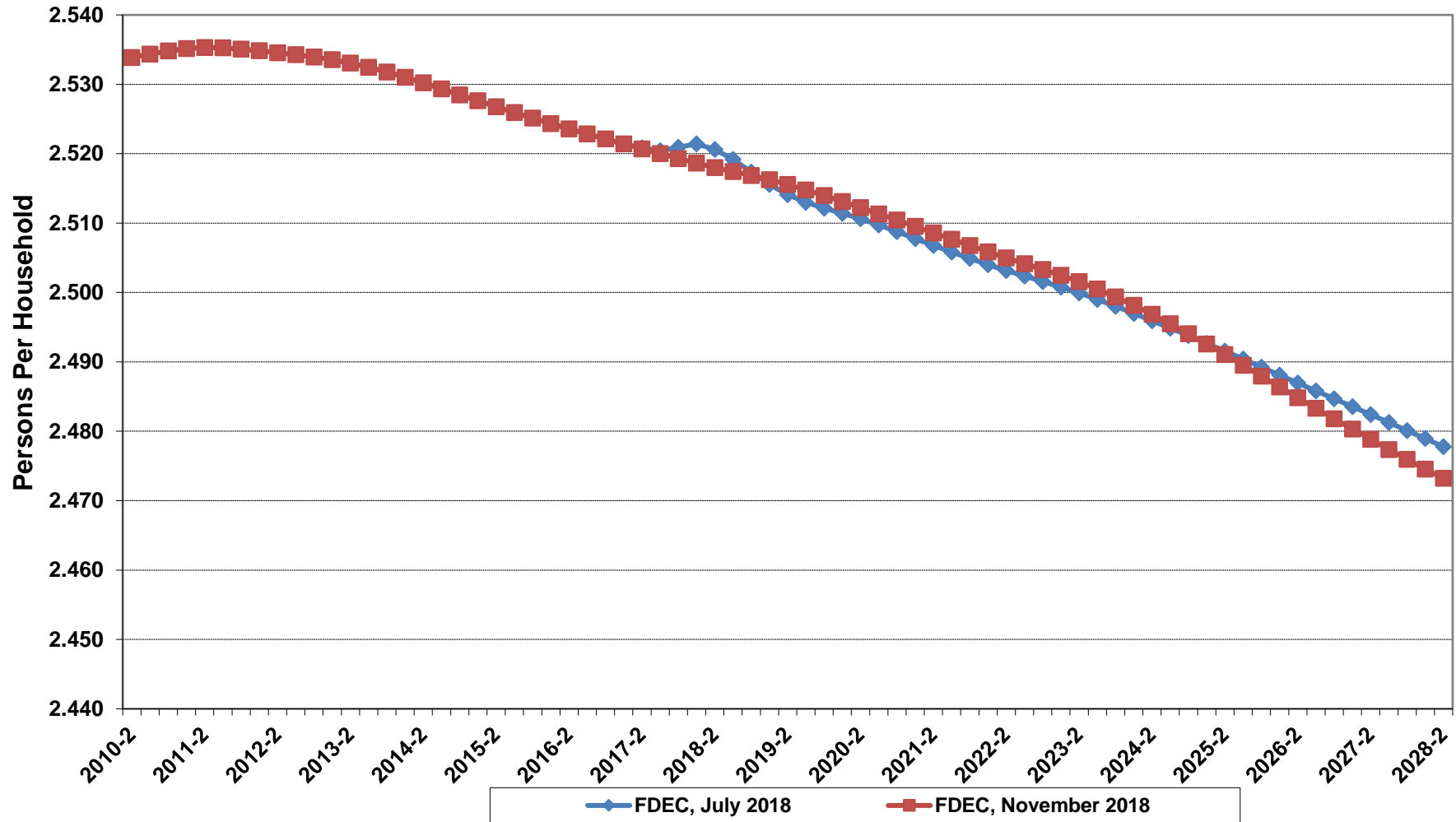
# Growth In Florida Resident Households



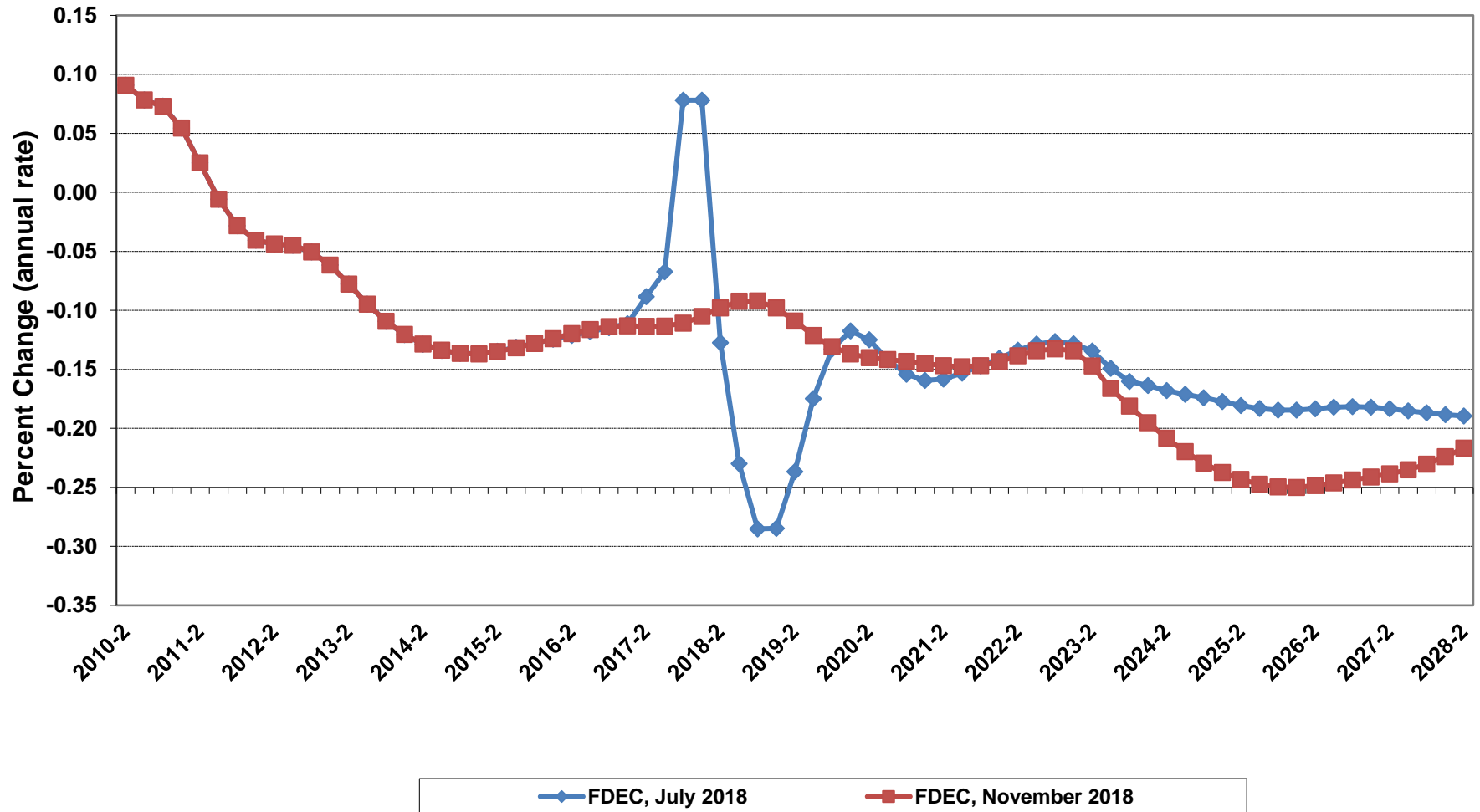
# Net Change In Florida Resident Households



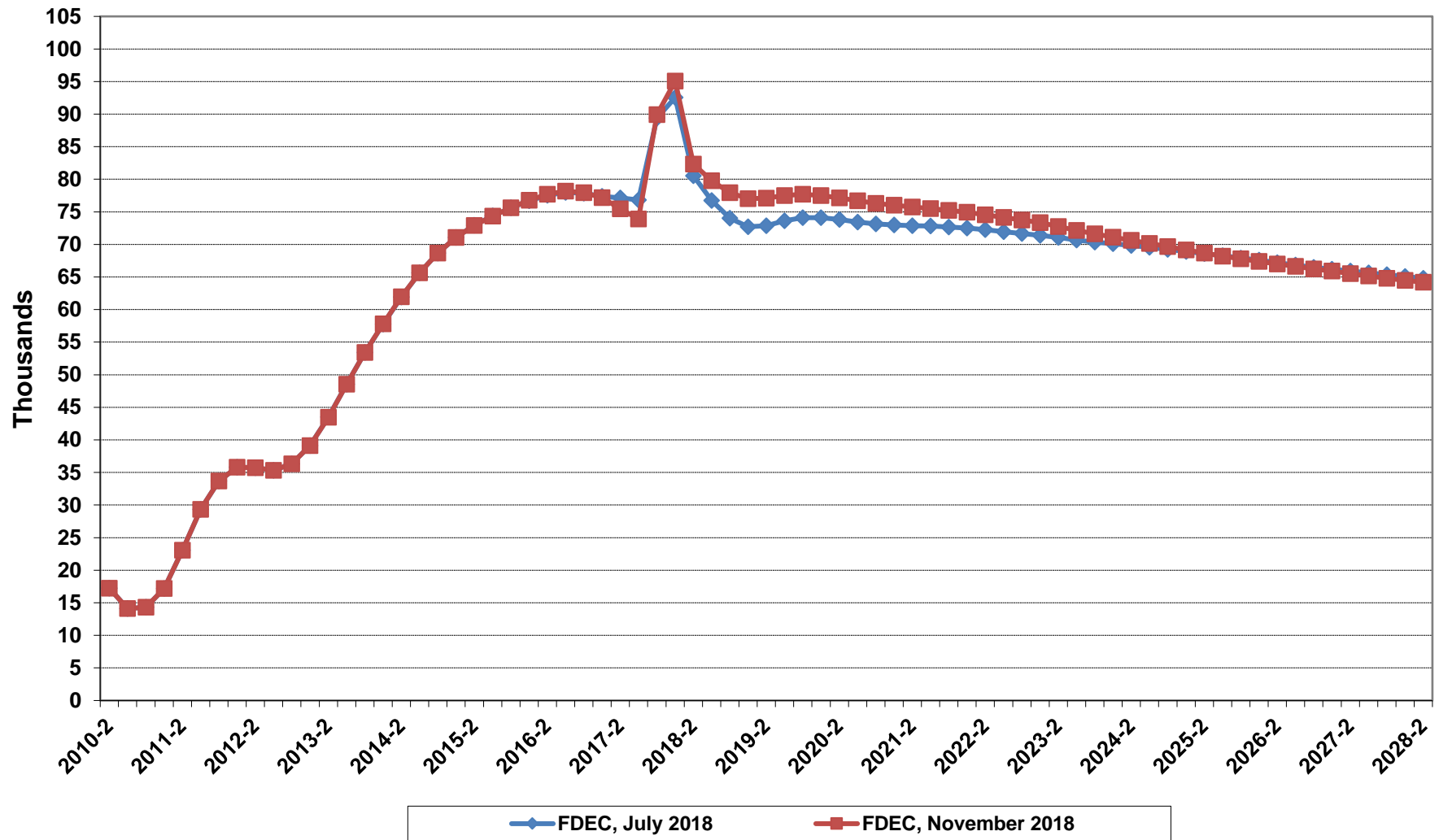
# Florida Average Household Size



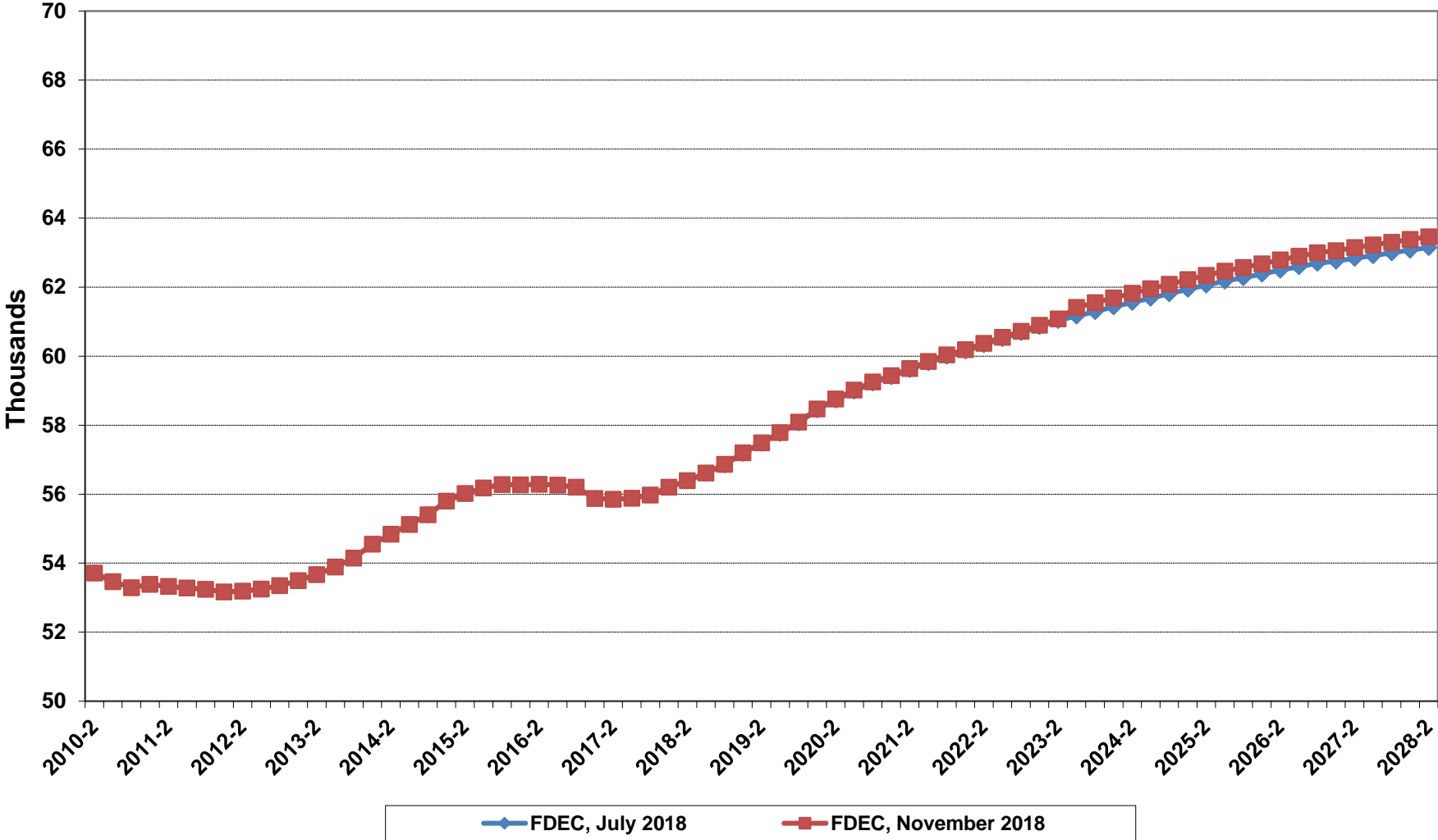
# Growth In Florida Household Size



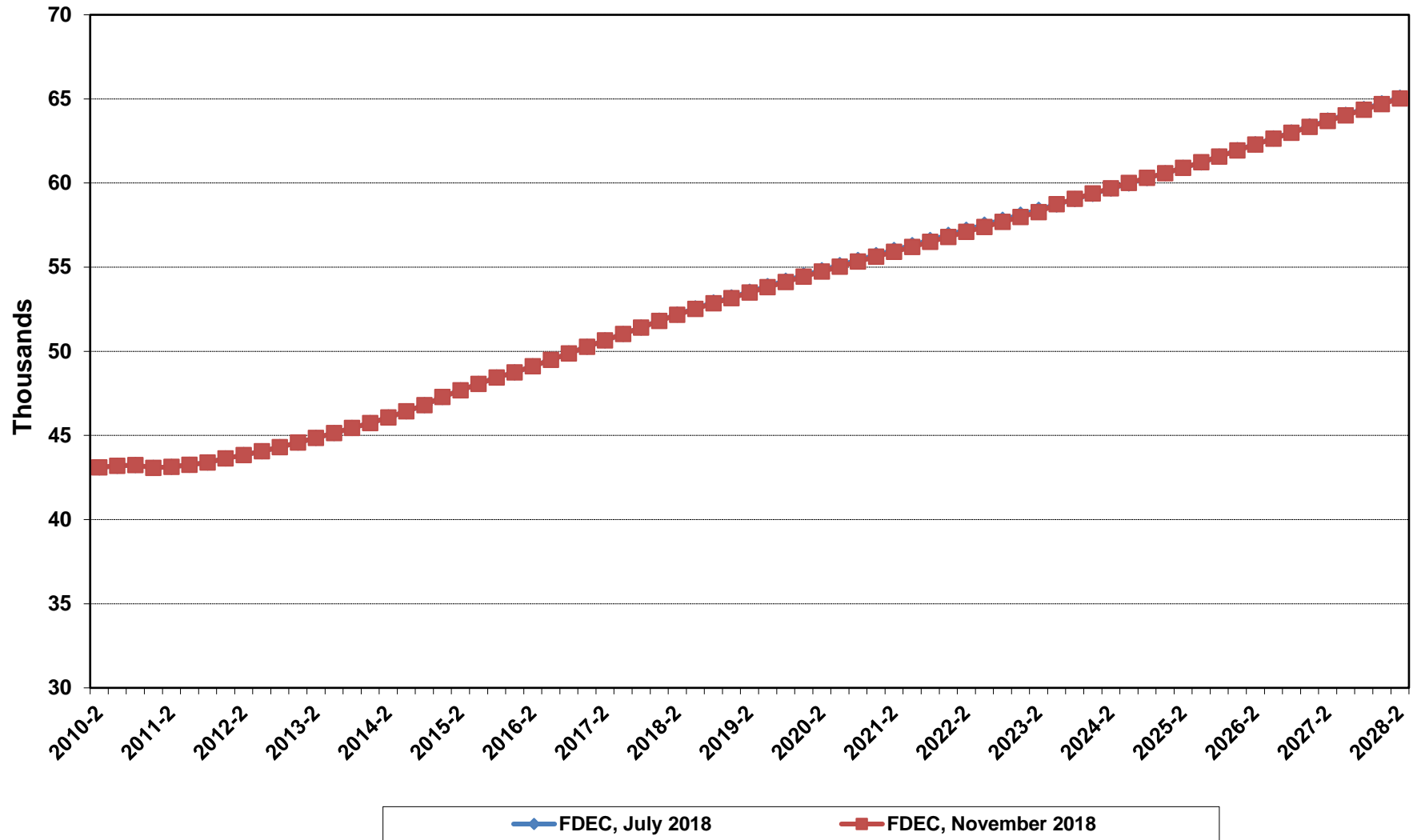
# Florida Net Migration



# Florida Resident Births

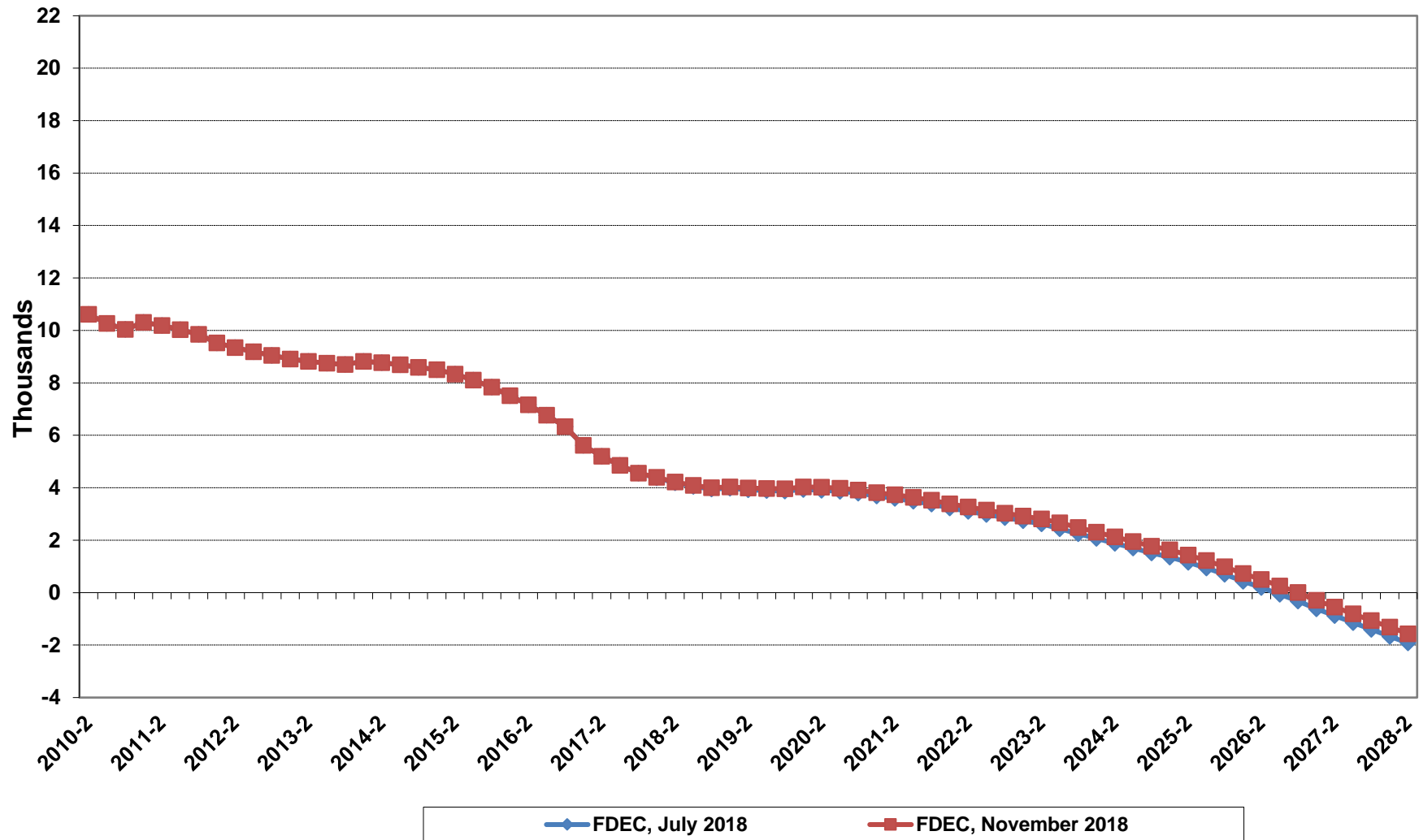


# Florida Resident Deaths

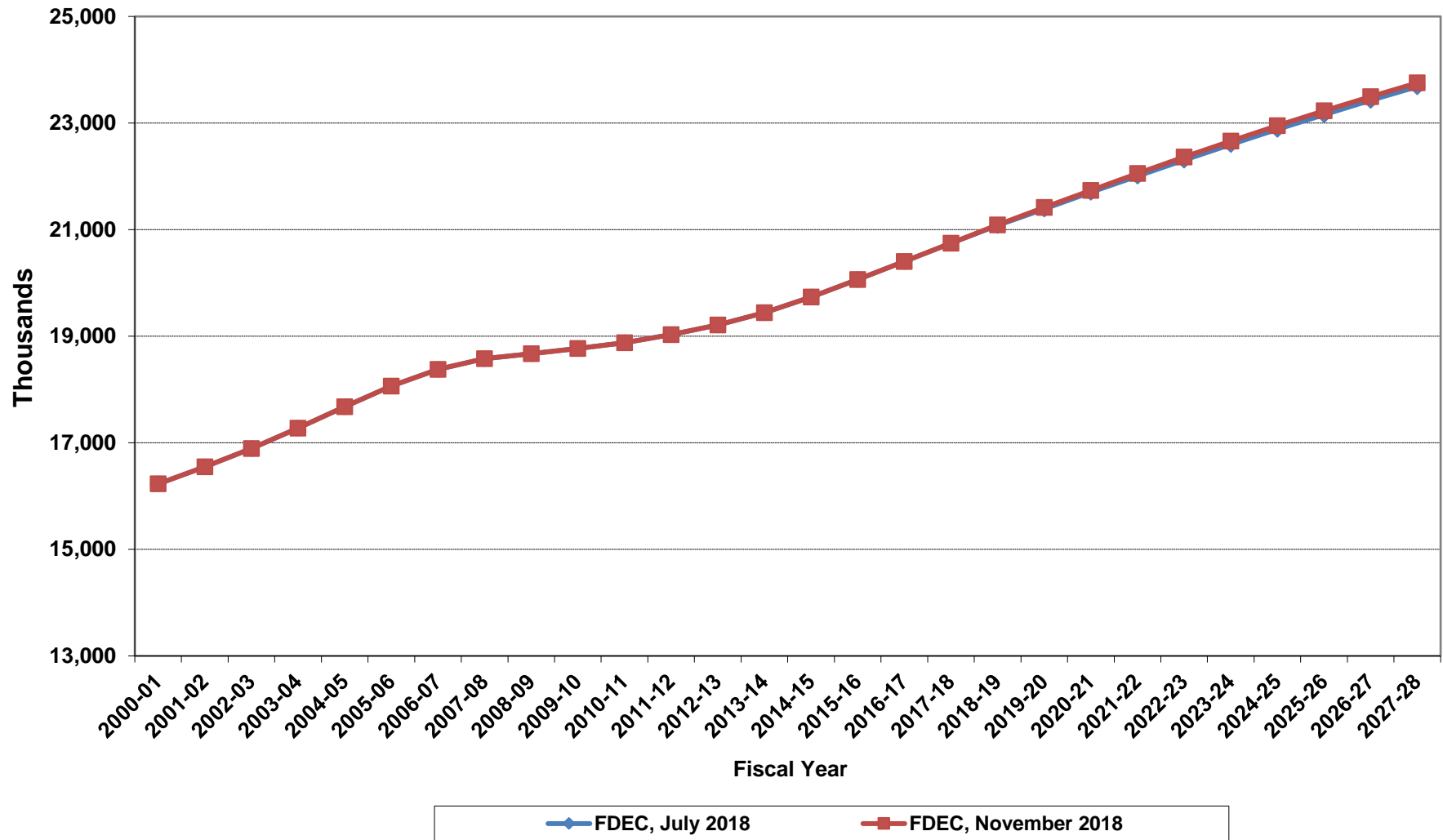




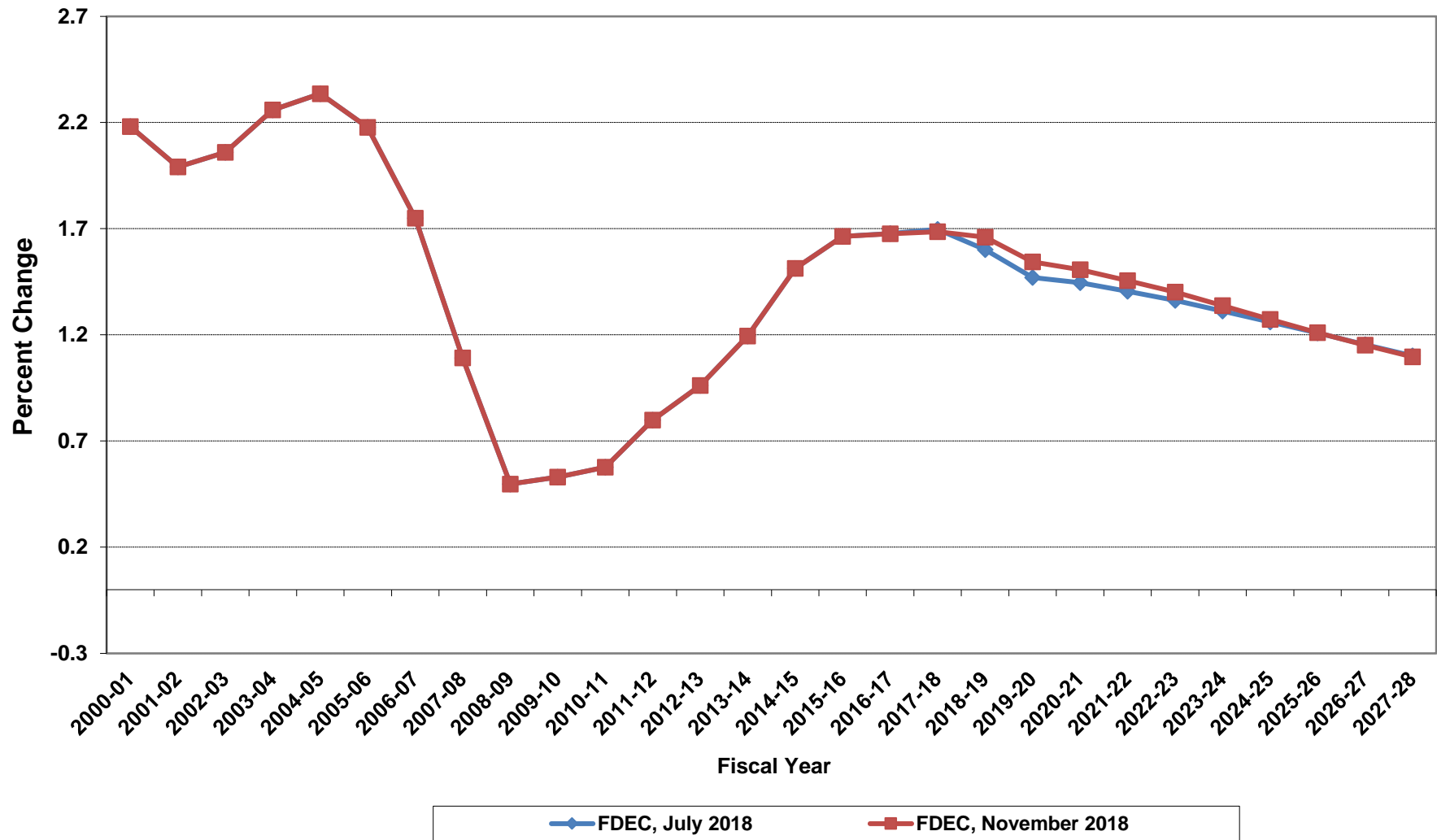
# Florida Net Natural Increase



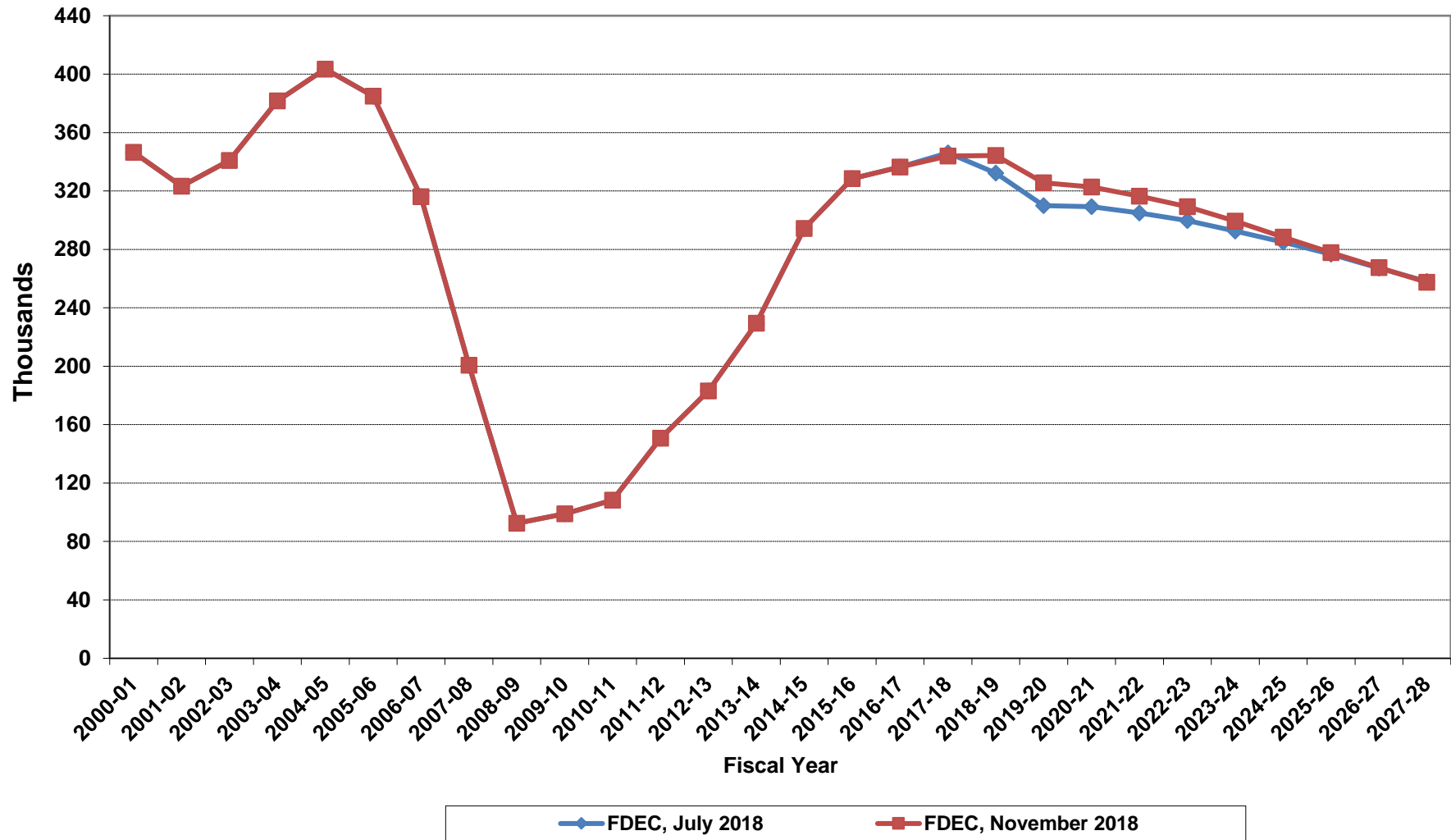
# Florida Resident Population



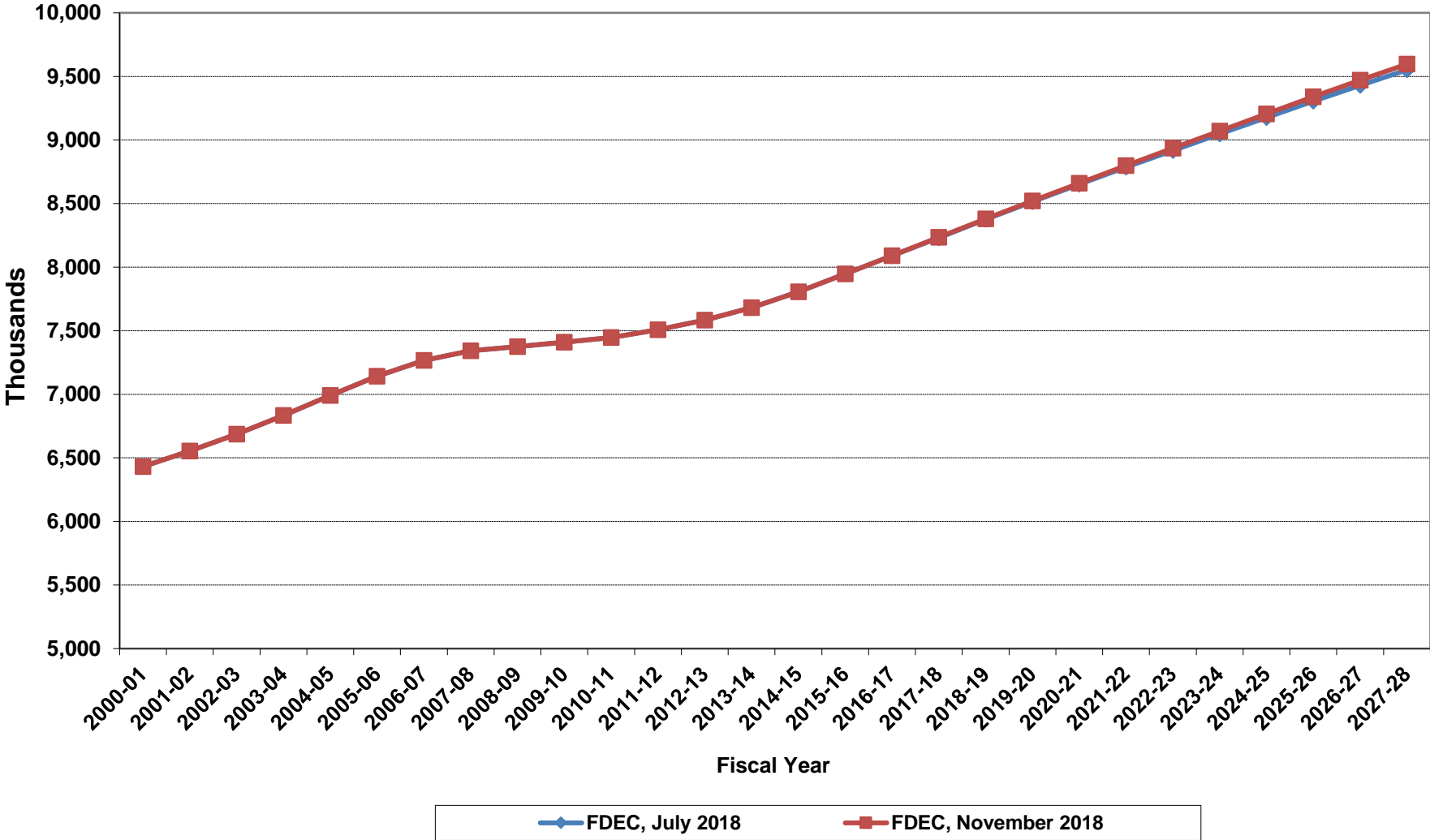
# Growth In Florida Resident Population



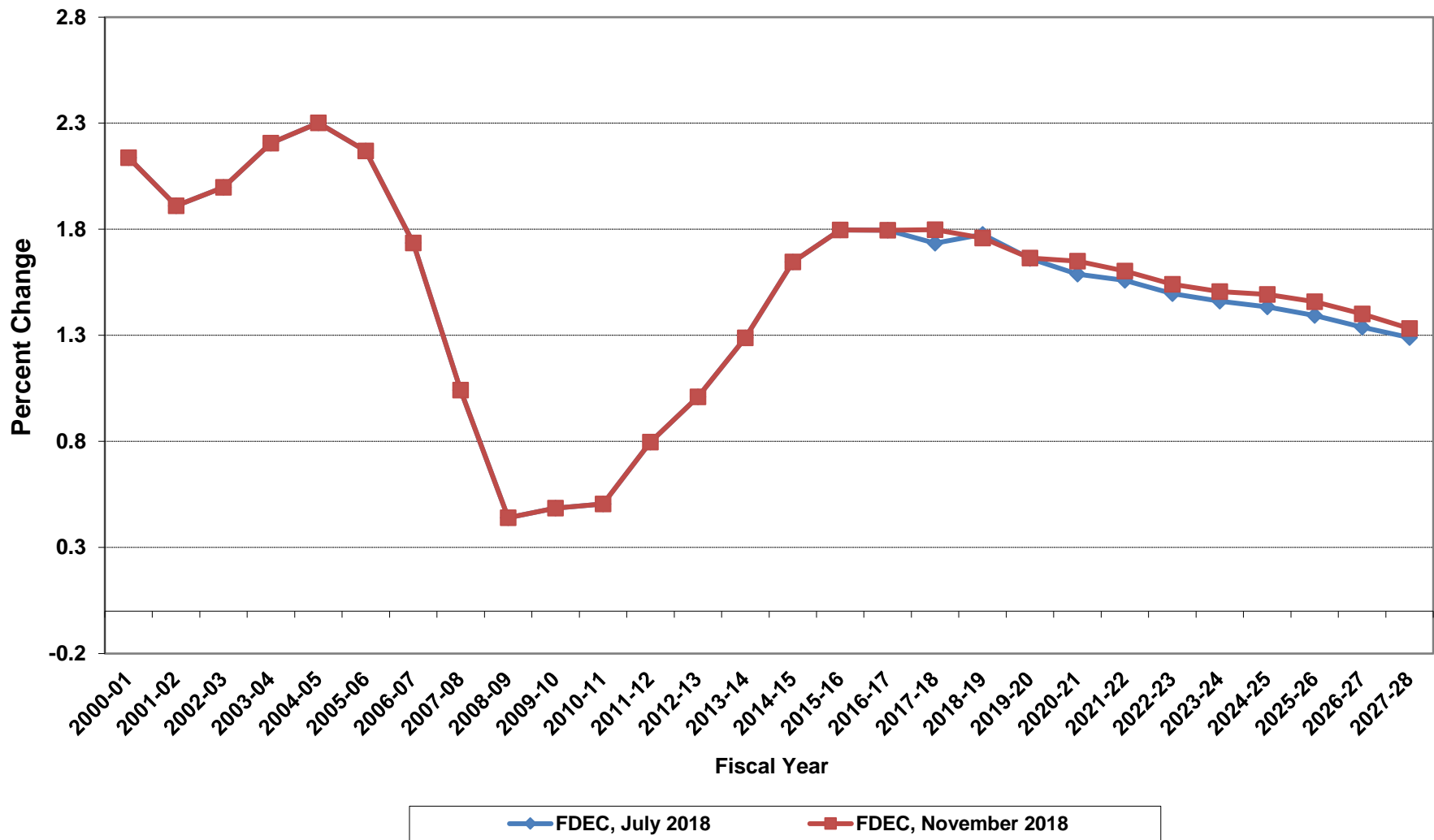
# Net Change In Florida Resident Population



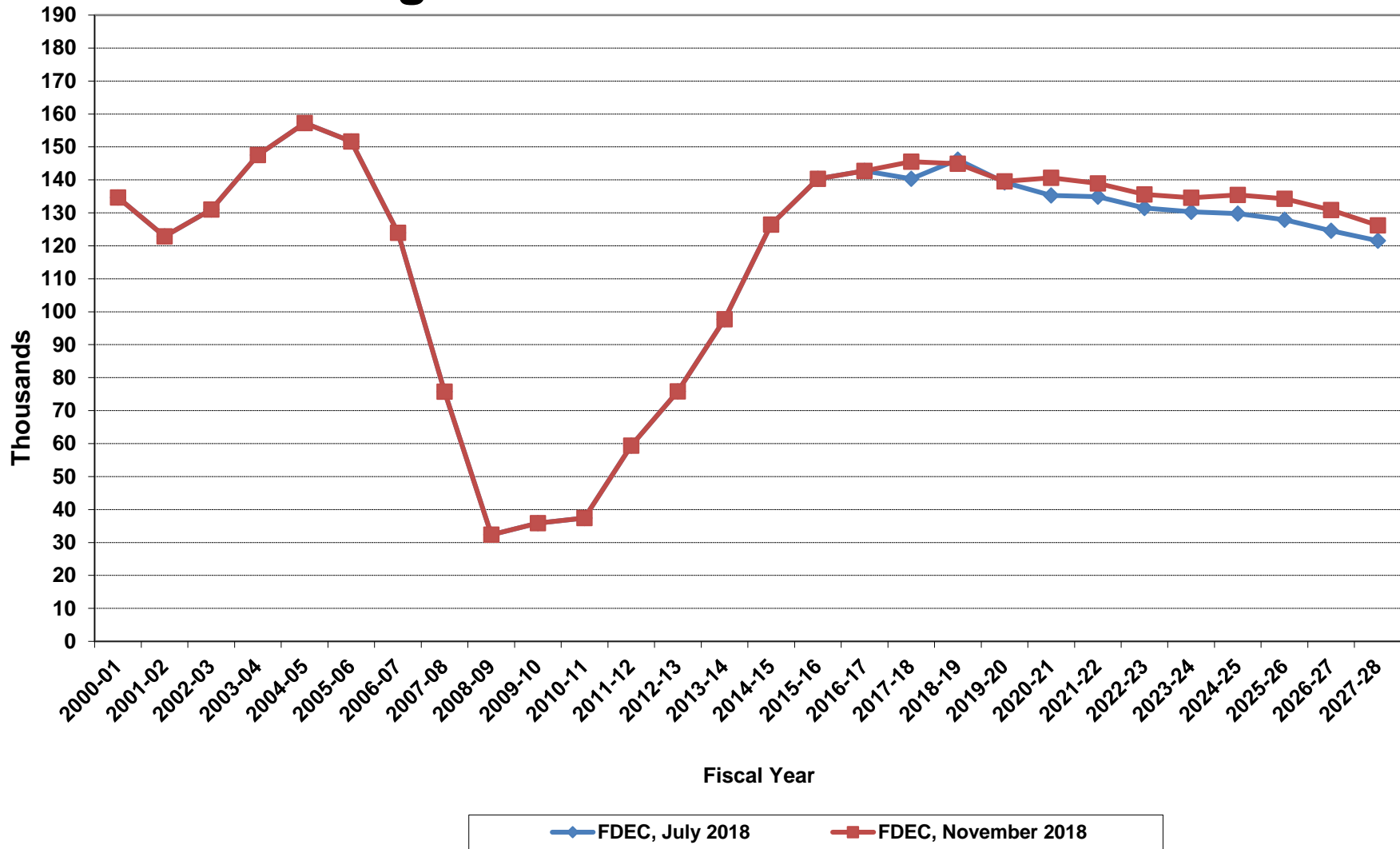
# Florida Resident Households



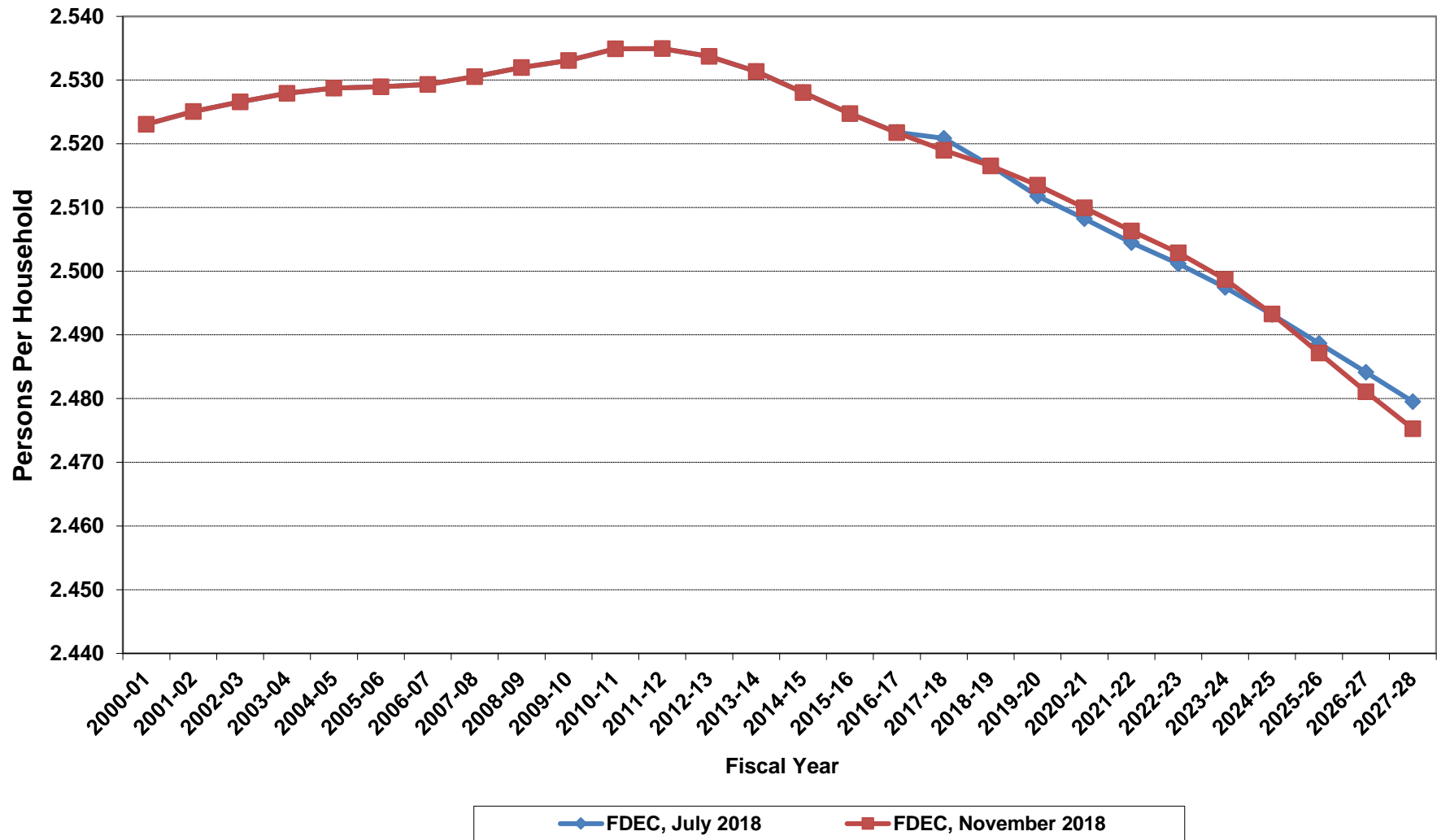
# Growth In Florida Resident Households



# Net Change In Florida Resident Households

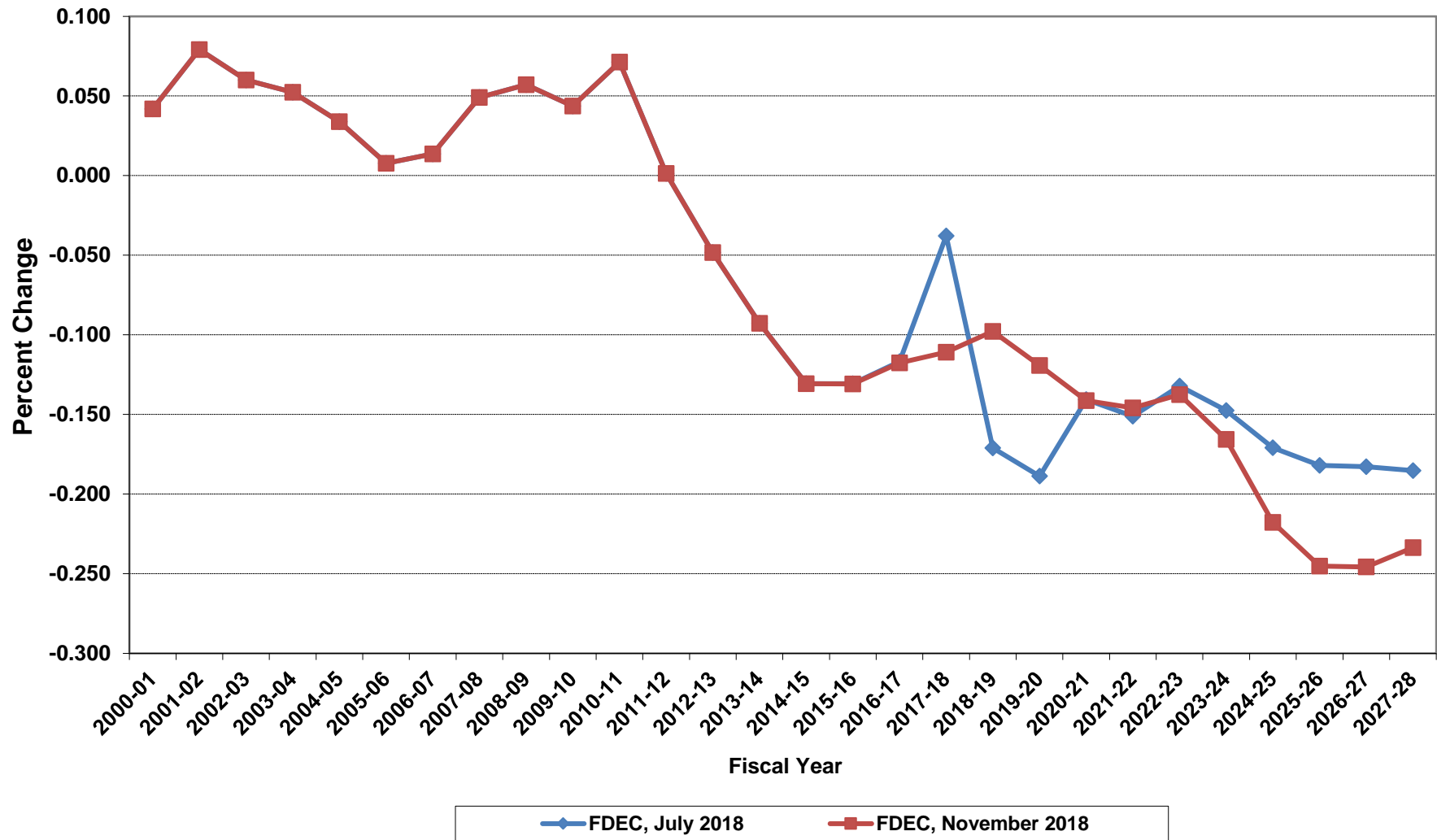


# Average Florida Household Size

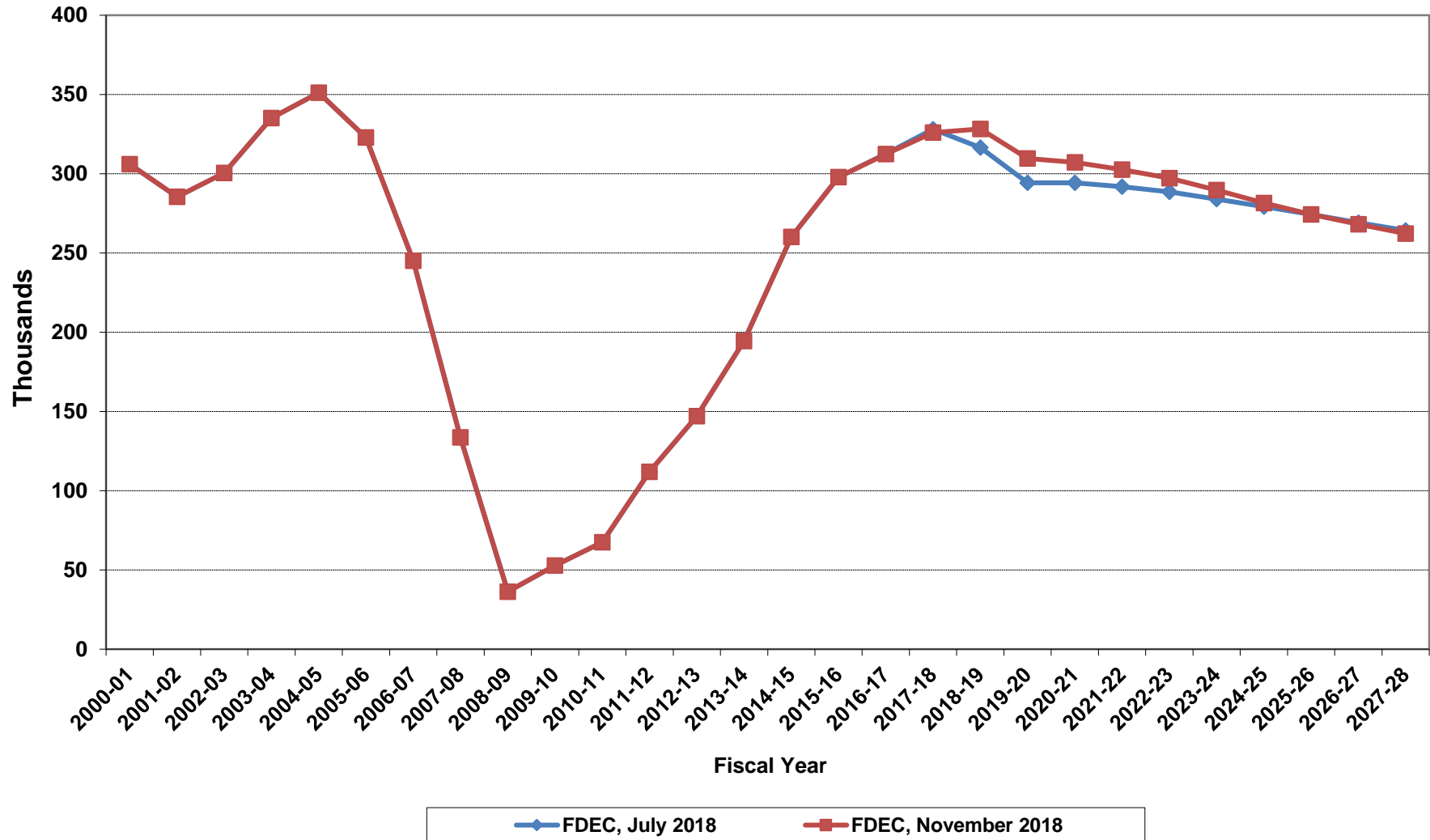




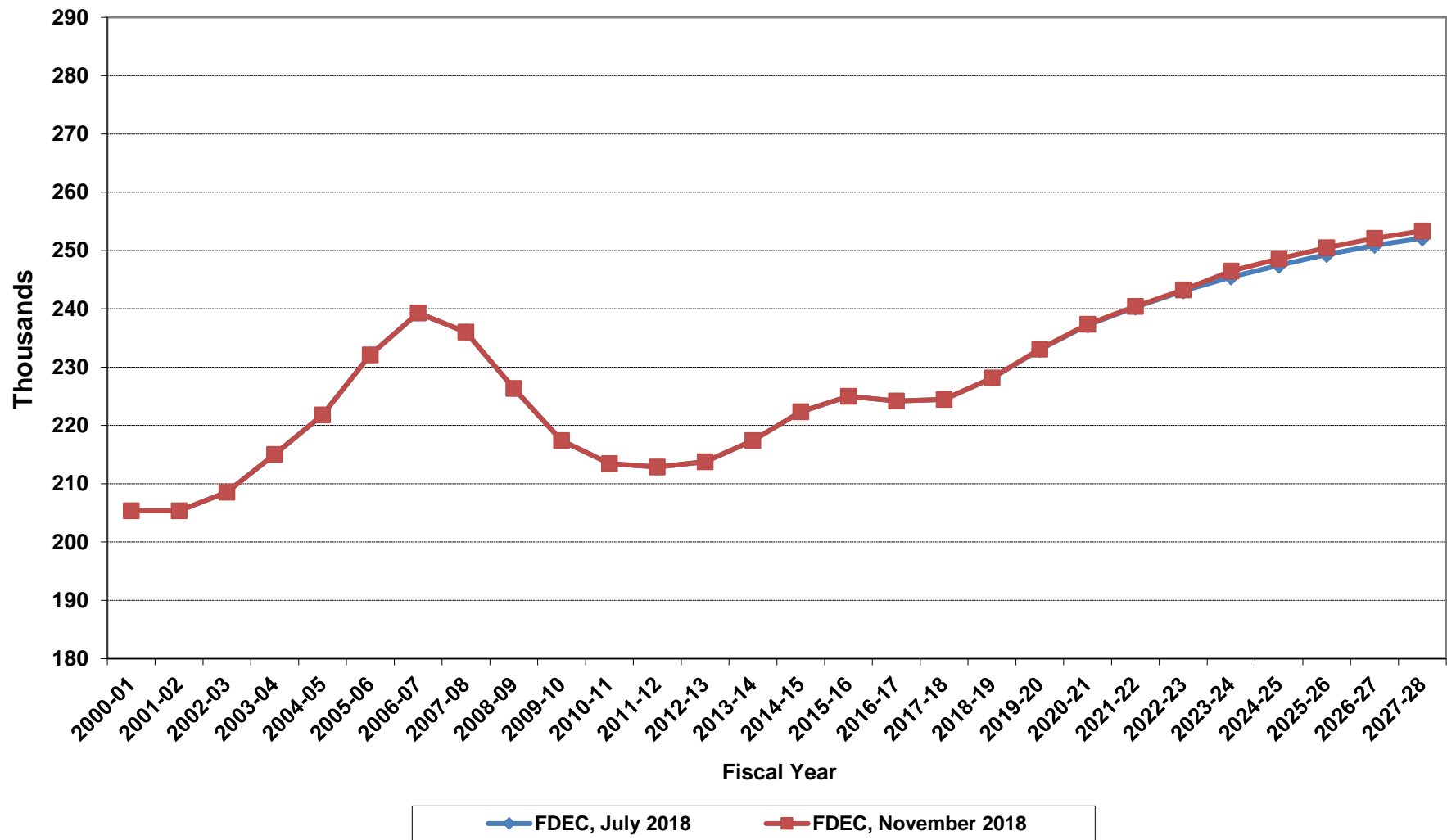
# Growth In Average Florida Household Size



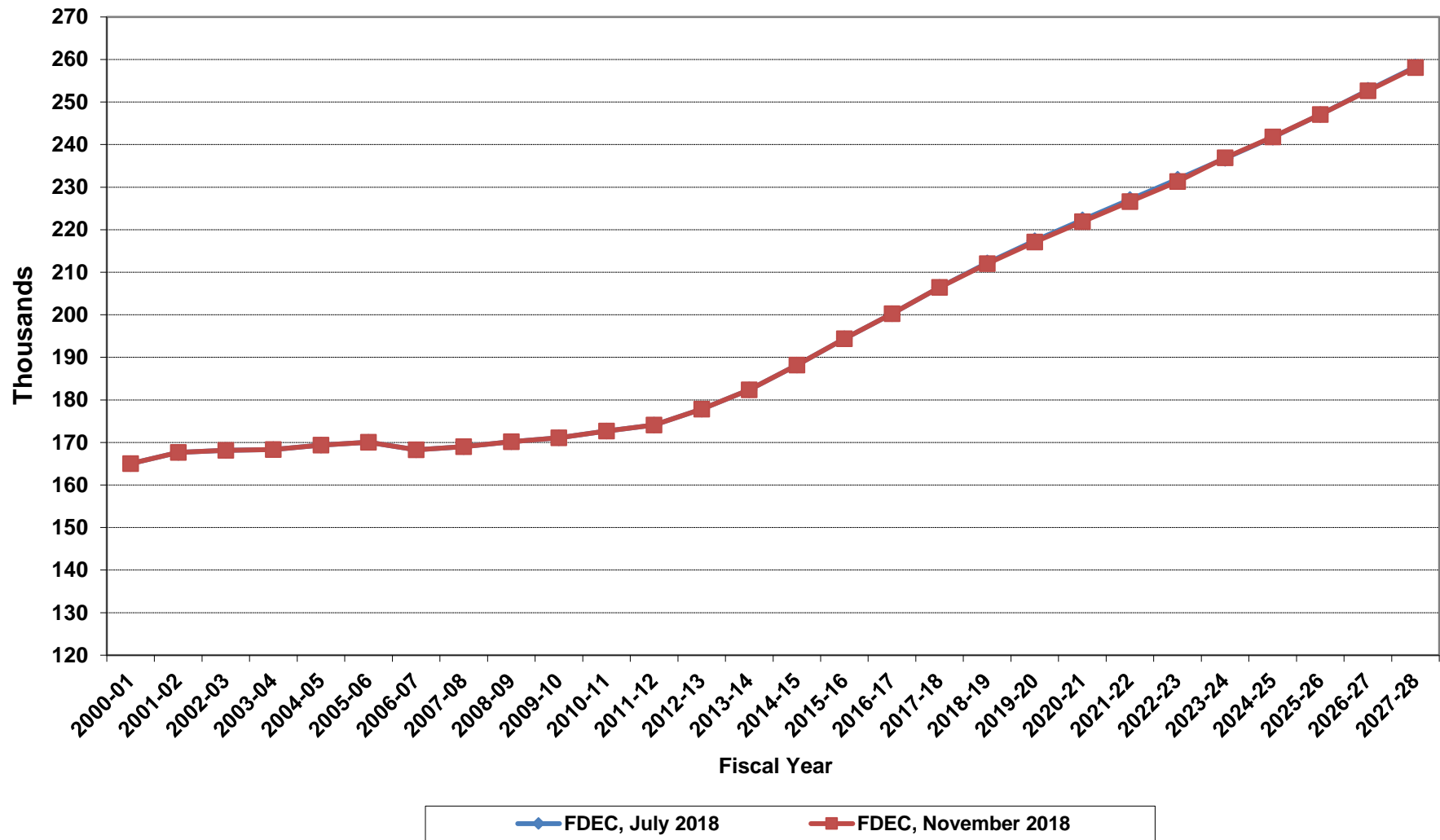
# Florida Net Migration



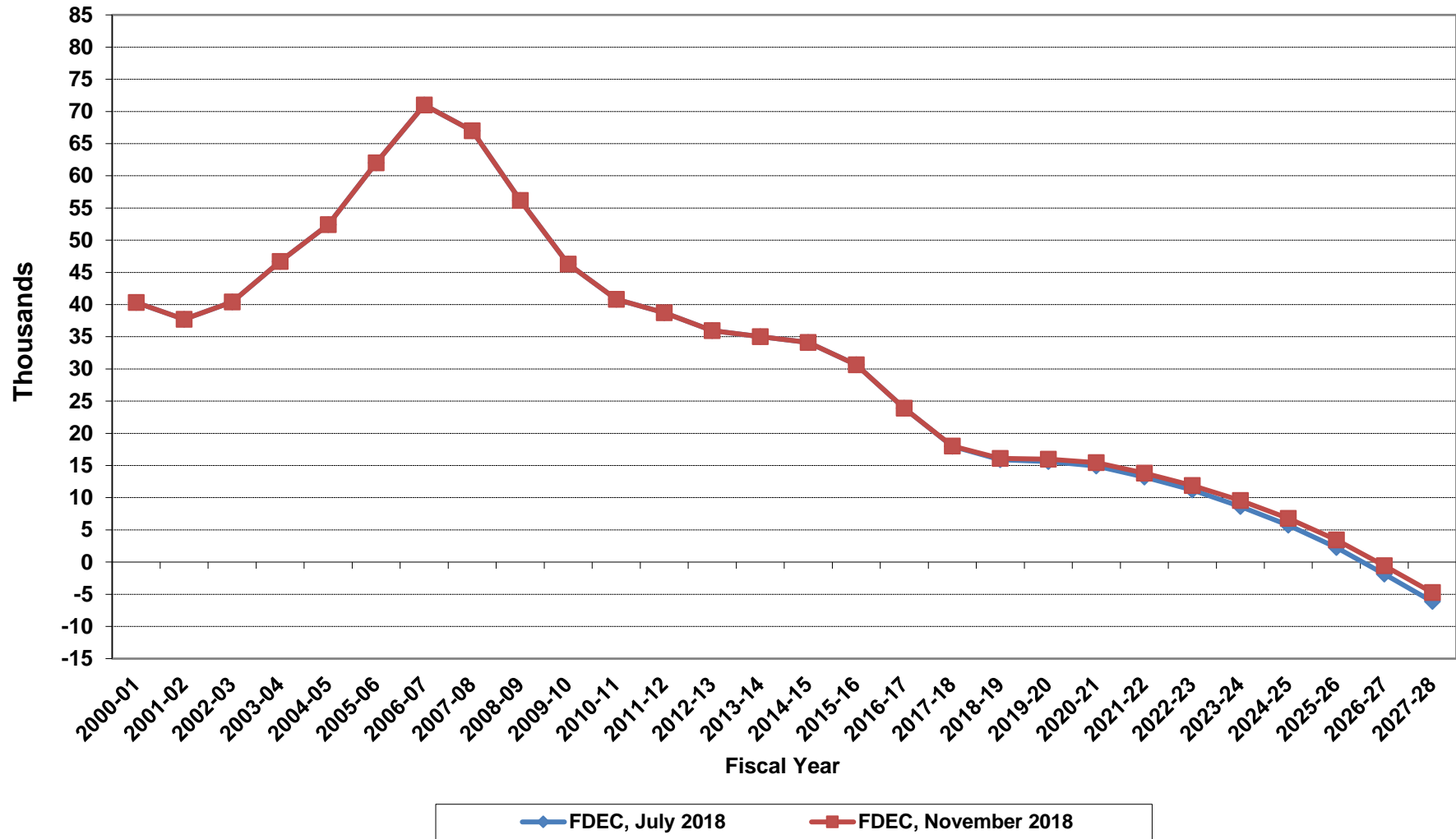
# Florida Resident Live Births



# Florida Resident Deaths



# Florida Net Natural Increase



**Florida Population and Components of Change**

<b>Fiscal Year</b>	<b>Population (End of Fiscal Year)</b>	<b>Growth Rate</b>	<b>Annual Change in Population</b>	<b>Births</b>	<b>Deaths</b>	<b>Net Natural Increase</b>	<b>Net Migration</b>
1950 - 51	2,981,346	6.50%	181,931	67,486	27,670	39,816	142,115
1951 - 52	3,155,442	5.84%	174,096	72,383	28,942	43,441	130,655
1952 - 53	3,312,521	4.98%	157,079	76,954	29,761	47,193	109,886
1953 - 54	3,504,323	5.79%	191,802	82,725	31,055	51,670	140,132
1954 - 55	3,747,400	6.94%	243,077	86,643	32,176	54,467	188,610
1955 - 56	4,046,062	7.97%	298,662	92,941	34,932	58,009	240,653
1956 - 57	4,370,045	8.01%	323,983	100,990	38,269	62,721	261,262
1957 - 58	4,629,510	5.94%	259,465	105,972	41,911	64,061	195,404
1958 - 59	4,812,270	3.95%	182,760	110,409	43,674	66,735	116,025
1959 - 60	4,998,508	3.87%	186,238	114,428	46,057	68,371	117,867
1960 - 61	5,185,913	3.75%	187,405	116,449	48,388	68,061	119,344
1961 - 62	5,367,899	3.51%	181,986	116,120	50,346	65,774	116,212
1962 - 63	5,553,522	3.46%	185,623	114,709	54,453	60,256	125,367
1963 - 64	5,728,499	3.15%	174,977	115,002	56,229	58,773	116,204
1964 - 65	5,881,195	2.67%	152,696	110,515	57,734	52,781	99,915
1965 - 66	6,065,768	3.14%	184,573	104,367	61,217	43,150	141,423
1966 - 67	6,249,674	3.03%	183,906	101,209	62,577	38,632	145,274
1967 - 68	6,441,756	3.07%	192,082	100,320	66,134	34,186	157,896
1968 - 69	6,633,546	2.98%	191,790	104,286	71,285	33,001	158,789
1969 - 70	6,861,118	3.43%	227,572	111,511	73,831	37,680	189,892
1970 - 71	7,233,583	5.43%	372,465	117,012	75,354	41,658	330,807
1971 - 72	7,681,540	6.19%	447,957	113,568	79,717	33,851	414,106
1972 - 73	8,157,883	6.20%	476,343	107,804	86,232	21,572	454,771
1973 - 74	8,515,208	4.38%	357,325	109,366	88,459	20,907	336,418
1974 - 75	8,648,587	1.57%	133,379	108,686	87,224	21,462	111,917
1975 - 76	8,782,975	1.55%	134,388	104,022	88,129	15,893	118,495
1976 - 77	8,972,678	2.16%	189,703	107,623	90,443	17,180	172,523
1977 - 78	9,225,527	2.82%	252,849	112,268	93,383	18,885	233,964
1978 - 79	9,523,728	3.23%	298,201	116,393	96,801	19,592	278,609
1979 - 80	9,914,652	4.10%	390,924	126,673	101,048	25,625	365,299
1980 - 81	10,212,969	3.01%	298,317	135,560	107,562	27,998	270,319
1981 - 82	10,492,851	2.74%	279,882	141,593	108,644	32,949	246,933
1982 - 83	10,748,466	2.44%	255,615	146,853	110,497	36,356	219,259
1983 - 84	11,065,911	2.95%	317,445	151,748	113,939	37,809	279,636
1984 - 85	11,405,533	3.07%	339,622	159,819	117,539	42,280	297,342
1985 - 86	11,740,069	2.93%	334,536	165,857	122,453	43,404	291,132
1986 - 87	12,083,241	2.92%	343,172	170,819	124,946	45,873	297,299
1987 - 88	12,410,339	2.71%	327,098	179,541	129,413	50,128	276,970
1988 - 89	12,723,719	2.53%	313,380	188,390	131,992	56,398	256,982
1989 - 90	13,017,296	2.31%	293,577	197,181	132,503	64,678	228,899
1990 - 91	13,326,892	2.38%	309,596	197,180	134,093	63,087	246,509
1991 - 92	13,552,021	1.69%	225,129	191,810	136,280	55,530	169,599
1992 - 93	13,802,571	1.85%	250,550	192,051	142,087	49,964	200,586
1993 - 94	14,120,323	2.30%	317,752	191,840	146,101	45,739	272,013
1994 - 95	14,406,418	2.03%	286,095	189,292	149,161	40,131	245,964
1995 - 96	14,701,040	2.05%	294,622	188,584	152,570	36,014	258,608
1996 - 97	15,012,615	2.12%	311,575	190,587	153,067	37,520	274,055
1997 - 98	15,310,069	1.98%	297,454	194,242	155,080	39,162	258,292
1998 - 99	15,680,164	2.42%	370,095	195,897	159,988	35,909	334,186
1999 - 00	16,069,889	2.49%	389,725	200,302	162,489	37,813	351,912
2000 - 01	16,385,615	1.96%	315,726	205,798	164,919	40,879	274,847
2001 - 02	16,718,076	2.03%	332,461	205,164	167,812	37,352	295,109
2002 - 03	17,074,258	2.13%	356,182	208,403	168,079	40,324	315,858
2003 - 04	17,475,944	2.35%	401,686	215,298	168,302	46,996	354,690
2004 - 05	17,876,215	2.29%	400,271	221,533	169,302	52,231	348,040
2005 - 06	18,236,885	2.02%	360,670	232,019	170,303	61,716	298,954
2006 - 07	18,501,231	1.45%	264,346	239,635	168,117	71,518	192,828
2007 - 08	18,636,837	0.73%	135,606	236,065	168,966	67,099	68,507
2008 - 09	18,711,844	0.40%	75,007	226,337	170,615	55,722	19,285
2009 - 10	18,826,492	0.61%	114,648	217,408	171,122	46,286	68,362

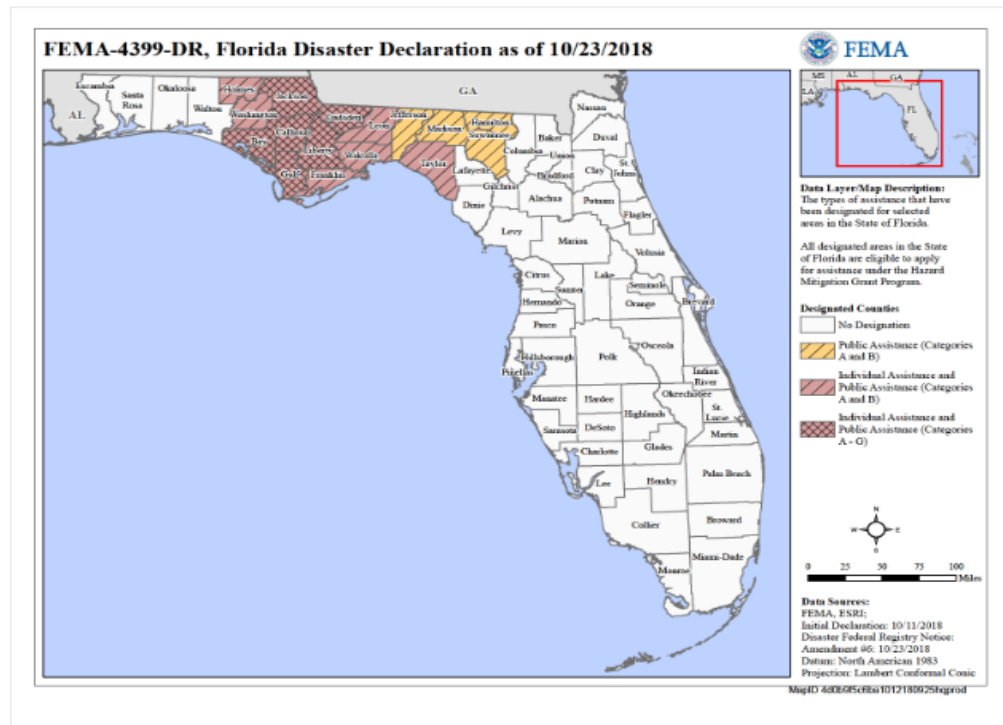
**Florida Population and Components of Change**

<b>Fiscal Year</b>	<b>Population (End of Fiscal Year)</b>	<b>Growth Rate</b>	<b>Annual Change in Population</b>	<b>Births</b>	<b>Deaths</b>	<b>Net Natural Increase</b>	<b>Net Migration</b>
2010 - 11	18,941,739	0.61%	115,246	213,468	172,661	40,807	74,439
2011 - 12	19,118,951	0.94%	177,212	212,876	174,121	38,755	138,457
2012 - 13	19,314,348	1.02%	195,397	213,762	177,807	35,955	159,442
2013 - 14	19,580,051	1.38%	265,703	217,422	182,383	35,039	230,664
2014 - 15	19,897,092	1.62%	317,041	222,338	188,216	34,122	282,919
2015 - 16	20,233,743	1.69%	336,651	225,014	194,385	30,629	306,022
2016 - 17	20,563,613	1.63%	329,870	224,193	200,274	23,919	305,951
2017 - 18	20,925,620	1.76%	362,008	224,450	206,422	18,028	343,980
2018 - 19	21,251,692	1.56%	326,072	228,163	212,040	16,123	309,949
2019 - 20	21,577,332	1.53%	325,640	233,091	217,108	15,983	309,657
2020 - 21	21,896,745	1.48%	319,412	237,350	221,907	15,443	303,969
2021 - 22	22,209,943	1.43%	313,199	240,433	226,617	13,816	299,383
2022 - 23	22,514,656	1.37%	304,713	243,241	231,330	11,911	292,802
2023 - 24	22,808,361	1.30%	293,705	246,463	236,881	9,582	284,123
2024 - 25	23,091,420	1.24%	283,059	248,600	241,809	6,791	276,268
2025 - 26	23,364,006	1.18%	272,586	250,498	247,048	3,450	269,136
2026 - 27	23,626,498	1.12%	262,492	252,092	252,667	-575	263,067
2027 - 28	23,879,233	1.07%	252,735	253,372	258,118	-4,746	257,481
2028 - 29	24,123,189	1.02%	243,956	254,594	263,335	-8,741	252,697
2029 - 30	24,359,267	0.98%	236,078	255,724	268,407	-12,683	248,761
2030 - 31	24,589,276	0.94%	230,009	256,844	273,712	-16,868	246,877
2031 - 32	24,812,752	0.91%	223,476	257,871	279,295	-21,424	244,900
2032 - 33	25,029,508	0.87%	216,756	258,967	284,806	-25,839	242,595
2033 - 34	25,240,236	0.84%	210,728	260,003	290,203	-30,200	240,928
2034 - 35	25,445,267	0.81%	205,031	260,780	295,496	-34,716	239,747
2035 - 36	25,644,526	0.78%	199,259	261,423	300,721	-39,298	238,557
2036 - 37	25,837,367	0.75%	192,841	262,406	305,793	-43,387	236,228
2037 - 38	26,025,192	0.73%	187,825	263,543	310,788	-47,245	235,070
2038 - 39	26,208,615	0.70%	183,423	264,602	315,696	-51,094	234,517

# Florida Hurricane Michael (DR-4399)

Incident Period: October 07, 2018 - October 19, 2018

Major Disaster Declaration declared on October 11, 2018



Florida Disaster Counties			
	April 1, 2018 Population		
	Population	% of Disaster Counties	% of State Total
<b>Public Assistance</b>	<b>93,706</b>	<b>11.5%</b>	<b>0.4%</b>
Hamilton	14,621	1.8%	0.1%
Jefferson	14,733	1.8%	0.1%
Madison	19,473	2.4%	0.1%
Suwannee	44,879	5.5%	0.2%
<b>Individual Assistance and Public Assistance (Categories A&amp;B)</b>	<b>403,829</b>	<b>49.4%</b>	<b>1.9%</b>
Franklin	12,009	1.5%	0.1%
Holmes	20,133	2.5%	0.1%
Leon	292,332	35.8%	1.4%
Taylor	22,283	2.7%	0.1%
Wakulla	31,943	3.9%	0.2%
Washington	25,129	3.1%	0.1%
<b>Individual Assistance and Public Assistance (Categories A-G)</b>	<b>319,969</b>	<b>39.1%</b>	<b>1.5%</b>
Bay	181,199	22.2%	0.9%
Calhoun	15,093	1.8%	0.1%
Gadsden	47,828	5.9%	0.2%
Gulf	16,499	2.0%	0.1%
Jackson	50,435	6.2%	0.2%
Liberty	8,915	1.1%	0.0%
<b>Total of Above Counties</b>	<b>817,504</b>	<b>100.0%</b>	
<b>Total for State</b>	<b>20,840,568</b>		<b>3.9%</b>