

**Demographic Estimating Conference
Executive Summary
March 3, 2021**

The Demographic Estimating Conference met on March 1st and 3rd, 2021, to adopt a new population forecast. The new estimates reflect the most recent demographic and economic-related data and trends.

The world-wide pandemic and its accompanying economic fallout continues to color this forecast. Population growth is still estimated to have slowed between April 1, 2020 and April 1, 2021, but the growth rate was increased relative to last conference, reflecting stronger net migration. Natural increase, the other component of population growth, was more negative than expected, with fewer births and increased deaths.

Compared to the last conference, the short-term population projections were increased reflecting strengthened domestic net-migration projections supported by an apparent shift in lifestyle preferences away from the more dense urban areas found elsewhere. In addition, natural increase is expected to remain negative throughout the forecast horizon as deaths continue to outpace births. Overall, the forecast is expected to return to a more typical pattern, with growth expected to slow slightly each year. Average household size was held relatively constant in the near-term, reflecting the economic impact from the pandemic on household dynamics and structure; all else being equal, larger household sizes lead to a lower number of households.

April 1	Population	Change from the Prior Period		Change from the Prior Forecast
		Percent	Numeric	
2015	19,815,183	1.58%	307,814	
2016	20,148,654	1.68%	333,471	
2017	20,484,142	1.67%	335,488	
2018	20,840,568	1.74%	356,426	
2019	21,208,589	1.77%	368,021	
2020	21,596,068	1.83%	387,479	
2021	21,925,785	1.53%	329,717	31,866
2022	22,245,429	1.46%	319,644	21,250
2023	22,555,004	1.39%	309,575	22,310
2024	22,852,119	1.32%	297,115	23,996
2025	23,138,553	1.25%	286,434	26,164
2026	23,416,452	1.20%	277,899	30,858
2027	23,683,466	1.14%	267,014	35,704
2028	23,938,576	1.08%	255,110	39,676
2029	24,184,019	1.03%	245,443	44,315
2030	24,419,127	0.97%	235,108	47,586

Between April 1, 2020 and April 1, 2025, population growth is expected to average 308,497 net new residents per year (845 per day), representing a compound growth rate of 1.39% over this five-year time horizon. These increases are analogous to adding a city slightly larger than Orlando every year.

Of note, the population estimates developed by the U.S. Census Bureau continue to be higher than the official state estimates adopted by the Demographic Estimating Conference, although the difference has narrowed considerably. In the latest comparable set of estimates (July 1, 2020), the difference was 50,940 persons. The Legislative Office of Economic and Demographic Research is continuing its efforts to identify how the differing underlying methodologies contribute to the gap between the two sets of estimates. In addition, after the 2020 Census counts are released, the historical series will be re-estimated to take this new data point into consideration.

Florida Demographic Estimating Conference

Tables
Conference Packet

March 3, 2021

Florida Resident Population

April 1

Year	Florida Demographic Estimating Conference November 2020			Florida Demographic Estimating Conference March 2021		
	Population	% Change	Change	Population	% Change	Change
2000	15,982,824	2.58%	402,580	15,982,824	2.58%	402,580
2001	16,305,100	2.02%	322,276	16,305,100	2.02%	322,276
2002	16,634,256	2.02%	329,156	16,634,256	2.02%	329,156
2003	16,979,706	2.08%	345,450	16,979,706	2.08%	345,450
2004	17,374,824	2.33%	395,118	17,374,824	2.33%	395,118
2005	17,778,156	2.32%	403,332	17,778,156	2.32%	403,332
2006	18,154,475	2.12%	376,319	18,154,475	2.12%	376,319
2007	18,446,768	1.61%	292,293	18,446,768	1.61%	292,293
2008	18,613,905	0.91%	167,137	18,613,905	0.91%	167,137
2009	18,687,425	0.39%	73,520	18,687,425	0.39%	73,520
2010	18,801,332	0.61%	113,907	18,801,332	0.61%	113,907
2011	18,905,070	0.55%	103,738	18,905,070	0.55%	103,738
2012	19,074,434	0.90%	169,364	19,074,434	0.90%	169,364
2013	19,259,543	0.97%	185,109	19,259,543	0.97%	185,109
2014	19,507,369	1.29%	247,826	19,507,369	1.29%	247,826
2015	19,815,183	1.58%	307,814	19,815,183	1.58%	307,814
2016	20,148,654	1.68%	333,471	20,148,654	1.68%	333,471
2017	20,484,142	1.67%	335,488	20,484,142	1.67%	335,488
2018	20,840,568	1.74%	356,426	20,840,568	1.74%	356,426
2019	21,208,589	1.77%	368,021	21,208,589	1.77%	368,021
2020	21,596,068	1.83%	387,479	21,596,068	1.83%	387,479
Begins forecast						
2021	21,893,919	1.38%	297,851	21,925,785	1.53%	329,717
2022	22,224,179	1.51%	330,260	22,245,429	1.46%	319,644
2023	22,532,694	1.39%	308,515	22,555,004	1.39%	309,575
2024	22,828,123	1.31%	295,429	22,852,119	1.32%	297,115
2025	23,112,389	1.25%	284,266	23,138,553	1.25%	286,434
5-Year Averages						
2030	24,371,541	1.07%	251,830	24,419,127	1.08%	256,115
2035	25,426,202	0.85%	210,932	25,461,863	0.84%	208,547
2040	26,336,236	0.71%	182,007	26,356,415	0.69%	178,910
2045	27,142,823	0.61%	161,317	27,149,835	0.59%	158,684

Florida Resident Households

April 1

Year	Florida Demographic Estimating Conference November 2020			Florida Demographic Estimating Conference March 2021		
	Households	% Change	Change	Households	% Change	Change
2000	6,338,075	2.52%	155,729	6,338,075	2.65%	163,703
2001	6,467,215	2.04%	129,140	6,460,934	1.94%	122,859
2002	6,599,035	2.04%	131,820	6,586,806	1.95%	125,872
2003	6,737,370	2.10%	138,335	6,719,399	2.01%	132,593
2004	6,895,469	2.35%	158,099	6,872,318	2.28%	152,919
2005	7,056,889	2.34%	161,420	7,029,787	2.29%	157,469
2006	7,207,645	2.14%	150,756	7,178,486	2.12%	148,699
2007	7,312,907	1.46%	105,262	7,292,550	1.59%	114,064
2008	7,368,319	0.76%	55,412	7,354,880	0.85%	62,330
2009	7,386,570	0.25%	18,251	7,379,964	0.34%	25,084
2010	7,525,335	1.88%	138,765	7,420,802	0.55%	40,838
2011	7,456,791	-0.91%	-68,544	7,456,791	0.48%	35,989
2012	7,525,335	0.92%	68,544	7,525,335	0.92%	68,544
2013	7,602,417	1.02%	77,082	7,602,417	1.02%	77,082
2014	7,708,538	1.40%	106,121	7,708,538	1.40%	106,121
2015	7,840,780	1.72%	132,242	7,840,780	1.72%	132,242
2016	7,982,938	1.81%	142,158	7,982,938	1.81%	142,158
2017	8,125,176	1.78%	142,238	8,125,176	1.78%	142,238
2018	8,271,058	1.80%	145,882	8,271,058	1.80%	145,882
2019	8,427,696	1.89%	156,638	8,427,696	1.89%	156,638
2020	8,589,056	1.91%	161,360	8,589,056	1.91%	161,360
Begins forecast						
2021	8,709,140	1.40%	120,084	8,722,081	1.55%	133,025
2022	8,857,611	1.70%	148,471	8,857,859	1.56%	135,778
2023	8,985,636	1.45%	128,025	8,990,161	1.49%	132,302
2024	9,108,973	1.37%	123,337	9,117,745	1.42%	127,584
2025	9,232,049	1.35%	123,076	9,243,073	1.37%	125,328
5-Year Averages						
2030	9,857,661	1.32%	125,122	9,877,726	1.34%	126,931
2035	10,442,689	1.16%	117,006	10,463,467	1.16%	117,148
2040	10,921,171	0.90%	95,696	10,942,885	0.90%	95,884
2045	11,306,396	0.70%	77,045	11,310,270	0.66%	73,477

QUARTERLY FORECAST TABLES

	<u>2010-2</u>	<u>2010-3</u>	<u>2010-4</u>	<u>2011-1</u>	<u>2011-2</u>	<u>2011-3</u>	<u>2011-4</u>	<u>2012-1</u>	<u>2012-2</u>	<u>2012-3</u>	<u>2012-4</u>	<u>2013-1</u>	<u>2013-2</u>	<u>2013-3</u>	<u>2013-4</u>	<u>2014-1</u>	<u>2014-2</u>
Population																	
FDEC,November 2020	18,813.9	18,838.3	18,862.7	18,890.2	18,923.4	18,962.8	19,006.3	19,051.6	19,096.7	19,141.2	19,186.6	19,234.6	19,286.9	19,344.2	19,406.4	19,473.0	19,543.7
FDEC, March 2021	18,813.9	18,838.3	18,862.7	18,890.2	18,923.4	18,962.8	19,006.3	19,051.6	19,096.7	19,141.2	19,186.6	19,234.6	19,286.9	19,344.2	19,406.4	19,473.0	19,543.7
Population Growth Rate																	
FDEC,November 2020	0.59	0.52	0.52	0.58	0.71	0.83	0.92	0.96	0.95	0.94	0.95	1.01	1.09	1.19	1.29	1.38	1.46
FDEC, March 2021	0.59	0.52	0.52	0.58	0.71	0.83	0.92	0.96	0.95	0.94	0.95	1.01	1.09	1.19	1.29	1.38	1.46
Net Change in Population																	
FDEC,November 2020	27.9	24.4	24.4	27.5	33.2	39.4	43.5	45.3	45.1	44.5	45.4	48.0	52.3	57.3	62.1	66.6	70.7
FDEC, March 2021	27.9	24.4	24.4	27.5	33.2	39.4	43.5	45.3	45.1	44.5	45.4	48.0	52.3	57.3	62.1	66.6	70.7
Households																	
FDEC,November 2020	7,425.0	7,433.2	7,441.5	7,451.3	7,463.9	7,479.6	7,497.3	7,515.9	7,534.5	7,552.9	7,571.8	7,591.9	7,614.1	7,638.5	7,665.1	7,693.7	7,724.2
FDEC, March 2021	7,425.0	7,433.2	7,441.5	7,451.3	7,463.9	7,479.6	7,497.3	7,515.9	7,534.5	7,552.9	7,571.8	7,591.9	7,614.1	7,638.5	7,665.1	7,693.7	7,724.2
Household Growth Rate																	
FDEC,November 2020	0.50	0.44	0.45	0.53	0.68	0.84	0.95	1.00	0.99	0.98	1.00	1.07	1.17	1.29	1.40	1.50	1.59
FDEC, March 2021	0.50	0.44	0.45	0.53	0.68	0.84	0.95	1.00	0.99	0.98	1.00	1.07	1.17	1.29	1.40	1.50	1.59
Net Change in Households																	
FDEC,November 2020	9.3	8.2	8.3	9.8	12.6	15.6	17.7	18.6	18.6	18.4	18.9	20.1	22.1	24.4	26.6	28.6	30.4
FDEC, March 2021	9.3	8.2	8.3	9.8	12.6	15.6	17.7	18.6	18.6	18.4	18.9	20.1	22.1	24.4	26.6	28.6	30.4
Household Size																	
FDEC,November 2020	2.534	2.534	2.535	2.535	2.535	2.535	2.535	2.535	2.535	2.534	2.534	2.534	2.533	2.532	2.532	2.531	2.530
FDEC, March 2021	2.534	2.534	2.535	2.535	2.535	2.535	2.535	2.535	2.535	2.534	2.534	2.534	2.533	2.532	2.532	2.531	2.530
Household Size Growth Rate																	
FDEC,November 2020	0.09	0.08	0.07	0.05	0.02	-0.01	-0.03	-0.04	-0.04	-0.04	-0.05	-0.06	-0.08	-0.09	-0.11	-0.12	-0.13
FDEC, March 2021	0.09	0.08	0.07	0.05	0.02	-0.01	-0.03	-0.04	-0.04	-0.04	-0.05	-0.06	-0.08	-0.09	-0.11	-0.12	-0.13
Net Migration																	
FDEC,November 2020	17.2	14.1	14.3	17.2	23.1	29.3	33.7	35.8	35.7	35.3	36.3	39.1	43.5	48.5	53.4	57.8	62.0
FDEC, March 2021	17.2	14.1	14.3	17.2	23.1	29.3	33.7	35.8	35.7	35.3	36.3	39.1	43.5	48.5	53.4	57.8	62.0
Net International Migration																	
FDEC,November 2020	20.5	20.6	20.8	20.3	20.8	21.7	23.0	25.4	27.1	28.8	30.5	33.0	34.5	35.8	36.8	37.4	38.0
FDEC, March 2021	20.5	20.6	20.8	20.3	20.8	21.7	23.0	25.4	27.1	28.8	30.5	33.0	34.5	35.8	36.8	37.4	38.0
Births																	
FDEC,November 2020	53.7	53.5	53.3	53.4	53.3	53.3	53.2	53.2	53.2	53.3	53.4	53.5	53.7	53.9	54.1	54.5	54.8
FDEC, March 2021	53.7	53.5	53.3	53.4	53.3	53.3	53.2	53.2	53.2	53.3	53.4	53.5	53.7	53.9	54.1	54.5	54.8
Deaths																	
FDEC,November 2020	43.1	43.2	43.2	43.1	43.1	43.2	43.4	43.6	43.8	44.1	44.3	44.6	44.9	45.1	45.4	45.7	46.1
FDEC, March 2021	43.1	43.2	43.2	43.1	43.1	43.3	43.4	43.6	43.8	44.1	44.3	44.6	44.9	45.1	45.4	45.7	46.1
Net Natural Increase																	
FDEC,November 2020	10.6	10.3	10.0	10.3	10.2	10.0	9.9	9.5	9.3	9.2	9.0	8.9	8.8	8.8	8.7	8.8	8.8
FDEC, March 2021	10.6	10.3	10.0	10.3	10.2	10.0	9.9	9.5	9.3	9.2	9.0	8.9	8.8	8.8	8.7	8.8	8.8

QUARTERLY FORECAST TABLES

	<u>2014-3</u>	<u>2014-4</u>	<u>2015-1</u>	<u>2015-2</u>	<u>2015-3</u>	<u>2015-4</u>	<u>2016-1</u>	<u>2016-2</u>	<u>2016-3</u>	<u>2016-4</u>	<u>2017-1</u>	<u>2017-2</u>	<u>2017-3</u>	<u>2017-4</u>	<u>2018-1</u>	<u>2018-2</u>	<u>2018-3</u>	
Population																		
FDEC,November 2020	19,618.1	19,695.4	19,774.9	19,856.1	19,938.5	20,021.9	20,106.3	20,191.4	20,276.6	20,361.0	20,443.5	20,523.3	20,611.5	20,705.5	20,795.5	20,885.6	20,975.9	
FDEC, March 2021	19,618.1	19,695.4	19,774.9	19,856.1	19,938.5	20,021.9	20,106.3	20,191.4	20,276.6	20,361.0	20,443.5	20,523.3	20,611.4	20,705.4	20,795.5	20,885.6	20,976.0	
Population Growth Rate																		
FDEC,November 2020	1.53	1.59	1.63	1.65	1.67	1.68	1.70	1.70	1.70	1.68	1.63	1.57	1.73	1.84	1.75	1.74	1.74	
FDEC, March 2021	1.53	1.59	1.63	1.65	1.67	1.68	1.70	1.70	1.70	1.68	1.63	1.57	1.73	1.84	1.75	1.75	1.74	
Net Change in Population																		
FDEC,November 2020	74.4	77.3	79.6	81.2	82.4	83.4	84.4	85.1	85.2	84.4	82.5	79.8	88.2	94.0	90.0	90.1	90.3	
FDEC, March 2021	74.4	77.3	79.6	81.2	82.4	83.4	84.4	85.1	85.3	84.4	82.5	79.8	88.2	94.0	90.0	90.1	90.4	
Households																		
FDEC,November 2020	7,756.2	7,789.4	7,823.5	7,858.2	7,893.4	7,928.9	7,964.9	8,001.2	8,037.6	8,073.4	8,108.2	8,141.3	8,177.3	8,215.6	8,252.5	8,290.0	8,328.2	
FDEC, March 2021	7,756.2	7,789.4	7,823.5	7,858.2	7,893.4	7,928.9	7,964.9	8,001.2	8,037.6	8,073.4	8,108.2	8,141.3	8,177.3	8,215.5	8,252.5	8,290.0	8,328.3	
Household Growth Rate																		
FDEC,November 2020	1.67	1.72	1.76	1.79	1.80	1.81	1.83	1.84	1.83	1.80	1.73	1.64	1.78	1.88	1.81	1.83	1.86	
FDEC, March 2021	1.67	1.72	1.76	1.79	1.80	1.81	1.83	1.84	1.83	1.80	1.73	1.64	1.78	1.88	1.81	1.83	1.86	
Net Change in Households																		
FDEC,November 2020	32.0	33.2	34.1	34.7	35.1	35.5	35.9	36.3	36.4	35.9	34.7	33.1	36.0	38.2	36.9	37.5	38.2	
FDEC, March 2021	32.0	33.2	34.1	34.7	35.1	35.5	36.0	36.3	36.4	35.9	34.7	33.1	36.0	38.2	36.9	37.5	38.3	
Household Size																		
FDEC,November 2020	2.529	2.528	2.528	2.527	2.526	2.525	2.524	2.524	2.523	2.522	2.521	2.521	2.521	2.520	2.520	2.519	2.519	
FDEC, March 2021	2.529	2.528	2.528	2.527	2.526	2.525	2.524	2.524	2.523	2.522	2.521	2.521	2.521	2.520	2.520	2.519	2.519	
Household Size Growth Rate																		
FDEC,November 2020	-0.13	-0.14	-0.14	-0.13	-0.13	-0.13	-0.13	-0.13	-0.13	-0.12	-0.10	-0.07	-0.05	-0.05	-0.06	-0.09	-0.11	
FDEC, March 2021	-0.13	-0.14	-0.14	-0.13	-0.13	-0.13	-0.13	-0.13	-0.13	-0.12	-0.10	-0.07	-0.05	-0.05	-0.06	-0.09	-0.11	
Net Migration																		
FDEC,November 2020	65.7	68.7	71.0	72.8	74.3	75.6	76.8	77.9	78.5	78.1	76.9	74.6	83.3	89.5	85.7	86.0	86.4	
FDEC, March 2021	65.7	68.7	71.1	72.8	74.3	75.6	76.8	77.9	78.5	78.1	76.9	74.6	83.3	89.4	85.7	86.0	86.5	
Net International Migration																		
FDEC,November 2020	38.5	38.8	37.7	38.3	39.2	40.6	45.2	46.2	46.4	45.9	41.9	40.9	40.2	39.9	42.0	41.4	40.3	
FDEC, March 2021	38.5	38.8	37.7	38.3	39.2	40.6	45.2	46.2	46.4	45.9	41.9	40.9	40.2	39.9	42.0	41.4	40.3	
Births																		
FDEC,November 2020	55.1	55.4	55.8	56.0	56.2	56.3	56.3	56.3	56.3	56.2	56.1	56.0	55.8	55.7	55.5	55.4	55.3	
FDEC, March 2021	55.1	55.4	55.8	56.0	56.2	56.3	56.3	56.3	56.3	56.2	56.1	56.0	55.8	55.7	55.5	55.4	55.3	
Deaths																		
FDEC,November 2020	46.4	46.8	47.3	47.7	48.1	48.4	48.8	49.1	49.5	49.9	50.4	50.7	51.0	51.2	51.2	51.3	51.4	
FDEC, March 2021	46.4	46.8	47.3	47.7	48.1	48.4	48.8	49.1	49.5	49.9	50.4	50.7	51.0	51.2	51.2	51.3	51.4	
Net Natural Increase																		
FDEC,November 2020	8.7	8.6	8.5	8.3	8.1	7.8	7.5	7.2	6.8	6.3	5.6	5.2	4.8	4.5	4.4	4.1	3.9	
FDEC, March 2021	8.7	8.6	8.5	8.3	8.1	7.8	7.5	7.2	6.8	6.3	5.6	5.2	4.8	4.5	4.4	4.1	3.9	

QUARTERLY FORECAST TABLES

	<u>2018-4</u>	<u>2019-1</u>	<u>2019-2</u>	<u>2019-3</u>	<u>2019-4</u>	<u>2020-1</u>	<u>2020-2</u>	<u>2020-3</u>	<u>2020-4</u>	<u>2021-1</u>	<u>2021-2</u>	<u>2021-3</u>	<u>2021-4</u>	<u>2022-1</u>	<u>2022-2</u>	<u>2022-3</u>
Population																
FDEC,November 2020	21,067.3	21,161.0	21,257.7	21,356.5	21,454.8	21,549.8	21,639.0	21,719.8	21,793.1	21,861.2	21,932.2	22,011.7	22,097.0	22,182.7	22,264.2	22,343.2
FDEC, March 2021	21,067.5	21,161.1	21,257.5	21,355.9	21,454.0	21,549.4	21,639.8	21,724.9	21,806.3	21,886.0	21,965.6	22,045.6	22,125.9	22,205.8	22,285.0	22,363.3
Population Growth Rate																
FDEC,November 2020	1.76	1.79	1.84	1.87	1.85	1.78	1.67	1.50	1.36	1.26	1.31	1.46	1.56	1.56	1.48	1.43
FDEC, March 2021	1.76	1.79	1.83	1.86	1.85	1.79	1.69	1.58	1.51	1.47	1.46	1.47	1.46	1.45	1.43	1.41
Net Change in Population																
FDEC,November 2020	91.5	93.7	96.7	98.8	98.3	95.0	89.2	80.8	73.3	68.1	71.1	79.5	85.3	85.6	81.5	79.0
FDEC, March 2021	91.5	93.6	96.4	98.4	98.1	95.4	90.4	85.1	81.4	79.7	79.5	80.1	80.3	79.9	79.2	78.2
Households																
FDEC,November 2020	8,367.3	8,407.4	8,448.5	8,490.1	8,531.0	8,570.1	8,606.4	8,636.7	8,664.0	8,693.7	8,726.6	8,762.9	8,801.0	8,839.0	8,874.9	8,908.3
FDEC, March 2021	8,367.4	8,407.4	8,448.4	8,489.9	8,530.7	8,570.0	8,606.7	8,640.8	8,673.5	8,705.7	8,738.5	8,772.2	8,806.5	8,840.9	8,874.9	8,908.4
Household Growth Rate																
FDEC,November 2020	1.89	1.93	1.97	1.98	1.94	1.85	1.70	1.42	1.27	1.38	1.52	1.67	1.75	1.73	1.64	1.51
FDEC, March 2021	1.89	1.93	1.96	1.98	1.94	1.85	1.72	1.60	1.52	1.49	1.52	1.55	1.57	1.57	1.55	1.52
Net Change in Households																
FDEC,November 2020	39.1	40.1	41.1	41.6	40.9	39.1	36.2	30.4	27.3	29.7	32.9	36.3	38.1	37.9	36.0	33.4
FDEC, March 2021	39.1	40.0	41.0	41.4	40.9	39.2	36.7	34.2	32.6	32.2	32.8	33.7	34.3	34.3	34.0	33.5
Household Size																
FDEC,November 2020	2.518	2.517	2.516	2.515	2.515	2.515	2.514	2.515	2.515	2.515	2.513	2.512	2.511	2.510	2.509	2.508
FDEC, March 2021	2.518	2.517	2.516	2.515	2.515	2.515	2.514	2.514	2.514	2.514	2.514	2.513	2.512	2.512	2.511	2.510
Household Size Growth Rate																
FDEC,November 2020	-0.13	-0.14	-0.13	-0.11	-0.09	-0.06	-0.04	0.08	0.08	-0.12	-0.21	-0.21	-0.19	-0.17	-0.16	-0.09
FDEC, March 2021	-0.13	-0.14	-0.13	-0.11	-0.09	-0.06	-0.03	-0.01	-0.01	-0.02	-0.05	-0.09	-0.11	-0.11	-0.11	-0.10
Net Migration																
FDEC,November 2020	87.8	90.2	93.4	95.6	95.3	97.4	92.6	84.5	76.5	68.1	70.1	77.5	83.5	84.0	80.1	77.7
FDEC, March 2021	87.8	90.1	93.0	95.2	95.1	101.3	98.1	93.5	89.4	83.0	81.8	81.6	81.4	81.6	80.8	79.9
Net International Migration																
FDEC,November 2020	38.6	33.6	31.9	30.7	30.1	21.1	13.2	15.0	19.9	19.9	19.9	20.0	20.1	20.2	20.5	20.8
FDEC, March 2021	38.6	33.6	31.9	30.7	30.1	21.1	14.7	16.3	17.8	18.7	19.9	20.2	20.3	20.5	20.8	21.1
Births																
FDEC,November 2020	55.2	55.1	55.0	55.0	55.0	55.0	55.0	55.1	55.2	55.5	55.6	55.8	56.0	56.1	56.3	56.5
FDEC, March 2021	55.2	55.1	55.0	55.0	55.0	52.9	52.4	52.1	52.0	52.3	52.4	52.5	52.7	53.2	53.4	53.6
Deaths																
FDEC,November 2020	51.5	51.6	51.7	51.8	52.0	57.4	58.4	58.8	58.5	55.5	54.7	53.8	54.1	54.5	54.8	55.2
FDEC, March 2021	51.5	51.6	51.7	51.8	52.0	58.9	60.1	60.5	60.0	55.6	54.6	54.0	53.8	54.8	55.0	55.3
Net Natural Increase																
FDEC,November 2020	3.7	3.5	3.3	3.2	3.0	-2.5	-3.4	-3.6	-3.2	0.0	1.0	2.0	1.8	1.6	1.4	1.3
FDEC, March 2021	3.7	3.5	3.3	3.2	3.0	-6.0	-7.7	-8.4	-8.0	-3.3	-2.2	-1.5	-1.1	-1.6	-1.6	-1.6

QUARTERLY FORECAST TABLES

	<u>2022-4</u>	<u>2023-1</u>	<u>2023-2</u>	<u>2023-3</u>	<u>2023-4</u>	<u>2024-1</u>	<u>2024-2</u>	<u>2024-3</u>	<u>2024-4</u>	<u>2025-1</u>	<u>2025-2</u>	<u>2025-3</u>	<u>2025-4</u>	<u>2026-1</u>	<u>2026-2</u>	<u>2026-3</u>
Population																
FDEC,November 2020	22,420.3	22,495.5	22,569.9	22,644.1	22,718.1	22,791.6	22,864.3	22,936.1	23,007.1	23,077.4	23,147.0	23,216.0	23,284.3	23,352.0	23,418.9	23,485.1
FDEC, March 2021	22,440.6	22,517.1	22,592.9	22,667.9	22,742.1	22,815.7	22,888.6	22,960.8	23,032.4	23,103.4	23,173.7	23,243.8	23,313.3	23,382.2	23,450.4	23,517.9
Population Growth Rate																
FDEC,November 2020	1.39	1.35	1.33	1.32	1.31	1.30	1.28	1.26	1.24	1.23	1.21	1.20	1.18	1.17	1.15	1.14
FDEC, March 2021	1.39	1.37	1.35	1.33	1.32	1.30	1.28	1.27	1.25	1.24	1.22	1.21	1.20	1.19	1.17	1.16
Net Change in Population																
FDEC,November 2020	77.1	75.2	74.3	74.3	74.0	73.4	72.7	71.8	71.0	70.3	69.6	69.0	68.3	67.6	66.9	66.2
FDEC, March 2021	77.3	76.5	75.7	75.0	74.3	73.6	72.9	72.2	71.6	71.0	70.3	70.0	69.5	68.9	68.2	67.5
Households																
FDEC,November 2020	8,939.9	8,970.5	9,000.9	9,031.6	9,062.5	9,093.5	9,124.4	9,155.3	9,186.0	9,216.7	9,247.6	9,278.7	9,309.9	9,341.2	9,372.6	9,403.9
FDEC, March 2021	8,941.4	8,974.0	9,006.3	9,038.4	9,070.2	9,101.9	9,133.5	9,165.1	9,196.4	9,227.6	9,258.5	9,290.5	9,322.3	9,354.2	9,386.2	9,418.2
Household Growth Rate																
FDEC,November 2020	1.42	1.38	1.36	1.37	1.38	1.37	1.37	1.36	1.35	1.34	1.34	1.35	1.35	1.35	1.35	1.35
FDEC, March 2021	1.49	1.47	1.45	1.43	1.42	1.41	1.40	1.39	1.38	1.36	1.35	1.39	1.38	1.38	1.37	1.37
Net Change in Households																
FDEC,November 2020	31.6	30.6	30.4	30.7	30.9	31.0	30.9	30.9	30.8	30.7	30.8	31.1	31.2	31.3	31.4	31.4
FDEC, March 2021	33.0	32.6	32.3	32.1	31.9	31.7	31.6	31.5	31.4	31.2	30.9	32.0	31.8	31.9	32.0	32.0
Household Size																
FDEC,November 2020	2.508	2.508	2.508	2.507	2.507	2.506	2.506	2.505	2.505	2.504	2.503	2.502	2.501	2.500	2.499	2.497
FDEC, March 2021	2.510	2.509	2.509	2.508	2.507	2.507	2.506	2.505	2.504	2.504	2.503	2.502	2.501	2.500	2.498	2.497
Household Size Growth Rate																
FDEC,November 2020	-0.04	-0.03	-0.04	-0.05	-0.06	-0.07	-0.09	-0.10	-0.10	-0.11	-0.13	-0.15	-0.17	-0.18	-0.20	-0.21
FDEC, March 2021	-0.10	-0.10	-0.09	-0.10	-0.10	-0.10	-0.11	-0.12	-0.12	-0.12	-0.12	-0.17	-0.17	-0.19	-0.20	-0.21
Net Migration																
FDEC,November 2020	75.9	74.2	73.4	73.4	73.3	72.8	72.2	71.6	70.9	70.4	70.0	69.6	69.3	69.1	68.8	68.5
FDEC, March 2021	79.0	78.5	77.8	77.2	76.7	76.2	75.7	75.2	74.7	74.1	73.6	73.3	72.9	72.5	72.1	71.6
Net International Migration																
FDEC,November 2020	21.2	21.6	22.2	22.9	23.2	23.5	23.2	22.9	22.6	22.3	22.1	21.9	21.7	21.5	21.3	21.1
FDEC, March 2021	21.6	22.1	22.8	23.5	23.9	24.2	24.0	23.7	23.5	23.3	23.1	22.9	22.8	22.6	22.5	22.3
Births																
FDEC,November 2020	56.7	57.1	57.3	57.6	57.9	58.2	58.4	58.7	58.9	59.2	59.4	59.6	59.7	59.8	59.8	59.9
FDEC, March 2021	53.8	53.9	54.1	54.2	54.4	54.5	54.7	54.8	55.0	55.1	55.3	55.6	56.0	56.3	56.5	56.8
Deaths																
FDEC,November 2020	55.6	56.0	56.4	56.8	57.2	57.5	57.9	58.4	58.8	59.3	59.7	60.2	60.7	61.2	61.7	62.2
FDEC, March 2021	55.5	55.9	56.2	56.5	56.8	57.2	57.5	57.8	58.1	58.3	58.6	58.9	59.4	59.9	60.3	60.8
Net Natural Increase																
FDEC,November 2020	1.2	1.1	0.9	0.8	0.7	0.6	0.5	0.3	0.1	-0.1	-0.3	-0.6	-1.0	-1.5	-1.9	-2.3
FDEC, March 2021	-1.7	-1.9	-2.1	-2.3	-2.4	-2.7	-2.8	-3.0	-3.1	-3.1	-3.2	-3.2	-3.4	-3.6	-3.8	-4.0

QUARTERLY FORECAST TABLES

	<u>2026-4</u>	<u>2027-1</u>	<u>2027-2</u>	<u>2027-3</u>	<u>2027-4</u>	<u>2028-1</u>	<u>2028-2</u>	<u>2028-3</u>	<u>2028-4</u>	<u>2029-1</u>	<u>2029-2</u>	<u>2029-3</u>	<u>2029-4</u>	<u>2030-1</u>	<u>2030-2</u>
Population															
FDEC,November 2020	23,550.7	23,615.5	23,679.7	23,743.1	23,805.9	23,868.0	23,929.5	23,990.3	24,050.5	24,110.1	24,169.1	24,227.5	24,285.5	24,342.9	24,399.9
FDEC, March 2021	23,584.7	23,650.7	23,715.9	23,780.3	23,844.1	23,907.2	23,969.7	24,031.7	24,093.0	24,153.8	24,213.9	24,273.3	24,332.1	24,390.2	24,447.7
Population Growth Rate															
FDEC,November 2020	1.12	1.11	1.09	1.08	1.06	1.05	1.03	1.02	1.01	0.99	0.98	0.97	0.96	0.95	0.94
FDEC, March 2021	1.14	1.12	1.11	1.09	1.08	1.06	1.05	1.04	1.03	1.01	1.00	0.99	0.97	0.96	0.95
Net Change in Population															
FDEC,November 2020	65.5	64.8	64.1	63.5	62.8	62.1	61.5	60.8	60.2	59.6	59.0	58.5	57.9	57.5	57.0
FDEC, March 2021	66.8	66.0	65.2	64.4	63.7	63.1	62.5	62.0	61.4	60.8	60.1	59.4	58.8	58.1	57.5
Households															
FDEC,November 2020	9,435.3	9,466.7	9,498.1	9,529.5	9,560.9	9,592.3	9,623.7	9,655.1	9,686.4	9,717.7	9,749.0	9,780.1	9,811.2	9,842.2	9,873.1
FDEC, March 2021	9,450.2	9,482.3	9,514.2	9,546.1	9,577.9	9,609.7	9,641.4	9,673.1	9,704.8	9,736.4	9,767.9	9,799.4	9,830.8	9,862.1	9,893.3
Household Growth Rate															
FDEC,November 2020	1.34	1.34	1.33	1.33	1.32	1.32	1.32	1.31	1.31	1.30	1.29	1.28	1.28	1.27	1.26
FDEC, March 2021	1.37	1.36	1.35	1.35	1.34	1.33	1.33	1.32	1.32	1.31	1.30	1.30	1.29	1.28	1.27
Net Change in Households															
FDEC,November 2020	31.4	31.4	31.4	31.4	31.4	31.4	31.4	31.4	31.4	31.3	31.2	31.1	31.1	31.0	30.9
FDEC, March 2021	32.0	32.0	32.0	31.9	31.8	31.8	31.7	31.7	31.7	31.6	31.6	31.5	31.4	31.3	31.2
Household Size															
FDEC,November 2020	2.496	2.495	2.493	2.492	2.490	2.488	2.487	2.485	2.483	2.481	2.479	2.477	2.475	2.473	2.471
FDEC, March 2021	2.496	2.494	2.493	2.491	2.489	2.488	2.486	2.484	2.483	2.481	2.479	2.477	2.475	2.473	2.471
Household Size Growth Rate															
FDEC,November 2020	-0.22	-0.23	-0.24	-0.25	-0.26	-0.27	-0.28	-0.29	-0.29	-0.30	-0.30	-0.31	-0.31	-0.32	-0.32
FDEC, March 2021	-0.22	-0.23	-0.24	-0.25	-0.26	-0.27	-0.27	-0.28	-0.29	-0.29	-0.30	-0.31	-0.31	-0.32	-0.32
Net Migration															
FDEC,November 2020	68.2	68.0	67.7	67.4	67.1	66.9	66.7	66.4	66.2	66.0	65.8	65.6	65.5	65.4	65.3
FDEC, March 2021	71.0	70.5	70.0	69.5	69.1	68.8	68.5	68.2	67.9	67.6	67.3	67.0	66.6	66.3	66.1
Net International Migration															
FDEC,November 2020	20.9	20.7	20.5	20.4	20.2	20.1	19.9	19.8	19.7	19.6	19.4	19.3	19.2	19.1	19.1
FDEC, March 2021	22.2	22.0	21.9	21.8	21.7	21.6	21.5	21.4	21.3	21.2	21.2	21.1	21.1	21.0	21.0
Births															
FDEC,November 2020	60.0	60.0	60.1	60.2	60.2	60.3	60.3	60.4	60.4	60.5	60.5	60.6	60.6	60.7	60.7
FDEC, March 2021	57.0	57.3	57.5	57.8	58.0	58.2	58.5	58.7	58.9	59.1	59.3	59.5	59.6	59.8	59.9
Deaths															
FDEC,November 2020	62.7	63.2	63.6	64.1	64.6	65.1	65.5	66.0	66.4	66.9	67.3	67.7	68.2	68.6	69.0
FDEC, March 2021	61.3	61.8	62.3	62.9	63.4	63.9	64.4	64.9	65.5	66.0	66.5	67.0	67.5	68.0	68.5
Net Natural Increase															
FDEC,November 2020	-2.7	-3.1	-3.5	-4.0	-4.4	-4.8	-5.2	-5.6	-6.0	-6.4	-6.8	-7.2	-7.6	-7.9	-8.3
FDEC, March 2021	-4.3	-4.5	-4.8	-5.1	-5.4	-5.7	-5.9	-6.3	-6.6	-6.9	-7.2	-7.5	-7.9	-8.2	-8.6

FISCAL YEAR
FORECAST TABLES

	<u>2000-01</u>	<u>2001-02</u>	<u>2002-03</u>	<u>2003-04</u>	<u>2004-05</u>	<u>2005-06</u>	<u>2006-07</u>	<u>2007-08</u>	<u>2008-09</u>	<u>2009-10</u>	<u>2010-11</u>	<u>2011-12</u>	<u>2012-13</u>	<u>2013-14</u>	<u>2014-15</u>
Population															
FDEC, November 2020	16,228.0	16,551.2	16,892.0	17,273.8	17,677.3	18,062.2	18,378.2	18,578.9	18,671.4	18,770.4	18,878.6	19,029.3	19,212.3	19,441.8	19,736.1
FDEC, March 2021	16,228.0	16,551.2	16,892.0	17,273.8	17,677.3	18,062.2	18,378.2	18,578.9	18,671.4	18,770.4	18,878.6	19,029.3	19,212.3	19,441.8	19,736.1
Growth Rate															
FDEC, November 2020	2.18	1.99	2.06	2.26	2.34	2.18	1.75	1.09	0.50	0.53	0.58	0.80	0.96	1.19	1.51
FDEC, March 2021	2.18	1.99	2.06	2.26	2.34	2.18	1.75	1.09	0.50	0.53	0.58	0.80	0.96	1.19	1.51
Net Change in Population															
FDEC, November 2020	346.4	323.2	340.9	381.8	403.5	384.9	316.0	200.7	92.5	99.0	108.2	150.7	183.0	229.5	294.3
FDEC, March 2021	346.4	323.2	340.9	381.8	403.5	384.9	316.0	200.7	92.5	99.0	108.2	150.7	183.0	229.5	294.3
Households															
FDEC, November 2020	6,431.8	6,554.7	6,685.7	6,833.2	6,990.5	7,142.1	7,266.1	7,341.9	7,374.2	7,410.1	7,447.5	7,506.8	7,582.7	7,680.4	7,806.8
FDEC, March 2021	6,431.8	6,554.7	6,685.7	6,833.2	6,990.5	7,142.1	7,266.1	7,341.9	7,374.2	7,410.1	7,447.5	7,506.8	7,582.7	7,680.4	7,806.8
Growth Rate															
FDEC, November 2020	2.14	1.91	2.00	2.21	2.30	2.17	1.74	1.04	0.44	0.49	0.50	0.80	1.01	1.29	1.65
FDEC, March 2021	2.14	1.91	2.00	2.21	2.30	2.17	1.74	1.04	0.44	0.49	0.50	0.80	1.01	1.29	1.65
Net Change in Households															
FDEC, November 2020	134.6	122.9	131.0	147.5	157.3	151.7	124.0	75.7	32.3	35.9	37.4	59.3	75.9	97.7	126.5
FDEC, March 2021	134.6	122.9	131.0	147.5	157.3	151.7	124.0	75.7	32.3	35.9	37.4	59.3	75.9	97.7	126.5
Household Size															
FDEC, November 2020	2.523	2.525	2.527	2.528	2.529	2.529	2.529	2.531	2.532	2.533	2.535	2.535	2.534	2.531	2.528
FDEC, March 2021	2.523	2.525	2.527	2.528	2.529	2.529	2.529	2.531	2.532	2.533	2.535	2.535	2.534	2.531	2.528
Growth Rate															
FDEC, November 2020	0.04	0.08	0.06	0.05	0.03	0.01	0.01	0.05	0.06	0.04	0.07	0.00	-0.05	-0.09	-0.13
FDEC, March 2021	0.04	0.08	0.06	0.05	0.03	0.01	0.01	0.05	0.06	0.04	0.07	0.00	-0.05	-0.09	-0.13
Net Migration															
FDEC, November 2020	306.0	285.5	300.4	335.0	351.1	322.9	245.0	133.7	36.3	52.7	67.4	112.0	147.0	194.4	260.2
FDEC, March 2021	306.0	285.5	300.4	335.0	351.1	322.9	245.0	133.7	36.3	52.7	67.4	112.0	147.0	194.4	260.2
Net International Migration															
FDEC, November 2020	99.3	97.0	90.3	88.9	92.4	95.0	92.0	78.6	76.0	82.7	82.4	97.2	126.7	148.0	153.3
FDEC, March 2021	99.3	97.0	90.3	88.9	92.4	95.0	92.0	78.6	76.0	82.7	82.4	97.2	126.7	148.0	153.3
Births															
FDEC, November 2020	205.4	205.4	208.5	215.0	221.8	232.1	239.3	236.0	226.4	217.4	213.5	212.9	213.8	217.4	222.3
FDEC, March 2021	205.4	205.4	208.5	215.0	221.8	232.1	239.3	236.0	226.4	217.4	213.5	212.9	213.8	217.4	222.3
Deaths															
FDEC, November 2020	165.0	167.7	168.1	168.3	169.4	170.1	168.3	169.0	170.2	171.1	172.7	174.1	177.8	182.4	188.2
FDEC, March 2021	165.0	167.7	168.1	168.3	169.4	170.1	168.3	169.0	170.2	171.1	172.7	174.1	177.8	182.4	188.2
Net Natural Increase															
FDEC, November 2020	40.3	37.7	40.4	46.7	52.4	62.0	71.0	67.0	56.2	46.3	40.8	38.8	36.0	35.0	34.1
FDEC, March 2021	40.3	37.7	40.4	46.7	52.4	62.0	71.0	67.0	56.2	46.3	40.8	38.8	36.0	35.0	34.1

FISCAL YEAR
FORECAST TABLES

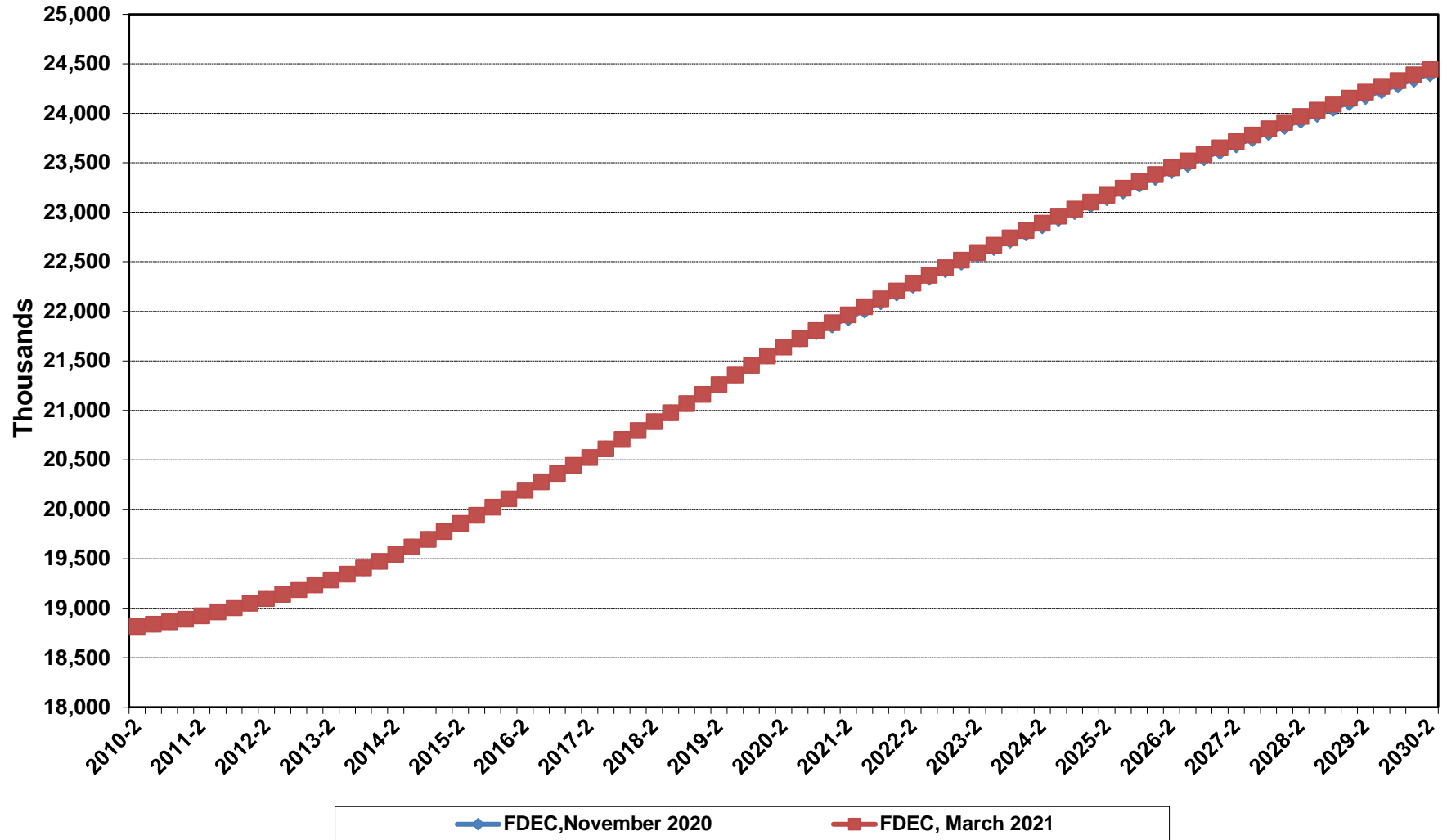
	<u>2015-16</u>	<u>2016-17</u>	<u>2017-18</u>	<u>2018-19</u>	<u>2019-20</u>	<u>2020-21</u>	<u>2021-22</u>	<u>2022-23</u>	<u>2023-24</u>	<u>2024-25</u>	<u>2025-26</u>	<u>2026-27</u>	<u>2027-28</u>	<u>2028-29</u>	<u>2029-30</u>
Population															
FDEC, November 2020	20,064.5	20,401.1	20,749.5	21,115.5	21,500.0	21,826.6	22,138.9	22,457.2	22,754.5	23,041.9	23,317.8	23,582.7	23,836.6	24,080.0	24,314.0
FDEC, March 2021	20,064.5	20,401.1	20,749.5	21,115.6	21,499.8	21,845.7	22,165.6	22,478.5	22,778.6	23,067.6	23,347.4	23,617.3	23,875.3	24,123.1	24,360.8
Growth Rate															
FDEC, November 2020	1.66	1.68	1.71	1.76	1.82	1.52	1.43	1.44	1.32	1.26	1.20	1.14	1.08	1.02	0.97
FDEC, March 2021	1.66	1.68	1.71	1.76	1.82	1.61	1.46	1.41	1.33	1.27	1.21	1.16	1.09	1.04	0.99
Net Change in Population															
FDEC, November 2020	328.4	336.6	348.4	366.0	384.5	326.5	312.3	318.3	297.3	287.4	275.9	264.9	253.9	243.3	234.0
FDEC, March 2021	328.4	336.6	348.4	366.1	384.2	345.9	319.9	312.9	300.1	289.0	279.8	269.9	258.0	247.8	237.7
Households															
FDEC, November 2020	7,947.1	8,090.1	8,233.8	8,387.8	8,549.4	8,680.3	8,819.4	8,954.9	9,078.0	9,201.4	9,325.6	9,451.0	9,576.6	9,702.1	9,826.6
FDEC, March 2021	7,947.1	8,090.1	8,233.8	8,387.9	8,549.3	8,689.6	8,823.6	8,957.5	9,086.0	9,211.9	9,338.3	9,466.2	9,593.8	9,720.6	9,846.4
Growth Rate															
FDEC, November 2020	1.80	1.80	1.78	1.87	1.93	1.53	1.60	1.54	1.37	1.36	1.35	1.35	1.33	1.31	1.28
FDEC, March 2021	1.80	1.80	1.78	1.87	1.92	1.64	1.54	1.52	1.43	1.39	1.37	1.37	1.35	1.32	1.29
Net Change in Households															
FDEC, November 2020	140.2	143.0	143.7	154.0	161.5	130.9	139.2	135.5	123.1	123.4	124.2	125.5	125.6	125.4	124.6
FDEC, March 2021	140.2	143.0	143.7	154.0	161.4	140.3	134.0	133.9	128.5	125.9	126.4	128.0	127.5	126.8	125.8
Household Size															
FDEC, November 2020	2.525	2.522	2.520	2.517	2.515	2.515	2.510	2.508	2.507	2.504	2.500	2.495	2.489	2.482	2.474
FDEC, March 2021	2.525	2.522	2.520	2.517	2.515	2.514	2.512	2.509	2.507	2.504	2.500	2.495	2.489	2.482	2.474
Growth Rate															
FDEC, November 2020	-0.13	-0.12	-0.07	-0.10	-0.10	-0.01	-0.17	-0.10	-0.05	-0.09	-0.15	-0.21	-0.25	-0.29	-0.31
FDEC, March 2021	-0.13	-0.12	-0.07	-0.10	-0.10	-0.03	-0.08	-0.10	-0.10	-0.12	-0.16	-0.21	-0.25	-0.28	-0.31
Net Migration															
FDEC, November 2020	297.8	312.7	330.6	351.6	384.2	332.5	305.5	313.9	294.7	287.4	280.8	276.5	272.2	268.1	264.9
FDEC, March 2021	297.7	312.7	330.5	351.6	391.7	367.8	325.7	320.2	310.3	301.5	293.9	287.5	280.1	274.7	269.9
Net International Migration															
FDEC, November 2020	171.2	175.0	163.5	144.3	95.1	74.7	80.7	85.8	92.7	89.9	86.3	83.2	80.6	78.5	76.8
FDEC, March 2021	171.2	175.0	163.5	144.3	96.6	72.7	81.7	87.6	95.7	93.7	90.8	88.4	86.5	85.1	84.1
Births															
FDEC, November 2020	225.0	224.5	222.5	220.6	219.9	221.5	224.1	227.6	232.0	236.2	238.9	240.1	241.0	241.8	242.5
FDEC, March 2021	225.0	224.5	222.5	220.6	215.3	208.7	211.9	215.4	217.8	220.2	224.4	228.6	232.4	236.0	238.9
Deaths															
FDEC, November 2020	194.4	200.5	204.7	206.2	219.6	227.4	217.3	223.1	229.4	236.2	243.8	251.6	259.3	266.5	273.4
FDEC, March 2021	194.4	200.5	204.7	206.2	222.8	230.6	217.7	222.8	227.9	232.7	238.4	246.3	254.5	262.9	271.1
Net Natural Increase															
FDEC, November 2020	30.6	24.0	17.8	14.4	0.3	-5.9	6.8	4.4	2.6	0.0	-4.9	-11.6	-18.3	-24.8	-30.9
FDEC, March 2021	30.6	24.0	17.8	14.4	-7.5	-21.9	-5.8	-7.4	-10.2	-12.5	-14.1	-17.7	-22.1	-26.9	-32.2

Florida Demographic Estimating Conference

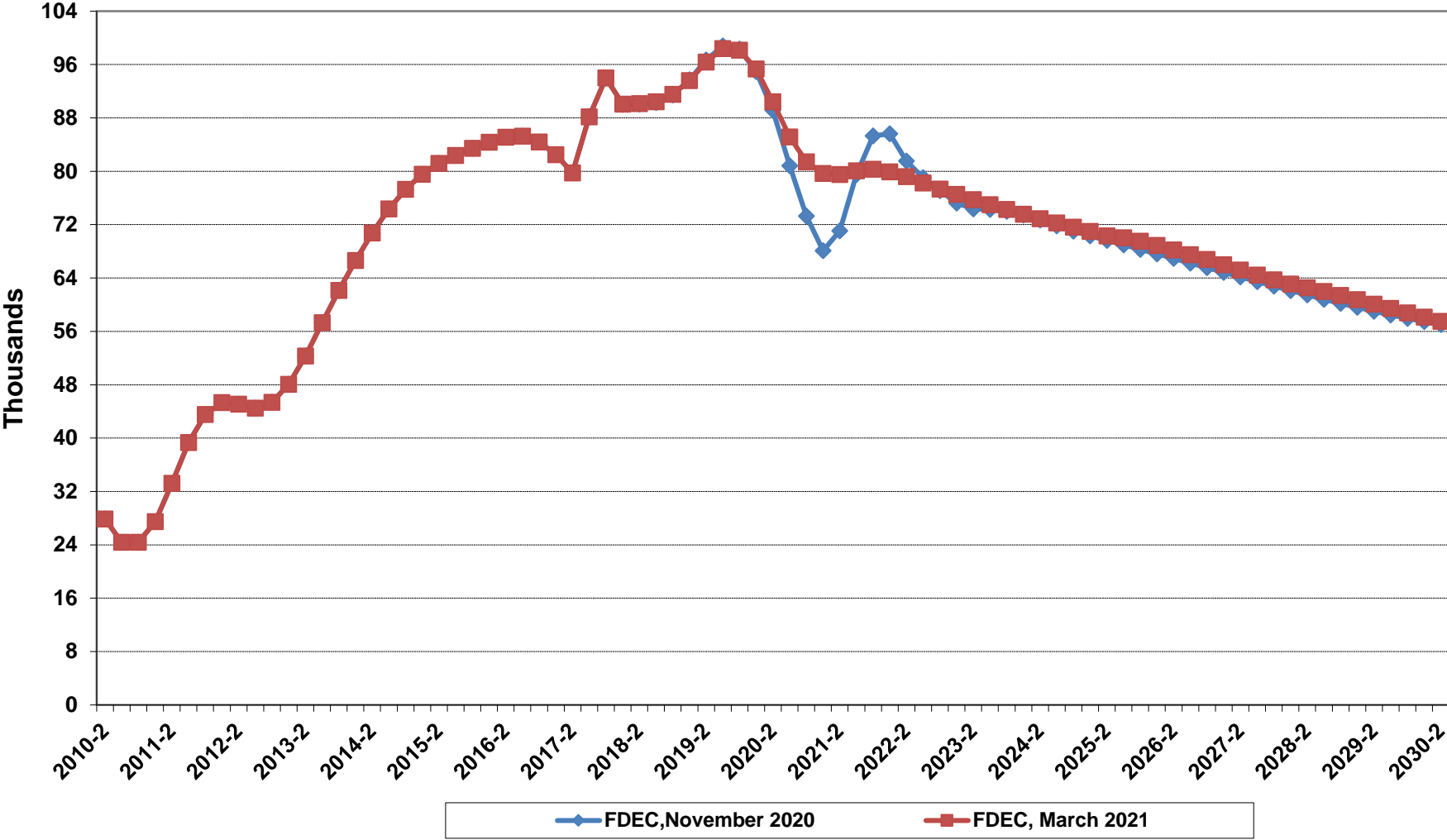
Charts
Conference Packet

March 3, 2021

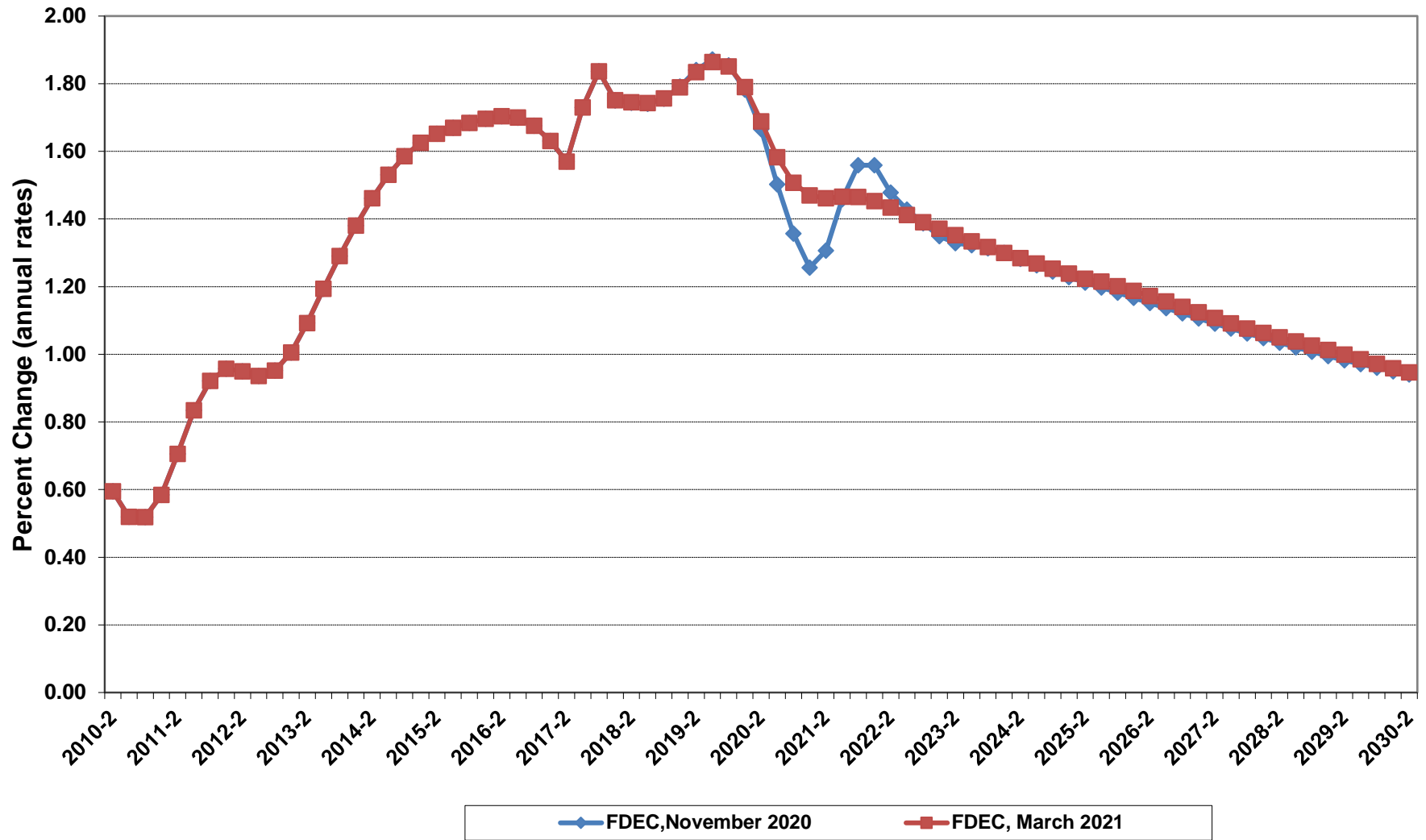
Florida Resident Population



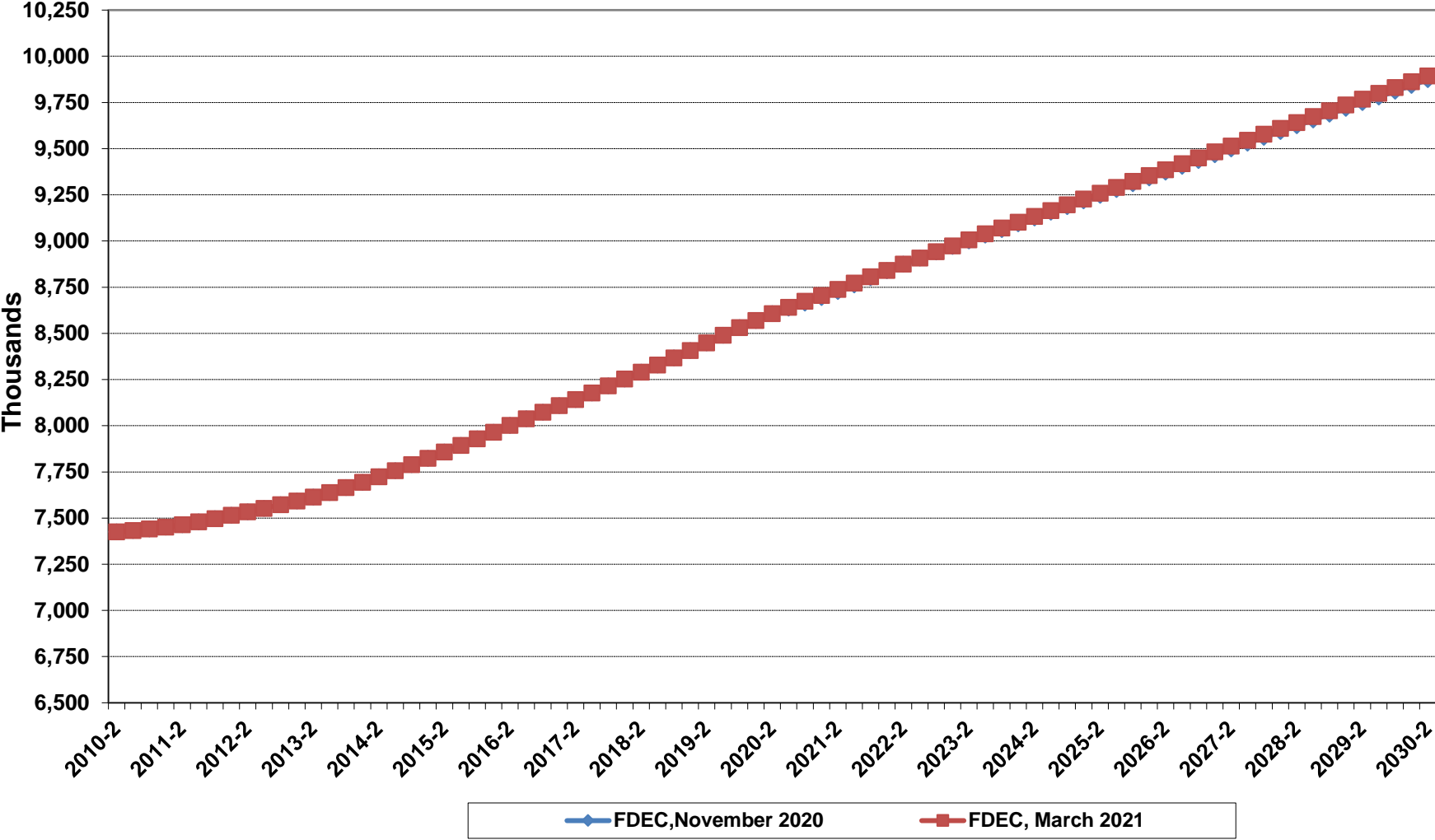
Net Change In Florida Resident Population



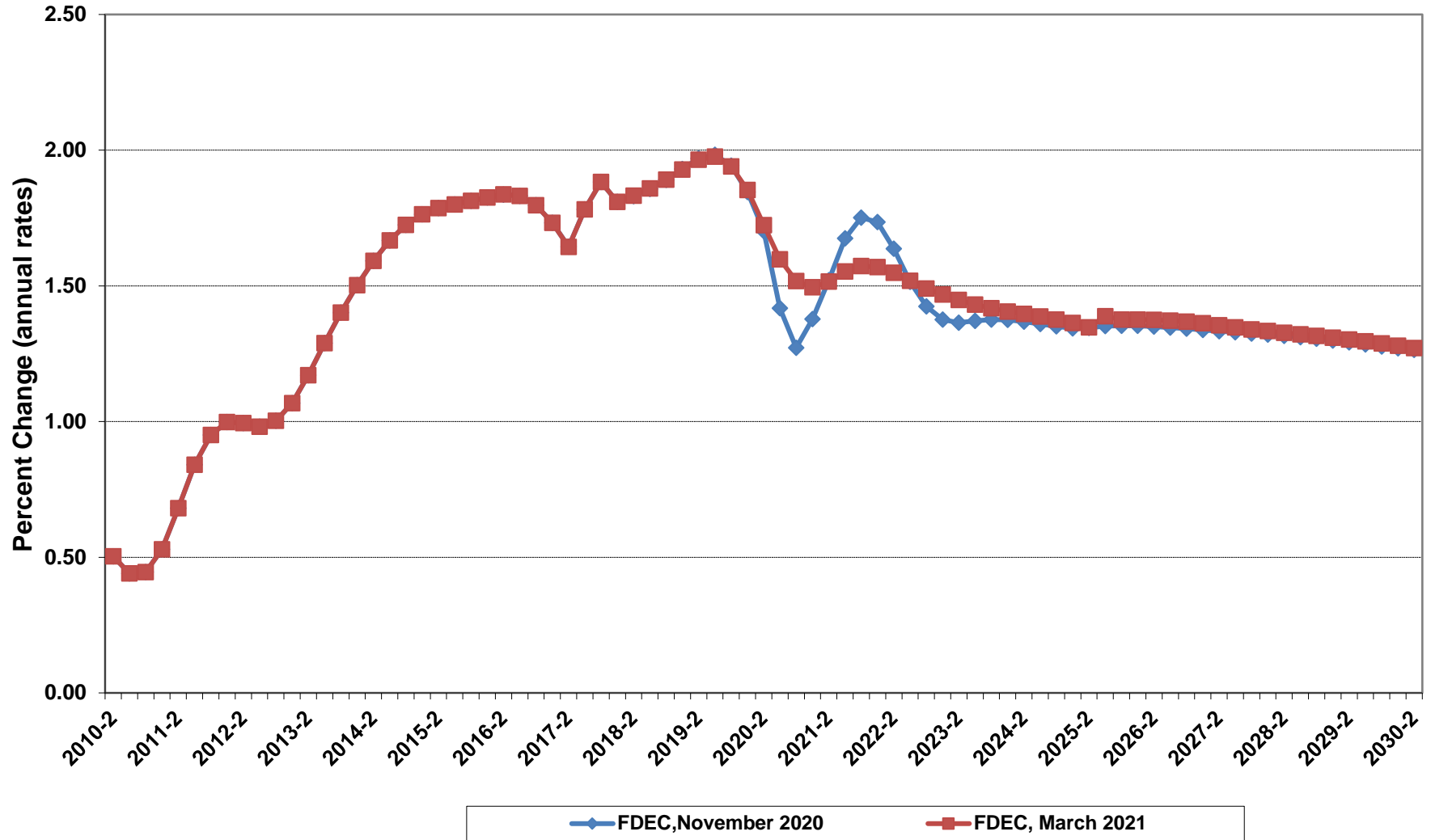
Growth In Florida Resident Population



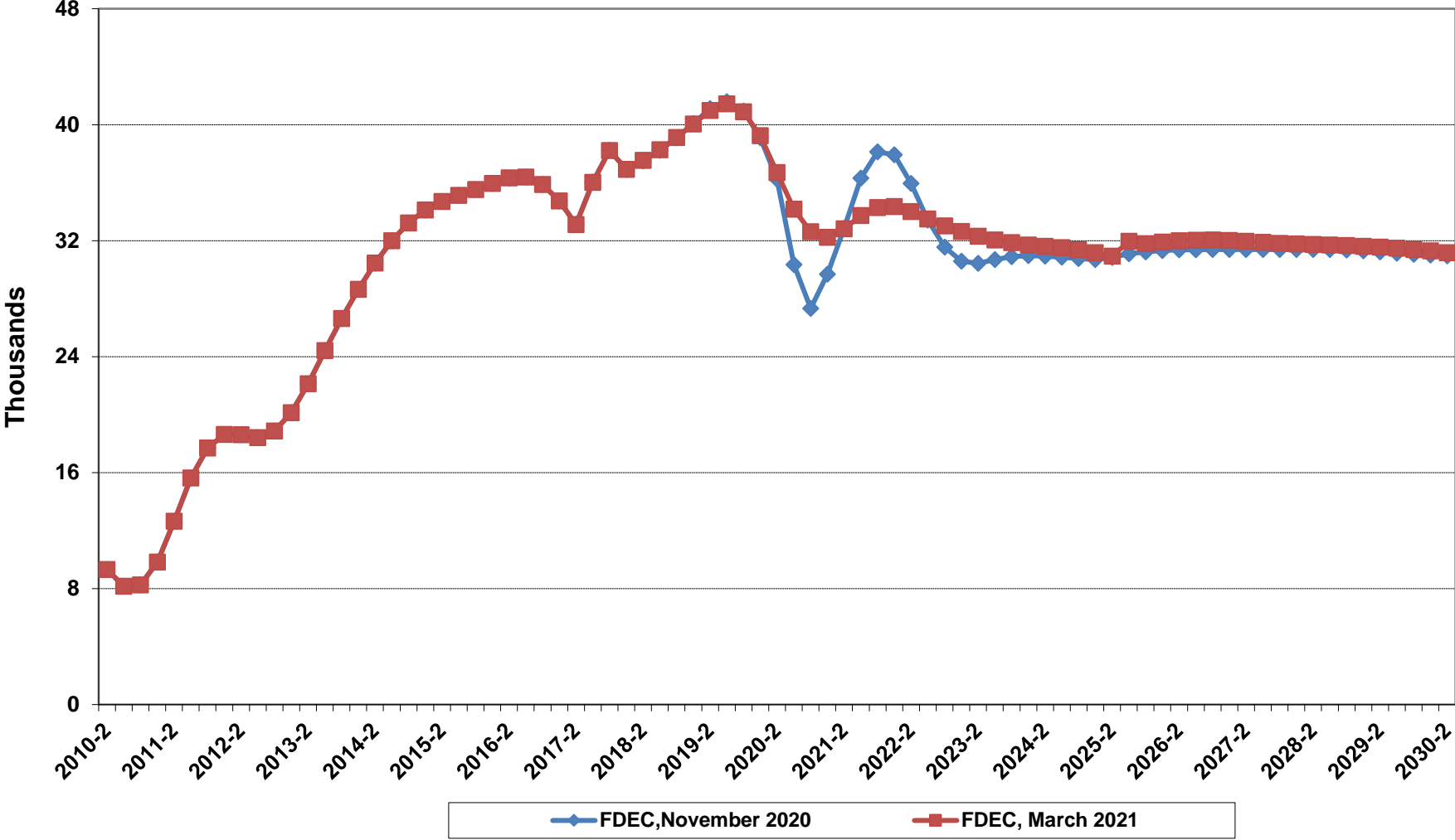
Florida Resident Households



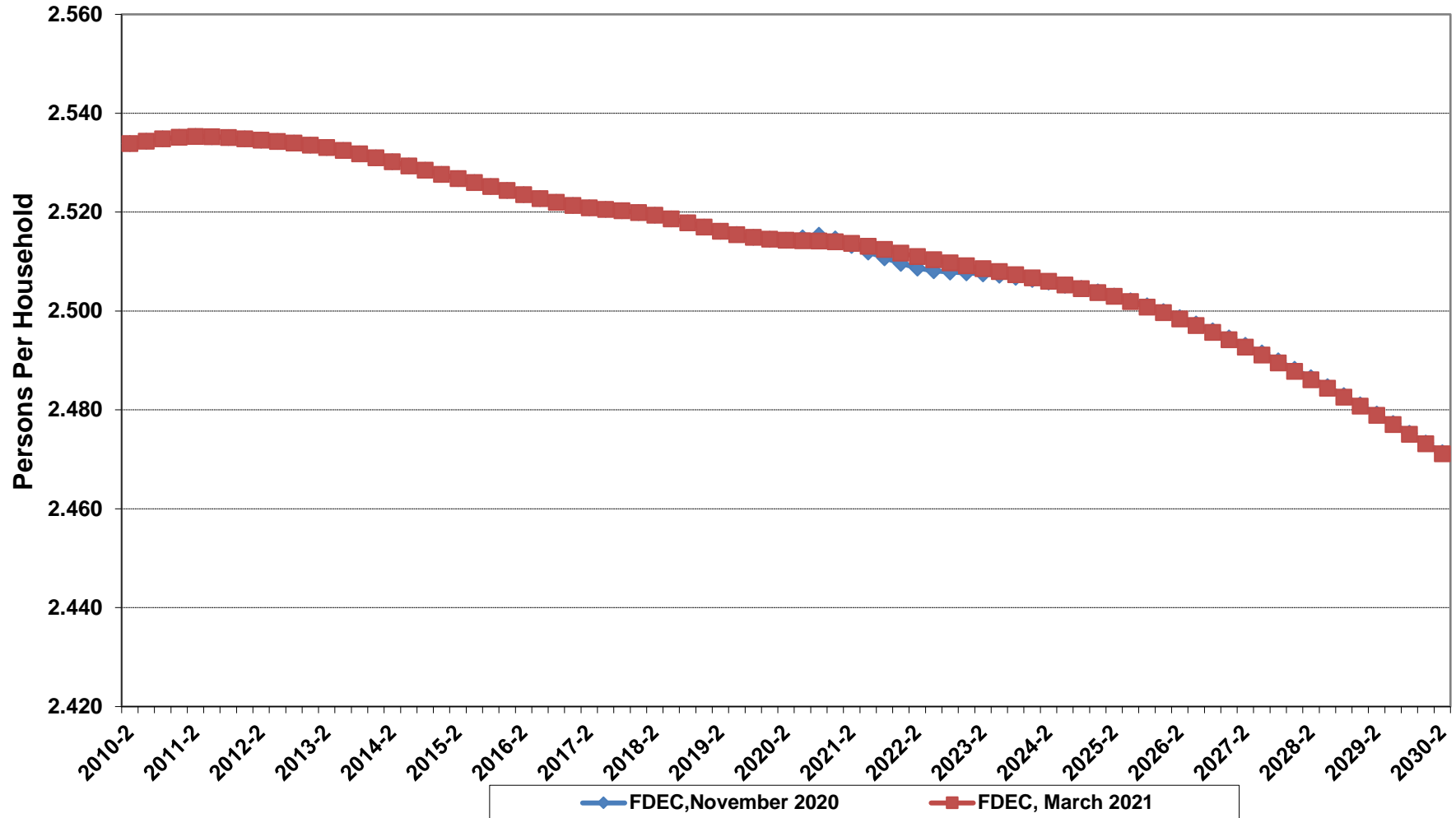
Growth In Florida Resident Households



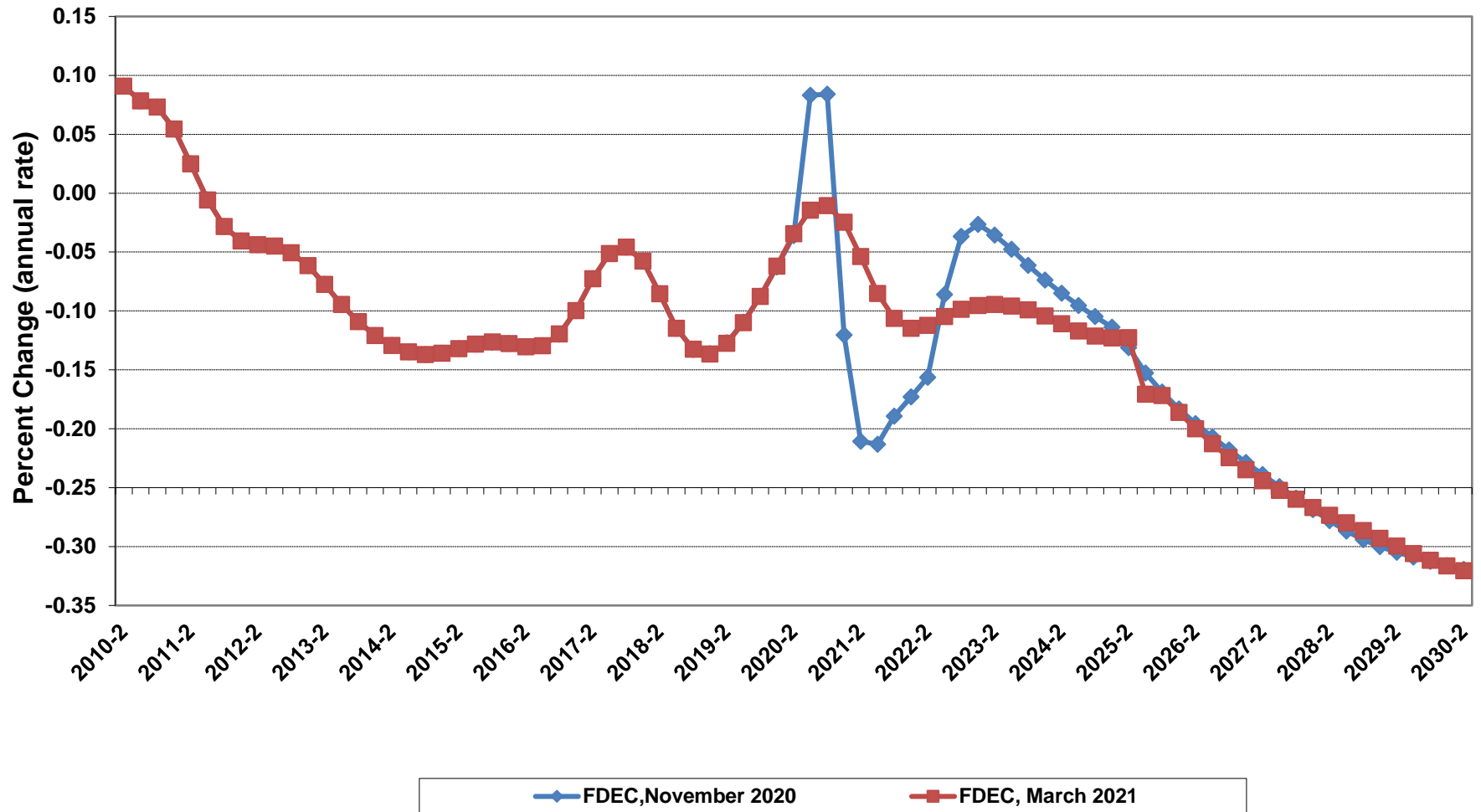
Net Change In Florida Resident Households



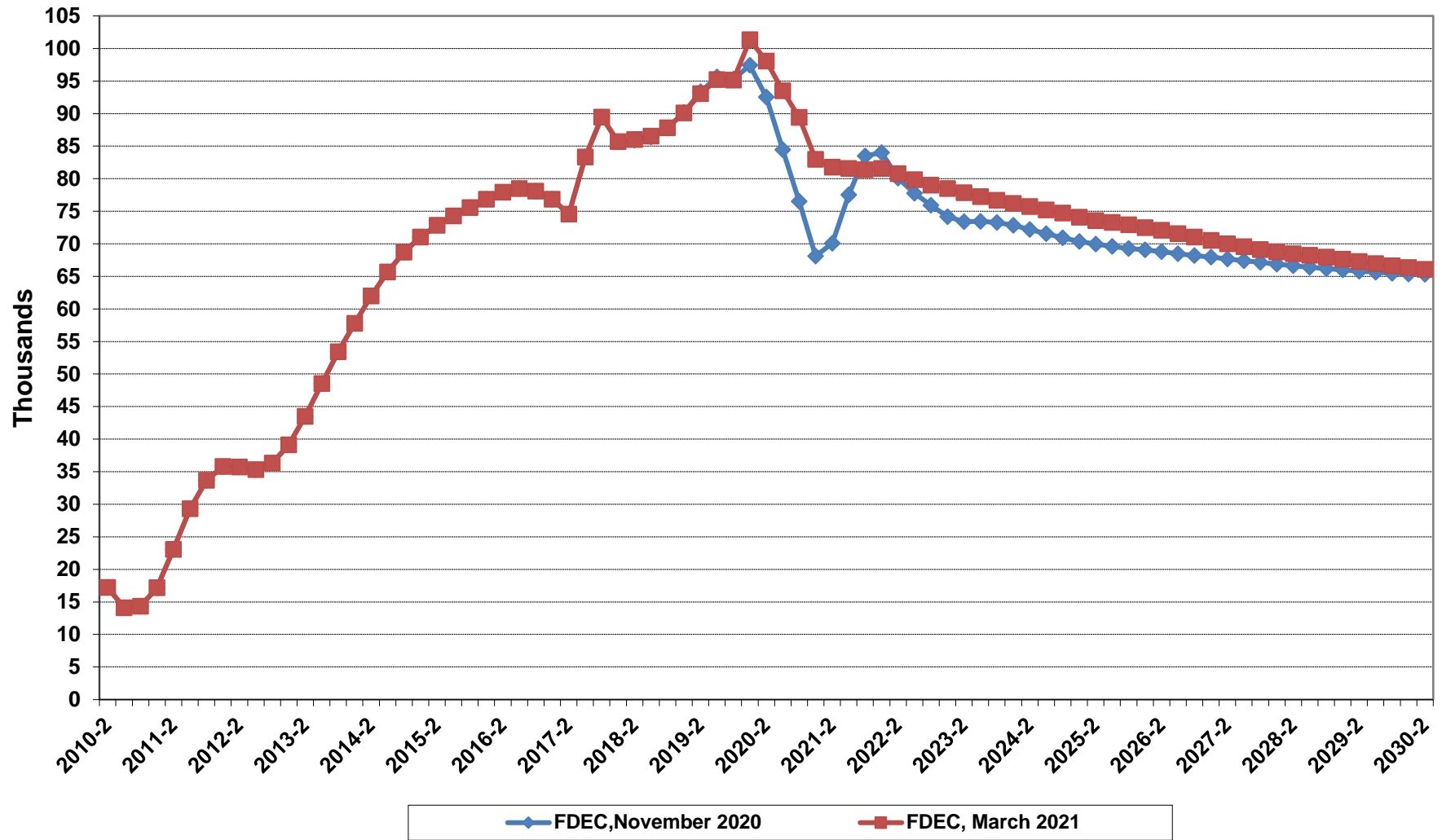
Florida Average Household Size



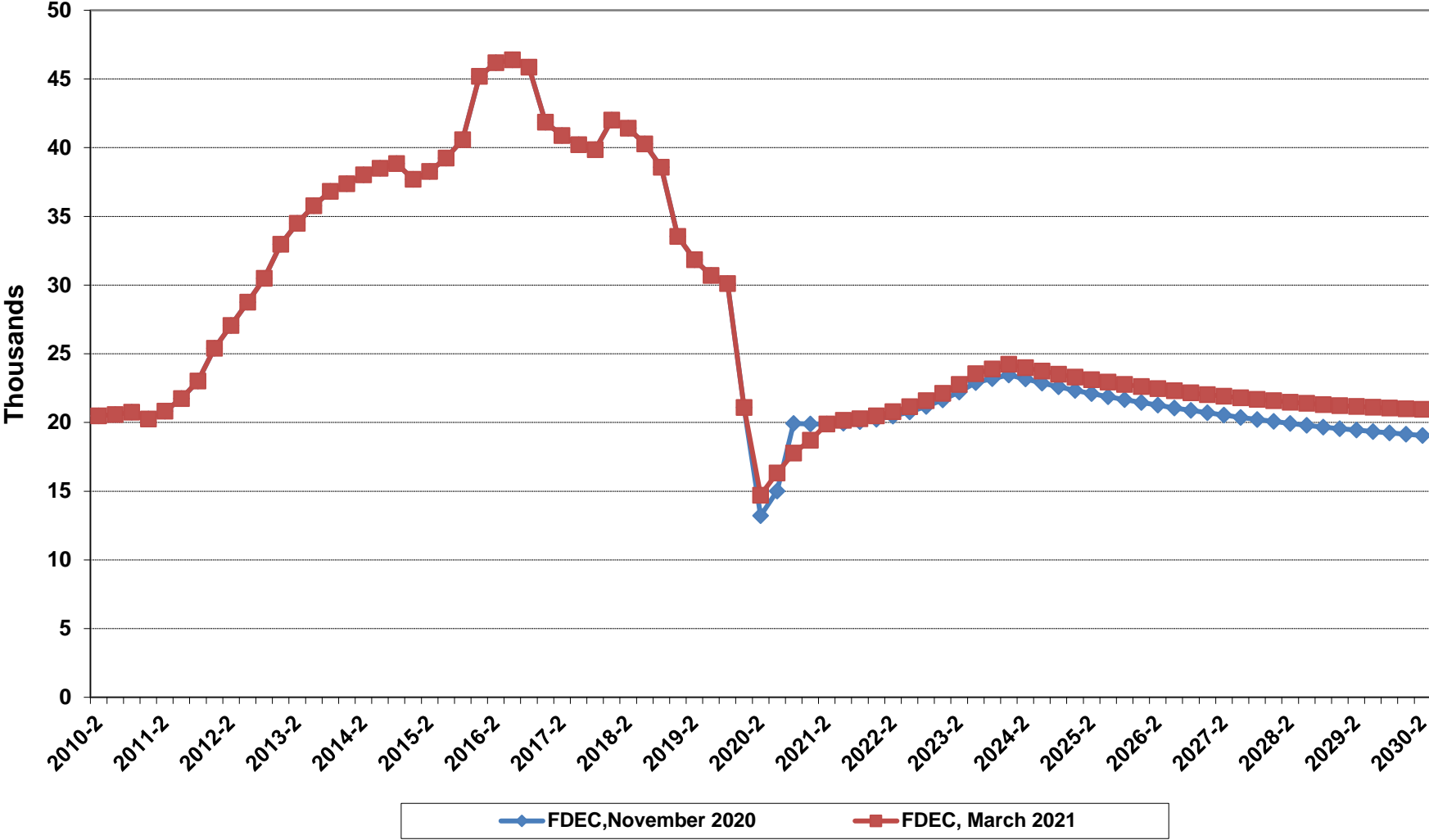
Growth In Florida Household Size



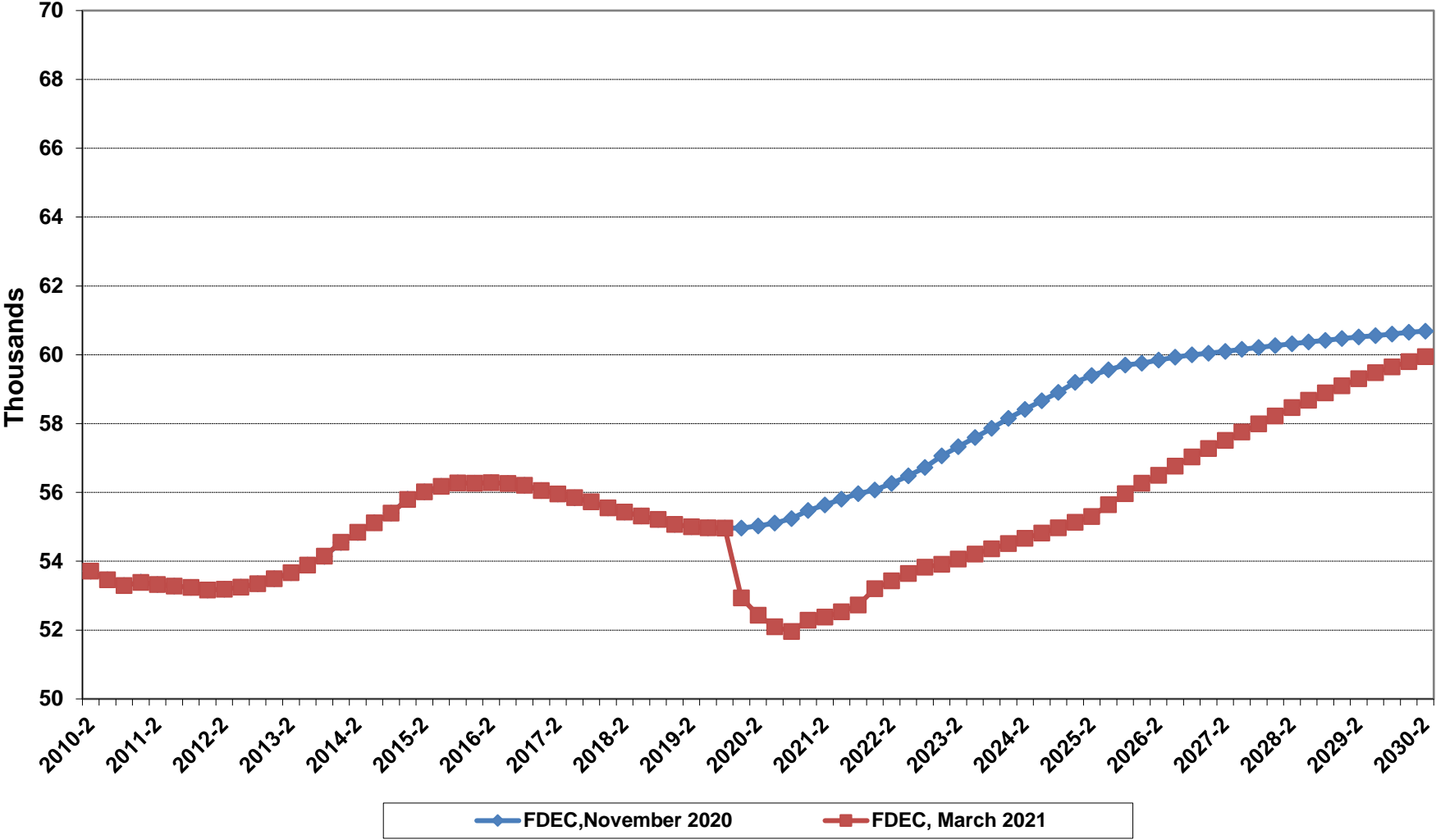
Florida Net Migration



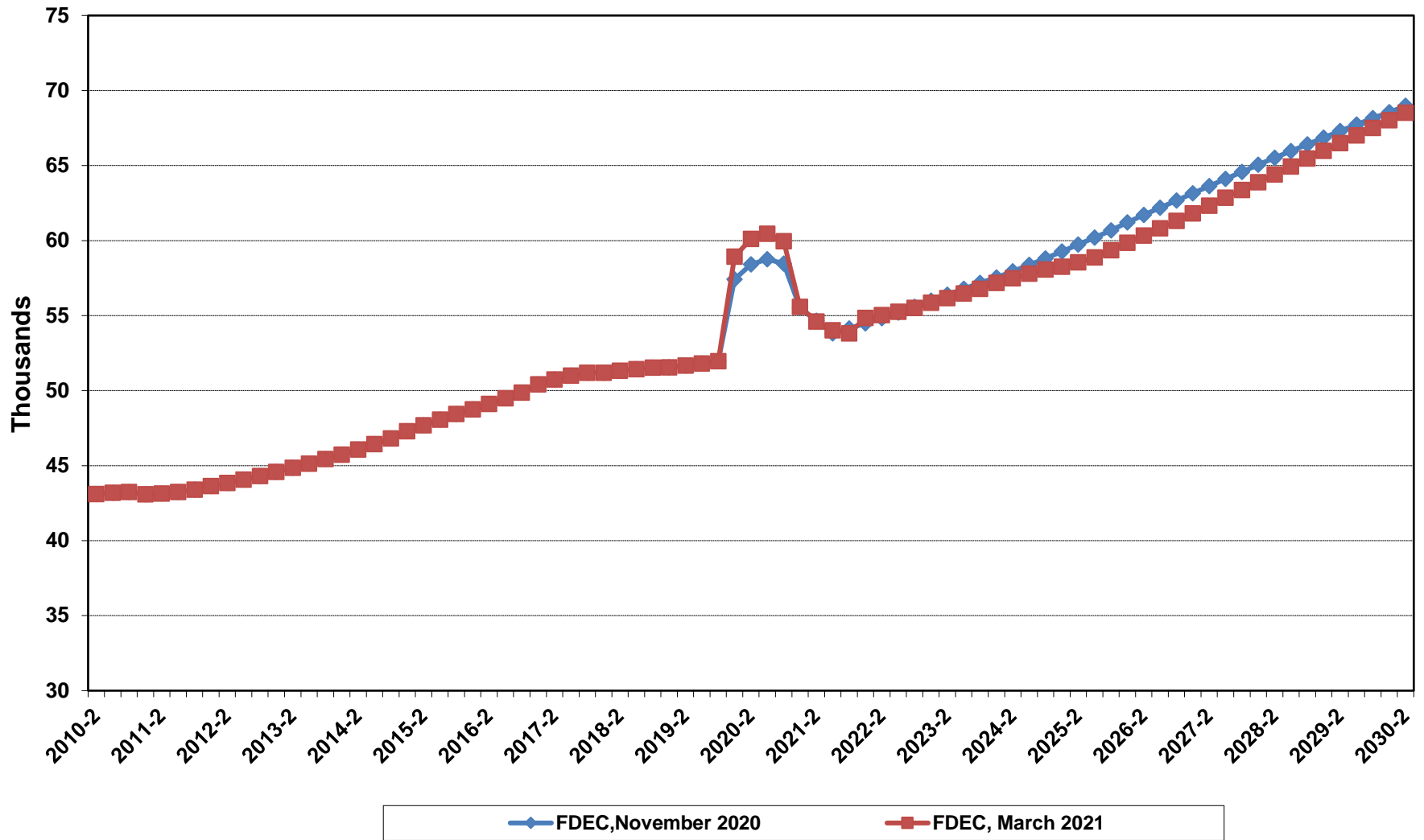
Florida Net International Migration



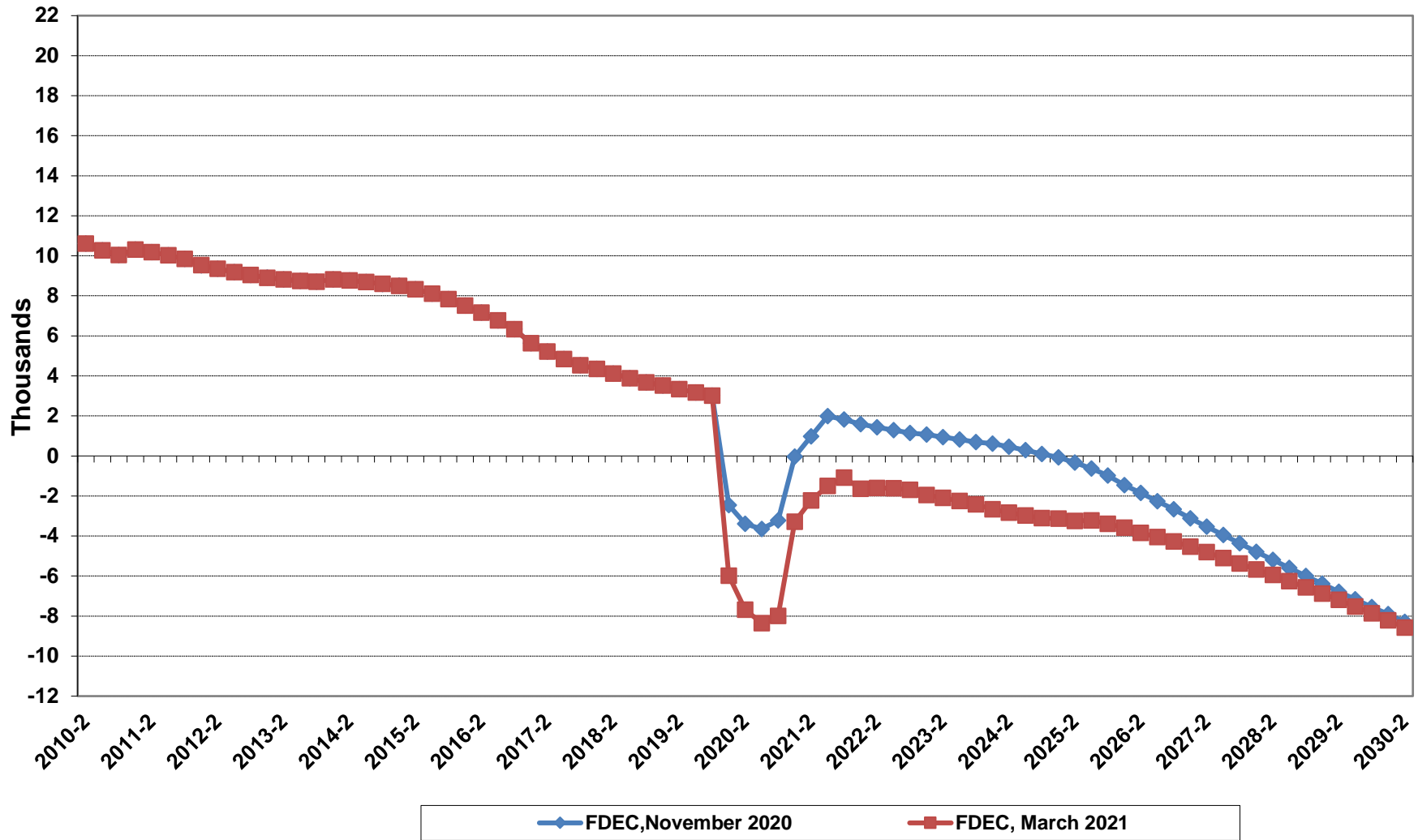
Florida Resident Births



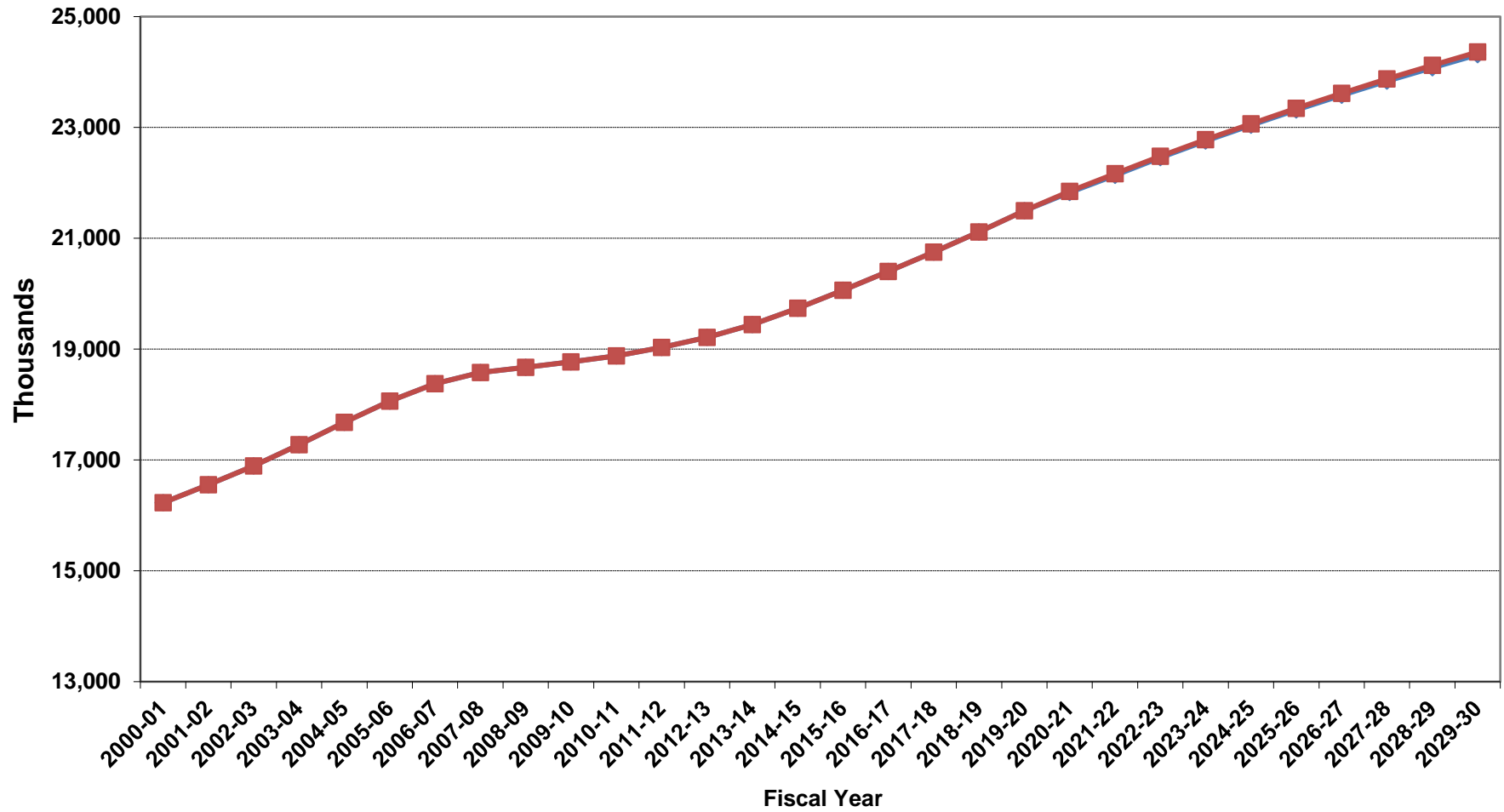
Florida Resident Deaths



Florida Net Natural Increase

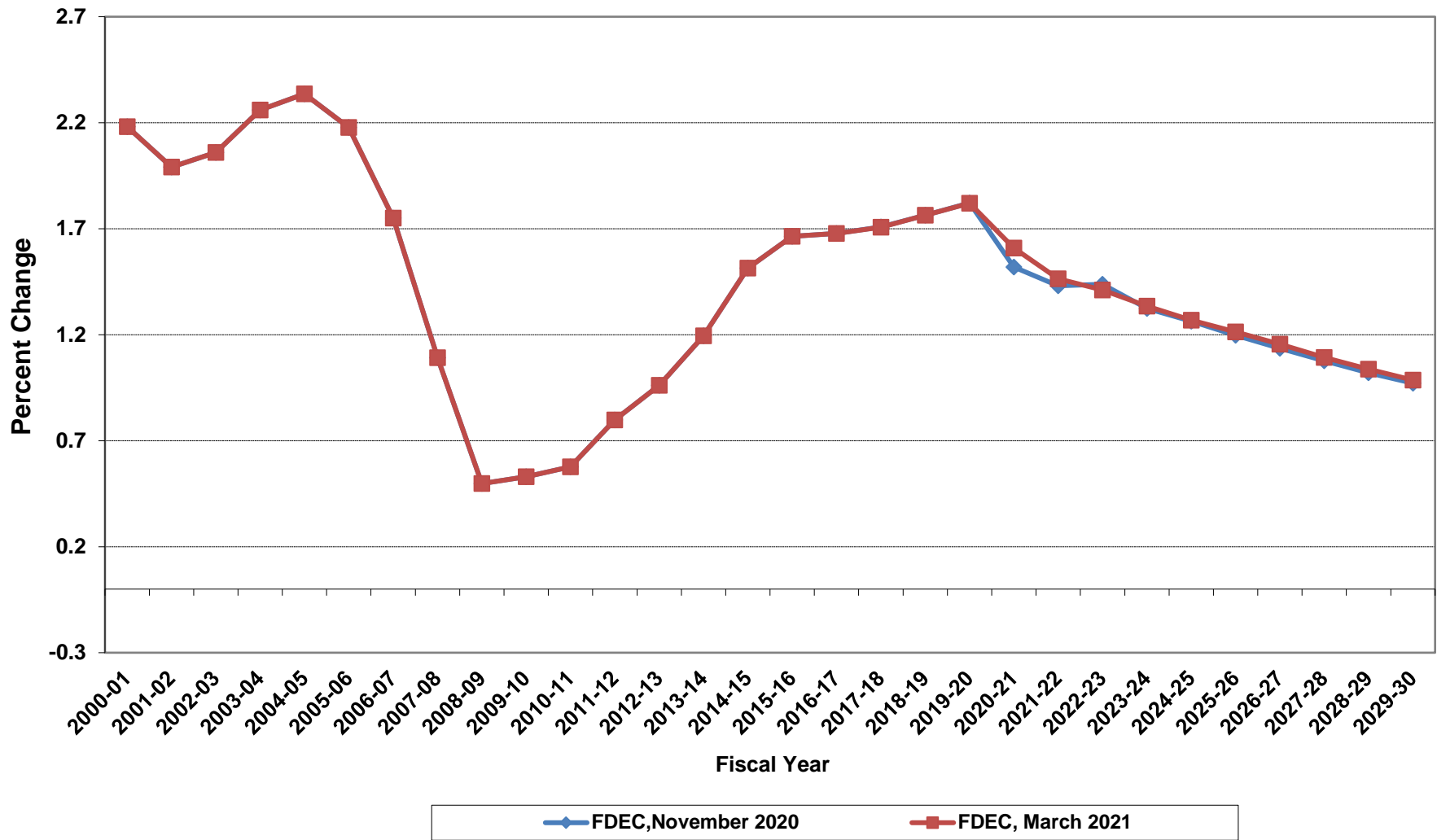


Florida Resident Population

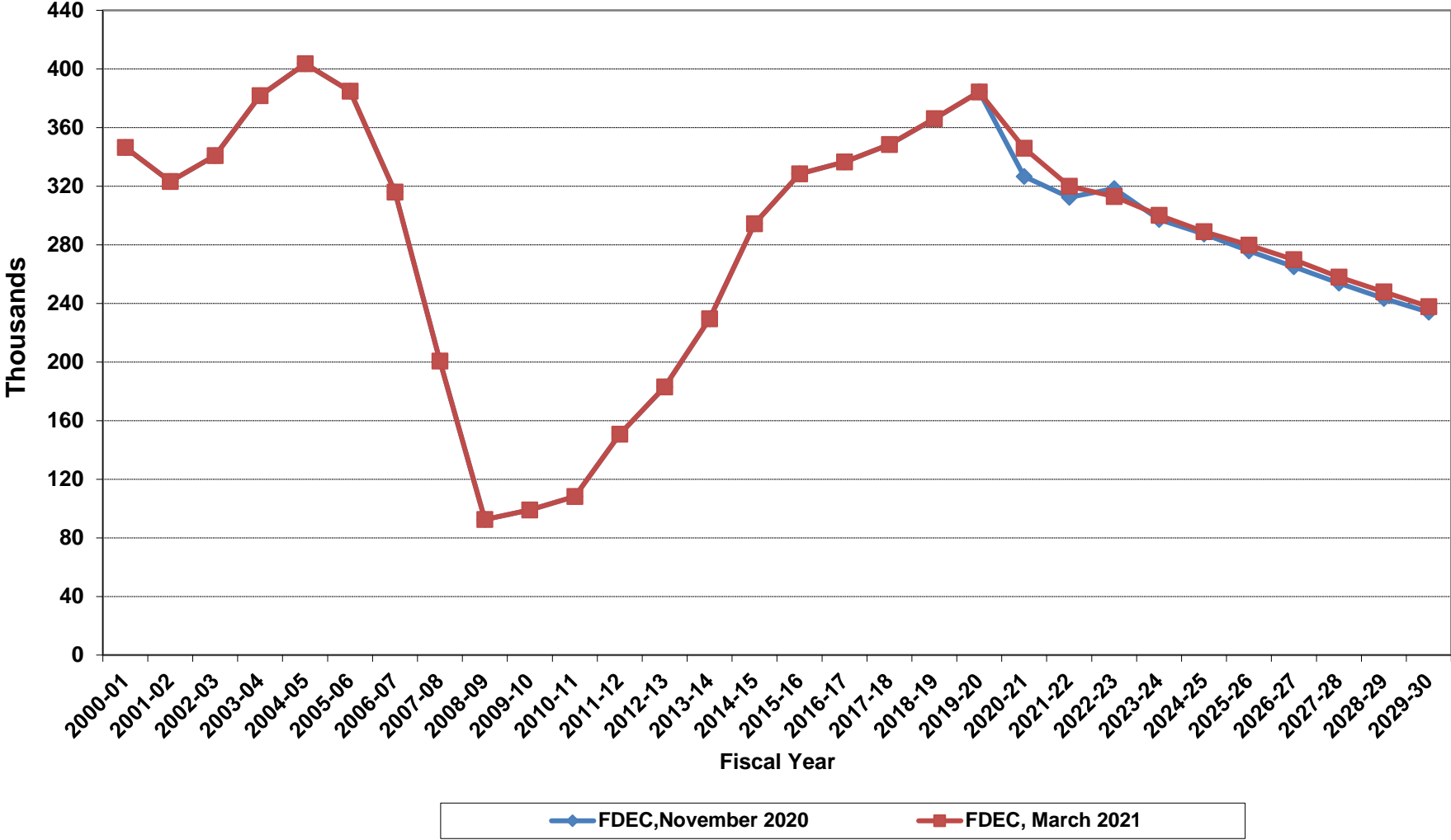


FDEC, November 2020 FDEC, March 2021

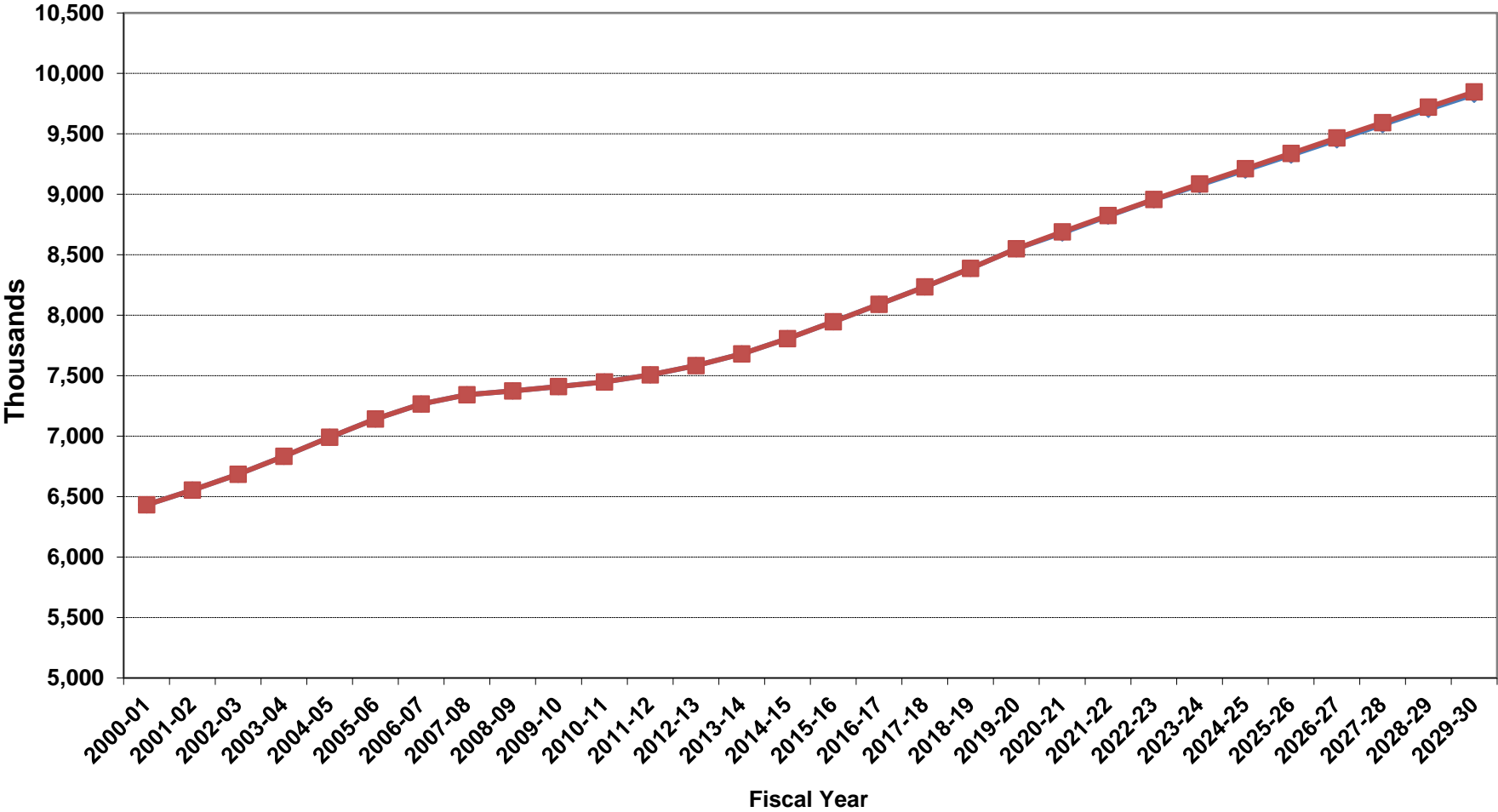
Growth In Florida Resident Population



Net Change In Florida Resident Population

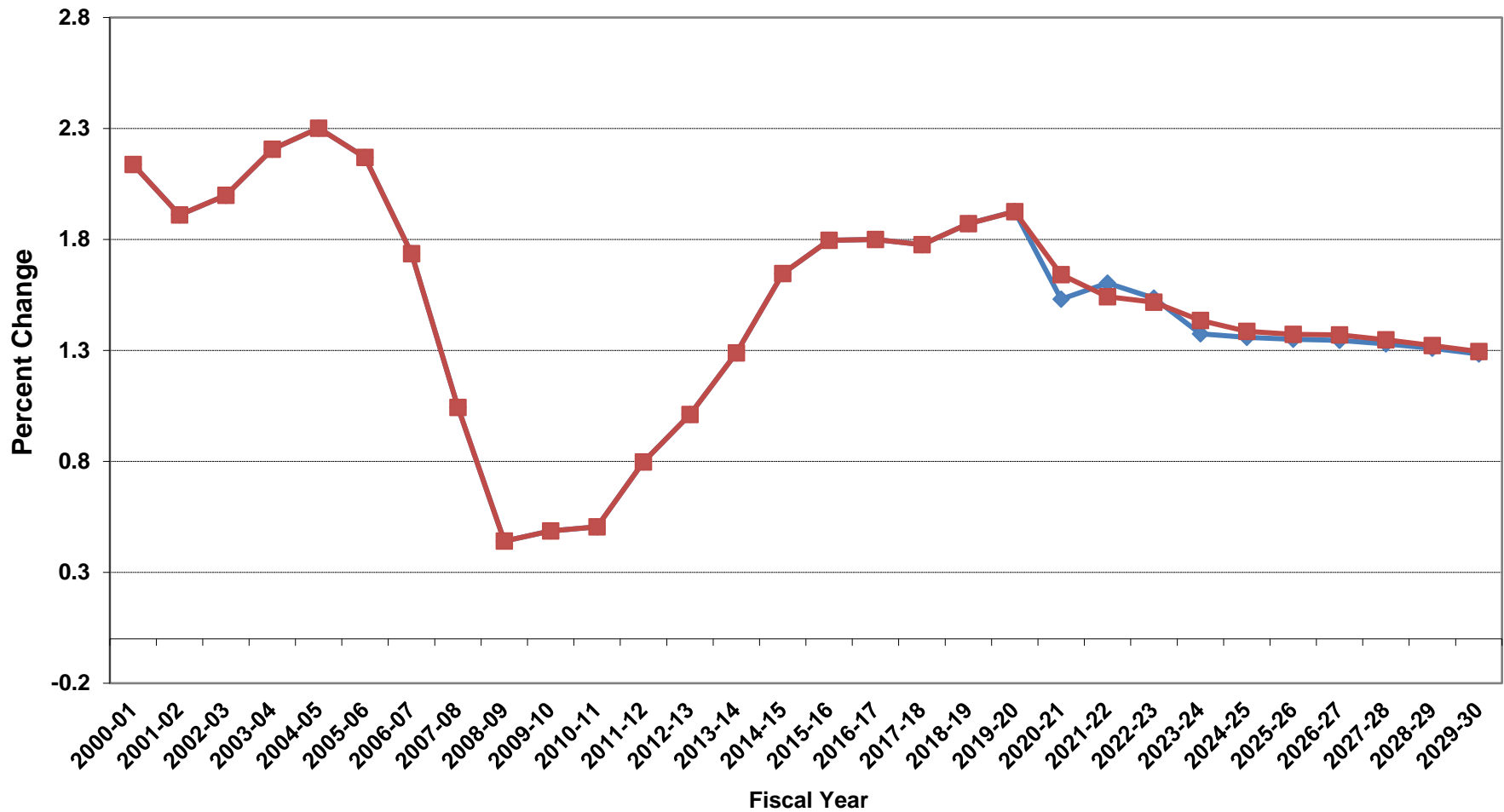


Florida Resident Households



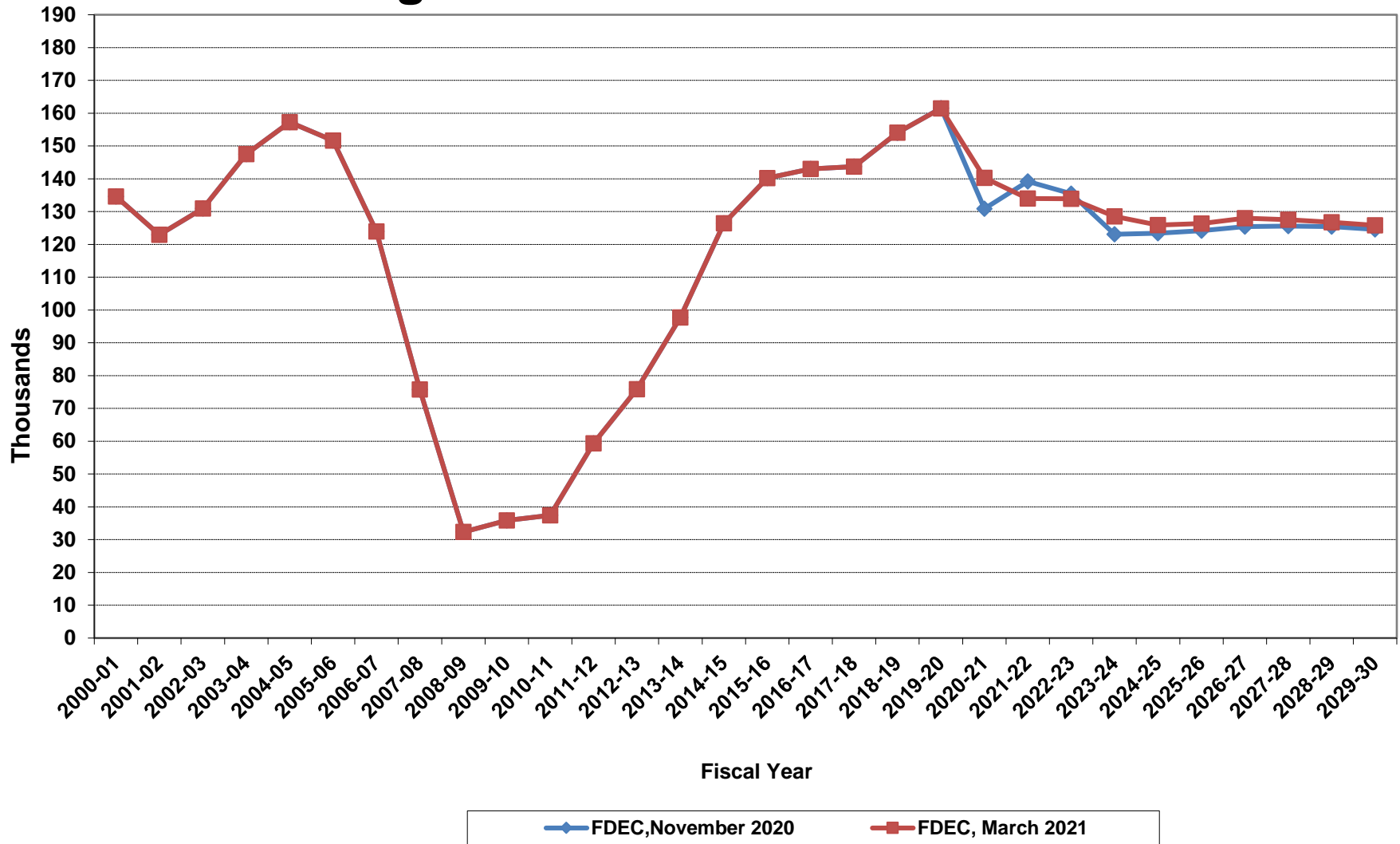
FDEC, November 2020 FDEC, March 2021

Growth In Florida Resident Households

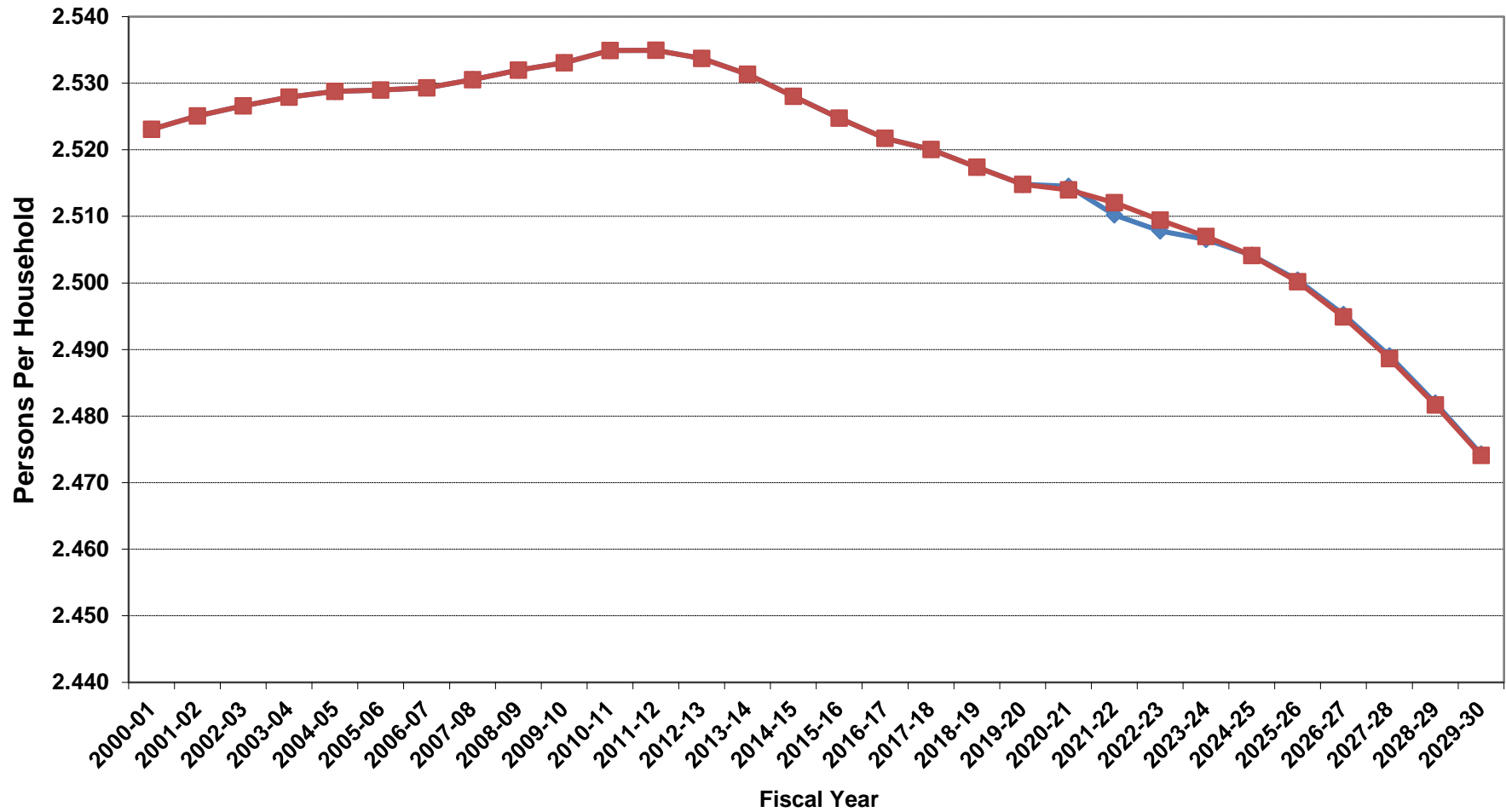


FDEC, November 2020 FDEC, March 2021

Net Change In Florida Resident Households



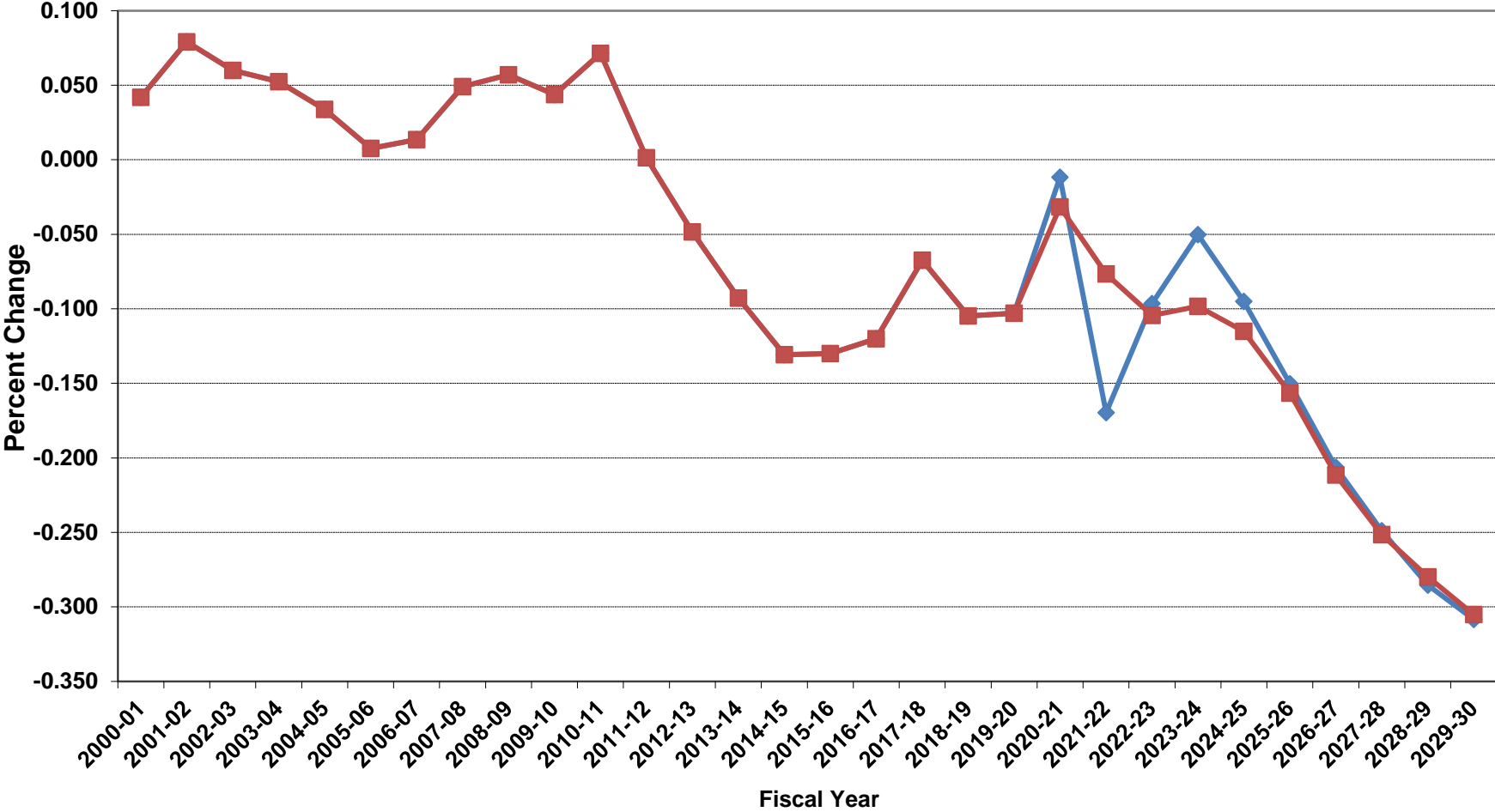
Average Florida Household Size



Fiscal Year

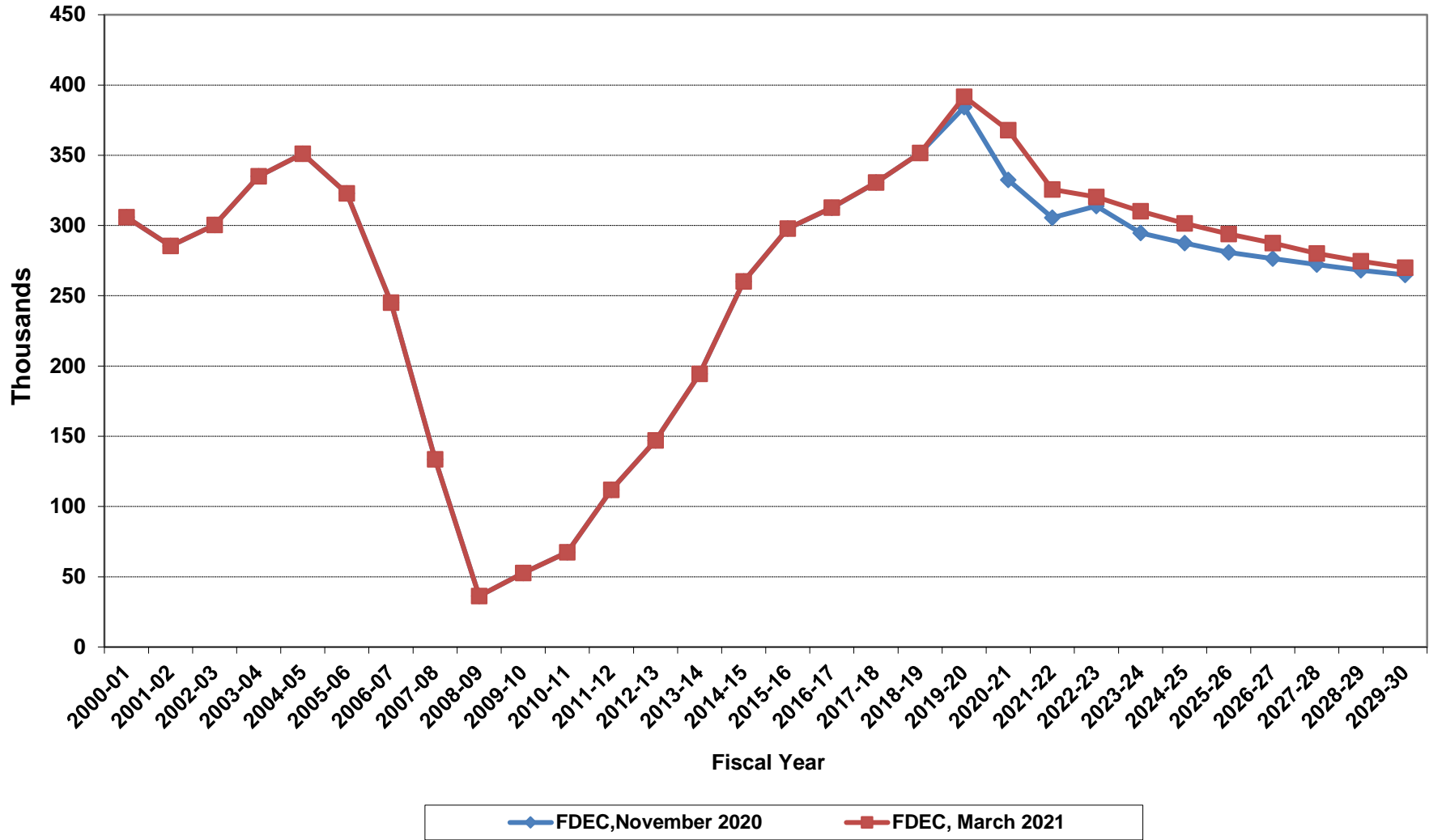
◆ FDEC, November 2020 ■ FDEC, March 2021

Growth In Average Florida Household Size

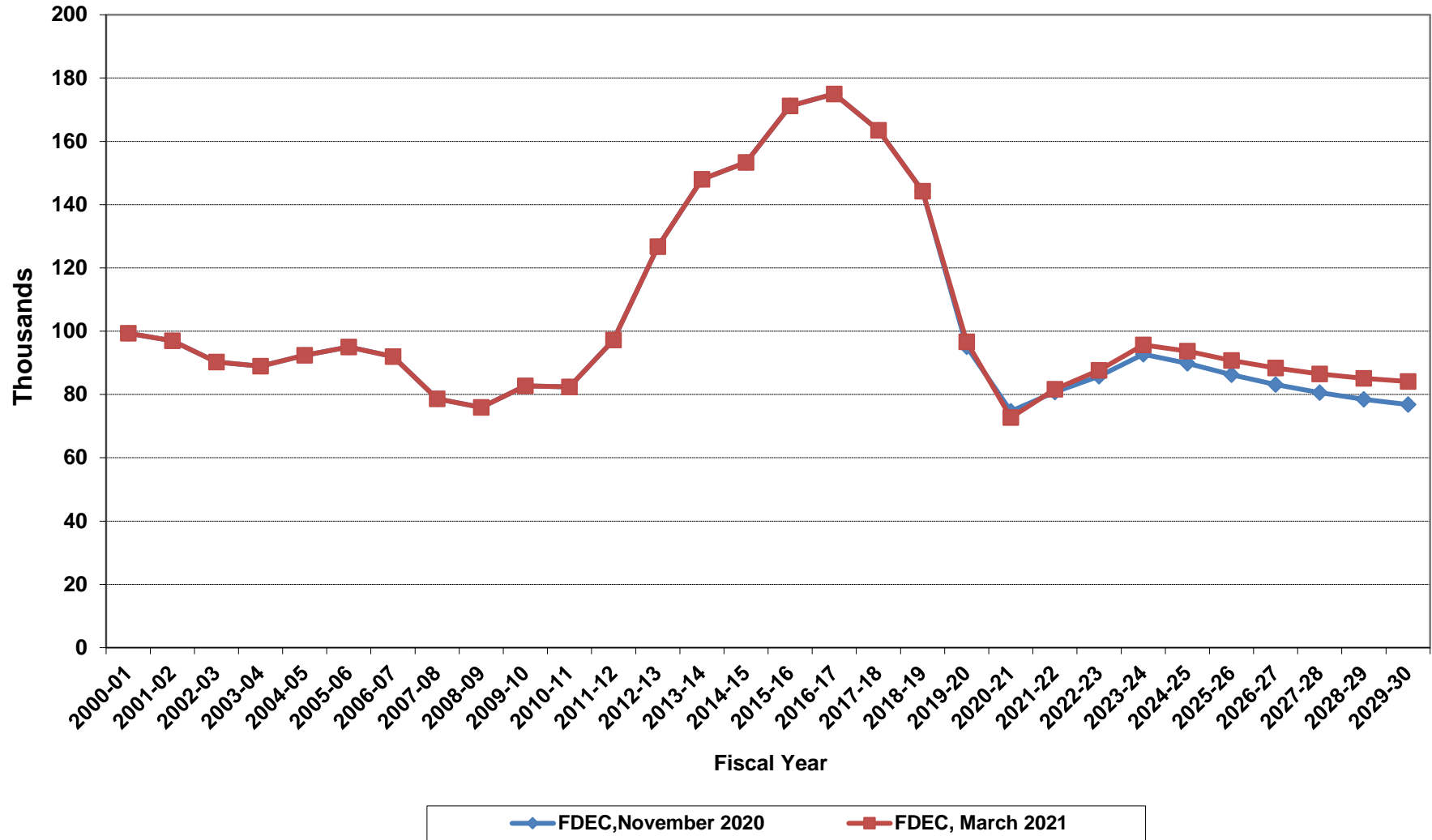


FDEC, November 2020 FDEC, March 2021

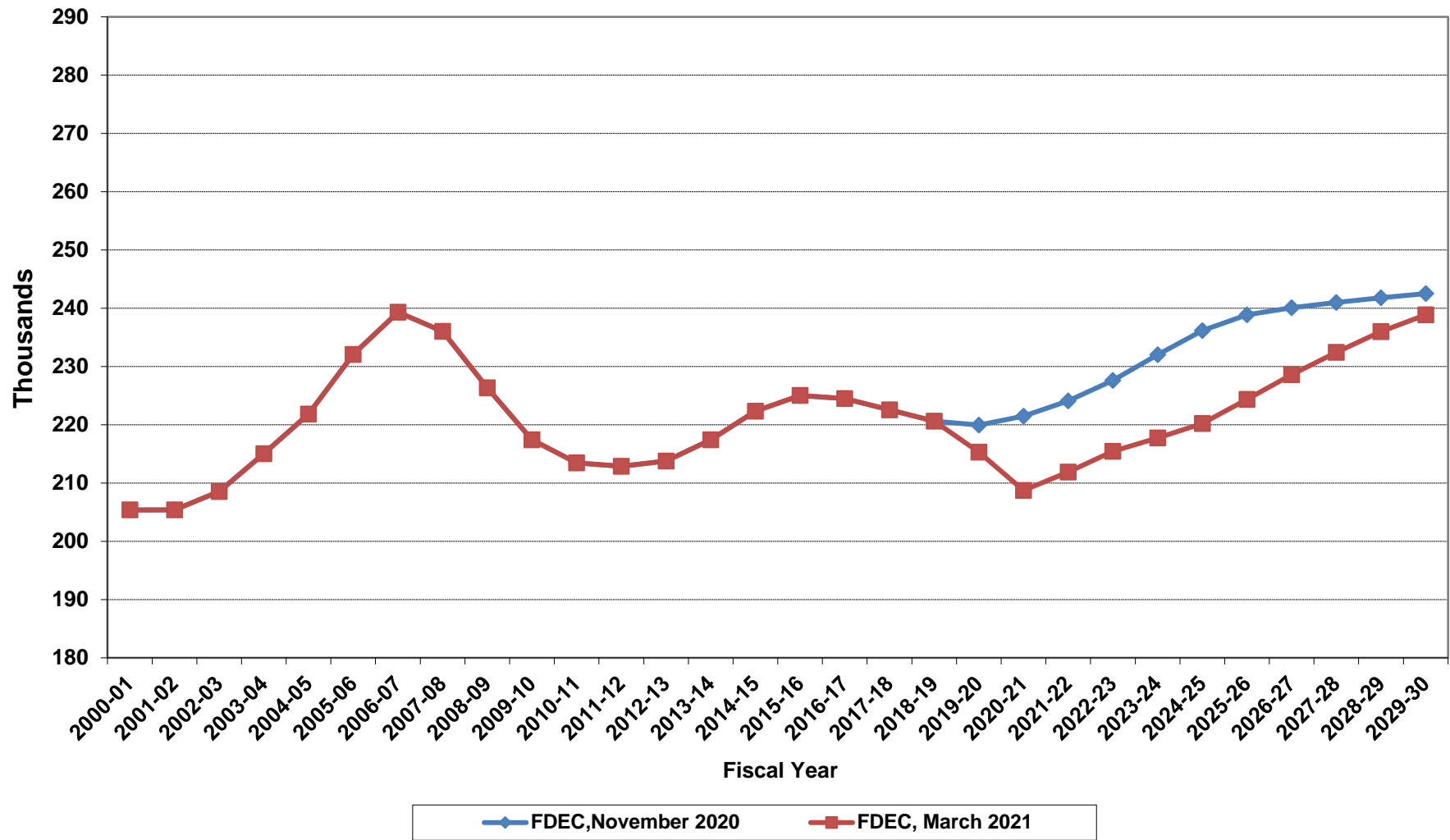
Florida Net Migration



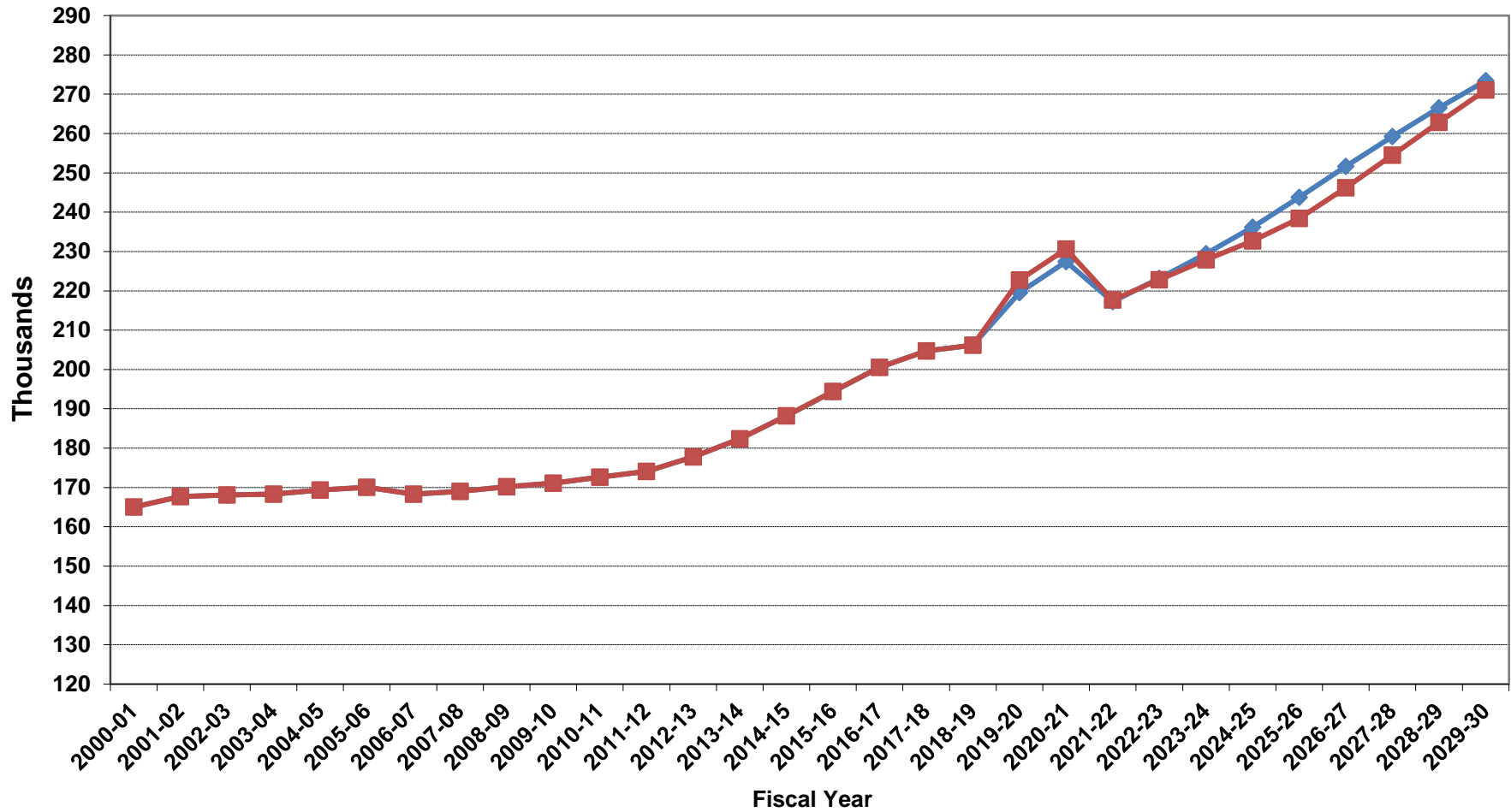
Florida Net International Migration



Florida Resident Live Births

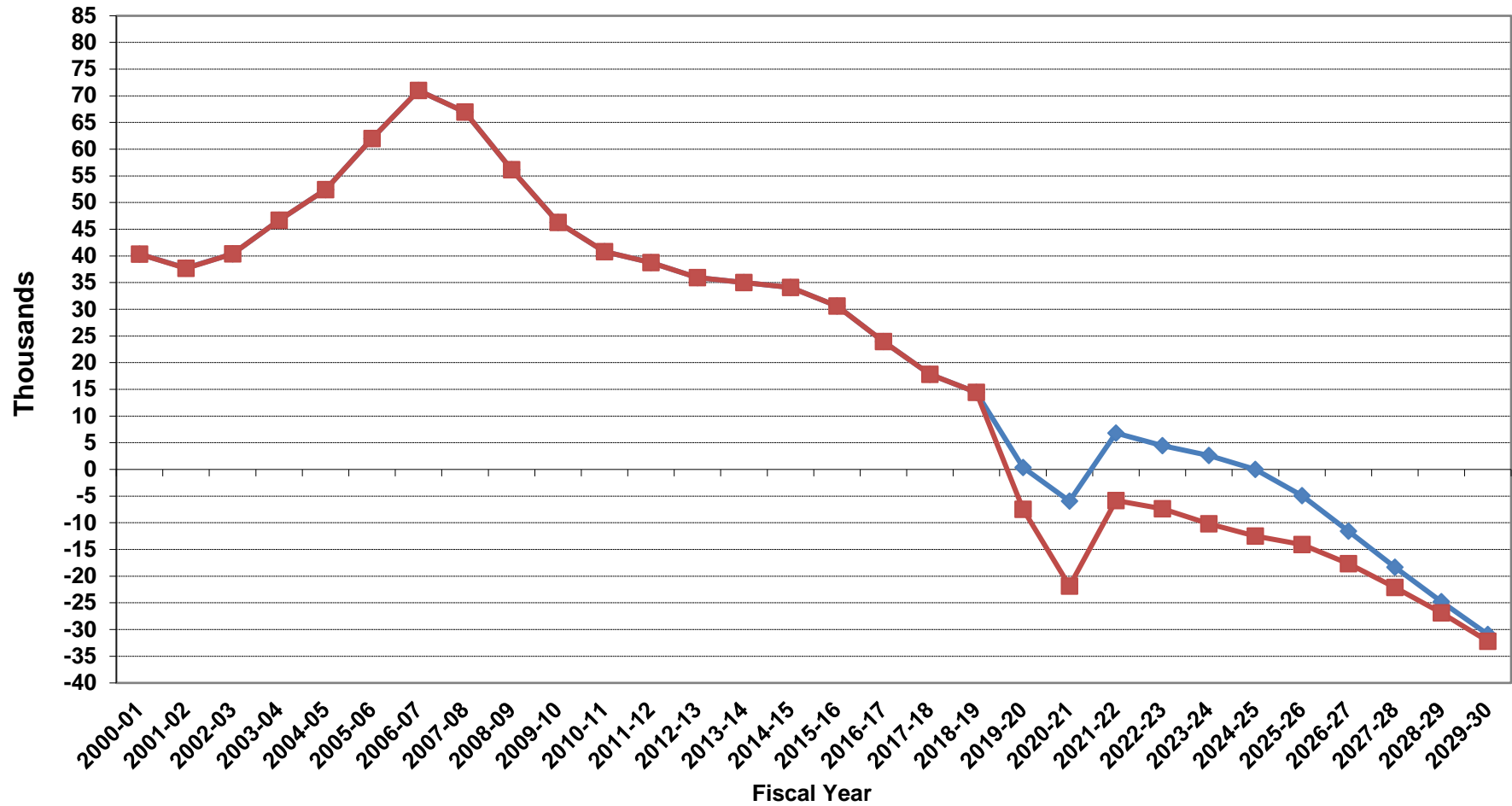


Florida Resident Deaths



FDEC, November 2020 FDEC, March 2021

Florida Net Natural Increase



FDEC, November 2020 FDEC, March 2021

Florida Population and Components of Change

Fiscal Year	Population (End of Fiscal Year)	Growth Rate	Annual Change in Population	Births	Deaths	Net Natural Increase	Net Migration
1950 - 51	2,981,346	6.50%	181,931	67,486	27,670	39,816	142,115
1951 - 52	3,155,442	5.84%	174,096	72,383	28,942	43,441	130,655
1952 - 53	3,312,521	4.98%	157,079	76,954	29,761	47,193	109,886
1953 - 54	3,504,323	5.79%	191,802	82,725	31,055	51,670	140,132
1954 - 55	3,747,400	6.94%	243,077	86,643	32,176	54,467	188,610
1955 - 56	4,046,062	7.97%	298,662	92,941	34,932	58,009	240,653
1956 - 57	4,370,045	8.01%	323,983	100,990	38,269	62,721	261,262
1957 - 58	4,629,510	5.94%	259,465	105,972	41,911	64,061	195,404
1958 - 59	4,812,270	3.95%	182,760	110,409	43,674	66,735	116,025
1959 - 60	4,998,508	3.87%	186,238	114,428	46,057	68,371	117,867
1960 - 61	5,185,913	3.75%	187,405	116,449	48,388	68,061	119,344
1961 - 62	5,367,899	3.51%	181,986	116,120	50,346	65,774	116,212
1962 - 63	5,553,522	3.46%	185,623	114,709	54,453	60,256	125,367
1963 - 64	5,728,499	3.15%	174,977	115,002	56,229	58,773	116,204
1964 - 65	5,881,195	2.67%	152,696	110,515	57,734	52,781	99,915
1965 - 66	6,065,768	3.14%	184,573	104,367	61,217	43,150	141,423
1966 - 67	6,249,674	3.03%	183,906	101,209	62,577	38,632	145,274
1967 - 68	6,441,756	3.07%	192,082	100,320	66,134	34,186	157,896
1968 - 69	6,633,546	2.98%	191,790	104,286	71,285	33,001	158,789
1969 - 70	6,861,118	3.43%	227,572	111,511	73,831	37,680	189,892
1970 - 71	7,233,583	5.43%	372,465	117,012	75,354	41,658	330,807
1971 - 72	7,681,540	6.19%	447,957	113,568	79,717	33,851	414,106
1972 - 73	8,157,883	6.20%	476,343	107,804	86,232	21,572	454,771
1973 - 74	8,515,208	4.38%	357,325	109,366	88,459	20,907	336,418
1974 - 75	8,648,587	1.57%	133,379	108,686	87,224	21,462	111,917
1975 - 76	8,782,975	1.55%	134,388	104,022	88,129	15,893	118,495
1976 - 77	8,972,678	2.16%	189,703	107,623	90,443	17,180	172,523
1977 - 78	9,225,527	2.82%	252,849	112,268	93,383	18,885	233,964
1978 - 79	9,523,728	3.23%	298,201	116,393	96,801	19,592	278,609
1979 - 80	9,914,652	4.10%	390,924	126,673	101,048	25,625	365,299
1980 - 81	10,212,969	3.01%	298,317	135,560	107,562	27,998	270,319
1981 - 82	10,492,851	2.74%	279,882	141,593	108,644	32,949	246,933
1982 - 83	10,748,466	2.44%	255,615	146,853	110,497	36,356	219,259
1983 - 84	11,065,911	2.95%	317,445	151,748	113,939	37,809	279,636
1984 - 85	11,405,533	3.07%	339,622	159,819	117,539	42,280	297,342
1985 - 86	11,740,069	2.93%	334,536	165,857	122,453	43,404	291,132
1986 - 87	12,083,241	2.92%	343,172	170,819	124,946	45,873	297,299
1987 - 88	12,410,339	2.71%	327,098	179,541	129,413	50,128	276,970
1988 - 89	12,723,719	2.53%	313,380	188,390	131,992	56,398	256,982
1989 - 90	13,017,296	2.31%	293,577	197,181	132,503	64,678	228,899
1990 - 91	13,326,892	2.38%	309,596	197,180	134,093	63,087	246,509
1991 - 92	13,552,021	1.69%	225,129	191,810	136,280	55,530	169,599
1992 - 93	13,802,571	1.85%	250,550	192,051	142,087	49,964	200,586
1993 - 94	14,120,323	2.30%	317,752	191,840	146,101	45,739	272,013
1994 - 95	14,406,418	2.03%	286,095	189,292	149,161	40,131	245,964
1995 - 96	14,701,040	2.05%	294,622	188,584	152,570	36,014	258,608
1996 - 97	15,012,615	2.12%	311,575	190,587	153,067	37,520	274,055
1997 - 98	15,310,069	1.98%	297,454	194,242	155,080	39,162	258,292
1998 - 99	15,680,164	2.42%	370,095	195,897	159,988	35,909	334,186
1999 - 00	16,069,889	2.49%	389,725	200,302	162,489	37,813	351,912
2000 - 01	16,385,615	1.96%	315,726	205,798	164,919	40,879	274,847
2001 - 02	16,718,076	2.03%	332,461	205,164	167,812	37,352	295,109
2002 - 03	17,074,258	2.13%	356,182	208,403	168,079	40,324	315,858
2003 - 04	17,475,944	2.35%	401,686	215,298	168,302	46,996	354,690
2004 - 05	17,876,215	2.29%	400,271	221,533	169,302	52,231	348,040
2005 - 06	18,236,885	2.02%	360,670	232,019	170,303	61,716	298,954
2006 - 07	18,501,231	1.45%	264,346	239,635	168,117	71,518	192,828
2007 - 08	18,636,837	0.73%	135,606	236,065	168,966	67,099	68,507
2008 - 09	18,711,844	0.40%	75,007	226,337	170,615	55,722	19,285
2009 - 10	18,826,492	0.61%	114,648	217,408	171,121	46,287	68,361

Florida Population and Components of Change

Fiscal Year	Population (End of Fiscal Year)	Growth Rate	Annual Change in Population	Births	Deaths	Net Natural Increase	Net Migration
2010 - 11	18,941,738	0.61%	115,246	213,468	172,661	40,807	74,439
2011 - 12	19,118,952	0.94%	177,214	212,876	174,120	38,756	138,458
2012 - 13	19,314,342	1.02%	195,390	213,762	177,810	35,952	159,438
2013 - 14	19,580,074	1.38%	265,732	217,422	182,382	35,040	230,692
2014 - 15	19,897,006	1.62%	316,932	222,338	188,217	34,121	282,811
2015 - 16	20,234,062	1.69%	337,056	225,014	194,386	30,628	306,428
2016 - 17	20,562,421	1.62%	328,359	224,476	200,526	23,950	304,409
2017 - 18	20,930,666	1.79%	368,245	222,547	204,707	17,840	350,405
2018 - 19	21,306,460	1.80%	375,794	220,606	206,185	14,421	361,373
2019 - 20	21,682,372	1.76%	375,912	215,303	222,783	-7,480	383,392
2020 - 21	22,005,587	1.49%	323,215	208,726	230,590	-21,864	345,079
2021 - 22	22,324,145	1.45%	318,558	211,898	217,701	-5,803	324,361
2022 - 23	22,630,366	1.37%	306,221	215,442	222,794	-7,352	313,573
2023 - 24	22,924,688	1.30%	294,322	217,754	227,925	-10,171	304,493
2024 - 25	23,208,861	1.24%	284,173	220,226	232,685	-12,459	296,632
2025 - 26	23,484,328	1.19%	275,467	224,378	238,430	-14,052	289,519
2026 - 27	23,748,283	1.12%	263,955	228,589	246,252	-17,663	281,618
2027 - 28	24,000,829	1.06%	252,546	232,426	254,511	-22,085	274,631
2028 - 29	24,243,782	1.01%	242,953	235,971	262,860	-26,889	269,842
2029 - 30	24,476,299	0.96%	232,517	238,878	271,058	-32,180	264,697
2030 - 31	24,698,739	0.91%	222,440	240,843	279,047	-38,204	260,644
2031 - 32	24,911,681	0.86%	212,942	241,867	286,800	-44,933	257,875
2032 - 33	25,116,828	0.82%	205,147	242,464	294,266	-51,802	256,949
2033 - 34	25,315,998	0.79%	199,170	243,000	300,689	-57,689	256,859
2034 - 35	25,509,898	0.77%	193,900	243,585	306,329	-62,744	256,644
2035 - 36	25,698,320	0.74%	188,422	244,219	311,628	-67,409	255,831
2036 - 37	25,880,219	0.71%	181,899	244,887	318,086	-73,199	255,098
2037 - 38	26,057,116	0.68%	176,897	245,545	324,097	-78,552	255,449
2038 - 39	26,229,672	0.66%	172,556	246,197	329,295	-83,098	255,654