

Demographic Estimating Conference
Executive Summary
December 13, 2021

The Demographic Estimating Conference met on December 13, 2021, to adopt a new population forecast. The new estimates reflect the most recent demographic and economic-related data and trends, including the 2020 Census count of population and households, revised intercensal population estimates from 2011 through 2019 based on the 2020 Census count, and the official state April 1, 2021 estimate of population.

The 2020 Census population count of 21,538,187 was slightly lower than the previously adopted estimate of 21,596,068 (-57,881, -0.27%). Based on this difference and other demographic and economic data, a revised historical series was estimated for 2011 through 2019 (shown in green in the table below). Starting from the lower 2020 population level, population growth over the past year (April 1, 2020 to April 1, 2021) was estimated at 360,758 (1.67%). This was an incremental increase relative to the last conference, with the change reflecting the stronger than expected net migration. Natural increase, the other component of population growth, was more negative than expected due to increased deaths.

Compared to the last conference, the short-term population projections (shown in blue in the table below) were increased, maintaining the strengthened net-migration projections throughout. In addition, natural increase is expected to remain negative throughout most of the forecast horizon as deaths continue to outpace births. Overall, the forecast keeps the pattern that the Conference has long been expecting, with growth slowing modestly each year. Average household size was adjusted to incorporate the 2020 Census data, then held relatively constant in the near-term, reflecting the economic impact from the pandemic on household dynamics and structure; all else being equal, larger household sizes lead to a lower number of households.

April 1	Population	Change from the Prior Period		Change from the Prior Forecast
		Percent	Numeric	
2010	18,801,332			
2011	18,949,860	0.79%	148,528	44,790
2012	19,134,956	0.98%	185,096	60,522
2013	19,337,590	1.06%	202,634	78,047
2014	19,585,096	1.28%	247,506	77,727
2015	19,879,230	1.50%	294,134	64,047
2016	20,201,450	1.62%	322,220	52,796
2017	20,524,865	1.60%	323,415	40,723
2018	20,854,945	1.61%	330,080	14,377
2019	21,189,849	1.61%	334,904	-18,740
2020	21,538,187	1.64%	348,338	-57,881
2021	21,898,945	1.67%	360,758	-26,840
2022	22,247,451	1.59%	348,506	2,022
2023	22,564,419	1.42%	316,968	9,415
2024	22,870,046	1.35%	305,627	17,927
2025	23,164,008	1.29%	293,962	25,455
2026	23,448,282	1.23%	284,274	31,830
2027	23,720,981	1.16%	272,699	37,515
2028	23,982,341	1.10%	261,360	43,765
2029	24,232,373	1.04%	250,032	48,354
2030	24,471,129	0.99%	238,756	52,002
2031	24,699,012	0.93%	227,883	54,952

Between April 1, 2021 and April 1, 2026, population growth is expected to average 309,867 net new residents per year (849 per day), representing a compound growth rate of 1.41% over this five-year time horizon. These increases are analogous to adding a city about the size of Orlando every year.

Florida Demographic Estimating Conference

Tables

Conference Packet

December 13, 2021

Florida Resident Population

April 1

Year	Florida Demographic Estimating Conference March 2021			Florida Demographic Estimating Conference December 2021			
	Population	% Change	Change	Population	% Change	Change	
2000	15,982,824	2.58%	402,580	15,982,824	2.58%	402,580	
2001	16,305,100	2.02%	322,276	16,305,100	2.02%	322,276	
2002	16,634,256	2.02%	329,156	16,634,256	2.02%	329,156	
2003	16,979,706	2.08%	345,450	16,979,706	2.08%	345,450	
2004	17,374,824	2.33%	395,118	17,374,824	2.33%	395,118	
2005	17,778,156	2.32%	403,332	17,778,156	2.32%	403,332	
2006	18,154,475	2.12%	376,319	18,154,475	2.12%	376,319	
2007	18,446,768	1.61%	292,293	18,446,768	1.61%	292,293	
2008	18,613,905	0.91%	167,137	18,613,905	0.91%	167,137	
2009	18,687,425	0.39%	73,520	18,687,425	0.39%	73,520	
2010	18,801,332	0.61%	113,907	18,801,332	0.61%	113,907	
2011	18,905,070	0.55%	103,738	18,949,860	0.79%	148,528	
2012	19,074,434	0.90%	169,364	19,134,956	0.98%	185,096	
2013	19,259,543	0.97%	185,109	19,337,590	1.06%	202,634	
2014	19,507,369	1.29%	247,826	19,585,096	1.28%	247,506	
2015	19,815,183	1.58%	307,814	19,879,230	1.50%	294,134	
2016	20,148,654	1.68%	333,471	20,201,450	1.62%	322,220	
2017	20,484,142	1.67%	335,488	20,524,865	1.60%	323,415	
2018	20,840,568	1.74%	356,426	20,854,945	1.61%	330,080	
2019	21,208,589	1.77%	368,021	21,189,849	1.61%	334,904	
2020	21,596,068	1.83%	387,479	21,538,187	1.64%	348,338	
2021	21,925,785	1.53%	329,717	21,898,945	1.67%	360,758	
Begins forecast							
2022	22,245,429	1.46%	319,644	22,247,451	1.59%	348,506	
2023	22,555,004	1.39%	309,575	22,564,419	1.42%	316,968	
2024	22,852,119	1.32%	297,115	22,870,046	1.35%	305,627	
2025	23,138,553	1.25%	286,434	23,164,008	1.29%	293,962	
			5-Year Averages				5-Year Averages
2030	24,419,127	1.08%	256,115	24,471,129	1.10%	261,424	
2035	25,461,863	0.84%	208,547	25,520,837	0.84%	209,942	
2040	26,356,415	0.69%	178,910	26,405,472	0.68%	176,927	
2045	27,149,835	0.59%	158,684	27,176,715	0.58%	154,249	

Florida Resident Households

April 1

Year	Florida Demographic Estimating Conference March 2021			Florida Demographic Estimating Conference December 2021			
	Households	% Change	Change	Households	% Change	Change	
2000	6,338,075	2.52%	155,729	6,338,075	2.65%	163,703	
2001	6,467,215	2.04%	129,140	6,460,934	1.94%	122,859	
2002	6,599,035	2.04%	131,820	6,586,806	1.95%	125,872	
2003	6,737,370	2.10%	138,335	6,719,399	2.01%	132,593	
2004	6,895,469	2.35%	158,099	6,872,318	2.28%	152,919	
2005	7,056,889	2.34%	161,420	7,029,787	2.29%	157,469	
2006	7,207,645	2.14%	150,756	7,178,486	2.12%	148,699	
2007	7,312,907	1.46%	105,262	7,292,550	1.59%	114,064	
2008	7,368,319	0.76%	55,412	7,354,880	0.85%	62,330	
2009	7,386,570	0.25%	18,251	7,379,964	0.34%	25,084	
2010	7,420,802	0.46%	34,232	7,420,802	0.55%	40,838	
2011	7,456,791	0.48%	35,989	7,456,791	0.48%	35,989	
2012	7,525,335	0.92%	68,544	7,525,335	0.92%	68,544	
2013	7,602,417	1.02%	77,082	7,602,417	1.02%	77,082	
2014	7,708,538	1.40%	106,121	7,708,538	1.40%	106,121	
2015	7,840,780	1.72%	132,242	7,840,780	1.72%	132,242	
2016	7,982,938	1.81%	142,158	7,982,938	1.81%	142,158	
2017	8,125,176	1.78%	142,238	8,125,176	1.78%	142,238	
2018	8,271,058	1.80%	145,882	8,271,058	1.80%	145,882	
2019	8,427,696	1.89%	156,638	8,427,696	1.89%	156,638	
2020	8,589,056	1.91%	161,360	8,529,067	1.20%	101,371	
Begins forecast							
2021	8,722,081	1.55%	133,025	8,676,264	1.73%	147,197	
2022	8,857,859	1.56%	135,778	8,822,896	1.69%	146,632	
2023	8,990,161	1.49%	132,302	8,957,563	1.53%	134,667	
2024	9,117,745	1.42%	127,584	9,087,981	1.46%	130,418	
2025	9,243,073	1.37%	125,328	9,215,760	1.41%	127,779	
			5-Year Averages				5-Year Averages
2030	9,877,726	1.34%	126,931	9,835,820	1.31%	124,012	
2035	10,463,467	1.16%	117,148	10,374,207	1.07%	107,677	
2040	10,942,885	0.90%	95,884	10,832,309	0.87%	91,620	
2045	11,310,270	0.66%	73,477	11,205,402	0.68%	74,619	

QUARTERLY FORECAST TABLES

	<u>2010-2</u>	<u>2010-3</u>	<u>2010-4</u>	<u>2011-1</u>	<u>2011-2</u>	<u>2011-3</u>	<u>2011-4</u>	<u>2012-1</u>	<u>2012-2</u>	<u>2012-3</u>	<u>2012-4</u>	<u>2013-1</u>	<u>2013-2</u>	<u>2013-3</u>	<u>2013-4</u>	<u>2014-1</u>
Population																
FDEC, March 2021	18,813.9	18,838.3	18,862.7	18,890.2	18,923.4	18,962.8	19,006.3	19,051.6	19,096.7	19,141.2	19,186.6	19,234.6	19,286.9	19,344.2	19,406.4	19,473.0
FDEC, December 2021	18,818.4	18,853.5	18,890.3	18,929.6	18,971.6	19,016.3	19,063.0	19,110.8	19,159.2	19,208.1	19,258.4	19,310.8	19,366.1	19,424.7	19,486.7	19,551.8
Population Growth Rate																
FDEC, March 2021	0.59	0.52	0.52	0.58	0.71	0.83	0.92	0.96	0.95	0.94	0.95	1.01	1.09	1.19	1.29	1.38
FDEC, December 2021	0.72	0.75	0.78	0.83	0.89	0.95	0.99	1.01	1.02	1.03	1.05	1.09	1.15	1.22	1.28	1.34
Net Change in Population																
FDEC, March 2021	27.9	24.4	24.4	27.5	33.2	39.4	43.5	45.3	45.1	44.5	45.4	48.0	52.3	57.3	62.1	66.6
FDEC, December 2021	33.5	35.0	36.9	39.2	42.0	44.7	46.7	47.8	48.4	48.9	50.2	52.4	55.3	58.6	61.9	65.1
Households																
FDEC, March 2021	7,425.0	7,433.2	7,441.5	7,451.3	7,463.9	7,479.6	7,497.3	7,515.9	7,534.5	7,552.9	7,571.8	7,591.9	7,614.1	7,638.5	7,665.1	7,693.7
FDEC, December 2021	7,425.0	7,433.2	7,441.5	7,451.3	7,463.9	7,479.6	7,497.3	7,515.9	7,534.5	7,552.9	7,571.8	7,591.9	7,614.1	7,638.5	7,665.1	7,693.8
Household Growth Rate																
FDEC, March 2021	0.50	0.44	0.45	0.53	0.68	0.84	0.95	1.00	0.99	0.98	1.00	1.07	1.17	1.29	1.40	1.50
FDEC, December 2021	0.50	0.44	0.45	0.53	0.68	0.84	0.95	1.00	0.99	0.98	1.00	1.07	1.17	1.29	1.40	1.50
Net Change in Households																
FDEC, March 2021	9.3	8.2	8.3	9.8	12.6	15.6	17.7	18.6	18.6	18.4	18.9	20.1	22.1	24.4	26.6	28.6
FDEC, December 2021	9.3	8.2	8.3	9.8	12.6	15.6	17.7	18.6	18.6	18.4	18.9	20.1	22.1	24.4	26.6	28.6
Household Size																
FDEC, March 2021	2.534	2.534	2.535	2.535	2.535	2.535	2.535	2.535	2.535	2.534	2.534	2.534	2.533	2.532	2.532	2.531
FDEC, December 2021	2.534	2.536	2.539	2.540	2.542	2.542	2.543	2.543	2.543	2.543	2.543	2.544	2.543	2.543	2.542	2.541
Household Size Growth Rate																
FDEC, March 2021	0.09	0.08	0.07	0.05	0.02	-0.01	-0.03	-0.04	-0.04	-0.04	-0.05	-0.06	-0.08	-0.09	-0.11	-0.12
FDEC, December 2021	0.21	0.30	0.34	0.30	0.21	0.10	0.03	0.01	0.02	0.04	0.05	0.02	-0.02	-0.07	-0.12	-0.16
Net Migration																
FDEC, March 2021	17.2	14.1	14.3	17.2	23.1	29.3	33.7	35.8	35.7	35.3	36.3	39.1	43.5	48.5	53.4	57.8
FDEC, December 2021	22.9	24.7	26.8	28.9	31.9	34.7	36.8	38.3	39.0	39.8	41.2	43.5	46.5	49.9	53.2	56.3
Net Domestic Migration																
FDEC, March 2021	-3.2	-6.5	-6.4	-3.1	2.2	7.6	10.7	10.4	8.7	6.6	5.9	6.2	9.0	12.8	16.6	20.4
FDEC, December 2021	3.9	5.5	7.4	9.5	12.2	14.2	16.0	17.6	18.9	19.5	20.5	22.0	23.9	26.1	28.4	30.5
Net International Migration																
FDEC, March 2021	20.5	20.6	20.8	20.3	20.8	21.7	23.0	25.4	27.1	28.8	30.5	33.0	34.5	35.8	36.8	37.4
FDEC, December 2021	19.0	19.2	19.4	19.4	19.7	20.5	20.9	20.7	20.1	20.2	20.6	21.5	22.7	23.8	24.9	25.7
Births																
FDEC, March 2021	53.7	53.5	53.3	53.4	53.3	53.3	53.2	53.2	53.2	53.3	53.4	53.5	53.7	53.9	54.1	54.5
FDEC, December 2021	53.7	53.5	53.3	53.4	53.3	53.3	53.2	53.2	53.2	53.3	53.4	53.5	53.7	53.9	54.1	54.5
Deaths																
FDEC, March 2021	43.1	43.2	43.2	43.1	43.1	43.3	43.4	43.6	43.8	44.1	44.3	44.6	44.9	45.1	45.4	45.7
FDEC, December 2021	43.1	43.2	43.2	43.1	43.1	43.3	43.4	43.6	43.8	44.1	44.3	44.6	44.9	45.1	45.4	45.7
Net Natural Increase																
FDEC, March 2021	10.6	10.3	10.0	10.3	10.2	10.0	9.9	9.5	9.3	9.2	9.0	8.9	8.8	8.8	8.7	8.8
FDEC, December 2021	10.6	10.3	10.0	10.3	10.2	10.0	9.9	9.5	9.3	9.2	9.0	8.9	8.8	8.8	8.7	8.8

QUARTERLY FORECAST TABLES

	<u>2014-2</u>	<u>2014-3</u>	<u>2014-4</u>	<u>2015-1</u>	<u>2015-2</u>	<u>2015-3</u>	<u>2015-4</u>	<u>2016-1</u>	<u>2016-2</u>	<u>2016-3</u>	<u>2016-4</u>	<u>2017-1</u>	<u>2017-2</u>	<u>2017-3</u>	<u>2017-4</u>	<u>2018-1</u>
Population																
FDEC, March 2021	19,543.7	19,618.1	19,695.4	19,774.9	19,856.1	19,938.5	20,021.9	20,106.3	20,191.4	20,276.6	20,361.0	20,443.5	20,523.3	20,611.4	20,705.4	20,795.5
FDEC, December 2021	19,619.9	19,690.9	19,764.6	19,840.6	19,918.8	19,998.6	20,079.5	20,160.8	20,241.9	20,322.7	20,403.3	20,484.3	20,565.8	20,647.9	20,730.5	20,813.4
Population Growth Rate																
FDEC, March 2021	1.46	1.53	1.59	1.63	1.65	1.67	1.68	1.70	1.70	1.70	1.68	1.63	1.57	1.73	1.84	1.75
FDEC, December 2021	1.40	1.46	1.50	1.55	1.59	1.61	1.63	1.63	1.62	1.61	1.60	1.60	1.60	1.61	1.61	1.61
Net Change in Population																
FDEC, March 2021	70.7	74.4	77.3	79.6	81.2	82.4	83.4	84.4	85.1	85.3	84.4	82.5	79.8	88.2	94.0	90.0
FDEC, December 2021	68.2	71.0	73.7	76.0	78.2	79.8	80.9	81.3	81.1	80.8	80.7	80.9	81.5	82.1	82.6	82.9
Households																
FDEC, March 2021	7,724.2	7,756.2	7,789.4	7,823.5	7,858.2	7,893.4	7,928.9	7,964.9	8,001.2	8,037.6	8,073.4	8,108.2	8,141.3	8,177.3	8,215.5	8,252.5
FDEC, December 2021	7,724.2	7,756.1	7,789.3	7,823.5	7,858.3	7,893.6	7,929.2	7,965.0	8,000.9	8,036.6	8,072.2	8,107.6	8,142.7	8,177.8	8,213.9	8,251.6
Household Growth Rate																
FDEC, March 2021	1.59	1.67	1.72	1.76	1.79	1.80	1.81	1.83	1.84	1.83	1.80	1.73	1.64	1.78	1.88	1.81
FDEC, December 2021	1.59	1.67	1.72	1.77	1.79	1.81	1.82	1.82	1.81	1.80	1.78	1.76	1.74	1.74	1.77	1.85
Net Change in Households																
FDEC, March 2021	30.4	32.0	33.2	34.1	34.7	35.1	35.5	36.0	36.3	36.4	35.9	34.7	33.1	36.0	38.2	36.9
FDEC, December 2021	30.4	32.0	33.2	34.2	34.8	35.3	35.6	35.8	35.8	35.8	35.6	35.3	35.1	35.2	36.0	37.8
Household Size																
FDEC, March 2021	2.530	2.529	2.528	2.528	2.527	2.526	2.525	2.524	2.524	2.523	2.522	2.521	2.521	2.521	2.520	2.520
FDEC, December 2021	2.540	2.539	2.537	2.536	2.535	2.534	2.532	2.531	2.530	2.529	2.528	2.527	2.526	2.525	2.524	2.522
Household Size Growth Rate																
FDEC, March 2021	-0.13	-0.13	-0.14	-0.14	-0.13	-0.13	-0.13	-0.13	-0.13	-0.13	-0.12	-0.10	-0.07	-0.05	-0.05	-0.06
FDEC, December 2021	-0.19	-0.21	-0.22	-0.21	-0.20	-0.19	-0.19	-0.19	-0.19	-0.19	-0.18	-0.16	-0.14	-0.13	-0.16	-0.24
Net Migration																
FDEC, March 2021	62.0	65.7	68.7	71.1	72.8	74.3	75.6	76.8	77.9	78.5	78.1	76.9	74.6	83.3	89.4	85.7
FDEC, December 2021	59.4	62.3	65.1	67.5	69.8	71.7	73.0	73.8	73.9	74.0	74.4	75.3	76.3	77.3	78.1	78.6
Net Domestic Migration																
FDEC, March 2021	24.0	27.2	29.9	33.4	34.6	35.0	35.0	31.6	31.8	32.1	32.2	35.0	33.7	43.1	49.6	43.7
FDEC, December 2021	32.8	35.0	37.1	39.1	41.1	42.1	42.8	43.1	43.1	42.0	41.2	40.6	40.0	40.0	39.8	39.4
Net International Migration																
FDEC, March 2021	38.0	38.5	38.8	37.7	38.3	39.2	40.6	45.2	46.2	46.4	45.9	41.9	40.9	40.2	39.9	42.0
FDEC, December 2021	26.6	27.3	27.9	28.4	28.8	29.6	30.3	30.7	30.9	31.9	33.2	34.7	36.2	37.3	38.3	39.1
Births																
FDEC, March 2021	54.8	55.1	55.4	55.8	56.0	56.2	56.3	56.3	56.3	56.3	56.2	56.1	56.0	55.8	55.7	55.5
FDEC, December 2021	54.8	55.1	55.4	55.8	56.0	56.2	56.3	56.3	56.3	56.3	56.2	56.1	56.0	55.8	55.7	55.5
Deaths																
FDEC, March 2021	46.1	46.4	46.8	47.3	47.7	48.1	48.4	48.8	49.1	49.5	49.9	50.4	50.7	51.0	51.2	51.2
FDEC, December 2021	46.1	46.4	46.8	47.3	47.7	48.1	48.4	48.8	49.1	49.5	49.9	50.4	50.7	51.0	51.2	51.2
Net Natural Increase																
FDEC, March 2021	8.8	8.7	8.6	8.5	8.3	8.1	7.8	7.5	7.2	6.8	6.3	5.6	5.2	4.8	4.5	4.4
FDEC, December 2021	8.8	8.7	8.6	8.5	8.3	8.1	7.8	7.5	7.2	6.8	6.3	5.6	5.2	4.8	4.5	4.4

QUARTERLY FORECAST TABLES

	<u>2018-2</u>	<u>2018-3</u>	<u>2018-4</u>	<u>2019-1</u>	<u>2019-2</u>	<u>2019-3</u>	<u>2019-4</u>	<u>2020-1</u>	<u>2020-2</u>	<u>2020-3</u>	<u>2020-4</u>	<u>2021-1</u>	<u>2021-2</u>	<u>2021-3</u>	<u>2021-4</u>	<u>2022-1</u>
Population																
FDEC, March 2021	20,885.6	20,976.0	21,067.5	21,161.1	21,257.5	21,355.9	21,454.0	21,549.4	21,639.8	21,724.9	21,806.3	21,886.0	21,965.6	22,045.6	22,125.9	22,205.8
FDEC, December 2021	20,896.5	20,979.7	21,063.3	21,147.6	21,232.6	21,318.7	21,405.7	21,493.9	21,583.0	21,673.0	21,763.5	21,853.8	21,943.7	22,032.6	22,119.9	22,205.3
Population Growth Rate																
FDEC, March 2021	1.75	1.74	1.76	1.79	1.83	1.86	1.85	1.79	1.69	1.58	1.51	1.47	1.46	1.47	1.46	1.45
FDEC, December 2021	1.61	1.60	1.60	1.61	1.62	1.63	1.64	1.66	1.67	1.68	1.68	1.67	1.65	1.63	1.60	1.55
Net Change in Population																
FDEC, March 2021	90.1	90.4	91.5	93.6	96.4	98.4	98.1	95.4	90.4	85.1	81.4	79.7	79.5	80.1	80.3	79.9
FDEC, December 2021	83.1	83.2	83.6	84.2	85.1	86.0	87.1	88.1	89.2	90.0	90.4	90.4	89.9	88.9	87.4	85.4
Households																
FDEC, March 2021	8,290.0	8,328.3	8,367.4	8,407.4	8,448.4	8,489.9	8,530.7	8,570.0	8,606.7	8,640.8	8,673.5	8,705.7	8,738.5	8,772.2	8,806.5	8,840.9
FDEC, December 2021	8,291.7	8,333.1	8,373.6	8,410.5	8,441.6	8,467.5	8,491.0	8,515.9	8,545.1	8,579.3	8,617.2	8,656.5	8,695.5	8,733.2	8,769.8	8,805.3
Household Growth Rate																
FDEC, March 2021	1.83	1.86	1.89	1.93	1.96	1.98	1.94	1.85	1.72	1.60	1.52	1.49	1.52	1.55	1.57	1.57
FDEC, December 2021	1.96	2.01	1.96	1.77	1.49	1.23	1.12	1.18	1.38	1.61	1.77	1.84	1.81	1.75	1.68	1.63
Net Change in Households																
FDEC, March 2021	37.5	38.3	39.1	40.0	41.0	41.4	40.9	39.2	36.7	34.2	32.6	32.2	32.8	33.7	34.3	34.3
FDEC, December 2021	40.1	41.4	40.5	36.9	31.1	25.8	23.6	24.8	29.2	34.3	37.8	39.3	39.0	37.8	36.6	35.5
Household Size																
FDEC, March 2021	2.519	2.519	2.518	2.517	2.516	2.515	2.515	2.515	2.514	2.514	2.514	2.514	2.514	2.513	2.512	2.512
FDEC, December 2021	2.520	2.518	2.515	2.514	2.515	2.518	2.521	2.524	2.526	2.526	2.526	2.525	2.524	2.523	2.522	2.522
Household Size Growth Rate																
FDEC, March 2021	-0.09	-0.11	-0.13	-0.14	-0.13	-0.11	-0.09	-0.06	-0.03	-0.01	-0.01	-0.02	-0.05	-0.09	-0.11	-0.11
FDEC, December 2021	-0.34	-0.40	-0.35	-0.16	0.13	0.40	0.52	0.48	0.29	0.06	-0.09	-0.16	-0.16	-0.12	-0.09	-0.08
Net Migration																
FDEC, March 2021	86.0	86.5	87.8	90.1	93.0	95.2	95.1	101.3	98.1	93.5	89.4	83.0	81.8	81.6	81.4	81.6
FDEC, December 2021	78.9	79.3	79.9	79.1	80.8	83.2	86.3	92.8	96.0	98.5	100.1	101.2	100.6	98.7	95.7	88.0
Net Domestic Migration																
FDEC, March 2021	44.6	46.2	49.3	56.5	61.2	64.5	65.0	80.2	83.4	77.2	71.6	64.2	61.9	61.4	61.1	61.1
FDEC, December 2021	39.0	40.9	42.8	44.1	46.7	51.1	56.1	65.0	81.6	88.7	87.6	86.0	80.5	78.0	74.6	67.3
Net International Migration																
FDEC, March 2021	41.4	40.3	38.6	33.6	31.9	30.7	30.1	21.1	14.7	16.3	17.8	18.7	19.9	20.2	20.3	20.5
FDEC, December 2021	39.9	38.5	37.1	35.1	34.1	32.1	30.2	27.9	14.4	9.9	12.5	15.2	20.1	20.7	21.0	20.7
Births																
FDEC, March 2021	55.4	55.3	55.2	55.1	55.0	55.0	55.0	52.9	52.4	52.1	52.0	52.3	52.4	52.5	52.7	53.2
FDEC, December 2021	55.4	55.3	55.2	55.5	55.3	54.9	54.4	52.6	52.3	52.2	52.5	54.3	54.7	55.0	55.2	54.8
Deaths																
FDEC, March 2021	51.3	51.4	51.5	51.6	51.7	51.8	52.0	58.9	60.1	60.5	60.0	55.6	54.6	54.0	53.8	54.8
FDEC, December 2021	51.3	51.4	51.5	50.4	51.0	52.0	53.6	57.3	59.1	60.8	62.2	65.1	65.4	64.9	63.5	57.4
Net Natural Increase																
FDEC, March 2021	4.1	3.9	3.7	3.5	3.3	3.2	3.0	-6.0	-7.7	-8.4	-8.0	-3.3	-2.2	-1.5	-1.1	-1.6
FDEC, December 2021	4.1	3.9	3.7	5.1	4.3	2.9	0.8	-4.7	-6.9	-8.5	-9.7	-10.8	-10.7	-9.9	-8.3	-2.6

QUARTERLY FORECAST TABLES

	<u>2022-2</u>	<u>2022-3</u>	<u>2022-4</u>	<u>2023-1</u>	<u>2023-2</u>	<u>2023-3</u>	<u>2023-4</u>	<u>2024-1</u>	<u>2024-2</u>	<u>2024-3</u>	<u>2024-4</u>	<u>2025-1</u>	<u>2025-2</u>	<u>2025-3</u>	<u>2025-4</u>	<u>2026-1</u>
Population																
FDEC, March 2021	22,285.0	22,363.3	22,440.6	22,517.1	22,592.9	22,667.9	22,742.1	22,815.7	22,888.6	22,960.8	23,032.4	23,103.4	23,173.7	23,243.8	23,313.3	23,382.2
FDEC, December 2021	22,288.3	22,369.0	22,447.9	22,525.7	22,603.0	22,679.9	22,756.4	22,832.3	22,907.4	22,981.6	23,055.0	23,127.8	23,200.0	23,271.6	23,342.7	23,413.2
Population Growth Rate																
FDEC, March 2021	1.43	1.41	1.39	1.37	1.35	1.33	1.32	1.30	1.28	1.27	1.25	1.24	1.22	1.21	1.20	1.19
FDEC, December 2021	1.50	1.46	1.42	1.39	1.38	1.37	1.36	1.34	1.32	1.30	1.28	1.27	1.25	1.24	1.23	1.21
Net Change in Population																
FDEC, March 2021	79.2	78.2	77.3	76.5	75.7	75.0	74.3	73.6	72.9	72.2	71.6	71.0	70.3	70.0	69.5	68.9
FDEC, December 2021	83.0	80.7	78.9	77.8	77.3	76.9	76.5	75.9	75.1	74.2	73.4	72.8	72.2	71.6	71.1	70.5
Households																
FDEC, March 2021	8,874.9	8,908.4	8,941.4	8,974.0	9,006.3	9,038.4	9,070.2	9,101.9	9,133.5	9,165.1	9,196.4	9,227.6	9,258.5	9,290.5	9,322.3	9,354.2
FDEC, December 2021	8,840.1	8,874.2	8,907.8	8,941.0	8,974.0	9,006.8	9,039.4	9,071.8	9,104.0	9,136.0	9,167.9	9,199.8	9,231.8	9,263.9	9,296.2	9,328.6
Household Growth Rate																
FDEC, March 2021	1.55	1.52	1.49	1.47	1.45	1.43	1.42	1.41	1.40	1.39	1.38	1.36	1.35	1.39	1.38	1.38
FDEC, December 2021	1.59	1.55	1.52	1.50	1.48	1.47	1.46	1.44	1.43	1.41	1.40	1.40	1.40	1.40	1.40	1.40
Net Change in Households																
FDEC, March 2021	34.0	33.5	33.0	32.6	32.3	32.1	31.9	31.7	31.6	31.5	31.4	31.2	30.9	32.0	31.8	31.9
FDEC, December 2021	34.7	34.1	33.6	33.2	33.0	32.8	32.6	32.4	32.2	32.0	31.9	31.9	32.0	32.1	32.3	32.4
Household Size																
FDEC, March 2021	2.511	2.510	2.510	2.509	2.509	2.508	2.507	2.507	2.506	2.505	2.504	2.504	2.503	2.502	2.501	2.500
FDEC, December 2021	2.521	2.521	2.520	2.519	2.519	2.518	2.517	2.517	2.516	2.515	2.515	2.514	2.513	2.512	2.511	2.510
Household Size Growth Rate																
FDEC, March 2021	-0.11	-0.10	-0.10	-0.10	-0.09	-0.10	-0.10	-0.10	-0.11	-0.12	-0.12	-0.12	-0.12	-0.17	-0.17	-0.19
FDEC, December 2021	-0.08	-0.09	-0.10	-0.11	-0.10	-0.10	-0.10	-0.10	-0.10	-0.11	-0.12	-0.13	-0.14	-0.16	-0.17	-0.19
Net Migration																
FDEC, March 2021	80.8	79.9	79.0	78.5	77.8	77.2	76.7	76.2	75.7	75.2	74.7	74.1	73.6	73.3	72.9	72.5
FDEC, December 2021	83.9	80.5	78.4	79.0	78.7	78.6	78.4	77.9	77.3	76.7	76.2	75.9	75.6	75.3	75.0	74.6
Net Domestic Migration																
FDEC, March 2021	60.0	58.7	57.4	56.4	55.1	53.7	52.8	52.0	51.7	51.5	51.2	50.8	50.5	50.3	50.1	49.9
FDEC, December 2021	63.3	60.0	57.6	57.9	57.5	56.7	55.7	54.6	53.4	52.6	51.8	51.1	50.5	49.7	48.9	48.1
Net International Migration																
FDEC, March 2021	20.8	21.1	21.6	22.1	22.8	23.5	23.9	24.2	24.0	23.7	23.5	23.3	23.1	22.9	22.8	22.6
FDEC, December 2021	20.6	20.5	20.8	21.1	21.2	21.9	22.7	23.3	23.9	24.2	24.5	24.8	25.2	25.6	26.1	26.5
Births																
FDEC, March 2021	53.4	53.6	53.8	53.9	54.1	54.2	54.4	54.5	54.7	54.8	55.0	55.1	55.3	55.6	56.0	56.3
FDEC, December 2021	54.9	54.9	55.0	55.1	55.2	55.2	55.3	55.3	55.4	55.5	55.6	55.6	55.8	56.0	56.2	56.6
Deaths																
FDEC, March 2021	55.0	55.3	55.5	55.9	56.2	56.5	56.8	57.2	57.5	57.8	58.1	58.3	58.6	58.9	59.4	59.9
FDEC, December 2021	55.8	54.8	54.4	56.3	56.6	56.9	57.2	57.4	57.7	58.0	58.4	58.8	59.2	59.7	60.2	60.7
Net Natural Increase																
FDEC, March 2021	-1.6	-1.6	-1.7	-1.9	-2.1	-2.3	-2.4	-2.7	-2.8	-3.0	-3.1	-3.1	-3.2	-3.2	-3.4	-3.6
FDEC, December 2021	-0.9	0.1	0.6	-1.2	-1.4	-1.7	-1.9	-2.0	-2.3	-2.5	-2.8	-3.2	-3.4	-3.7	-3.9	-4.1

QUARTERLY FORECAST TABLES

	<u>2026-2</u>	<u>2026-3</u>	<u>2026-4</u>	<u>2027-1</u>	<u>2027-2</u>	<u>2027-3</u>	<u>2027-4</u>	<u>2028-1</u>	<u>2028-2</u>	<u>2028-3</u>	<u>2028-4</u>	<u>2029-1</u>	<u>2029-2</u>	<u>2029-3</u>	<u>2029-4</u>	<u>2030-1</u>
Population																
FDEC, March 2021	23,450.4	23,517.9	23,584.7	23,650.7	23,715.9	23,780.3	23,844.1	23,907.2	23,969.7	24,031.7	24,093.0	24,153.8	24,213.9	24,273.3	24,332.1	24,390.2
FDEC, December 2021	23,482.9	23,551.8	23,620.0	23,687.4	23,754.2	23,820.2	23,885.6	23,950.2	24,014.1	24,077.3	24,139.9	24,201.7	24,262.7	24,323.1	24,382.8	24,441.8
Population Growth Rate																
FDEC, March 2021	1.17	1.16	1.14	1.12	1.11	1.09	1.08	1.06	1.05	1.04	1.03	1.01	1.00	0.99	0.97	0.96
FDEC, December 2021	1.20	1.18	1.16	1.15	1.13	1.12	1.10	1.09	1.07	1.06	1.04	1.03	1.01	1.00	0.99	0.97
Net Change in Population																
FDEC, March 2021	68.2	67.5	66.8	66.0	65.2	64.4	63.7	63.1	62.5	62.0	61.4	60.8	60.1	59.4	58.8	58.1
FDEC, December 2021	69.8	68.9	68.2	67.4	66.7	66.0	65.3	64.6	63.9	63.2	62.5	61.8	61.1	60.4	59.7	59.0
Households																
FDEC, March 2021	9,386.2	9,418.2	9,450.2	9,482.3	9,514.2	9,546.1	9,577.9	9,609.7	9,641.4	9,673.1	9,704.8	9,736.4	9,767.9	9,799.4	9,830.8	9,862.1
FDEC, December 2021	9,360.8	9,392.8	9,424.6	9,456.2	9,487.6	9,518.9	9,550.0	9,581.0	9,611.8	9,642.4	9,672.7	9,702.9	9,732.8	9,762.6	9,792.0	9,821.3
Household Growth Rate																
FDEC, March 2021	1.37	1.37	1.37	1.36	1.35	1.35	1.34	1.33	1.33	1.32	1.32	1.31	1.30	1.30	1.29	1.28
FDEC, December 2021	1.39	1.37	1.36	1.35	1.34	1.33	1.31	1.30	1.29	1.28	1.27	1.25	1.24	1.23	1.21	1.20
Net Change in Households																
FDEC, March 2021	32.0	32.0	32.0	32.0	32.0	31.9	31.8	31.8	31.7	31.7	31.7	31.6	31.6	31.5	31.4	31.3
FDEC, December 2021	32.3	31.9	31.8	31.6	31.4	31.3	31.1	31.0	30.8	30.6	30.4	30.2	29.9	29.7	29.5	29.2
Household Size																
FDEC, March 2021	2.498	2.497	2.496	2.494	2.493	2.491	2.489	2.488	2.486	2.484	2.483	2.481	2.479	2.477	2.475	2.473
FDEC, December 2021	2.509	2.507	2.506	2.505	2.504	2.502	2.501	2.500	2.498	2.497	2.496	2.494	2.493	2.491	2.490	2.489
Household Size Growth Rate																
FDEC, March 2021	-0.20	-0.21	-0.22	-0.23	-0.24	-0.25	-0.26	-0.27	-0.27	-0.28	-0.29	-0.29	-0.30	-0.31	-0.31	-0.32
FDEC, December 2021	-0.19	-0.19	-0.19	-0.20	-0.20	-0.21	-0.21	-0.21	-0.22	-0.22	-0.22	-0.22	-0.22	-0.22	-0.23	-0.23
Net Migration																
FDEC, March 2021	72.1	71.6	71.0	70.5	70.0	69.5	69.1	68.8	68.5	68.2	67.9	67.6	67.3	67.0	66.6	66.3
FDEC, December 2021	74.1	73.5	73.0	72.6	72.2	71.8	71.4	71.0	70.7	70.3	69.9	69.6	69.2	68.8	68.5	68.1
Net Domestic Migration																
FDEC, March 2021	49.6	49.2	48.9	48.5	48.1	47.8	47.4	47.2	47.0	46.8	46.6	46.4	46.1	45.8	45.6	45.3
FDEC, December 2021	47.2	46.3	45.5	44.7	44.0	43.2	42.6	41.8	41.2	40.6	40.0	39.5	38.9	38.4	38.0	37.5
Net International Migration																
FDEC, March 2021	22.5	22.3	22.2	22.0	21.9	21.8	21.7	21.6	21.5	21.4	21.3	21.2	21.2	21.1	21.1	21.0
FDEC, December 2021	26.8	27.2	27.5	27.9	28.2	28.6	28.9	29.2	29.5	29.7	29.9	30.1	30.3	30.4	30.5	30.6
Births																
FDEC, March 2021	56.5	56.8	57.0	57.3	57.5	57.8	58.0	58.2	58.5	58.7	58.9	59.1	59.3	59.5	59.6	59.8
FDEC, December 2021	56.9	57.1	57.4	57.6	57.8	58.0	58.2	58.4	58.6	58.8	58.9	59.1	59.2	59.4	59.5	59.6
Deaths																
FDEC, March 2021	60.3	60.8	61.3	61.8	62.3	62.9	63.4	63.9	64.4	64.9	65.5	66.0	66.5	67.0	67.5	68.0
FDEC, December 2021	61.2	61.7	62.2	62.8	63.3	63.8	64.3	64.8	65.3	65.8	66.3	66.8	67.3	67.8	68.3	68.8
Net Natural Increase																
FDEC, March 2021	-3.8	-4.0	-4.3	-4.5	-4.8	-5.1	-5.4	-5.7	-5.9	-6.3	-6.6	-6.9	-7.2	-7.5	-7.9	-8.2
FDEC, December 2021	-4.3	-4.6	-4.8	-5.1	-5.5	-5.8	-6.1	-6.4	-6.7	-7.1	-7.4	-7.8	-8.1	-8.5	-8.8	-9.1

QUARTERLY FORECAST TABLES

	<u>2030-2</u>	<u>2030-3</u>	<u>2030-4</u>	<u>2031-1</u>	<u>2031-2</u>
Population					
FDEC, March 2021	24,447.7	24,504.6	24,560.8	24,616.4	24,671.4
FDEC, December 2021	24,500.1	24,557.7	24,614.7	24,671.0	24,726.7
Population Growth Rate					
FDEC, March 2021	0.95	0.93	0.92	0.91	0.90
FDEC, December 2021	0.96	0.94	0.93	0.92	0.91
Net Change in Population					
FDEC, March 2021	57.5	56.9	56.2	55.6	55.0
FDEC, December 2021	58.3	57.6	57.0	56.3	55.7
Households					
FDEC, March 2021	9,893.3	9,924.3	9,955.2	9,986.0	10,016.5
FDEC, December 2021	9,850.3	9,879.0	9,907.5	9,935.9	9,964.0
Household Growth Rate					
FDEC, March 2021	1.27	1.26	1.25	1.24	1.23
FDEC, December 2021	1.19	1.17	1.16	1.15	1.14
Net Change in Households					
FDEC, March 2021	31.2	31.0	30.9	30.7	30.6
FDEC, December 2021	29.0	28.8	28.5	28.3	28.1
Household Size					
FDEC, March 2021	2.471	2.469	2.467	2.465	2.463
FDEC, December 2021	2.487	2.486	2.484	2.483	2.482
Household Size Growth Rate					
FDEC, March 2021	-0.32	-0.32	-0.33	-0.33	-0.33
FDEC, December 2021	-0.23	-0.23	-0.23	-0.23	-0.23
Net Migration					
FDEC, March 2021	66.1	65.8	65.6	65.3	65.2
FDEC, December 2021	67.8	67.4	67.1	66.9	66.7
Net Domestic Migration					
FDEC, March 2021	45.1	44.9	44.7	44.4	44.2
FDEC, December 2021	37.0	36.6	36.2	35.9	35.5
Net International Migration					
FDEC, March 2021	21.0	20.9	20.9	20.9	20.9
FDEC, December 2021	30.8	30.8	30.9	31.0	31.1
Births					
FDEC, March 2021	59.9	60.1	60.2	60.3	60.3
FDEC, December 2021	59.8	59.9	60.0	60.1	60.2
Deaths					
FDEC, March 2021	68.5	69.0	69.5	70.0	70.5
FDEC, December 2021	69.2	69.7	70.2	70.7	71.1
Net Natural Increase					
FDEC, March 2021	-8.6	-9.0	-9.3	-9.7	-10.2
FDEC, December 2021	-9.5	-9.8	-10.2	-10.6	-11.0

FISCAL YEAR
FORECAST TABLES

	<u>2000-01</u>	<u>2001-02</u>	<u>2002-03</u>	<u>2003-04</u>	<u>2004-05</u>	<u>2005-06</u>	<u>2006-07</u>	<u>2007-08</u>	<u>2008-09</u>	<u>2009-10</u>	<u>2010-11</u>	<u>2011-12</u>	<u>2012-13</u>	<u>2013-14</u>	<u>2014-15</u>
Population															
FDEC, March 2021	16,228.0	16,551.2	16,892.0	17,273.8	17,677.3	18,062.2	18,378.2	18,578.9	18,671.4	18,770.4	18,878.6	19,029.3	19,212.3	19,441.8	19,736.1
FDEC, December 2021	16,228.0	16,551.2	16,892.0	17,273.8	17,677.3	18,062.2	18,378.2	18,578.9	18,671.2	18,770.1	18,911.2	19,087.3	19,285.8	19,520.8	19,803.7
Growth Rate															
FDEC, March 2021	2.18	1.99	2.06	2.26	2.34	2.18	1.75	1.09	0.50	0.53	0.58	0.80	0.96	1.19	1.51
FDEC, December 2021	2.18	1.99	2.06	2.26	2.34	2.18	1.75	1.09	0.50	0.53	0.75	0.93	1.04	1.22	1.45
Net Change in Population															
FDEC, March 2021	346.4	323.2	340.9	381.8	403.5	384.9	316.0	200.7	92.5	99.0	108.2	150.7	183.0	229.5	294.3
FDEC, December 2021	346.4	323.2	340.9	381.8	403.5	384.9	316.0	200.7	92.3	98.9	141.1	176.1	198.5	234.9	283.0
Households															
FDEC, March 2021	6,431.9	6,554.7	6,685.7	6,833.2	6,990.5	7,142.1	7,266.1	7,341.9	7,374.2	7,410.1	7,447.5	7,506.8	7,582.7	7,680.4	7,806.8
FDEC, December 2021	6,431.9	6,554.7	6,685.7	6,833.2	6,990.5	7,142.1	7,266.1	7,341.9	7,374.2	7,410.1	7,447.5	7,506.8	7,582.7	7,680.4	7,806.8
Growth Rate															
FDEC, March 2021	2.14	1.91	2.00	2.21	2.30	2.17	1.74	1.04	0.44	0.49	0.50	0.80	1.01	1.29	1.65
FDEC, December 2021	2.14	1.91	2.00	2.21	2.30	2.17	1.74	1.04	0.44	0.49	0.50	0.80	1.01	1.29	1.65
Net Change in Households															
FDEC, March 2021	134.6	122.9	131.0	147.5	157.3	151.7	124.0	75.7	32.3	35.9	37.4	59.3	75.9	97.7	126.5
FDEC, December 2021	134.6	122.9	131.0	147.5	157.3	151.7	124.0	75.7	32.3	35.9	37.4	59.3	75.9	97.7	126.4
Household Size															
FDEC, March 2021	2.523	2.525	2.527	2.528	2.529	2.529	2.529	2.531	2.532	2.533	2.535	2.535	2.534	2.531	2.528
FDEC, December 2021	2.523	2.525	2.527	2.528	2.529	2.529	2.529	2.531	2.532	2.533	2.539	2.543	2.543	2.542	2.537
Growth Rate															
FDEC, March 2021	0.04	0.08	0.06	0.05	0.03	0.01	0.01	0.05	0.06	0.04	0.07	0.00	-0.05	-0.09	-0.13
FDEC, December 2021	0.04	0.08	0.06	0.05	0.03	0.01	0.01	0.05	0.06	0.04	0.25	0.13	0.03	-0.07	-0.19
Net Migration															
FDEC, March 2021	306.0	285.5	300.4	335.0	351.1	322.9	245.0	133.7	36.3	52.7	67.4	112.0	147.0	194.4	260.2
FDEC, December 2021	306.0	285.5	300.4	335.0	351.1	322.9	245.0	133.7	36.1	52.6	100.3	137.3	162.5	199.9	248.9
Net Domestic Migration															
FDEC, March 2021	206.7	188.5	210.1	246.1	258.7	227.9	153.1	55.1	-39.7	-30.0	-15.0	14.7	20.3	46.5	106.9
FDEC, December 2021	181.9	177.0	199.2	236.3	262.1	226.3	135.9	57.6	8.1	-31.5	22.7	55.1	77.5	98.9	136.4
Net International Migration															
FDEC, March 2021	99.3	97.0	90.3	88.9	92.4	95.0	92.0	78.6	76.0	82.7	82.4	97.2	126.7	148.0	153.3
FDEC, December 2021	124.2	108.4	101.2	98.7	88.9	96.6	109.1	76.1	28.0	84.2	77.6	82.2	85.0	101.0	112.5
Births															
FDEC, March 2021	205.4	205.4	208.5	215.0	221.8	232.1	239.3	236.0	226.4	217.4	213.5	212.9	213.8	217.4	222.3
FDEC, December 2021	205.4	205.4	208.5	215.0	221.8	232.1	239.3	236.0	226.4	217.4	213.5	212.9	213.8	217.4	222.3
Deaths															
FDEC, March 2021	165.0	167.7	168.1	168.3	169.4	170.1	168.3	169.0	170.2	171.1	172.7	174.1	177.8	182.4	188.2
FDEC, December 2021	165.0	167.7	168.1	168.3	169.4	170.1	168.3	169.0	170.2	171.1	172.7	174.1	177.8	182.4	188.2
Net Natural Increase															
FDEC, March 2021	40.3	37.7	40.4	46.7	52.4	62.0	71.0	67.0	56.2	46.3	40.8	38.8	36.0	35.0	34.1
FDEC, December 2021	40.3	37.7	40.4	46.7	52.4	62.0	71.0	67.0	56.2	46.3	40.8	38.8	36.0	35.0	34.1

FISCAL YEAR
FORECAST TABLES

	<u>2015-16</u>	<u>2016-17</u>	<u>2017-18</u>	<u>2018-19</u>	<u>2019-20</u>	<u>2020-21</u>	<u>2021-22</u>	<u>2022-23</u>	<u>2023-24</u>	<u>2024-25</u>	<u>2025-26</u>	<u>2026-27</u>	<u>2027-28</u>	<u>2028-29</u>	<u>2029-30</u>	<u>2030-31</u>
Population																
FDEC, March 2021	20,064.5	20,401.1	20,749.5	21,115.6	21,499.8	21,845.7	22,165.6	22,478.5	22,778.6	23,067.6	23,347.4	23,617.3	23,875.3	24,123.1	24,360.8	24,588.3
FDEC, December 2021	20,120.2	20,444.0	20,772.1	21,105.8	21,450.3	21,808.5	22,161.5	22,486.4	22,794.0	23,091.1	23,377.6	23,653.4	23,917.5	24,170.4	24,412.0	24,642.5
Growth Rate																
FDEC, March 2021	1.66	1.68	1.71	1.76	1.82	1.61	1.46	1.41	1.33	1.27	1.21	1.16	1.09	1.04	0.99	0.93
FDEC, December 2021	1.60	1.61	1.60	1.61	1.63	1.67	1.62	1.47	1.37	1.30	1.24	1.18	1.12	1.06	1.00	0.94
Net Change in Population																
FDEC, March 2021	328.4	336.6	348.4	366.1	384.2	345.9	319.9	312.9	300.1	289.0	279.8	269.9	258.0	247.8	237.7	227.5
FDEC, December 2021	316.5	323.8	328.1	333.7	344.5	358.2	353.0	324.9	307.6	297.1	286.5	275.8	264.2	252.9	241.6	230.6
Households																
FDEC, March 2021	7,947.1	8,090.1	8,233.8	8,387.9	8,549.3	8,689.6	8,823.6	8,957.5	9,086.0	9,211.9	9,338.3	9,466.2	9,593.8	9,720.6	9,846.4	9,970.5
FDEC, December 2021	7,947.2	8,089.8	8,233.8	8,389.7	8,504.9	8,637.1	8,787.1	8,924.3	9,055.5	9,183.9	9,312.4	9,440.3	9,565.4	9,687.7	9,806.5	9,921.6
Growth Rate																
FDEC, March 2021	1.80	1.80	1.78	1.87	1.92	1.64	1.54	1.52	1.43	1.39	1.37	1.37	1.35	1.32	1.29	1.26
FDEC, December 2021	1.80	1.79	1.78	1.89	1.37	1.55	1.74	1.56	1.47	1.42	1.40	1.37	1.33	1.28	1.23	1.17
Net Change in Households																
FDEC, March 2021	140.2	143.0	143.7	154.0	161.4	140.3	134.0	133.9	128.5	125.9	126.4	128.0	127.5	126.8	125.8	124.1
FDEC, December 2021	140.4	142.6	144.0	156.0	115.2	132.2	150.0	137.1	131.3	128.3	128.5	127.9	125.2	122.3	118.8	115.1
Household Size																
FDEC, March 2021	2.525	2.522	2.520	2.517	2.515	2.514	2.512	2.509	2.507	2.504	2.500	2.495	2.489	2.482	2.474	2.466
FDEC, December 2021	2.532	2.527	2.523	2.516	2.522	2.525	2.522	2.520	2.517	2.514	2.510	2.506	2.500	2.495	2.489	2.484
Growth Rate																
FDEC, March 2021	-0.13	-0.12	-0.07	-0.10	-0.10	-0.03	-0.08	-0.10	-0.10	-0.12	-0.16	-0.21	-0.25	-0.28	-0.31	-0.32
FDEC, December 2021	-0.20	-0.18	-0.17	-0.28	0.26	0.11	-0.12	-0.09	-0.10	-0.11	-0.16	-0.19	-0.21	-0.22	-0.22	-0.23
Net Migration																
FDEC, March 2021	297.7	312.7	330.5	351.6	391.7	367.8	325.7	320.2	310.3	301.5	293.9	287.5	280.1	274.7	269.9	265.7
FDEC, December 2021	285.8	299.9	310.2	316.8	352.4	397.9	374.7	326.8	315.5	309.0	302.5	295.7	289.1	283.2	277.4	272.1
Net Domestic Migration																
FDEC, March 2021	126.5	137.7	167.0	207.4	295.1	295.1	244.0	232.6	214.6	207.8	203.1	199.1	193.6	189.6	185.8	182.0
FDEC, December 2021	164.4	163.8	155.6	172.0	247.8	340.2	291.7	243.2	223.6	210.4	197.5	185.0	173.0	163.3	155.1	148.2
Net International Migration																
FDEC, March 2021	171.2	175.0	163.5	144.3	96.6	72.7	81.7	87.6	95.7	93.7	90.8	88.4	86.5	85.1	84.1	83.7
FDEC, December 2021	121.5	136.1	154.7	144.8	104.6	57.7	83.0	83.6	91.9	98.6	105.0	110.7	116.1	119.9	122.3	123.9
Births																
FDEC, March 2021	225.0	224.5	222.5	220.6	215.3	208.7	211.9	215.4	217.8	220.2	224.4	228.6	232.4	236.0	238.9	240.8
FDEC, December 2021	225.0	224.5	222.5	221.3	214.1	213.8	219.9	220.2	221.3	222.5	225.7	230.0	233.2	236.0	238.2	240.1
Deaths																
FDEC, March 2021	194.4	200.5	204.7	206.2	222.8	230.6	217.7	222.8	227.9	232.7	238.4	246.3	254.5	262.9	271.1	279.0
FDEC, December 2021	194.4	200.5	204.7	204.3	222.0	253.5	241.6	222.1	229.1	234.5	241.7	249.9	258.2	266.3	274.1	281.7
Net Natural Increase																
FDEC, March 2021	30.6	24.0	17.8	14.4	-7.5	-21.9	-5.8	-7.4	-10.2	-12.5	-14.1	-17.7	-22.1	-26.9	-32.2	-38.2
FDEC, December 2021	30.6	24.0	17.8	16.9	-7.9	-39.7	-21.7	-2.0	-7.9	-12.0	-16.0	-20.0	-25.0	-30.3	-35.8	-41.6

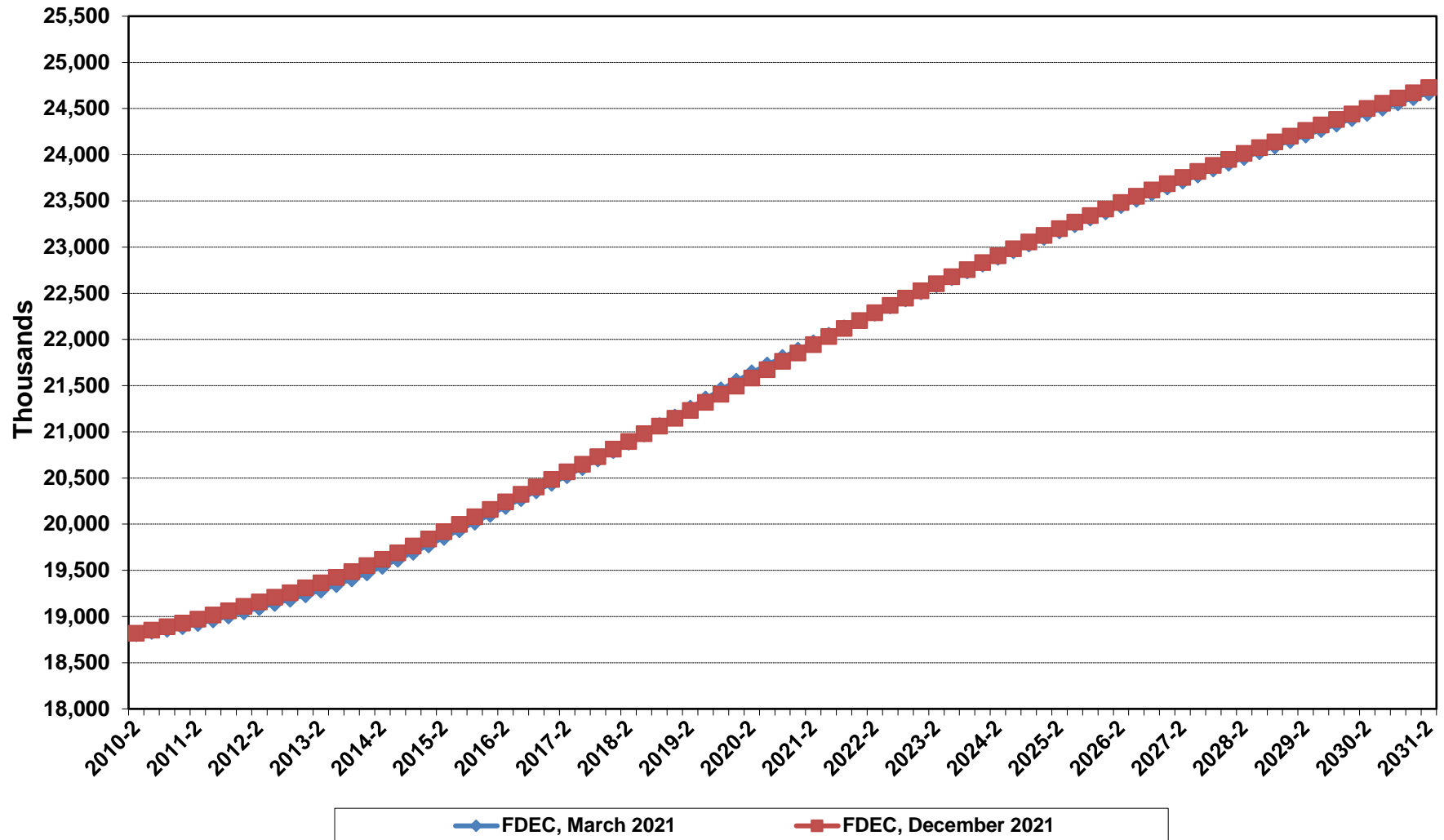
Florida Demographic Estimating Conference

Charts

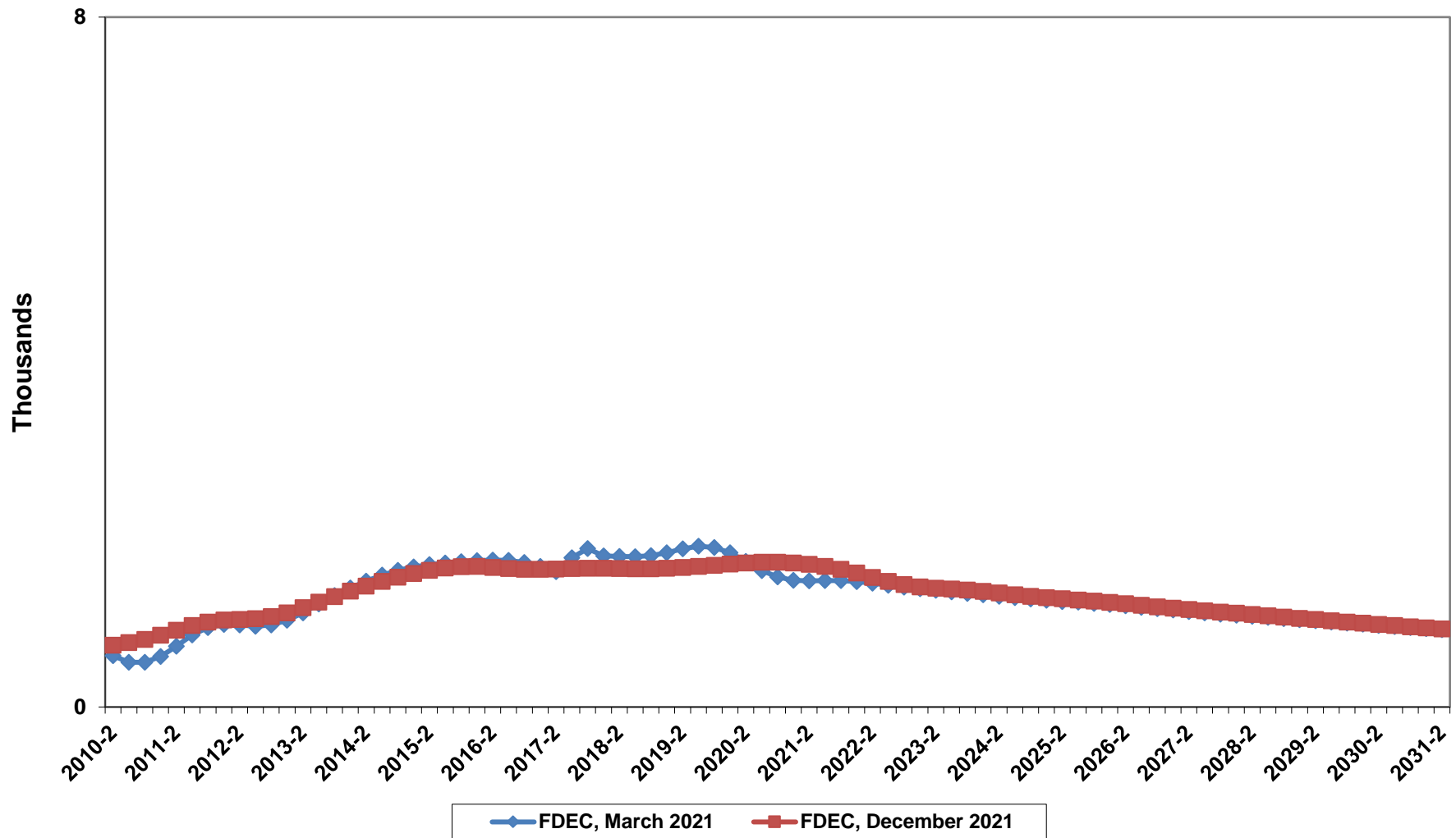
Conference Packet

December 13, 2021

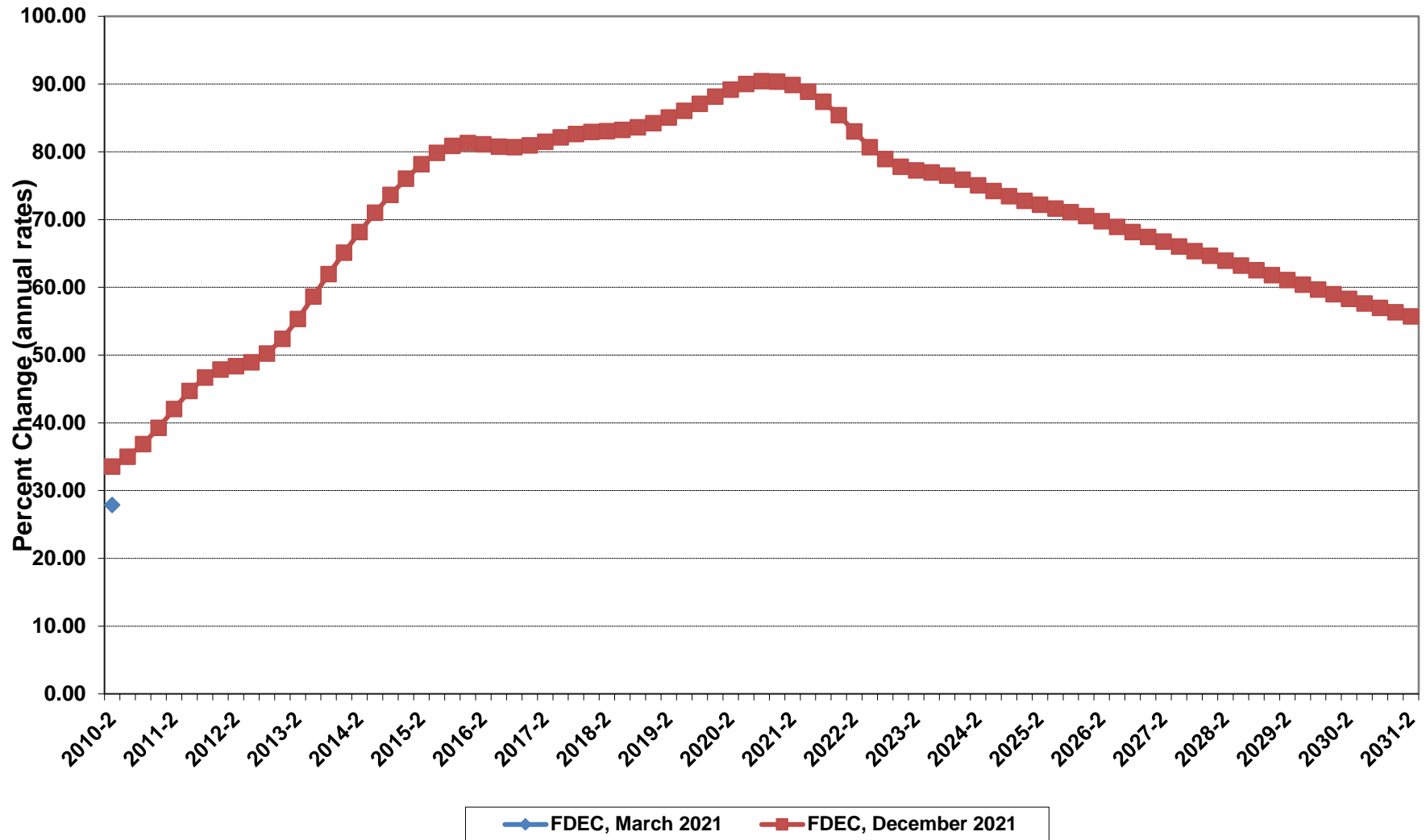
Florida Resident Population



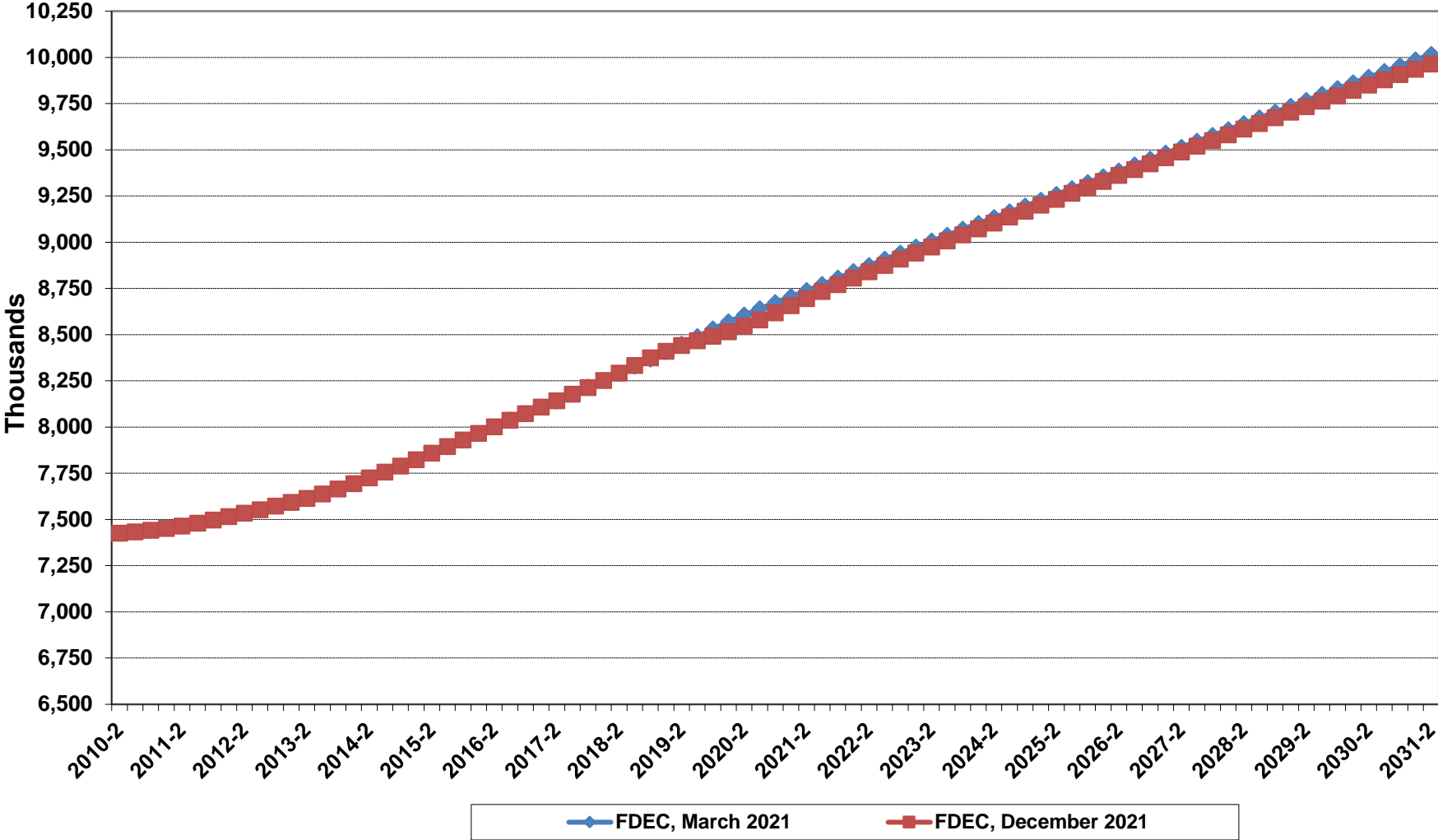
Net Change In Florida Resident Population



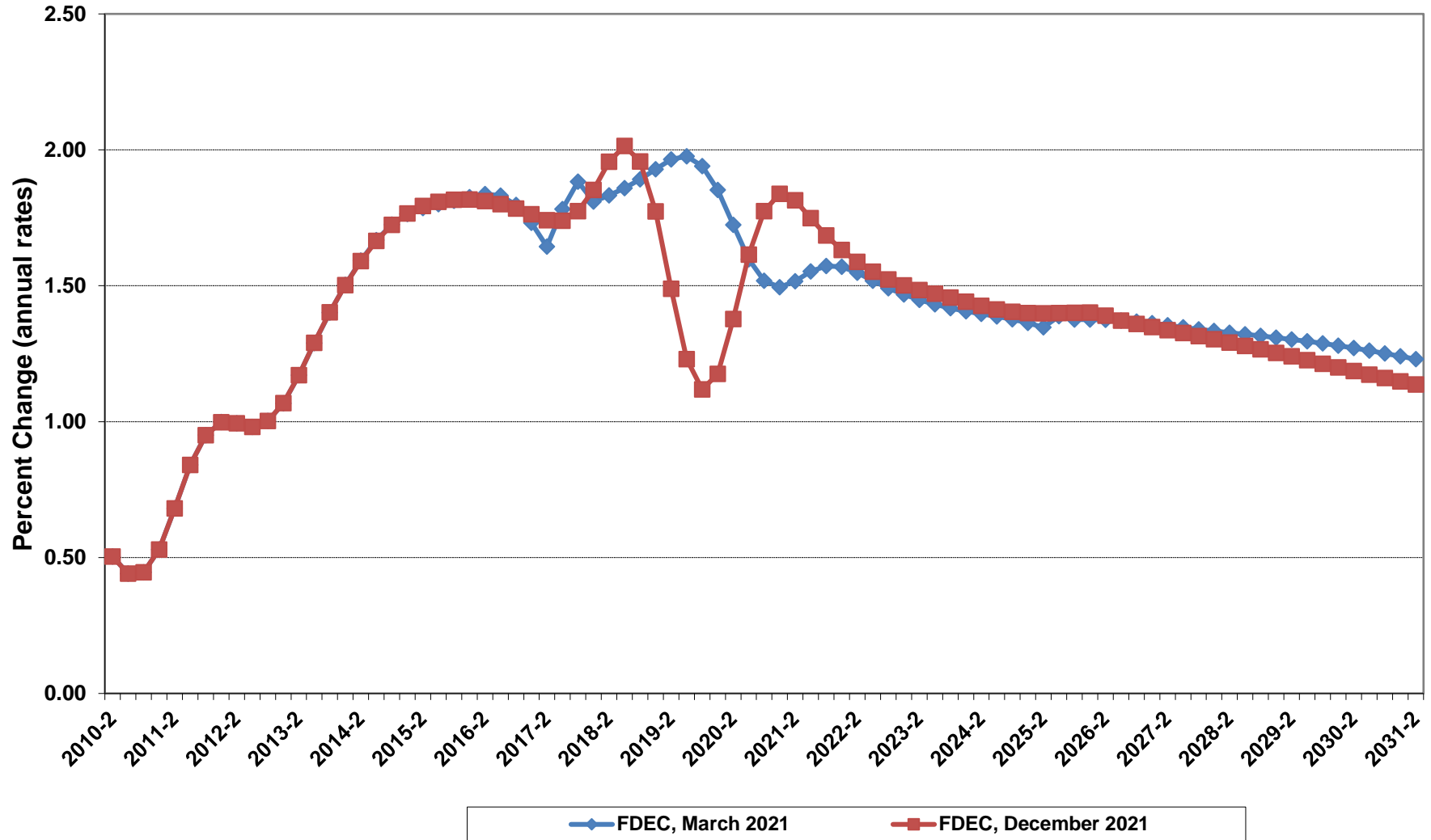
Growth In Florida Resident Population



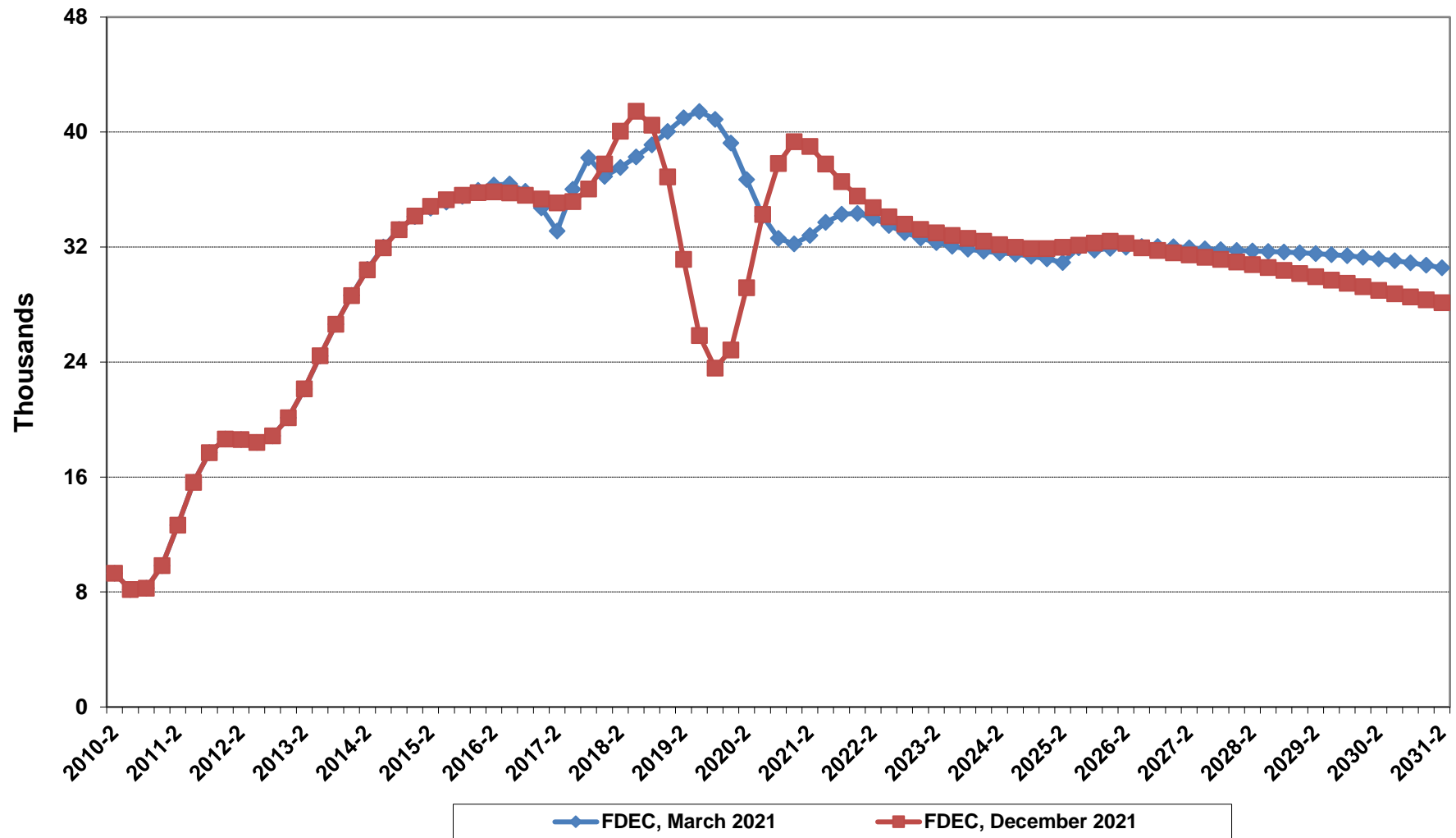
Florida Resident Households



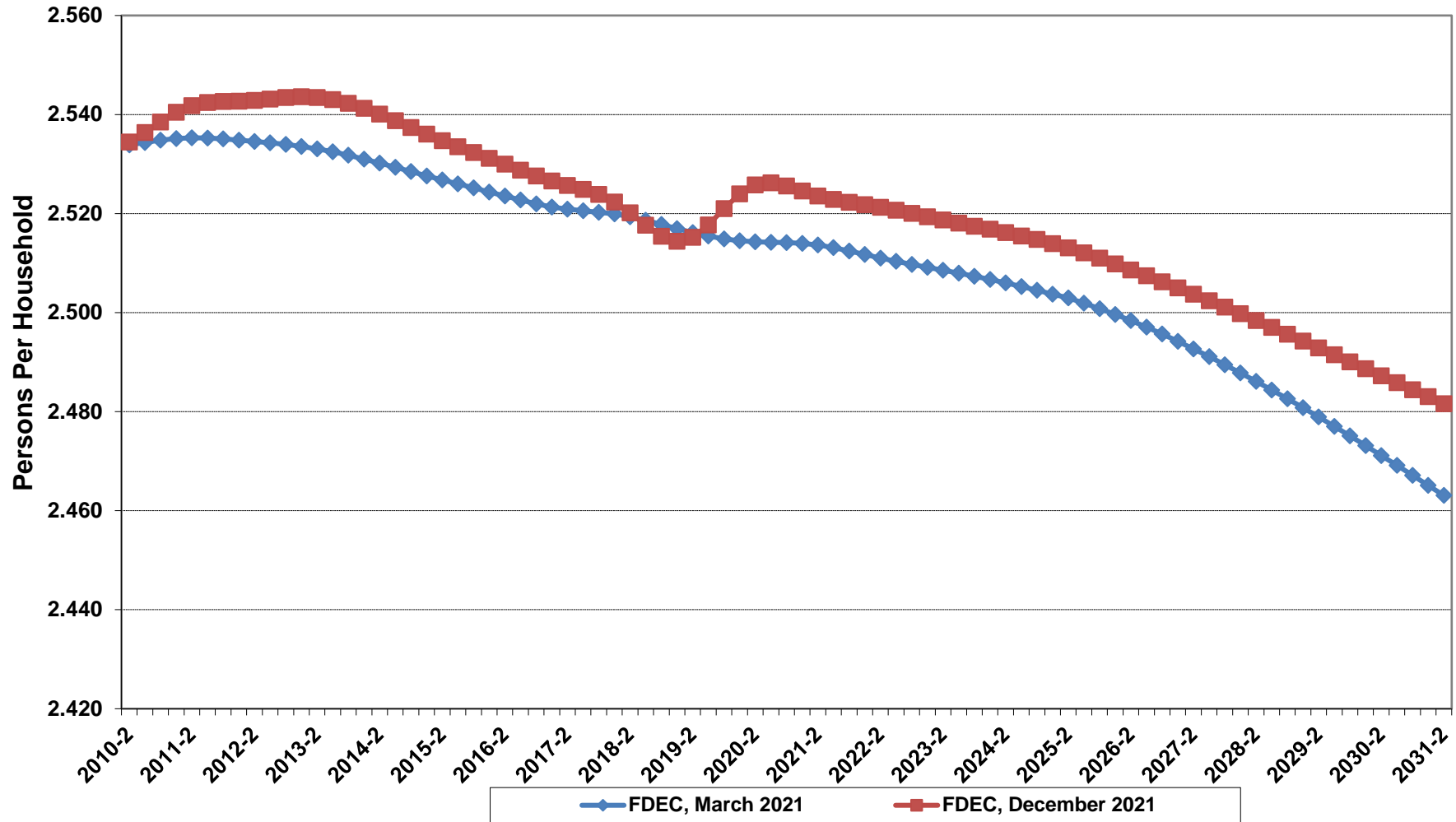
Growth In Florida Resident Households



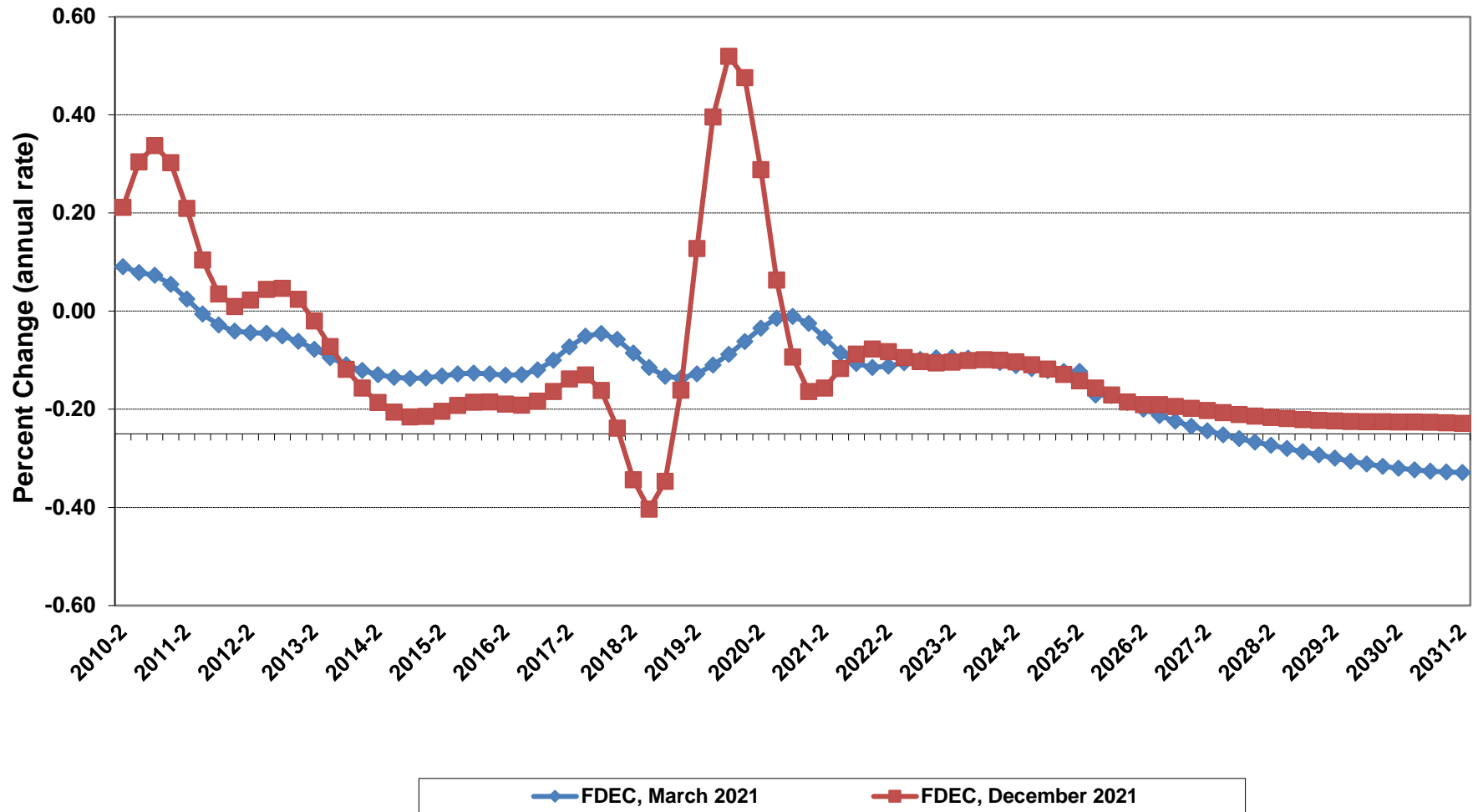
Net Change In Florida Resident Households



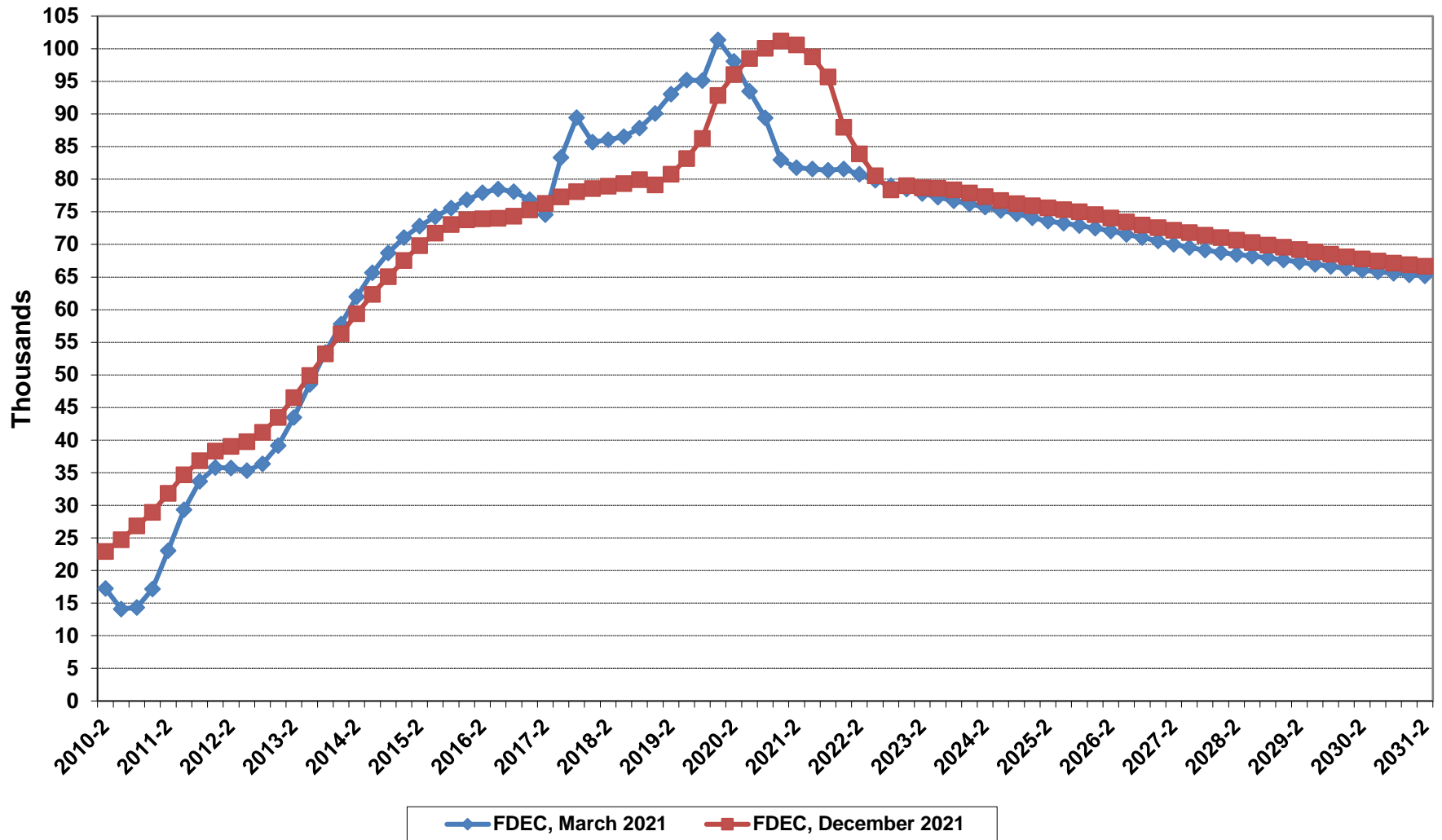
Florida Average Household Size



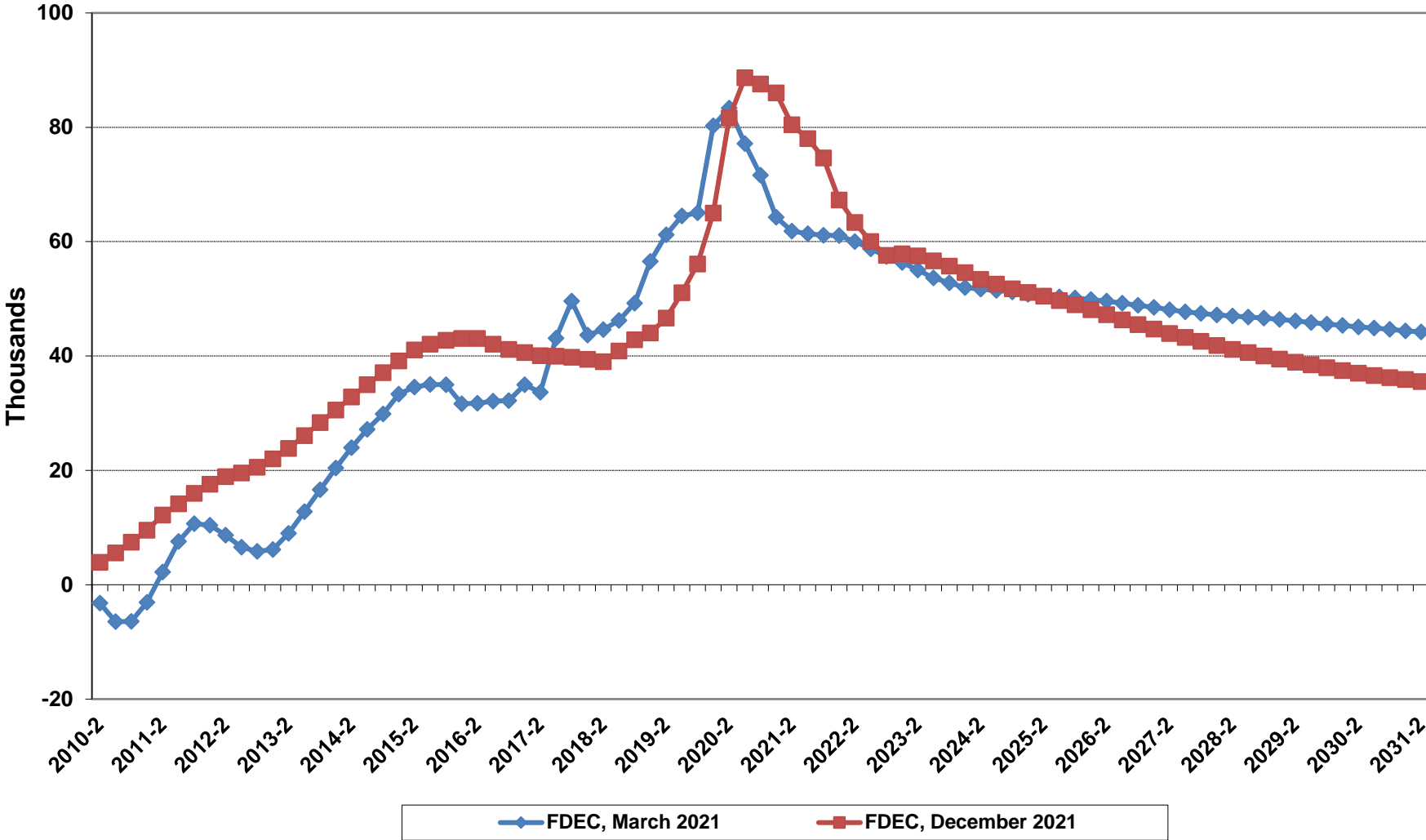
Growth In Florida Household Size



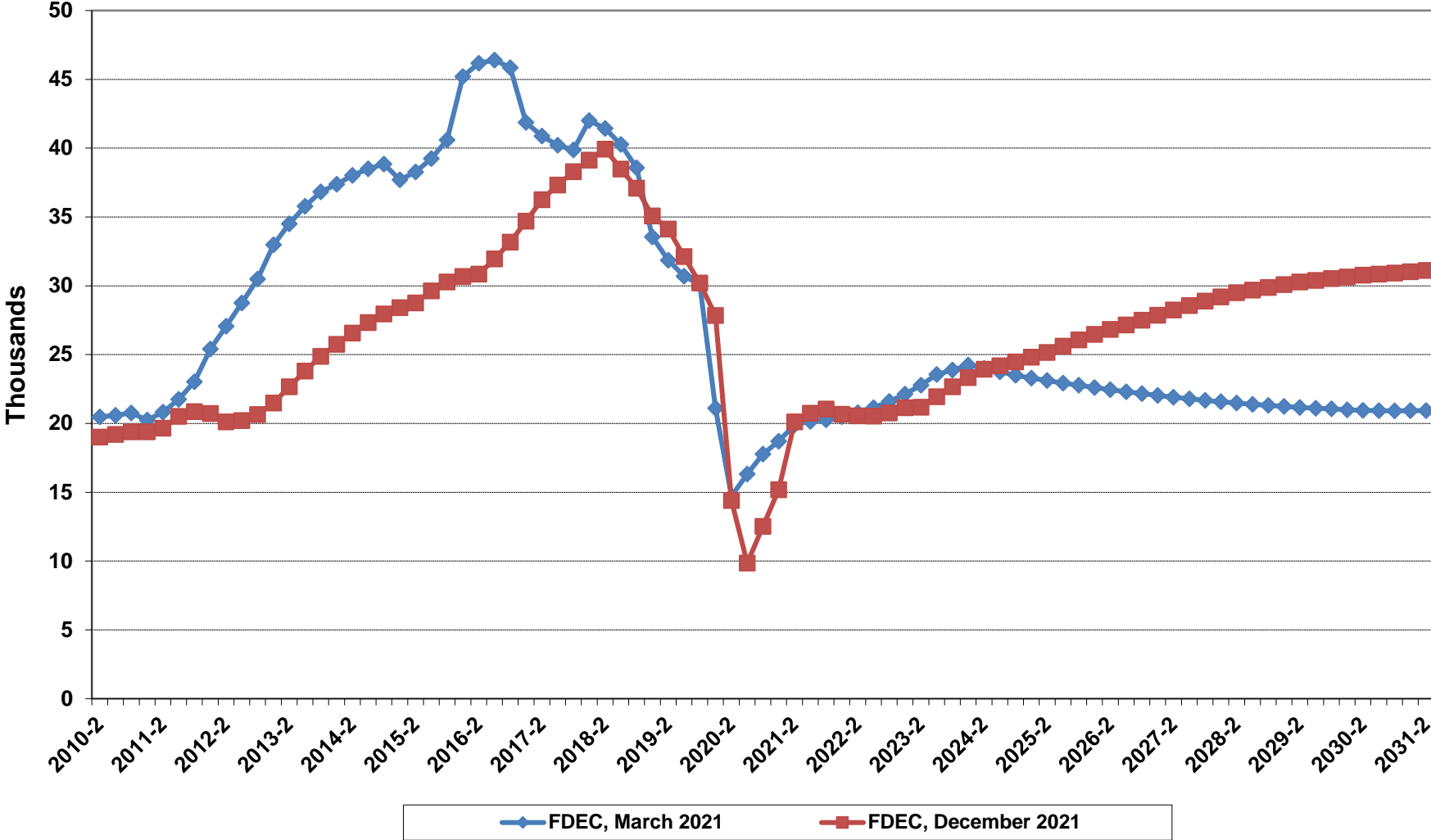
Florida Net Migration



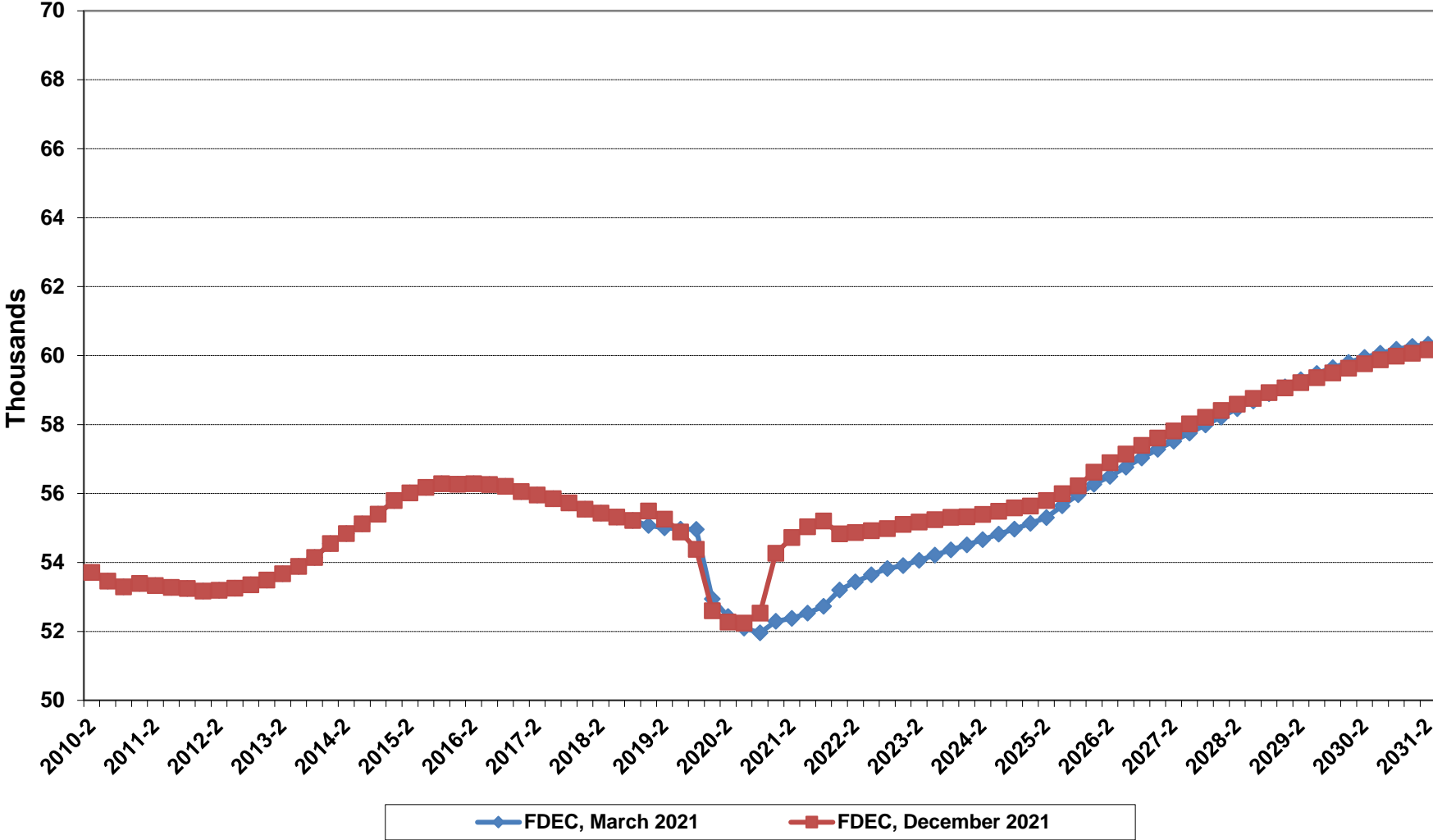
Florida Net Domestic Migration



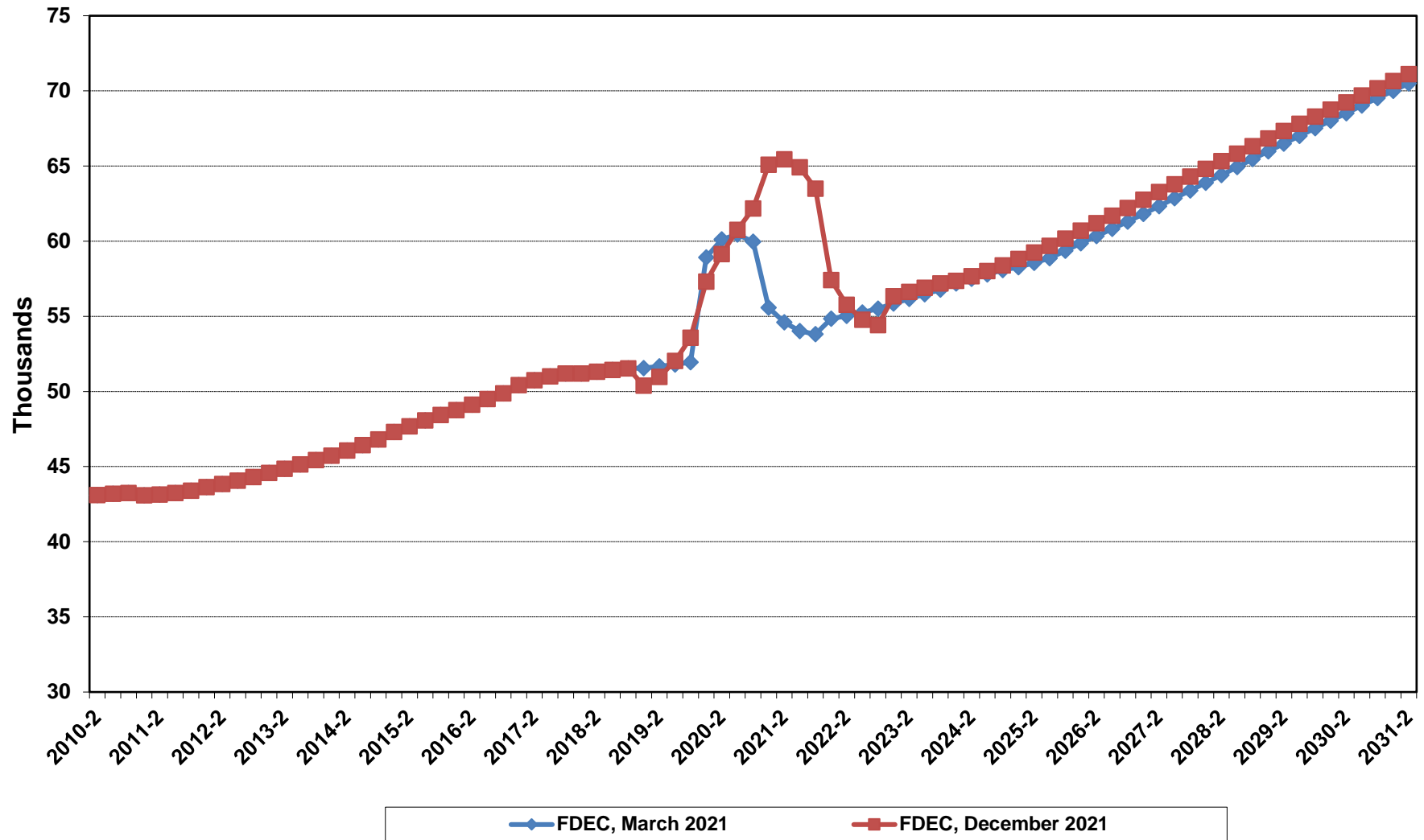
Florida Net International Migration



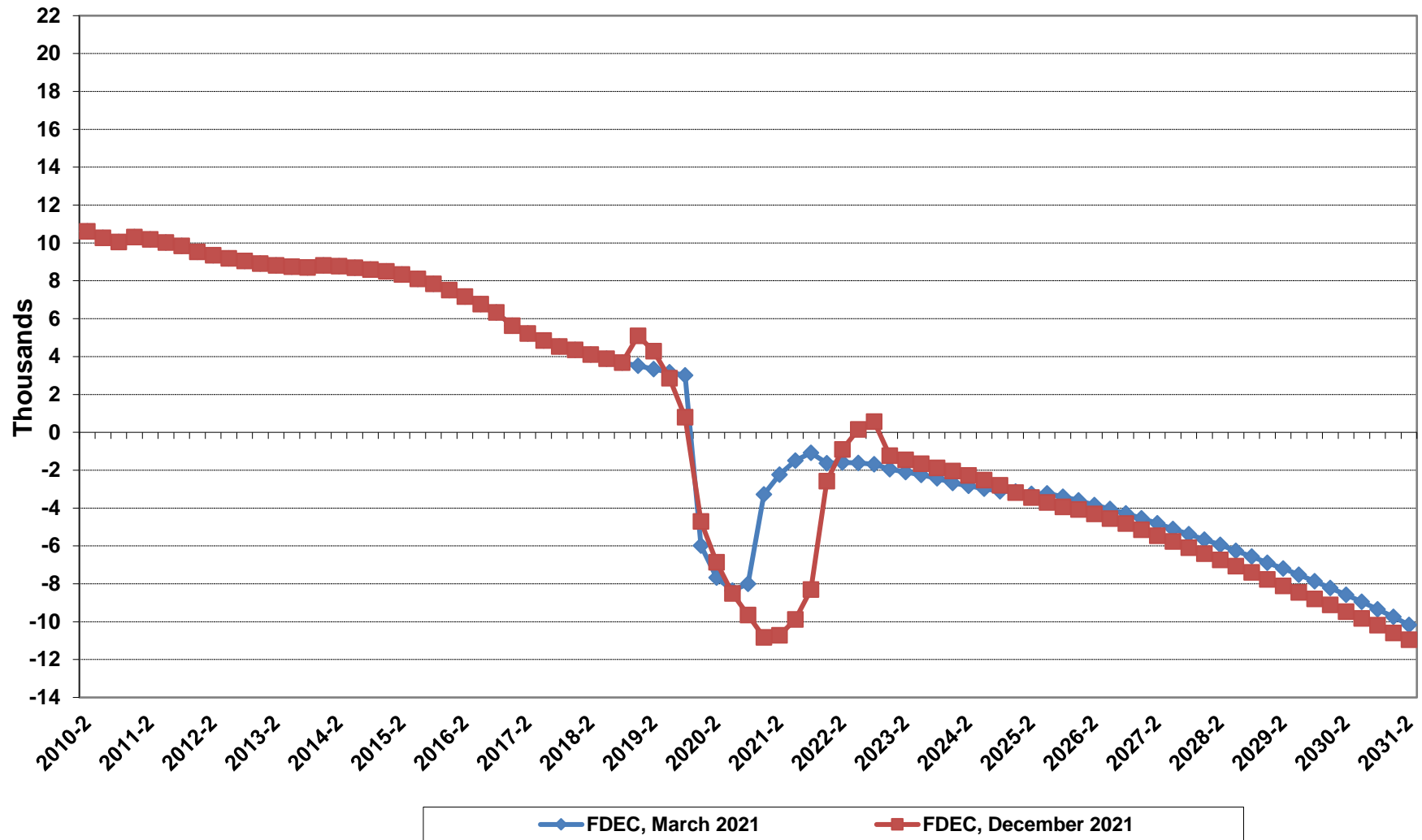
Florida Resident Births



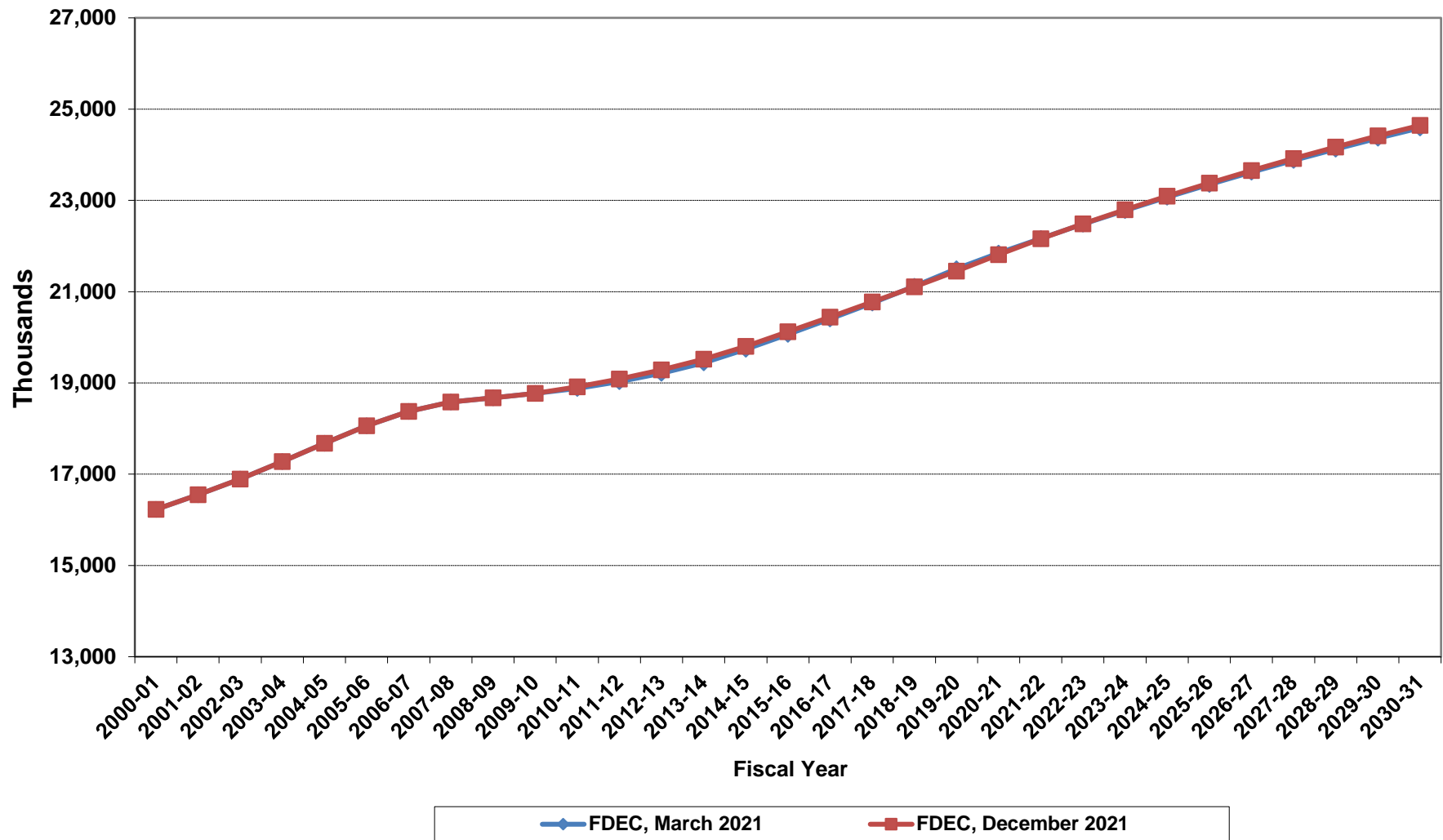
Florida Resident Deaths



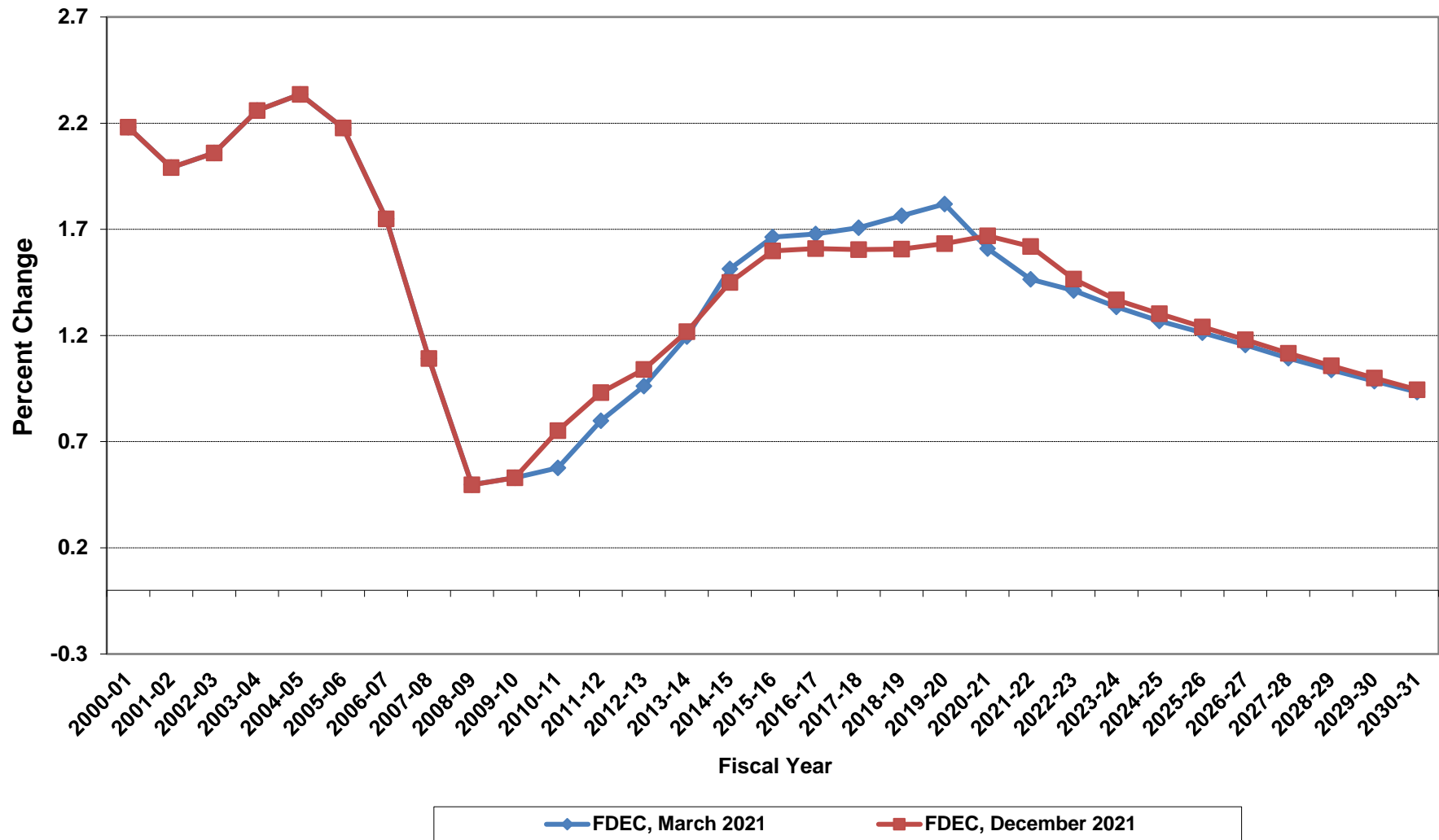
Florida Net Natural Increase



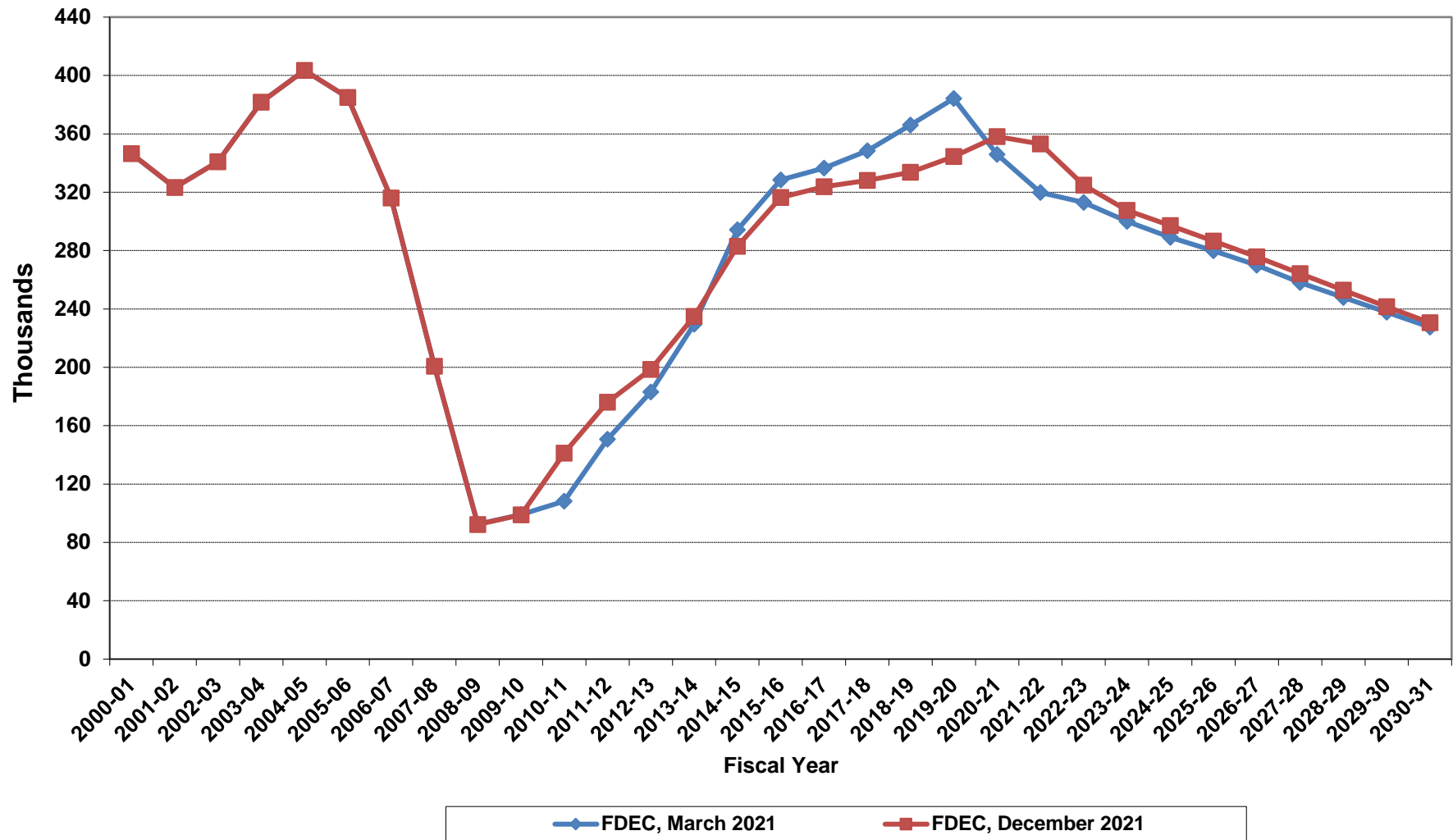
Florida Resident Population



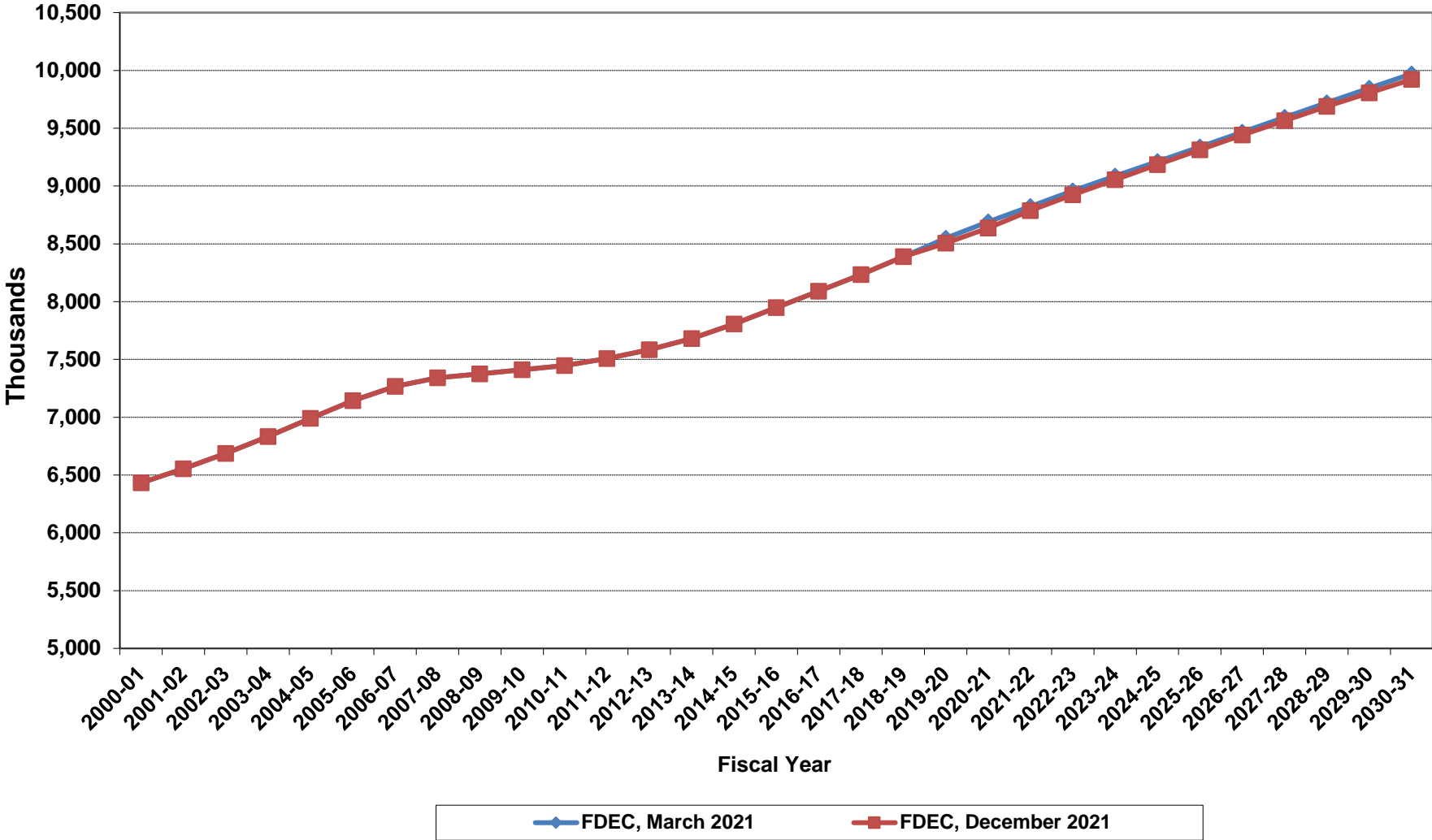
Growth In Florida Resident Population



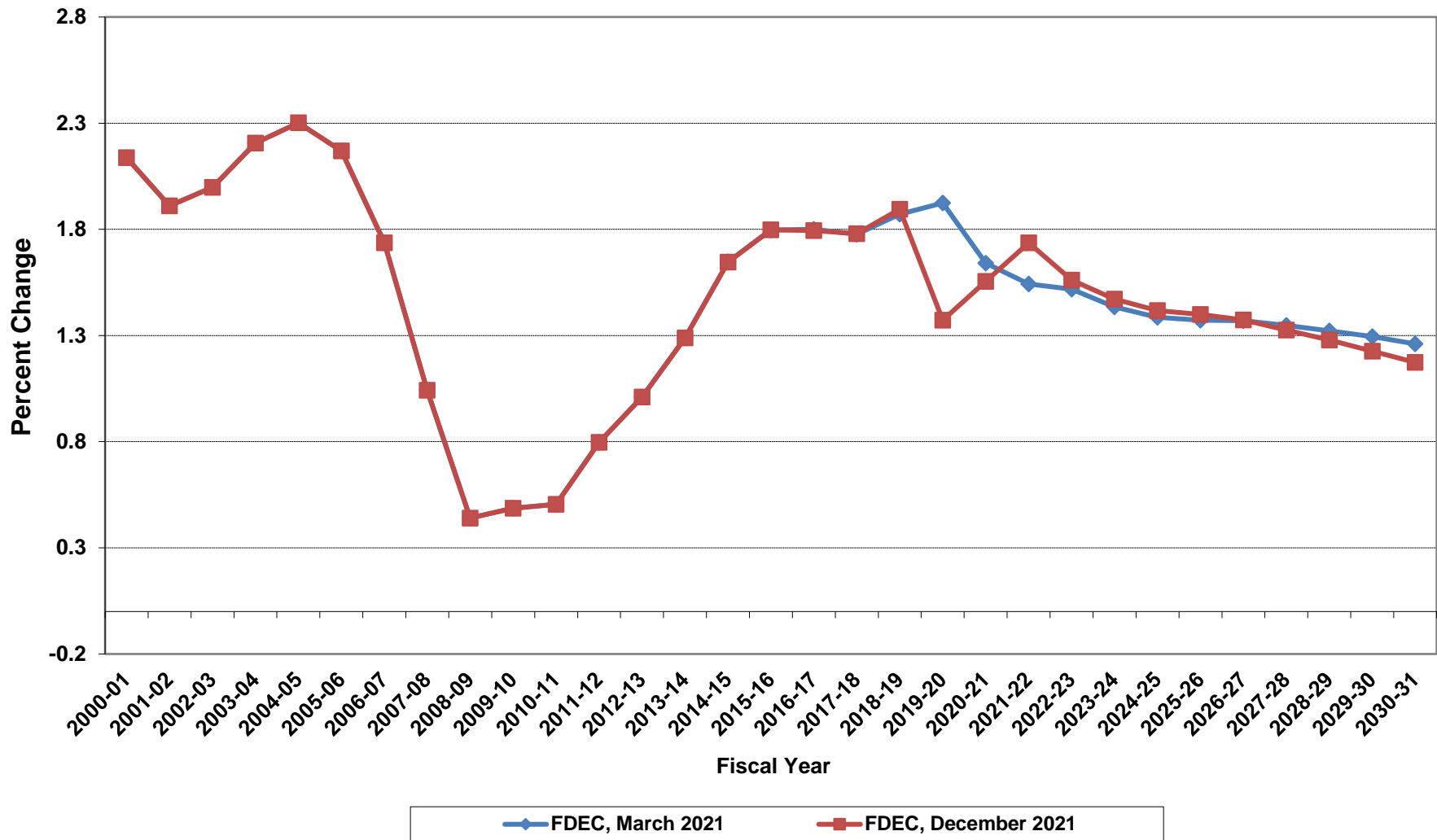
Net Change In Florida Resident Population



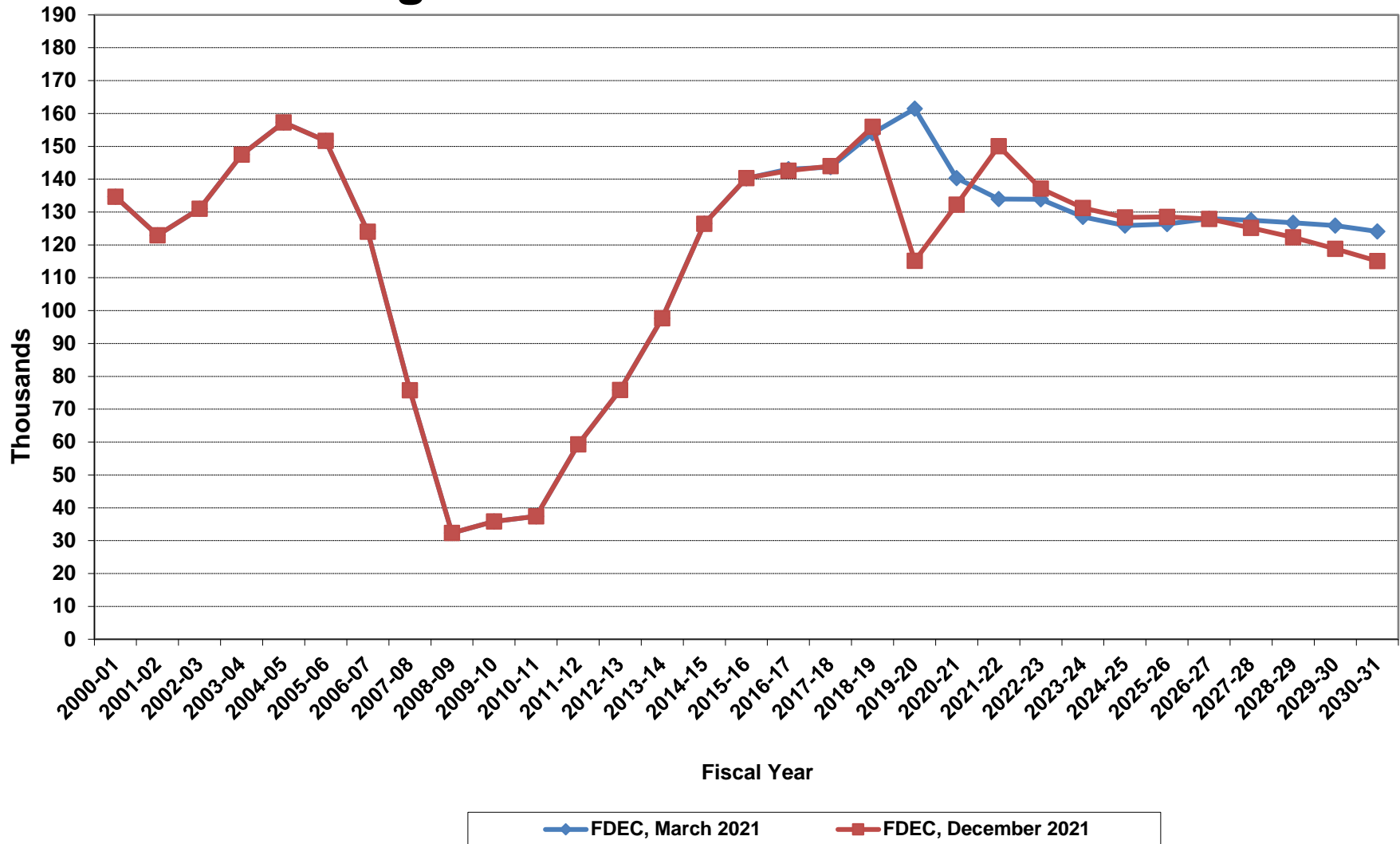
Florida Resident Households



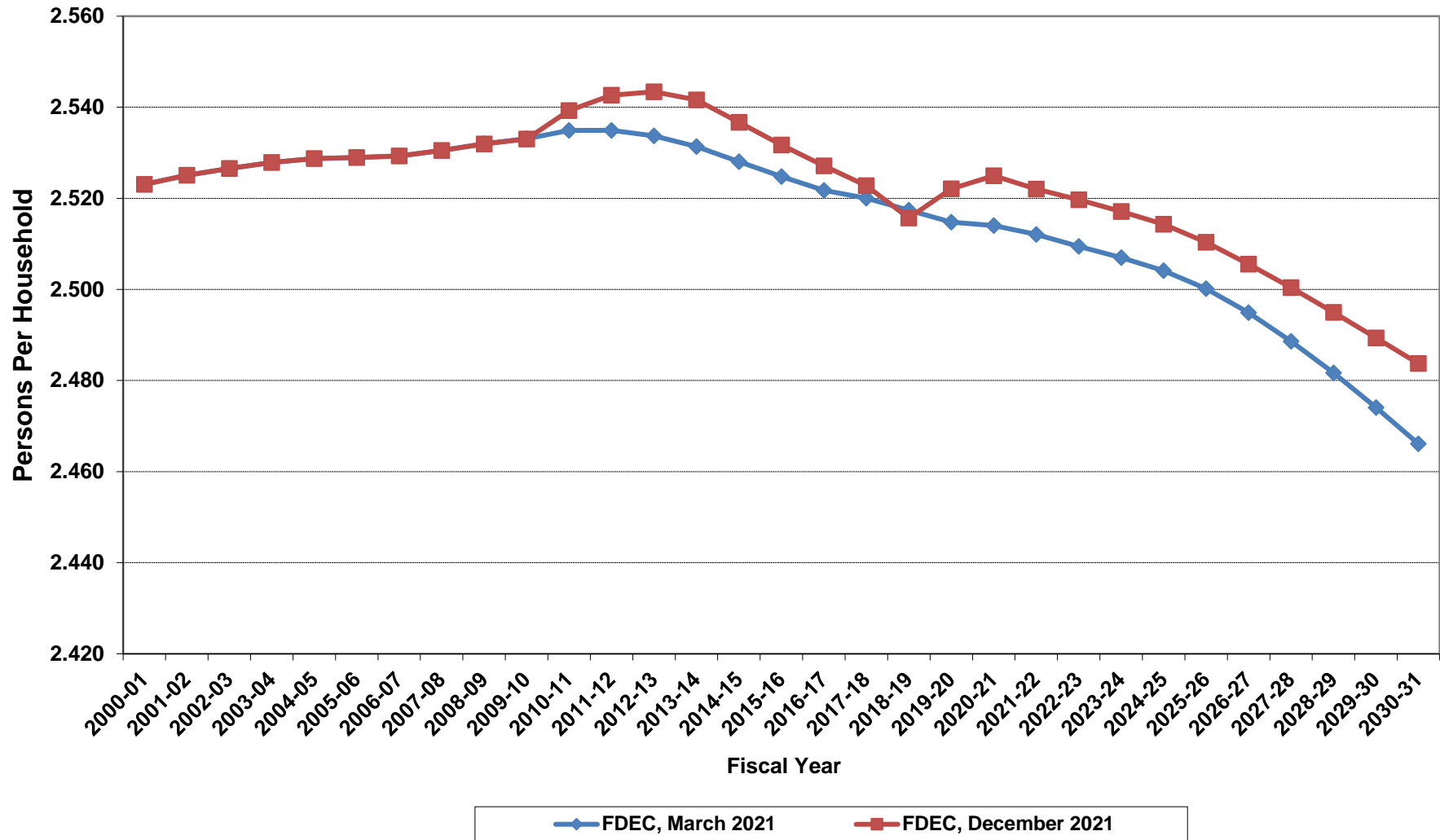
Growth In Florida Resident Households



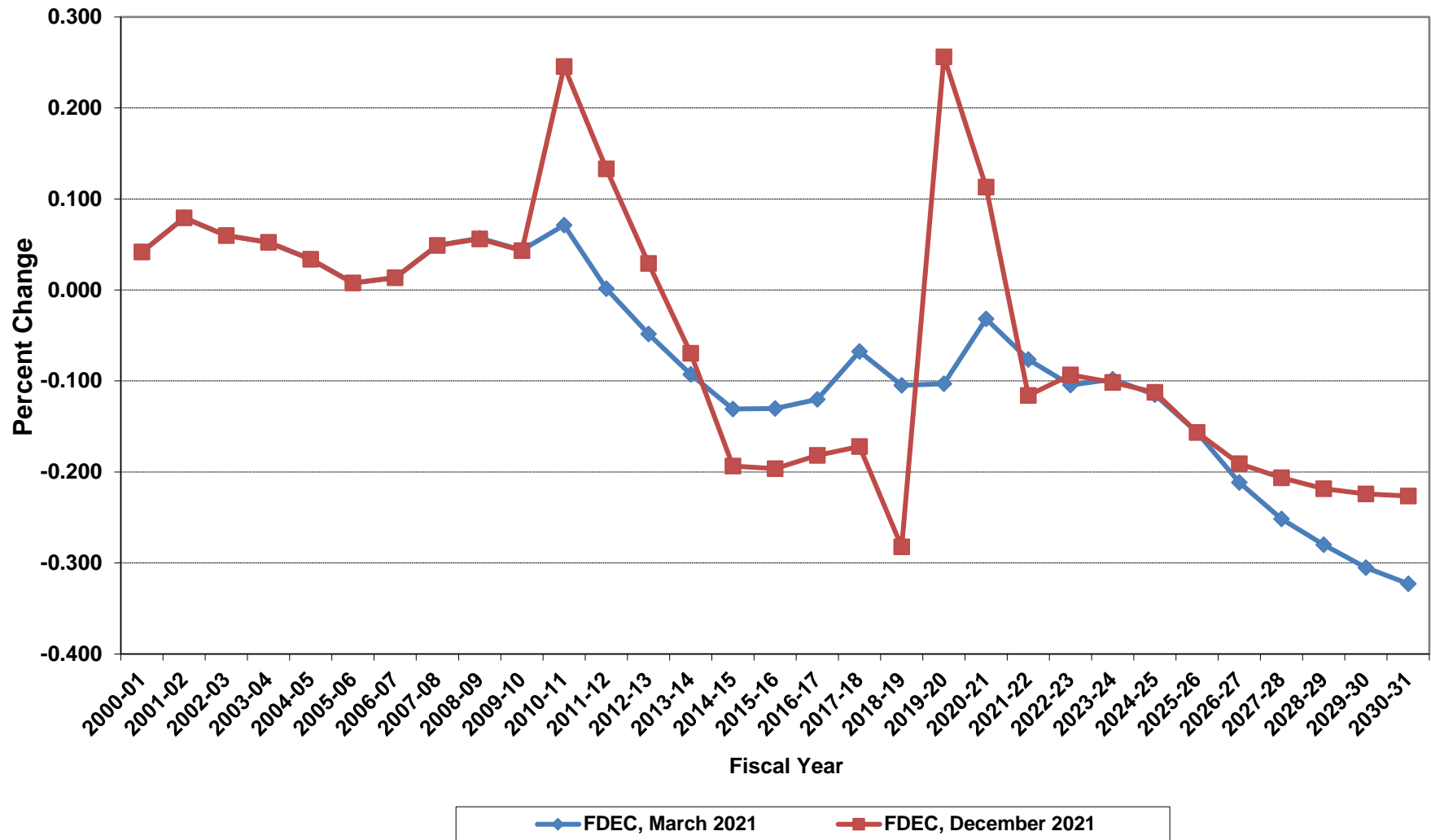
Net Change In Florida Resident Households



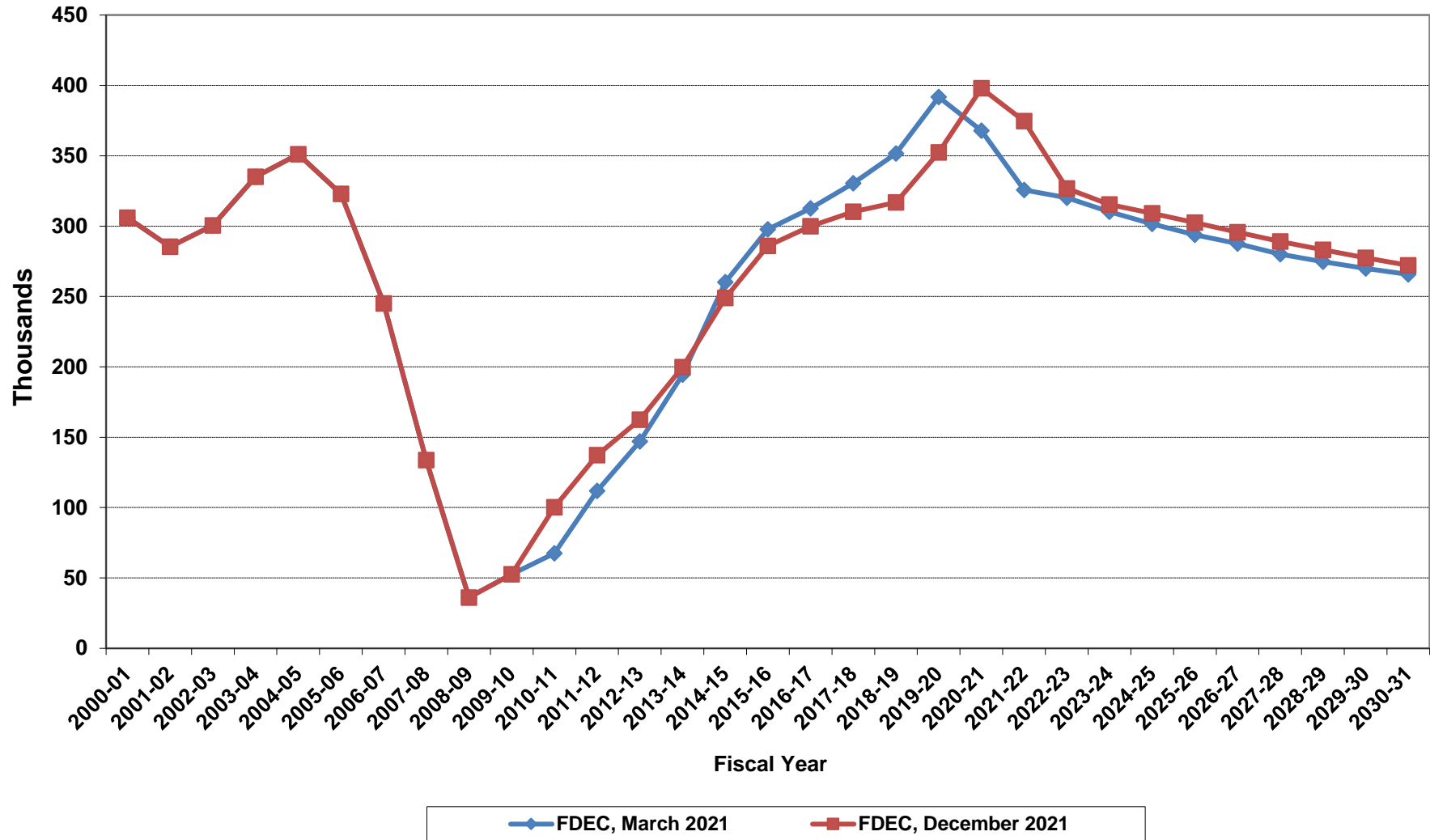
Average Florida Household Size



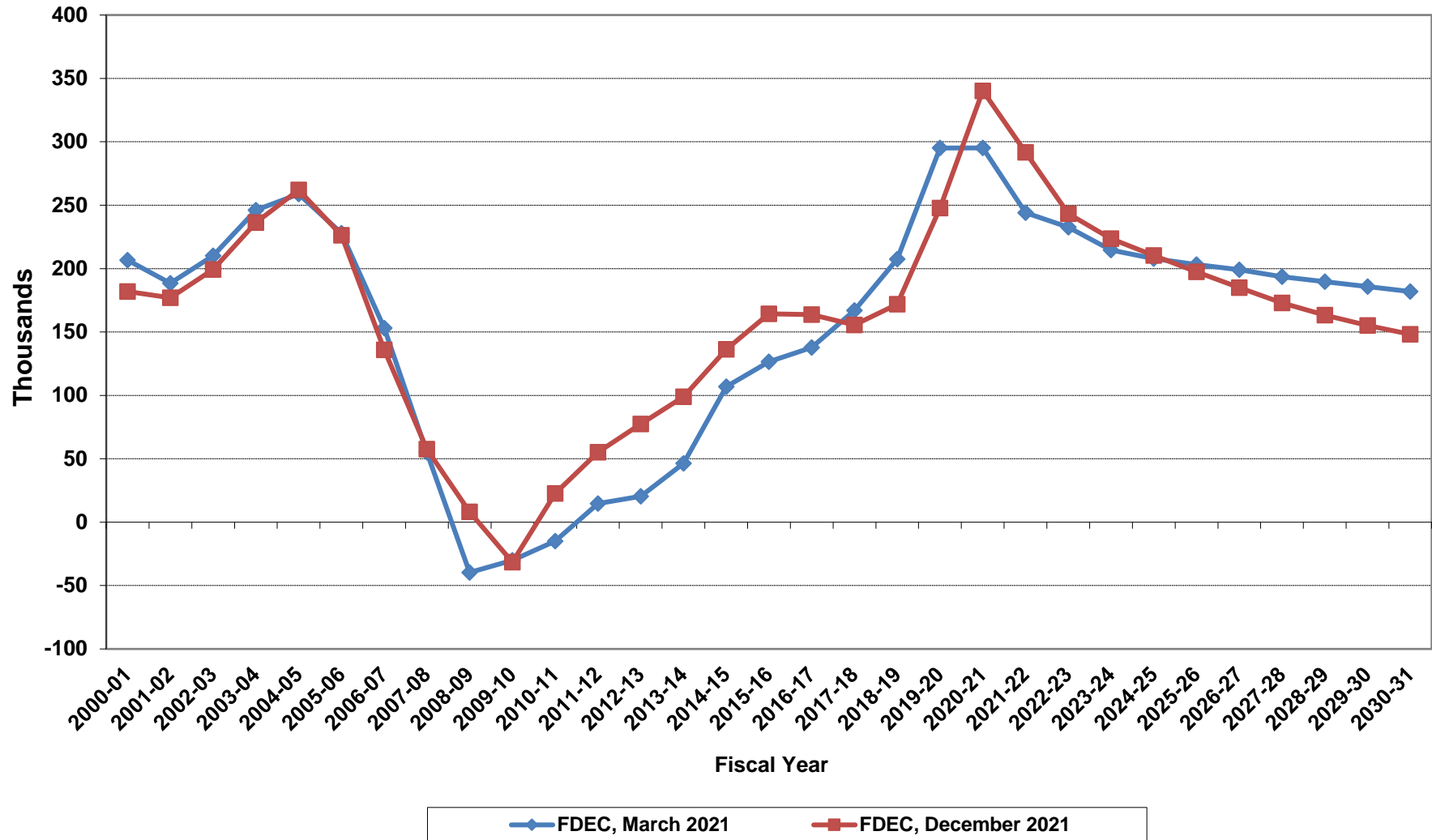
Growth In Average Florida Household Size



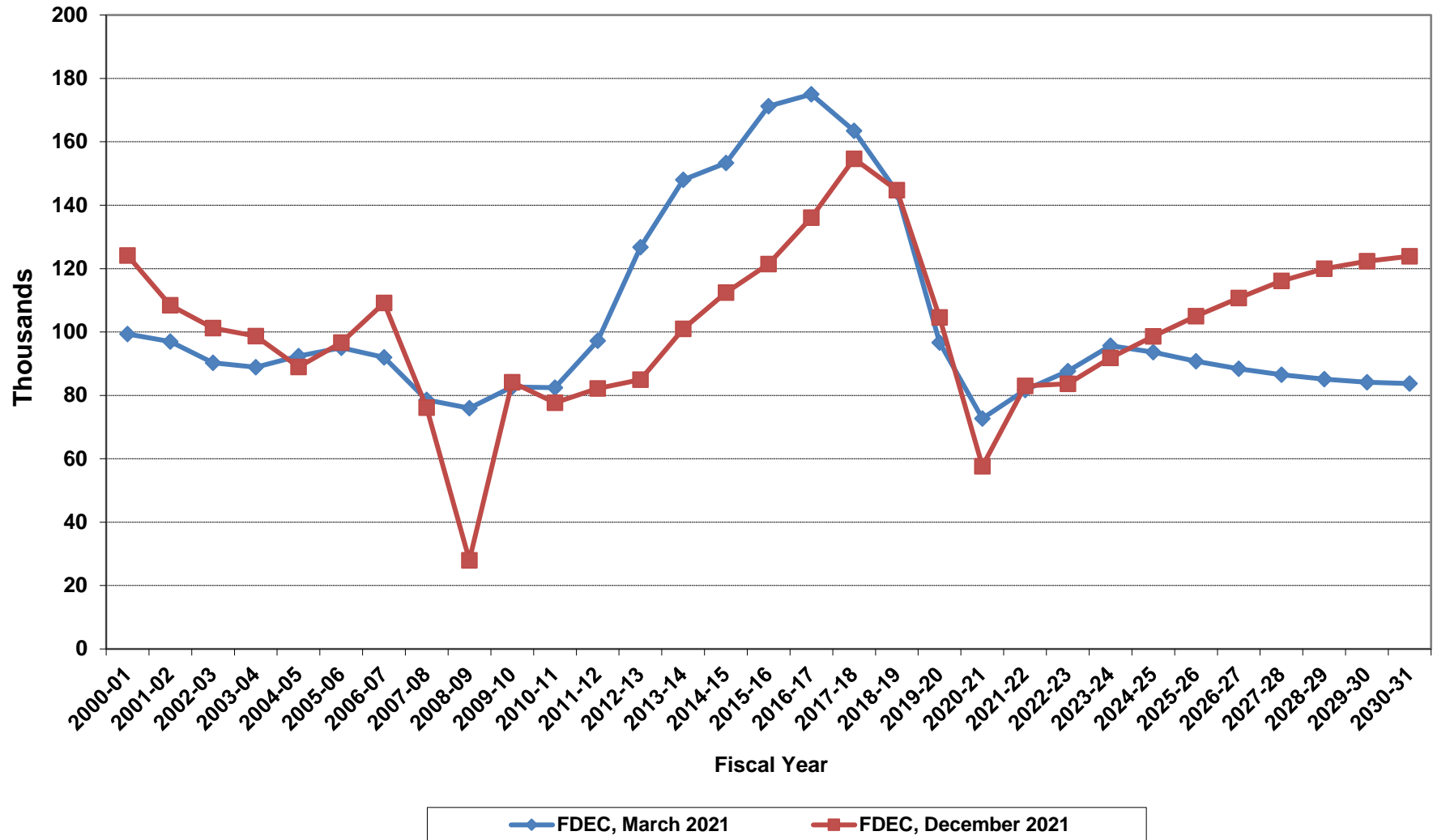
Florida Net Migration



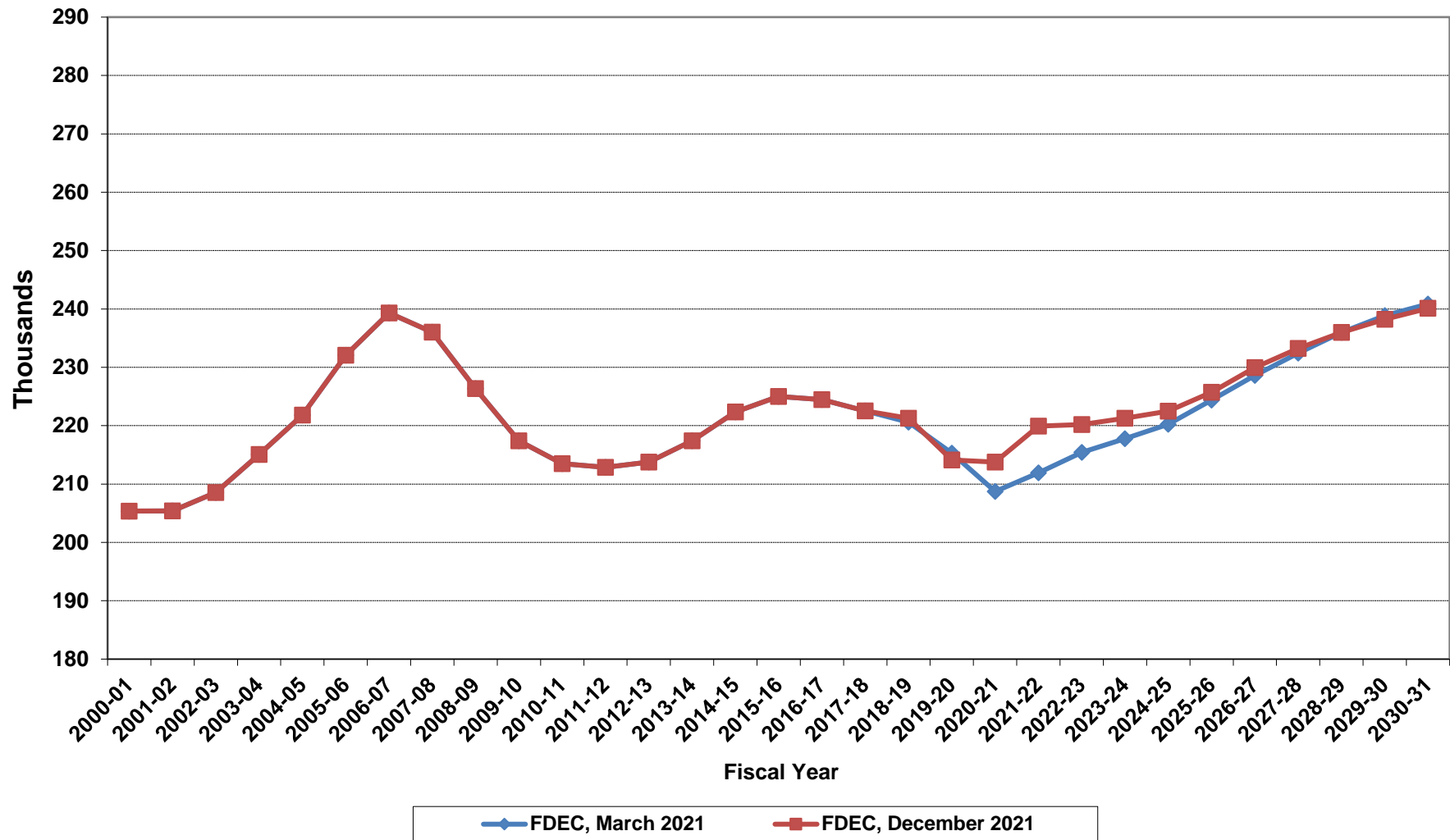
Florida Net Domestic Migration



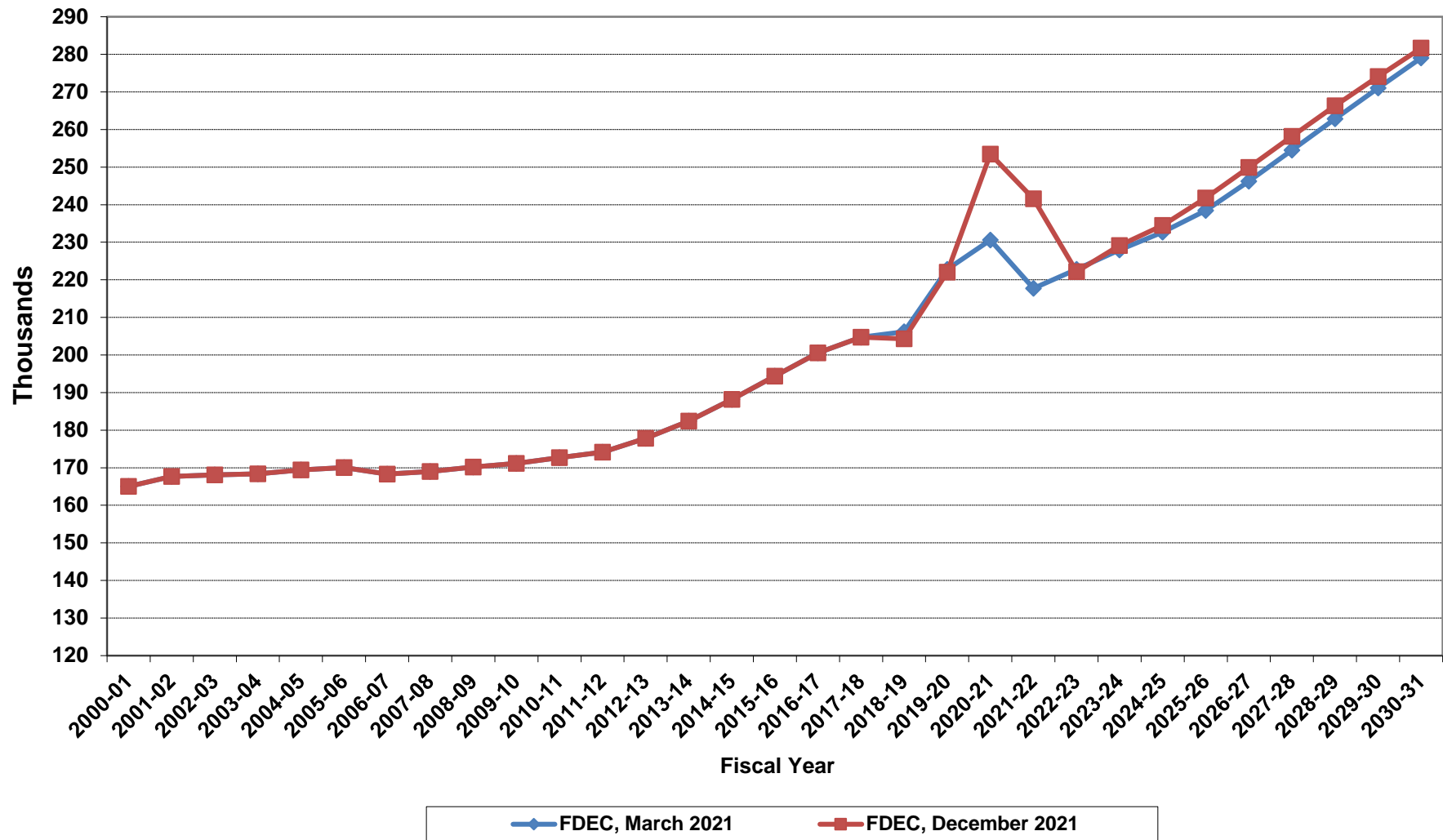
Florida Net International Migration



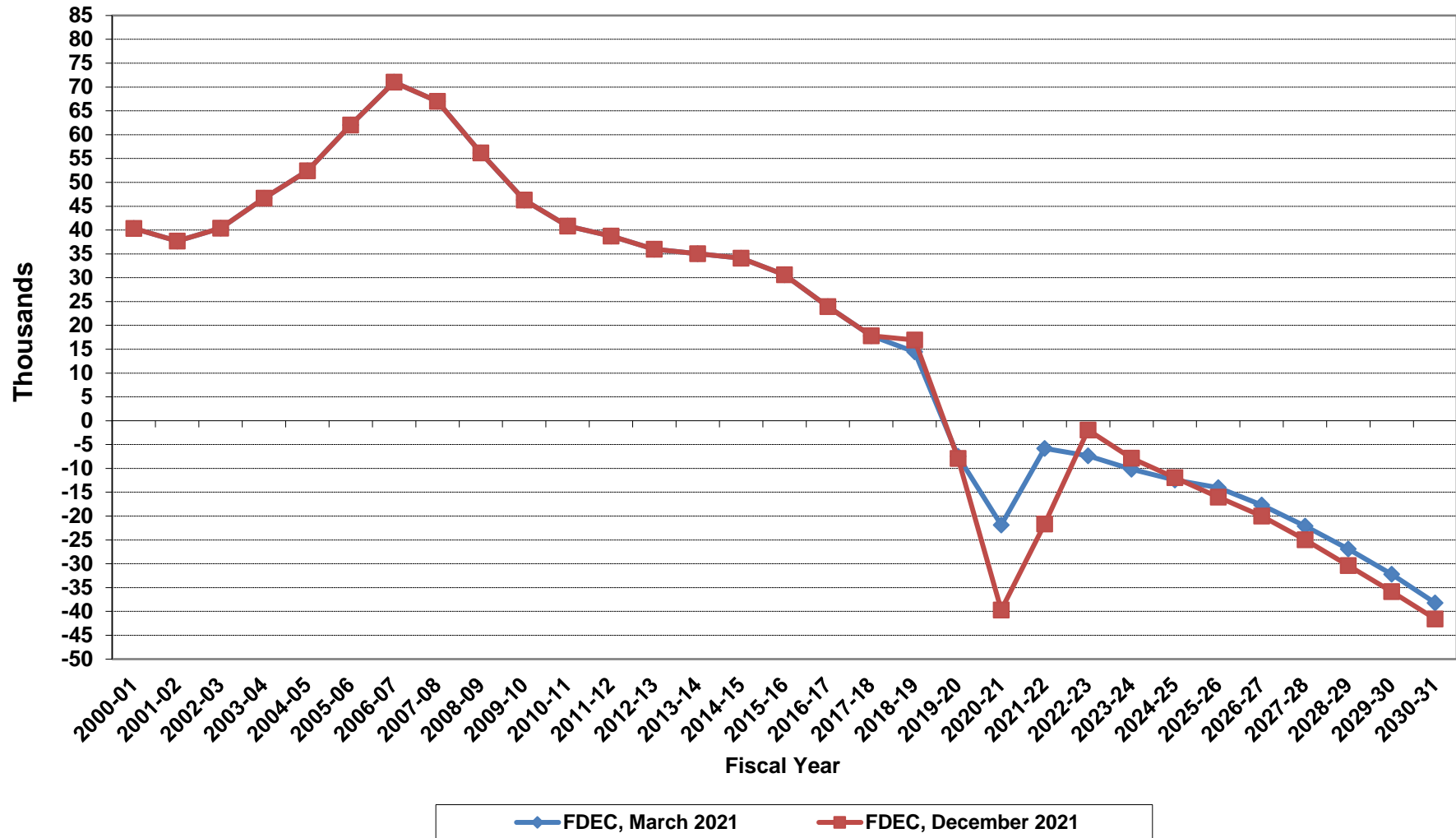
Florida Resident Live Births



Florida Resident Deaths



Florida Net Natural Increase



Florida Population and Components of Change

Fiscal Year	Population (End of Fiscal Year)	Growth Rate	Annual Change in Population	Births	Deaths	Net Natural Increase	Net Migration
1950 - 51	2,981,346	6.50%	181,931	67,486	27,670	39,816	142,115
1951 - 52	3,155,442	5.84%	174,096	72,383	28,942	43,441	130,655
1952 - 53	3,312,521	4.98%	157,079	76,954	29,761	47,193	109,886
1953 - 54	3,504,323	5.79%	191,802	82,725	31,055	51,670	140,132
1954 - 55	3,747,400	6.94%	243,077	86,643	32,176	54,467	188,610
1955 - 56	4,046,062	7.97%	298,662	92,941	34,932	58,009	240,653
1956 - 57	4,370,045	8.01%	323,983	100,990	38,269	62,721	261,262
1957 - 58	4,629,510	5.94%	259,465	105,972	41,911	64,061	195,404
1958 - 59	4,812,270	3.95%	182,760	110,409	43,674	66,735	116,025
1959 - 60	4,998,508	3.87%	186,238	114,428	46,057	68,371	117,867
1960 - 61	5,185,913	3.75%	187,405	116,449	48,388	68,061	119,344
1961 - 62	5,367,899	3.51%	181,986	116,120	50,346	65,774	116,212
1962 - 63	5,553,522	3.46%	185,623	114,709	54,453	60,256	125,367
1963 - 64	5,728,499	3.15%	174,977	115,002	56,229	58,773	116,204
1964 - 65	5,881,195	2.67%	152,696	110,515	57,734	52,781	99,915
1965 - 66	6,065,768	3.14%	184,573	104,367	61,217	43,150	141,423
1966 - 67	6,249,674	3.03%	183,906	101,209	62,577	38,632	145,274
1967 - 68	6,441,756	3.07%	192,082	100,320	66,134	34,186	157,896
1968 - 69	6,633,546	2.98%	191,790	104,286	71,285	33,001	158,789
1969 - 70	6,861,118	3.43%	227,572	111,511	73,831	37,680	189,892
1970 - 71	7,233,583	5.43%	372,465	117,012	75,354	41,658	330,807
1971 - 72	7,681,540	6.19%	447,957	113,568	79,717	33,851	414,106
1972 - 73	8,157,883	6.20%	476,343	107,804	86,232	21,572	454,771
1973 - 74	8,515,208	4.38%	357,325	109,366	88,459	20,907	336,418
1974 - 75	8,648,587	1.57%	133,379	108,686	87,224	21,462	111,917
1975 - 76	8,782,975	1.55%	134,388	104,022	88,129	15,893	118,495
1976 - 77	8,972,678	2.16%	189,703	107,623	90,443	17,180	172,523
1977 - 78	9,225,527	2.82%	252,849	112,268	93,383	18,885	233,964
1978 - 79	9,523,728	3.23%	298,201	116,393	96,801	19,592	278,609
1979 - 80	9,914,652	4.10%	390,924	126,673	101,048	25,625	365,299
1980 - 81	10,212,969	3.01%	298,317	135,560	107,562	27,998	270,319
1981 - 82	10,492,851	2.74%	279,882	141,593	108,644	32,949	246,933
1982 - 83	10,748,466	2.44%	255,615	146,853	110,497	36,356	219,259
1983 - 84	11,065,911	2.95%	317,445	151,748	113,939	37,809	279,636
1984 - 85	11,405,533	3.07%	339,622	159,819	117,539	42,280	297,342
1985 - 86	11,740,069	2.93%	334,536	165,857	122,453	43,404	291,132
1986 - 87	12,083,241	2.92%	343,172	170,819	124,946	45,873	297,299
1987 - 88	12,410,339	2.71%	327,098	179,541	129,413	50,128	276,970
1988 - 89	12,723,719	2.53%	313,380	188,390	131,992	56,398	256,982
1989 - 90	13,017,296	2.31%	293,577	197,181	132,503	64,678	228,899
1990 - 91	13,326,892	2.38%	309,596	197,180	134,093	63,087	246,509
1991 - 92	13,552,021	1.69%	225,129	191,810	136,280	55,530	169,599
1992 - 93	13,802,571	1.85%	250,550	192,051	142,087	49,964	200,586
1993 - 94	14,120,323	2.30%	317,752	191,840	146,101	45,739	272,013
1994 - 95	14,406,418	2.03%	286,095	189,292	149,161	40,131	245,964
1995 - 96	14,701,040	2.05%	294,622	188,584	152,570	36,014	258,608
1996 - 97	15,012,615	2.12%	311,575	190,587	153,067	37,520	274,055
1997 - 98	15,310,069	1.98%	297,454	194,242	155,080	39,162	258,292
1998 - 99	15,680,164	2.42%	370,095	195,897	159,988	35,909	334,186
1999 - 00	16,069,889	2.49%	389,725	200,302	162,489	37,813	351,912
2000 - 01	16,385,615	1.96%	315,726	205,798	164,919	40,879	274,847
2001 - 02	16,718,076	2.03%	332,461	205,164	167,812	37,352	295,109
2002 - 03	17,074,258	2.13%	356,182	208,403	168,079	40,324	315,858
2003 - 04	17,475,944	2.35%	401,686	215,298	168,302	46,996	354,690
2004 - 05	17,876,215	2.29%	400,271	221,533	169,302	52,231	348,040
2005 - 06	18,236,885	2.02%	360,670	232,019	170,303	61,716	298,954
2006 - 07	18,501,231	1.45%	264,346	239,635	168,117	71,518	192,828
2007 - 08	18,636,837	0.73%	135,606	236,065	168,966	67,099	68,507
2008 - 09	18,711,844	0.40%	75,007	226,337	170,615	55,722	19,285
2009 - 10	18,835,550	0.66%	123,706	217,408	171,121	46,287	77,419

Florida Population and Components of Change

Fiscal Year	Population (End of Fiscal Year)	Growth Rate	Annual Change in Population	Births	Deaths	Net Natural Increase	Net Migration
2010 - 11	18,993,373	0.84%	157,823	213,468	172,661	40,807	117,016
2011 - 12	19,183,462	1.00%	190,089	212,876	174,120	38,756	151,333
2012 - 13	19,394,565	1.10%	211,103	213,762	177,810	35,952	175,151
2013 - 14	19,654,737	1.34%	260,172	217,422	182,382	35,040	225,132
2014 - 15	19,958,376	1.54%	303,639	222,338	188,217	34,121	269,518
2015 - 16	20,282,338	1.62%	323,962	225,014	194,386	30,628	293,334
2016 - 17	20,606,703	1.60%	324,365	224,476	200,526	23,950	300,415
2017 - 18	20,938,045	1.61%	331,342	222,547	204,707	17,840	313,502
2018 - 19	21,275,386	1.61%	337,341	221,275	204,331	16,944	320,397
2019 - 20	21,627,873	1.66%	352,487	214,133	222,045	-7,912	360,399
2020 - 21	21,988,429	1.67%	360,556	213,758	253,476	-39,718	400,274
2021 - 22	22,329,178	1.55%	340,749	219,936	241,589	-21,653	362,402
2022 - 23	22,641,533	1.40%	312,355	220,178	222,146	-1,968	314,323
2023 - 24	22,944,676	1.34%	303,143	221,266	229,119	-7,853	310,996
2024 - 25	23,235,911	1.27%	291,235	222,505	234,455	-11,950	303,185
2025 - 26	23,517,581	1.21%	281,670	225,727	241,744	-16,017	297,687
2026 - 27	23,787,367	1.15%	269,786	229,965	249,936	-19,971	289,757
2027 - 28	24,045,915	1.09%	258,548	233,227	258,212	-24,985	283,533
2028 - 29	24,293,111	1.03%	247,196	235,966	266,312	-30,346	277,542
2029 - 30	24,529,087	0.97%	235,976	238,248	274,078	-35,830	271,806
2030 - 31	24,754,395	0.92%	225,308	240,095	281,651	-41,556	266,864
2031 - 32	24,969,689	0.87%	215,294	241,537	288,895	-47,358	262,652
2032 - 33	25,175,872	0.83%	206,183	242,431	295,804	-53,373	259,556
2033 - 34	25,375,189	0.79%	199,317	242,810	302,326	-59,516	258,833
2034 - 35	25,568,725	0.76%	193,536	243,142	307,709	-64,567	258,103
2035 - 36	25,756,184	0.73%	187,459	243,544	313,803	-70,259	257,718
2036 - 37	25,936,534	0.70%	180,350	244,019	320,594	-76,575	256,925
2037 - 38	26,111,289	0.67%	174,755	244,540	326,138	-81,598	256,353
2038 - 39	26,281,144	0.65%	169,855	245,126	331,551	-86,425	256,280